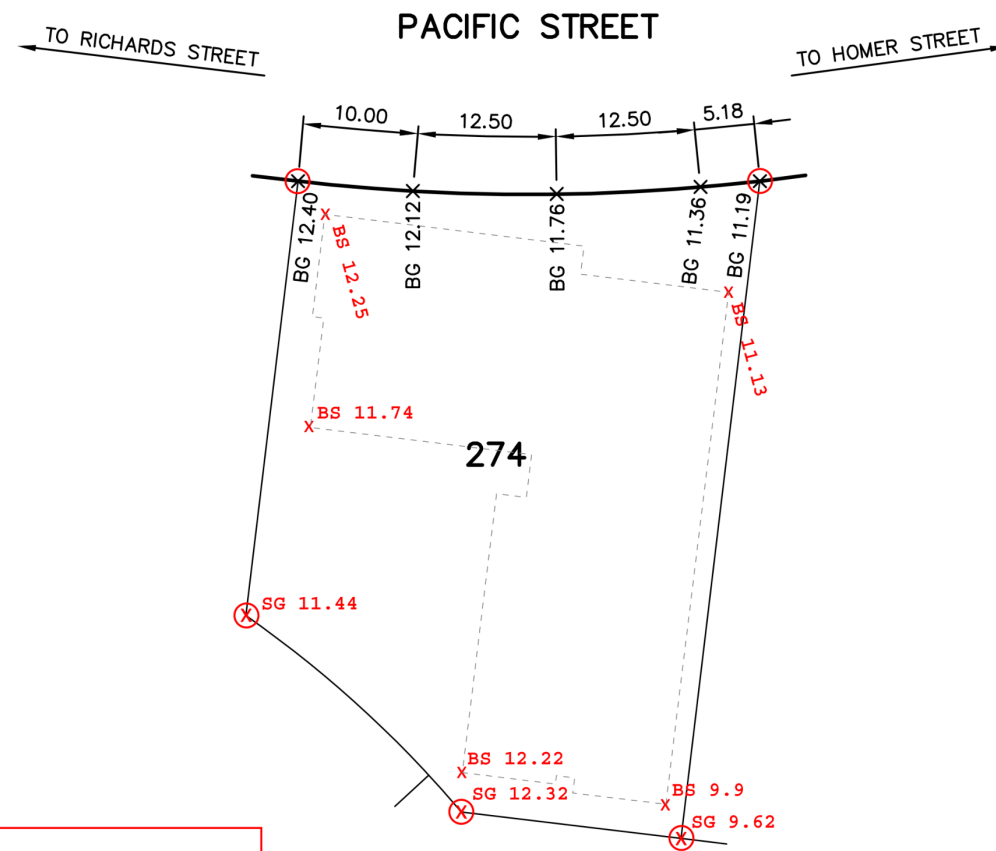


SITE CONTEXT & ANALYSIS / CONT'D

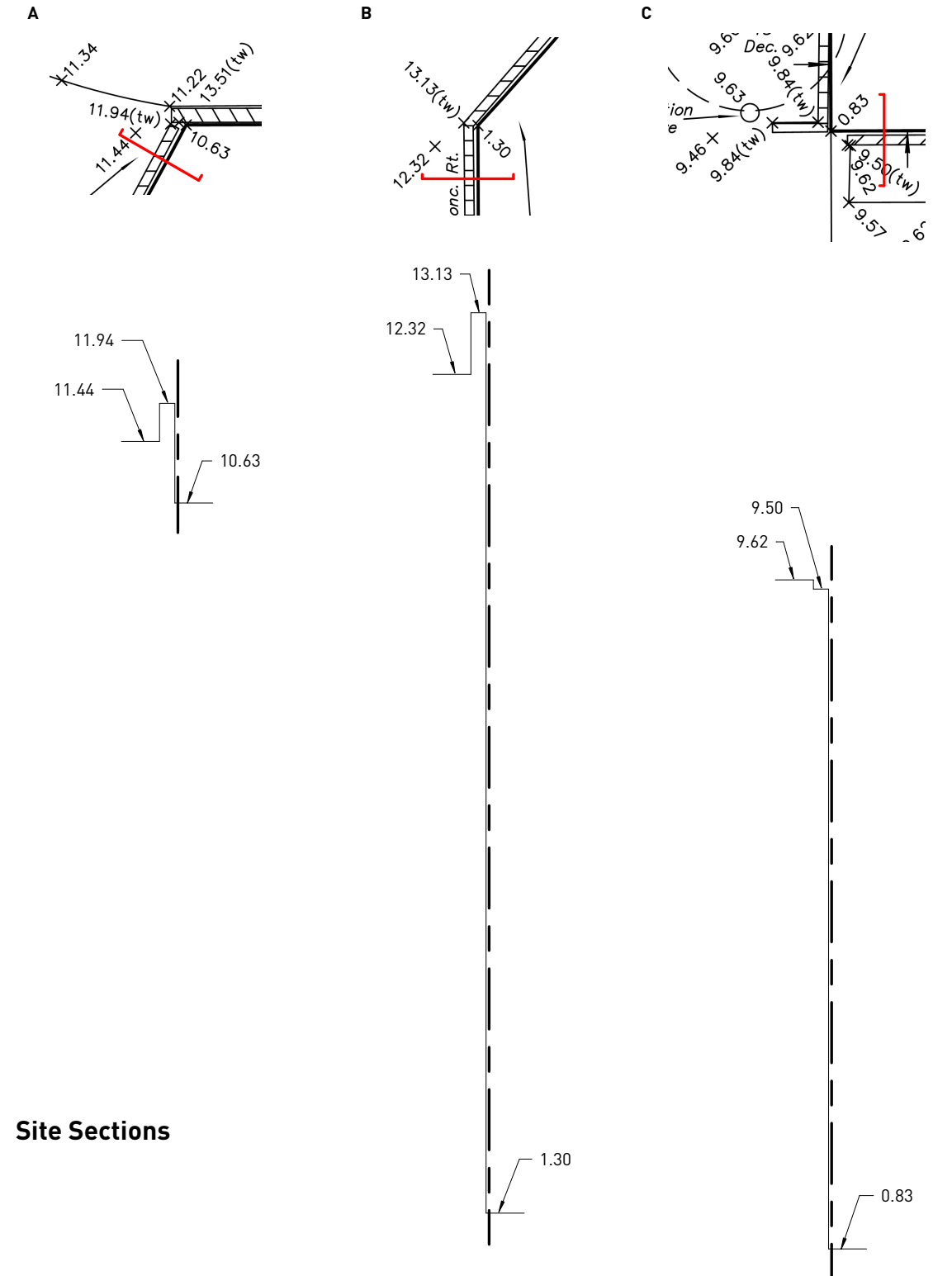


--- Outline of proposed building
 ○ Corners used to create Base Surface
 BS = Base Surface at corners of proposed building
 SG = Survey Grades (added to complete missing Building Grade points)

Building grades

The existing property has a deep existing excavation on its south end remaining from the 1986 Expo. As a result, it is not practical to calculate the base surface from the on site

corner grades. The base surface has been calculated by using nearest surface grade on the adjacent properties as diagrammed above.



Site Sections

SITE CONTEXT & ANALYSIS / CONT'D



VIEW LOOKING AT THE SITE FROM PACIFIC STREET



VIEW LOOKING SOUTHEAST ON PACIFIC STREET



VIEW LOOKING NORTHEAST ON STRATHMORE MEWS

Site photos

Pacific Street is characterized by a double row of street trees, a parking layby and a centre medium. The City plans to expand the cyclist network on Pacific.

SITE CONTEXT & ANALYSIS / CONT'D



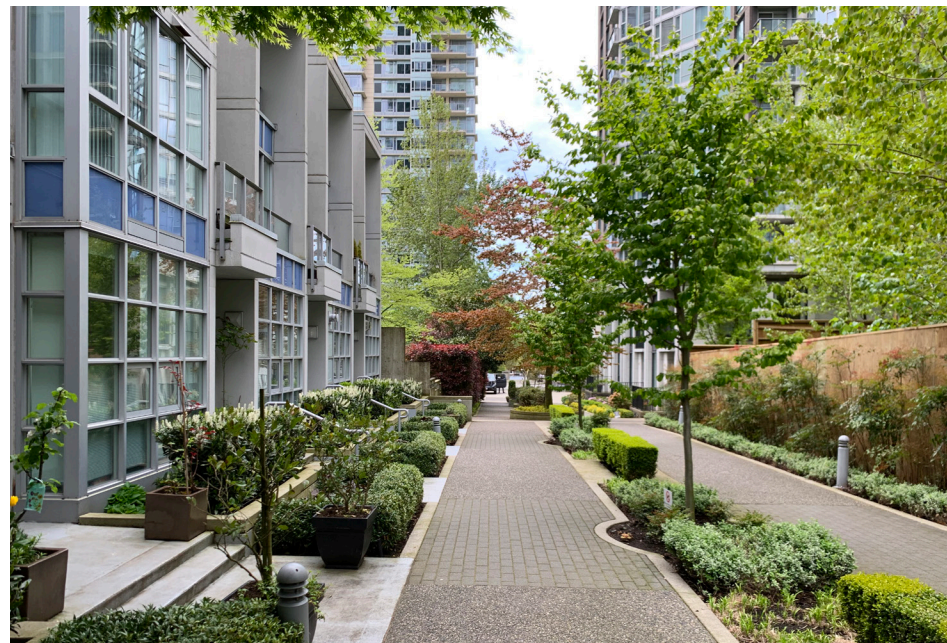
VIEW OF THE SOUTH CORNER OF THE SITE



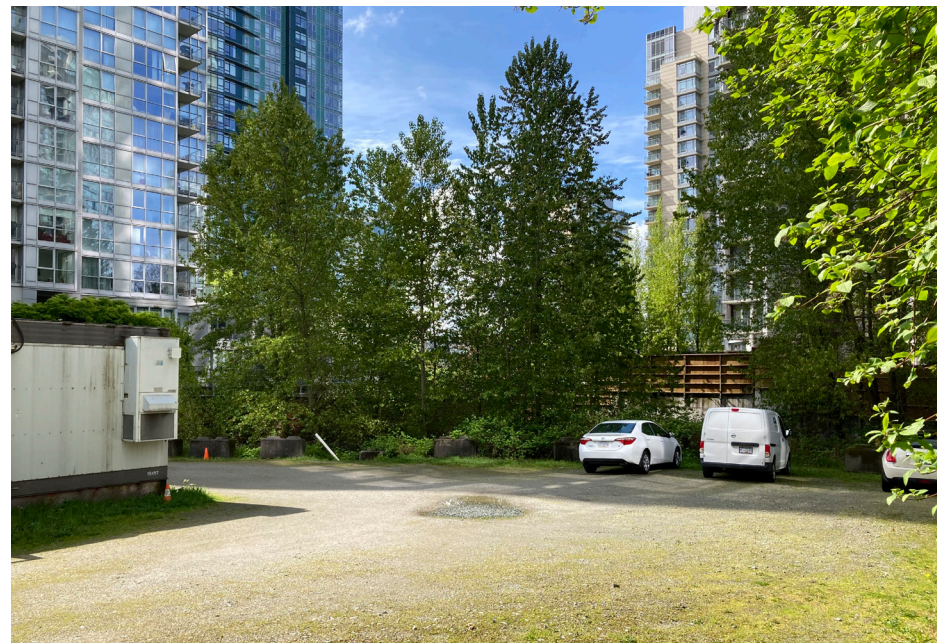
VIEW LOOKING NORTHWEST ON PACIFIC STREET



VIEW OF THE SOUTHWEST CORNER OF THE SITE



LOOKING SOUTHWEST ON STRATHMORE MEWS TOWARDS THE WATER



LOOKING SOUTH FROM NORTH CORNER OF THE SITE



VIEW OF THE SITE FROM PACIFIC STREET

Site photos