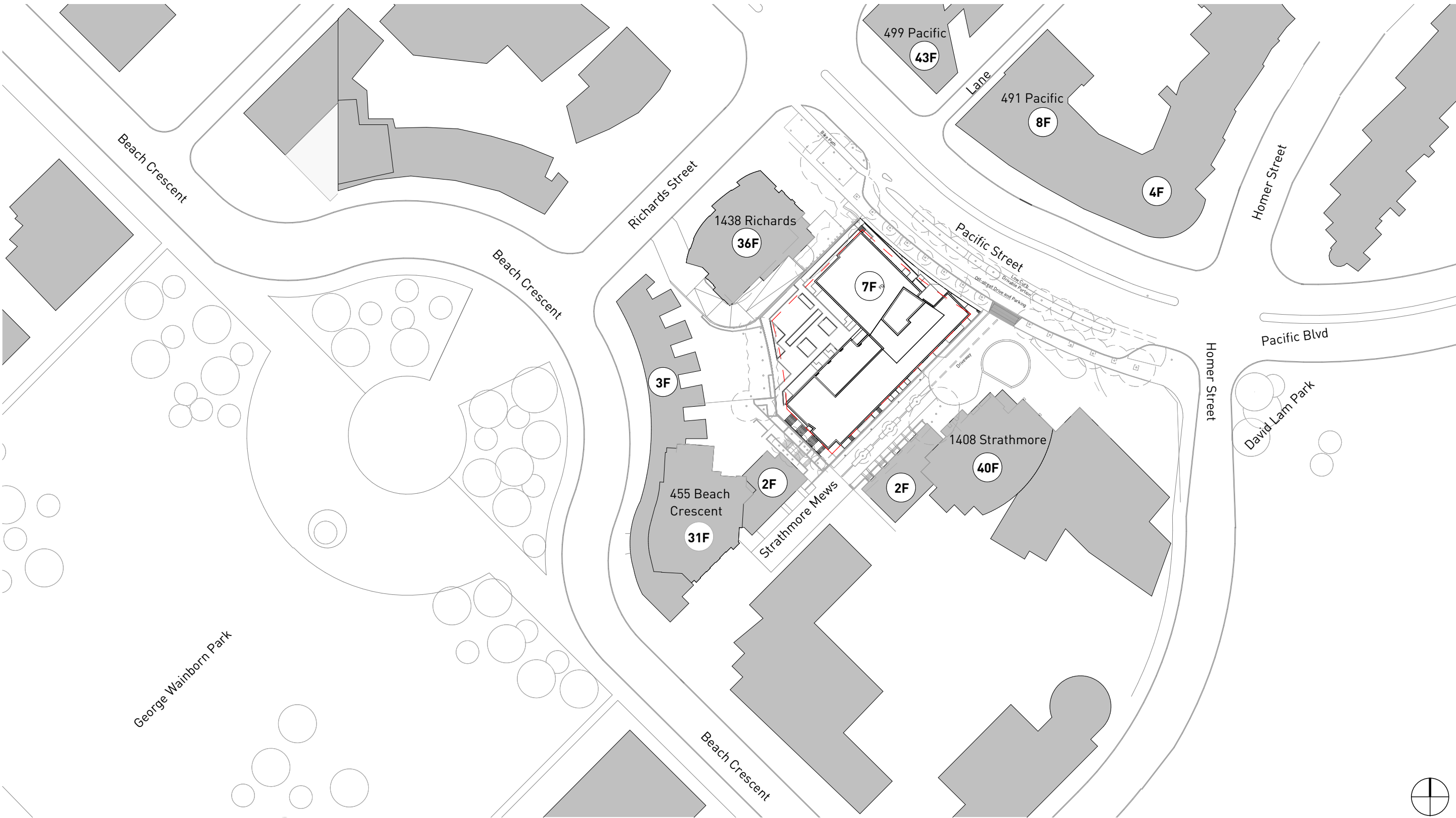


SITE CONTEXT & ANALYSIS / CONT'D

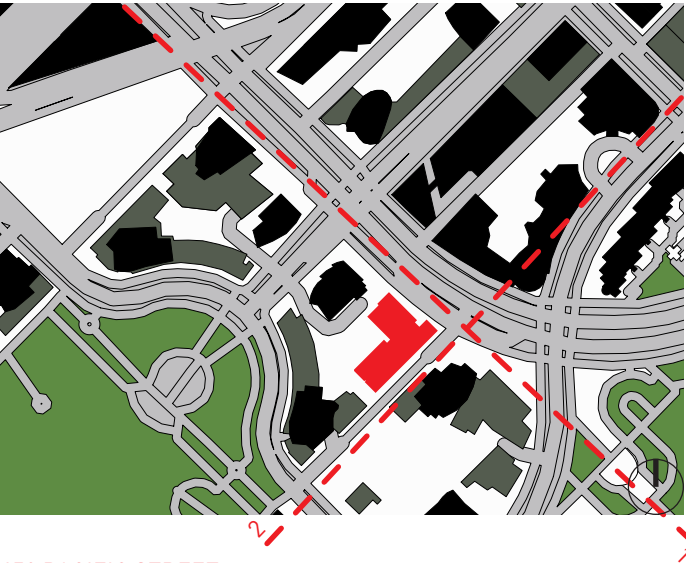


Context plan

SITE CONTEXT & ANALYSIS / CONT'D

Streetscape elevations

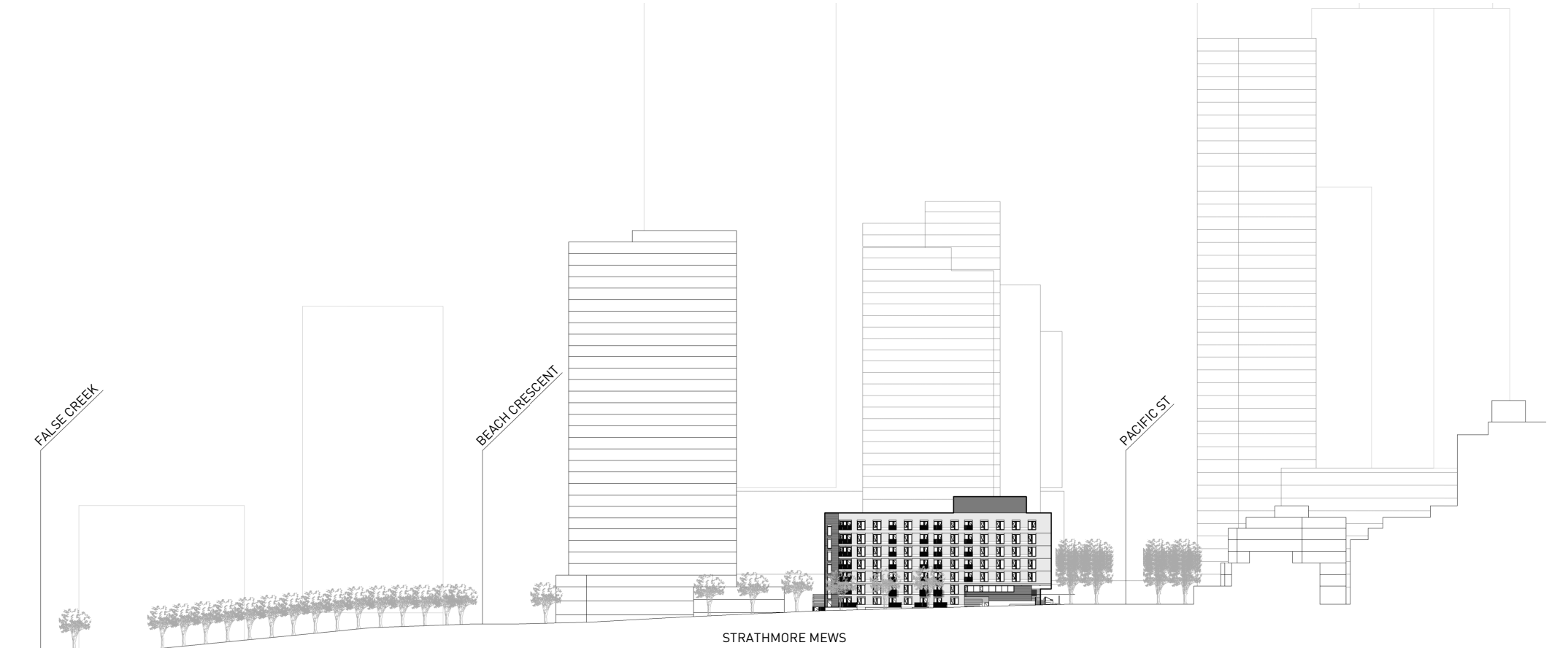
The 450 Pacific Street site is one of the last sites to be developed in the Beach Neighbourhood. The site is bordered by the 40 storey residential tower at 1408 Strathmore Mews to the southeast, 30 storey residential tower at 455 Beach Crescent to the southwest and the 32 storey residential tower at 1438 Richard Street to the northwest.



450 PACIFIC STREET



STREETSCAPE 1: PACIFIC STREET



STREETSCAPE 2: STRATHMORE MEWS