

NOTES

The following notes shall apply to all drawings and associated documents.

Copyright of this drawing and design is reserved by the Designer. The drawing and all associated documents are an instrument of service to the Designer. The drawing and the information contained therein may not be reproduced in whole or in part without prior written permission of the Designer.

These Contract Documents are the property of the Landscape Architect. The Landscape Architect bears no responsibility for the interpretation of these documents by the Contractor. Upon written application the Landscape Architect will provide engineering certification or supplementary information regarding the intent of the Contract Documents. The Landscape Architect will review Shop Drawings submitted by the Contractor for design conformance only.

Drawings are not to be scaled for construction. Contractor to verify all existing conditions and dimensions required to perform the work and report any discrepancies with the Contract Documents to the Landscape Architect before commencing work.

Positions of exposed or finished mechanical or electrical devices, fittings, and fixtures are indicated on Landscape Architectural drawings. The locations shown on the Landscape Architectural drawings govern over the Mechanical and Electrical drawings. Those items not clearly located will be located as directed by the Landscape Architect.

These drawings are not to be used for construction unless noted below as "Issued for Construction".

All work to be carried out in conformance with the Code and Bylaws of the authorities having jurisdiction.

The Designer of these plans and specifications gives no warranty or representation to any party about the constructability of the represented by them. All contractors or subcontractors must satisfy themselves when bidding and at all times that they can properly construct the work represented by these plans.

NOT FOR CONSTRUCTION

LEGEND

PROPOSED DECIDUOUS CANOPY TREE

PROPOSED SHRUB & PERENNIAL PLANTING

UNIT PAVING

FFE 13.00 FINISHED FLOOR LEVEL

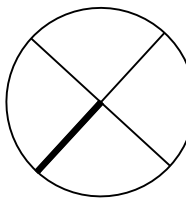
PROPERTY LINE

L1 - LANDSCAPE LIGHTS

L4 - BENCH/ STEP LIGHTS

ISSUE

10	
9	
8	
7	
6	
5	2022-06-03 RE-ISSUED FOR DP APPLICATION
4	2021-05-19 ISSUED FOR DP APPLICATION
3	2021-01-19 ISSUED FOR REVIEW & COORDINATION
2	2020-11-30 ISSUED FOR DP PRE-REVIEW (DIGITAL)
1	2018-05-12 ISSUED FOR REDLINING



Janet Rosenberg & Studio

Landscape Architecture and Urban Design
414-464-6666 P: 416-593-3748 www.jrlandscape.ca
140 Hurontario Avenue, Toronto Ontario M5C 2S3 Canada

PINNACLE

601 BEACH CRESCENT

VANDOUVER

LANDSCAPE LAYOUT PLAN
LEVEL 3

SCALE: 1:100
DRAWN: MC
CHECKED: GHVJ
PROJECT NUMBER: 17-042
DRAWING DATE: 2020-11-10

LT103



NOTES

The following notes shall apply to all drawings and associated documents.

Copyright of this drawing and design is reserved by the Designer. The drawing and all associated documents are an instrument of service by the Designer. The drawing and the information contained therein may not be reproduced in whole or in part without prior written permission of the Designer.

These Contract Documents are the property of the Landscape Architect. The Landscape Architect bears no responsibility for the interpretation of these documents by the Contractor. Upon written application, the Landscape Architect will provide written clarification or supplementary information regarding the intent of the Contract Documents. The Landscape Architect will review Shop Drawings submitted by the Contractor for design conformance only.

Drawings are not to be scaled for construction. Contractor to verify all existing conditions and dimensions required to perform the work and report any discrepancies with the Contract Documents to the Landscape Architect before commencing work.

Positions of exposed or finished mechanical or electrical devices, fittings, and fixtures are indicated on Landscape Architectural drawings. The locations shown on the Landscape Architectural drawings given over the Mechanical and Electrical drawings. Those items not clearly located will be located as directed by the Landscape Architect.

These drawings are not to be used for construction unless noted below as "Issued for Construction".

All work to be carried out in conformance with the Code and Bylaws of the authorities having jurisdiction.

The Designer of these plans and specifications gives no warranty or representation to any party about the constructability of the representation by them. All contractors or subcontractors must satisfy themselves when bidding and at all times that they can properly construct the work represented by these plans.

NOT FOR CONSTRUCTION

LEGEND

- PROPOSED DECIDUOUS CANOPY TREE
- PROPOSED SHRUB & PERENNIAL PLANTING
- UNIT PAVING
- PERMEABLE SURFACING
- PROPERTY LINE
- L1 - LANDSCAPE LIGHTS
- L2 - BOLLARD LIGHTS
- L4 - BENCH/ STEP LIGHTS

ISSUE

10	
9	
8	
7	
6	2022-06-03 RE-ISSUED FOR DP APPLICATION
5	2022-04-02 ISSUED FOR DP PRE-REVIEW (DIGITAL)
4	2021-05-19 ISSUED FOR DP APPLICATION
3	2021-01-19 ISSUED FOR REVIEW & COORDINATION
2	2020-11-30 ISSUED FOR DP PRE-REVIEW (DIGITAL)
1	2018-05-12 ISSUED FOR REDLINING



Janet Rosenberg & Studio
Landscape Architecture and Urban Design
4 416 593 6555 F 416 593 3748 www.jrlandscapes.com
145 Hurontario Avenue, Toronto Ontario M5C 2S5 Canada

PINNACLE

601 BEACH CRESCENT

VANCOUVER

LANDSCAPE LAYOUT PLAN
LEVEL 8

SCALE: 1/75
DRAWN: JRS
CHECKED: GHVBJ
PROJECT NUMBER: 17-042
DRAWING DATE: 2020-11-10

LT108

NOTES

The following notes shall apply to all drawings and associated documents.

Copyright of this drawing and design is reserved by the Designer. The drawing and all associated documents are an instrument of service to the Designer. The drawing and the information contained therein may not be reproduced in whole or in part without prior written permission of the designer.

These Contract Documents are the property of the Landscape Architect. The Landscape Architect bears no responsibility for the interpretation of these documents by the Contractor. Upon written application the Landscape Architect will provide engineering consultation or supplementary information regarding the intent of the Contract Documents. The Landscape Architect will review Shop Drawings submitted by the Contractor for design conformance only.

Drawings are not to be scaled for construction. Contractor to verify all existing conditions and dimensions required to perform the work and report any discrepancies with the Contract Documents to the Landscape Architect before commencing work.

Positions of exposed or finished mechanical or electrical devices, fittings, and fixtures are indicated on Landscape Architectural drawings. The locations shown on the Landscape Architectural drawings govern over the Mechanical and Electrical drawings. Those items not clearly located will be located as directed by the Landscape Architect.

These drawings are not to be used for construction unless noted below as "Issued for Construction".

All work to be carried out in conformance with the Code and Bylaws of the authorities having jurisdiction.

The Designer of these plans and specifications gives no warranty or representation to any party about the constructability of the represented by them. All contractors or subcontractors must satisfy themselves when bidding and at all times that they can properly construct the work represented by these plans.

PLANTING NOTES:

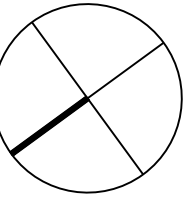
Pre-vegetated green roof mat system planted with drought - tolerant species.

NOT FOR CONSTRUCTION

LEGEND

ISSUE

10	
9	
8	
7	
6	
5	
4	
3	2022-06-03 RE-ISSUED FOR DP APPLICATION
2	2021-02-19 ISSUED FOR DP APPLICATION
1	2021-01-18 ISSUED FOR REVIEW AND COORDINATION



Janet
Rosenberg
& Studio

Landscape Architecture and Urban Design
414-610-6665 P: 416-593-3738 www.jrstudios.ca
145 Norwood Avenue, Toronto Ontario, M6C 2S5 Canada

PINNACLE

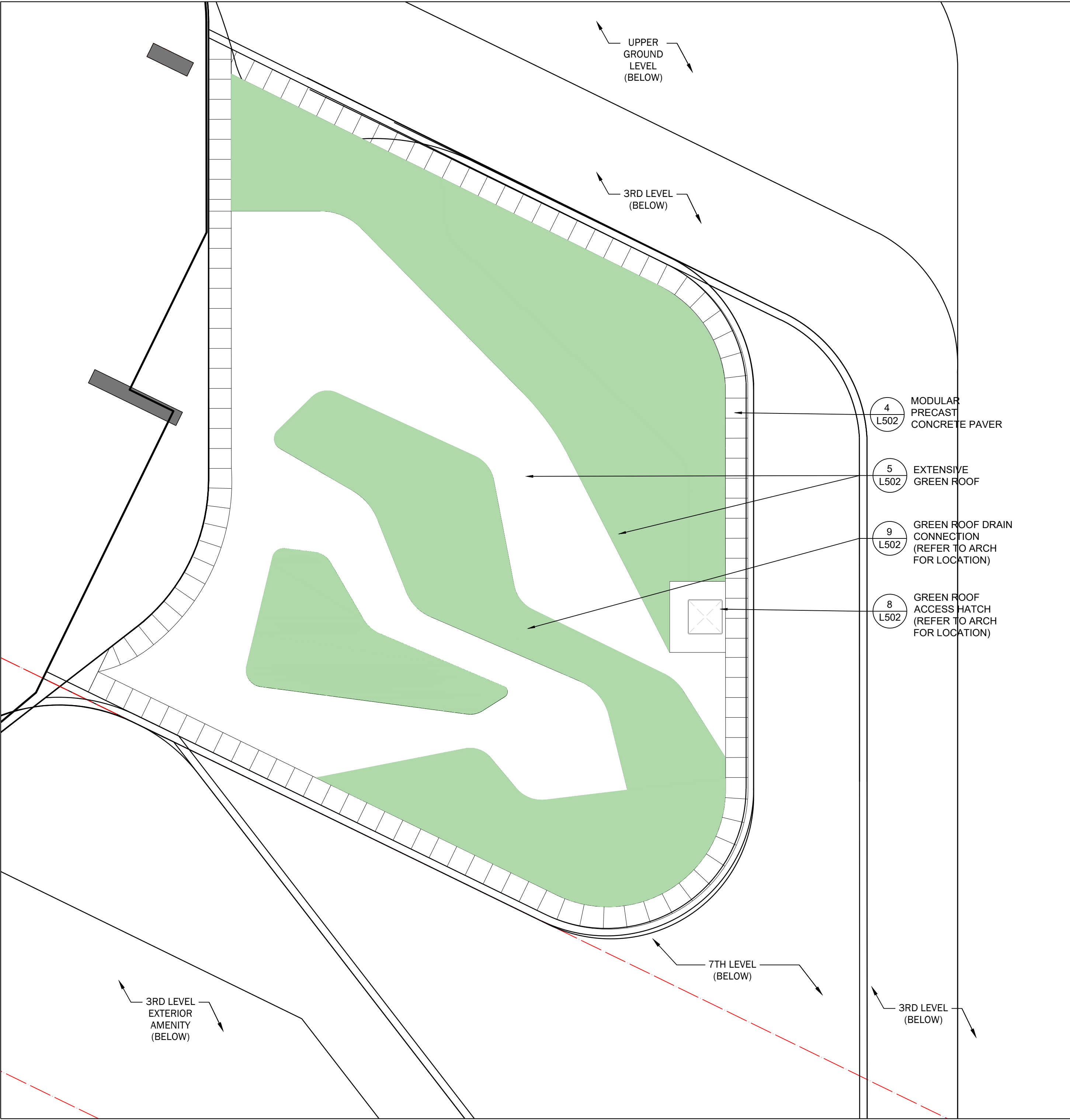
601 BEACH CRESCENT

VANCOUVER

LEVEL 9
EXTENSIVE GREEN ROOF LAYOUT

SCALE: 1/75
DRAWN: JRS
CHECKED: GHVBJ
PROJECT NUMBER: 17-042
DRAWING DATE: 2020-11-30

L109



NOTES

The following notes shall apply to all drawings and associated documents.

Copyright of this drawing and design is reserved by the Designer. The drawing and all associated documents are an instrument of service by the Designer. The drawing and the information contained therein may not be reproduced in whole or in part without prior written permission of the Designer.

These Contract Documents are the property of the Landscape Architect. The Landscape Architect bears no responsibility for the interpretation of these documents by the Contractor. Upon written application, the Landscape Architect will provide written clarification or supplementary information regarding the intent of the Contract Documents. The Landscape Architect will review Shop Drawings submitted by the Contractor for design conformance only.

Drawings are not to be scaled for construction. Contractor to verify all existing conditions and dimensions required to perform the work and report any discrepancies with the Contract Documents to the Landscape Architect before commencing work.

Positions of proposed or finished mechanical or electrical devices, fittings, and fixtures are indicated on Landscape Architectural drawings. The locations shown on the Landscape Architectural drawings given over the Mechanical and Electrical drawings. Those items not clearly located will be located as directed by the Landscape Architect.

These drawings are not to be used for construction unless noted below as "Issued for Construction".

All work to be carried out in conformance with the Code and Bylaws of the authorities having jurisdiction.

The Designer of these plans and specifications gives no warranty or representation to any party about the completeness of the representation by them. All contractors or subcontractors must satisfy themselves when bidding and at all times that they can properly construct the work represented by these plans.

PLANTING NOTES:

ALL PLANT MATERIALS TO BE LOAN GRASS NURSERY STOCK GROWN AND SUPPLIED IN ACCORDANCE WITH CURRENT STANDARDS AS ADOPTED BY THE CANADIAN NURSERY LANDSCAPE ASSOCIATION, LATEST METRIC EDITION.

NOT FOR CONSTRUCTION

LEGEND

- PROPOSED DECIDUOUS CANOPY TREE
- PROPOSED SHRUBS/ GROUNDCOVERS
- PROPERTY LINE
- L1 - LANDSCAPE LIGHTS
- L2 - BOLLARD LIGHTS
- L3 - SOFFIT LIGHTS
- L4 - BENCH/ STEP LIGHTS

ISSUE

10	
9	
8	
7	
6	
5	
4	
3	2022-06-03 RE-ISSUED FOR DP APPLICATION
2	2021-02-19 ISSUED FOR DP APPLICATION
1	2020-11-08 ISSUED FOR DP PRE-REVIEW (DIGITAL)

Janet Rosenberg & Studio
Landscape Architecture and Urban Design
4 416 594 8888 P 416 594 5748 www.jrlandscapes.com
148 Norwood Avenue, Toronto Ontario M6C 2S3 Canada

PINNACLE

601 BEACH CRESCENT

VANCOUVER

LEVEL 3 PLANTING PLAN

SCALE:	1:100
DRAWN:	MC
CHECKED:	GHRJ
PROJECT NUMBER:	17-042
DRAWING DATE:	2020-11-10

LT303



NOTES

The following notes shall apply to all drawings and associated documents.

Copyright of this drawing and design is reserved by the Designer. The drawing and all associated documents are an instrument of service by the Designer. The drawing and the information contained therein may not be reproduced in whole or in part without prior written permission of the Designer.

These Contract Documents are the property of the Landscape Architect. The Landscape Architect bears no responsibility for the interpretation of these documents by the Contractor. Upon written application, the Landscape Architect will provide written clarification or supplementary information regarding the intent of the Contract Documents. The Landscape Architect will review Shop Drawings submitted by the Contractor for design conformance only.

Drawings are not to be scaled for construction. Contractor to verify all existing conditions and dimensions required to perform the work and report any discrepancies with the Contract Documents to the Landscape Architect before commencing work.

Positions of exposed or finished mechanical or electrical devices, fittings, and fixtures are indicated on Landscape Architectural drawings. The locations shown on the Landscape Architectural drawings given over the Mechanical and Electrical drawings. Those items not clearly located will be located as directed by the Landscape Architect.

These drawings are not to be used for construction unless noted below as "Issued for Construction".

All work to be carried out in conformance with the Code and Bylaws of the authorities having jurisdiction.

The Designer of these plans and specifications gives no warranty or representation to any party about the completeness of the information represented by them. All contractors or subcontractors must satisfy themselves when bidding and at all times that they can properly construct the work represented by these plans.

PLANTING NOTES:

ALL PLANT MATERIALS TO BE NO.1 GRADE NURSERY STOCK GROWN AND SUPPLIED IN ACCORDANCE WITH CURRENT STANDARDS AS ADOPTED BY THE CANADIAN NURSERY LANDSCAPE ASSOCIATION, LATEST METRIC EDITION.

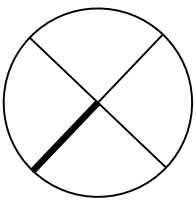
NOT FOR CONSTRUCTION

LEGEND

- PROPOSED DECIDUOUS CANOPY TREE
- PROPOSED SHRUBS/ GROUNDCOVERS
- PROPERTY LINE
- L1 - LANDSCAPE LIGHTS
- L2 - BOLLARD LIGHTS
- L3 - SOFFIT LIGHTS
- L4 - BENCH/ STEP LIGHTS

ISSUE

10	
9	
8	
7	
6	
5	
4	
3	
2	2021-02-19 ISSUED FOR DP APPLICATION
1	2020-11-10 ISSUED FOR DP PRE-REVIEW (DIGITAL)



Janet Rosenberg & Studio
Landscape Architecture and Urban Design
4 416 534 6555 F 416 535 3735 www.jrlandscapes.ca
145 Hornsfield Avenue, Toronto Ontario M5C 2S3 Canada

PINNACLE

601 BEACH CRESCENT

VANCOUVER

PLANTING PLAN
LEVEL 8

SCALE: 1/75
DRAWN: JRS
CHECKED: GHVJ
PROJECT NUMBER: 17-042
DRAWING DATE: 2020-11-10

LT308



PLANT LIST				
Quantity	Key	Botanical	Common	Size
Tree				
3	BP	<i>Betula pendula</i> 'Youngii'	European White Birch	50mm, WB
2	CJ	<i>Cercidiphyllum japonicum</i>	Katsura Tree	Clump, 300cm WB
1	CN	<i>Chamaecyparis nootkatensis</i> 'Pendula'	Nookta Cypress	250cm, WB
1	EJ	<i>Eriobotrya japonica</i>	Loquat	200cm, 15gal
1	FBT	<i>Ficus carica</i> 'Brown Turkey'	Common Fig	200cm, 15gal
1	PA	<i>Prunus avium</i> 'Compact Stella'	Bird Cherry	7gal
Shrub				
1	Dg	<i>Deutzia gracilis</i>	Slender Deutzia / Japanese Snow Flower	3gal
75	Ef	<i>Euonymus fortunei</i> 'Moonshadow'	Wintercreeper Euonymus	3gal
10	Ln	<i>Lonicera nitida</i> 'Briioni'	Edmee Gold Honeysuckle	3gal
6	Oh	<i>Osmanthus x Burkwoodii</i>	Burkwood Osmanthus	5gal
Vine				
5	Ca	<i>Clematis armandii</i> 'Apple Blossom'	Evergreen Clematis	3gal
Herbaceous				
32	al	<i>Anemanthele lessoniana</i>	Gossamer Grass	1gal
105	gs	<i>Geranium sanguineum</i> 'Dragon Heart'	Dragon Heart Cranesbill	1gal
26	mm	<i>Melanthus major</i>	Giant Honey Flower	1gal
25	pa	<i>Perovskia atriplicifolia</i>	Russian Sage	1gal
12	ro	<i>Rosmarinus officinalis</i>	Rosemary	1gal