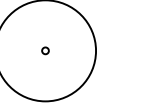
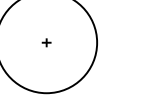
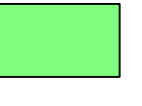
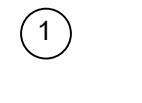




NOTES

The following notes shall apply to all drawings and associated documents.
 Copyright of this drawing and design is reserved by the Designer. The drawing and all associated documents are an instrument of service by the Designer. The drawing and the information contained therein may not be reproduced in whole or in part without prior written permission of the Designer.
 These Contract Documents are the property of the Landscape Architect. The Landscape Architect bears no responsibility for the interpretation of these documents by the Contractor. Upon written application the Landscape Architect will provide written clarification or supplementary information regarding the intent of the Contract Documents. The Landscape Architect will review Shop Drawings submitted by the Contractor for design conformance only.
 Drawings are not to be scaled for construction. Contractor to verify all existing conditions and dimensions required to perform the work and report any discrepancies with the Contract Documents to the Landscape Architect before commencing work.
 Features of equipment or finished mechanical or electrical devices, fittings and fixtures are indicated on Landscape Architectural drawings. The locations shown on the Landscape Architectural drawings govern over the Mechanical and Electrical drawings. Those items not clearly located will be located as directed by the Landscape Architect.
 These drawings are not to be used for construction unless noted below as "Issued for Construction".
 All work to be carried out in conformance with the Code and Bylaws of the authorities having jurisdiction.
 The Designer of these plans and specifications gives no warranty or representation in any part about the completeness of the information provided. All contractors or subcontractors must satisfy themselves when bidding and at all times that they can properly construct the work represented by these plans.

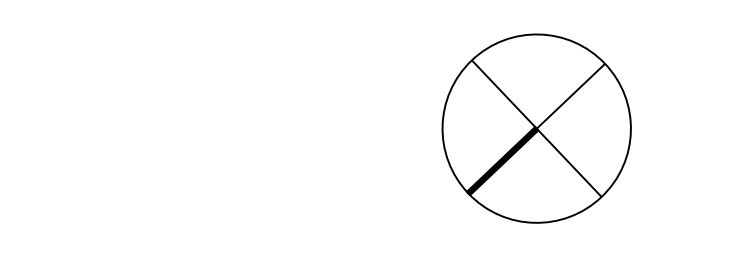
NOT FOR CONSTRUCTION

LEGEND

-  EXISTING TREES
-  PROPOSED DECIDUOUS CANOPY TREE
-  PLANTER (SOIL VOLUME)
-  PLANTER REFERENCE NUMBER
-  PROPERTY LINE
-  PLANTER (SOIL CELL)

ISSUE

- 10
- 9
- 8
- 7
- 6
- 5
- 4
- 3
- 2
- 1
- 2022-05-03 RE-ISSUED FOR DP APPLICATION
- 2020-02-19 ISSUED FOR DP APPLICATION
- 2020-11-30 ISSUED FOR DP PRE-REVIEW (DIGITAL)
- 2018-09-12 ISSUED FOR RECORDING



Janet Rosenberg & Studio
 Landscape Architecture and Urban Design
 4 416 938 9955 • 416 938 1716 www.jrlandscapes.com
 144 Hurontario Avenue, Toronto Ontario M5C 2B3 Canada

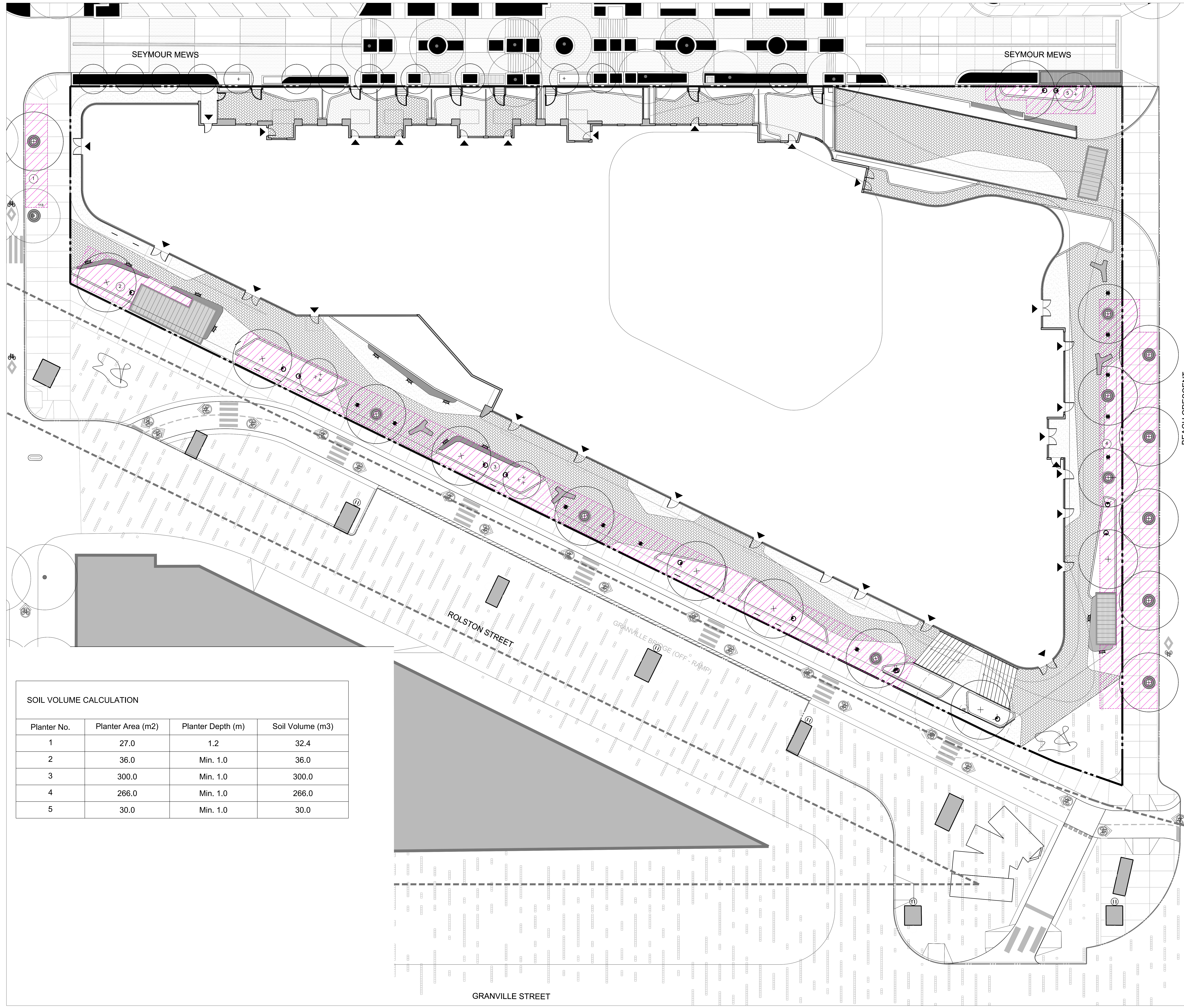
PINNACLE

601 BEACH CRESCENT
 VANCOUVER

LANDSCAPE SOIL VOLUME PLAN

SCALE: 1/125
 DRAWN: MC
 CHECKED: GHRJ
 PROJECT NUMBER: 17-042
 DRAWING DATE: 2020-11-10

L101



SOIL VOLUME CALCULATION

Planter No.	Planter Area (m2)	Planter Depth (m)	Soil Volume (m3)
1	27.0	1.2	32.4
2	36.0	Min. 1.0	36.0
3	300.0	Min. 1.0	300.0
4	266.0	Min. 1.0	266.0
5	30.0	Min. 1.0	30.0

NOTES

The following notes shall apply to all drawings and associated documents.
 Copyright of this drawing and design is reserved by the Designer. The drawing and all associated documents are an instrument of service by the Designer. The drawing and the information contained therein may not be reproduced in whole or in part without prior written permission of the Designer.
 These Contract Documents are the property of the Landscape Architect. The Landscape Architect bears no responsibility for the interpretation of these documents by the Contractor. Users who wish to utilize the Landscape Architect will provide written verification, certification or supplementary information regarding the intent of the Contract Documents. The Landscape Architect will review Shop Drawings submitted by the Contractor for design conformance only.
 Drawings are not to be scaled for construction. Contractor to verify all existing conditions and dimensions required to perform the work and report any discrepancies with the Contract Documents to the Landscape Architect before commencing work.
 Positions of proposed or fielded mechanical or electrical devices, fittings and fixtures are indicated on Landscape Architectural drawings. The locations shown on the Landscape Architectural drawings govern over the Mechanical and Electrical drawings. Those items not clearly located will be located as directed by the Landscape Architect.
 These drawings are not to be used for construction unless noted below as "Issued for Construction".
 All work to be carried out in conformance with the Code and Bylaws of the authorities having jurisdiction.
 The Designer of these plans and specifications gives no warranty or representation to any party about the completeness of the information provided by them. All contractors or subcontractors must satisfy themselves when taking all of the time that they can properly construct the work represented by these plans.

PLANTING NOTES:
 ALL PLANT MATERIAL TO BE NO. 1 GRADE NURSERY STOCK SPECIES AND SUPPLIED IN ACCORDANCE WITH CURRENT STANDARDS AS ADOPTED BY THE CANADIAN NURSERY LANDSCAPE ASSOCIATION LATEST METRIC SYSTEM.

NOT FOR CONSTRUCTION

LEGEND

- Lonicera nitida 'Briioni'
- Panicum virgatum
- Sarcococca hookeriana
- Perovskia atriplicifolia
- EXISTING TREES
- PROPOSED DECIDUOUS CANOPY TREE
- PROPOSED SHRUBS GROUNDCOVERS
- PROPERTY LINE
- L1 - LANDSCAPE LIGHTS
- L2 - BOLLARD LIGHTS
- L3 - SOFFIT LIGHTS
- L4 - BENCH/STEP LIGHTS
- L5 - LIGHT POLE

ISSUE

10	
9	
8	
7	
6	
5	2022-06-03 ISSUED FOR DP APPLICATION
4	2021-04-05 ISSUED FOR DP APPLICATION R1
3	2021-02-19 ISSUED FOR DP APPLICATION
2	2020-11-30 ISSUED FOR DP PRE-REVIEW (DIGITAL)
1	2018-09-12 ISSUED FOR RECORDING

Janet Rosenberg & Studio
 Landscape Architecture and Urban Design
 4 416 938 8888 • 4 416 938 1716 • www.jrlandscapes.com
 148 Hurontario Avenue, Toronto Ontario M5C 2B3 Canada

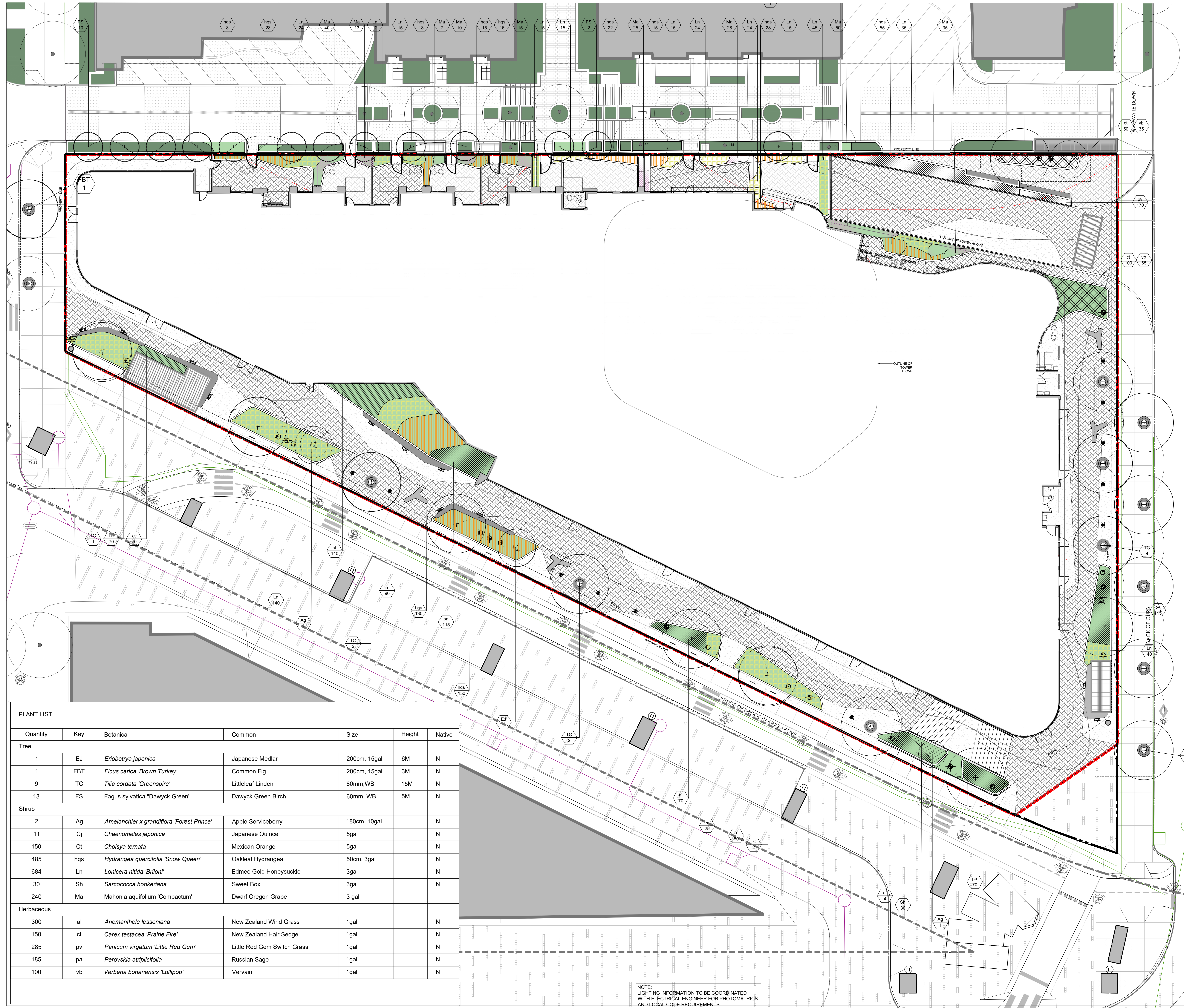
PINNACLE

601 BEACH CRESCENT

LANDSCAPE GROUND FLOOR PLANTING PLAN

SCALE: 1:125
 DRAWN: MC
 CHECKED: GHSJ
 PROJECT NUMBER: 17-042
 DRAWING DATE: 2022-11-10

L300



PLANT LIST

Quantity	Key	Botanical	Common	Size	Height	Native
Tree						
1	EJ	<i>Eriobotrya japonica</i>	Japanese Medlar	200cm, 15gal	6M	N
1	FBT	<i>Ficus carica</i> 'Brown Turkey'	Common Fig	200cm, 15gal	3M	N
9	TC	<i>Tilia cordata</i> 'Greenspire'	Littleleaf Linden	80mm, WB	15M	N
13	FS	<i>Fagus sylvatica</i> 'Dawyc Green'	Dawyc Green Birch	60mm, WB	5M	N
Shrub						
2	Ag	<i>Amelanchier x grandiflora</i> 'Forest Prince'	Apple Serviceberry	180cm, 10gal		N
11	Cj	<i>Chaenomeles japonica</i>	Japanese Quince	5gal		N
150	Ct	<i>Choisya ternata</i>	Mexican Orange	5gal		N
485	hqs	<i>Hydrangea quercifolia</i> 'Snow Queen'	Oakleaf Hydrangea	50cm, 3gal		N
684	Ln	<i>Lonicera nitida</i> 'Briioni'	Edmee Gold Honeysuckle	3gal		N
30	Sh	<i>Sarcococca hookeriana</i>	Sweet Box	3gal		N
240	Ma	<i>Mahonia aquifolium</i> 'Compactum'	Dwarf Oregon Grape	3 gal		N
Herbaceous						
300	al	<i>Anemanthele lessoniana</i>	New Zealand Wind Grass	1gal		N
150	ct	<i>Carex testacea</i> 'Prairie Fire'	New Zealand Hair Sedge	1gal		N
285	pv	<i>Panicum virgatum</i> 'Little Red Gem'	Little Red Gem Switch Grass	1gal		N
185	pa	<i>Perovskia atriplicifolia</i>	Russian Sage	1gal		N
100	vb	<i>Verbena bonariensis</i> 'Lollipop'	Vervain	1gal		N

NOTE: LIGHTING INFORMATION TO BE COORDINATED WITH ELECTRICAL ENGINEER FOR PHOTOMETRICS AND LOCAL CODE REQUIREMENTS.