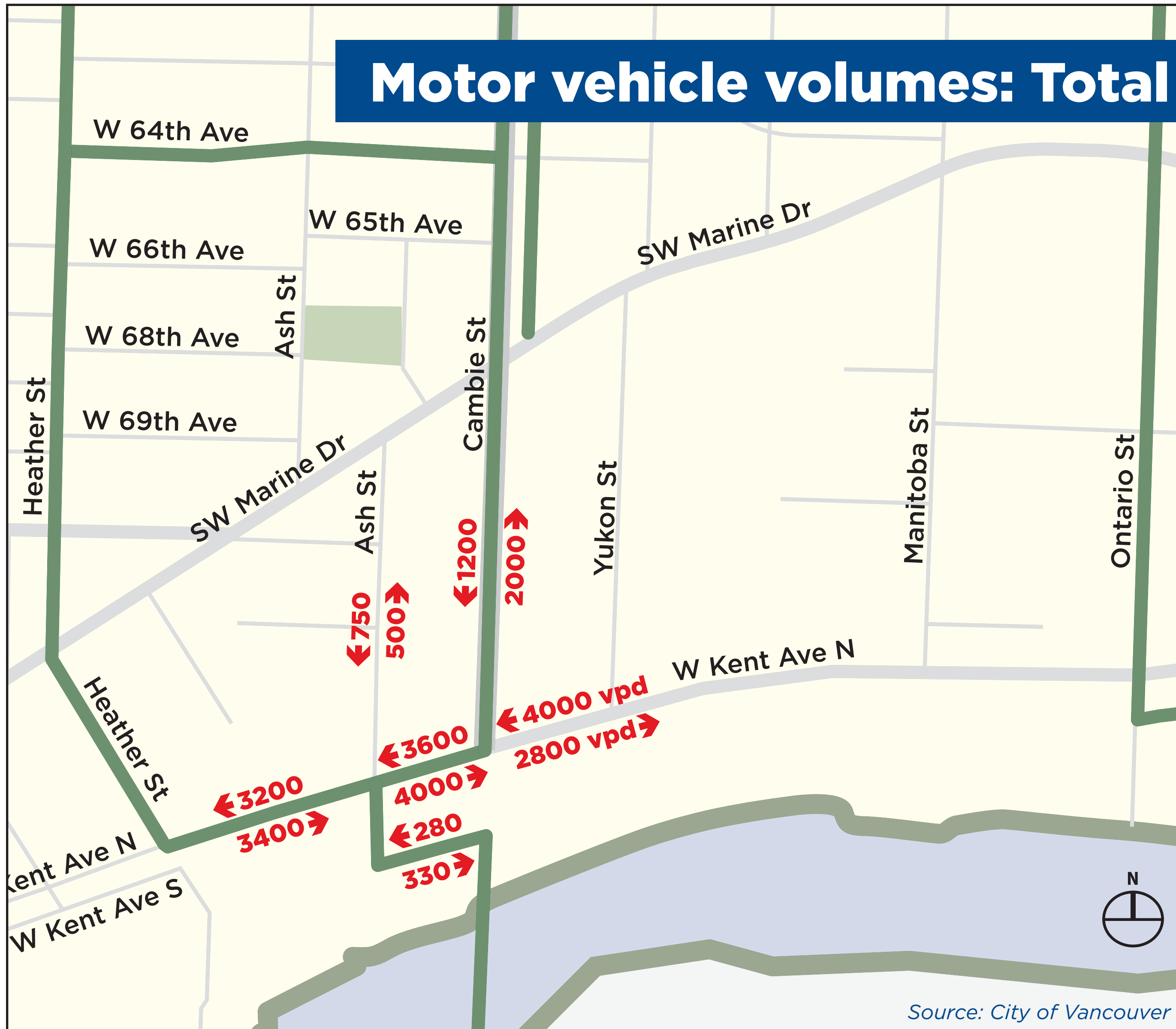


# Key Data

## Motor vehicle volumes: Total vehicles per day

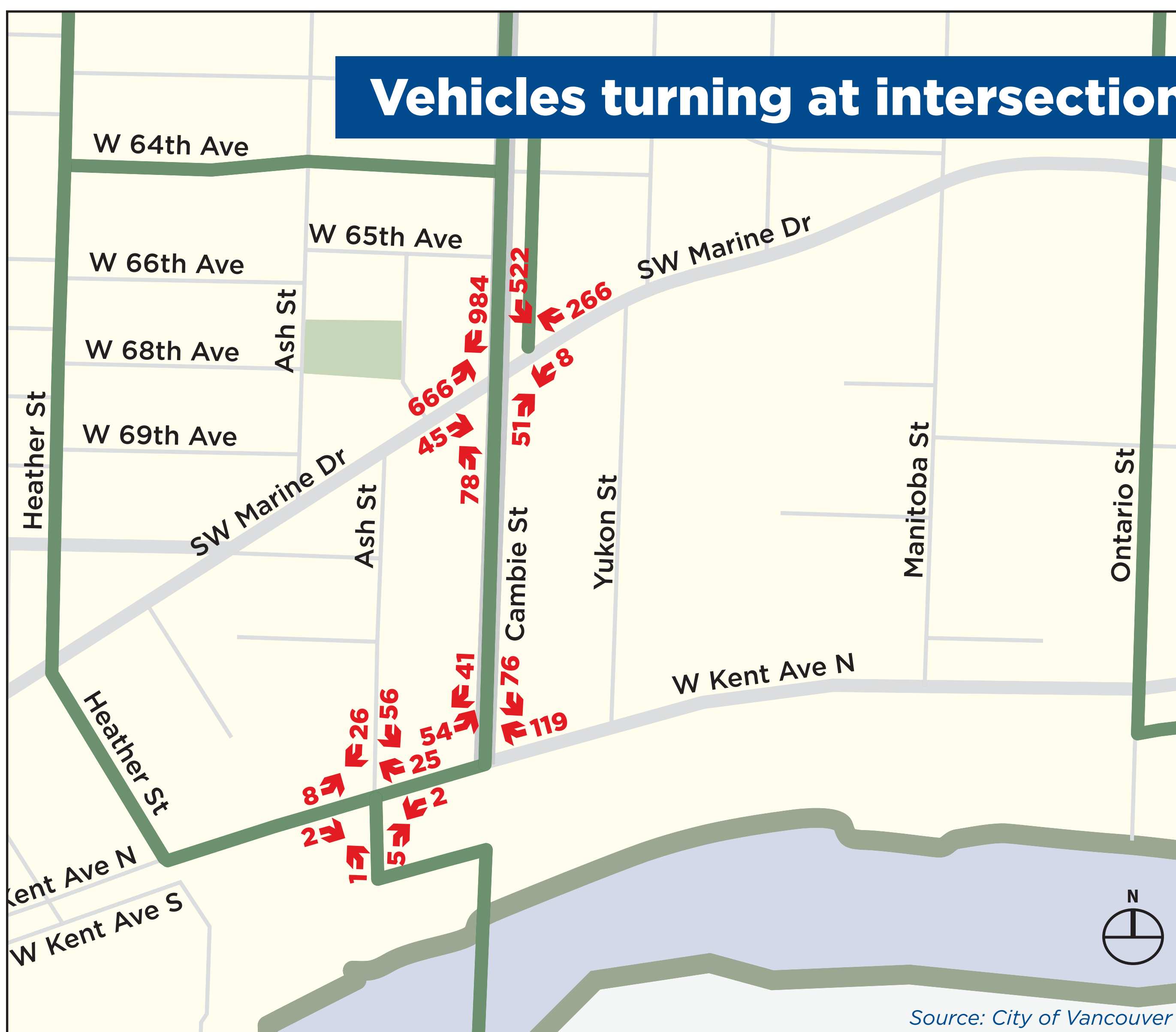


- Heavy vehicle volume on Kent Avenue North
- Moderate to heavy vehicle volume on Cambie Street
- Light vehicle volume on Kent Avenue South
- Significant number of trucks on all roads, which makes cycling on the road uncomfortable

### Legend

- Existing bike routes
  - Direction that vehicles are turning
  - 250 Number of vehicles turning during the busiest hours of the day
- All counts from Feb. 2013 except Cambie/Marine (from Nov. 2010)

## Vehicles turning at intersection: Afternoon rush hour



- Significant number of vehicles turning onto Cambie Street at Kent Avenue North
- Moderate number of vehicles turning right from northbound Cambie Street at SW Marine Drive including buses
- Moderate number of vehicles turning right from SW Marine Drive to southbound Cambie Street
- Many of the vehicles turning right from SW Marine Drive to southbound Cambie Street are stopping illegally to drop passengers off at Marine Drive Station

### Legend

- Existing bike routes
  - Direction that vehicles are turning
  - 250 Number of vehicles turning during the busiest hours of the day
- All counts from Feb. 2013 except Cambie/Marine (from Nov. 2010)