

April 4, 2019

MEMO TO : Mayor, Council & Park Board Commissioners

FROM : Paul Mochrie – Deputy City Manager, City of Vancouver
Malcolm Bromley - General Manager, Vancouver Board of Parks & Recreation

SUBJECT : **Japanese Beetle Incursion - Treatment Update**

Dear Mayor, Councillors, & Commissioners,

The City & Park Board have received orders from the Canadian Food Inspection Agency (CFIA) regarding treatment for an incursion of Japanese Beetles. This memo provides some background information on this high risk invasive pest and outlines the required treatment and containment actions.

Background

The Japanese Beetle (*Popillia japonica*) is an invasive plant pest that was first introduced to North America from Japan in 1916. They were discovered for the first time in BC as part of routine surveillance in 2017. This invasive pest is considered high risk for impact to the horticulture and food production industries. The larvae feed on roots of turf grass and other plants. Adults are heavy feeders attacking flowers, foliage, and fruit of more than 250 plant species including roses, blueberries, and grapevines. The discovery of this insect in the False Creek area led to the creation of a multi-agency working group dedicated to the eradication of the Japanese beetle from Vancouver. This group, which includes the CFIA, BC Ministry of Agriculture, Invasive Species Council of BC, BC Landscape & Nursery Association, and the City of Vancouver & Park Board, concluded that eradication would take several years to achieve.

In 2018, the CFIA issued orders to the City & Park Board to treat all turf on public lands (parks, boulevards, etc.) within 200 metres of every beetle trap catch from 2017. Nearly 31 hectares of public lands were treated in June and September 2018. The CFIA had also put into place a regulated area of movement control for soils and plant matter. This area was bounded by Burrard Street, West 12th Avenue, Clark Drive, and Burrard Inlet. A total of 8,276 beetles were captured last year in 98 traps with 94% of the beetles coming from David Lam Park.

2019 Updates & Actions

In early 2019, based on the survey results from the previous year, the CFIA issued an updated regulated area of movement control for soils and plant matter. The regulated area now includes downtown Vancouver, the West End, Stanley Park, and False Creek, and extends east to Clark Drive, south to 12th Avenue, and west to Burrard Street including Kits Point (see attached regulated area map). Restricting movement of soil/plants from this zone to outside of the area is intended to control the physical transportation of both larvae and adult beetles. The multiple City and Park Board departments impacted by this movement restriction, including Streets, Sewers, Urban Forestry, Park Horticulture, and Sanitation, have been working together to

overcome the operational challenges. This also has broader impacts to developers, private landscapers, and other members of the public.

On behalf of the BC Ministry of Agriculture, the CFIA issued another order to the City & Park Board to treat all turf grass on public lands (see attached treatment map). The map is based on Japanese beetle detections in 2018. Treatment is set to commence on April 7th at David Lam Park as it is the epicentre of the infestation. The product for treatment is called Acelepryn. It is considered a very low toxicity, low dose, high efficiency product with only one application required per year.

Park Board staff are currently finalizing the 2019 treatment plan and City and Park Board Communication Teams are working with staff from the CFIA, Invasive Species Council of BC, and the Ministry of Agriculture to coordinate and plan public notification and education of this issue.

We will keep both City Council and Park Board Commissioners updated as further details become available.

Regards,



Paul Mochrie | Deputy City Manager
City of Vancouver
604.873.7666



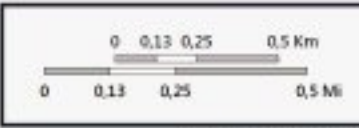
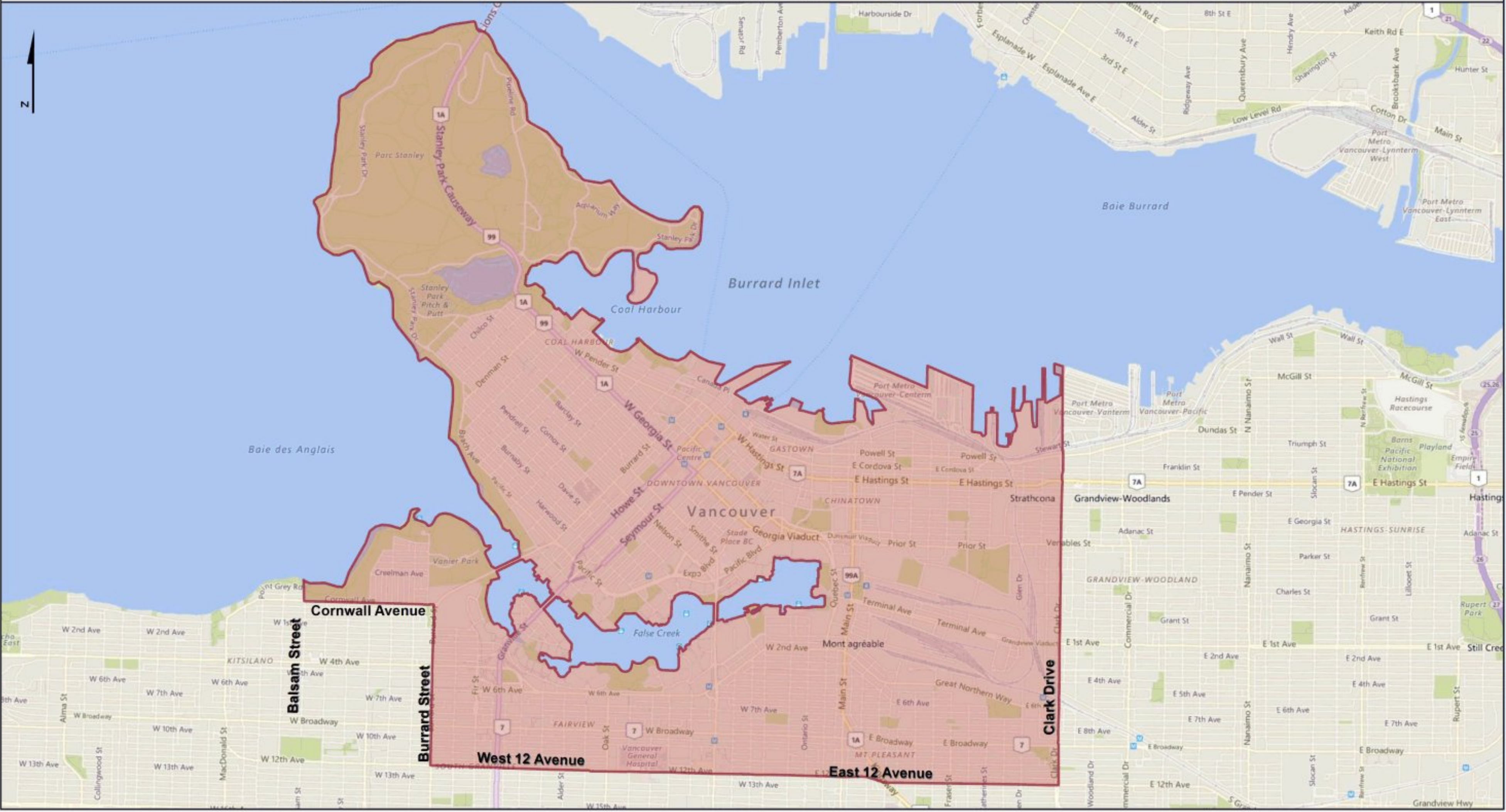
Malcolm Bromley | General Manager
Vancouver Board of Parks and Recreation
604.257.8448

/sd/clc

Copy to: City Manager's Correspondence Group
CoV Corporate Leadership Team
PB Senior Leadership Team
PB Communications

Japanese Beetle | Scarabée japonais – *Popillia japonica*

Regulated Area of Vancouver, British Columbia | Région réglementée de Vancouver, Colombie-Britannique



Coordinate System | Système de coordonnées: PCS Lambert Conformal Conic
 © 2018 CFIA and its various data sources | l'ACIA et ses diverses sources de données.

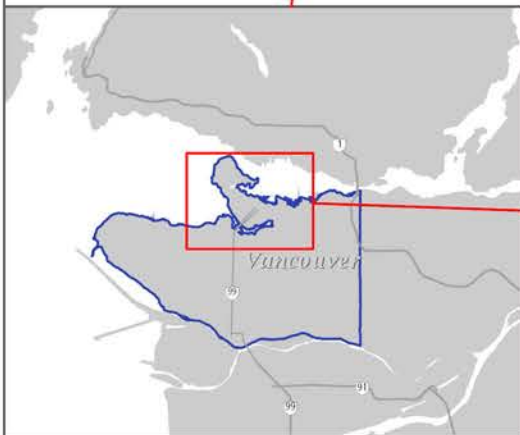
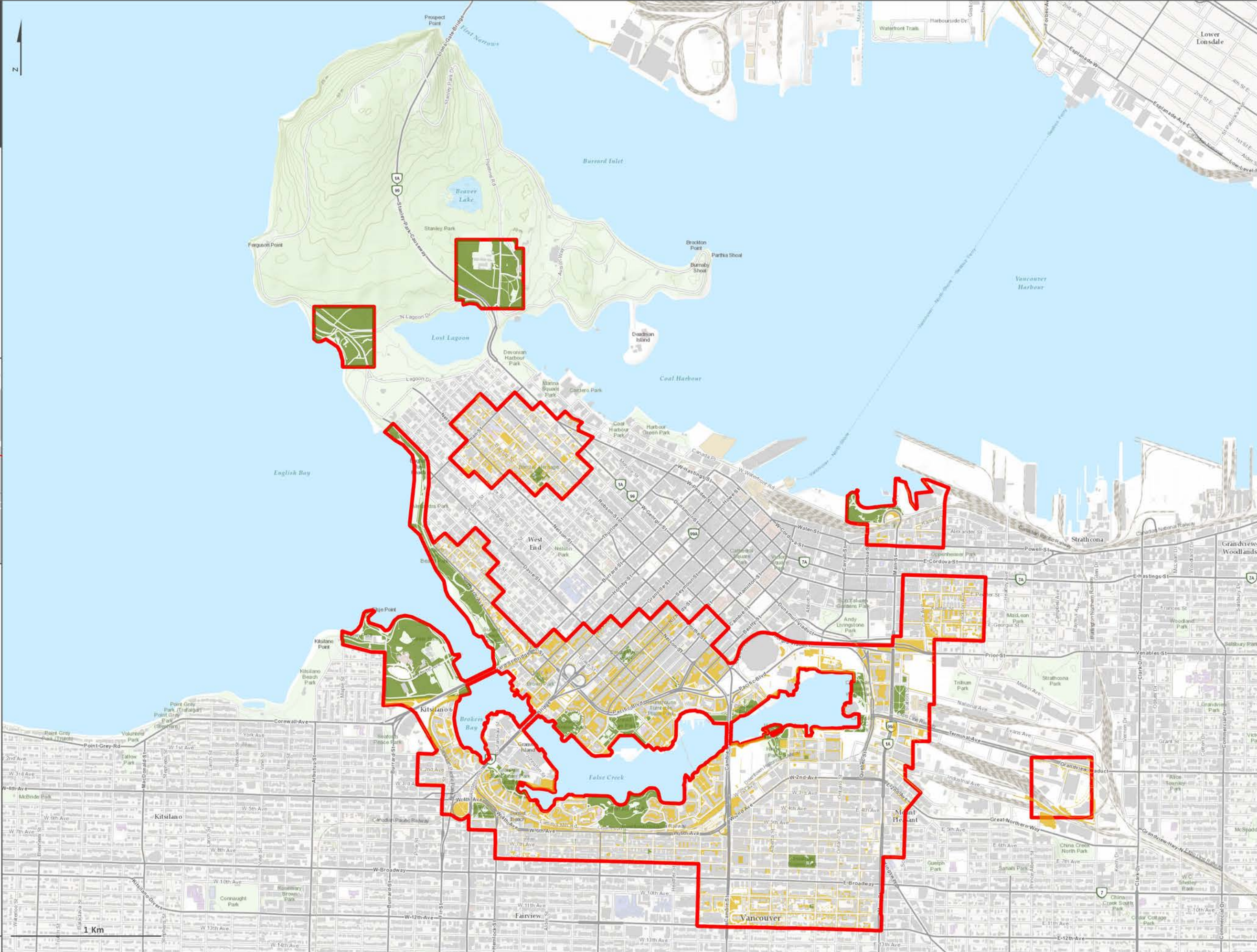
Regulated Area | Région réglementée

Yr/An : 2018
 Mo/M : 12

© 2018 The Canadian Food Inspection Agency (CFIA), Mapping and GIS Services.
 L'Agence canadienne d'inspection des aliments, Cartographie et services SIG.

While this map may not be free from error or omission, care has been taken to ensure the best possible quality. CFIA makes no representations or warranties, either expressed or implied, as to the accuracy of the information presented and the client assumes the entire risk as to the use of any or all information. / Malgré ce carte peut-être pas libre de toute erreur ou omission, toutes les précautions ont été prises pour assurer la meilleure qualité possible. L'ACIA n'offre aucune garantie explicite ou implicite quant à l'exactitude de l'information présentée, les clients acceptent pleinement les risques liés à l'utilisation d'une partie ou de l'ensemble de cette information.

2019 Japanese Beetle Treatment Areas City of Vancouver



Detailed Treatment Area

- Park (67 HA/ 165 AC)
- Public/ Private (82 HA/ 202 AC)

General Treatment

- Zone (631 HA/ 1560 AC)

NOTE: The general treatment zone was created using a 200-metre square buffer around each 2018 CFA positive trap location and modified to match road features where it was easily applicable.

Coordinate System: 2018-11-06
 © 2018 CFA and its various data sources. 10:38 AM

The Canadian Food Inspection Agency (CFIA), Mapping and GIS Services, London, Ontario

While this map may not be free from error or omission, care has been taken to ensure the best possible quality. The CFIA makes no representations or warranties, either expressed or implied, as to the accuracy of the information presented and the client assumes the entire risk as to the use of any or all information.