



September 12, 2019

MEMO TO : Park Board Commissioners

FROM : Malcolm Bromley
General Manager, Vancouver Board of Parks and Recreation

SUBJECT : **Pump Stations Replacement Project – Public Engagement & Next Steps**

Dear Commissioners,

This memo provides an overview of the Pump Stations Replacement Project, which includes upgrades to three (3) existing sewage pump stations located in or adjacent to existing parks. The project is led by the City of Vancouver Engineering Department (COV ENG) in coordination with Park Board staff.

Background

Pump stations are critical pieces of infrastructure that are necessary to protect public health and the environment. Their purpose is to collect and convey sewage from low points in the sewer system to the Iona Island Wastewater Treatment Plant in order to avoid discharging the flow directly into water bodies around Metro Vancouver. These stations play a key role in protecting water quality and enabling the recreational use of water bodies around the City. The Pump Stations Replacement Project includes the Jericho Pump Station located in Jericho Beach Park, the Dunbar Pump Station located adjacent to Musqueam Park, and the Raymur Pump Station located in Strathcona Park. These pump stations have reached the end of their service lives and need to be replaced.

COV ENG is committed to working closely with the Park Board to ensure these three pump station projects are delivered successfully with mutual benefits. They will follow a process similar to the Glen Pump Station upgrade within China Creek North Park, which was integrated into the Park Board led [China Creek Park North renewal project](#). The package of park benefits associated with that project included a public washroom, a new drinking fountain and other amenities. The project is currently under construction and is scheduled to be complete in summer 2020.

The COV ENG team has been working with Park Board staff to discuss project requirements, and to identify potential park benefits that may be included to offset the impact of the necessary pump station upgrades. The proposed benefits will be refined through the planning and design phases and will be verified through the public engagement processes. COV ENG will continue to work with Park Board staff throughout the project and will work collaboratively during public engagement to finalize the benefit package. Substantial completion of this project is planned for December 2022.

The Jericho Pump Station was built in 1977, and is located within Jericho Beach Park along the east edge of the park at W 2nd Avenue. The catchment area is shown in orange on the left side of Figure 1 and in more detail in Appendix A. In order to prevent the loss of additional green space within the park, Park Board staff have requested that COV Engineering explore the

possibility, including the cost implications and technical feasibility, of relocating the existing pump station into a Park Board owned and operated parking lot located adjacent to the park to the east of the existing pump station.

The Dunbar Pump Station, built in 1967, is located adjacent to the south side of Musqueam Park, west of Dunbar Street on the north side of 49th Avenue. The catchment area is shown in red on the bottom of Figure 1 and in more detail in Appendix B. While the pump station will remain at the current location just outside the park boundary, the use of a portion of the park adjacent to the station will be required for construction. Park Board staff have requested that invasive plants in the construction area and adjacent grounds be removed and capped with wood chips or a similar material so that native species restoration after construction can occur in partnership with the Musqueam First Nation.

The Raymur Pump Station was built in 1962, and is located within an easement in Strathcona Park adjacent to the Cottonwood Community Garden, north of Malkin Avenue on the west side of Raymur Avenue. The catchment area is shown in blue on the right side of Figure 1 and in more detail in Appendix C. This location provides many options for project related benefits to park users and the adjacent Cottonwood Community Garden, however as it is located along one of the routes being considered in the False Creek Flats Arterial project, work at this location will be delayed.

Figure 1 – Park Pump Stations – Site Map





Public Engagement

Staff from COV ENG and the Park Board will conduct public open houses to inform the public of the project, to identify potential impacts and community values, to receive feedback on the design and proposed benefits to the park, and to identify additional benefit opportunities. The project team is committed to a successful collaboration with Park Board and consultation with the public, and COV ENG is committed to providing a public benefit package that will offset park impacts, be appropriate for the project, and be beneficial to park users and the general public.

Each pump station will have separate open houses, which will be advertised through project notification signage in the parks, flyers distributed throughout the neighbourhood in the area proximate to the site (2-block radius), and advertising on the project website. Staff will meet with stakeholder groups as necessary and consult with our First Nations partners regarding the proposed projects. The project team will also meet with various Park Board staff groups to identify impacts and develop appropriate mitigation strategies. It is anticipated that public engagement for the Jericho and Dunbar pump station upgrades will begin in the fall of 2019 and conclude in early 2020, with public consultation on the Raymur pump station upgrades remaining on hold pending the outcome of the False Creek Flats Arterial project.

Staff will report back once public engagement is complete and prior to moving into detailed design. This may occur separately for the Raymur station should the timeline for this upgrade differ significantly from the other stations.

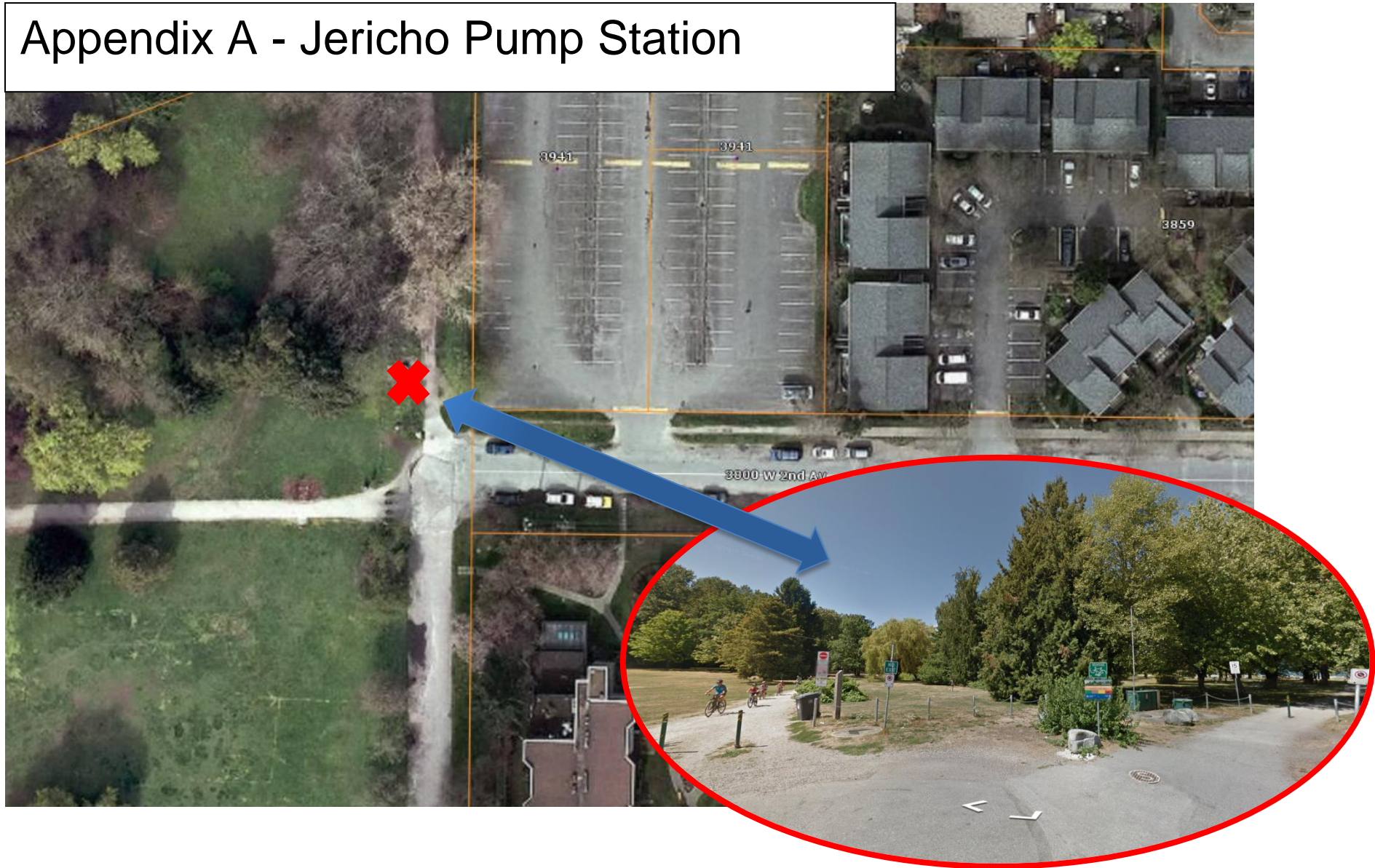
Regards,

A handwritten signature in black ink, appearing to read "Malcolm Bromley". The signature is fluid and cursive, with a long horizontal stroke at the end.

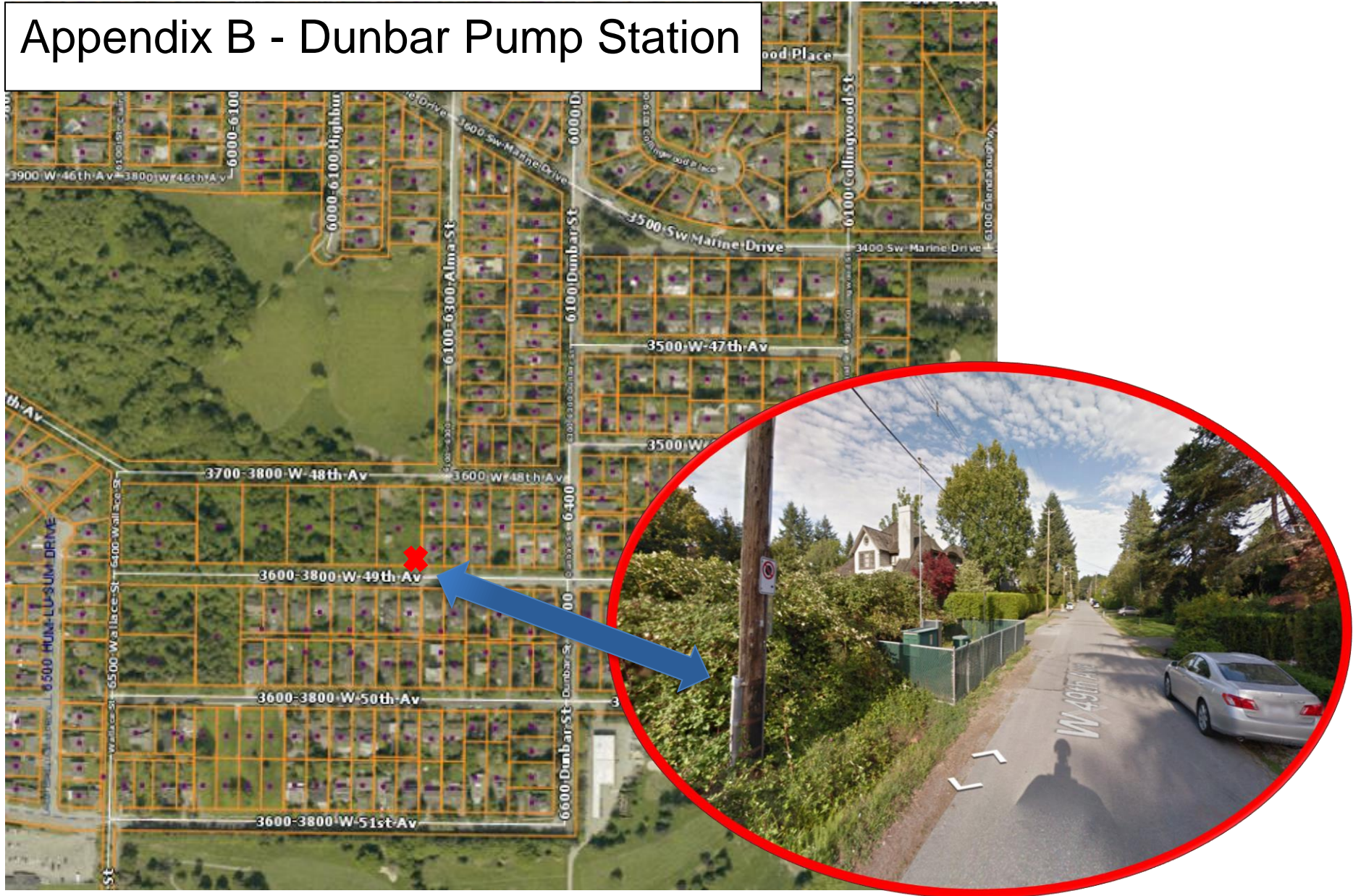
Malcolm Bromley
General Manager - Vancouver Board of Parks and Recreation

Copy to: PB Senior Leadership Team
Park Development
PB Communications

Appendix A - Jericho Pump Station



Appendix B - Dunbar Pump Station



Appendix C - Raymur Pump Station

