

[illegible]

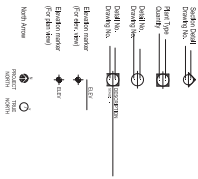
## GENERAL NOTES

- Click the **REMARKS** tab to enter a description of individual test results and any other pertinent information.
- Click **OK** to save the remarks.
- Click **Cancel** to exit the remarks screen.
- Click **Print** to print the remarks.
- Click **Help** for more information.
- Click **Close** to exit the remarks screen.
- Click **Back** to return to the previous screen.
- Click **Forward** to advance to the next screen.
- Click **Home** to return to the home screen.
- Click **Exit** to exit the application.
- Click **Refresh** to refresh the data.
- Click **Search** to search for a specific record.
- Click **Filter** to filter the data.
- Click **Sort** to sort the data.
- Click **Group** to group the data.
- Click **Unlink** to unlink the data.
- Click **Link** to link the data.
- Click **Copy** to copy the data.
- Click **Paste** to paste the data.
- Click **Delete** to delete the data.
- Click **Insert** to insert the data.
- Click **Update** to update the data.
- Click **Save** to save the data.
- Click **Cancel** to cancel the data.
- Click **OK** to confirm the data.
- Click **Yes** to confirm the data.
- Click **No** to deny the data.
- Click **Abort** to abort the data.
- Click **Ignore** to ignore the data.
- Click **Apply** to apply the data.
- Click **Commit** to commit the data.
- Click **Rollback** to rollback the data.
- Click **Undo** to undo the data.
- Click **Redo** to redo the data.
- Click **Zoom In** to zoom in the data.
- Click **Zoom Out** to zoom out the data.
- Click **Zoom Reset** to reset the zoom.
- Click **Zoom Full** to zoom full the data.
- Click **Zoom Fit** to zoom fit the data.
- Click **Zoom Width** to zoom width the data.
- Click **Zoom Height** to zoom height the data.
- Click **Zoom Auto** to zoom auto the data.
- Click **Zoom Manual** to zoom manual the data.
- Click **Zoom Default** to zoom default the data.
- Click **Zoom Custom** to zoom custom the data.
- Click **Zoom Preset** to zoom preset the data.
- Click **Zoom User** to zoom user the data.
- Click **Zoom System** to zoom system the data.
- Click **Zoom Admin** to zoom admin the data.
- Click **Zoom Super** to zoom super the data.
- Click **Zoom Root** to zoom root the data.
- Click **Zoom Guest** to zoom guest the data.
- Click **Zoom Anonymous** to zoom anonymous the data.
- Click **Zoom Public** to zoom public the data.
- Click **Zoom Private** to zoom private the data.
- Click **Zoom Protected** to zoom protected the data.
- Click **Zoom Secure** to zoom secure the data.
- Click **Zoom Encrypted** to zoom encrypted the data.
- Click **Zoom Decrypted** to zoom decrypted the data.
- Click **Zoom Compressed** to zoom compressed the data.
- Click **Zoom Uncompressed** to zoom uncompressed the data.
- Click **Zoom Archived** to zoom archived the data.
- Click **Zoom Unarchived** to zoom unarchived the data.
- Click **Zoom Backed Up** to zoom backed up the data.
- Click **Zoom Not Backed Up** to zoom not backed up the data.
- Click **Zoom Verified** to zoom verified the data.
- Click **Zoom Not Verified** to zoom not verified the data.
- Click **Zoom Valid** to zoom valid the data.
- Click **Zoom Invalid** to zoom invalid the data.
- Click **Zoom Correct** to zoom correct the data.
- Click **Zoom Incorrect** to zoom incorrect the data.
- Click **Zoom Accurate** to zoom accurate the data.
- Click **Zoom Inaccurate** to zoom inaccurate the data.
- Click **Zoom Precise** to zoom precise the data.
- Click **Zoom Imprecise** to zoom imprecise the data.
- Click **Zoom Detailed** to zoom detailed the data.
- Click **Zoom Summary** to zoom summary the data.
- Click **Zoom Detailed View** to zoom detailed view the data.
- Click **Zoom Summary View** to zoom summary view the data.
- Click **Zoom Full Screen** to zoom full screen the data.
- Click **Zoom Windowed** to zoom windowed the data.
- Click **Zoom Maximized** to zoom maximized the data.
- Click **Zoom Restored Down** to zoom restored down the data.
- Click **Zoom Normal** to zoom normal the data.
- Click **Zoom Small** to zoom small the data.
- Click **Zoom Large** to zoom large the data.
- Click **Zoom Default Size** to zoom default size the data.
- Click **Zoom Custom Size** to zoom custom size the data.
- Click **Zoom Preset Size** to zoom preset size the data.
- Click **Zoom User Size** to zoom user size the data.
- Click **Zoom System Size** to zoom system size the data.
- Click **Zoom Admin Size** to zoom admin size the data.
- Click **Zoom Super Size** to zoom super size the data.
- Click **Zoom Root Size** to zoom root size the data.
- Click **Zoom Guest Size** to zoom guest size the data.
- Click **Zoom Anonymous Size** to zoom anonymous size the data.
- Click **Zoom Public Size** to zoom public size the data.
- Click **Zoom Private Size** to zoom private size the data.
- Click **Zoom Protected Size** to zoom protected size the data.
- Click **Zoom Secure Size** to zoom secure size the data.
- Click **Zoom Encrypted Size** to zoom encrypted size the data.
- Click **Zoom Decrypted Size** to zoom decrypted size the data.
- Click **Zoom Compressed Size** to zoom compressed size the data.
- Click **Zoom Uncompressed Size** to zoom uncompressed size the data.
- Click **Zoom Archived Size** to zoom archived size the data.
- Click **Zoom Unarchived Size** to zoom unarchived size the data.
- Click **Zoom Backed Up Size** to zoom backed up size the data.
- Click **Zoom Not Backed Up Size** to zoom not backed up size the data.
- Click **Zoom Verified Size** to zoom verified size the data.
- Click **Zoom Not Verified Size** to zoom not verified size the data.
- Click **Zoom Valid Size** to zoom valid size the data.
- Click **Zoom Invalid Size** to zoom invalid size the data.
- Click **Zoom Correct Size** to zoom correct size the data.
- Click **Zoom Incorrect Size** to zoom incorrect size the data.
- Click **Zoom Accurate Size** to zoom accurate size the data.
- Click **Zoom Inaccurate Size** to zoom inaccurate size the data.
- Click **Zoom Precise Size** to zoom precise size the data.
- Click **Zoom Imprecise Size** to zoom imprecise size the data.
- Click **Zoom Detailed Size** to zoom detailed size the data.
- Click **Zoom Summary Size** to zoom summary size the data.
- Click **Zoom Detailed View Size** to zoom detailed view size the data.
- Click **Zoom Summary View Size** to zoom summary view size the data.
- Click **Zoom Full Screen Size** to zoom full screen size the data.
- Click **Zoom Windowed Size** to zoom windowed size the data.
- Click **Zoom Maximized Size** to zoom maximized size the data.
- Click **Zoom Restored Down Size** to zoom restored down size the data.
- Click **Zoom Normal Size** to zoom normal size the data.
- Click **Zoom Small Size** to zoom small size the data.
- Click **Zoom Large Size** to zoom large size the data.
- Click **Zoom Default Size Size** to zoom default size size the data.
- Click **Zoom Custom Size Size** to zoom custom size size the data.
- Click **Zoom Preset Size Size** to zoom preset size size the data.
- Click **Zoom User Size Size** to zoom user size size the data.
- Click **Zoom System Size Size** to zoom system size size the data.
- Click **Zoom Admin Size Size** to zoom admin size size the data.
- Click **Zoom Super Size Size** to zoom super size size the data.
- Click **Zoom Root Size Size** to zoom root size size the data.
- Click **Zoom Guest Size Size** to zoom guest size size the data.
- Click **Zoom Anonymous Size Size** to zoom anonymous size size the data.
- Click **Zoom Public Size Size** to zoom public size size the data.
- Click **Zoom Private Size Size** to zoom private size size the data.
- Click **Zoom Protected Size Size** to zoom protected size size the data.
- Click **Zoom Secure Size Size** to zoom secure size size the data.
- Click **Zoom Encrypted Size Size** to zoom encrypted size size the data.
- Click **Zoom Decrypted Size Size** to zoom decrypted size size the data.
- Click **Zoom Compressed Size Size** to zoom compressed size size the data.
- Click **Zoom Uncompressed Size Size** to zoom uncompressed size size the data.
- Click **Zoom Archived Size Size** to zoom archived size size the data.
- Click **Zoom Unarchived Size Size** to zoom unarchived size size the data.
- Click **Zoom Backed Up Size Size** to zoom backed up size size the data.
- Click **Zoom Not Backed Up Size Size** to zoom not backed up size size the data.
- Click **Zoom Verified Size Size** to zoom verified size size the data.
- Click **Zoom Not Verified Size Size** to zoom not verified size size the data.
- Click **Zoom Valid Size Size** to zoom valid size size the data.
- Click **Zoom Invalid Size Size** to zoom invalid size size the data.
- Click **Zoom Correct Size Size** to zoom correct size size the data.
- Click **Zoom Incorrect Size Size** to zoom incorrect size size the data.
- Click **Zoom Accurate Size Size** to zoom accurate size size the data.
- Click **Zoom Inaccurate Size Size** to zoom inaccurate size size the data.
- Click **Zoom Precise Size Size** to zoom precise size size the data.
- Click **Zoom Imprecise Size Size** to zoom imprecise size size the data.
- Click **Zoom Detailed Size Size** to zoom detailed size size the data.
- Click **Zoom Summary Size Size** to zoom summary size size the data.
- Click **Zoom Detailed View Size Size** to zoom detailed view size size the data.
- Click **Zoom Summary View Size Size** to zoom summary view size size the data.
- Click **Zoom Full Screen Size Size** to zoom full screen size size the data.
- Click **Zoom Windowed Size Size** to zoom windowed size size the data.
- Click **Zoom Maximized Size Size** to zoom maximized size size the data.
- Click **Zoom Restored Down Size Size** to zoom restored down size size the data.
- Click **Zoom Normal Size Size** to zoom normal size size the data.
- Click **Zoom Small Size Size** to zoom small size size the data.
- Click **Zoom Large Size Size** to zoom large size size the data.
- Click **Zoom Default Size Size Size** to zoom default size size size the data.
- Click **Zoom Custom Size Size Size** to zoom custom size size size the data.
- Click **Zoom Preset Size Size Size** to zoom preset size size size the data.
- Click **Zoom User Size Size Size** to zoom user size size size the data.
- Click **Zoom System Size Size Size** to zoom system size size size the data.
- Click **Zoom Admin Size Size Size** to zoom admin size size size the data.
- Click **Zoom Super Size Size Size** to zoom super size size size the data.
- Click **Zoom Root Size Size Size** to zoom root size size size the data.
- Click **Zoom Guest Size Size Size** to zoom guest size size size the data.
- Click **Zoom Anonymous Size Size Size** to zoom anonymous size size size the data.
- Click **Zoom Public Size Size Size** to zoom public size size size the data.
- Click **Zoom Private Size Size Size** to zoom private size size size the data.
- Click **Zoom Protected Size Size Size** to zoom protected size size size the data.
- Click **Zoom Secure Size Size Size** to zoom secure size size size the data.
- Click **Zoom Encrypted Size Size Size** to zoom encrypted size size size the data.
- Click **Zoom Decrypted Size Size Size** to zoom decrypted size size size the data.
- Click **Zoom Compressed Size Size Size** to zoom compressed size size size the data.
- Click **Zoom Uncompressed Size Size Size** to zoom uncompressed size size size the data.
- Click **Zoom Archived Size Size Size** to zoom archived size size size the data.
- Click **Zoom Unarchived Size Size Size**

## DRAWING LIST

GENERAL	
1.0	COVER PAGE AND GENERAL INFORMATION
1.0.1	KEY PLANS
<b>LANDSCAPE ARCHITECTURAL DRAWINGS</b>	
1.1	TREE IMAGINATION PLAN
1.2	LANDSCAPE PLAN - PARKLET PLAZA
1.2.1	LANDSCAPE PLAN - LOWER STREET STRIPS
1.2.2	LANDSCAPE PLAN - NORTH AKA
1.2.3	LANDSCAPE PLAN - SOUTH AKA
1.2.4	LANDSCAPE PLAN - SOUTH AKA
1.3	LANDSCAPE CROSS-SECTIONS
1.3.1	LANDSCAPE CROSS-SECTION
1.3.2	LANDSCAPE CROSS-SECTION
1.4	PAVING PATTERN DETAIL

## SITE AERIAL PLAN

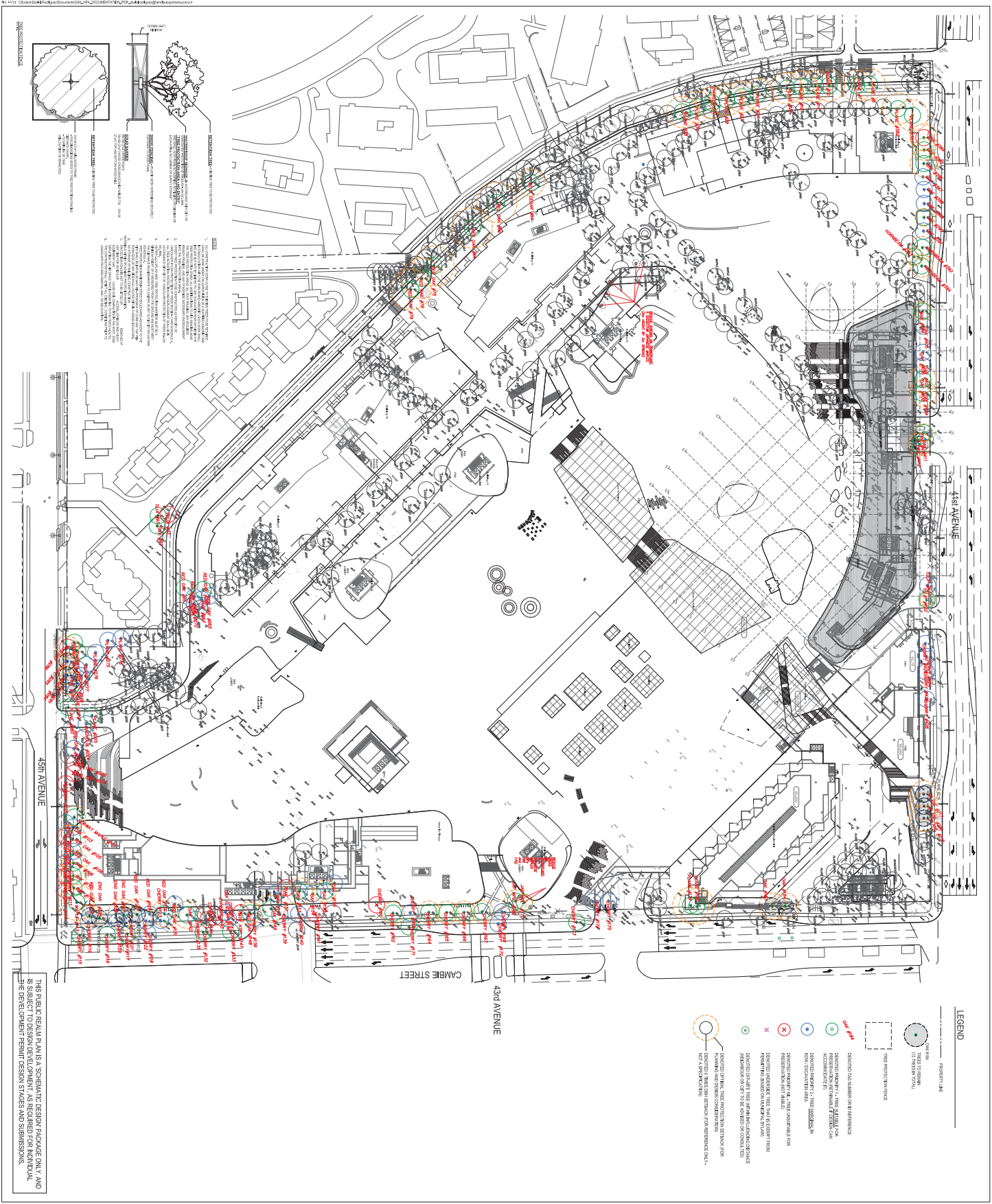
LANDSCAPE ARCHITECTURAL  
SYMBOLS

THIS PUBLIC REALM PLAN IS A 'SCHEMATIC DESIGN' PACKAGE ONLY, AND IS SUBJECT TO DESIGN DEVELOPMENT, AS REQUIRED FOR INDIVIDUAL DEVELOPMENT PERMIT DESIGN STAGES AND SUBMISSIONS.

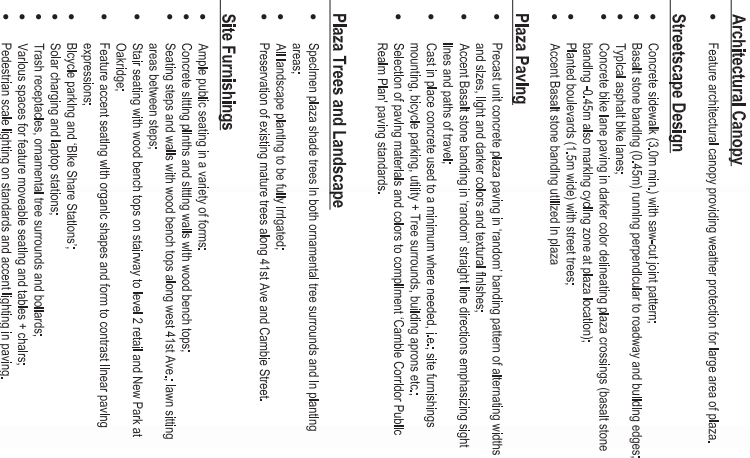




TREEMANAGEMENT PLAN	
DATE	ISSUED
SEP 19, 2017	AFICM
SCALE	ORCSO
1:500	CMACP
201902	

[1.0]





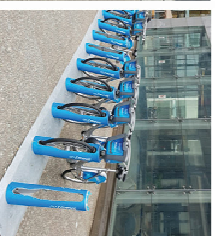
- Feature architectural canopy providing weather protection for large area of plaza

- Concrete sidewalk (3.0 mm), with saw-cut joint pattern.
- Basalt stone banding (0.45m) running perpendicular to roadway and building edges.
- Typical asphalt base lanes.
- Concrete blue line paving in darker color delineating plaza crossings (basalt stone banding 4.25m also marking off riding zone at plaza location).
- Painted boulevards (1.5m wide) with steel trees.
- Acorn Basalt stone banding utilized in plaza.

- Prepress will create **stencils** paving in "random" herringbone pattern of alternating widths and sizes, light and darker colors and textural finishes.
- Accents: Basalt stone bordering in random straight line directions emphasizing sight lines and paths of travel.
- Cast in place concrete used to a minimum where needed, i.e., site furnishings mounting, bicycle parking, utility + Tree surrounds, building aprons etc.,
- Selection of paving materials and colors to complement Cambridge Public Realm Plan paving standards.

- Specimen plaza shade trees in both ornamental tree surrounds and in planting areas.
- All landscape planting to be fully irrigated.
- Preservation of existing mature trees along 41st Ave and Cambie Street.

- **Ample public seating** in a variety of forms.
- **Concrete sitting platforms** and sitting walls with wood bench tops.
- **Seating steps and walls** with wood bench tops along west 1st Ave.; lean sitting areas between steps.
- **Seating** with wood bench tops on stairway to level 2 oval and New Park at Oldgate.
- **Feature accent seating** with organic shapes and form to contrast linear paving expressions.
- **Bicycle parking** and Bike Share Stations.
- **Solar charging** and laptop stations.
- **Trash receptacles, ornamental tree surrounds and bollards.**
- **Various spaces for feature movable seating and tables + chairs.**
- **Perforated scale lighting** on standards and accent lighting in paving.



## CASUAL / SOCIAL SEATING

## SOLAR CHARGING STATION

BIKE SHARE STATIONS



## SITE FURNISHINGS

TREE GRATE

THIS PUBLIC REALM PLAN IS A SCHEMATIC DESIGN PACKAGE ONLY, AND IS SUBJECT TO DESIGN DEVELOPMENT. AS REQUIRED FOR INDIVIDUAL DEVELOPMENT PERMIT DESIGN STAGES AND SUBMISSIONS,





## Plaza Paving

- Presses into concrete plaza paving in 'random' bending pattern of alternating widths and sizes, light and darker colors and textured finishes.
- Acorn: Based upon bending in random straight line directions emphasizing sight lines and points of travel.
- Cast in place concrete used in a minimum where needed, i.e., site furnishings mounting brackets, utility + Tree surrounds, building aprons etc.,
- Selection of paving materials and colors to complement Cambie Corridor Public Realm Plan paving standards.

### Site Furnishings

- Public seating in a variety of forms:
- Concrete sitting plinths and sitting walls with wood bench tops.
- Slats seating with wood bench tops on stairways to New Park at Oakridge.
- Feature accent seating with organic shapes and turn to contrast linear paving expressions.
- Bicycle parking.
- Trash receptacles, ornamental tree surrounds and bollards.
- Spaces for tables + chairs in front of commercial + retail units.
- Pedestrian scale lighting on footcandle and accent lighting in paving.

## Plaza Trees and Landscape

- Specimen plaza shade trees in both ornamental tree surrounds and in planting areas;
- All landscape planting to be fully irrigated;

## Streetscape Design

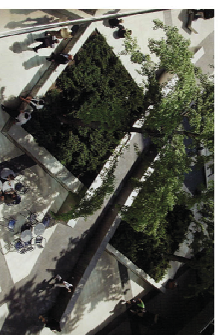
- Concrete sidewalk (3.0m min.) with saw-cut joint pattern.
- Basalt stone banding (4.5m) running perpendicular to roadway and building edges.
- Typical asphalt drive lanes.
- Concrete curb line paving in darker color delineating plaza crossings (basalt stone banding (4.5m also marking cycling zone at plaza location);
- Painted boulevards (1.5m wide) with street trees.
- Accent Basalt stone banding utilized in plaza.
- All streetscape design in accordance with City of Vancouver, Gamble Corridor – Public Realm Plan, May 1, 2018.



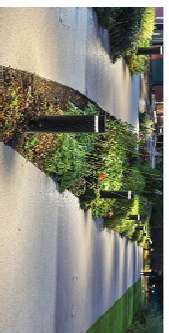
## WIDE SEATING STEPS



OUTDOOR SEATING



## PLAZA PLANTING



**LIGHTING FIXTURES -ILLUMINATED BOLLARDS, INGROUND LINEAR, TREE UPLIGHT**



## SITE FURNISHINGS

THIS PUBLIC REALM PLAN IS A 'SCHEMATIC DESIGN' PACKAGE ONLY, AND IS SUBJECT TO DESIGN DEVELOPMENT, AS REQUIRED FOR INDIVIDUAL DEVELOPMENT PERMIT DESIGN STAGES AND SUBMISSIONS.