

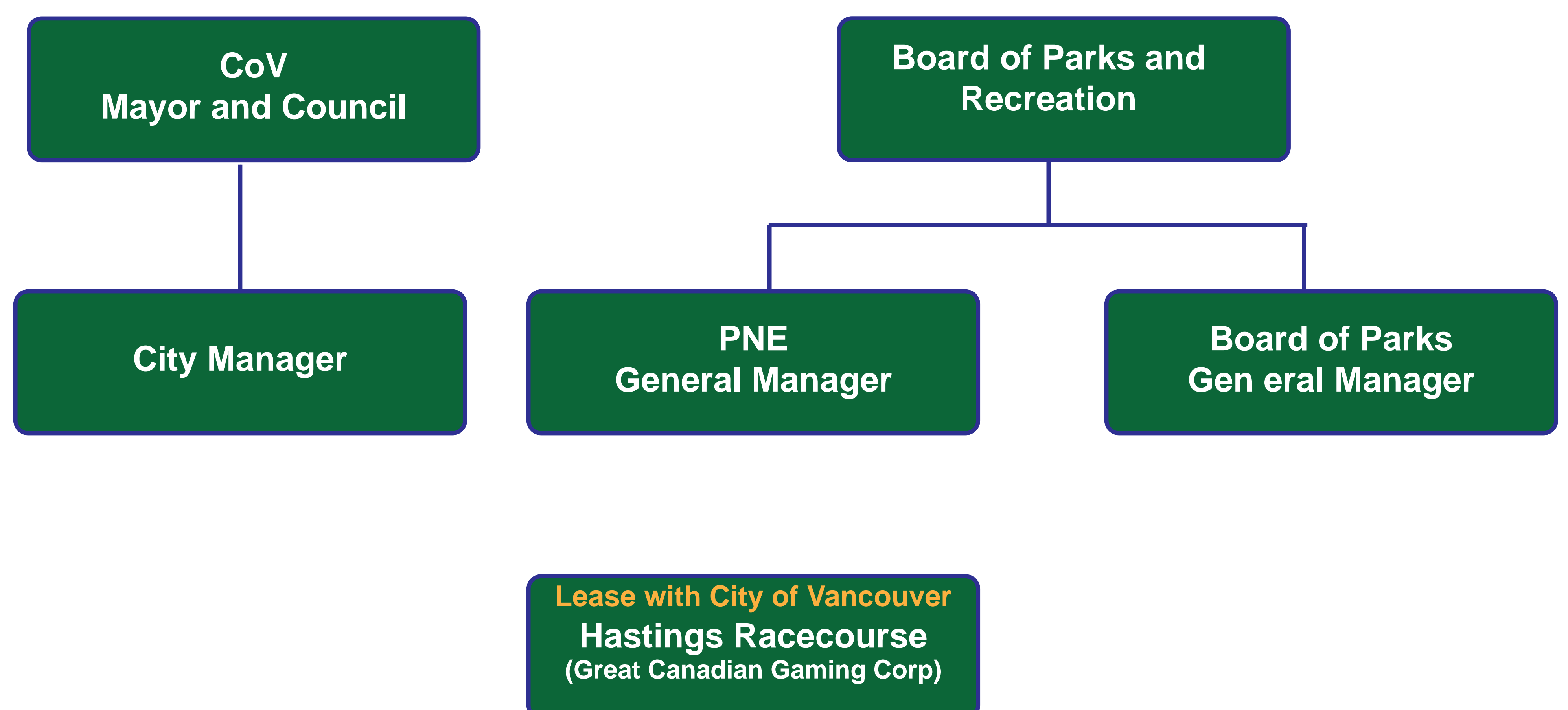
6 Option 2

Option 2 would see Hastings Park/PNE become a department of the Vancouver Board of Parks and Recreation.

Key Considerations:

- The Board of Parks and Recreation has delegated authority from Council to govern Hastings Park and the PNE
- The elected Board of Parks and Recreation is accountable for the implementation of the Master Plan
- Parks and Recreation is responsible for all open spaces, parkland and sport fields
- PNE is responsible for commercial activities
- PNE no longer qualifies for charitable status, potentially impacting fiscal sustainability
- Potential change of employer for some employees
- Opportunity for public input at Park Board meetings

Option 2



What do you think?

- *What do you think are the advantages and disadvantages of this potential option?*
- *What questions do you have about this option?*
- *Can you suggest ways to improve it?*

Please provide your input on Question 3 of your feedback form.