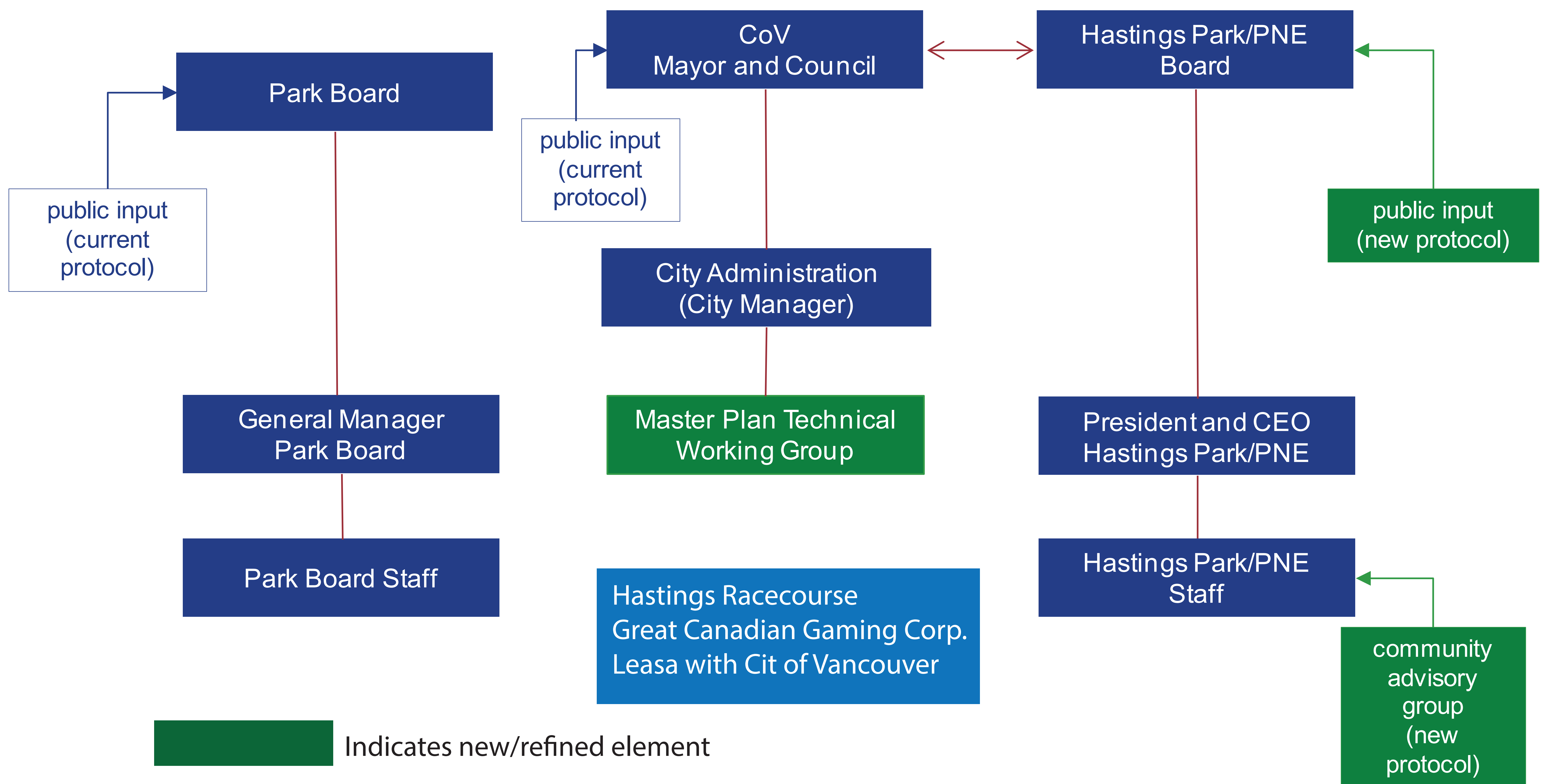


# 7 Proposed Hastings Park/PNE Structure



## Key Components of Proposed Hastings Park/PNE Structure

- City appoints skills based Board (9 to 11 members)
- Park Board manages Empire Fields
- Public input at Board meetings following new protocol
- Multi-Party Agreement with clearly defined roles and responsibilities:
  - City of Vancouver
  - Park Board
  - Hastings Park/PNE
- Community consultation on programming through staff liaison with community advisory group
- Master Plan Technical Working Group to provide an Interface between City Management, Park Board, and Hastings Park/PNE
- Aligns strongly with guiding principles

- ### Benefits of Skills Based Board
- Appointed for contributions directors can make
  - Expertise aligns with organization mandate
  - Diversified expertise and perspective
  - Provides credibility
  - Long term perspective
  - Director term not related to election cycle