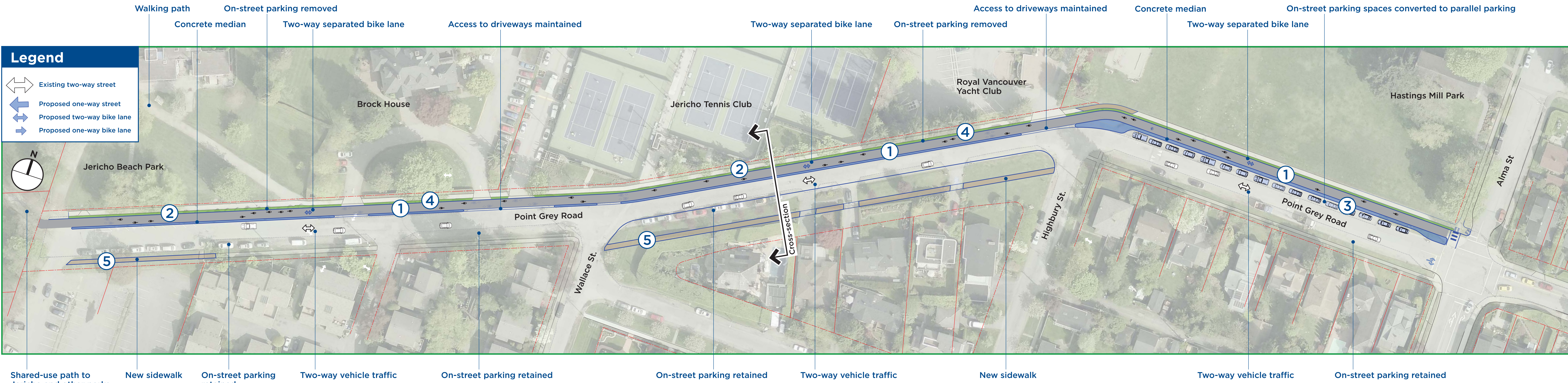
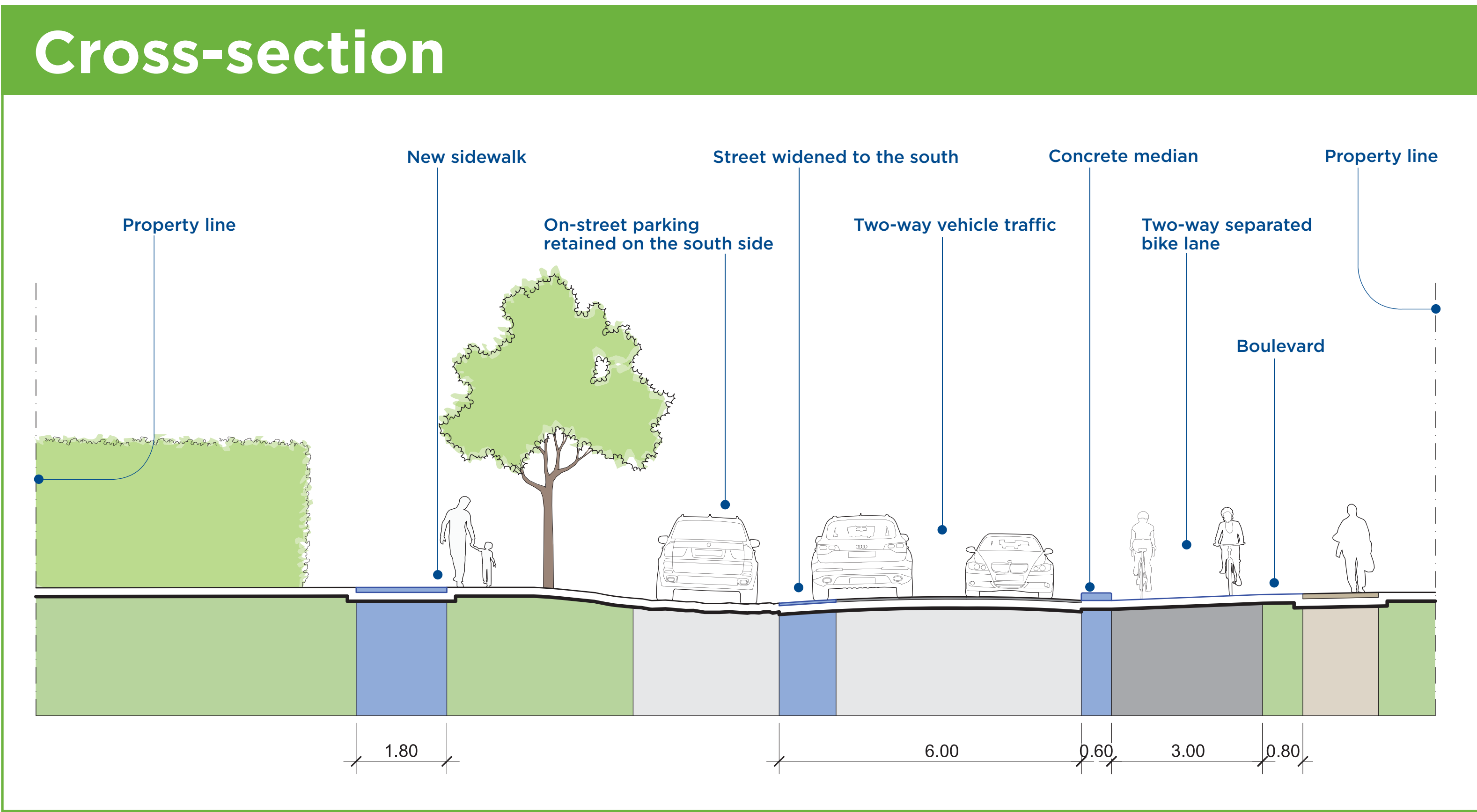
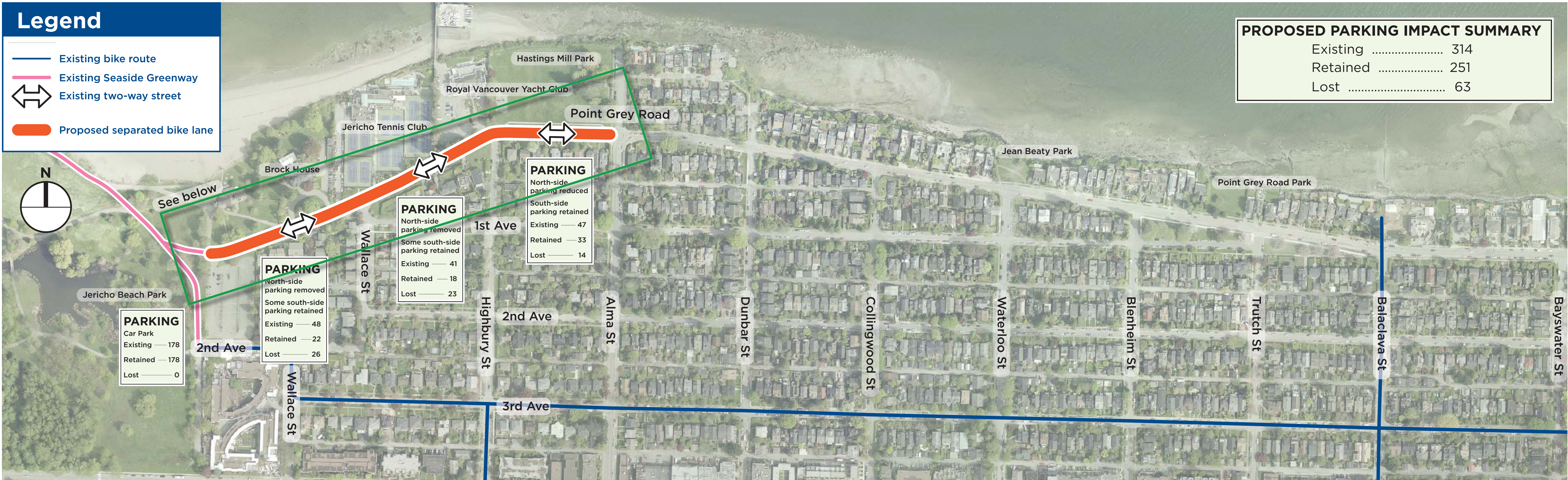


Point Grey Road - West of Alma

New sidewalks and separated two-way bike lanes



POINT GREY -
CORNWALL CORRIDOR



Key Features
<ul style="list-style-type: none"> New Sidewalks Two-way separated bike lanes Parking changes

What are we proposing?	Why?
① Two-way separated bike lane on the north side of the street	<ul style="list-style-type: none"> To provide a safe, convenient and comfortable cycling route for people of all ages and abilities To provide a buffer between pedestrians and vehicles
② On-street parking removed from the north side of the road between Jericho Beach Park and Highbury	<ul style="list-style-type: none"> To maintain two-way traffic and accommodate a two-way separated bike lane
③ Perpendicular parking on the north side of the road between Highbury and Alma changed to parallel parking	<ul style="list-style-type: none"> To maintain two-way traffic and accommodate a two-way separated bike lane

What are we proposing?	Why?
④ Boulevard widened on north side	<ul style="list-style-type: none"> To improve accessibility and comfort for pedestrians
⑤ New sidewalk constructed on the south side between Wallace and Highbury	<ul style="list-style-type: none"> To improve accessibility and comfort for pedestrians