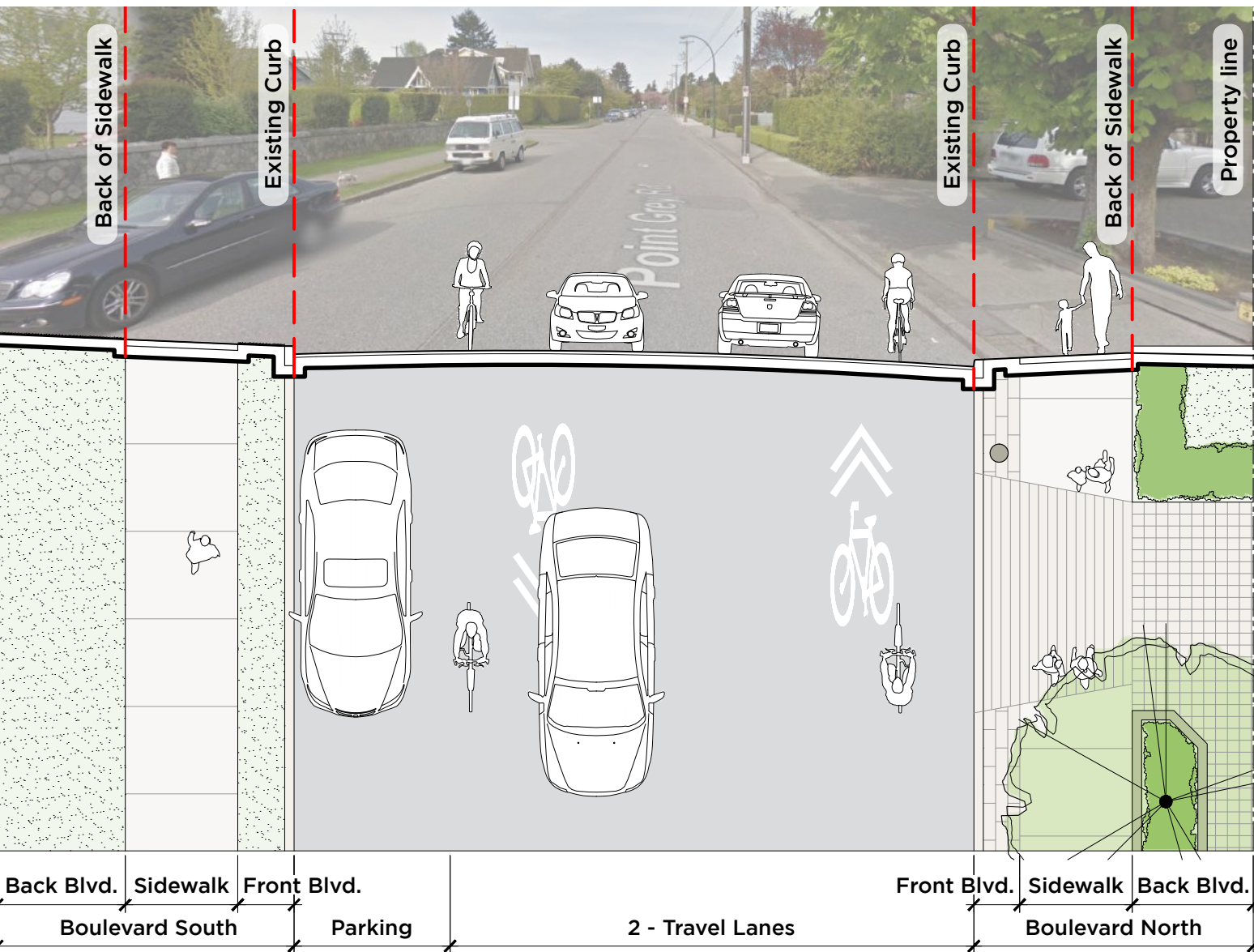
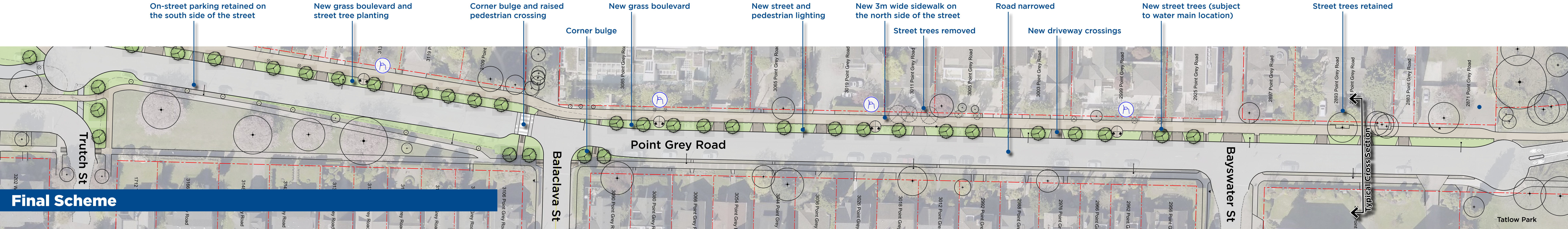
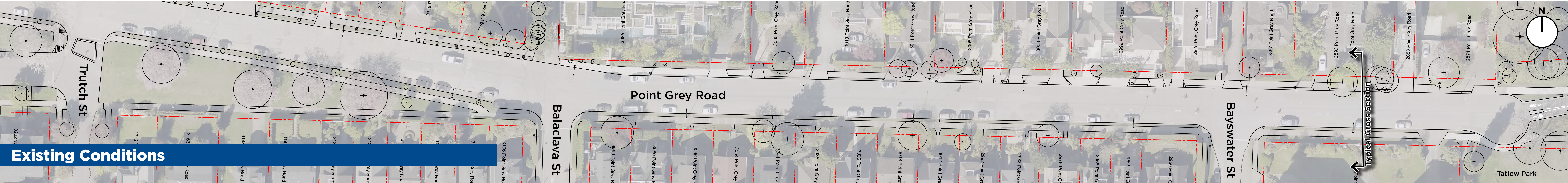


East: Balaclava to Tatlow Park



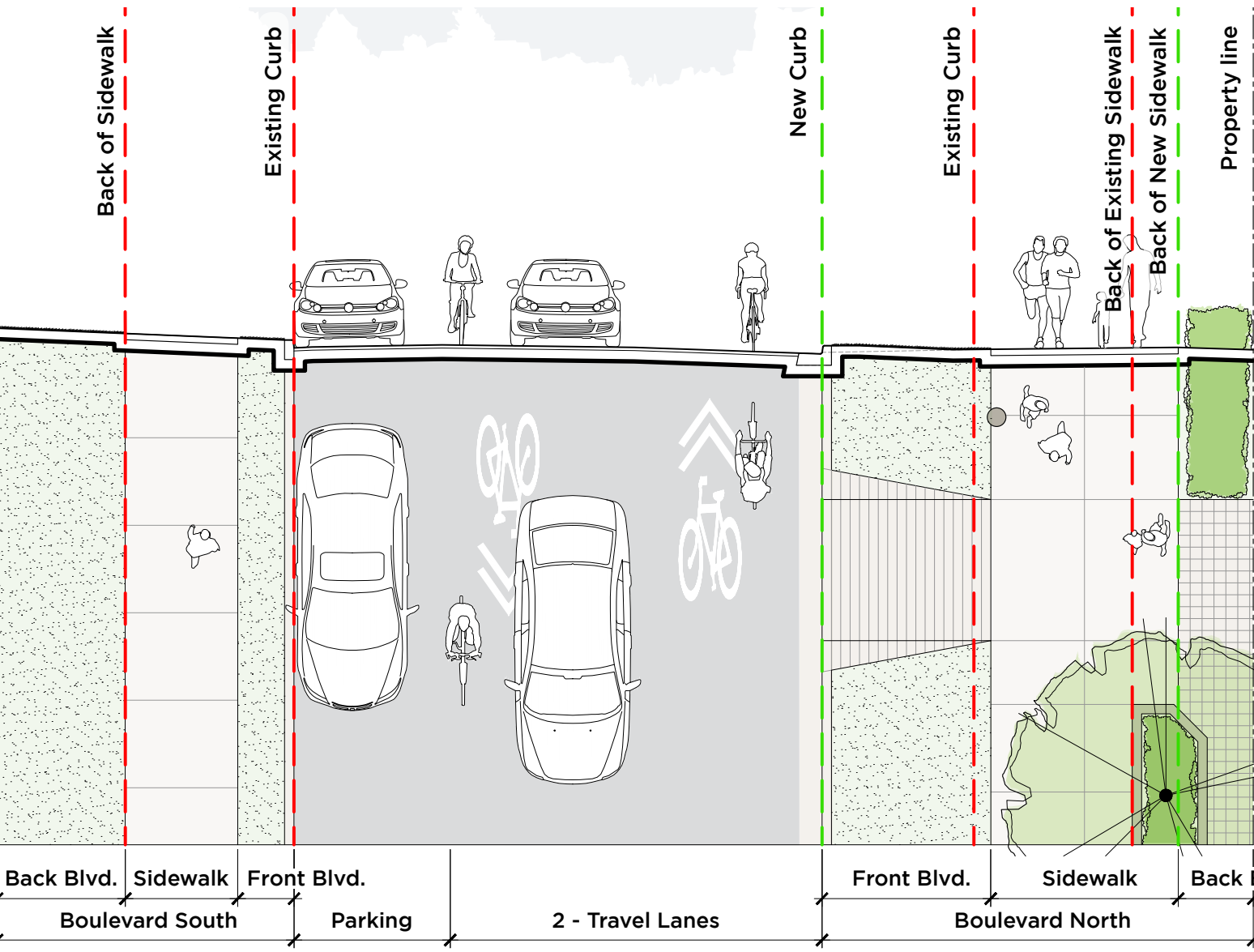
Existing Conditions

Typical Cross Section

4.8m boulevard south side of Point Grey Road.
2.0m back boulevard, 1.8m sidewalk,
1.0m front boulevard
11.0m roadway (curb to curb)
2.5m on-street parking, 2 x 3.0m travel lanes, 2.5m
on-street parking
4.3m boulevard north side of Point Grey Road
0.6m utility strip/boulevard, 1.8m sidewalk, 1.9m
back boulevard

Legend

- Existing tree retained
- Existing tree removed
- New tree
- Seating
- Drinking fountain
- Bicycle parking



Final Scheme

Typical Cross Section

4.8m boulevard south side of Point Grey Road.
2.0m back boulevard, 1.8m sidewalk,
1.0m front boulevard
8.5m curb to curb
2.5m on-street parking, 2 x 3.0m travel lanes
2.5m on-street parking
6.8m boulevard north
2.7m front boulevard, 3.0m sidewalk, 1.2m back
boulevard

Changes

Identified widths represent a typical design and variations may occur for different segments on Point Grey Road.



What is different?

Widened sidewalk on the north side of the street

Maintain a level sidewalk across driveways

Road narrowed between Balaclava and Tatlow Park

Front boulevard on the north side of the street widened

Some existing trees and hedges removed from the street right of way

New street and pedestrian lighting

New driveway crossings

New street tree planting

Corner bulges at Waterloo St and Balaclava St in association with raised pedestrian crossings

Why?

- To provide additional space for people walking and running with connections to waterfront parks
- To bring sidewalk width in line with other sections of the Seaside Greenway
- To improve the walking and running surface for people of all ages and abilities
- To widen the sidewalk while maintaining two travel lanes and south side on-street parking
- To provide a more comfortable pedestrian experience by creating separation between vehicles and pedestrians and improved visibility for all road users
- To accommodate the widened sidewalk and to improve visibility for all road users
- To provide lighting levels to current standards and improve visibility for all road users
- To provide access for residents while maintaining a level sidewalk
- To replace existing trees that need to be removed and to enhance the public realm
- To improve pedestrian crossings and reduce vehicle speeds