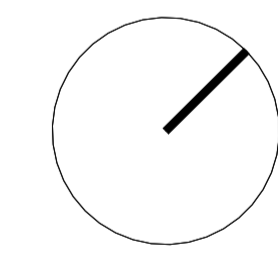


Issued

No.	Date	Description
1	June 03, 2024	Issued for 100% SD
2	Sept 03, 2024	Issued for DP Enquiry
3	Nov. 14, 2024	Issued for RZ Text Amendment
5	Dec. 10, 2024	Issued for DP Application
6	Jan. 24, 2025	Issued for 100% DD
7	Aug. 21, 2025	Issued for RZ Text Amendment
9	Oct. 24, 2025	Issued for DP Application

**NOT FOR
 CONSTRUCTION**



Contractor Must Check & Verify all Dimensions on the Job.
 Do Not Scale Drawings.
 All Drawings, Specifications and Related Documents are the Copyright Property of the Architect and Must be Returned Upon Request. Reproduction of Drawings, Specifications and Related Documents in Part or in Whole is Forbidden Without the Written permission of the Architect.
 This Drawing is Not to be Used for Construction Until Signed by the Architect.

**Granville Loops
 Social Housing**
 1395 Rolston Street, Vancouver, BC
 231046

Context Plan & Site Info
 1:500

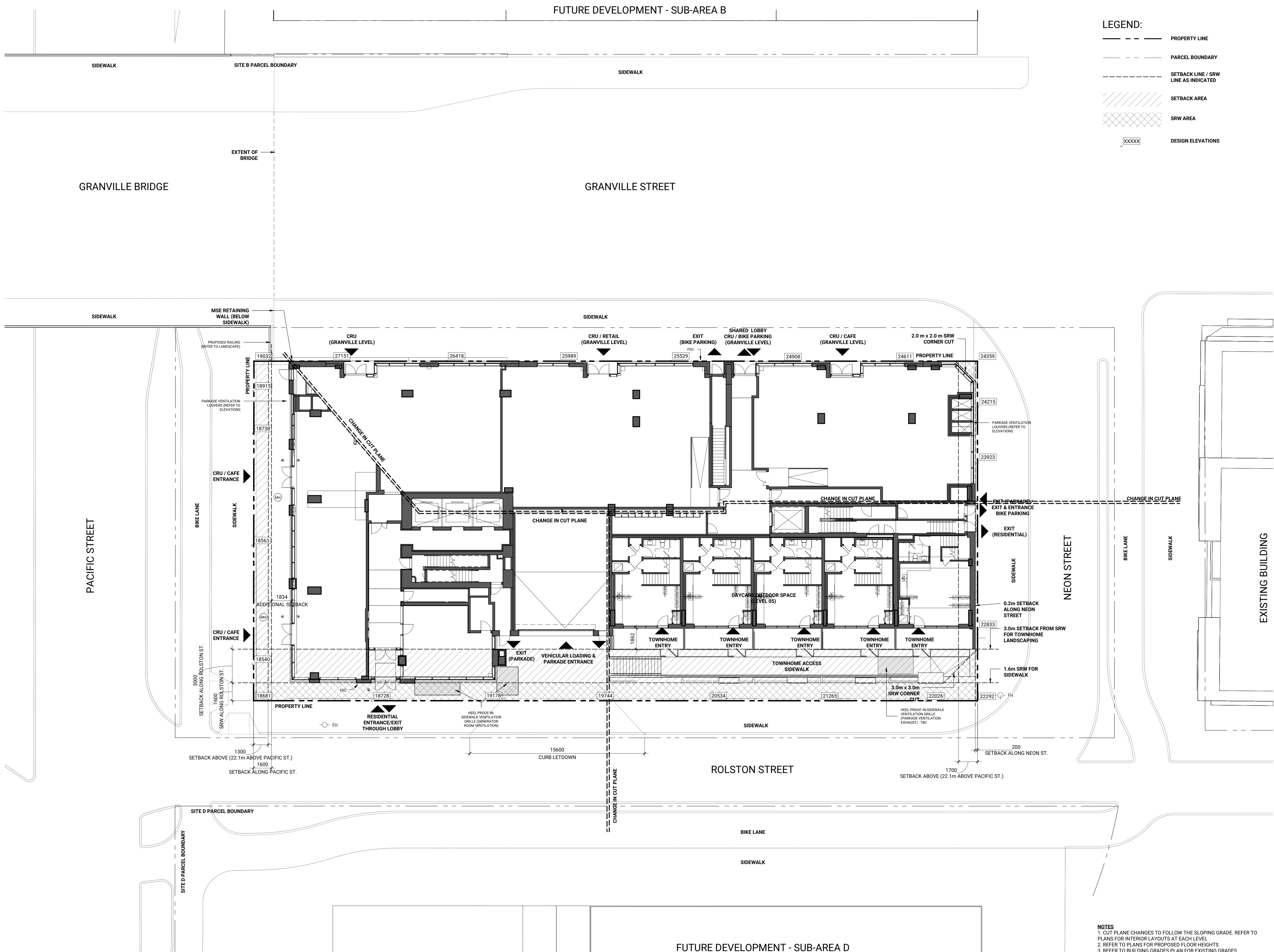
DP010

Autodesk Docx: /7231046-Granville Loops-R24/231046-ARCH-DSA-Building-R24.rvt
 2025-10-24 5:40:59 PM



LEGEND:

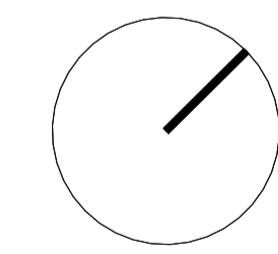
	PROPERTY LINE
	PARCEL BOUNDARY
	SETBACK LINE / SRW LINE AS INDICATED
	SETBACK AREA
	SRW AREA
	DESIGN ELEVATIONS



Issued

No.	Date	Description
1	June 03, 2024	Issued for 100% SD
2	Sept 03, 2024	Issued for DP Enquiry
3	Nov. 14, 2024	Issued for RZ Text Amendment
5	Dec. 10, 2024	Issued for DP Application
6	Jan. 24, 2025	Issued for 100% DD
7	Aug. 21, 2025	Issued for RZ Text Amendment
9	Oct. 24, 2025	Issued for DP Application

**NOT FOR
 CONSTRUCTION**



Contractor Must Check & Verify all Dimensions on the Job.
 Do Not Scale Drawings.
 All Drawings, Specifications and Related Documents are the Copyright Property of the Architect and Must be Returned Upon Request. Reproduction of Drawings, Specifications and Related Documents in Part or in Whole is Forbidden Without the Written permission of the Architect.
 This Drawing is Not to be Used for Construction Until Signed by the Architect.

**Granville Loops
 Social Housing**
 625/717 Pacific Street, Vancouver, BC
 231046

- NOTES**
- CUT PLANE CHANGES TO FOLLOW THE SLOPE GRADE. REFER TO PLANS FOR INTERIOR LAYOUTS AT EACH LEVEL.
 - REFER TO PLANS FOR PROPOSED FLOOR HEIGHTS.
 - REFER TO BUILDING GRADES PLAN FOR EXISTING GRADES.
 - LOCATION OF DESIGN ELEVATIONS POINTS IN THIS PLAN MATCH THE LOCATIONS OF CITY-ISSUED BUILDING GRADES ON THE BUILDING GRADES PLAN.

Site Plan (At Grade)
 1:150

DP011

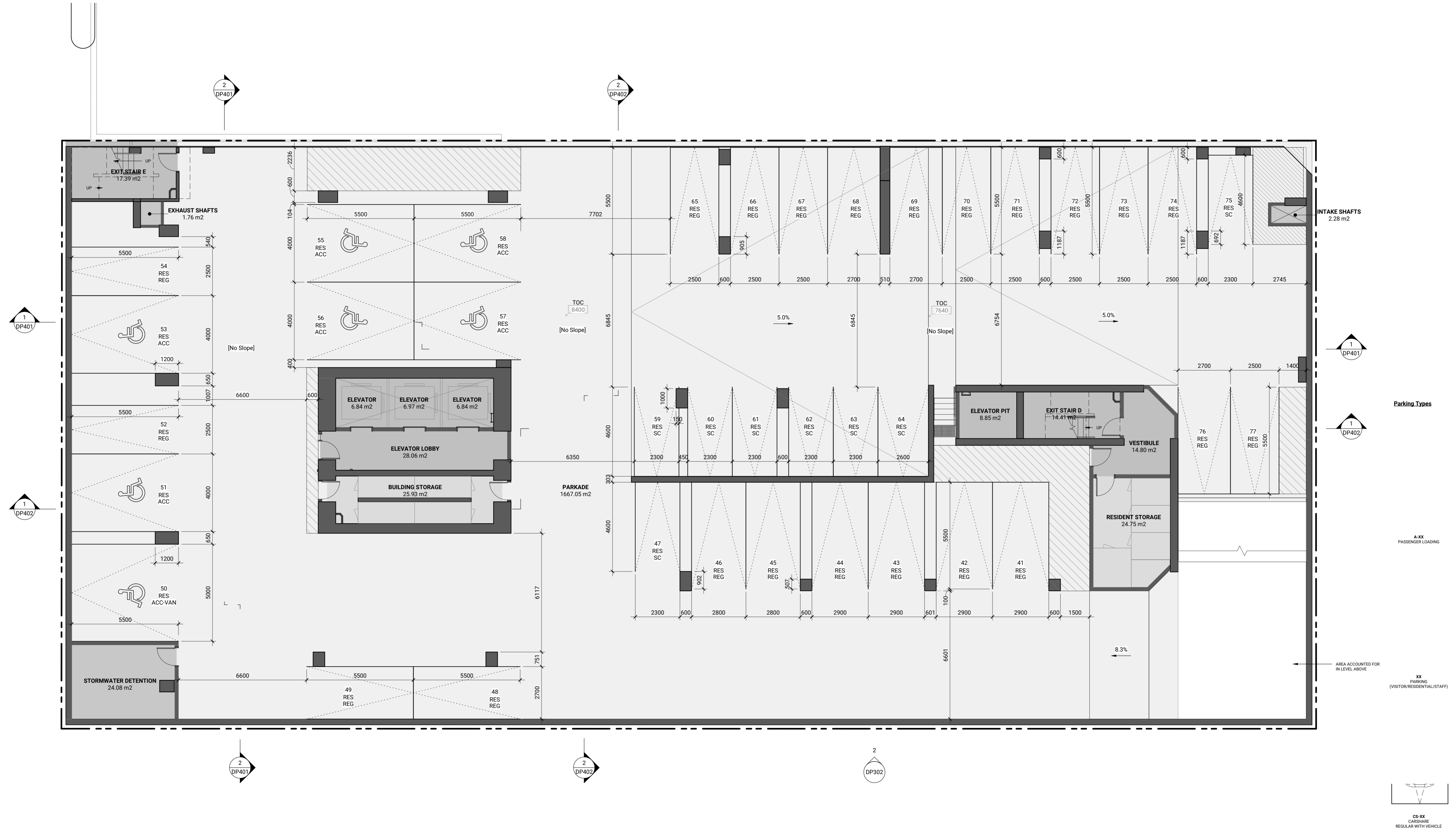
Autodesk Docx: /231046-Granville Loops R24/231046-ARCH-DSSA-Building R24.rvt

2025-10-24 5:41:08 PM



Issued

No.	Date	Description
1	June 03, 2024	Issued for 100% SD
2	Sept 03, 2024	Issued for DP Enquiry
3	Nov. 14, 2024	Issued for RZ Text Amendment
5	Dec. 10, 2024	Issued for DP Application
6	Jan. 24, 2025	Issued for 100% DD
7	Aug. 21, 2025	Issued for RZ Text Amendment
9	Oct. 24, 2025	Issued for DP Application



**NOT FOR
 CONSTRUCTION**

Parking Types

A-XX
 PASSENGER LOADING

XX
 PARKING
 (VISITOR/RESIDENTIAL/STAFF)

CS-XX
 CARSHARE
 REGULAR WITH VEHICLE

Contractor Must Check & Verify all Dimensions on the Job.
 Do Not Scale Drawings.
 All Drawings, Specifications and Related Documents are the Copyright Property of the Architect and Must be Returned Upon Request. Reproduction of Drawings, Specifications and Related Documents in Part or in Whole is Forbidden Without the Written permission of the Architect.
 This Drawing is Not to be Used for Construction Until Signed by the Architect.

**Granville Loops
 Social Housing**
 1395 Rolston Street, Vancouver, BC
 231046

P3 Floor Plan
 1:100
DP101

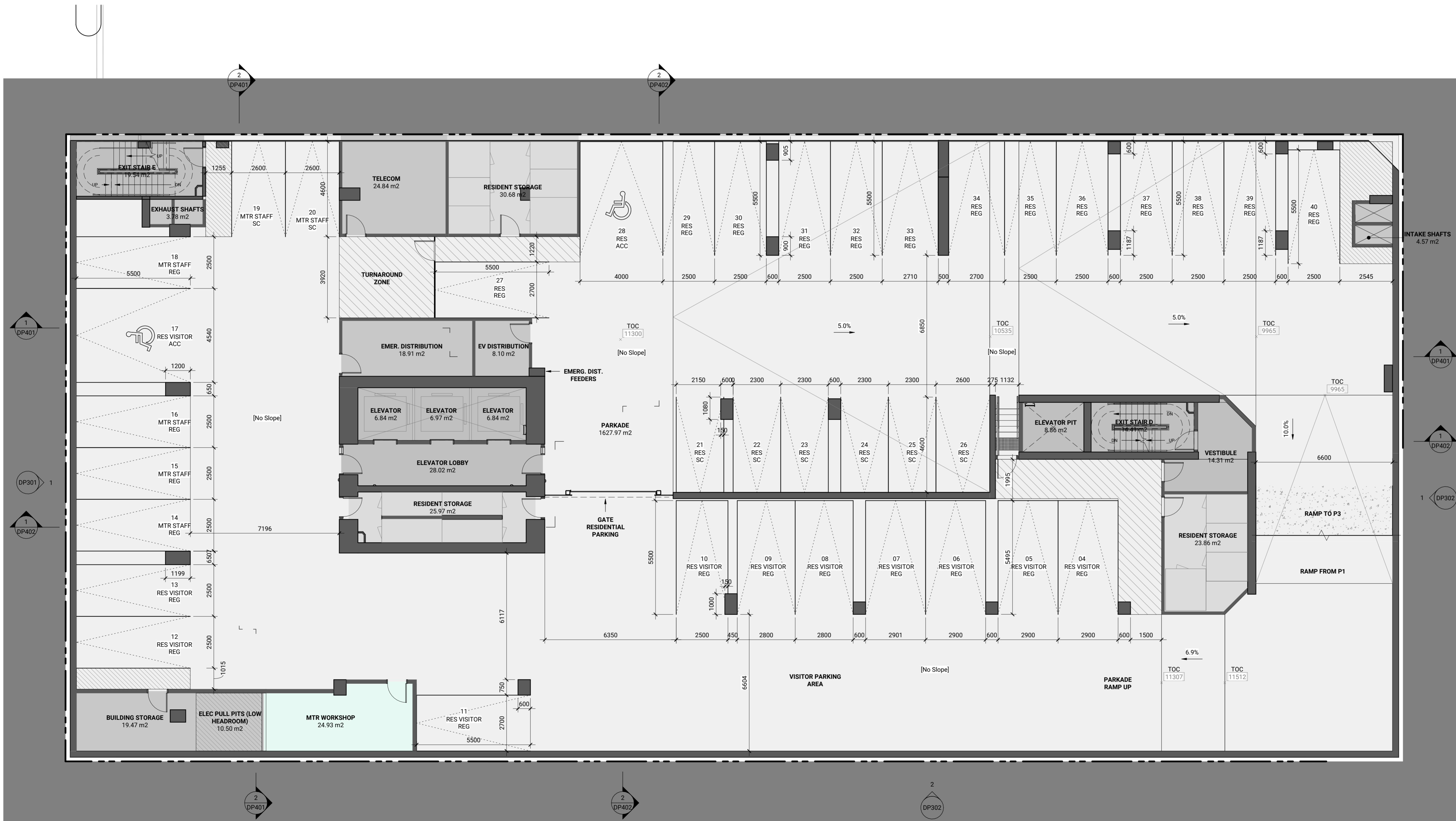
Autodesk Docx: /731046-Granville Loops-R24/231046-ARCH-DSA-Building-R24.rvt

2025-10-24 8:41:10 PM

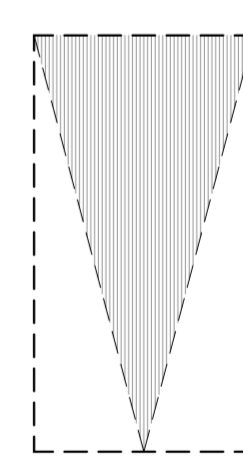


Issued

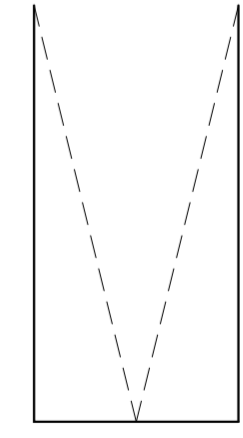
No.	Date	Description
1	June 03, 2024	Issued for 100% SD
2	Sept 03, 2024	Issued for DP Enquiry
3	Nov. 14, 2024	Issued for RZ Text Amendment
5	Dec. 10, 2024	Issued for DP Application
6	Jan. 24, 2025	Issued for 100% DD
7	Aug. 21, 2025	Issued for RZ Text Amendment
9	Oct. 24, 2025	Issued for DP Application



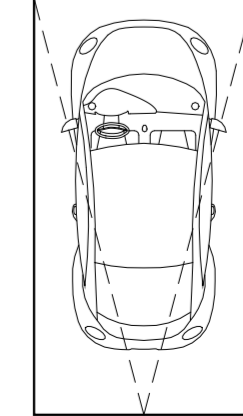
Parking Types



A-XX PASSENGER LOADING

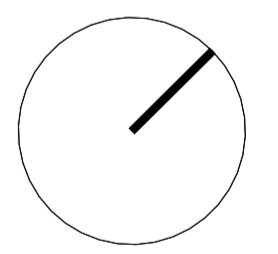


XX PARKING (VISITOR/RESIDENTIAL/STAFF)



CS-XX CARSHARE REGULAR WITH VEHICLE

NOT FOR CONSTRUCTION



Contractor Must Check & Verify all Dimensions on the Job.
 Do Not Scale Drawings.
 All Drawings, Specifications and Related Documents are the Copyright Property of the Architect and Must be Returned Upon Request. Reproduction of Drawings, Specifications and Related Documents in Part or in Whole is Forbidden Without the Written permission of the Architect.
 This Drawing is Not to be Used for Construction Until Signed by the Architect.

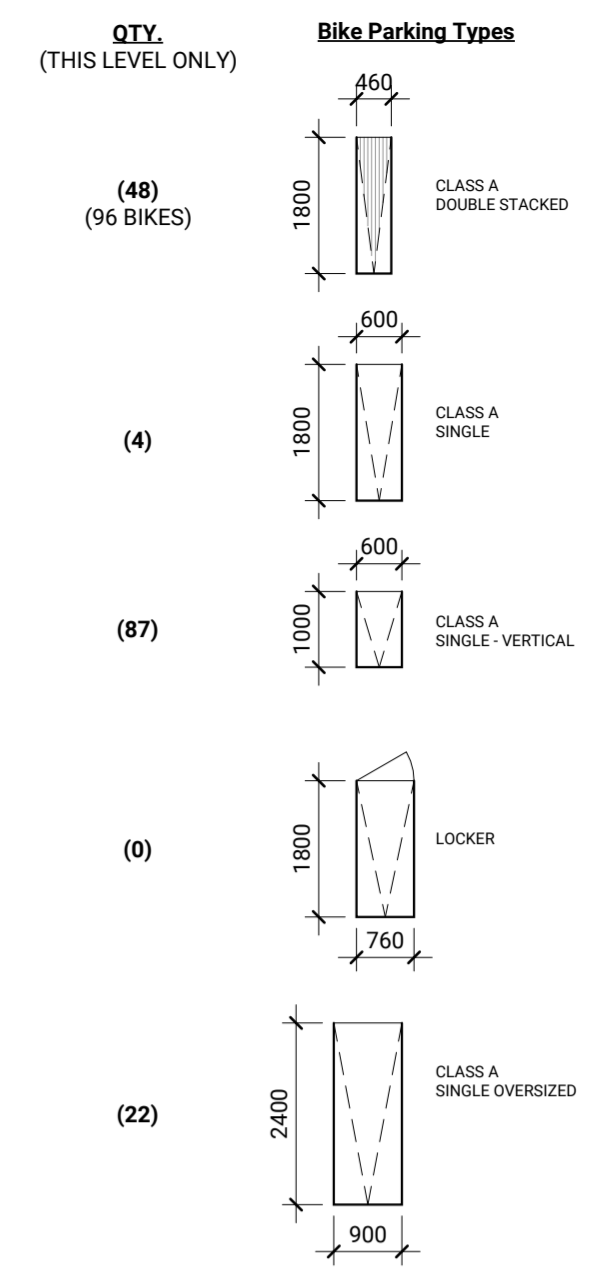
**Granville Loops
 Social Housing**
 1395 Rolston Street, Vancouver, BC
 231046

P2 Floor Plan
 1:100

DP102

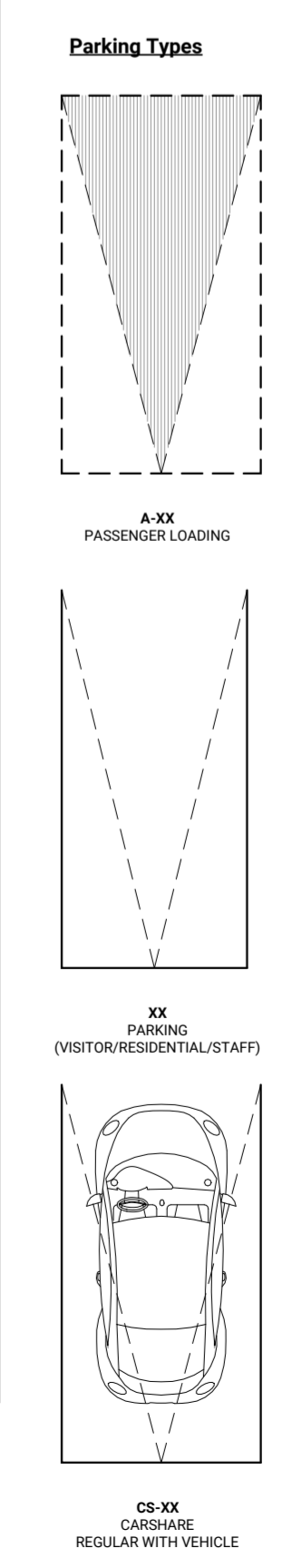
Autodesk DocSet: /731046-Granville Loops/R24/231046-ARCH-DSA-Building-R24.rvt

2025-10-24 8:41:12 PM



Issued

No.	Date	Description
1	June 03, 2024	Issued for 100% SD
2	Sept 03, 2024	Issued for DP Enquiry
3	Nov. 14, 2024	Issued for RZ Text Amendment
5	Dec. 10, 2024	Issued for DP Application
6	Jan. 24, 2025	Issued for 100% DD
7	Aug. 21, 2025	Issued for RZ Text Amendment
9	Oct. 24, 2025	Issued for DP Application



NOT FOR CONSTRUCTION

Contractor Must Check & Verify all Dimensions on the Job.
 Do Not Scale Drawings.
 All Drawings, Specifications and Related Documents are the Copyright Property of the Architect and Must be Returned Upon Request. Reproduction of Drawings, Specifications and Related Documents in Part or in Whole is Forbidden Without the Written permission of the Architect.
 This Drawing is Not to be Used for Construction Until Signed by the Architect.

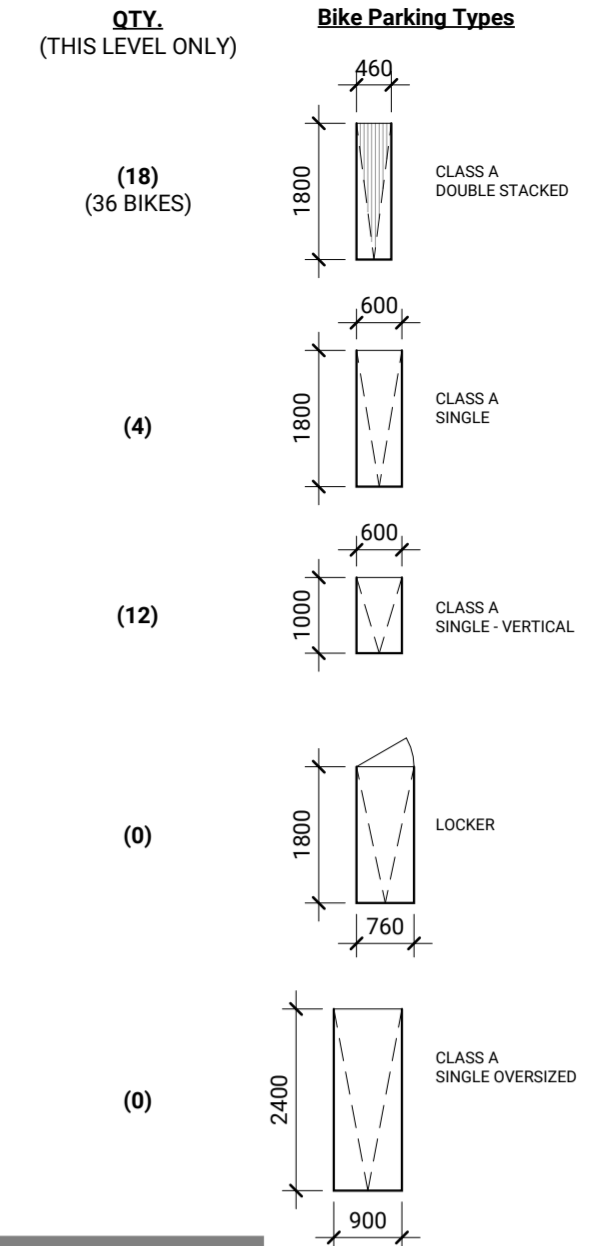
**Granville Loops
 Social Housing**
 1395 Rolston Street, Vancouver, BC
 231046

Autodesk Docx: /231046-Granville Loops R24/231046-ARCH-DSA-Building R24.rvt

2025-10-24 5:41:22 PM

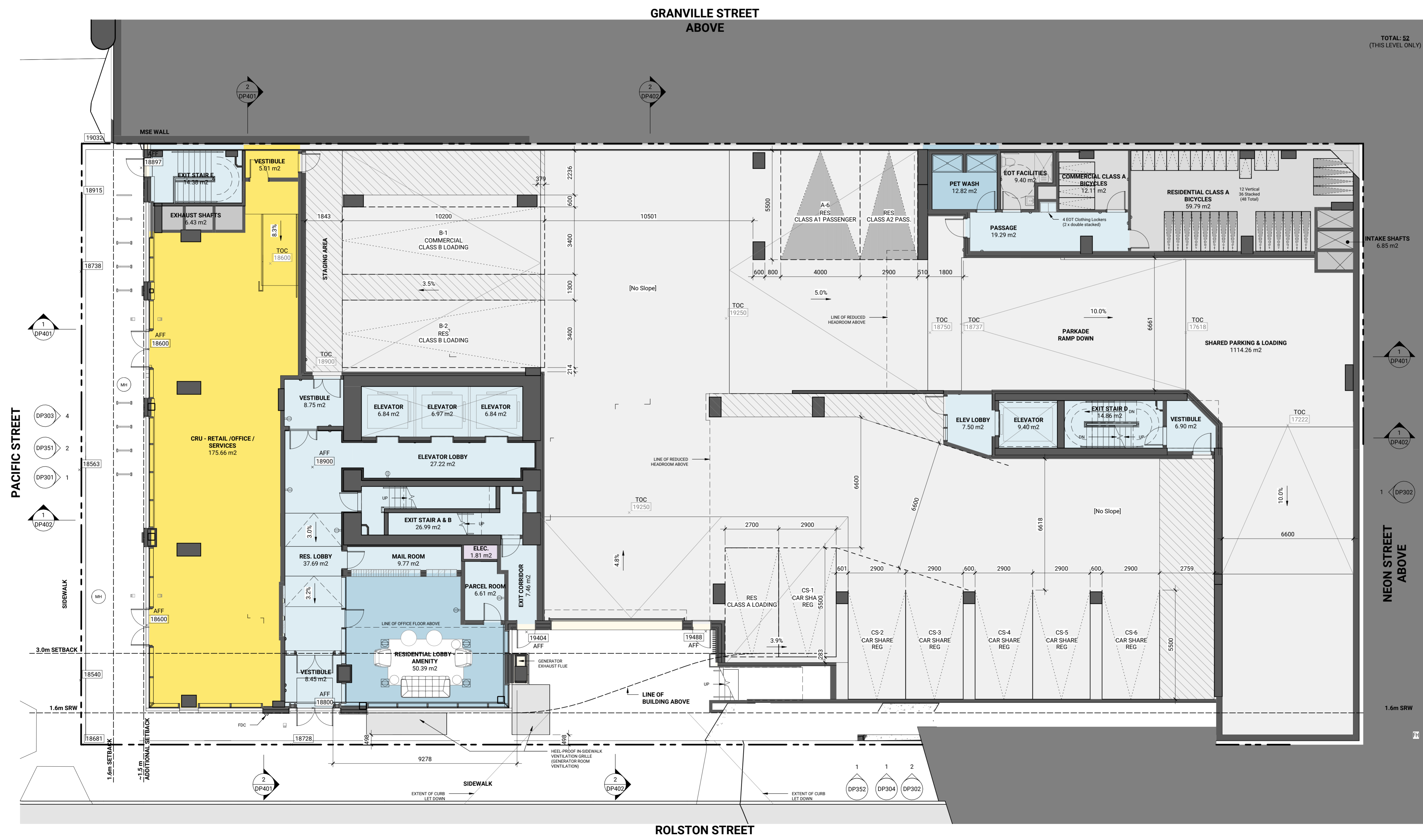


LEGEND:
 - - - - - PROPERTY LINE
 - - - - - PARCEL BOUNDARY
 - - - - - SETBACK LINE
 AFF
 XXXXX
**DESIGN ELEVATIONS
 (ABOVE FINISHED FLOOR)**

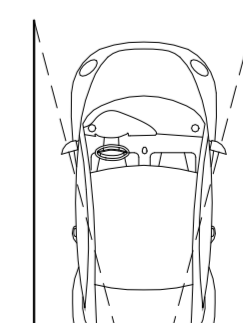
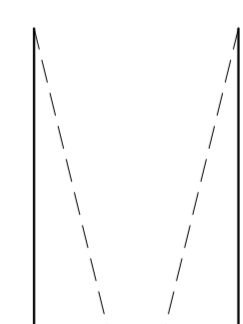
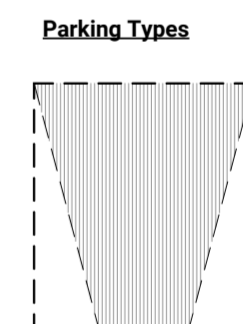


Issued

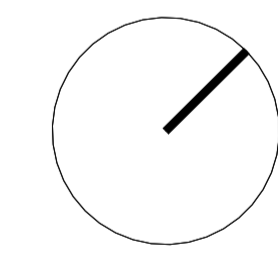
No.	Date	Description
1	June 03, 2024	Issued for 100% SD
2	Sept 03, 2024	Issued for DP Enquiry
3	Nov. 14, 2024	Issued for RZ Text Amendment
5	Dec. 10, 2024	Issued for DP Application
6	Jan. 24, 2025	Issued for 100% DD
7	Aug. 21, 2025	Issued for RZ Text Amendment
9	Oct. 24, 2025	Issued for DP Application



NEON STREET ABOVE



NOT FOR CONSTRUCTION



Contractor Must Check & Verify all Dimensions on the Job.
 Do Not Scale Drawings.
 All Drawings, Specifications and Related Documents are the Copyright Property of the Architect and Must be Returned Upon Request. Reproduction of Drawings, Specifications and Related Documents in Part or in Whole is Forbidden Without the Written permission of the Architect.
 This Drawing is Not to be Used for Construction Until Signed by the Architect.

**Granville Loops
 Social Housing**
 1395 Rolston Street, Vancouver, BC
 231046

Level 01 Floor Plan
 As indicated
DP104

Autodesk Docx: /7231046-Granville Loops R24/231046-ARCH-DSA-Building R24.rvt
 2025-10-24 8:41:31 PM



LEGEND:

- PROPERTY LINE
- - - PARCEL BOUNDARY
- - - SETBACK LINE
- AFF XXXXX DESIGN ELEVATIONS (ABOVE FINISHED FLOOR)

Bike Parking Types

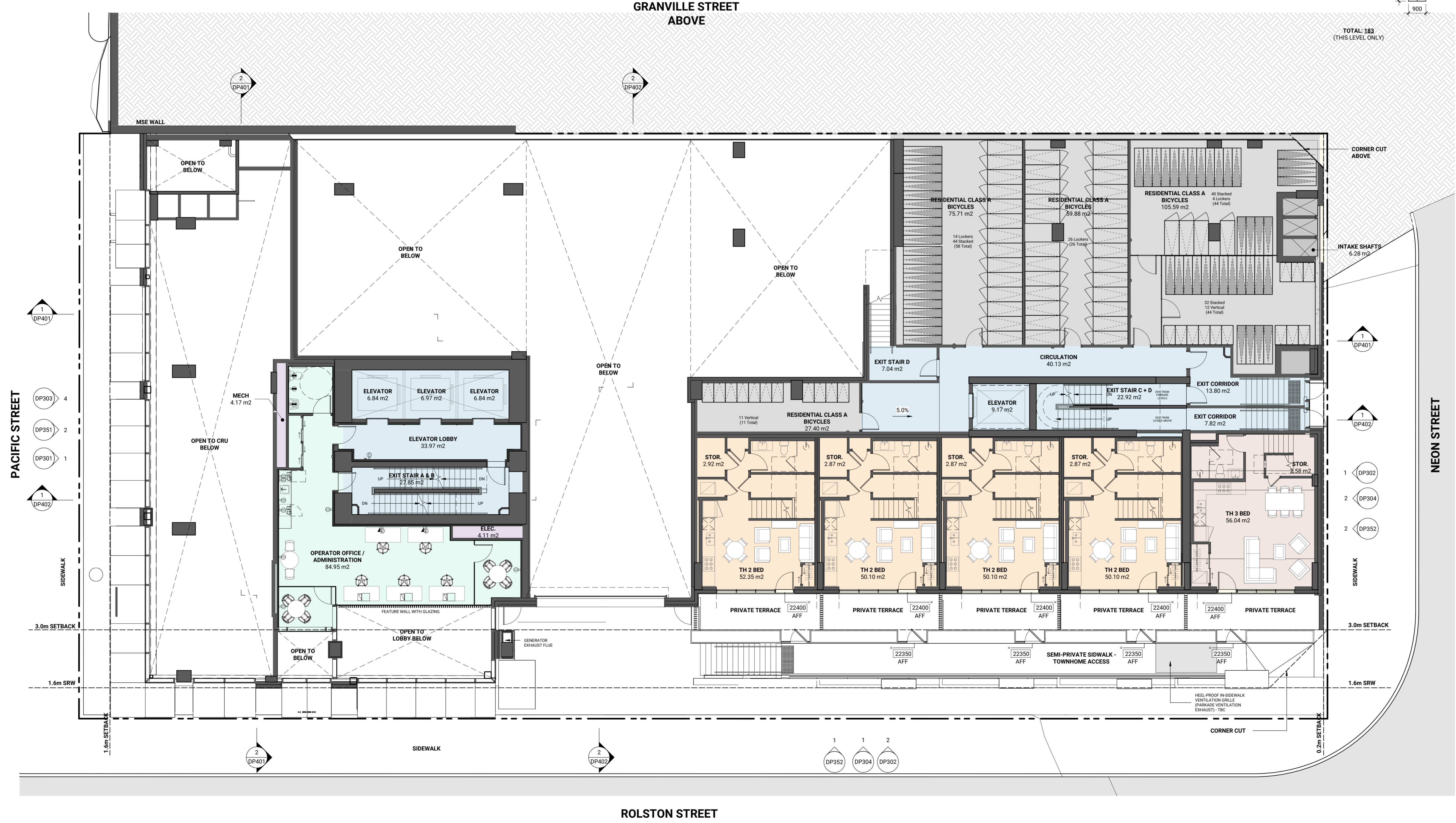
QTY. (THIS LEVEL ONLY)	Diagram	Description
(58) (116 BIKES)		CLASS A DOUBLE STACKED
(0)		CLASS A SINGLE
(23)		CLASS A SINGLE-VERTICAL
(44)		LOCKER
(0)		CLASS A OVERSIZED

TOTAL: 183 (THIS LEVEL ONLY)

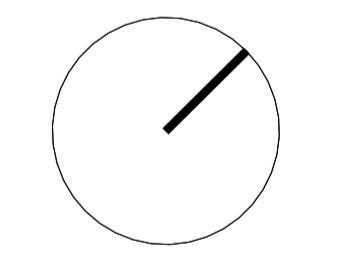
Note
 1. Exterior wall areas are included in area calculations for zoning purposes. Exterior walls are used only to demonstrate unit areas in accordance with the BC Housing Design Guidelines, which exclude area beyond the line of sheathing.
 Floor area exclusions for improved building performance are not being sought for this project.
 2. Unit areas shown on plans include in-suite bulk storage. Compliant bulk storage up to 3.7 m² is excluded from FSR totals in the project statistics.

Issued

No.	Date	Description
1	June 03, 2024	Issued for 100% SD
2	Sept 03, 2024	Issued for DP Enquiry
3	Nov. 14, 2024	Issued for RZ Text Amendment
5	Dec. 10, 2024	Issued for DP Application
6	Jan. 24, 2025	Issued for 100% BD
7	Aug. 21, 2025	Issued for RZ Text Amendment
9	Oct. 24, 2025	Issued for DP Application



NOT FOR CONSTRUCTION



Contractor Must Check & Verify all Dimensions on the Job.
 Do Not Scale Drawings.
 All Drawings, Specifications and Related Documents are the Copyright Property of the Architect and Must be Returned Upon Request. Reproduction of Drawings, Specifications and Related Documents in Part or in Whole is Forbidden Without the Written permission of the Architect.
 This Drawing is Not to be Used for Construction Until Signed by the Architect.

**Granville Loops
 Social Housing**
 1395 Rolston Street, Vancouver, BC
 231046

Level 02 Floor Plan
 As indicated

DP105

Autodesk Docx: /7231046-Granville Loops R24/231046-ARCH-DCSA-Building R24.rvt

2025-10-24 5:41:41 PM



LEGEND:
 - - - - - PROPERTY LINE
 - - - - - PARCEL BOUNDARY
 - - - - - SETBACK LINE
 AFF
 XXXXX
 DESIGN ELEVATIONS
 (ABOVE FINISHED FLOOR)

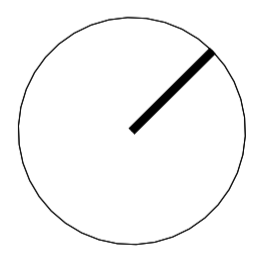
Note
 1. Exterior wall areas are included in area calculations for zoning purposes. Exterior walls are used only to demonstrate unit areas in accordance with the BC Housing Design Guidelines, which exclude area beyond the line of sheathing.
 Floor area exclusions for improved building performance are not being sought for this project.
 2. Unit areas shown on plans include in-suite bulk storage. Compliant bulk storage up to 3.7 m² is excluded from FSR totals in the project statistics.



Issued

No.	Date	Description
1	June 03, 2024	Issued for 100% SD
2	Sept 03, 2024	Issued for DP Enquiry
3	Nov. 14, 2024	Issued for RZ Text Amendment
5	Dec. 10, 2024	Issued for DP Application
6	Jan. 24, 2025	Issued for 100% DD
7	Aug. 21, 2025	Issued for RZ Text Amendment
9	Oct. 24, 2025	Issued for DP Application

**NOT FOR
 CONSTRUCTION**



Contractor Must Check & Verify all Dimensions on the Job.
 Do Not Scale Drawings.
 All Drawings, Specifications and Related Documents are the Copyright Property of the Architect and Must be Returned Upon Request. Reproduction of Drawings, Specifications and Related Documents in Part or in Whole is Forbidden Without the Written permission of the Architect.
 This Drawing is Not to be Used for Construction Until Signed by the Architect.

**Granville Loops
 Social Housing**
 1395 Rolston Street, Vancouver, BC
 231046

Level 03 Floor Plan
 As indicated
DP106

Autodesk Docx: /7231046-Granville Loops R24/231046-ARCH-DSEA-Building R24.rvt

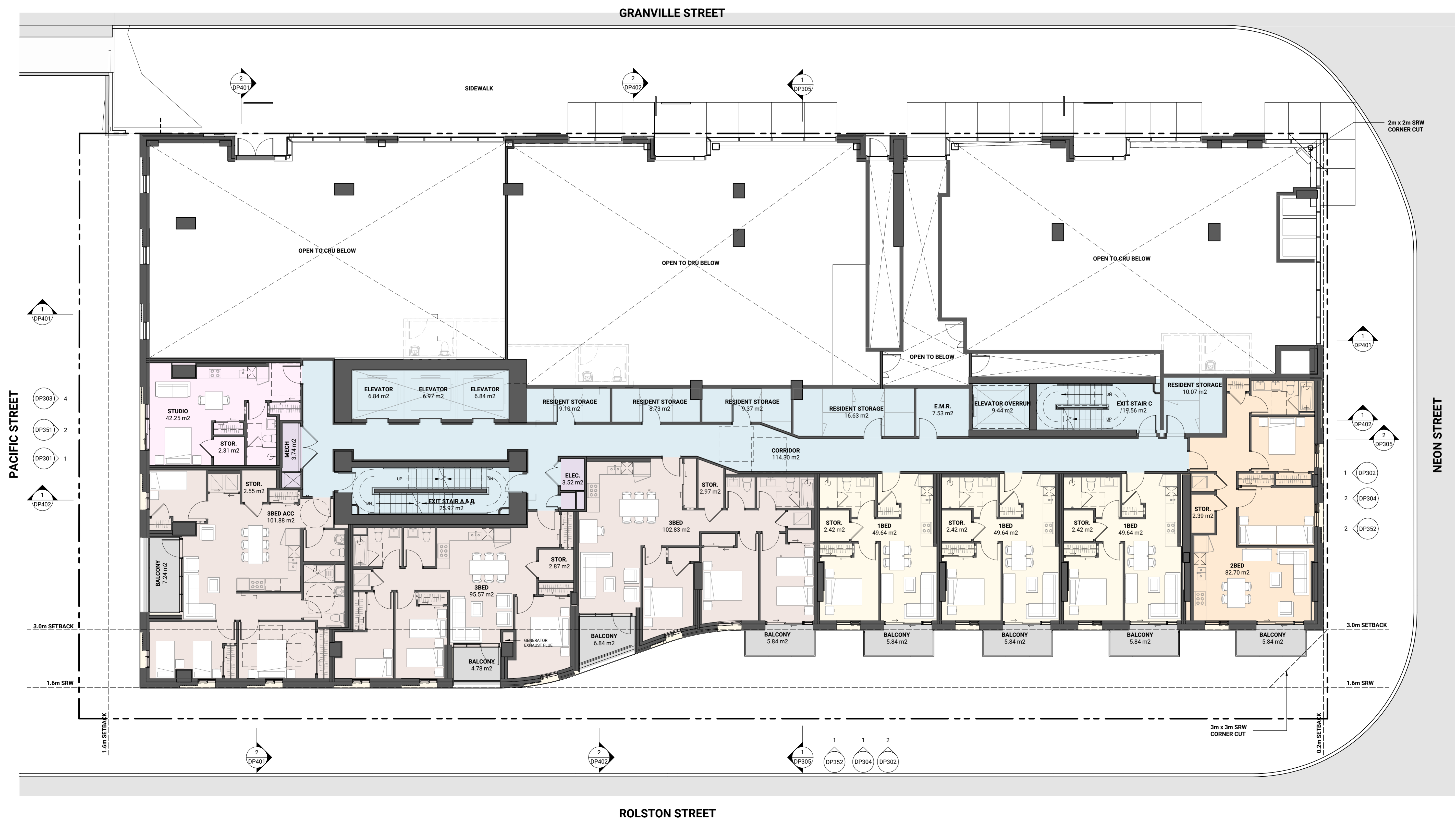
2025-10-24 5:41:56 PM



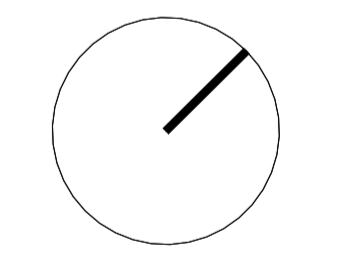
Note
 1. Exterior wall areas are included in area calculations for zoning purposes. Exterior walls are used only to demonstrate unit areas in accordance with the BC Housing Design Guidelines, which exclude area beyond the line of sheathing.
 Floor area exclusions for improved building performance are not being sought for this project.
 2. Unit areas shown on plans include in-suite bulk storage. Compliant bulk storage up to 3.7 m² is excluded from FSR totals in the project statistics.

Issued

No.	Date	Description
1	June 03, 2024	Issued for 100% SD
2	Sept 03, 2024	Issued for DP Enquiry
3	Nov. 14, 2024	Issued for RZ Text Amendment
5	Dec. 10, 2024	Issued for DP Application
6	Jan. 24, 2025	Issued for 100% DD
7	Aug. 21, 2025	Issued for RZ Text Amendment
9	Oct. 24, 2025	Issued for DP Application



**NOT FOR
 CONSTRUCTION**



Contractor Must Check & Verify all Dimensions on the Job.
 Do Not Scale Drawings.
 All Drawings, Specifications and Related Documents are the Copyright Property of the Architect and Must be Returned Upon Request. Reproduction of Drawings, Specifications and Related Documents in Part or in Whole is Forbidden Without the Written permission of the Architect.
 This Drawing is Not to be Used for Construction Until Signed by the Architect.

**Granville Loops
 Social Housing**
 1395 Rolston Street, Vancouver, BC
 231046

Autodesk Docu: //231046-Granville Loops R24/231046-ARCH-DCSA-Building R24.rvt 2025-10-24 4:42:07 PM



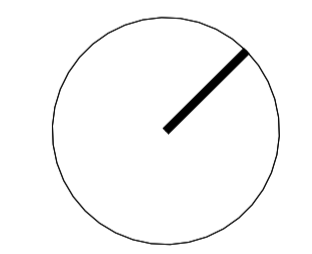
Note
 1. Exterior wall areas are included in area calculations for zoning purposes. Exterior walls are used only to demonstrate unit areas in accordance with the BC Housing Design Guidelines, which exclude area beyond the line of sheathing.
 Floor area exclusions for improved building performance are not being sought for this project.
 2. Unit areas shown on plans include in-suite bulk storage. Compliant bulk storage up to 3.7 m² is excluded from FSR totals in the project statistics.

Issued

No.	Date	Description
1	June 03, 2024	Issued for 100% SD
2	Sept 03, 2024	Issued for DP Enquiry
3	Nov. 14, 2024	Issued for RZ Text Amendment
5	Dec. 10, 2024	Issued for DP Application
6	Jan. 24, 2025	Issued for 100% DD
7	Aug. 21, 2025	Issued for RZ Text Amendment
9	Oct. 24, 2025	Issued for DP Application



**NOT FOR
 CONSTRUCTION**



Contractor Must Check & Verify all Dimensions on the Job.
 Do Not Scale Drawings.
 All Drawings, Specifications and Related Documents are the Copyright Property of the Architect and Must be Returned Upon Request. Reproduction of Drawings, Specifications and Related Documents in Part or in Whole is Forbidden Without the Written permission of the Architect.
 This Drawing is Not to be Used for Construction Until Signed by the Architect.

**Granville Loops
 Social Housing**
 1395 Rolston Street, Vancouver, BC
 231046

Autodesk Docx: /7231046-Granville Loops-R24/231046-ARCH-DCSA-Building-R24.rvt

2025-10-24 4:42:35 PM



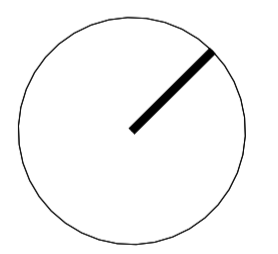
Note
 1. Exterior wall areas are included in area calculations for zoning purposes. Exterior walls are used only to demonstrate unit areas in accordance with the BC Housing Design Guidelines, which exclude area beyond the line of sheathing.
 Floor area exclusions for improved building performance are not being sought for this project.
 2. Unit areas shown on plans include in-suite bulk storage. Compliant bulk storage up to 3.7 m² is excluded from FSR totals in the project statistics.

Issued

No.	Date	Description
1	June 03, 2024	Issued for 100% SD
2	Sept 03, 2024	Issued for DP Enquiry
3	Nov. 14, 2024	Issued for RZ Text Amendment
5	Dec. 10, 2024	Issued for DP Application
6	Jan. 24, 2025	Issued for 100% DD
7	Aug. 21, 2025	Issued for RZ Text Amendment
9	Oct. 24, 2025	Issued for DP Application



**NOT FOR
 CONSTRUCTION**



Contractor Must Check & Verify all Dimensions on the Job.
 Do Not Scale Drawings.
 All Drawings, Specifications and Related Documents are the Copyright Property of the Architect and Must be Returned Upon Request. Reproduction of Drawings, Specifications and Related Documents in Part or in Whole is Forbidden Without the Written permission of the Architect.
 This Drawing is Not to be Used for Construction Until Signed by the Architect.

**Granville Loops
 Social Housing**
 1395 Rolston Street, Vancouver, BC
 231046

Level 08 Floor Plan
 As indicated
DP111

Autodesk DocId: /7231046-Granville Loops R24/231046-ARCH-05A-Building R24.rvt 2025-10-24 5:42:43 PM



Note
 1. Exterior wall areas are included in area calculations for zoning purposes. Exterior walls are used only to demonstrate unit areas in accordance with the BC Housing Design Guidelines, which exclude area beyond the line of sheathing.
 Floor area exclusions for improved building performance are not being sought for this project.
 2. Unit areas shown on plans include in-suite bulk storage. Compliant bulk storage up to 3.7 m² is excluded from FSR totals in the project statistics.

Issued

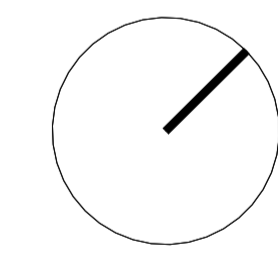
No.	Date	Description
1	June 03, 2024	Issued for 100% SD
2	Sept 03, 2024	Issued for DP Enquiry
3	Nov. 14, 2024	Issued for RZ Text Amendment
5	Dec. 10, 2024	Issued for DP Application
6	Jan. 24, 2025	Issued for 100% DD
7	Aug. 21, 2025	Issued for RZ Text Amendment
9	Oct. 24, 2025	Issued for DP Application

Autodesk Docx: //231046-Granville Loops R24/231046-ARCH-DCSA-Building R24.rvt

2025-10-24 8:42:56 PM



**NOT FOR
 CONSTRUCTION**



Contractor Must Check & Verify all Dimensions on the Job.
 Do Not Scale Drawings.
 All Drawings, Specifications and Related Documents are the Copyright Property of the Architect and Must be Returned Upon Request. Reproduction of Drawings, Specifications and Related Documents in Part or in Whole is Forbidden Without the Written permission of the Architect.
 This Drawing is Not to be Used for Construction Until Signed by the Architect.

**Granville Loops
 Social Housing**
 1395 Rolston Street, Vancouver, BC
 231046



Note
1. Exterior wall areas are included in area calculations for zoning purposes. Exterior walls are used only to demonstrate unit areas in accordance with the BC Housing Design Guidelines, which exclude area beyond the line of sheathing.
Floor area exclusions for improved building performance are not being sought for this project.
2. Unit areas shown on plans include in-suite bulk storage. Compliant bulk storage up to 3.7 m² is excluded from FSR totals in the project statistics.

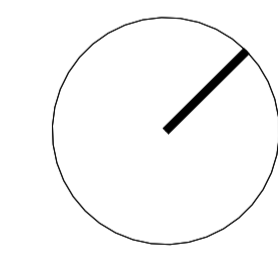
Issued

No.	Date	Description
1	June 03, 2024	Issued for 100% SD
2	Sept 03, 2024	Issued for DP Enquiry
3	Nov. 14, 2024	Issued for RZ Text Amendment
5	Dec. 10, 2024	Issued for DP Application
7	Aug. 21, 2025	Issued for RZ Text Amendment
9	Oct. 24, 2025	Issued for DP Application

Autodesk Docx: //231046-Granville Loops R24/231046-ARCH-DCSA-Building R24.rvt



**NOT FOR
CONSTRUCTION**



Contractor Must Check & Verify all Dimensions on the Job.
Do Not Scale Drawings.
All Drawings, Specifications and Related Documents are the Copyright Property of the Architect and Must be Returned Upon Request. Reproduction of Drawings, Specifications and Related Documents in Part or in Whole is Forbidden Without the Written permission of the Architect.
This Drawing is Not to be Used for Construction Until Signed by the Architect.

**Granville Loops
Social Housing**
1395 Rolston Street, Vancouver, BC
231046

Level 10-11 Floor Plan
As indicated

DP113



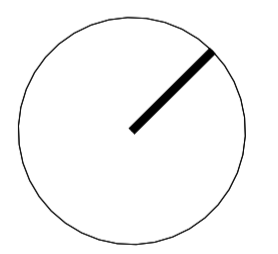
Note
 1. Exterior wall areas are included in area calculations for zoning purposes. Exterior walls are used only to demonstrate unit areas in accordance with the BC Housing Design Guidelines, which exclude area beyond the line of sheathing.
 Floor area exclusions for improved building performance are not being sought for this project.
 2. Unit areas shown on plans include in-suite bulk storage. Compliant bulk storage up to 3.7 m² is excluded from FSR totals in the project statistics.

Issued

No.	Date	Description
1	June 03, 2024	Issued for 100% SD
2	Sept 03, 2024	Issued for DP Enquiry
3	Nov. 14, 2024	Issued for RZ Text Amendment
5	Dec. 10, 2024	Issued for DP Application
6	Jan. 24, 2025	Issued for 100% DD
7	Aug. 21, 2025	Issued for RZ Text Amendment
9	Oct. 24, 2025	Issued for DP Application



**NOT FOR
 CONSTRUCTION**



Contractor Must Check & Verify all Dimensions on the Job.
 Do Not Scale Drawings.
 All Drawings, Specifications and Related Documents are the Copyright Property of the Architect and Must be Returned Upon Request. Reproduction of Drawings, Specifications and Related Documents in Part or in Whole is Forbidden Without the Written permission of the Architect.
 This Drawing is Not to be Used for Construction Until Signed by the Architect.

**Granville Loops
 Social Housing**
 1395 Rolston Street, Vancouver, BC
 231046

Autodesk Docu: /7231046-Granville Loops-R24/231046-ARCH-DSA-Building-R24.rvt

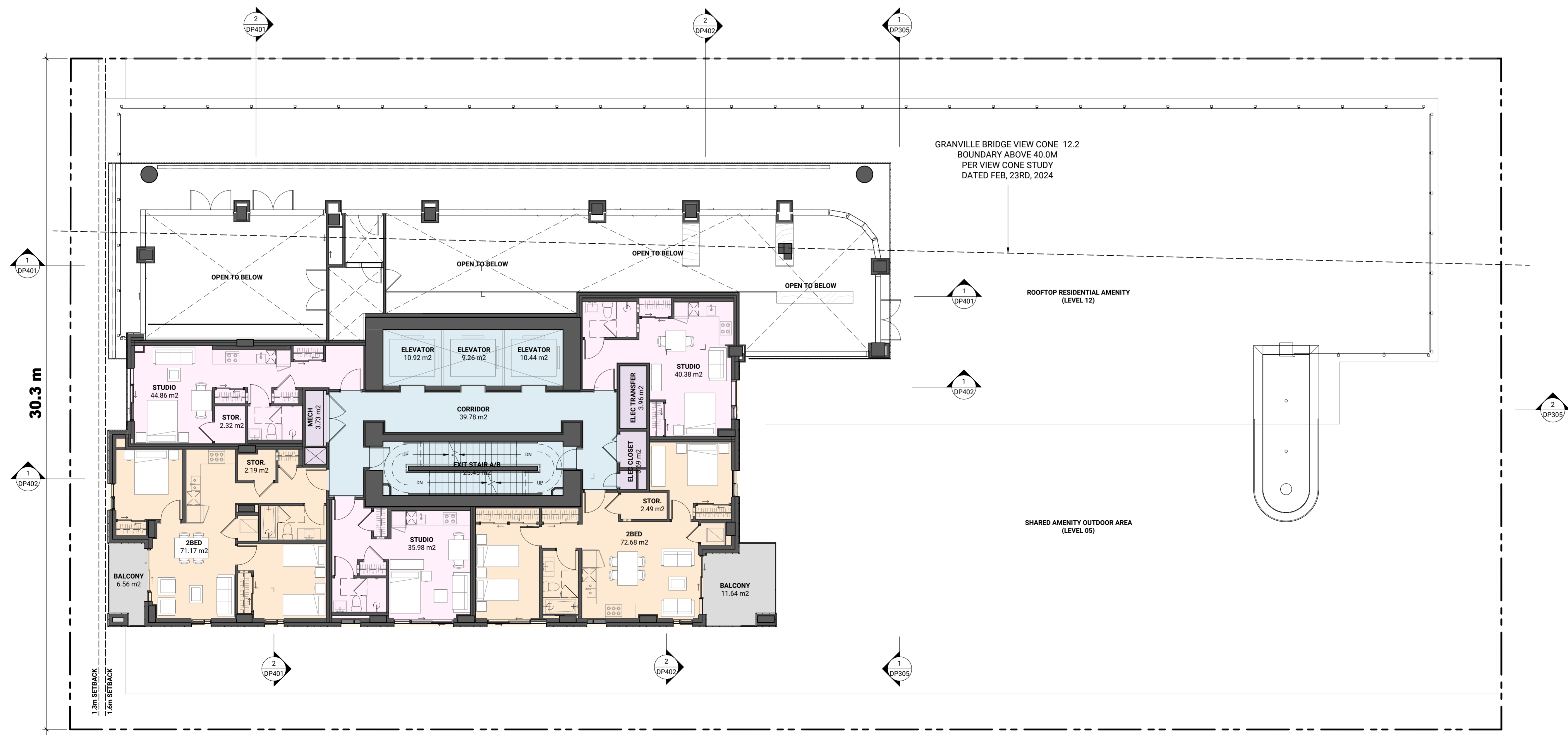
2025-10-24 5:43:24 PM



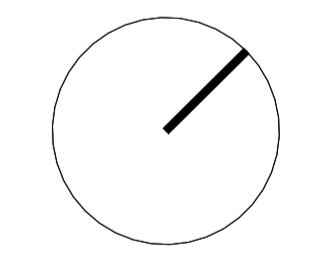
Note
 1. Exterior wall areas are included in area calculations for zoning purposes. Exterior walls are used only to demonstrate unit areas in accordance with the BC Housing Design Guidelines, which exclude area beyond the line of sheathing.
 Floor area exclusions for improved building performance are not being sought for this project.
 2. Unit areas shown on plans include in-suite bulk storage. Compliant bulk storage up to 3.7 m² is excluded from FSR totals in the project statistics.

Issued

No.	Date	Description
1	June 03, 2024	Issued for 100% SD
2	Sept 03, 2024	Issued for DP Enquiry
3	Nov. 14, 2024	Issued for RZ Text Amendment
5	Dec. 10, 2024	Issued for DP Application
6	Jan. 24, 2025	Issued for 100% DD
7	Aug. 21, 2025	Issued for RZ Text Amendment
9	Oct. 24, 2025	Issued for DP Application



**NOT FOR
 CONSTRUCTION**



Contractor Must Check & Verify all Dimensions on the Job.
 Do Not Scale Drawings.
 All Drawings, Specifications and Related Documents are the Copyright Property of the Architect and Must be Returned Upon Request. Reproduction of Drawings, Specifications and Related Documents in Part or in Whole is Forbidden Without the Written permission of the Architect.
 This Drawing is Not to be Used for Construction Until Signed by the Architect.

**Granville Loops
 Social Housing**
 1395 Rolston Street, Vancouver, BC
 231046

Level 13
 1:100
 DP115

Level 13 Floor Plan
 As indicated
DP115

Autodesk Docx: /7231046-Granville Loops R24/231046-ARCH-DSA-Building R24.rvt

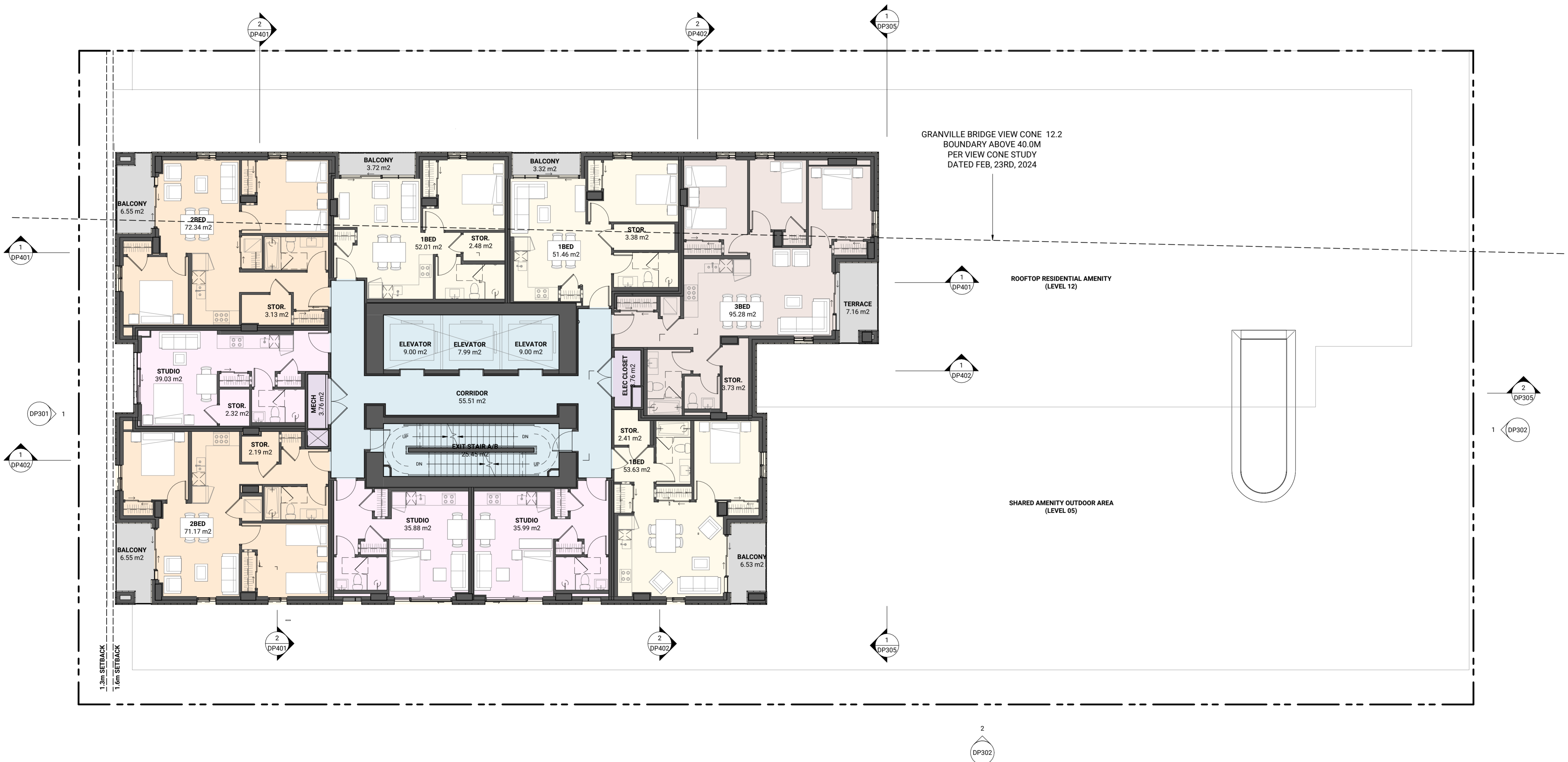
2025-10-24 5:43:33 PM



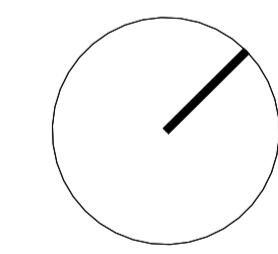
Note
 1. Exterior wall areas are included in area calculations for zoning purposes. Exterior walls are used only to demonstrate unit areas in accordance with the BC Housing Design Guidelines, which exclude area beyond the line of sheathing.
 Floor area exclusions for improved building performance are not being sought for this project.
 2. Unit areas shown on plans include in-suite bulk storage. Compliant bulk storage up to 3.7 m² is excluded from FSR totals in the project statistics.

Issued

No.	Date	Description
1	June 03, 2024	Issued for 100% SD
2	Sept 03, 2024	Issued for DP Enquiry
3	Nov. 14, 2024	Issued for RZ Text Amendment
5	Dec. 10, 2024	Issued for DP Application
6	Jan. 24, 2025	Issued for 100% DD
7	Aug. 21, 2025	Issued for RZ Text Amendment
9	Oct. 24, 2025	Issued for DP Application



**NOT FOR
 CONSTRUCTION**



Contractor Must Check & Verify all Dimensions on the Job.
 Do Not Scale Drawings.
 All Drawings, Specifications and Related Documents are the Copyright Property of the Architect and Must be Returned Upon Request. Reproduction of Drawings, Specifications and Related Documents in Part or in Whole is Forbidden Without the Written permission of the Architect.
 This Drawing is Not to be Used for Construction Until Signed by the Architect.

**Granville Loops
 Social Housing**
 1395 Rolston Street, Vancouver, BC
 231046

Level 14-20 Floor Plan
 As indicated
DP116

Autodesk Docx: /721046-Granville Loops R24/231046-ARCH-DSA-Building R24.rvt

2025-10-24 5:43:43 PM



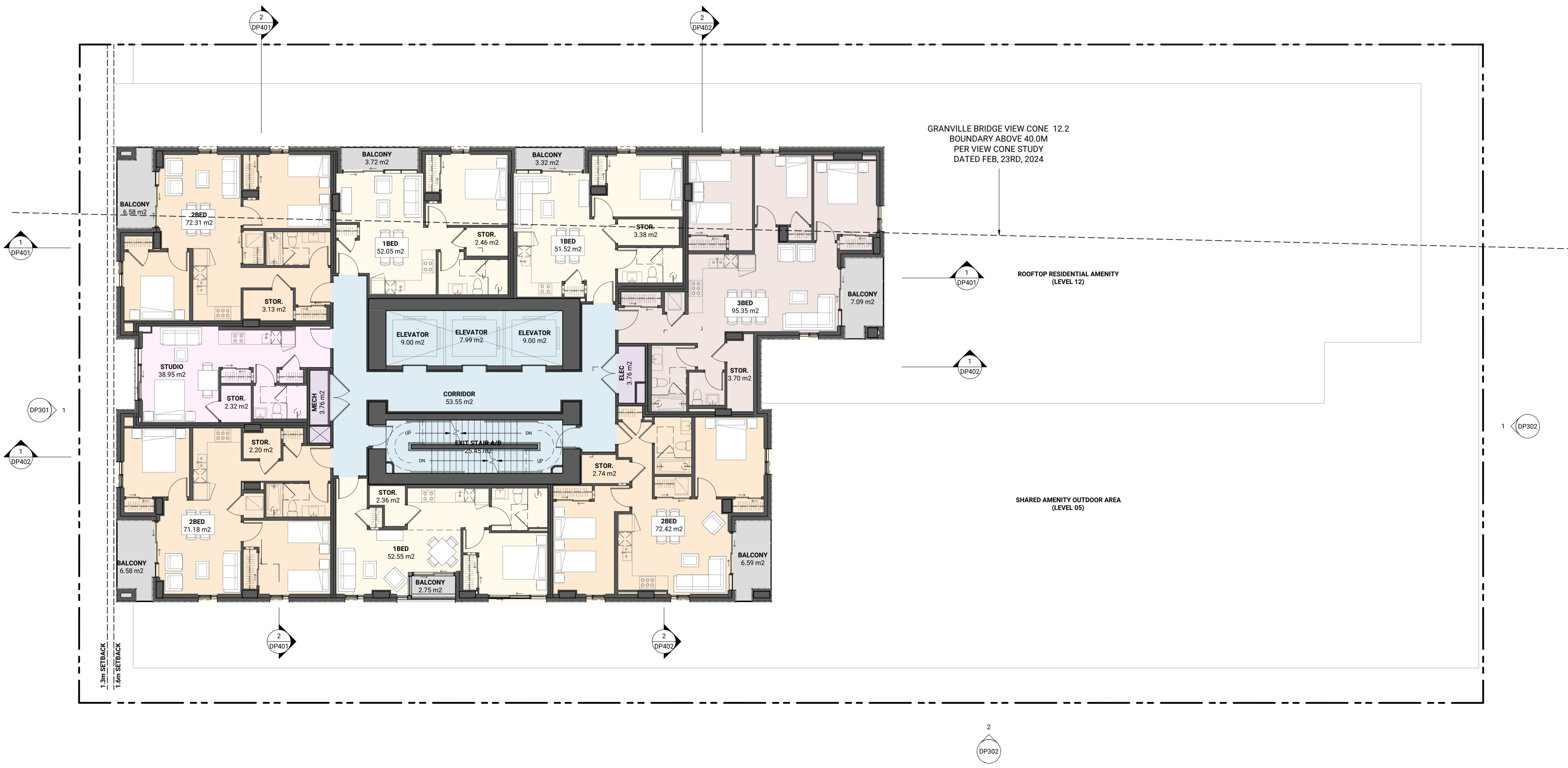
Note
 1. Exterior wall areas are included in area calculations for zoning purposes. Exterior walls are used only to demonstrate unit areas in accordance with the BC Housing Design Guidelines, which exclude area beyond the line of sheathing.
 Floor area exclusions for improved building performance are not being sought for this project.
 2. Unit areas shown on plans include in-suite bulk storage. Compliant bulk storage up to 3.7 m² is excluded from FSR totals in the project statistics.

Issued

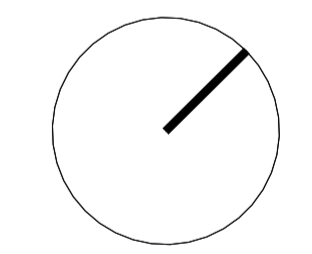
No.	Date	Description
1	June 03, 2024	Issued for 100% SD
2	Sept 03, 2024	Issued for DP Enquiry
3	Nov. 14, 2024	Issued for RZ Text Amendment
5	Dec. 10, 2024	Issued for DP Application
6	Jan. 24, 2025	Issued for 100% DD
7	Aug. 21, 2025	Issued for RZ Text Amendment
9	Oct. 24, 2025	Issued for DP Application

Autodesk Docx: /7231046-Granville Loops R24/231046-ARCH-DSA-Building R24.rvt

2025-10-24 4:43:53 PM



**NOT FOR
 CONSTRUCTION**



Contractor Must Check & Verify all Dimensions on the Job.
 Do Not Scale Drawings.
 All Drawings, Specifications and Related Documents are the Copyright Property of the Architect and Must be Returned Upon Request. Reproduction of Drawings, Specifications and Related Documents in Part or in Whole is Forbidden Without the Written permission of the Architect.
 This Drawing is Not to be Used for Construction Until Signed by the Architect.

**Granville Loops
 Social Housing**
 1395 Rolston Street, Vancouver, BC
 231046

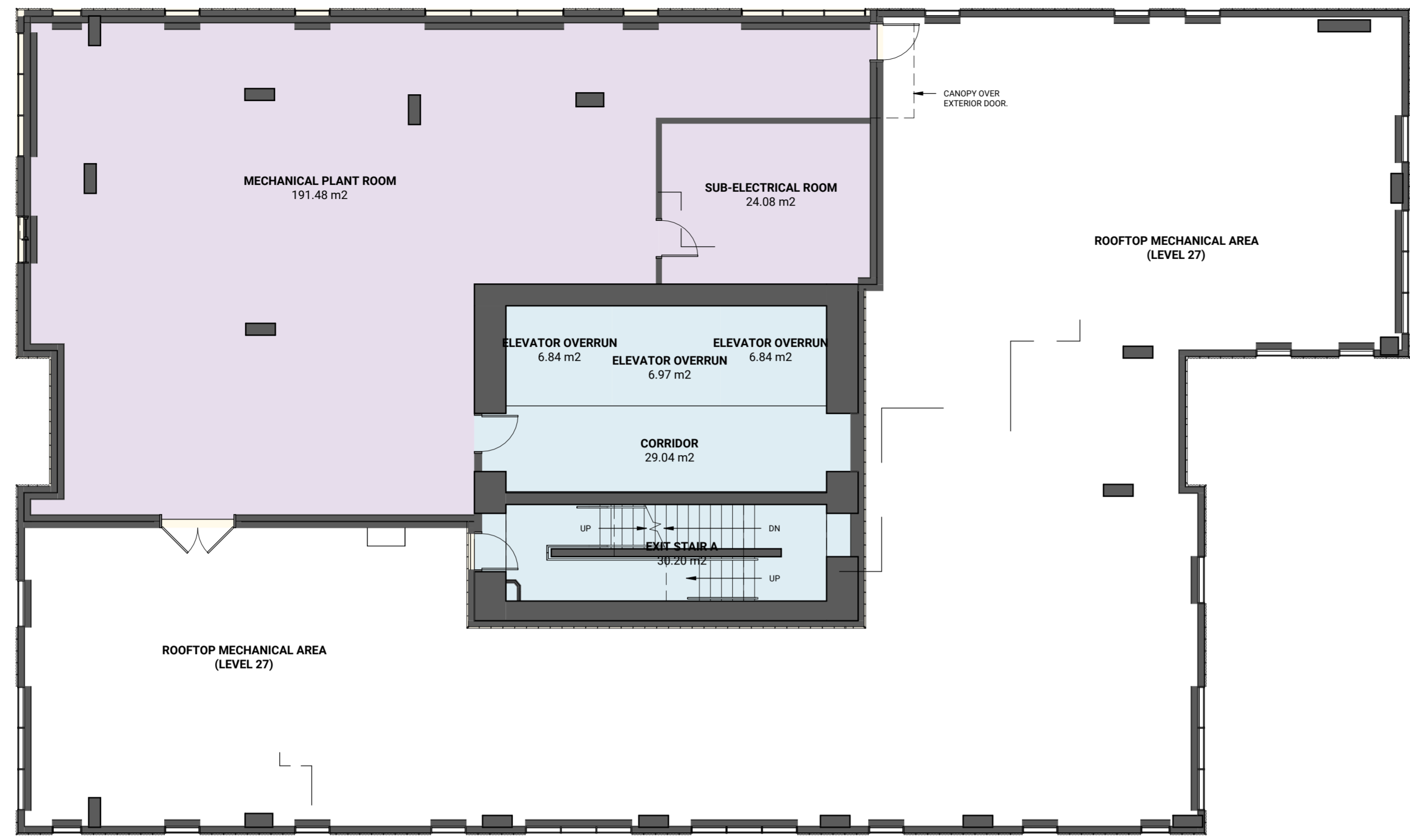
Level 21-26 Floor Plan
 As indicated

DP117

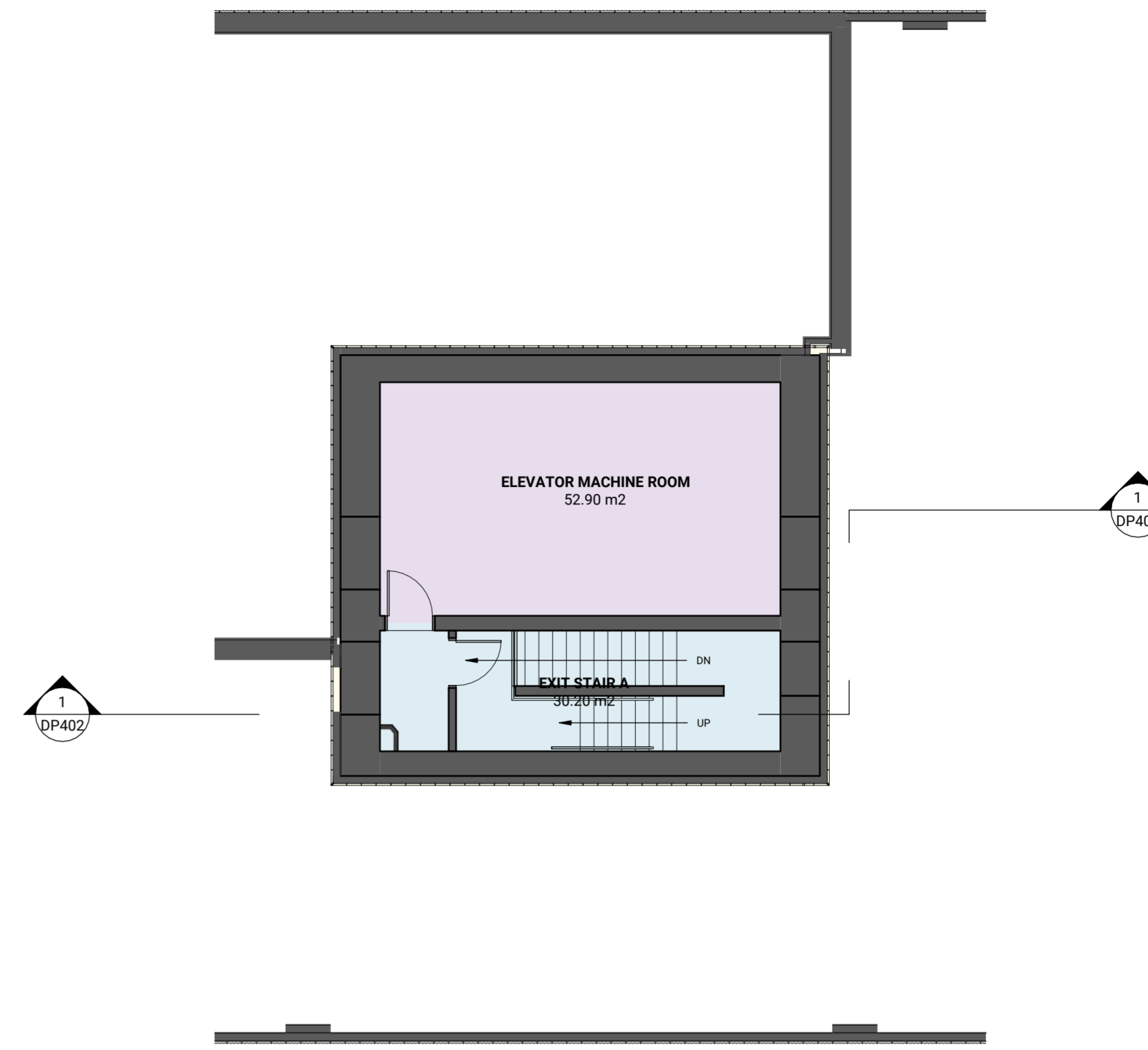


Issued

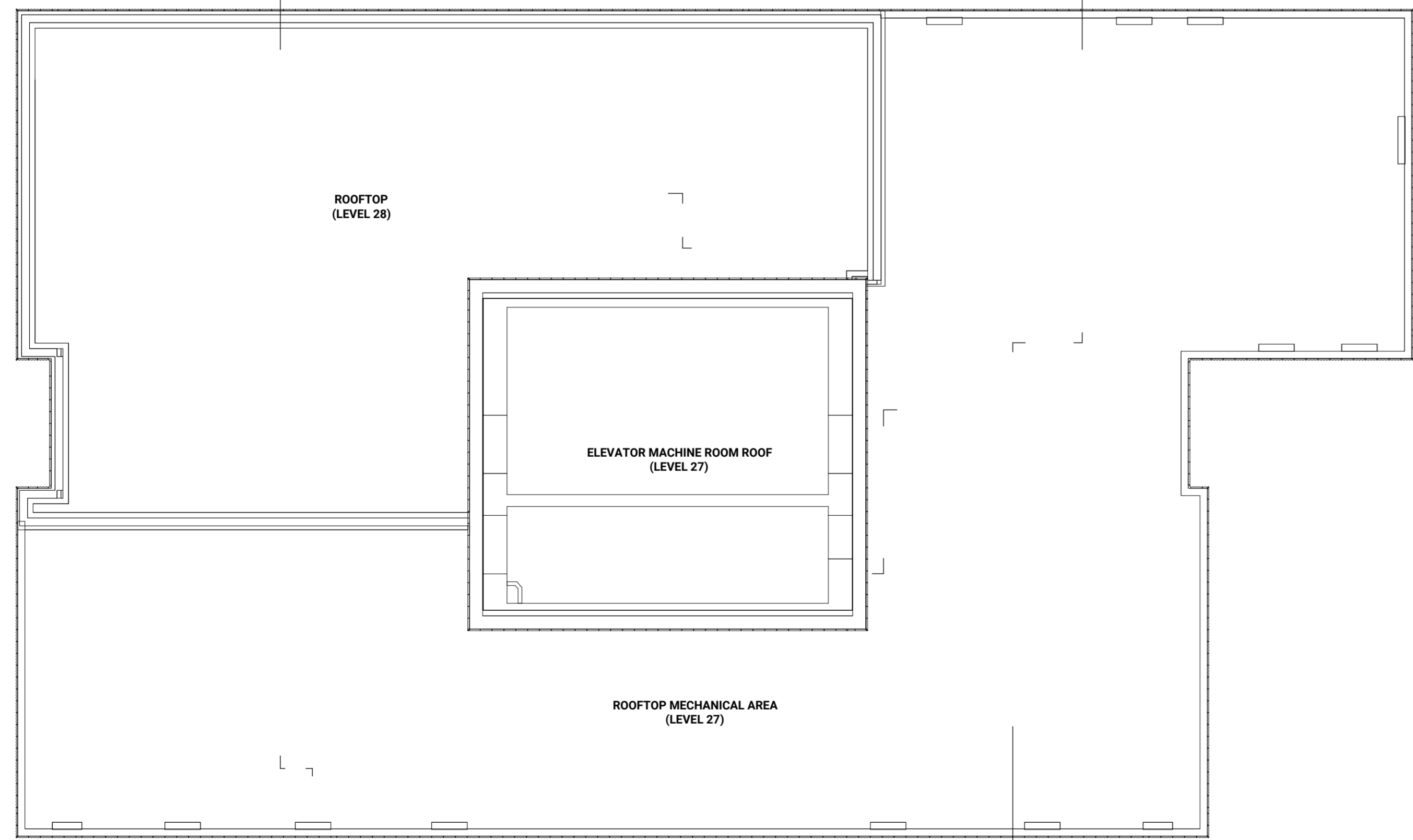
No.	Date	Description
1	June 03, 2024	Issued for 100% SD
2	Sept 03, 2024	Issued for DP Enquiry
3	Nov. 14, 2024	Issued for RZ Text Amendment
5	Dec. 10, 2024	Issued for DP Application
6	Jan. 24, 2025	Issued for 100% DD
7	Aug. 21, 2025	Issued for RZ Text Amendment
9	Oct. 24, 2025	Issued for DP Application



LEVEL 27 - MECHANICAL PENTHOUSE
 1:100 (1) DP118

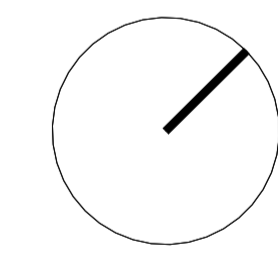


LEVEL 28 - ELEVATOR MACHINE ROOM
 1:100 (2) DP118



UPPER FLOOR PLAN
 1:100 (3) DP118

**NOT FOR
 CONSTRUCTION**



Contractor Must Check & Verify all Dimensions on the Job.
 Do Not Scale Drawings.
 All Drawings, Specifications and Related Documents are the Copyright Property of the Architect and Must be Returned Upon Request. Reproduction of Drawings, Specifications and Related Documents in Part or in Whole is Forbidden Without the Written permission of the Architect.
 This Drawing is Not to be Used for Construction Until Signed by the Architect.

**Granville Loops
 Social Housing**
 1395 Rolston Street, Vancouver, BC
 231046

Level 27-28 Floor Plans & Roof Plan
 1:100

DP118

Autodesk Docset: /231046-Granville Loops R24/231046-ARCH-DSA-Building R24.dvt 2025-10-24 5:44:01 PM



Material Legend - Building Envelope

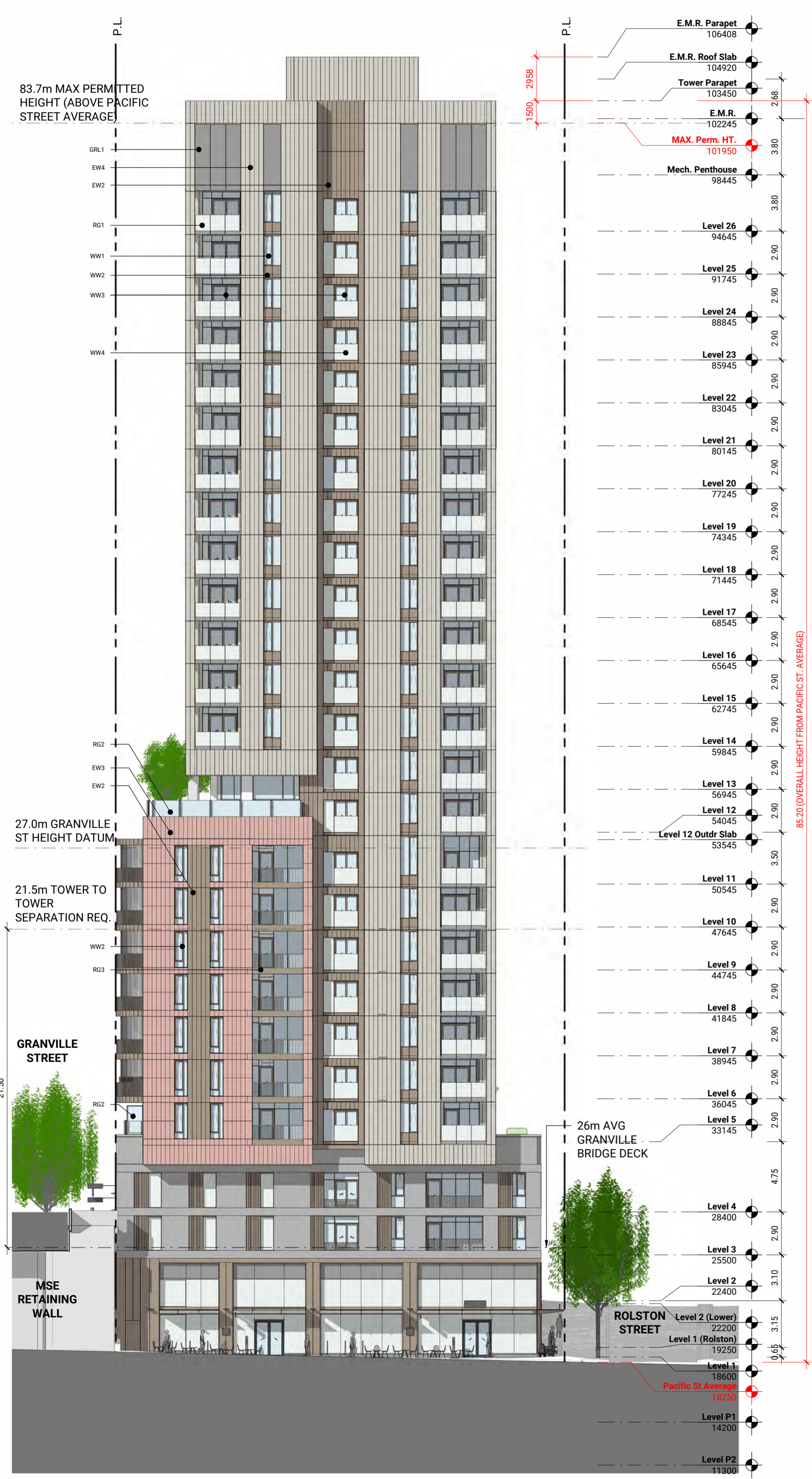
EW1 - Unit Masonry - Medium Grey	R01 - Glass Guard - Transparent
EW2 - Accent Panel - Metal or Combinations Panel	R02 - Glass Guard & Wind Screen - Transparent
EW3 - Profiled Terrazzo Feature Cladding	R03 - Metal Picket Guard - Painted
EW4 - Profiled Metal Panel Cladding Material (TBD)	R04 - Metal Picket Guard - Floor-to-four Height
EW5 - Exposed Architectural Concrete	R05 - Glass Canopy
EW6 - Townhome Frontage - Wood/Lock Metal Panel	R06 - Integrated Horizontal Mechanical Louvers
EW7 - Flat Metal Panel Cladding Material (TBD)	

Window Legend

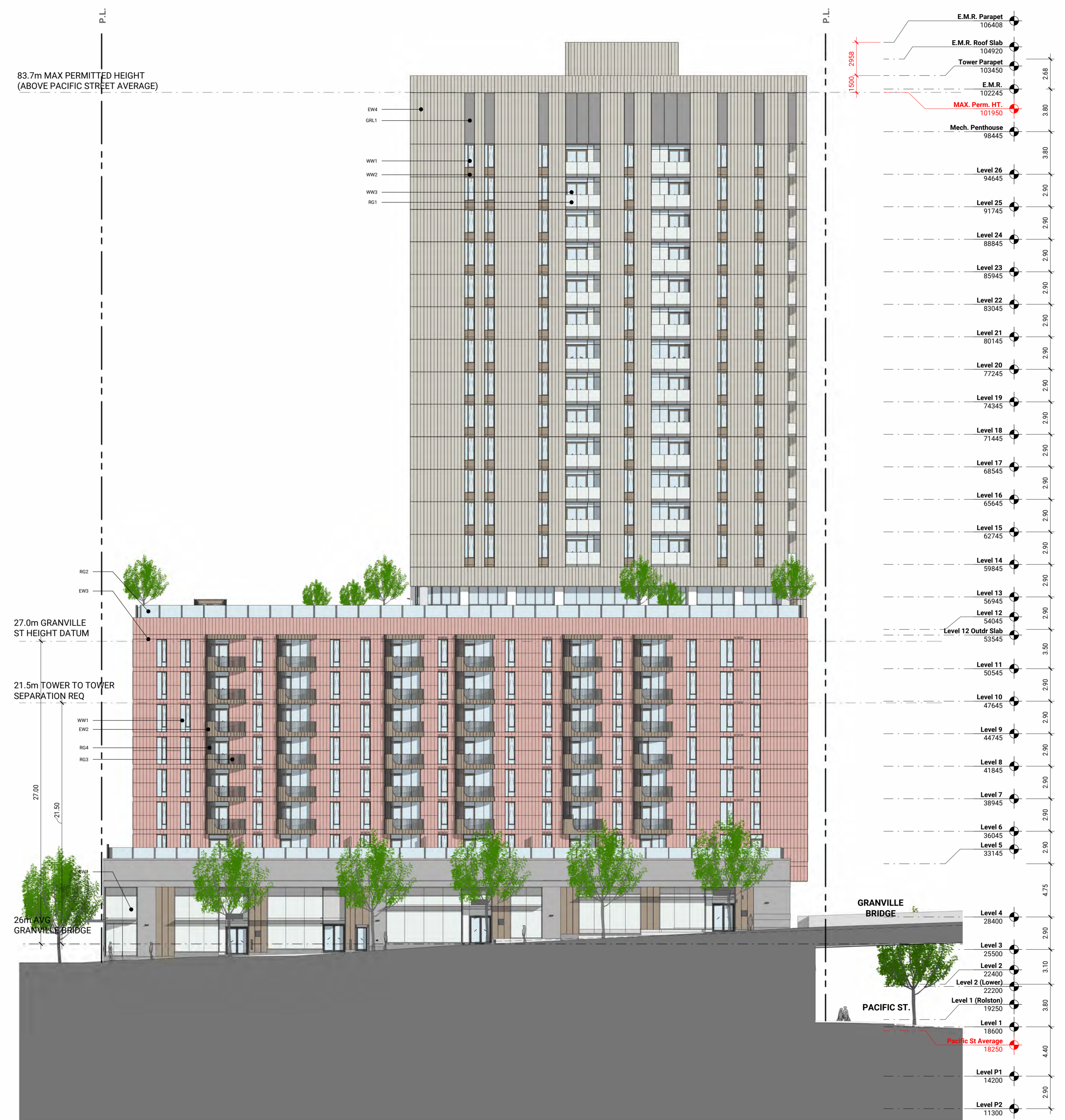
WW1 - Fiberglass Window Wall - Vision Glass
WW2 - Fiberglass Window Wall - Spandrel
WW3 - Sliding Balcony Door
WW4 - WW-Integrated Juliet Balcony Railing

Other Legend

CW1 - Curtain Wall Vision Glass
CW2 - Curtain Wall - Spandrel



South Elevation 1:200 DP301



West Elevation 1:200 DP301

Issued

No.	Date	Description
1	June 03, 2024	Issued for 100% SD
2	Sept 03, 2024	Issued for DP Enquiry
3	Nov. 14, 2024	Issued for RZ Text Amendment
4	Nov. 27, 2024	Issued for RZ Text Amendment R1
5	Dec. 10, 2024	Issued for DP Application
6	Jan. 24, 2025	Issued for 100% DD
7	Aug. 21, 2025	Issued for RZ Text Amendment
9	Oct. 24, 2025	Issued for DP Application

NOT FOR CONSTRUCTION

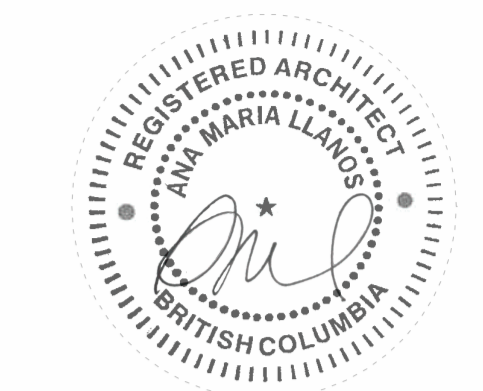
Contractor Must Check & Verify all Dimensions on the Job.
Do Not Scale Drawings.
All Drawings, Specifications and Related Documents are the Copyright Property of the Architect and Must be Returned Upon Request. Reproduction of Drawings, Specifications and Related Documents in Part or in Whole is Forbidden Without the Written permission of the Architect.
This Drawing is Not to be Used for Construction Until Signed by the Architect.

**Granville Loops
Social Housing**
1395 Rolston Street, Vancouver, BC
231046

Elevations South and West
1:200

DP301

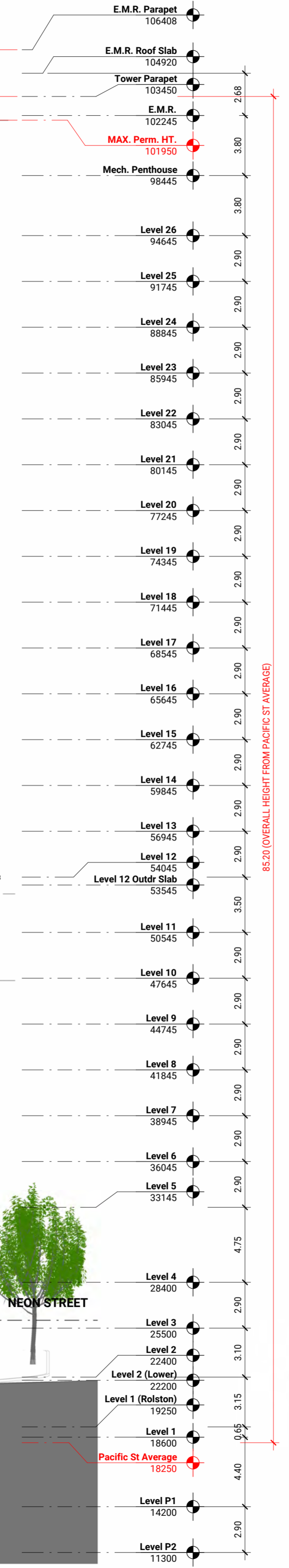
Autodesk Docx: /7231046-Granville Loops-R24/231046-ARCH-DSSA-Building-R24.rvt
2025-10-24 6:09:55 PM



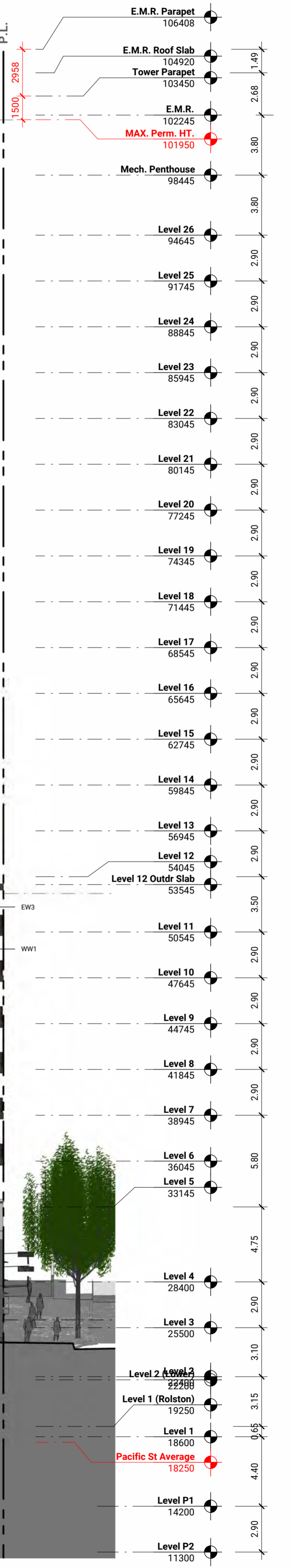
Material Legend - Building Envelope

EW1 - Unit Masonry - Medium Grey	RG1 - Glass Guard - Transparent
EW2 - Accent Panel - Metal or Composites Panel	RG2 - Glass Guard & Wind Screen - Transparent
EW3 - Profiled Terrazzo Feature Cladding	RG3 - Metal Picket Guard - Painted
EW4 - Profiled Metal Panel Cladding Material (TBD)	RG4 - Metal Picket Guard - Floor-to-four Height
EW5 - Exposed Architectural Concrete	RC1 - Glass Canopy
EW6 - Townhome Frontage - Wood/Lock Metal Panel	RC1 - Integrated Horizontal Mechanical Louvers
EW7 - Flat Metal Panel Cladding Material (TBD)	

CW1 - Curtain Wall Vision Glass
CW1A - Curtain Wall - Spandrel
WW1 - Fiberglass Window Wall - Vision Glass
WW2 - Fiberglass Window Wall - Spandrel
WW3 - Sliding Balcony Door
WW4 - WW-Integrated Juliet Balcony Railing



East Elevation 2
 1:200 DP302



North Elevation 1
 1:200 DP302

Issued

No.	Date	Description
1	June 03, 2024	Issued for 100% SD
2	Sept 03, 2024	Issued for DP Enquiry
3	Nov. 14, 2024	Issued for RZ Text Amendment
4	Nov. 27, 2024	Issued for RZ Text Amendment R1
5	Dec. 10, 2024	Issued for DP Application
6	Jan. 24, 2025	Issued for 100% DD
7	Aug. 21, 2025	Issued for RZ Text Amendment
9	Oct. 24, 2025	Issued for DP Application

**NOT FOR
 CONSTRUCTION**

Contractor Must Check & Verify all Dimensions on the Job.
 Do Not Scale Drawings.
 All Drawings, Specifications and Related Documents are the Copyright Property of the Architect and Must be Returned Upon Request. Reproduction of Drawings, Specifications and Related Documents in Part or in Whole is Forbidden Without the Written permission of the Architect.
 This Drawing is Not to be Used for Construction Until Signed by the Architect.

**Granville Loops
 Social Housing**
 1395 Rolston Street, Vancouver, BC
 231046

Elevations North and East
 1:200

DP302

Autodesk Docx: /731046-Granville Loops R24/231046-ARCH-DCSA-Building R24.rvt
 2025-10-27 12:52:15 PM



- Material Legend - Building Envelope**
- EW1 - Unit Masonry - Medium Grey
 - EW2 - Accent Panel - Metal or Combinations Panel
 - EW3 - Profiled Terrazzo Feature Cladding
 - EW4 - Profiled Metal Panel Cladding Material (TBD)
 - EW5 - Exposed Architectural Concrete
 - EW6 - Terrazzo Frontage - Wood Look Metal Panel
 - EW7 - Flat Metal Panel Cladding Material (TBD)
 - RC1 - Glass Canopy
 - GRL1 - Integrated Horizontal Mechanical Louvers
 - CW1 - Curtain Wall Vision Glass
 - CW7A - Curtain Wall - Spandrel
 - WW1 - Fiberglass Window Wall - Vision Glass
 - WW2 - Fiberglass Window Wall - Spandrel
 - WW3 - Sliding Balcony Door
 - WW4 - WW-Integrated Juliet Balcony Railing
 - RG1 - Glass Guard - Transparent
 - RG2 - Glass Guard & Wind Screen - Transparent
 - RG3 - Metal Picket Guard - Painted
 - RG4 - Metal Picket Guard - Floor-to-four Height



Enlarged Elevation - Lower Podium (South)

1 : 100
 DP303

Issued

No.	Date	Description
5	Dec. 10, 2024	Issued for DP Application
6	Jan. 24, 2025	Issued for 100% DD
7	Aug. 21, 2025	Issued for RZ Text Amendment
9	Oct. 24, 2025	Issued for DP Application

Autodesk Docx: /231046-Granville Loops/231046-ARCH-DSA-Building-R24.rvt



Enlarged Elevation - Lower Podium (West)

1 : 100
 DP303

NOT FOR
 CONSTRUCTION

Contractor Must Check & Verify all Dimensions on the Job.
 Do Not Scale Drawings.
 All Drawings, Specifications and Related Documents are the Copyright Property of the Architect and Must be Returned Upon Request. Reproduction of Drawings, Specifications and Related Documents in Part or in Whole is Forbidden Without the Written permission of the Architect.
 This Drawing is Not to be Used for Construction Until Signed by the Architect.

**Granville Loops
 Social Housing**
 1395 Rolston Street, Vancouver, BC
 231046

Enlarged Elevations South and West
 (Lower Podium)
 As indicated

DP303

2025-10-24 6:33:32 PM



Material Legend - Building Envelope

EW1 - Unit Masonry - Medium Grey	EW1 - Glass Guard - Transparent
EW2 - Accent Panel - Metal or Combinations Panel	RG2 - Glass Guard & Wind Screen - Transparent
EW3 - Profiled Terrazzo Feature Cladding	RG3 - Metal Picket Guard - Painted
EW4 - Profiled Metal Panel Cladding Material (TBD)	RG4 - Metal Picket Guard - Floor-to-four Height
EW5 - Exposed Architectural Concrete	RC1 - Glass Canopy
EW6 - Townhome Frontage - Wood Lock Metal Panel	GRL1 - Integrated Horizontal Mechanical Louvers
EW7 - Flat Metal Panel Cladding Material (TBD)	

CW1 - Curtain Wall Vision Glass
CW1A - Curtain Wall - Spandrel
WW1 - Fiberglass Window Wall - Vision Glass
WW2 - Fiberglass Window Wall - Spandrel
WW3 - Sliding Balcony Door
WW4 - WW-Integrated Juliet Balcony Railing



Enlarged Elevation - Lower Podium (North)

2
 1:100 DP304

Issued

No.	Date	Description
5	Dec. 10, 2024	Issued for DP Application
6	Jan. 24, 2025	Issued for 100% DD
7	Aug. 21, 2025	Issued for RZ Text Amendment
9	Oct. 24, 2025	Issued for DP Application



Enlarged Elevation - Lower Podium (East)

1
 1:100 DP304

**NOT FOR
 CONSTRUCTION**

Contractor Must Check & Verify all Dimensions on the Job.
 Do Not Scale Drawings.
 All Drawings, Specifications and Related Documents are the Copyright Property of the Architect and Must be Returned Upon Request. Reproduction of Drawings, Specifications and Related Documents in Part or in Whole is Forbidden Without the Written permission of the Architect.
 This Drawing is Not to be Used for Construction Until Signed by the Architect.

**Granville Loops
 Social Housing**
 1395 Rolston Street, Vancouver, BC
 231046

Enlarged Elevations North and East
 (Lower Podium)
 As indicated

DP304

Autodesk Docx: /231046-Granville Loops-RZ4-D31-ARCH-DCSA-Building-R24.rvt

2025-10-27 10:56:43 PM



- Material Legend - Building Envelope**
- EW1 - Unit Masonry - Medium Grey
 - EW2 - Accent Panel - Metal or Combinations Panel
 - EW3 - Profiled Terrazzo Feature Cladding
 - EW4 - Profiled Metal Panel Cladding Material (TBD)
 - EW5 - Exposed Architectural Concrete
 - EW6 - Sawtooth Frontage - Wood Look Metal Panel
 - EW7 - Flat Metal Panel Cladding Material (TBD)
 - CW1 - Curtain Wall Vision Glass
 - CW1A - Curtain Wall - Spandrel
 - WW1 - Fiberglass Window Wall - Vision Glass
 - WW2 - Fiberglass Window Wall - Spandrel
 - WW3 - Sliding Balcony Door
 - WW4 - WW-Integrated Juliet Balcony Railing
 - RG1 - Glass Guard - Transparent
 - RG2 - Glass Guard & Wind Screen - Transparent
 - RG3 - Metal Picket Guard - Painted
 - RG4 - Metal Picket Guard - Floor-to-four Height
 - RC1 - Glass Canopy
 - GRL1 - Integrated Horizontal Mechanical Louvers



Enlarged Elevations -Upper Podium at Outdoor Corridor 2
 1:100 DP305



Enlarged Elevation - Tower - North (L5 - L13) 1
 1:100 DP305

Issued

No.	Date	Description
5	Dec. 10, 2024	Issued for DP Application
6	Jan. 24, 2025	Issued for 100% DD
7	Aug. 21, 2025	Issued for RZ Text Amendment
9	Oct. 24, 2025	Issued for DP Application

**NOT FOR
 CONSTRUCTION**

Contractor Must Check & Verify all Dimensions on the Job.
 Do Not Scale Drawings.
 All Drawings, Specifications and Related Documents are the Copyright Property of the Architect and Must be Returned Upon Request. Reproduction of Drawings, Specifications and Related Documents in Part or in Whole is Forbidden Without the Written permission of the Architect.
 This Drawing is Not to be Used for Construction Until Signed by the Architect.

**Granville Loops
 Social Housing**
 1395 Rolston Street, Vancouver, BC
 231046

Obscured Elevations - Enlarged
 As indicated

DP305

Autodesk Docx: /231046-Granville Loops-R24/231046-ARCH-ARCH-Building-R24.rvt

2025-10-24 6:43:30 PM