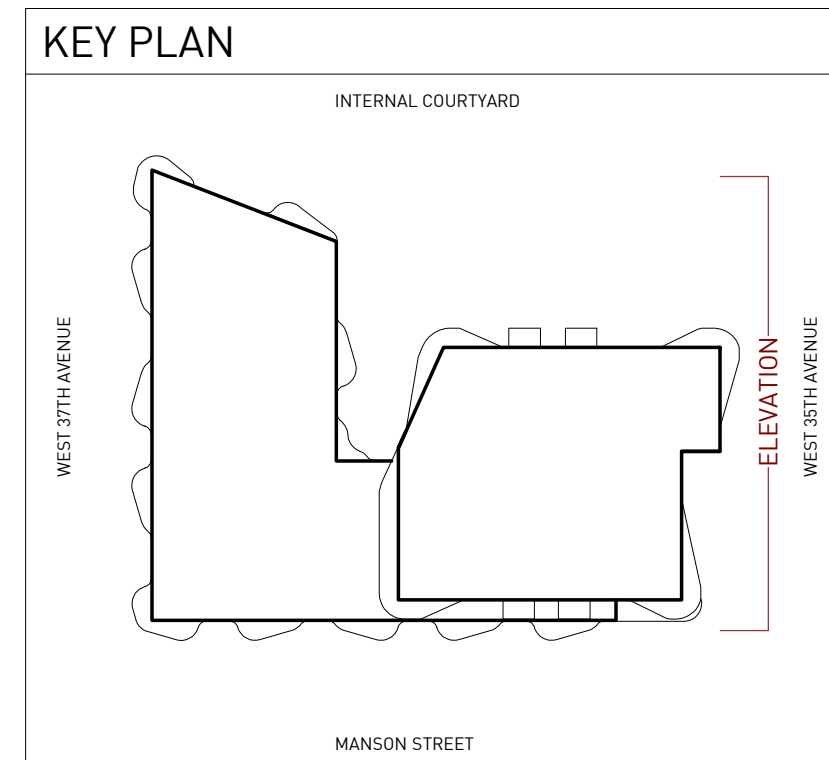




■ GBL ARCHITECTS INC.
 300-224 WEST 8TH AVENUE VANCOUVER, BC CANADA V6Y 1N5
 TEL 604 736 1156 FAX 604 731 5279
COPYRIGHT RESERVED. THIS PLAN AND DESIGN ARE AND AT ALL TIMES REMAIN THE EXCLUSIVE PROPERTY OF GBL ARCHITECTS INC. AND MAY NOT BE USED OR REPRODUCED WITHOUT THEIR WRITTEN CONSENT

NOTES

MATERIAL LEGEND		
#	DESCRIPTION	COLOUR
1A	Painted Concrete	Dark Beige (BM CC-572 Barnboard)
1B	Painted Concrete	Light Beige (BM OC-30 Gray Mist)
2A	Louwer	Dark Beige (BM CC-572 Barnboard)
3	Top Mounted Glass Railing	Clear
4	Glazing	Clear
5A	Metal Panel	Dark Beige (Alucobond - Driftwood Mica)
5B	Metal Panel	Light Beige (Alucobond, Oyster)
6A	Window Wall Mullions	Dark Beige (Colour to match BM CC-572 Barnboard)
7A	Face Mounted Vertical Angled Picket Railing	Dark Beige (Colour to match BM CC-572 Barnboard)



REVISIONS

NO.	DATE	DESCRIPTION
1	2023/12/06	Issued for Client Review
2	2024/06/03	80% DP Consultant Coordination
3	2024/08/12	DP Submission

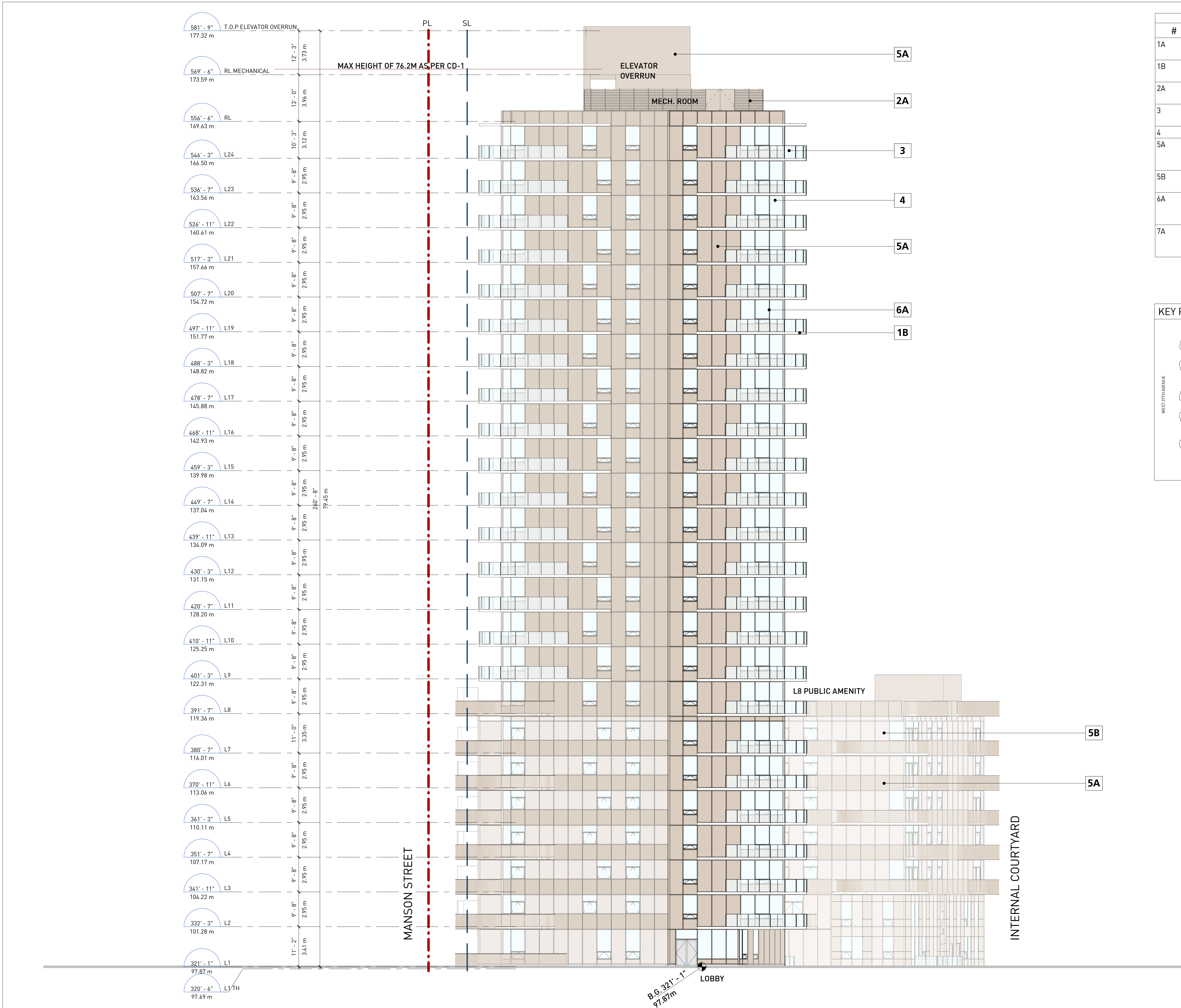
HEATHER LANDS
 PARCEL B

DP SUBMISSION

B1 WEST 35TH AVE. /
 NORTH ELEVATION

DATE	6/11/2024 10:51:52
DRAWN BY	Author
CHECKED BY	Checker
SCALE	As indicated
JOB NUMBER	23013

A5.01

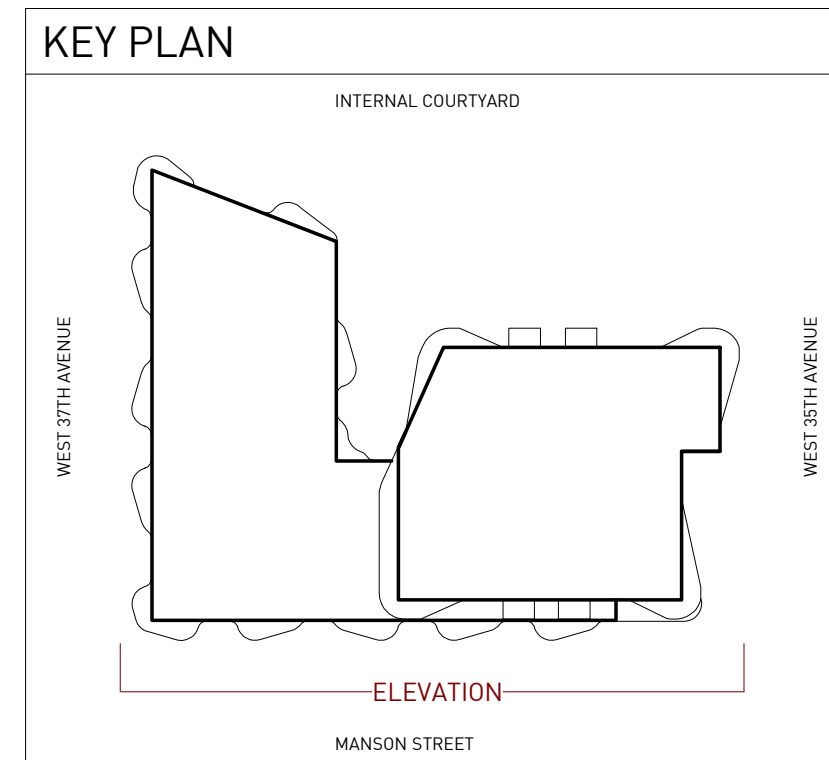




■ GBL ARCHITECTS INC.
 300-224 WEST 8TH AVENUE VANCOUVER, BC CANADA V6Y 1N5
 TEL 604 736 1156 FAX 604 731 5279
COPYRIGHT RESERVED. THIS PLAN AND DESIGN ARE AND AT ALL TIMES REMAIN THE EXCLUSIVE PROPERTY OF GBL ARCHITECTS INC. AND MAY NOT BE USED OR REPRODUCED WITHOUT THEIR WRITTEN CONSENT.

NOTES

MATERIAL LEGEND		
#	DESCRIPTION	COLOUR
1A	Painted Concrete	Dark Beige (BM CC-572 Barnboard)
1B	Painted Concrete	Light Beige (BM OC-30 Gray Mist)
2A	Louwer	Dark Beige (BM CC-572 Barnboard)
3	Top Mounted Glass Railing	Clear
4	Glazing	Clear
5A	Metal Panel	Dark Beige (Alucobond - Driftwood Mica)
5B	Metal Panel	Light Beige (Alucobond, Oyster)
6A	Window Wall Mullions	Dark Beige (Colour to match BM CC-572 Barnboard)
7A	Face Mounted Vertical Angled Picket Railing	Dark Beige (Colour to match BM CC-572 Barnboard)



REVISIONS

NO.	DATE	DESCRIPTION
1	2023/12/06	Issued for Client Review
2	2024/06/03	80% DP Consultant Coordination
3	2024/08/12	DP Submission

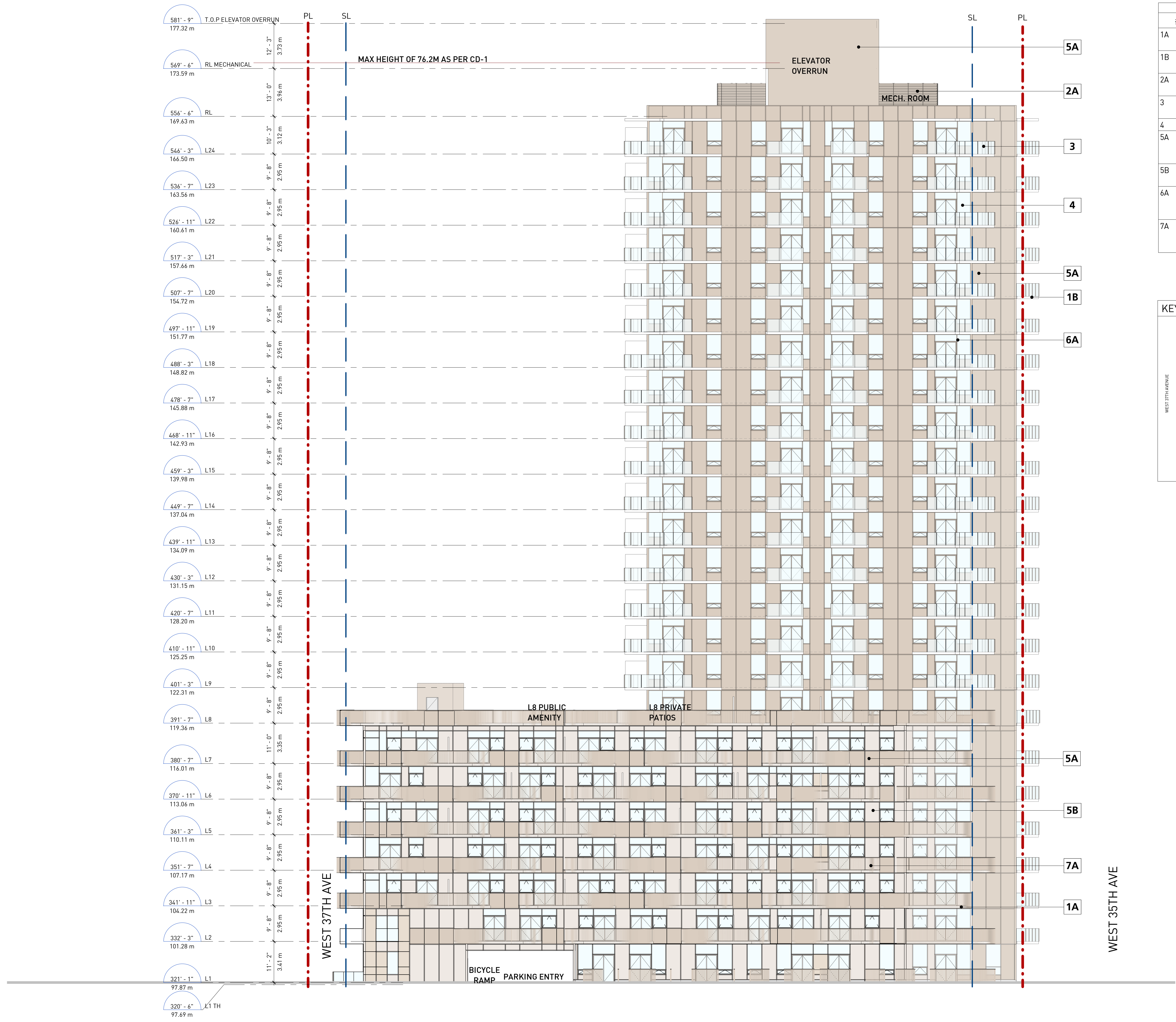
HEATHER LANDS
 PARCEL B

DP SUBMISSION

B1 MANSON STREET/ EAST
 ELEVATION

DATE	6/11/2024 10:52:28
DRAWN BY	Author
CHECKED BY	Checker
SCALE	As indicated
JOB NUMBER	23013

A5.02

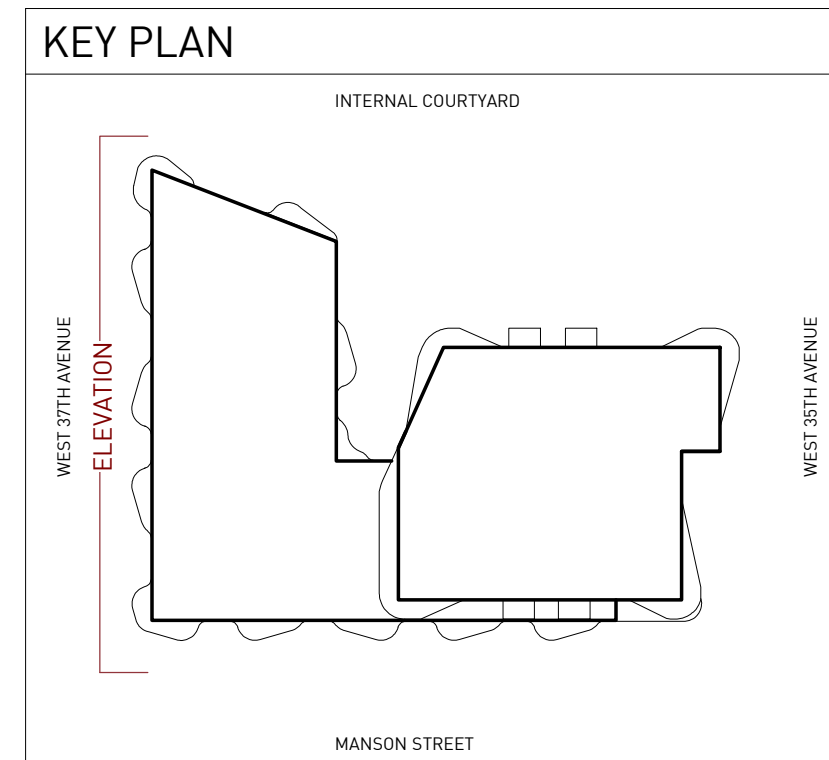




■ GBL ARCHITECTS INC.
 300-224 WEST 8TH AVENUE TEL 604 736 1156
 VANCOUVER, BC CANADA V6Y 1N5 FAX 604 731 5279
COPYRIGHT RESERVED. THIS PLAN AND DESIGN ARE AND AT ALL TIMES REMAIN THE EXCLUSIVE PROPERTY OF GBL ARCHITECTS INC. AND MAY NOT BE USED OR REPRODUCED WITHOUT THEIR WRITTEN CONSENT

NOTES

MATERIAL LEGEND		
#	DESCRIPTION	COLOUR
1A	Painted Concrete	Dark Beige (BM CC-572 Barnboard)
1B	Painted Concrete	Light Beige (BM OC-30 Gray Mist)
2A	Louwer	Dark Beige (BM CC-572 Barnboard)
3	Top Mounted Glass Railing	Clear
4	Glazing	Clear
5A	Metal Panel	Dark Beige (Alucobond - Driftwood Mica)
5B	Metal Panel	Light Beige (Alucobond, Oyster)
6A	Window Wall Mullions	Dark Beige (Colour to match BM CC-572 Barnboard)
7A	Face Mounted Vertical Angled Picket Railing	Dark Beige (Colour to match BM CC-572 Barnboard)



REVISIONS

NO.	DATE	DESCRIPTION
1	2023/10/13	Issued for Client Review 50%
2	2023/12/06	Issued for Client Review
3	2024/06/03	80% DP Consultant Coordination
4	2024/08/12	DP Submission

HEATHER LANDS
 PARCEL B

DP SUBMISSION

B1 WEST 37TH AVE. /
 SOUTH ELEVATION

DATE 6/11/2024 10:53:32
 DRAWN BY Author
 CHECKED BY Checker
 SCALE As indicated
 JOB NUMBER 23013

A5.03

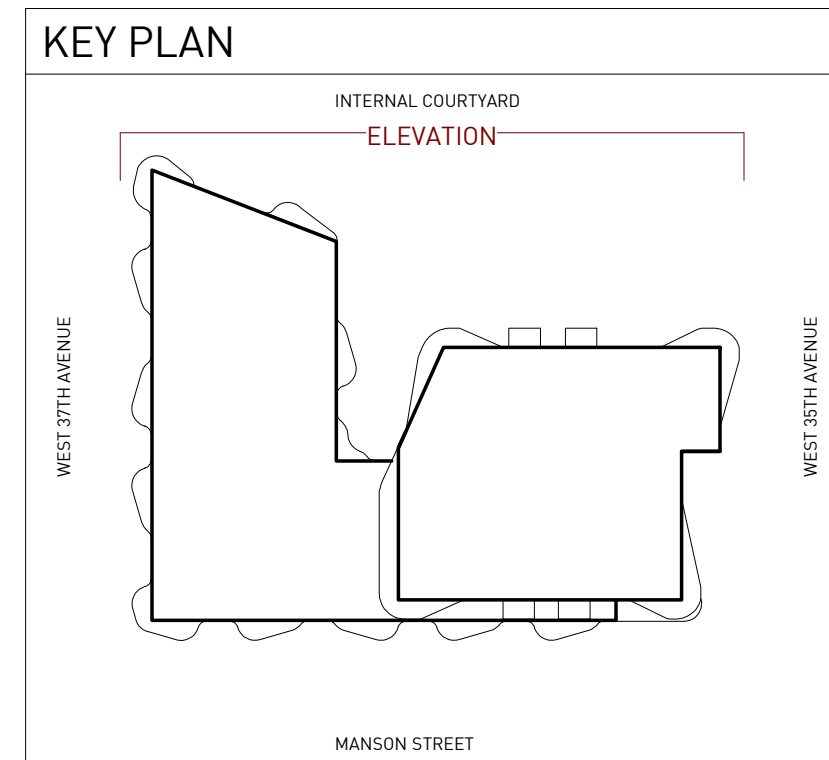




■ GBL ARCHITECTS INC.
 300-224 WEST 8TH AVENUE VANCOUVER, BC CANADA V6Y 1N5
 TEL 604 736 1156 FAX 604 731 5279
COPYRIGHT RESERVED. THIS PLAN AND DESIGN ARE AND AT ALL TIMES REMAIN THE EXCLUSIVE PROPERTY OF GBL ARCHITECTS INC. AND MAY NOT BE USED OR REPRODUCED WITHOUT THEIR WRITTEN CONSENT

NOTES

MATERIAL LEGEND		
#	DESCRIPTION	COLOUR
1A	Painted Concrete	Dark Beige (BM CC-572 Barnboard)
1B	Painted Concrete	Light Beige (BM OC-30 Gray Mist)
2A	Louwer	Dark Beige (BM CC-572 Barnboard)
3	Top Mounted Glass Railing	Clear
4	Glazing	Clear
5A	Metal Panel	Dark Beige (Alucobond - Driftwood Mica)
5B	Metal Panel	Light Beige (Alucobond, Oyster)
6A	Window Wall Mullions	Dark Beige (Colour to match BM CC-572 Barnboard)
7A	Face Mounted Vertical Angled Picket Railing	Dark Beige (Colour to match BM CC-572 Barnboard)



REVISIONS

NO.	DATE	DESCRIPTION
1	2023/10/13	Issued for Client Review 50%
2	2023/12/06	Issued for Client Review
3	2024/06/03	80% DP Consultant Coordination
4	2024/08/12	DP Submission

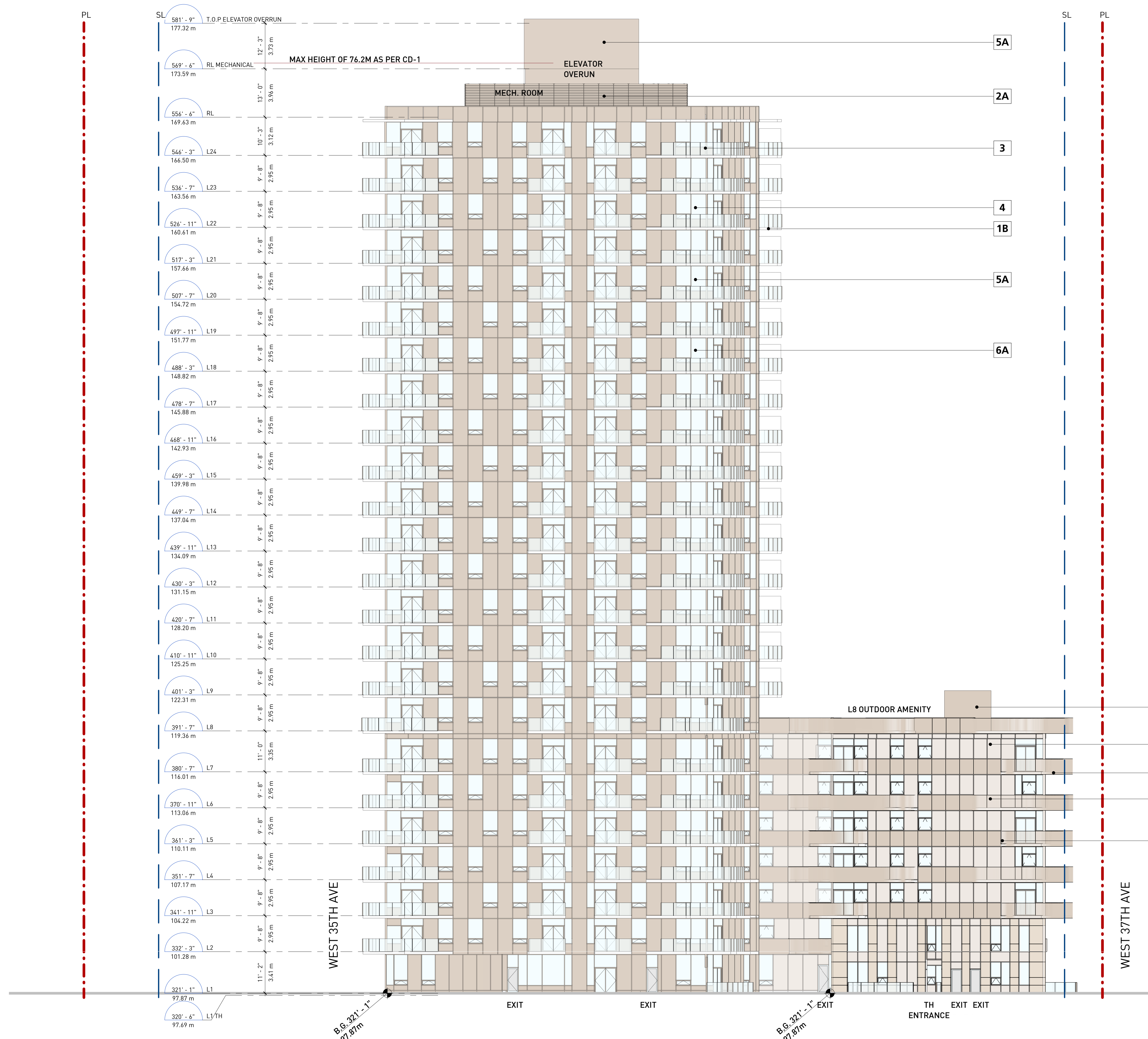
HEATHER LANDS
 PARCEL B

DP SUBMISSION

B1 COURTYARD / WEST
 ELEVATION

DATE 6/11/2024 10:54:05
 DRAWN BY Author
 CHECKED BY Checker
 SCALE As indicated
 JOB NUMBER 23013

A5.04

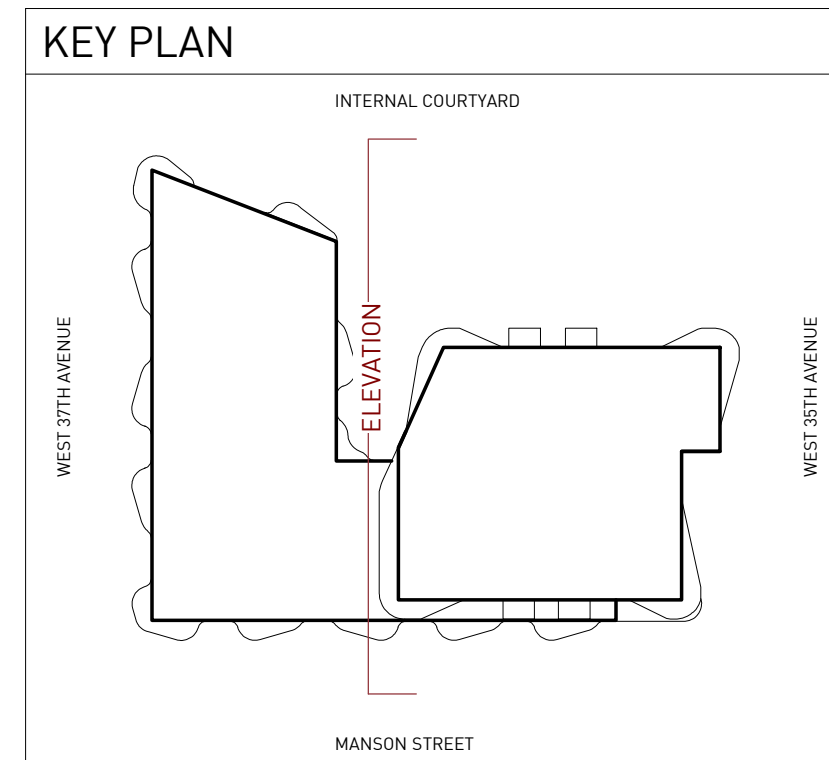




■ GBL ARCHITECTS INC.
 300-224 WEST 8TH AVENUE TEL 604 736 1156
 VANCOUVER, BC CANADA V6Y 1N5 FAX 604 731 5279
COPYRIGHT RESERVED. THIS PLAN AND DESIGN ARE AND AT ALL TIMES REMAIN THE EXCLUSIVE PROPERTY OF GBL ARCHITECTS INC. AND MAY NOT BE USED OR REPRODUCED WITHOUT THEIR WRITTEN CONSENT

NOTES

MATERIAL LEGEND		
#	DESCRIPTION	COLOUR
1A	Painted Concrete	Dark Beige (BM CC-572 Barnboard)
1B	Painted Concrete	Light Beige (BM OC-30 Gray Mist)
2A	Louver	Dark Beige (BM CC-572 Barnboard)
3	Top Mounted Glass Railing	Clear
4	Glazing	Clear
5A	Metal Panel	Dark Beige (Alucobond - Driftwood Mica)
5B	Metal Panel	Light Beige (Alucobond, Oyster)
6A	Window Wall Mullions	Dark Beige (Colour to match BM CC-572 Barnboard)
7A	Face Mounted Vertical Angled Picket Railing	Dark Beige (Colour to match BM CC-572 Barnboard)



REVISIONS

NO.	DATE	DESCRIPTION
1	2024/08/12	DP Submission

HEATHER LANDS
 PARCEL B

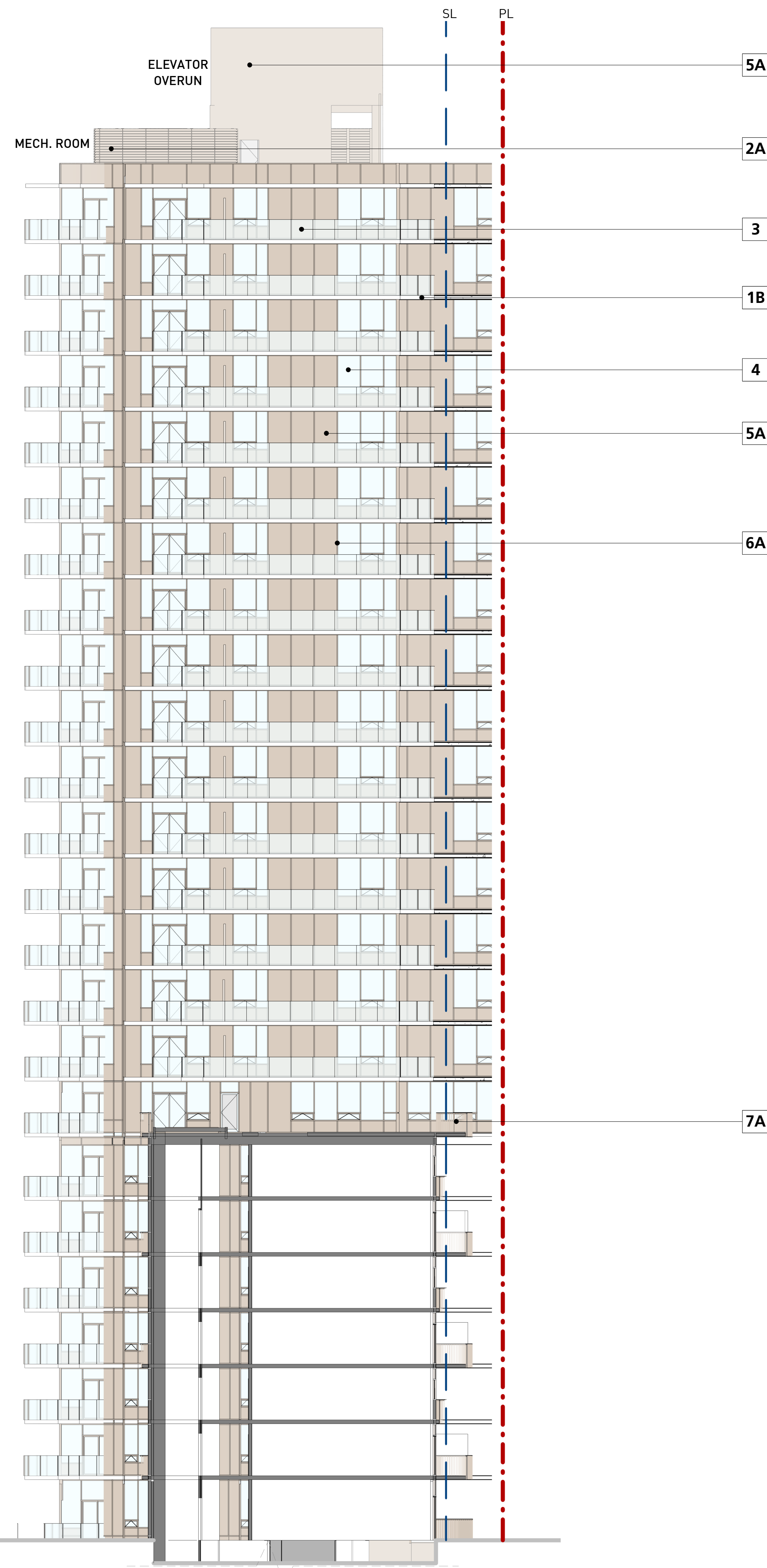
DP SUBMISSION

B1 SECTIONAL ELEVATION

DATE	6/11/2024 10:54:24
DRAWN BY	Author
CHECKED BY	Checker
SCALE	As indicated
JOB NUMBER	23013

A5.05

581' - 9"	T.O.P. ELEVATOR OVERRUN	177.32 m
569' - 6"	RL MECHANICAL	173.59 m
556' - 6"	RL	169.63 m
546' - 3"	L24	166.50 m
536' - 7"	L23	163.56 m
526' - 11"	L22	160.61 m
517' - 3"	L21	157.66 m
507' - 7"	L20	154.72 m
497' - 11"	L19	151.77 m
488' - 3"	L18	148.82 m
478' - 7"	L17	145.88 m
468' - 11"	L16	142.93 m
459' - 3"	L15	139.98 m
449' - 7"	L14	137.04 m
439' - 11"	L13	134.09 m
430' - 3"	L12	131.15 m
420' - 7"	L11	128.20 m
410' - 11"	L10	125.25 m
401' - 3"	L9	122.31 m
391' - 7"	L8	119.36 m
380' - 7"	L7	116.01 m
370' - 11"	L6	113.06 m
361' - 3"	L5	110.11 m
351' - 7"	L4	107.17 m
341' - 11"	L3	104.22 m
332' - 3"	L2	101.28 m
321' - 1"	L1	97.87 m
320' - 6"	L1,7H	97.69 m



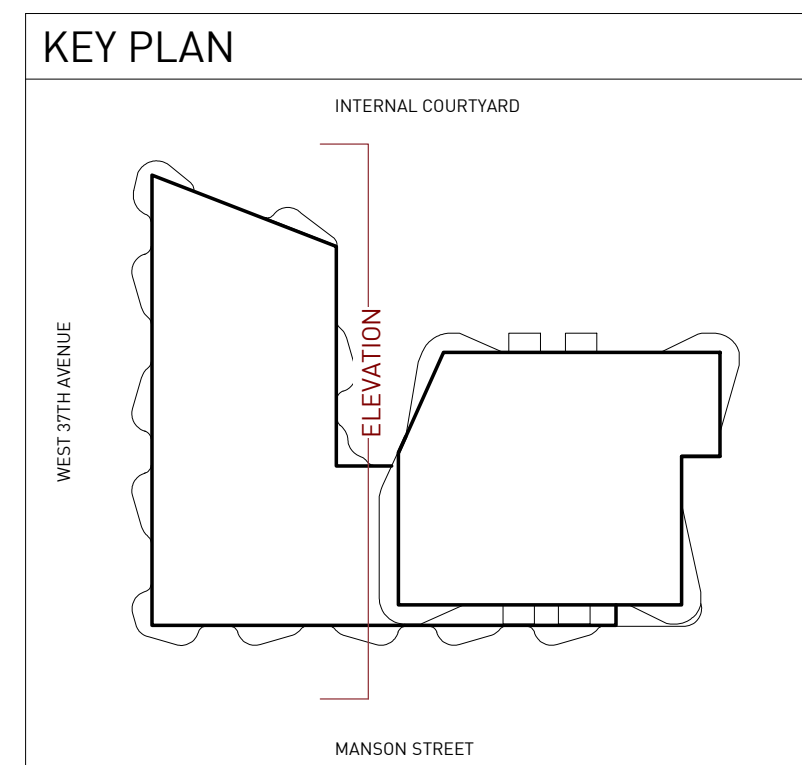
PLEASE NOTE THE PARKADE BELOW
 GROUND IS NOT ILLUSTRATED



■ GBL ARCHITECTS INC.
 300-224 WEST 8TH AVENUE TEL 604 736 1156
 VANCOUVER, BC CANADA V6Y 1N5 FAX 604 731 5279
COPYRIGHT RESERVED. THIS PLAN AND DESIGN ARE AND AT ALL TIMES REMAIN THE EXCLUSIVE PROPERTY OF GBL ARCHITECTS INC. AND MAY NOT BE USED OR REPRODUCED WITHOUT THEIR WRITTEN CONSENT

NOTES

MATERIAL LEGEND		
#	DESCRIPTION	COLOUR
1A	Painted Concrete	Dark Beige (BM CC-572 Barnboard)
1B	Painted Concrete	Light Beige (BM OC-30 Gray Mist)
2A	Louver	Dark Beige (BM CC-572 Barnboard)
3	Top Mounted Glass Railing	Clear
4	Glazing	Clear
5A	Metal Panel	Dark Beige (Alucobond - Driftwood Mica)
5B	Metal Panel	Light Beige (Alucobond, Oyster)
6A	Window Wall Mullions	Dark Beige (Colour to match BM CC-572 Barnboard)
7A	Face Mounted Vertical Angled Picket Railing	Dark Beige (Colour to match BM CC-572 Barnboard)



REVISIONS

NO.	DATE	DESCRIPTION
1	2024/08/12	DP Submission

HEATHER LANDS
 PARCEL B

DP SUBMISSION

B1 SECTIONAL ELEVATION

DATE	6/11/2024 10:54:32
DRAWN BY	Author
CHECKED BY	Checker
SCALE	As indicated
JOB NUMBER	23013

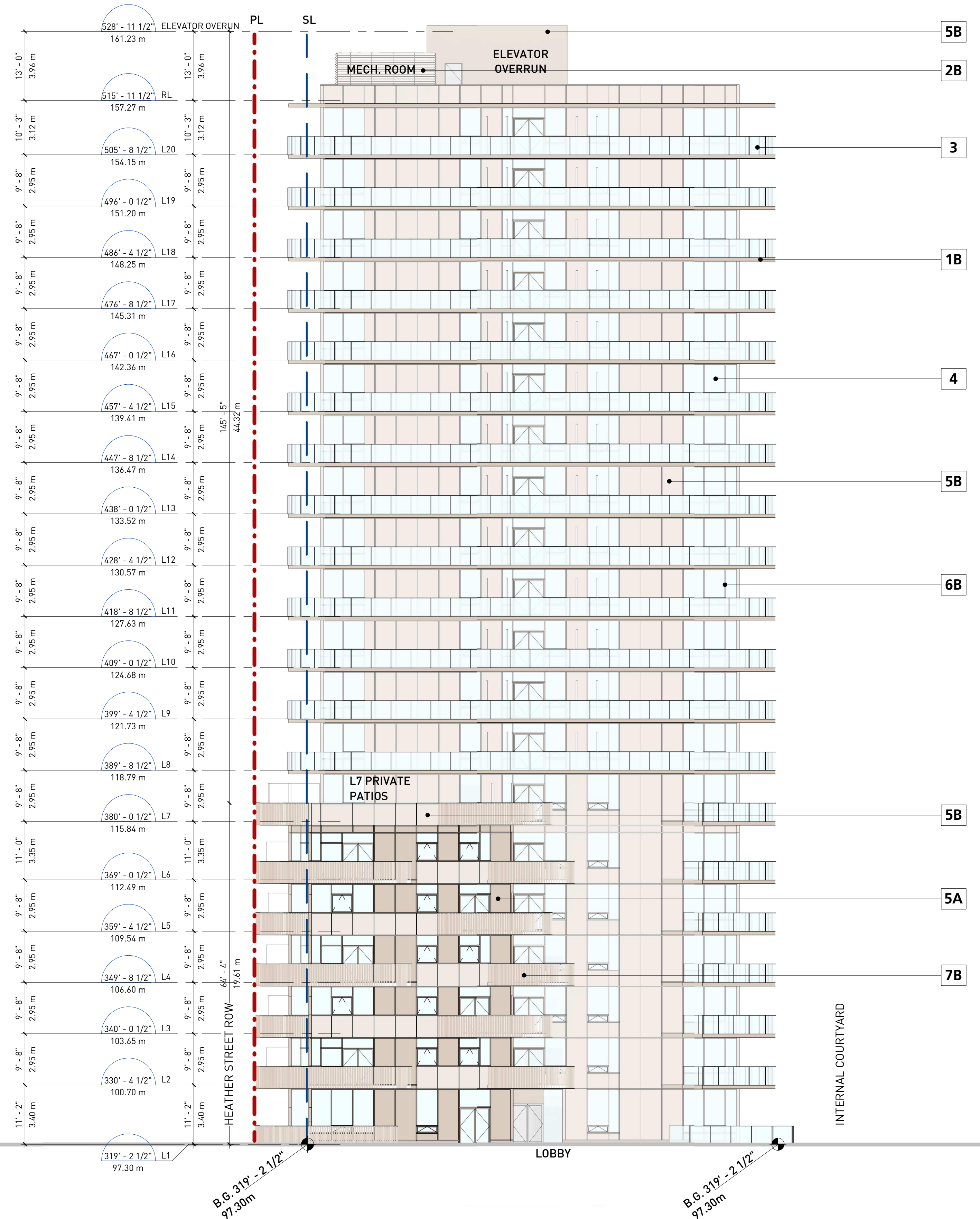
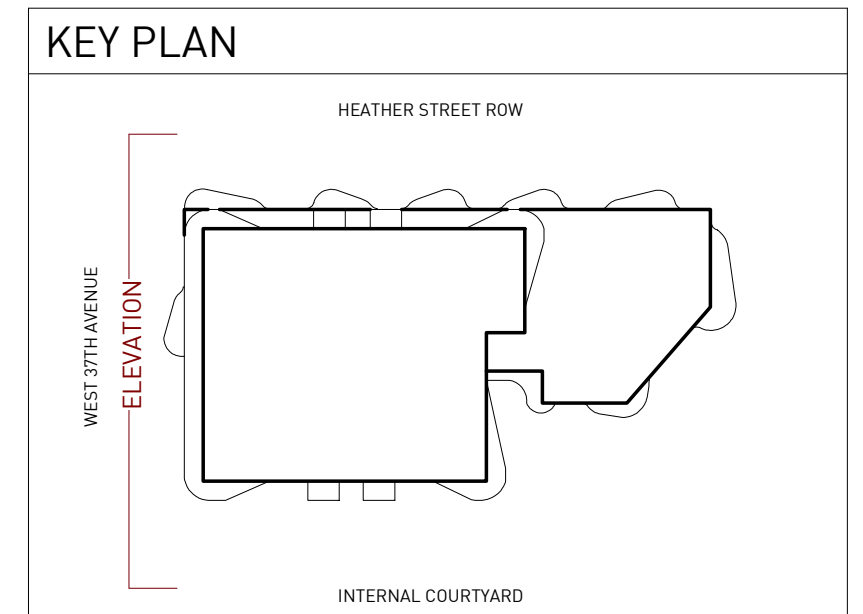
A5.06



■ GBL ARCHITECTS INC.
 300-224 WEST 8TH AVENUE TEL 604 736 1156
 VANCOUVER, BC CANADA V6Y 1N5 FAX 604 731 5279
COPYRIGHT RESERVED. THIS PLAN AND DESIGN ARE AND AT ALL TIMES REMAIN THE EXCLUSIVE PROPERTY OF GBL ARCHITECTS INC. AND MAY NOT BE USED OR REPRODUCED WITHOUT THEIR WRITTEN CONSENT.

NOTES

MATERIAL LEGEND		
#	DESCRIPTION	COLOUR
1B	Painted Concrete	Light Beige (BM OC-30 Gray Mist)
2B	Powder Coated Aluminum Mechanical Louver	Light Beige (BM OC-30 Gray Mist)
3	Top Mounted Tempered and Laminated Glazed Railing	Clear
4	Double Glazed Window Wall	Clear
5A	Metal Panel	Dark Beige (Alucobond - Driftwood Mica)
5B	Metal Panel	Light Beige (Alucobond, Oyster)
6B	Window Wall Mullions	Light Beige (Colour to match BM OC-30 Gray Mist)
7B	Face Mounted Powder-Coated Metal Railing	Light Beige (Colour to match BM OC-30 Gray Mist)



REVISIONS

NO.	DATE	DESCRIPTION
1	2023/12/06	Issued for Client Review
2	2024/05/06	80% DP Consultant Coordination
3	2024/08/12	DP Submission

HEATHER LANDS
 PARCEL B

DP SUBMISSION

B2 WEST 37TH AVE. /
 SOUTH ELEVATION

DATE	6/10/2024 3:02:50 PM
DRAWN BY	Author
CHECKED BY	Checker
SCALE	As indicated
JOB NUMBER	23013

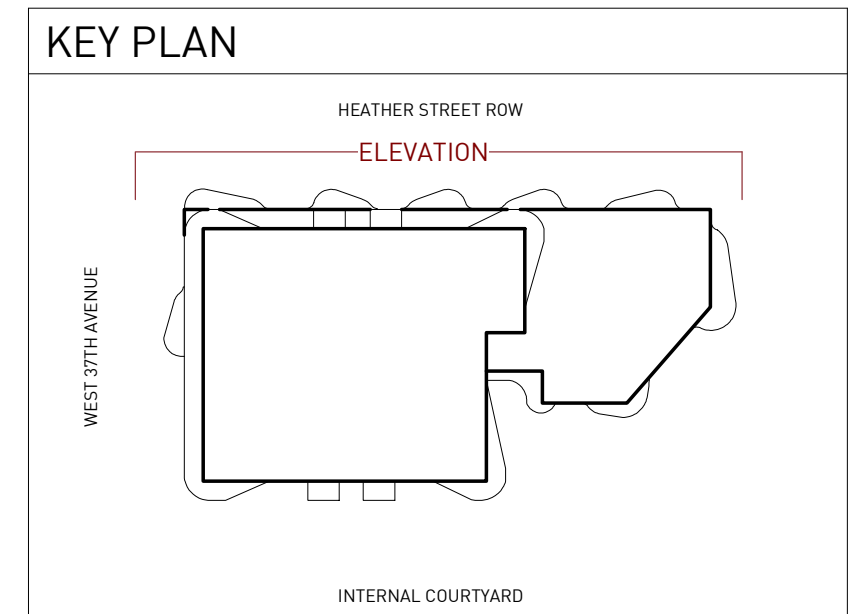
A5.07



GBL ARCHITECTS INC.
 300-224 WEST 8TH AVENUE VANCOUVER, BC CANADA V6Y 1N5
 TEL 604 736 1156 FAX 604 731 5279
COPYRIGHT RESERVED. THIS PLAN AND DESIGN ARE AND AT ALL TIMES REMAIN THE EXCLUSIVE PROPERTY OF GBL ARCHITECTS INC. AND MAY NOT BE USED OR REPRODUCED WITHOUT THEIR WRITTEN CONSENT.

NOTES

MATERIAL LEGEND		
#	DESCRIPTION	COLOUR
1B	Painted Concrete	Light Beige (BM OC-30 Gray Mist)
2B	Powder Coated Aluminum Mechanical Louver	Light Beige (BM OC-30 Gray Mist)
3	Top Mounted Tempered and Laminated Glazed Railing	Clear
4	Double Glazed Window Wall	Clear
5A	Metal Panel	Dark Beige (Alucobond - Driftwood Mica)
5B	Metal Panel	Light Beige (Alucobond, Oyster)
6B	Window Wall Mullions	Light Beige (Colour to match BM OC-30 Gray Mist)
7B	Face Mounted Powder-Coated Metal Railing	Light Beige (Colour to match BM OC-30 Gray Mist)



REVISIONS

NO.	DATE	DESCRIPTION
1	2023/12/06	Issued for Client Review
2	2024/05/06	80% DP Consultant Coordination
3	2024/08/12	DP Submission

HEATHER LANDS
 PARCEL B

DP SUBMISSION

B2 HEATHER ST. ROW /
 WEST ELEVATION

DATE 6/10/2024 3:05:32 PM
 DRAWN BY Author
 CHECKED BY Checker
 SCALE As indicated
 JOB NUMBER 23013

A5.08

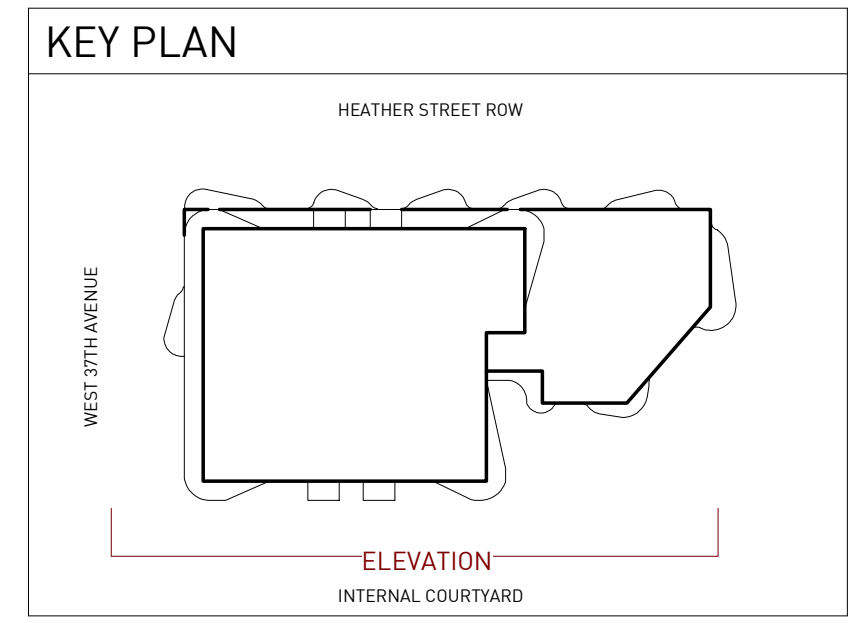




■ GBL ARCHITECTS INC.
 300-224 WEST 8TH AVENUE VANCOUVER, BC CANADA V6Y 1N5
 TEL 604 736 1156 FAX 604 731 5279
COPYRIGHT RESERVED. THIS PLAN AND DESIGN ARE AND AT ALL TIMES REMAIN THE EXCLUSIVE PROPERTY OF GBL ARCHITECTS INC. AND MAY NOT BE USED OR REPRODUCED WITHOUT THEIR WRITTEN CONSENT.

NOTES

MATERIAL LEGEND		
#	DESCRIPTION	COLOUR
1B	Painted Concrete	Light Beige (BM OC-30 Gray Mist)
2B	Powder Coated Aluminum Mechanical Louver	Light Beige (BM OC-30 Gray Mist)
3	Top Mounted Tempered and Laminated Glazed Railing	Clear
4	Double Glazed Window Wall	Clear
5A	Metal Panel	Dark Beige (Alucobond - Driftwood Mica)
5B	Metal Panel	Light Beige (Alucobond, Oyster)
6B	Window Wall Mullions	Light Beige (Colour to match BM OC-30 Gray Mist)
7B	Face Mounted Powder-Coated Metal Railing	Light Beige (Colour to match BM OC-30 Gray Mist)



REVISIONS

NO.	DATE	DESCRIPTION
1	2023/10/20	50% DP Consultant Coordination
2	2023/12/06	Issued for Client Review
3	2024/05/06	80% DP Consultant Coordination
4	2024/08/12	DP Submission

HEATHER LANDS
 PARCEL B

DP SUBMISSION

B2 COURTYARD / EAST
 ELEVATION

DATE 6/10/2024 3:09:17 PM
 DRAWN BY Author
 CHECKED BY Checker
 SCALE As indicated
 JOB NUMBER 23013

A5.09

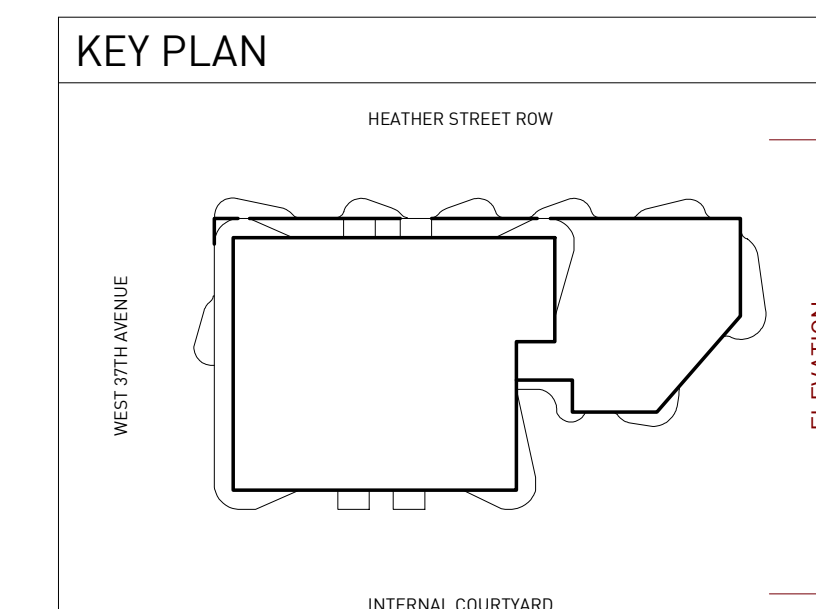




■ GBL ARCHITECTS INC.
 300-224 WEST 8TH AVENUE TEL 604 736 1156
 VANCOUVER, BC CANADA V6Y 1N5 FAX 604 731 5279
COPYRIGHT RESERVED. THIS PLAN AND DESIGN ARE AND AT ALL TIMES REMAIN THE
 EXCLUSIVE PROPERTY OF GBL ARCHITECTS INC. AND MAY NOT BE USED OR
 REPRODUCED WITHOUT THEIR WRITTEN CONSENT

NOTES

MATERIAL LEGEND		
#	DESCRIPTION	COLOUR
1B	Painted Concrete	Light Beige (BM OC-30 Gray Mist)
2B	Powder Coated Aluminum Mechanical Louver	Light Beige (BM OC-30 Gray Mist)
3	Top Mounted Tempered and Laminated Glazed Railing	Clear
4	Double Glazed Window Wall	Clear
5A	Metal Panel	Dark Beige (Alucobond - Driftwood Mica)
5B	Metal Panel	Light Beige (Alucobond, Oyster)
6B	Window Wall Mullions	Light Beige (Colour to match BM OC-30 Gray Mist)
7B	Face Mounted Powder-Coated Metal Railing	Light Beige (Colour to match BM OC-30 Gray Mist)



REVISIONS

NO.	DATE	DESCRIPTION
1	2023/10/20	50% DP Consultant Coordination
2	2023/12/06	Issued for Client Review
3	2024/05/06	80% DP Consultant Coordination
4	2024/08/12	DP Submission

HEATHER LANDS
 PARCEL B

DP SUBMISSION

B2 COURTYARD/ NORTH
 ELEVATION

DATE 6/10/2024 3:10:55 PM
 DRAWN BY Author
 CHECKED BY Checker
 SCALE As indicated
 JOB NUMBER 23013

A5.10

