



STREETCAR & THE ARBUTUS GREENWAY

Mike Anderson
Arbutus Greenway
City of Vancouver

What is Streetcar?



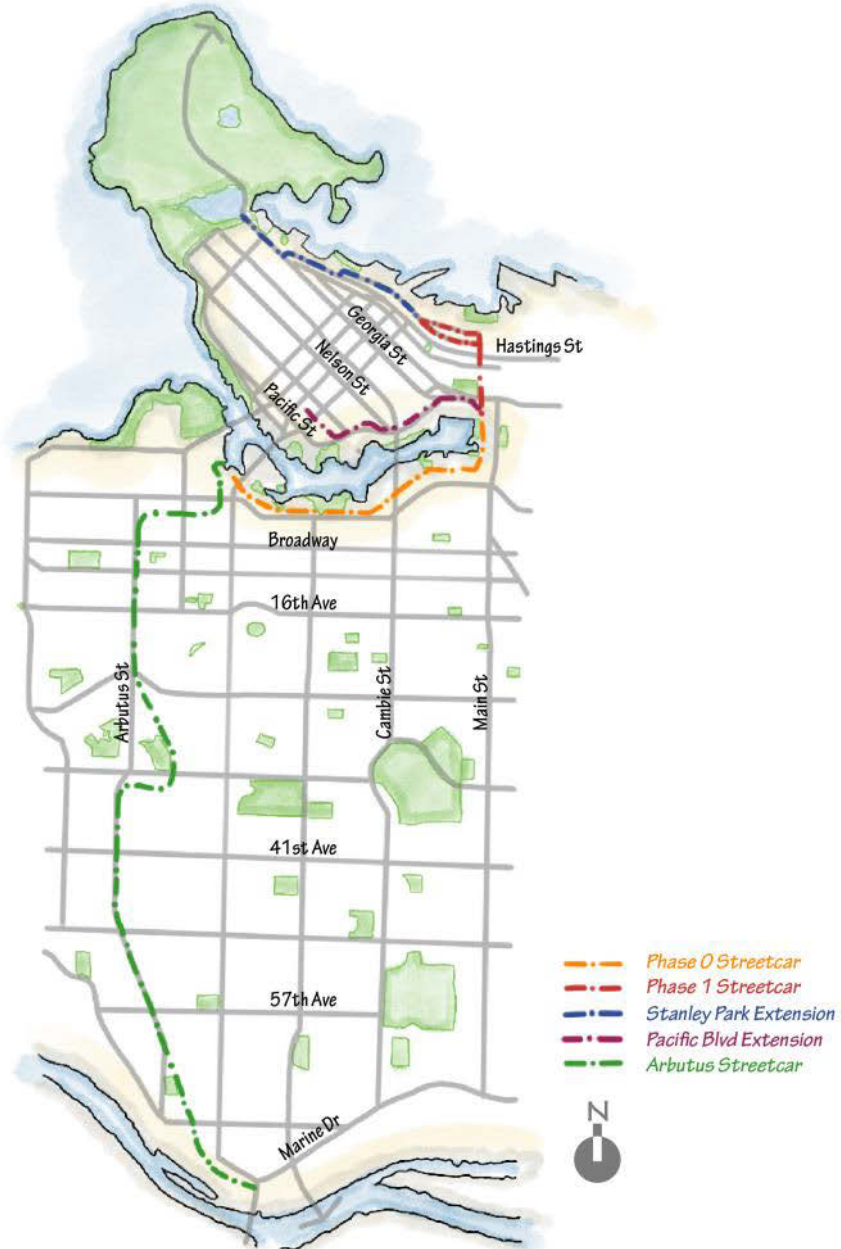
- Rail-based
- Typically single-unit, articulated vehicle
- Low-floor/accessible
- Electrified
- Human operator
- Stops 400-800 m apart

Why Streetcar?



- City Policy
- Purchase Agreement
- Capacity
- Comfort
- Compatibility

Part of a Future Network



West 1st Ave



West Hastings St



Surfacing

Embedded



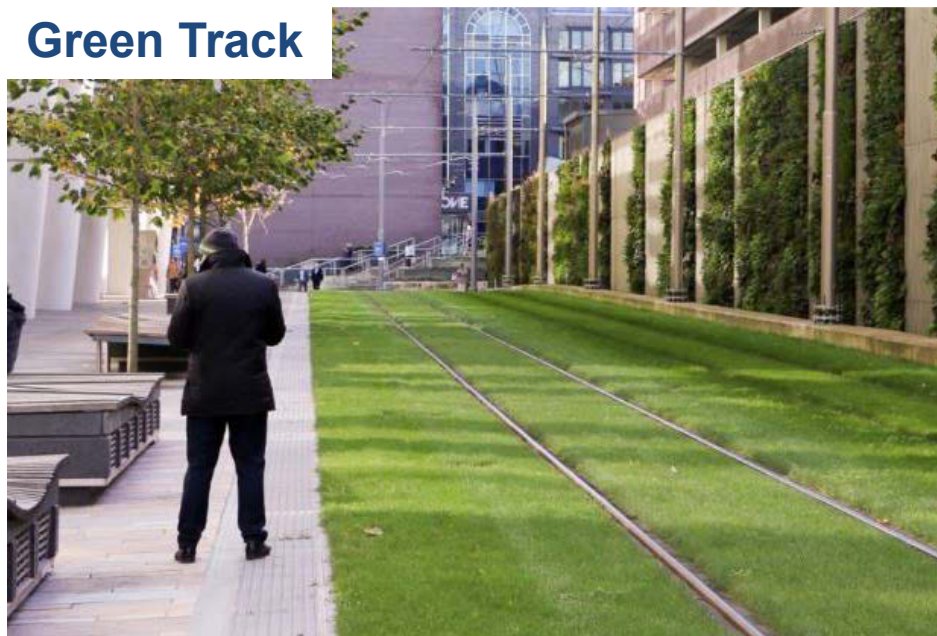
Ballasted



Direct Fixation



Green Track



Examples: segregated right-of-way

Munich



Dublin



Nottingham



Birmingham



Orléans



Examples: street-running

Sheffield



Tucson



Cincinnati



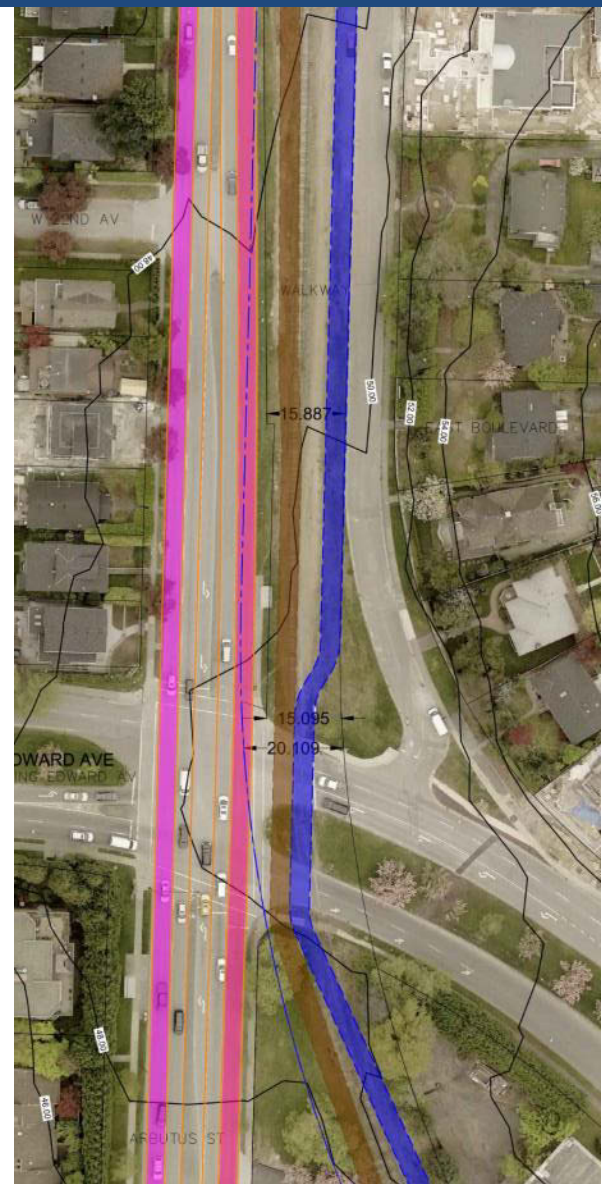
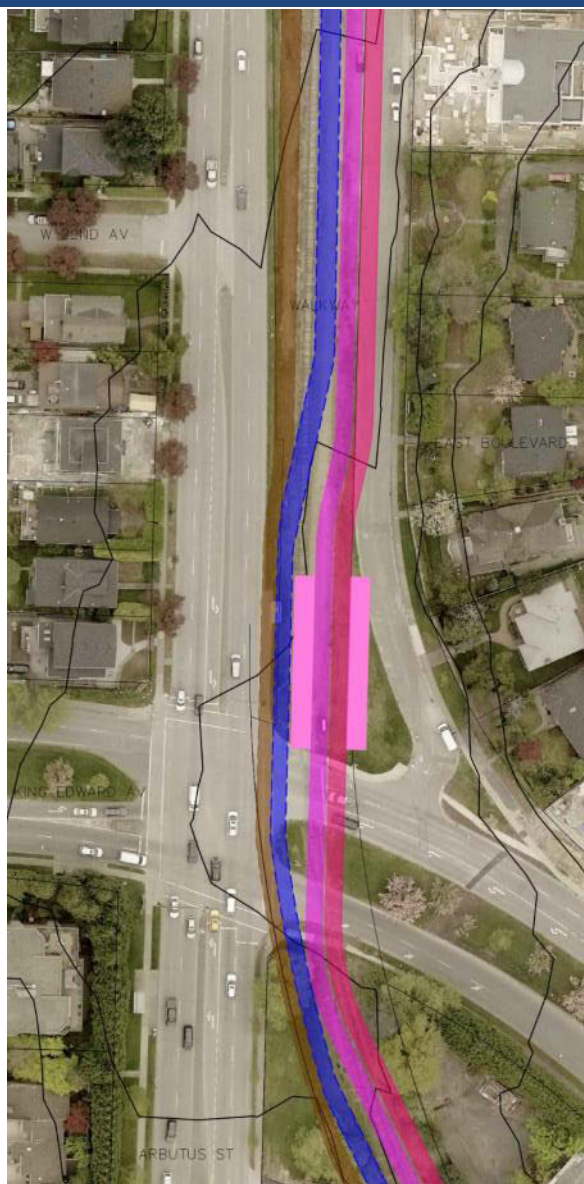
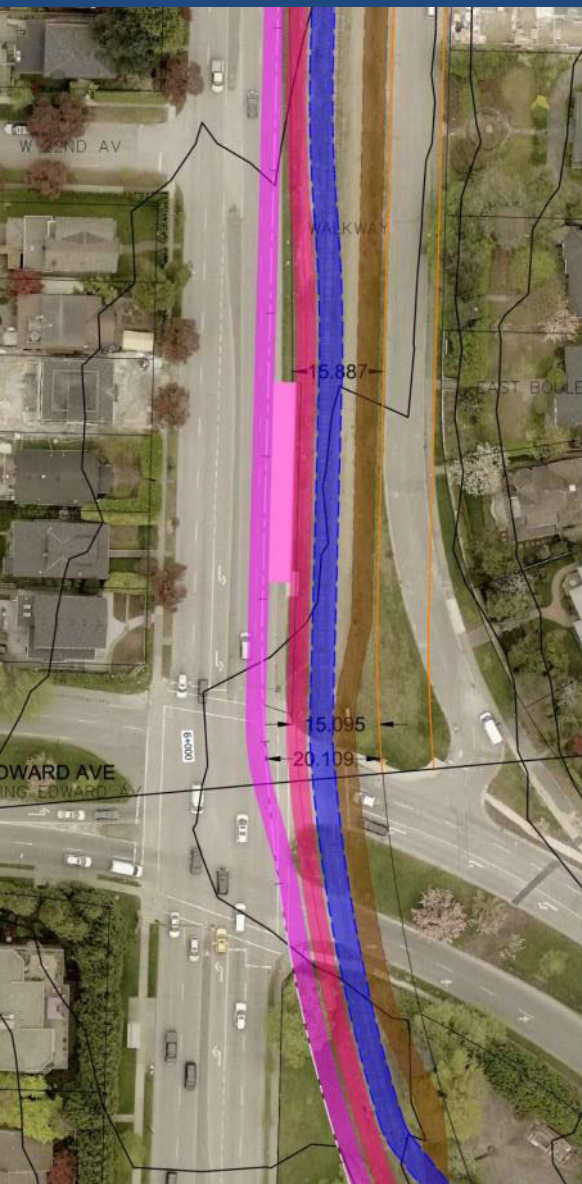
Seattle



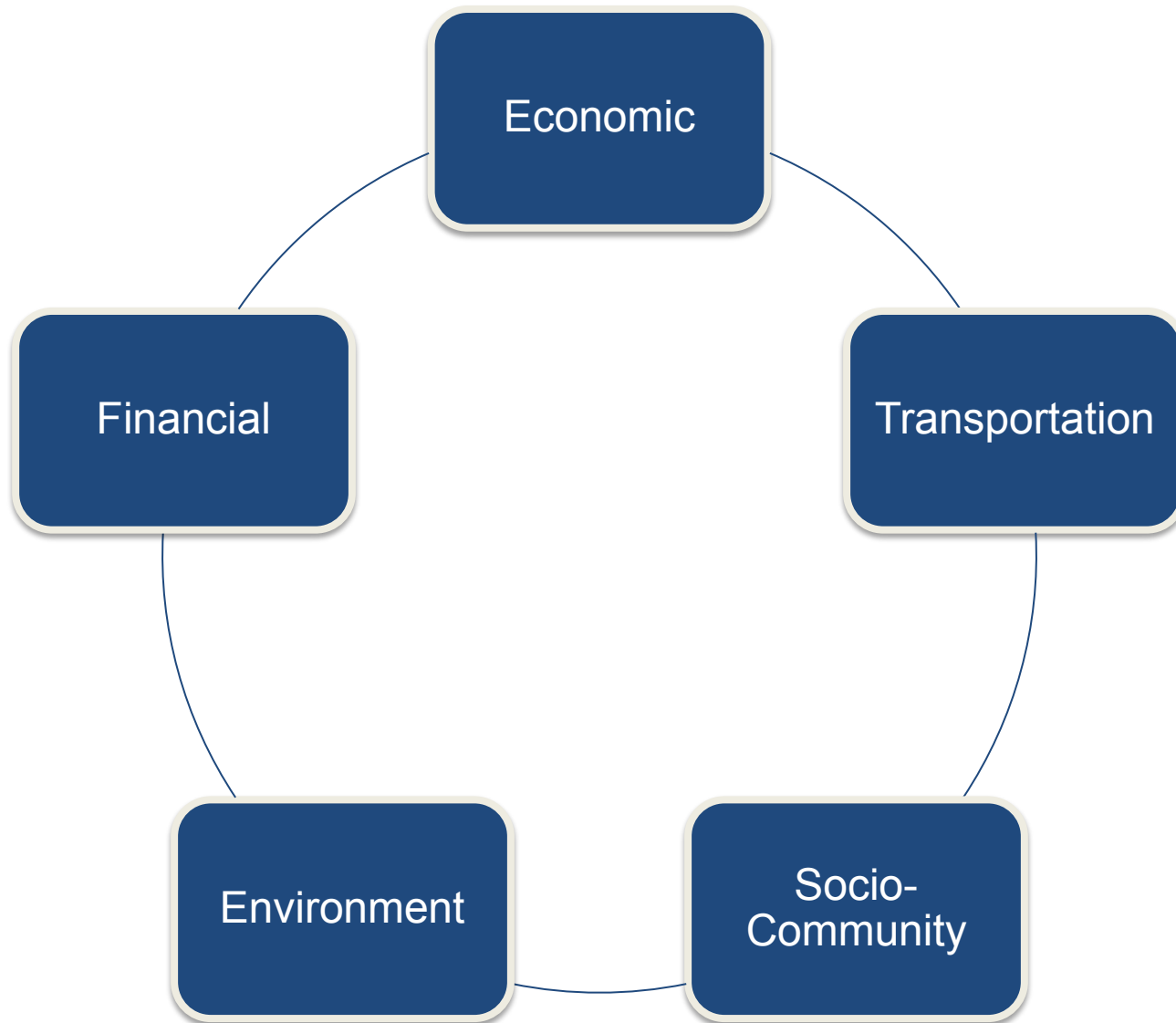
Seville



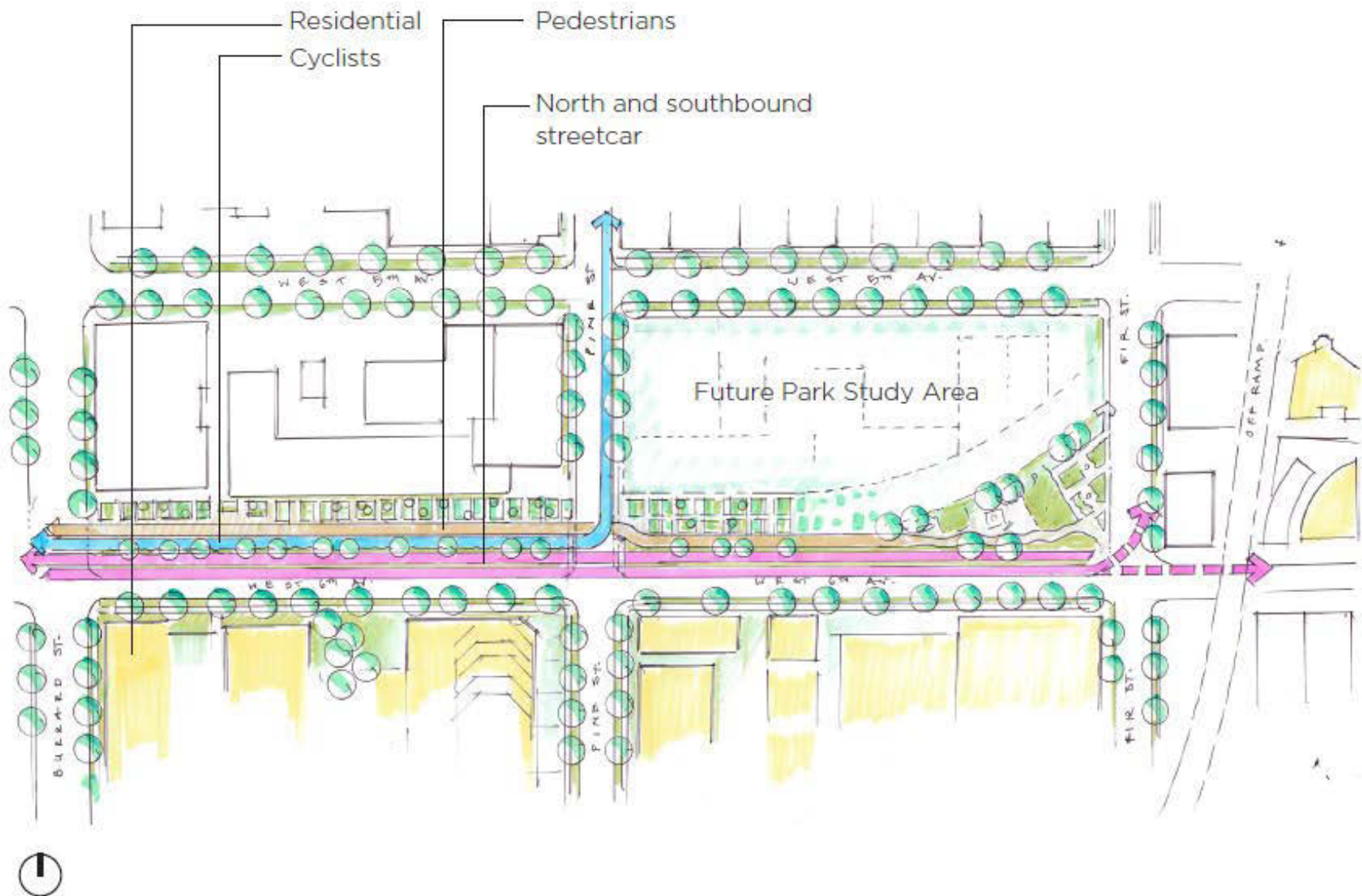
Alignment Concepts



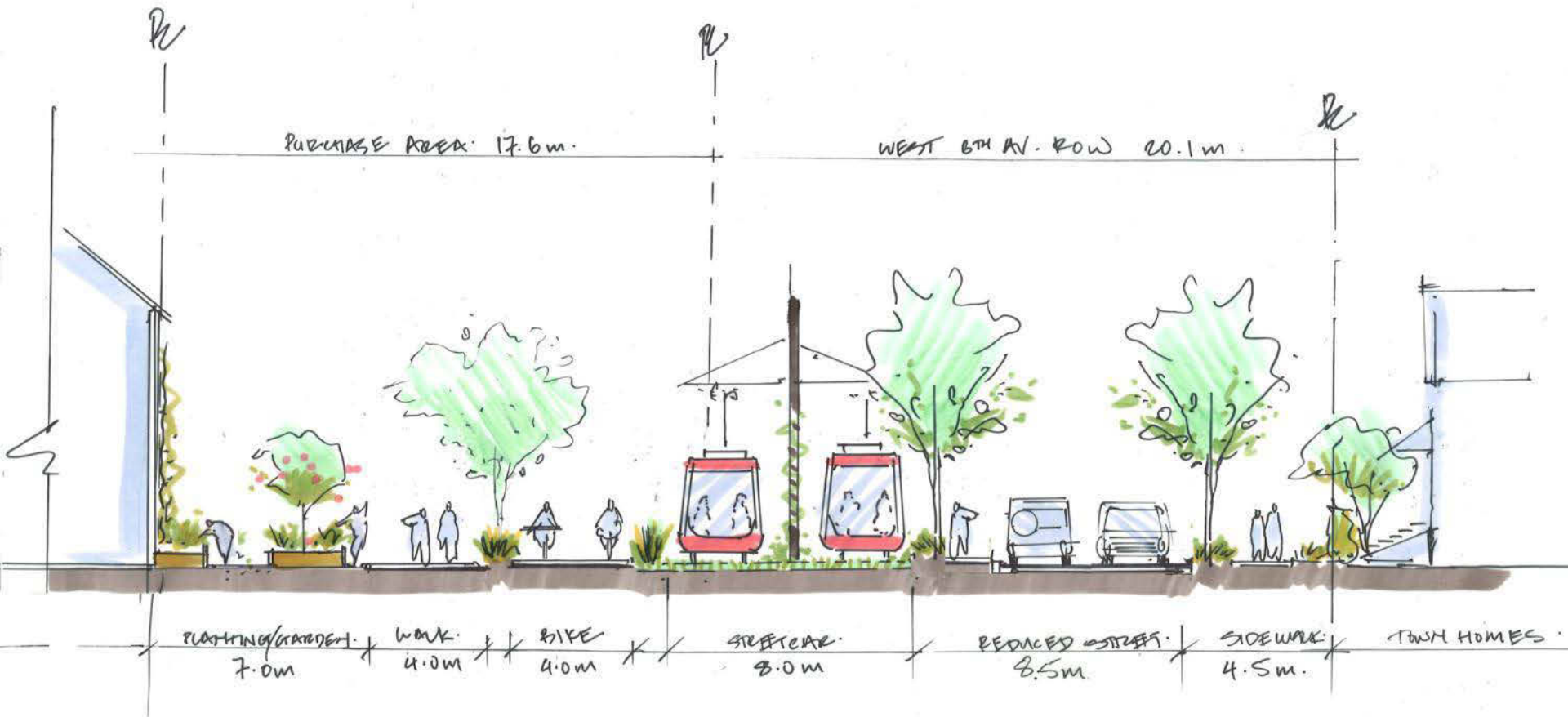
Identifying a Preferred Alignment



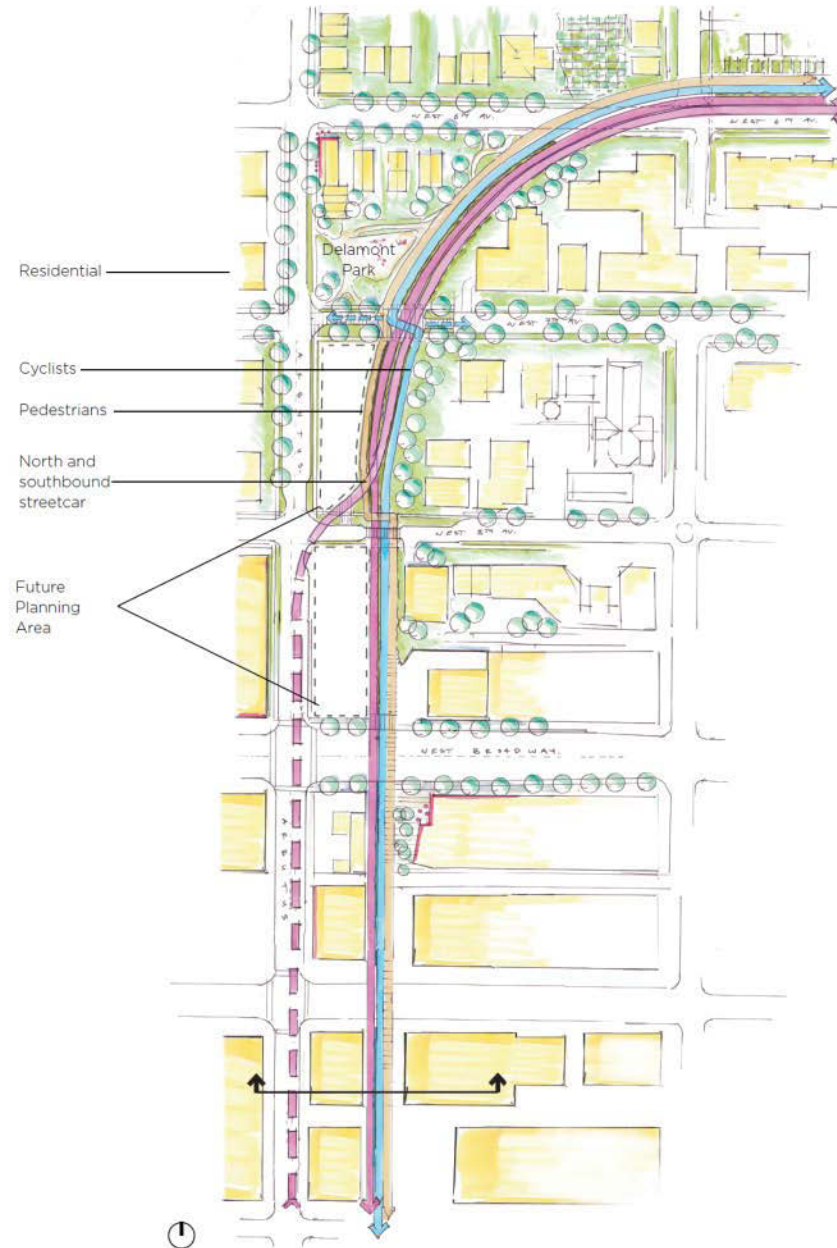
West 6th Avenue: Burrard Street to Fir Street



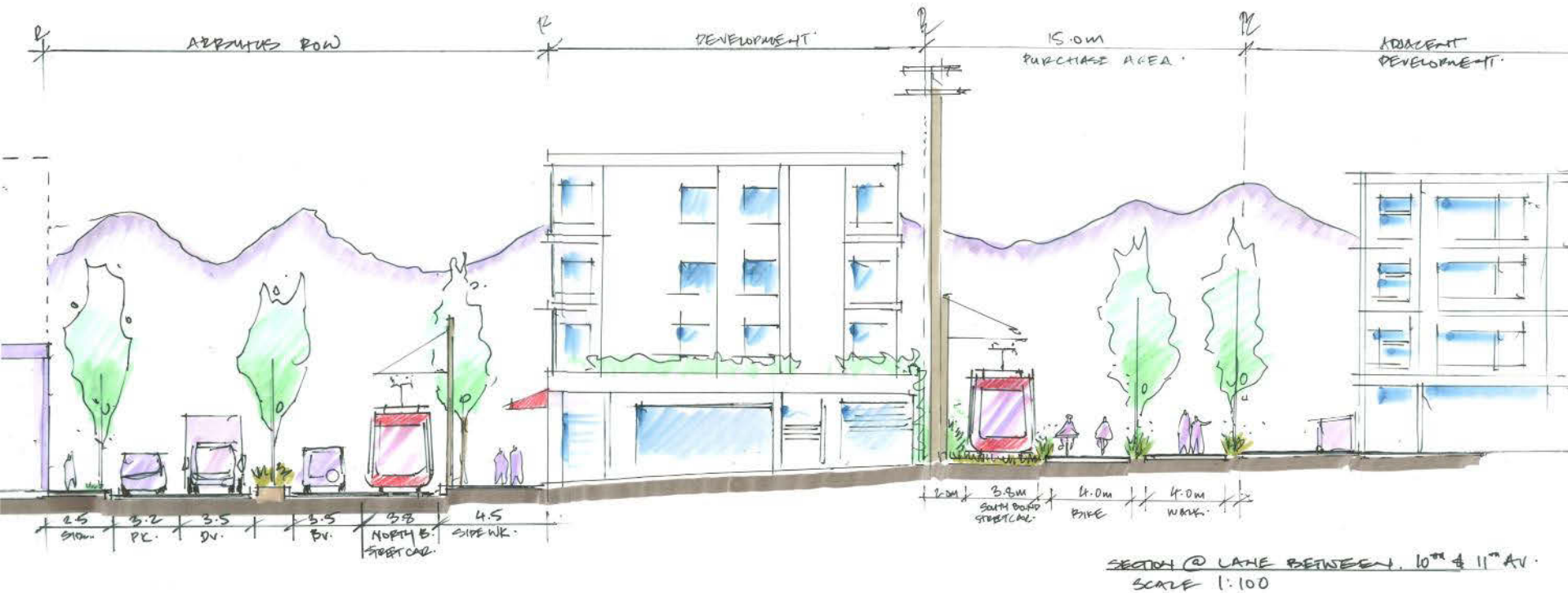
West 6th Avenue: Burrard Street to Fir Street



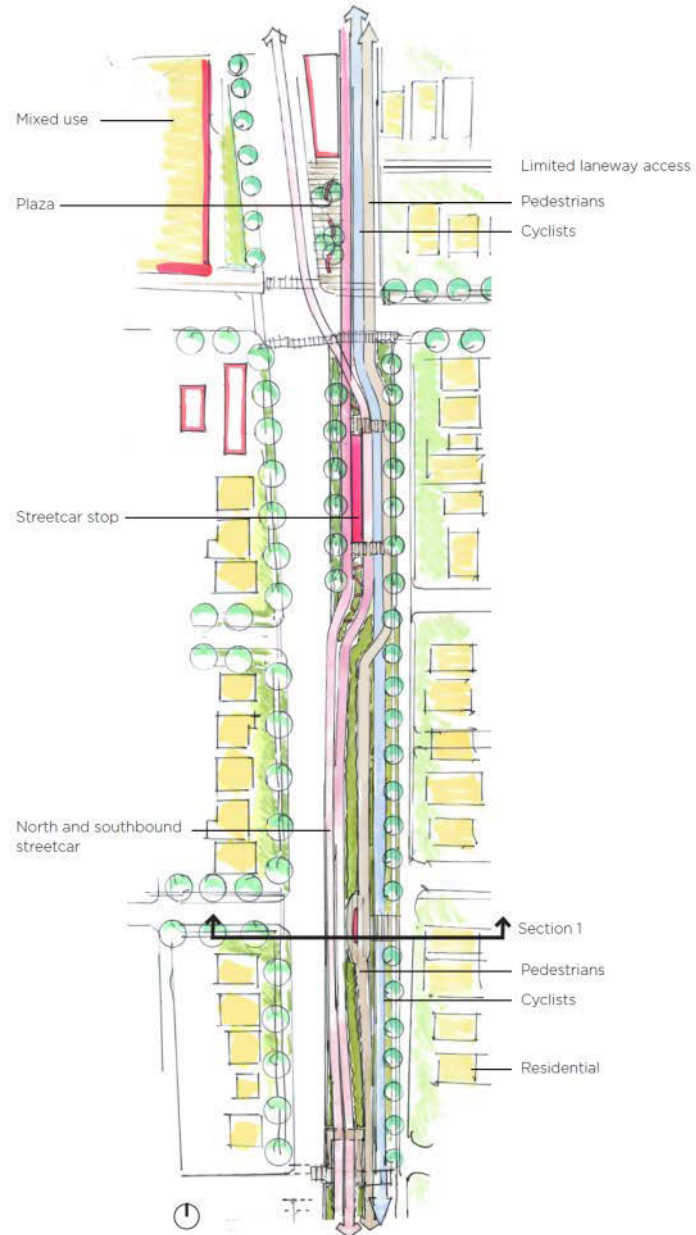
West 6th Avenue to West 11th Avenue



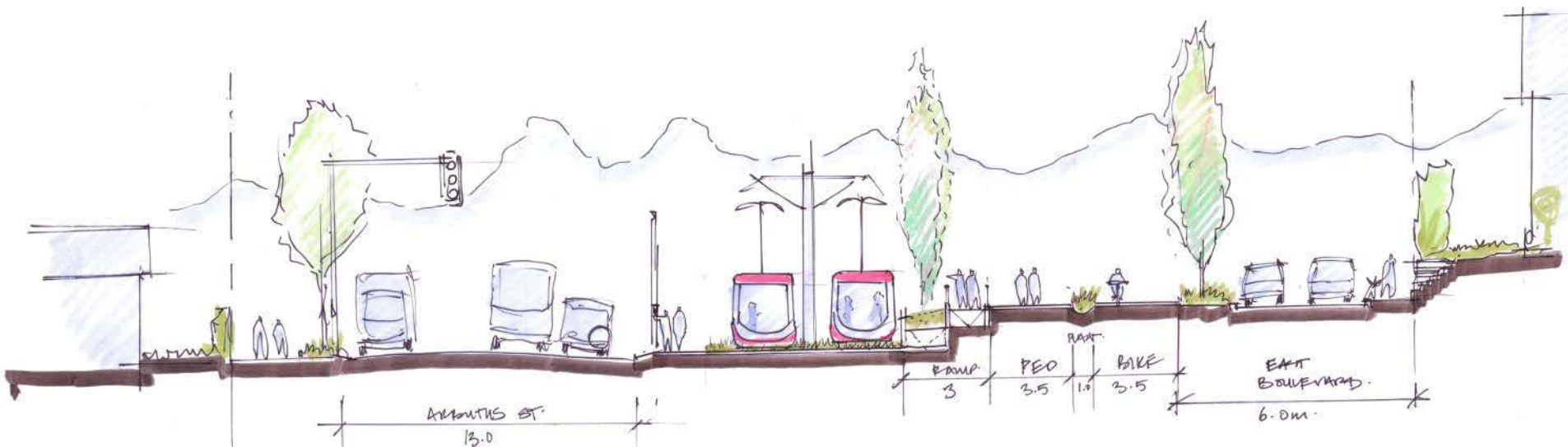
West 6th Avenue to West 11th Avenue



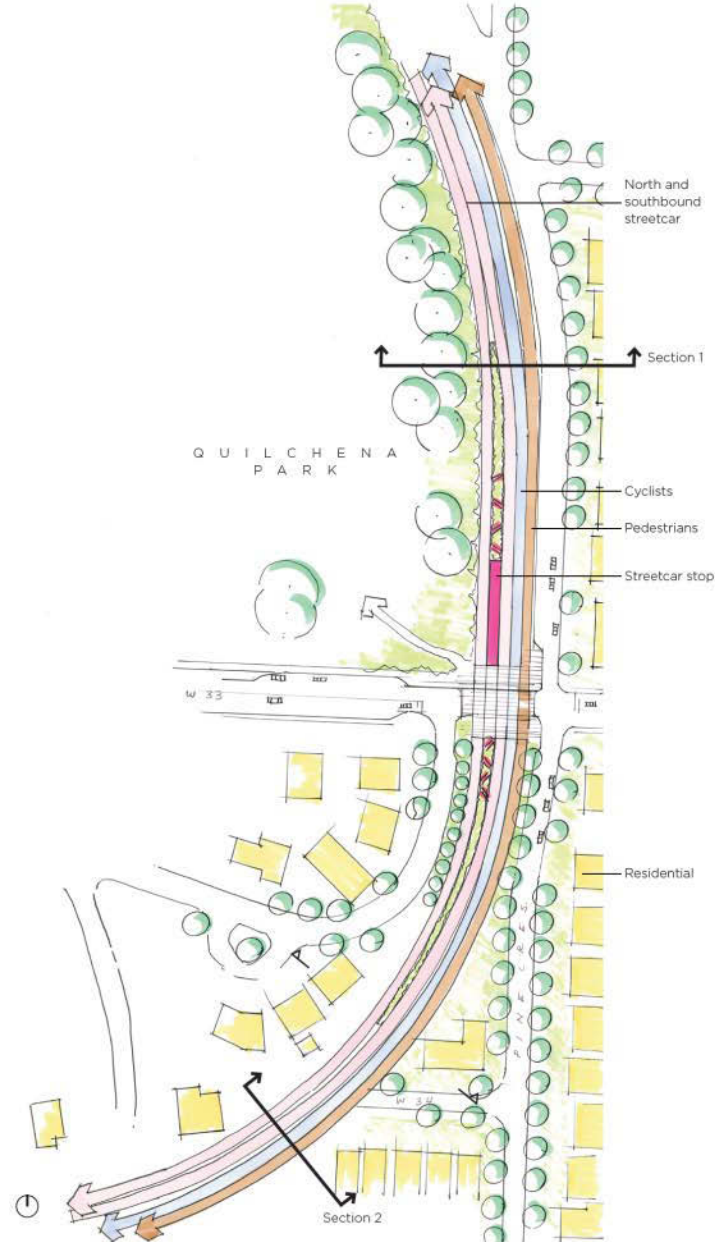
West 16th Avenue to West King Edward Avenue



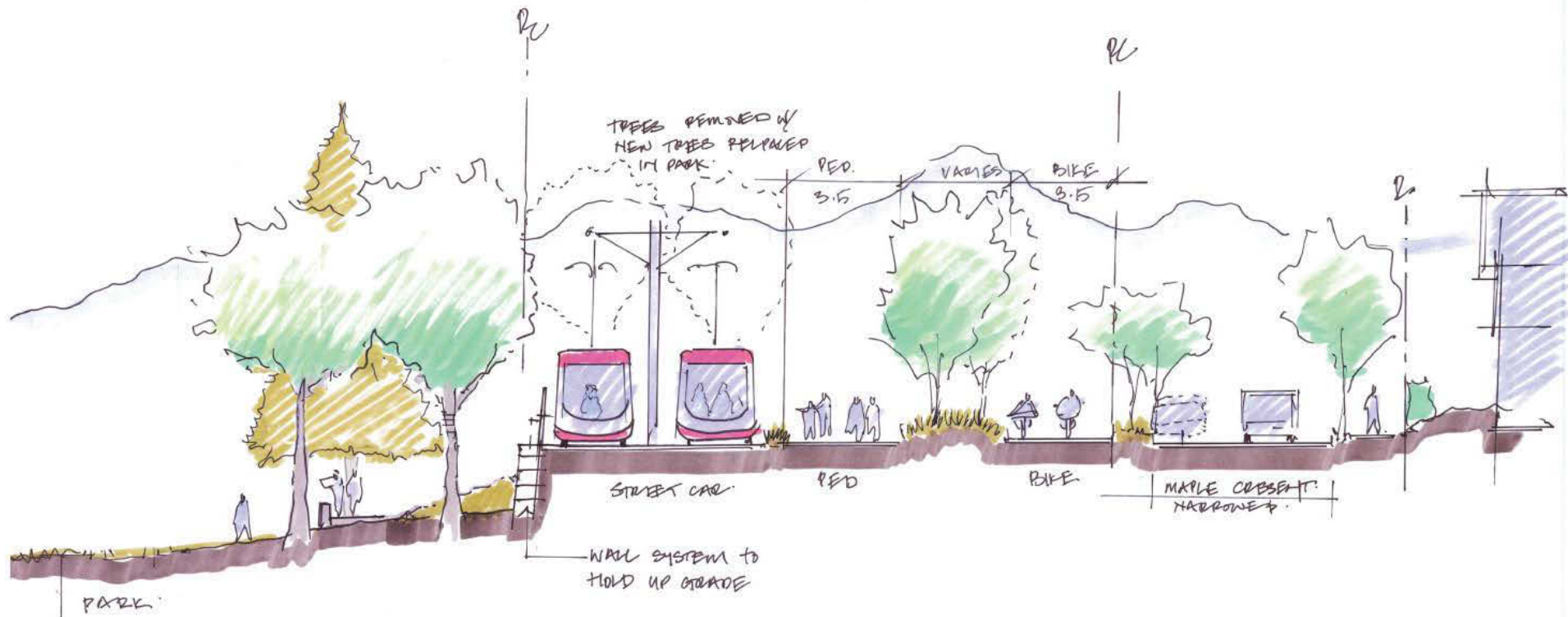
West 16th Avenue to West King Edward Avenue



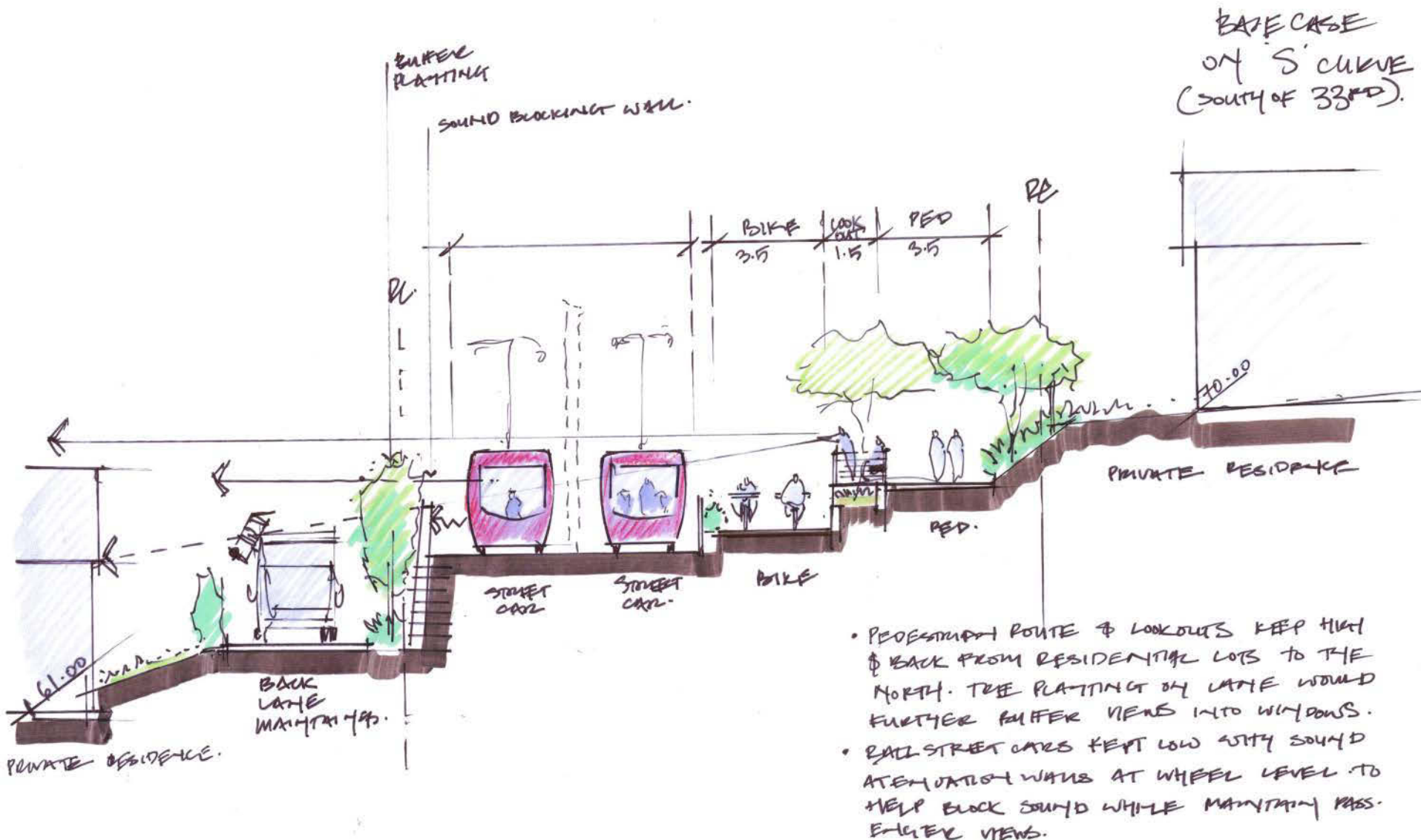
West 33rd Avenue and the 'S-Curve'

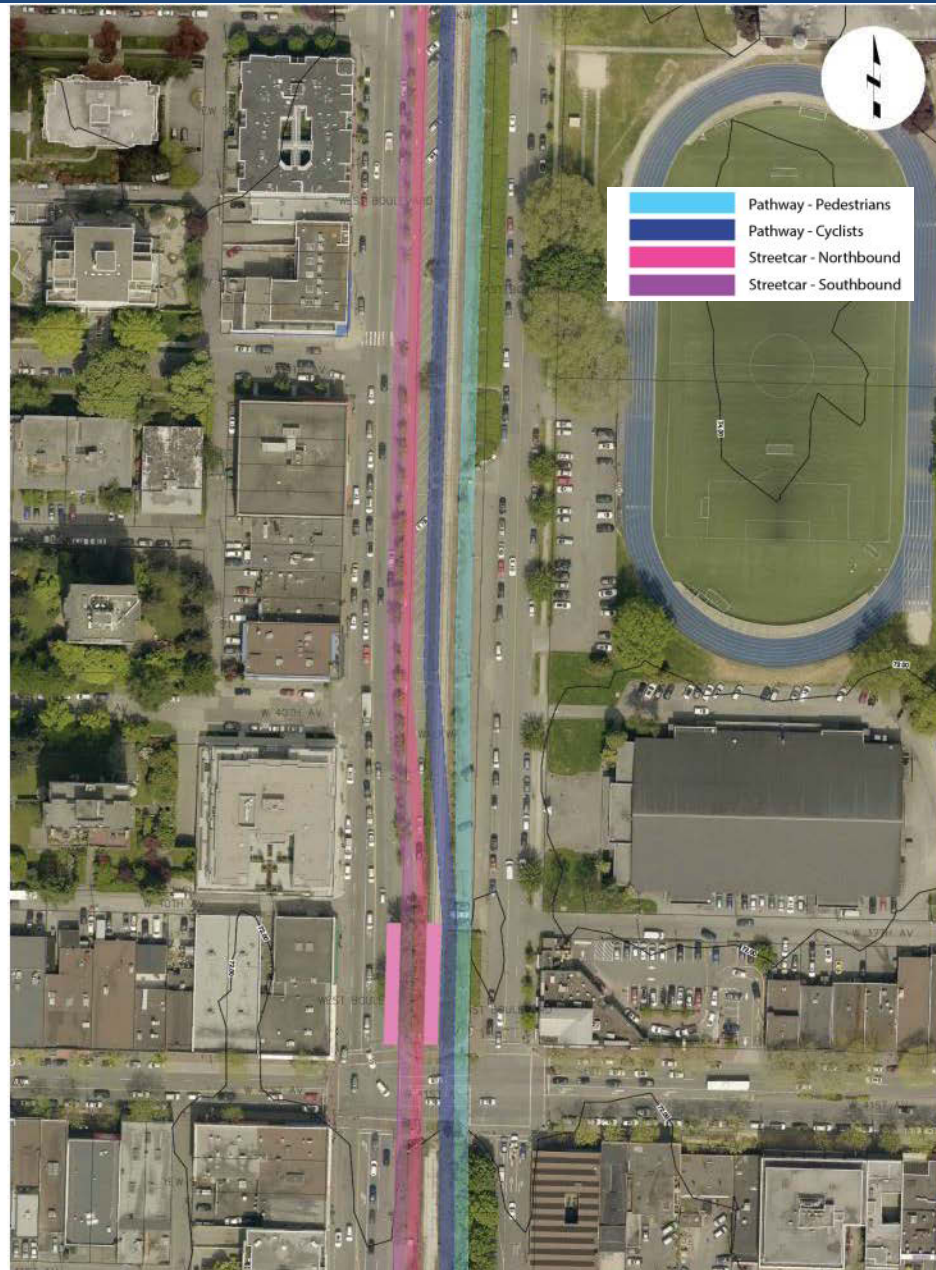


West 33rd Avenue and the 'S-Curve'

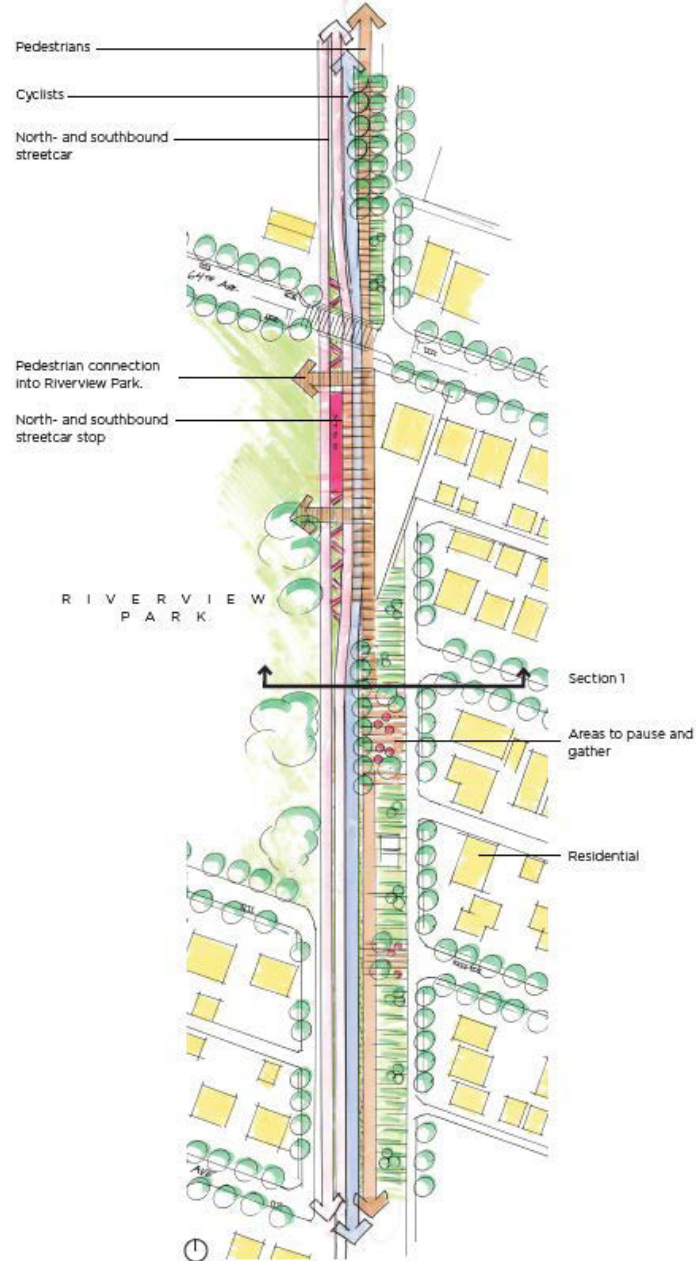


West 33rd Avenue and the 'S-Curve'

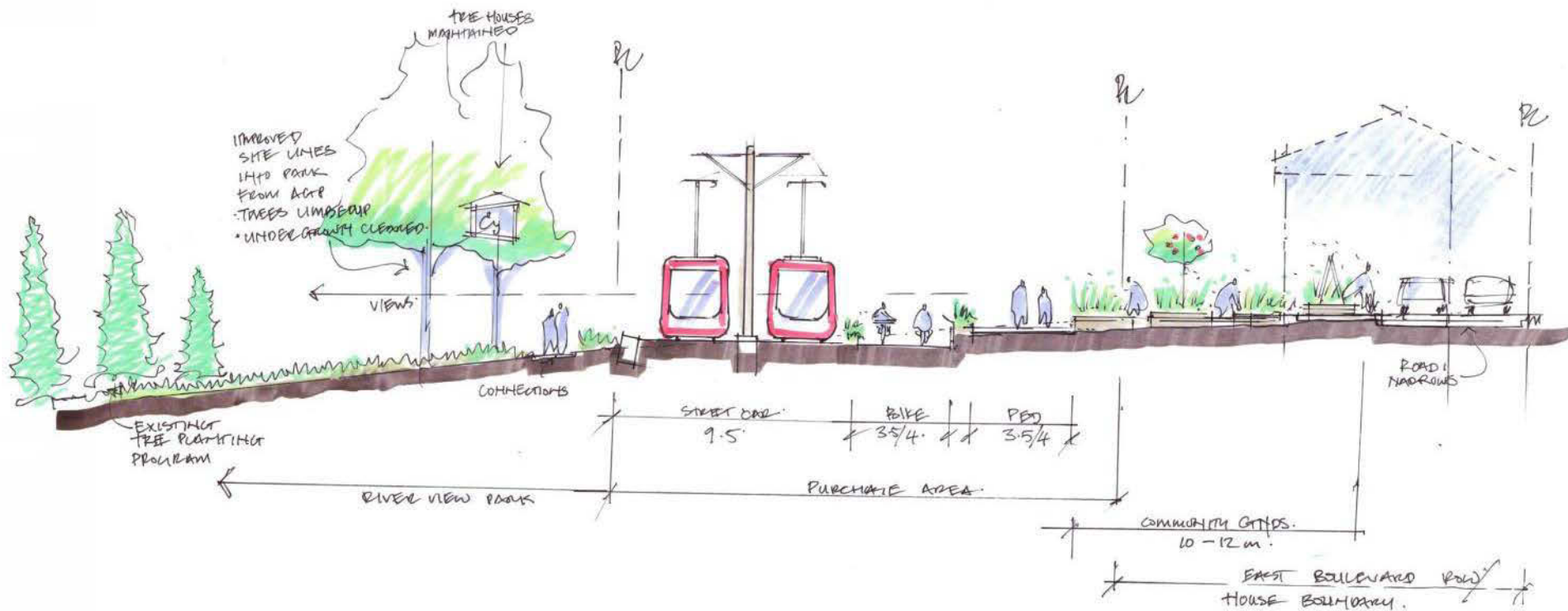




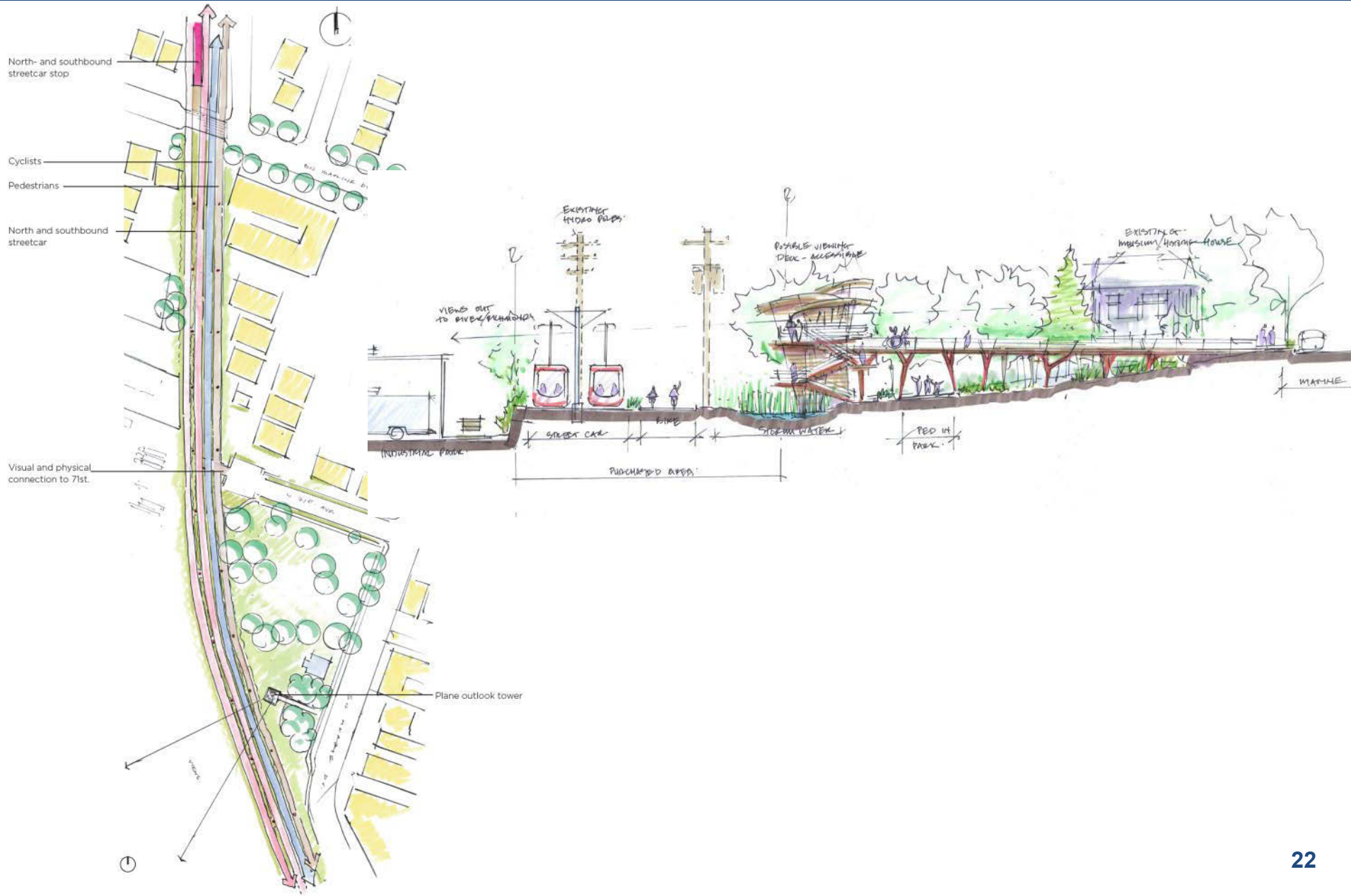
Riverview Park at West 64th Avenue



Riverview Park at West 64th Avenue



William Mackie Park and SW Marine Drive



A photograph of a park area with a paved path, utility poles, and trees. In the background, there are large mountains under a clear sky. A person in a blue jacket is walking on the path.

THANK YOU!