

WELCOME TO BREWERS PARK OPEN HOUSE

歡迎參加 Brewers Park 開放日活動

Chào Mừng đến buổi Khai Mạc Công Viên Brewers



PARK DETAILS

The Vancouver Park Board is developing a park renewal plan for Brewers Park to refurbish a well-used park and address the needs of a growing neighbourhood. The plan will review the usage and condition of existing park features, and identify priorities for park improvements.

Brewers Park currently consists of three terraced areas: a lower playing field; a mid section with tennis and sport courts; and an upper grassy area with playground, wading pool and tree-lined walkways.

TODAY'S GOALS

- 1: CONFIRM FEEDBACK**
Review feedback collected at Open House #1
- 2: PRESENT CONCEPTS**
Present two concepts for the park renewal
- 3: COLLECT COMMENTS**
Collect feedback regarding park preferences for key features such as the playground and the sport court

We want to hear from you!

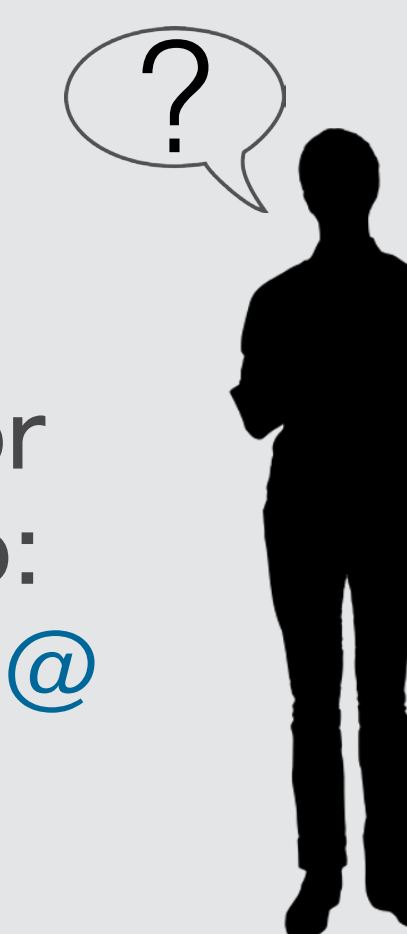
Please review the display boards and share your comments and ideas. We will use your input to further develop park concept plans you see today.

展示板副本備有中文版本，如有需要請向職員索取。

Các bảng này có in sẵn bằng tiếng Việt. Vui lòng liên hệ nhân viên để lấy một bản.

Questions?

Speak to staff tonight or email your questions to:
alexandre.man-bourdon@vancouver.ca



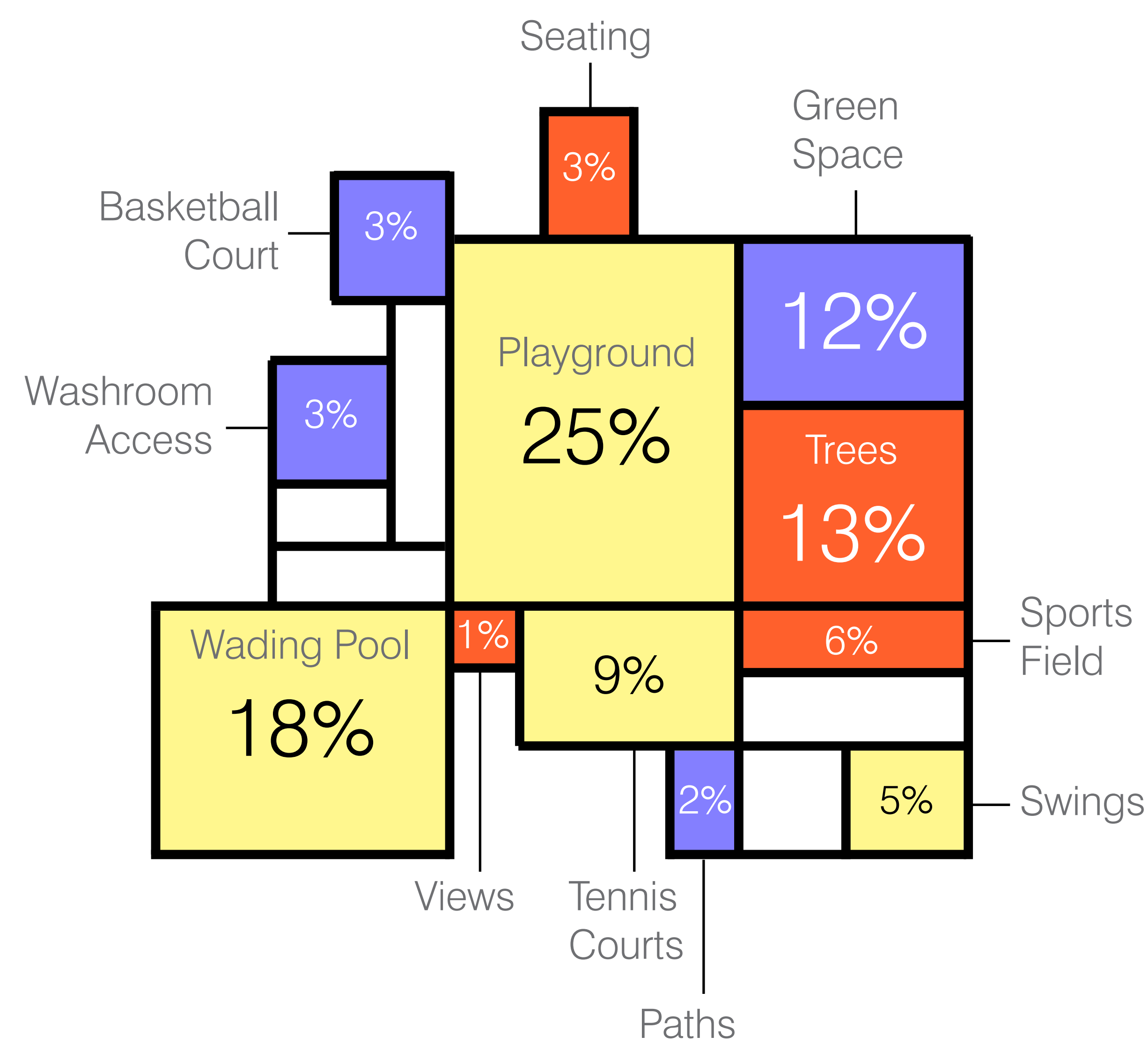
Prefer to fill out the survey online?

Please fill out the feedback form, tonight, or online at:
vancouver.ca/brewerspark

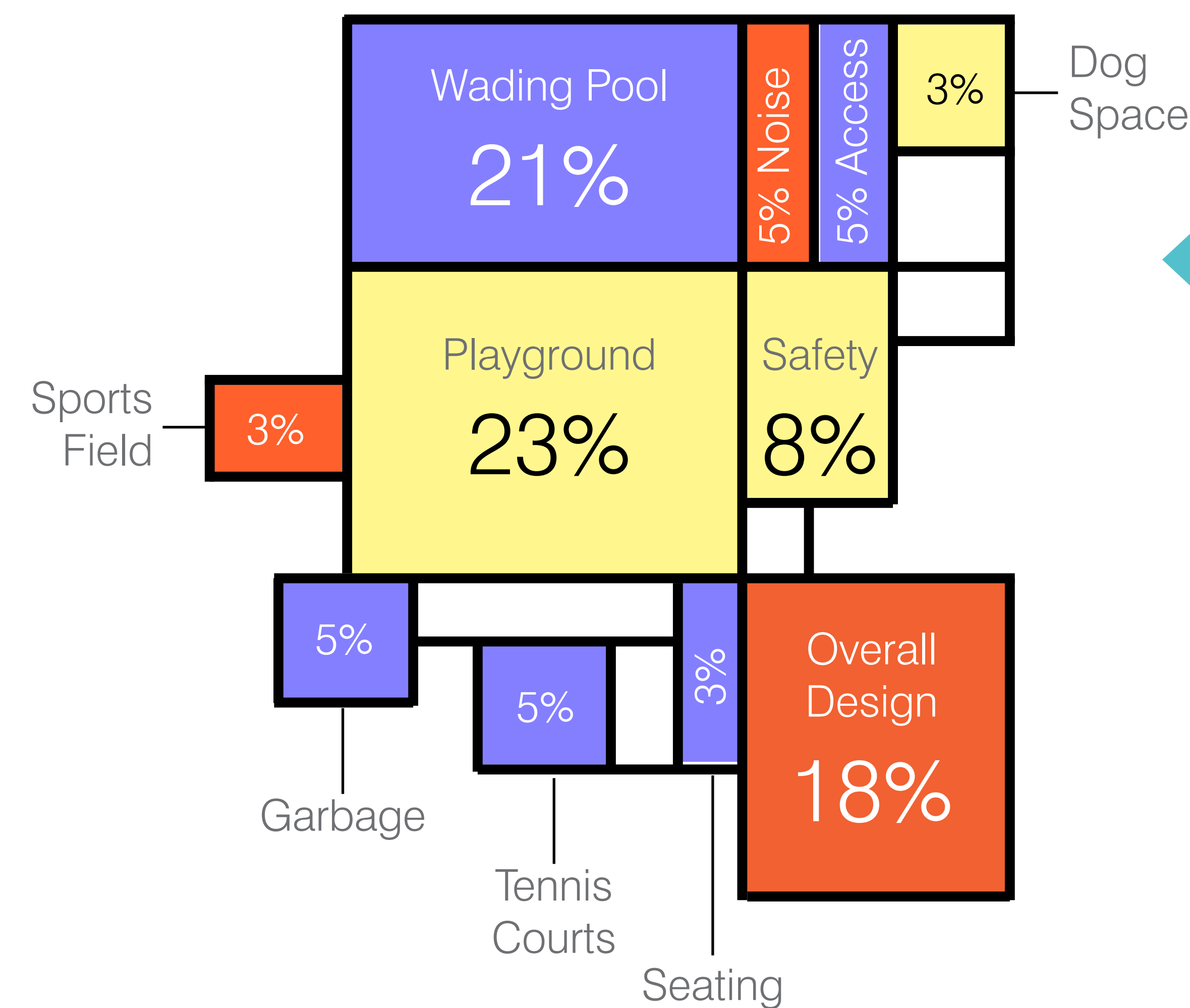
WHAT WE HEARD



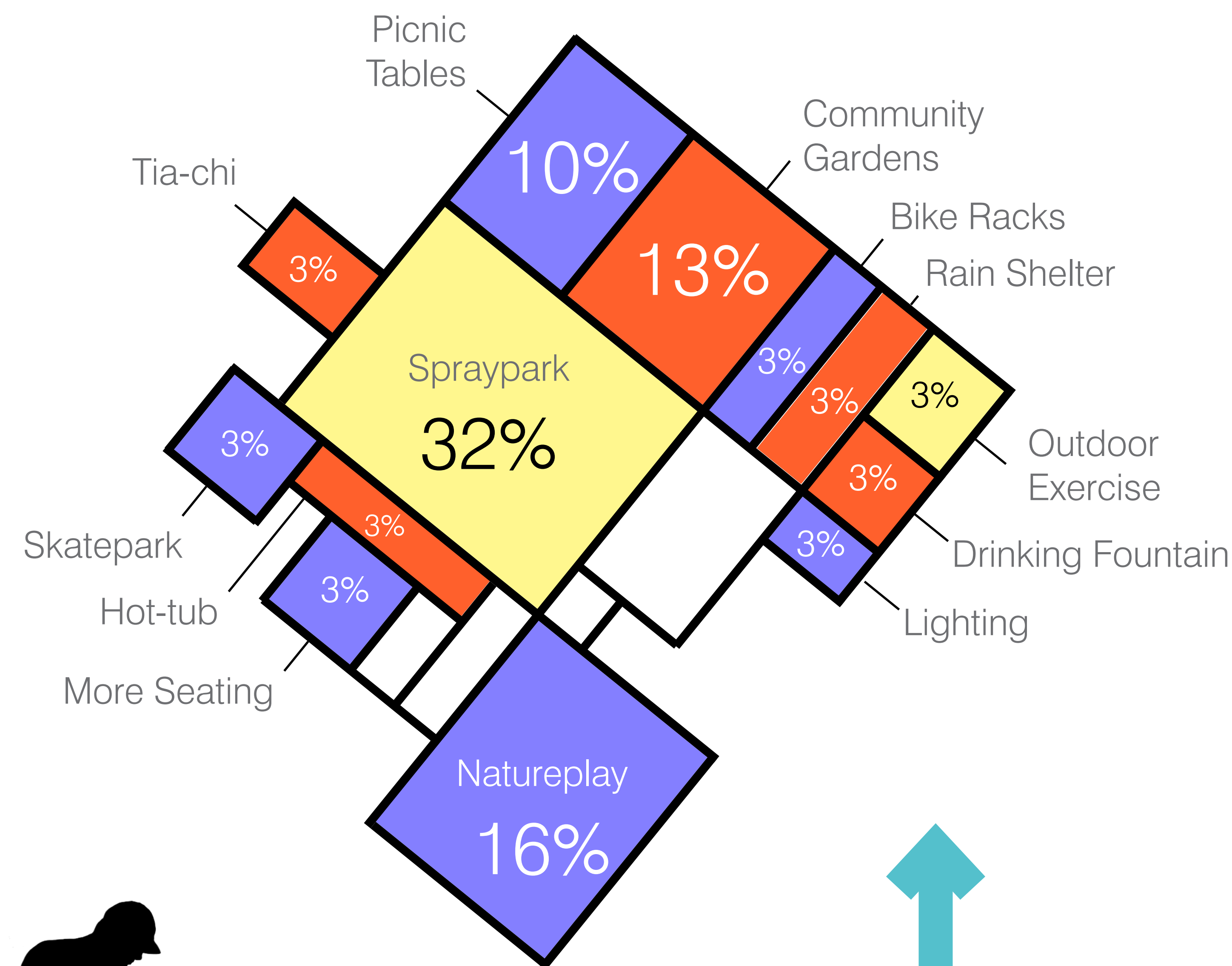
The following information is based on the survey response from September 2016:



Survey response to: "Identify 3 of your favourite existing features"



Survey response to: "What existing park elements need the most improvement"



Survey response to: "What new features would you like to see in the park"

Development of Goals and Objectives

Feedback collected at the first open house has shaped overall project goals and objectives. Existing conditions that require thorough consideration include:

- Addressing the absence of universally accessible grades
- Need for 'flow' and connection through the park's three primary terraces

GOALS

1. Create accessible and visible space
2. Enhance community interest and use in the park
3. Offer a variety of uses
4. Offer programmable open spaces for Cedar Cottage House and extended community groups
5. Connect all areas of the park

OBJECTIVES

1. Maintain existing points of access
2. Provide universally accessible grades at entry points by adding ramps and gently sloped pathways
3. Add seating opportunities in the park
4. Address safety concerns throughout the park
5. Enhance shade area, while preserving existing healthy trees
6. Preserve the tennis courts, with added opportunities (basketball, pickleball, etc)
7. Provide various opportunities for combined playground/playscape in a central area, with clear delineation for toddler ages through youth ages
8. Provide a variety of seating locations (tables, benches) and central open lawn space for seating
9. Provide mixed flex zone for splash elements, Tia-chi, and social gathering (i.e. outdoor classroom)
9. Capitalize views of the city skyline and mountains

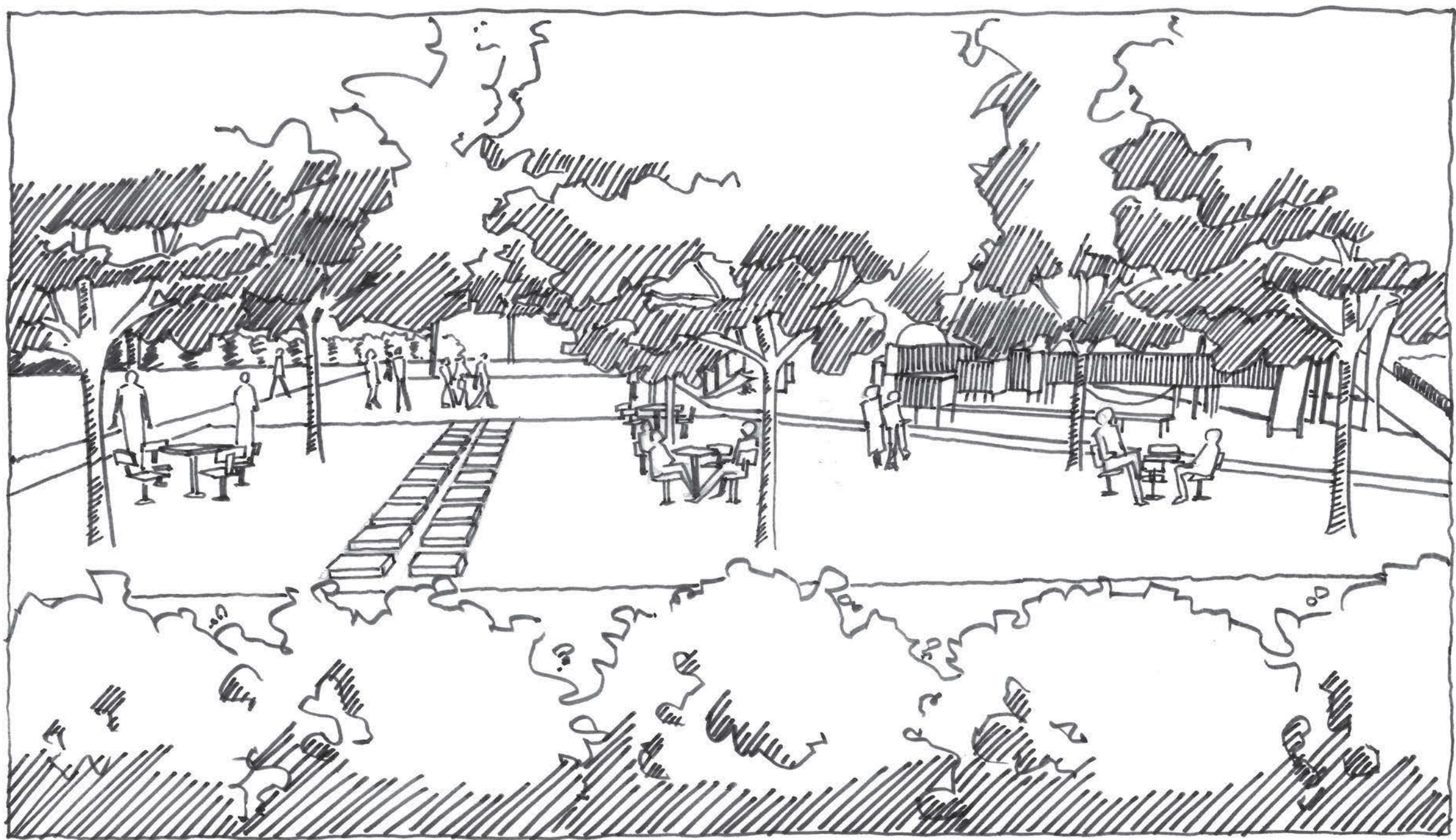
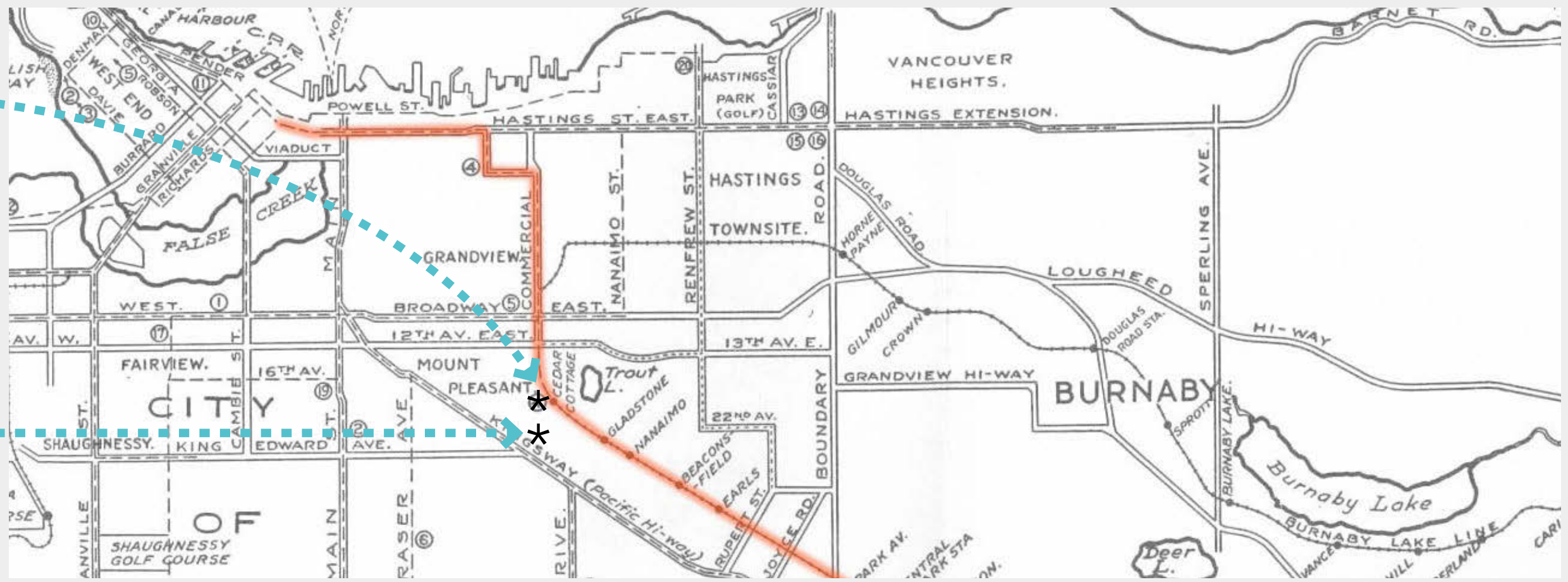
CONCEPT ONE: INSPIRED BY THE KINGSWAY CORRIDOR

Description

The development of the Kingsway corridor had a strong impact on Vancouver's history. The "Interurban Line" was originally a rail-car service that crossed through Vancouver along Kingsway. One of the most famous stops on the line was "Cedar Cottage", located at the bend in the line. The InterUrban Line created a dynamic splice through the City that connected several neighbourhoods. This form inspired the first concept shown below.

Location of the famous
"Cedar Cottage" stop
on the InterUrban Line

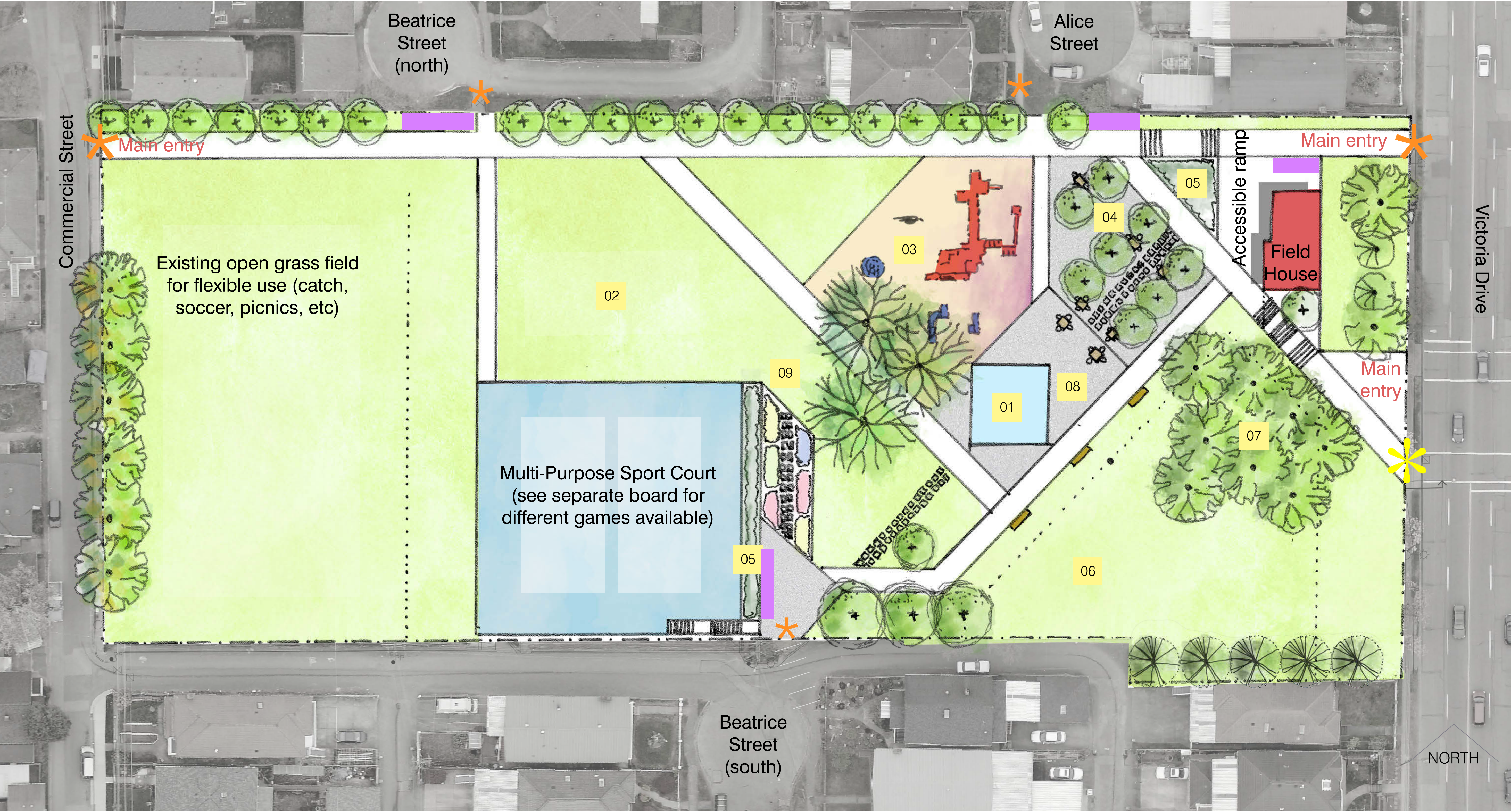
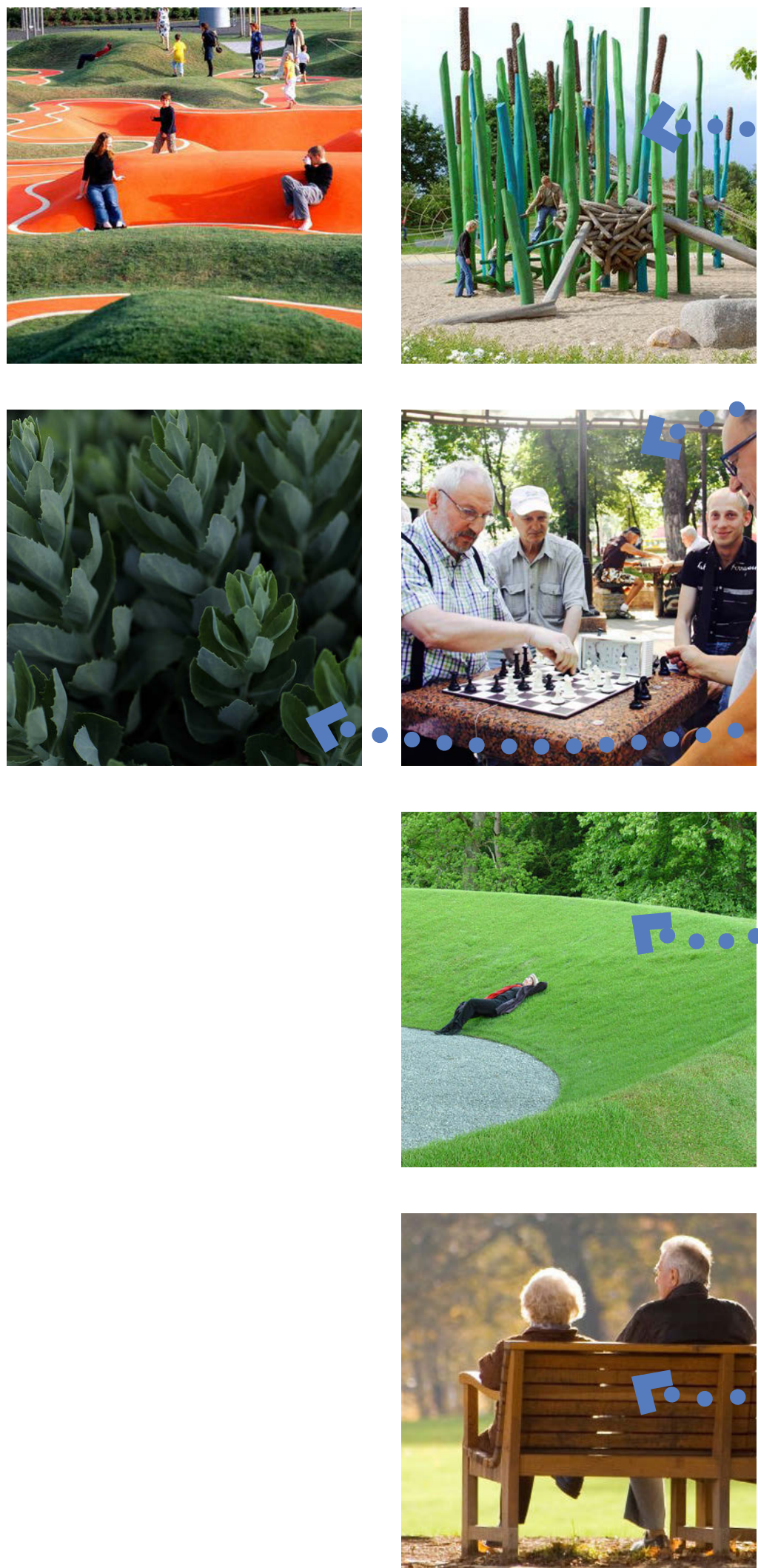
Brewers Park
Location



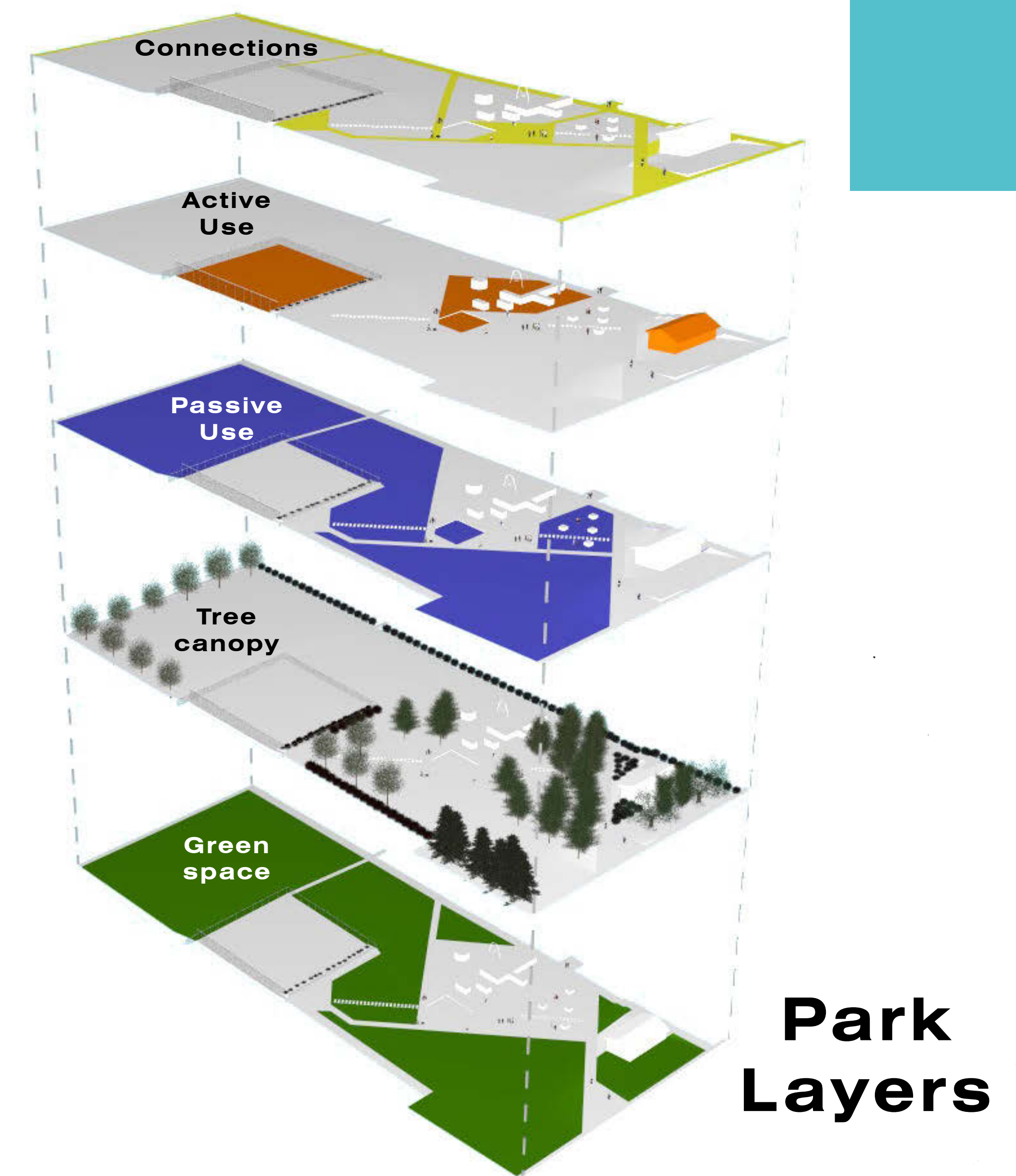
Perspective 'A'
View looking across tree grove

Key Plan

- 01 Tia-Chi Plaza and Ground Spray Plaza
 - 02 Open barbecue area with flat grass for Volleyball and grass games
 - 03 Main playground with large features and natureplay
 - 04 Tree grove with seating and games tables
 - 05 Buffer plantings at low height for safety
 - 06 Viewing berm looks at north shore mountains and city skyline
 - 07 Existing tree grove to remain protected
 - 08 Main gathering space with seating
 - 09 Optional community garden bed
- ★ Accessible entry
■ Bike parking



CONCEPT ONE: PERSPECTIVES AND COMPOSITION



Field remains for flexible use (picnics, catch, etc.)



Open plaza for Tia-Chi and gathering use. Spray elements are subject to VanSplash (see final board)



Playground with a variety of equipment and interactive elements

Tree grove with games tables



See sport court board for information on sport opportunities

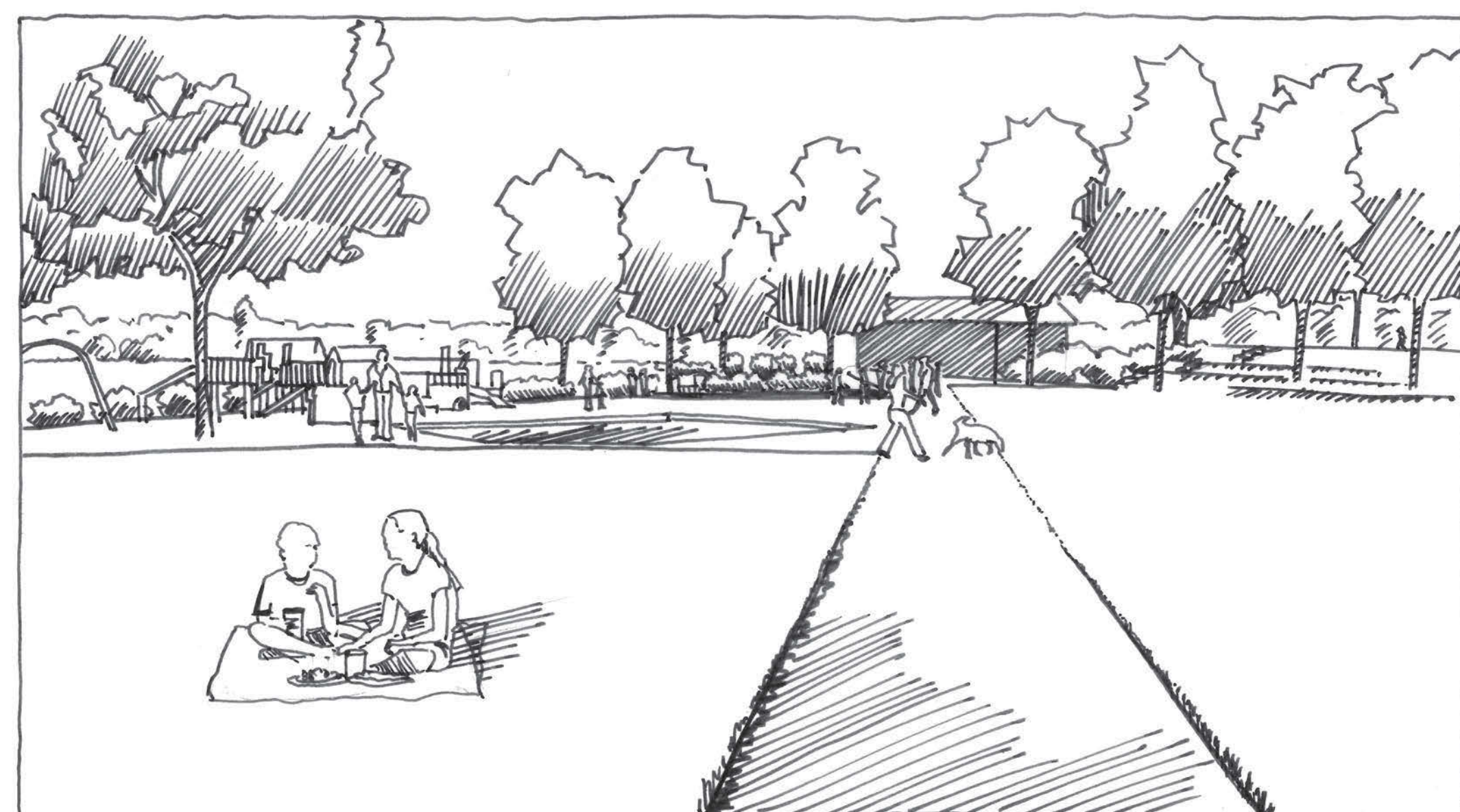


Entry from Beatrice Street

Entry from Alice Street

Main entry (ramped)

Open seating lawn overlooks playground and park, embracing views of the city skyline



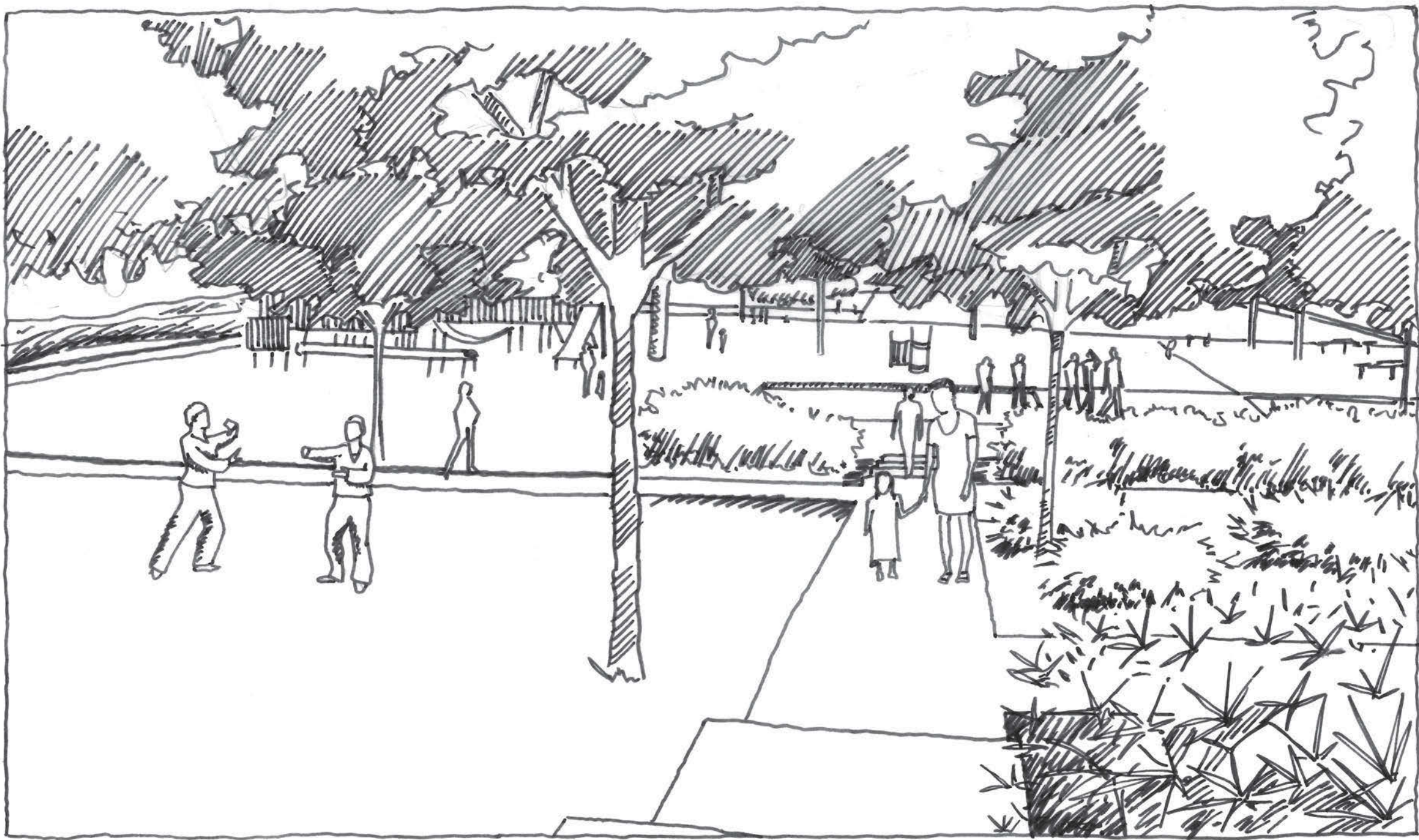
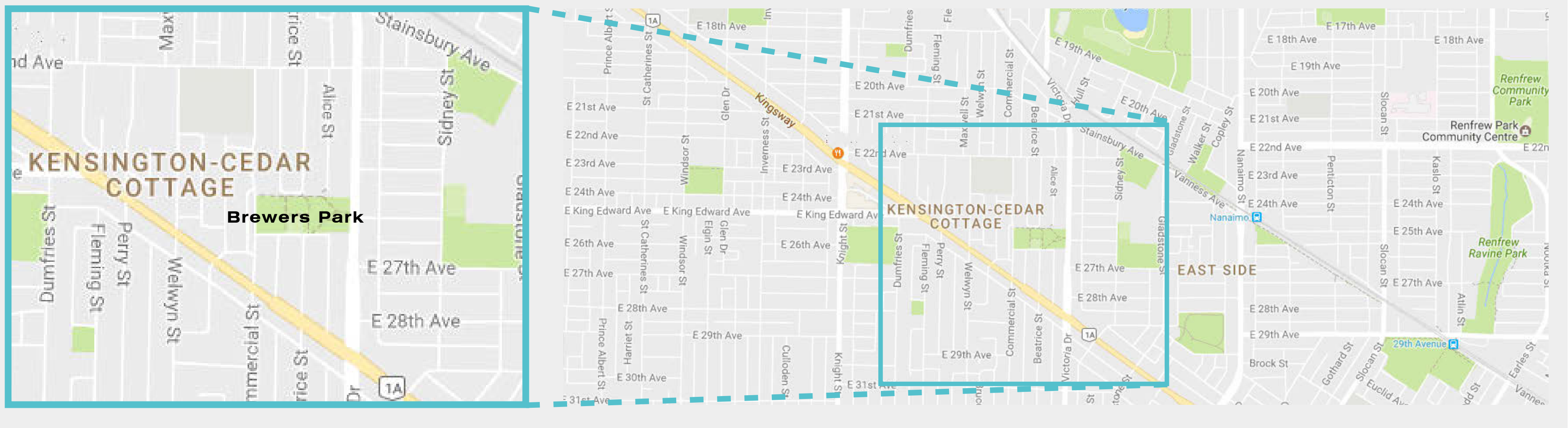
Perspective 'B'

View looking towards the existing park building

CONCEPT TWO: INSPIRED BY COMMUNITY CONNECTION

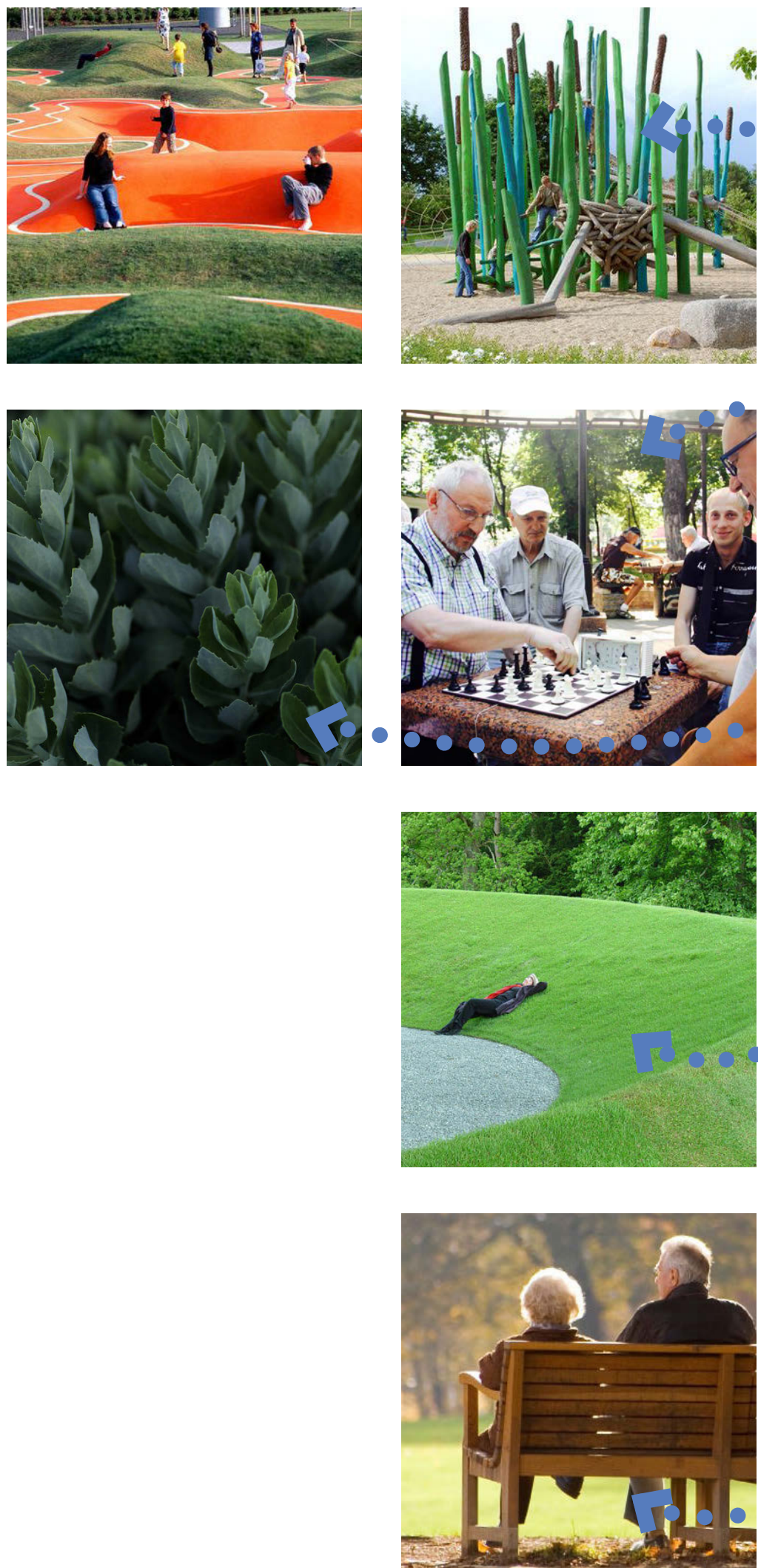
Description

Brewers Park was developed through the 1950's when the Kensington-Cedar Cottage Community experienced high growth. The park connects several core North-South residential streets. These streets connect residents, and families walking to the numerous schools and additional amenities within the area. This concept was developed using each North-South entry and exit as a primary focus for pathway layout.



Perspective 'A'
View looking towards the main plaza

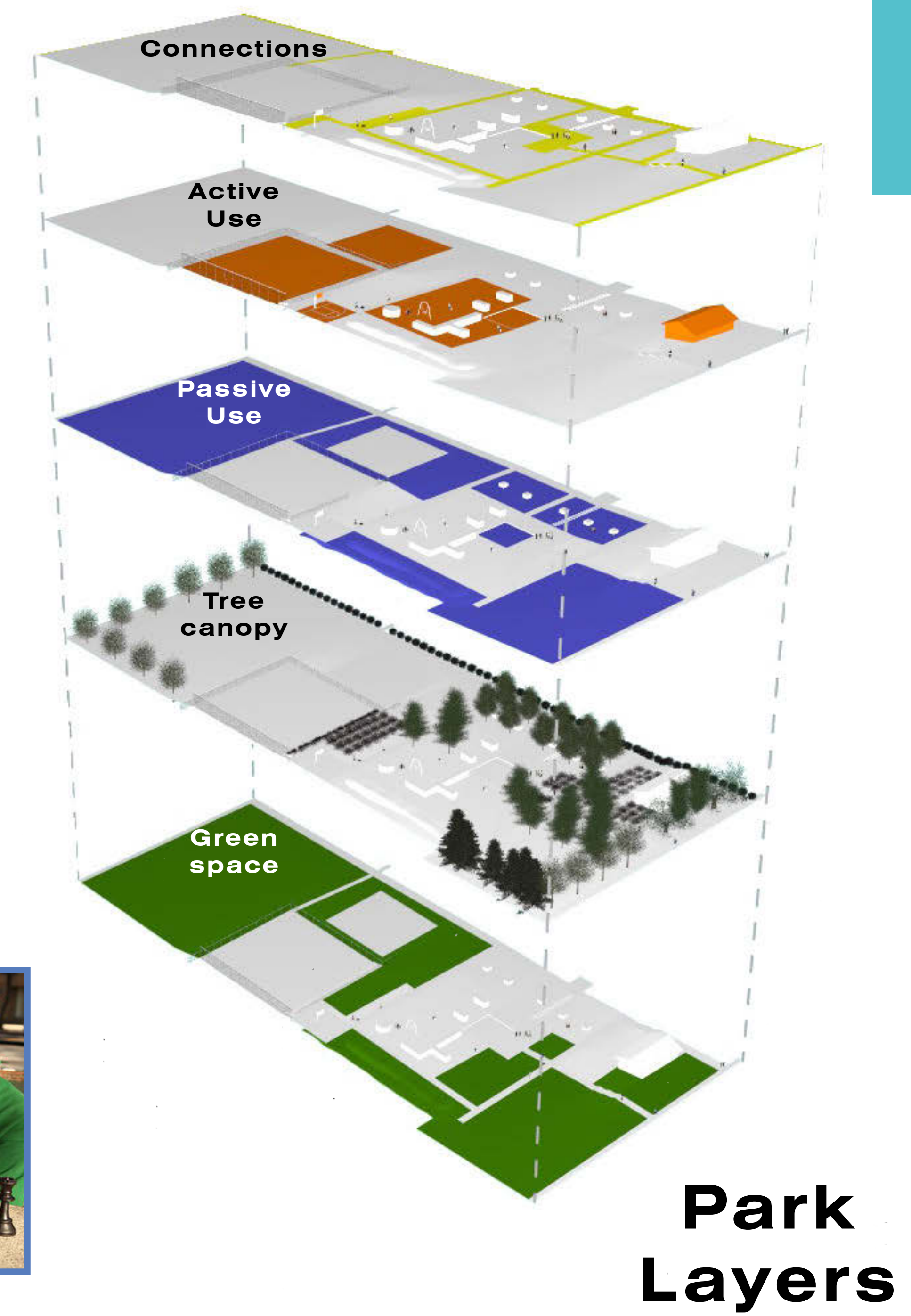
Key Plan



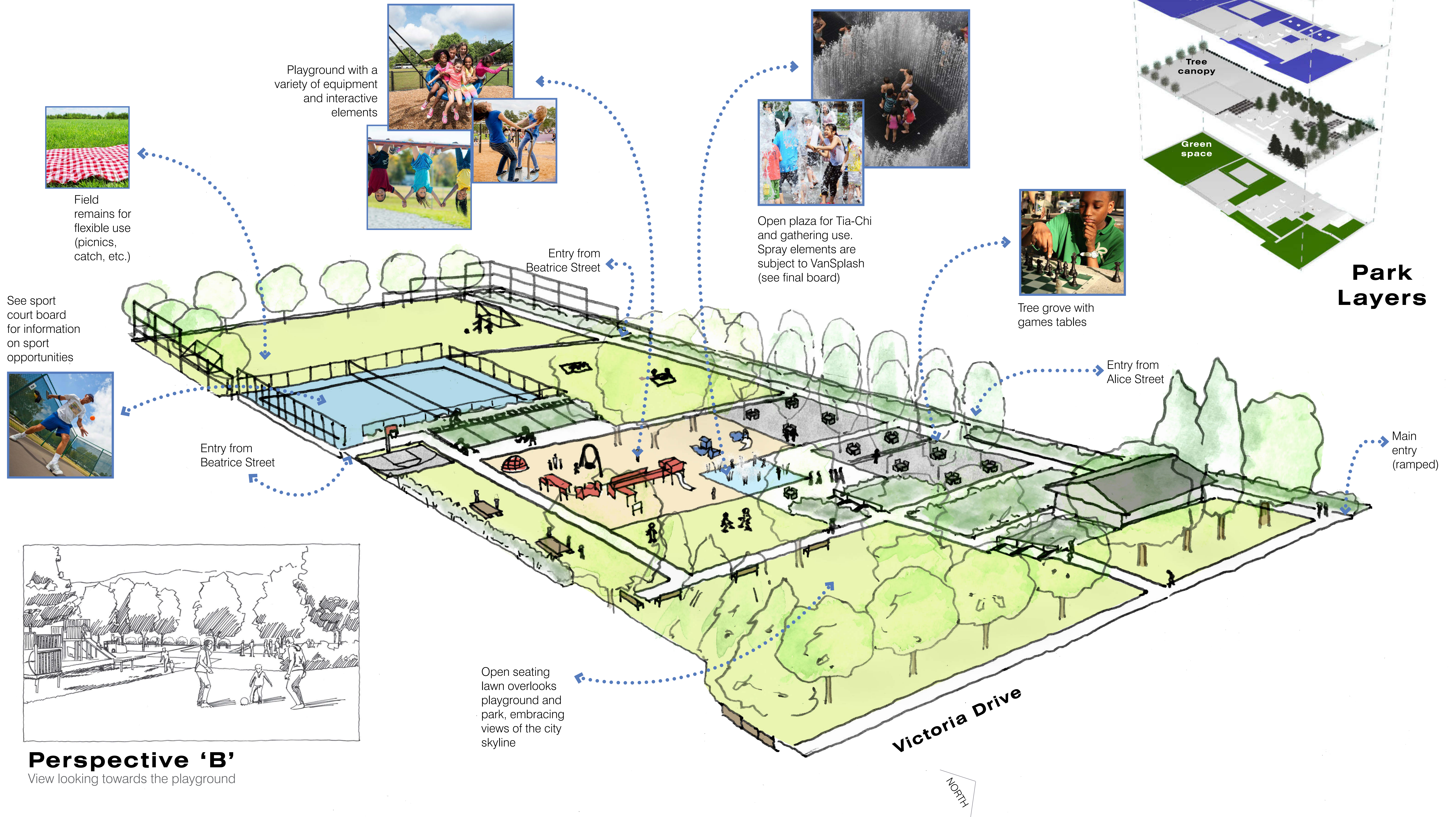
- 01 Tia-Chi Plaza and Ground Spray Plaza
- 02 Open barbecue area with flat grass for Volleyball and grass games
- 03 Main playground with large features and natureplay
- 04 Tree grove with seating and games tables
- 05 Buffer plantings at low height for safety
- 06 Half-court for basketball
- 07 Viewing berm looks at north shore mountains and city skyline
- 08 Existing tree grove to remain protected
- 09 Main gathering space with seating
- 10 Optional community garden bed
- ★ Accessible entry
- Bike parking



CONCEPT TWO: PERSPECTIVES AND COMPOSITION



Park Layers



Perspective 'B'

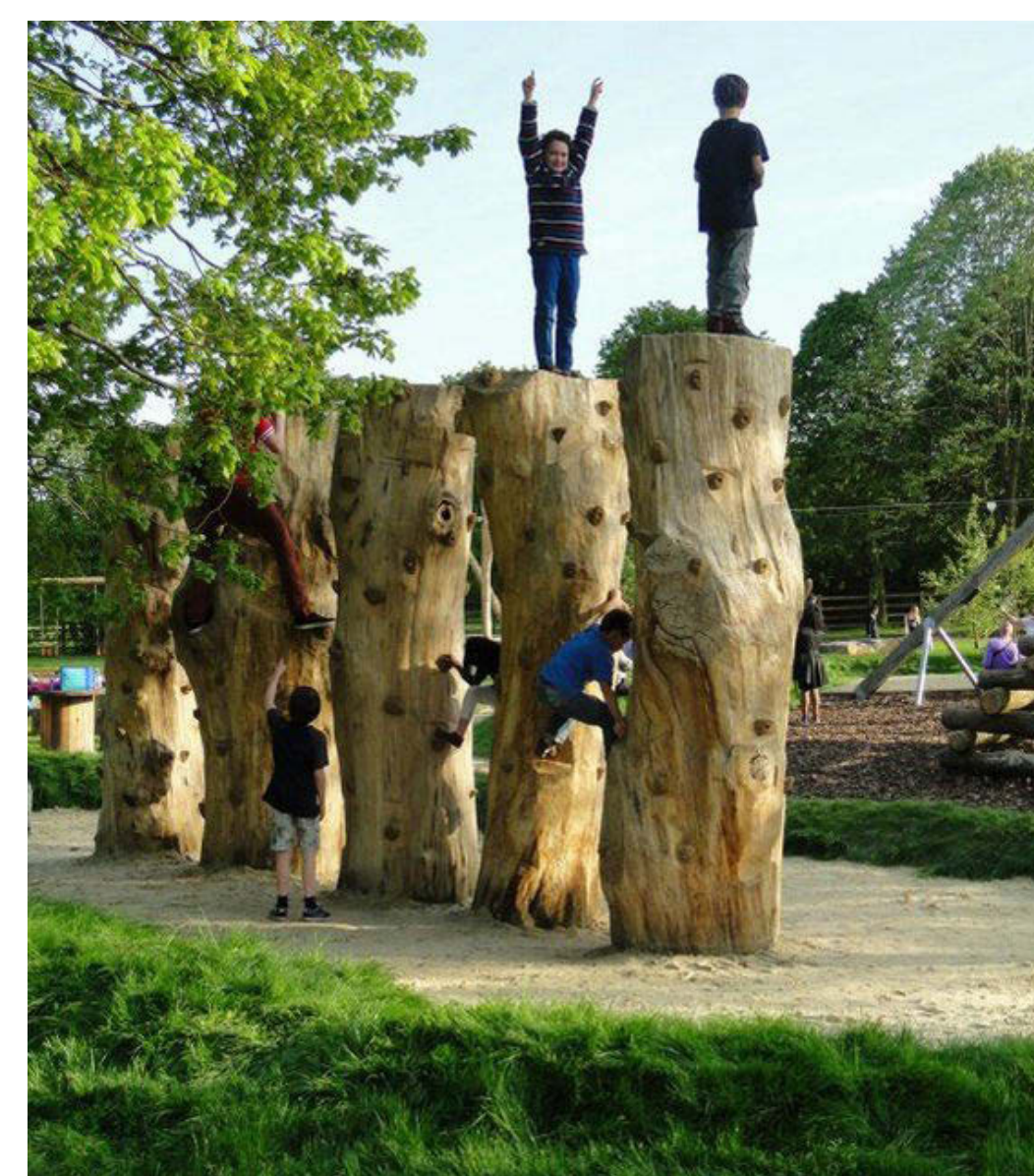
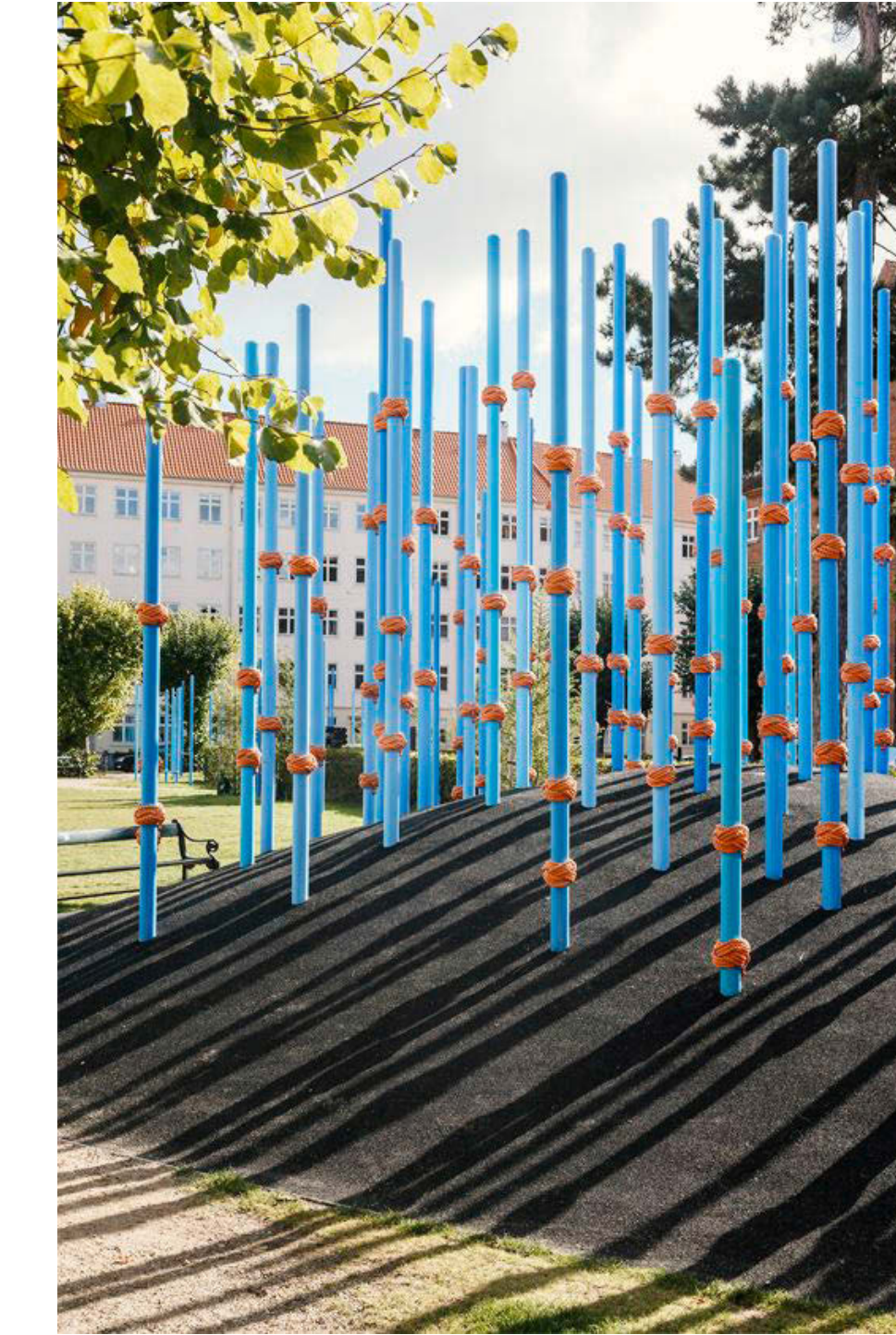
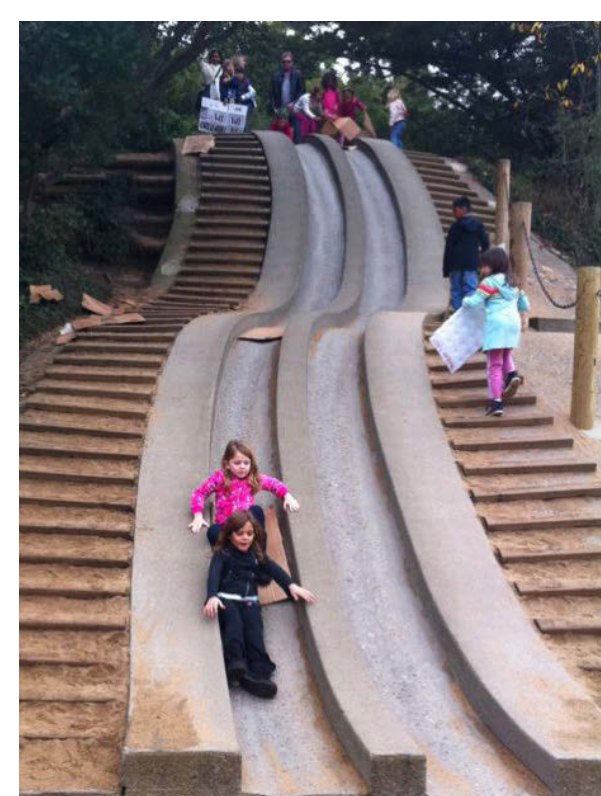
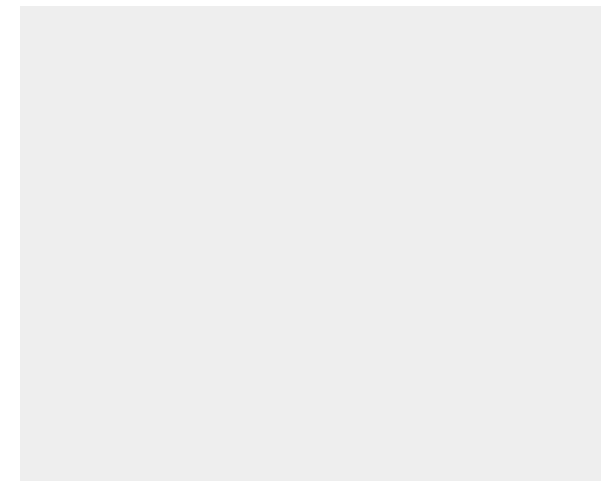
View looking towards the playground

PLAYGROUND ELEMENTS: NATUREPLAY + IMAGINATION

See examples of play features that you like?



Please place a dot next to images that you like.



"It is a happy talent to know how to play."
- Ralph Waldo Emerson



When I play at
Brewer's Park
I want to...



...swing

...spin

...slide

...climb



...rock

...splash

...bounce

...jump

...crawl

...balance

...sing



...listen

...explore

...memorize

...learn

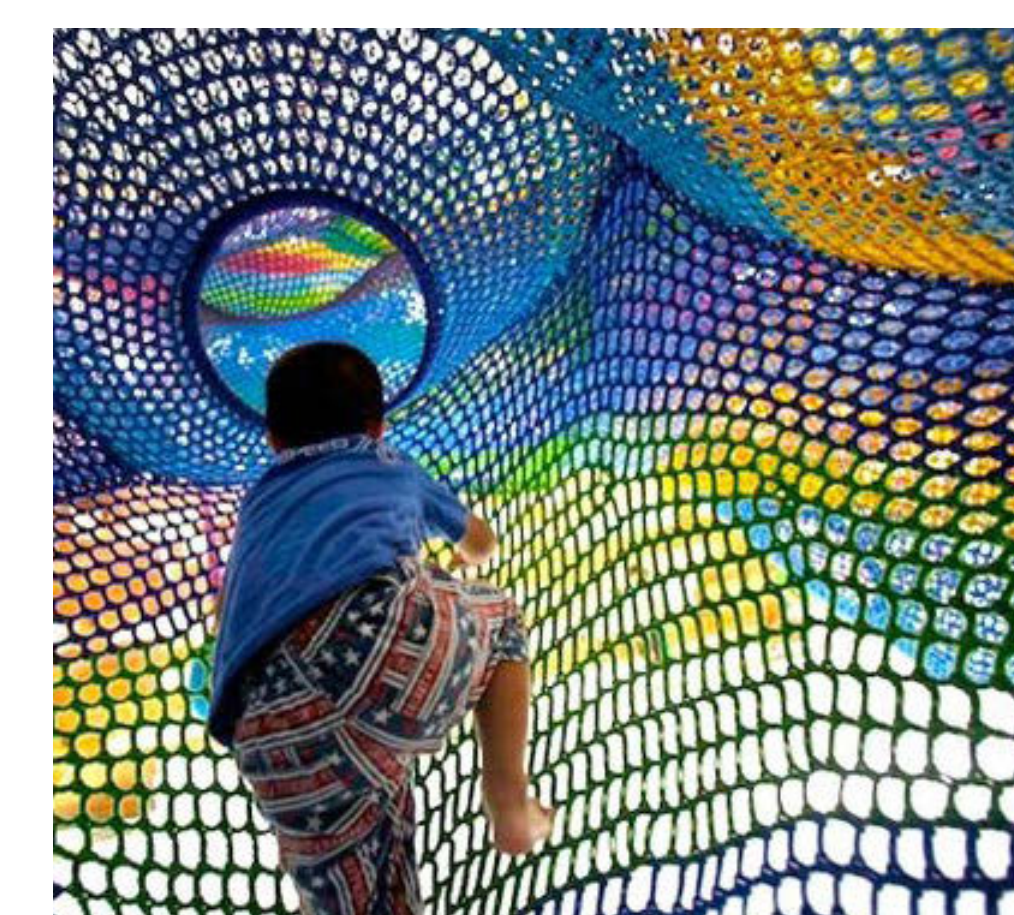
...discover



We are looking for your
feedback and ideas:

Please provide comments in this
section about toys or elements you
would like to see at Brewers Park.

If there are certain parks or features
that you or family members and friends
love, then please share!



OPTION FEEDBACK PLANS: FOR MARKUP

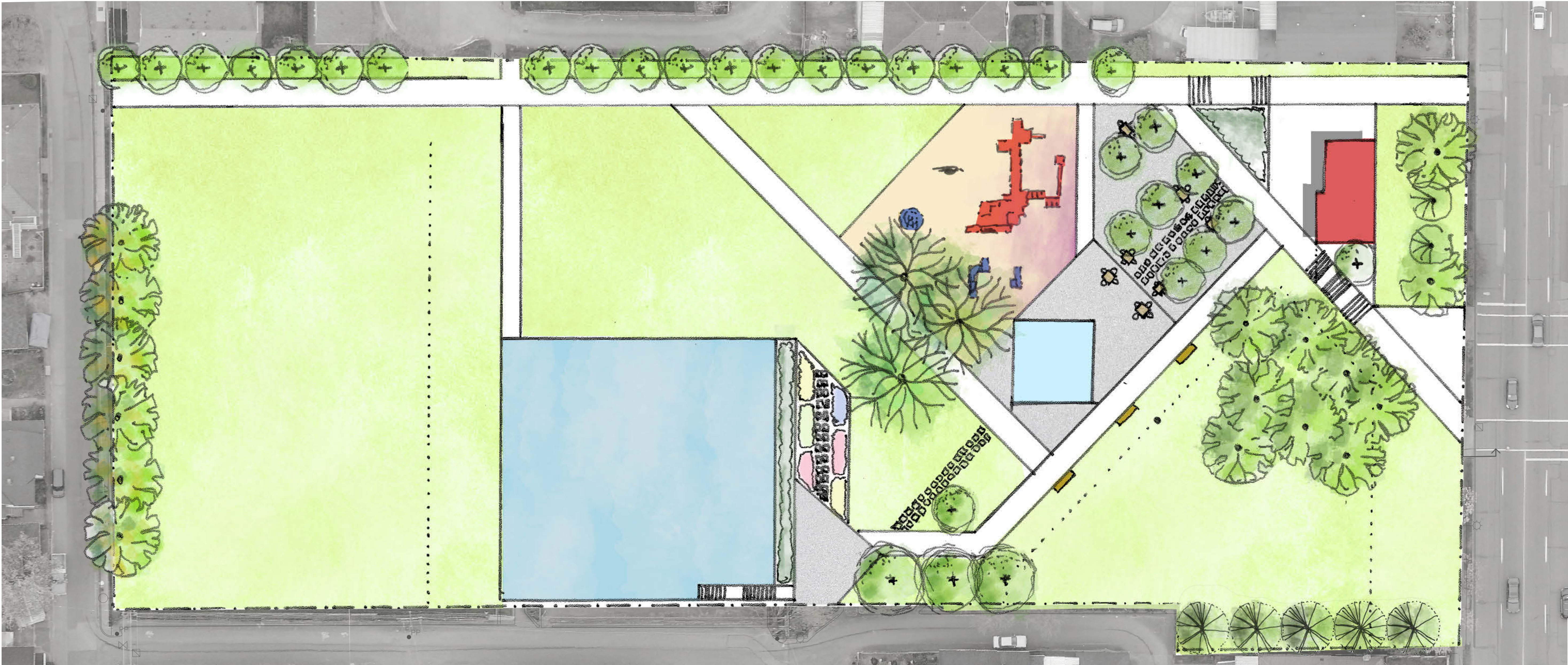
What's your preferred concept?

Please place a dot next to your preferred concept (only pick one).

If you like elements on either concept, please place a other dots on these elements and/or mark-up this plan with your feedback.

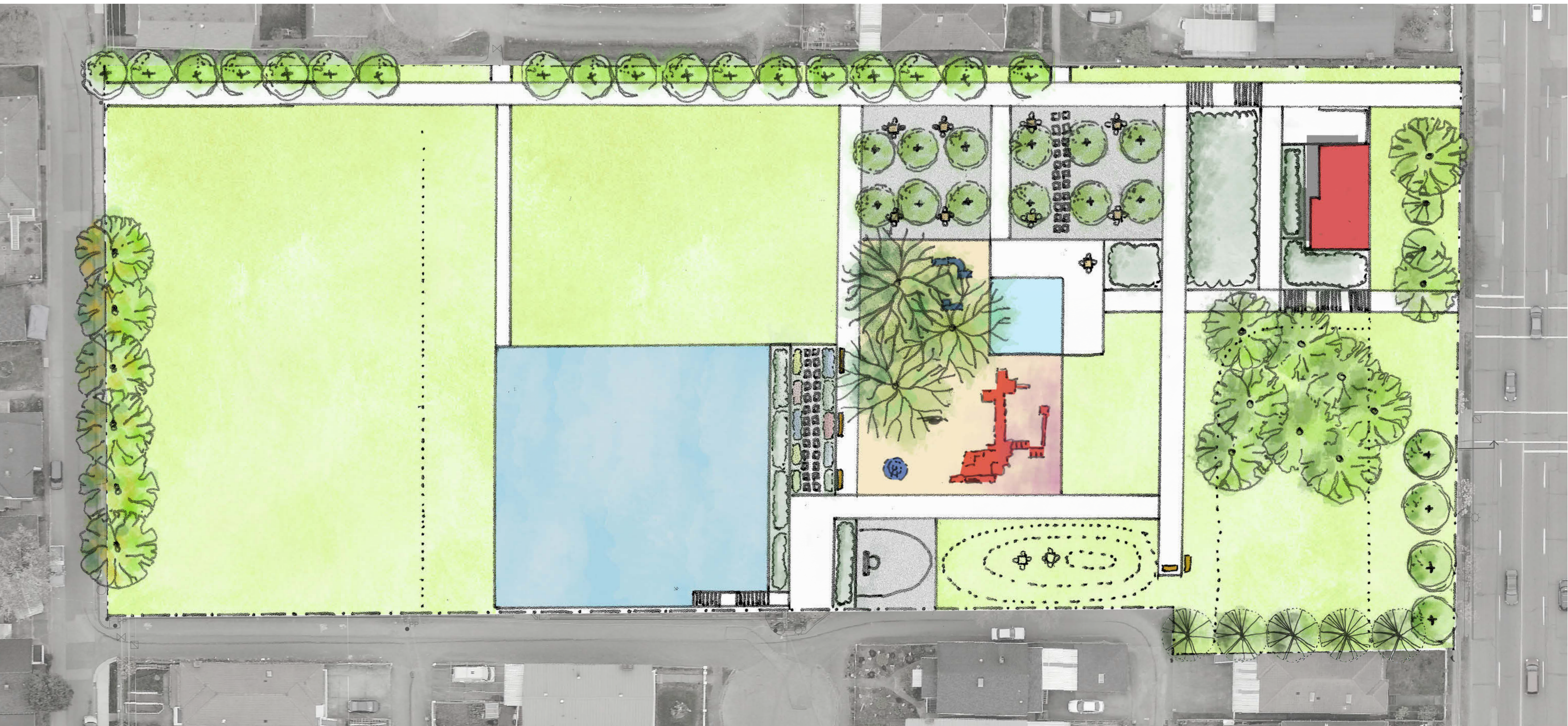
Concept 1: (cast your vote):

Place only 1 dot in this box if this is your favourite plan. Please do *not* place dots on both plans.



Concept 2: (cast your vote):

Place only 1 dot in this box if this is your favourite plan. Please do *not* place dots on both plans.



NORTH

SPORT COURT USE

We are looking for feedback on ways to improve the resurfacing of the tennis courts:



Please place “dots” on the sports you want to see at Brewers Park:



pickleball

volleyball



badminton

racquetball



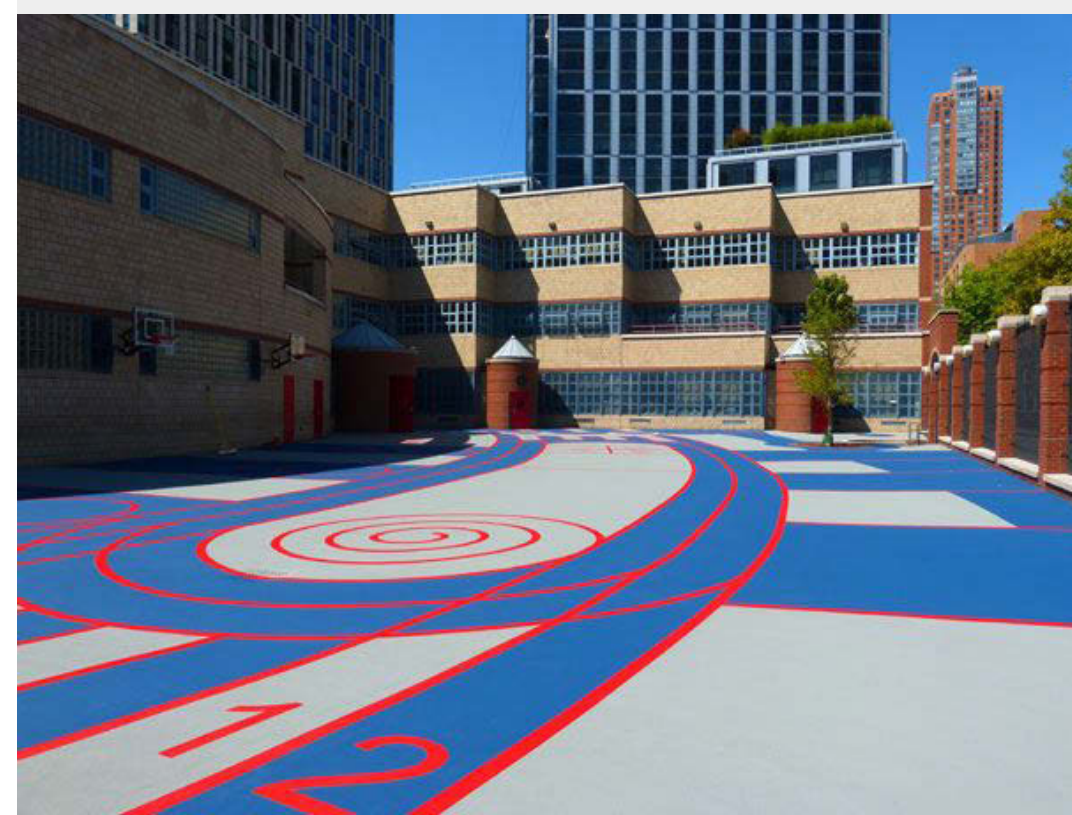
basketball

street hockey

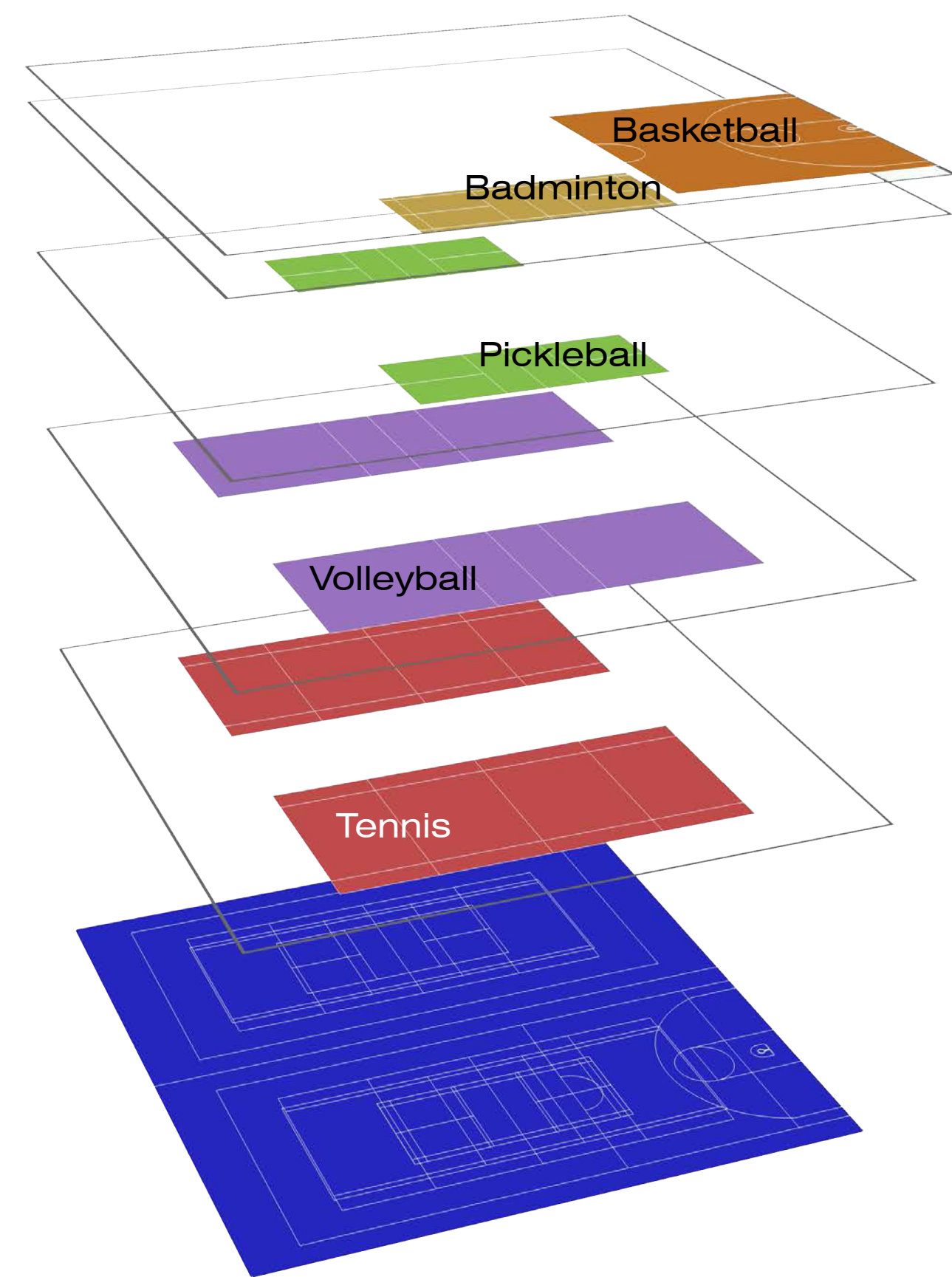
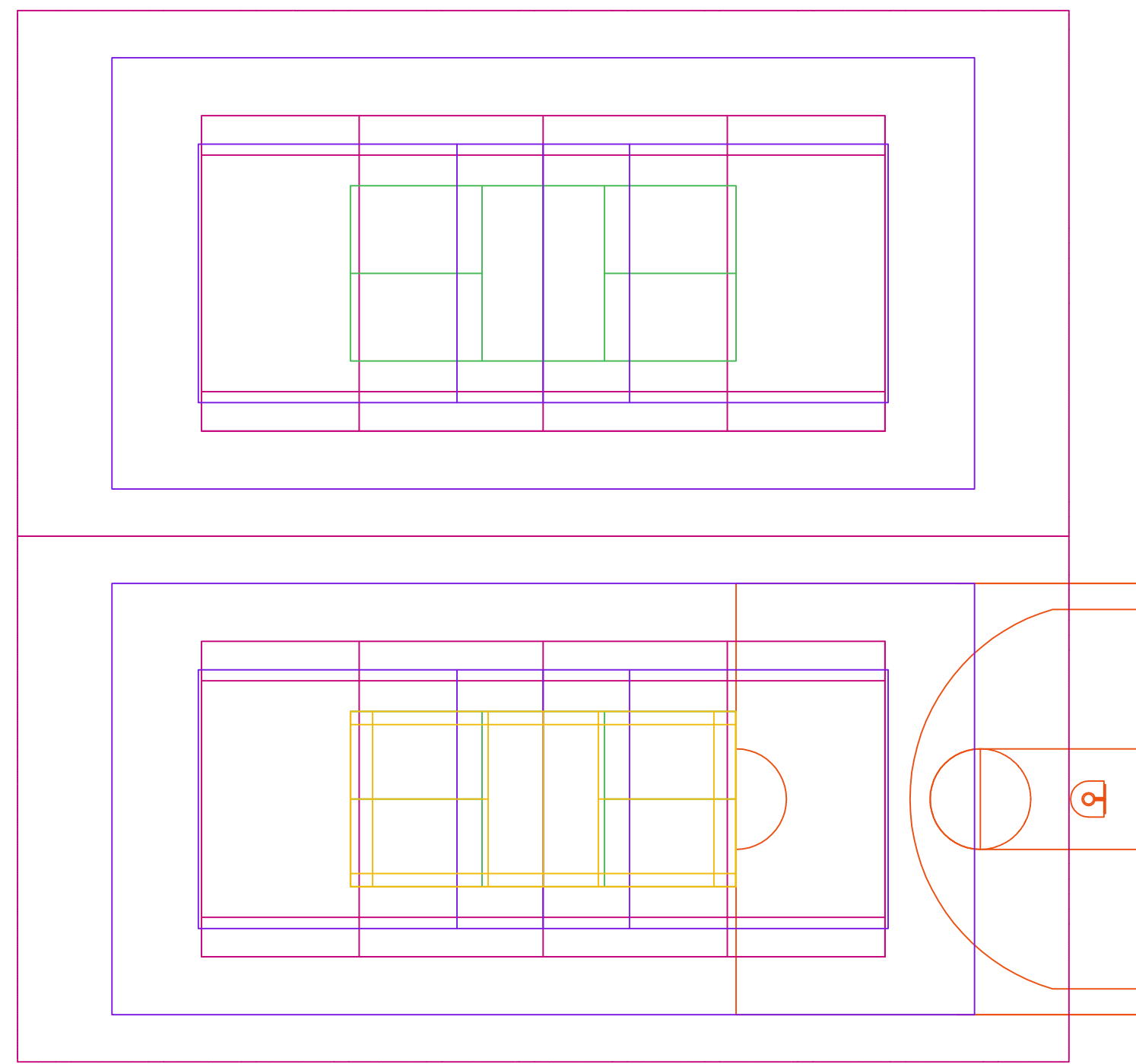


tennis

other?

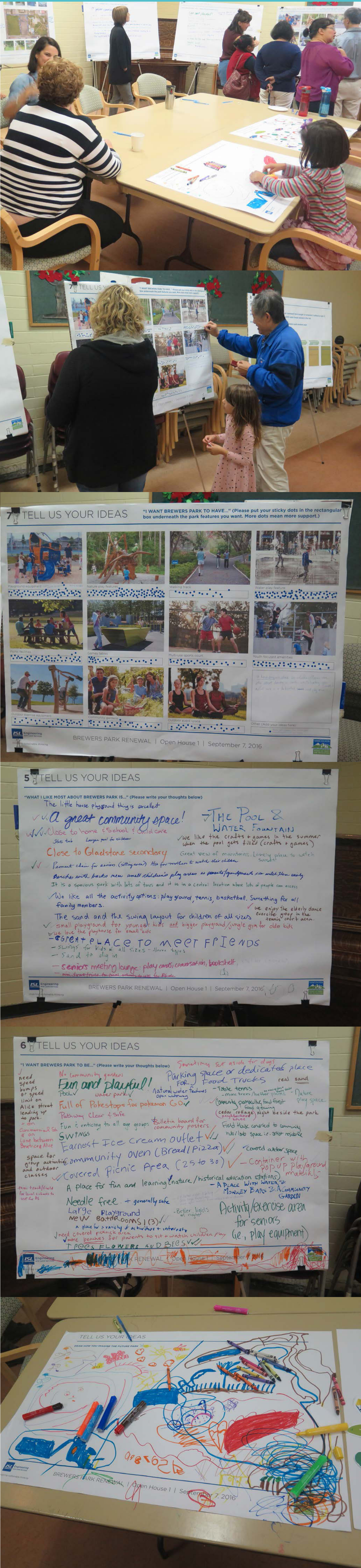


Above are images that show courts with multiple sport overlays. There is opportunity to include lines for games and other activities too.

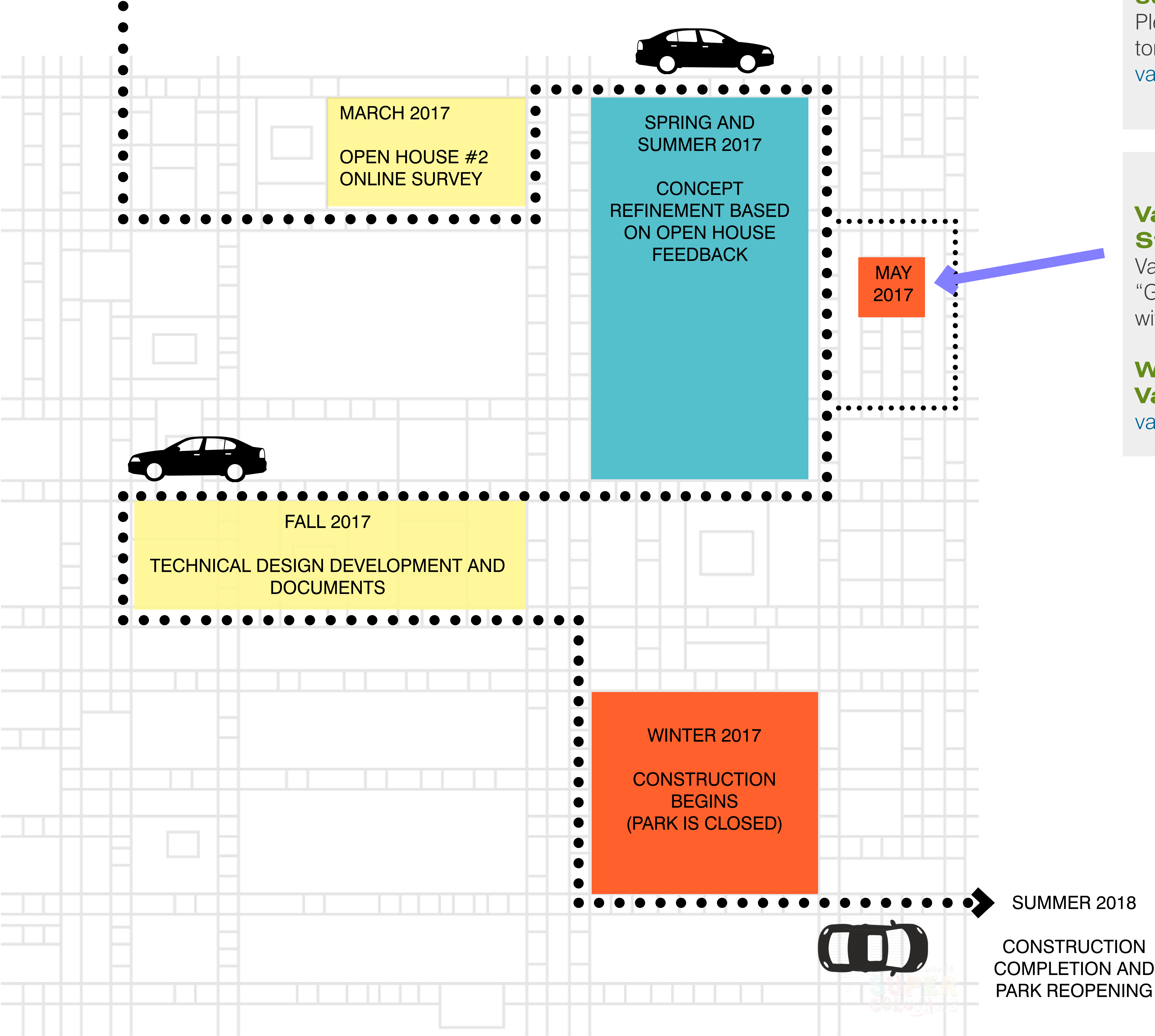


Court Options

NEXT STEPS



OPEN HOUSE #2
February 23, 2017



Thank you for attending Brewers Park Open House 2!

Don't forget to complete the survey!

Please fill out the feedback form, either tonight, or online at:
vancouver.ca/brewerspark

VanSplash Aquatics Strategy

Vancouver Park Board to review "Ground Spray Plaza" in conjunction with approved VanSplash document.

Want to know more about VanSplash?

vancouver.ca/VanSplash