

# St. Vincent's Heather | Profile

**Address:** 4875 Heather Street

**Size:** 7.49 ac (3.03 ha)

**Current Zoning:** CD-1 (82)

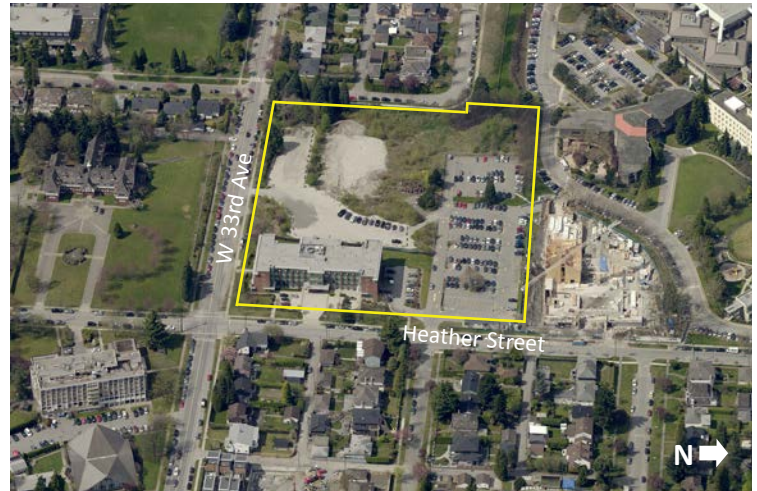
**Year Built:**

Honorina Conway Building - 2008

St. Paul II Pastoral Centre - 2014

**Current Uses:**

Assisted living facility (Honorina Conway); office space and retired clergy housing (St. Paul II Pastoral Centre)



**Surrounding Land Uses:**

- North: BC Children's and Women's Hospitals
- East: Single-family (RS-1), Phase 3 focus area
- South: Single-family (RS-1), Phase 3 focus area and RCMP site
- West: Single-family (RS-1), Phase 3 focus area

**Existing Policies and Community Vision Directions:**

- **Cambie Phase 3 Scope of Work:**
  - This is a unique site and will be guided by policy developed in Phase 3.
- **Riley Park South Cambie Vision:**
  - Limit office and retail uses, consider other institutional, cultural, or recreational uses.
  - Allow buildings up to four storeys, except for buildings replacing the original hospital (south-east corner of site), where approximately eight storeys could be built.
  - Provide non-market, affordable, and special needs housing on large sites.

**Other considerations:**

- In 2005, Council approved amendments to the CD-1 bylaw to enable the construction of Providence's "Campus of Care".
- In 2008, the four storey Honorina Conway assisted living facility was constructed on the southeast corner of the site.
- In 2014, construction of the six storey St. Paul II Pastoral Centre, located on the southwest corner of the site, was completed. The building contains administrative offices for Catholic Charities and the Roman Catholic Archdiocese of Vancouver, as well as nine units of housing for retired clergy.
- The "Campus of Care" concept identifies various health services for the remainder of the site (e.g. complex care, rehabilitation inpatient program, ambulatory care and day programs, other).
- CD-1 (82) permits total of 1.4 FSR on the site (approx. 456,605 sq ft). The two existing buildings have a combined floor area of 124,365 sq ft (0.4 FSR).

**Note:** Unique site profiles are intended to provide a general snapshot of policies and Vision directions as background for discussion. Please see actual policy, zoning, and Vision documents for full information.



Honorina Conway assisted living facility

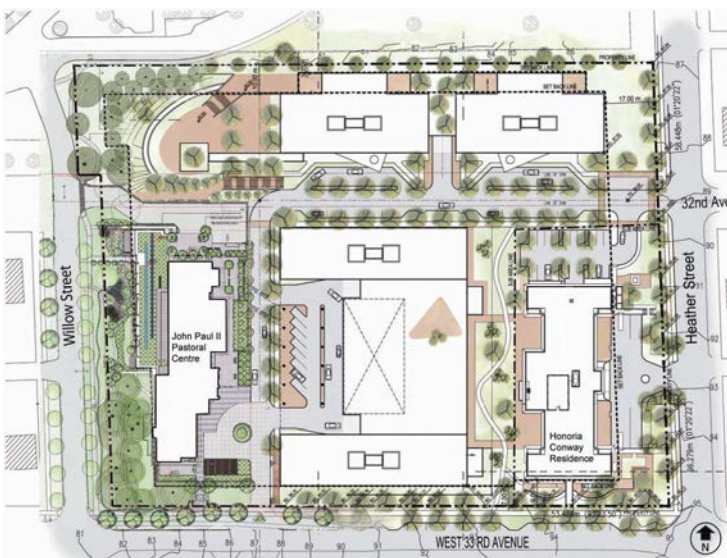


St. Paul II Pastoral Centre



St. Vincent's Heather Campus of Care sign

# St. Vincent's Heather | Context Map



Campus Site Plan - Excerpt from CD-1 Guidelines (amended for Pastoral Centre in 2013)

**LEGEND**

- Unique Sites/Areas
- Phase 3 Focus Areas
- Cambie Corridor Plan - Phase 2 Residential
- Cambie Corridor Plan - Phase 2 Mixed-Use
- Rezoning Application - approved
- Rezoning Application - in process
- Potential Canada Line Station

**Note:** Unique site profiles are intended to provide a general snapshot of policies and Vision directions as background for discussion. Please see actual policy, zoning, and Vision documents for full information.