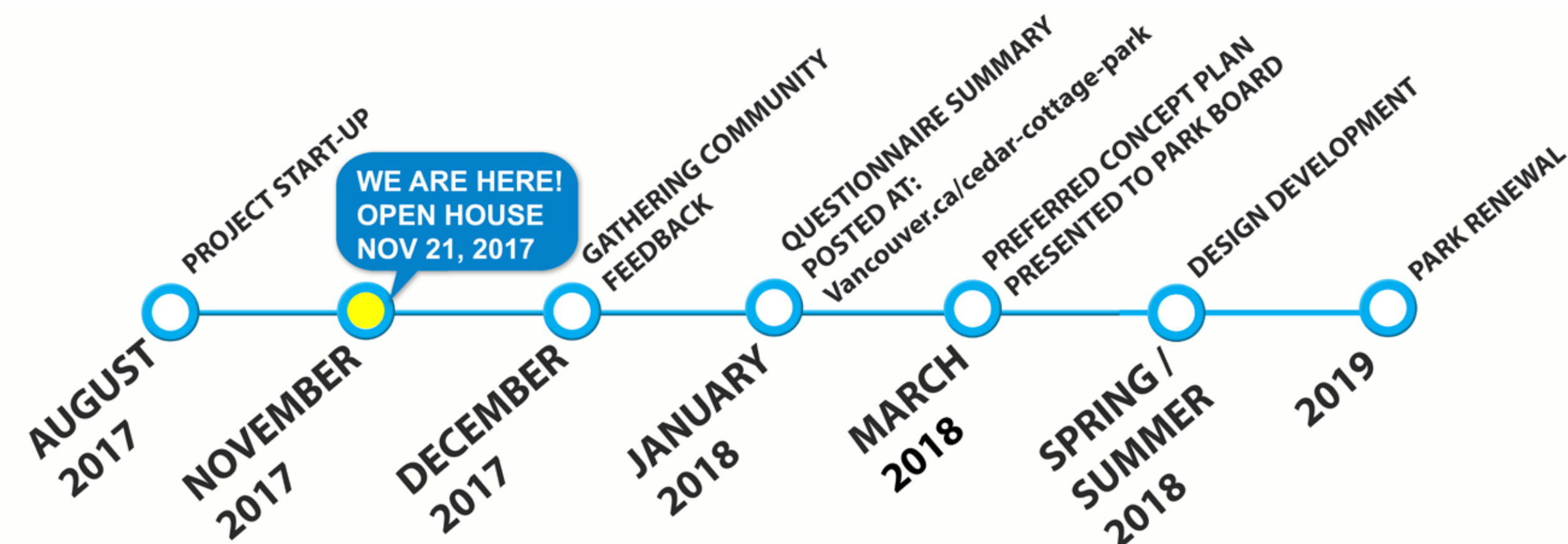
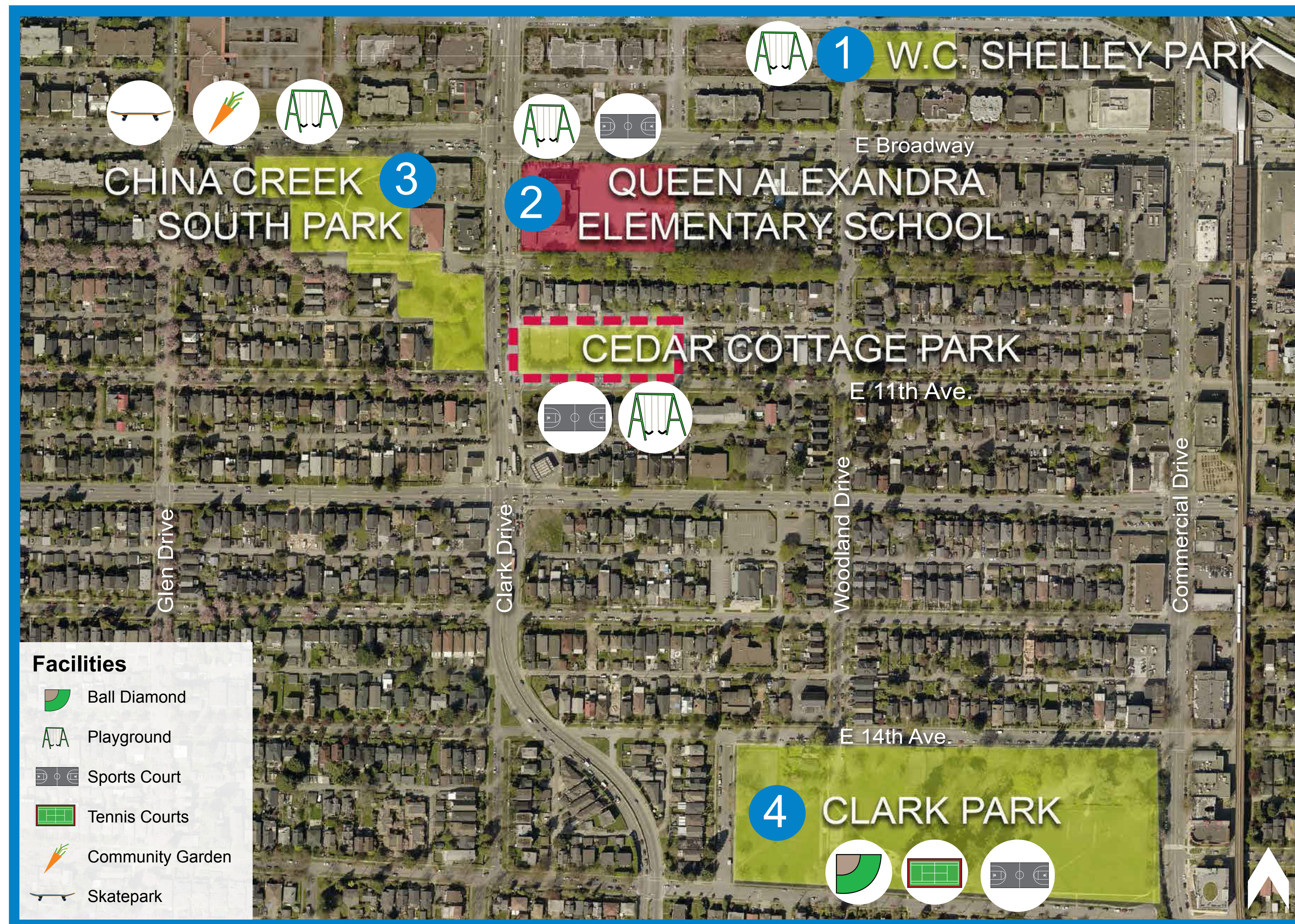


# Welcome!

Thank you for coming to Cedar Cottage Park Open House.  
Please review the display boards and share your comments and ideas.  
We will use your input to develop a preferred concept for the park.



1 W.C. Shelley Park Playground



## Overview

Located in the Kensington Cedar Cottage neighbourhood in East Vancouver, Cedar Cottage Park is valuable greenspace nestled amongst mainly single family homes. Cedar Cottage Park is a small .47 hectare neighbourhood park built in the mid-1970's and currently features an open grass area, large trees, children's playground, sports courts and a picnic area. It is in close proximity to several parks and schools such as W.C. Shelley Park, Queen Alexandra Elementary School, China Creek South Park and Clark Park.

## Background

In recent years Cedar Cottage park users and Park Board staff have observed:

- Aging playground equipment and safety surfacing needs updating
- Sports court surfacing uneven and diminished use
- Universally accessible pathways needed to connect park features
- Sightlines need improving

Responding to we heard, the Park Board wants to renew the playground to meet current CSA standards and replace the sports courts with more greenspace OR one new multi-purpose sports court. We would like your input to prioritize these and other needed upgrades.

## What's Happening Now?

The Park Board has prepared 2 preliminary concept plans and would like to know what you think!  
The key difference between the 2 concepts is:

- The location of the playground,
- Replacing the sports courts with a multi-purpose sports court, OR
- Replacing the sports courts with more greenspace. Your feedback will help us develop a preferred concept for Cedar Cottage Park.

## Vision

The renewal of Cedar Cottage Park aims to create an accessible, safe and enjoyable place for the community to gather, play and recreate.

## Goals for Today

1. Identify Cedar Cottage Park features and issues
2. Outline design goals for the park renewal project
3. Get your feedback on 2 proposed concept plans

## Next Steps

Once we have received feedback from the public, we will use the input to develop a preferred concept for Cedar Cottage Park.

## Questions?

Please speak to staff from the Vancouver Park Board here today!

Let us know which concept you feel would work best in your neighbourhood park by completing the questionnaire now or online before December 5th at: <http://vancouver.ca/cedar-cottage-park>

2 Queen Alexandra Elementary School: Playground and basketball court



3 China Creek South Park: Playground, skate park and community garden



4 Clark Park: Playgrounds, tennis courts, ball hockey court, ball diamond and basketball court

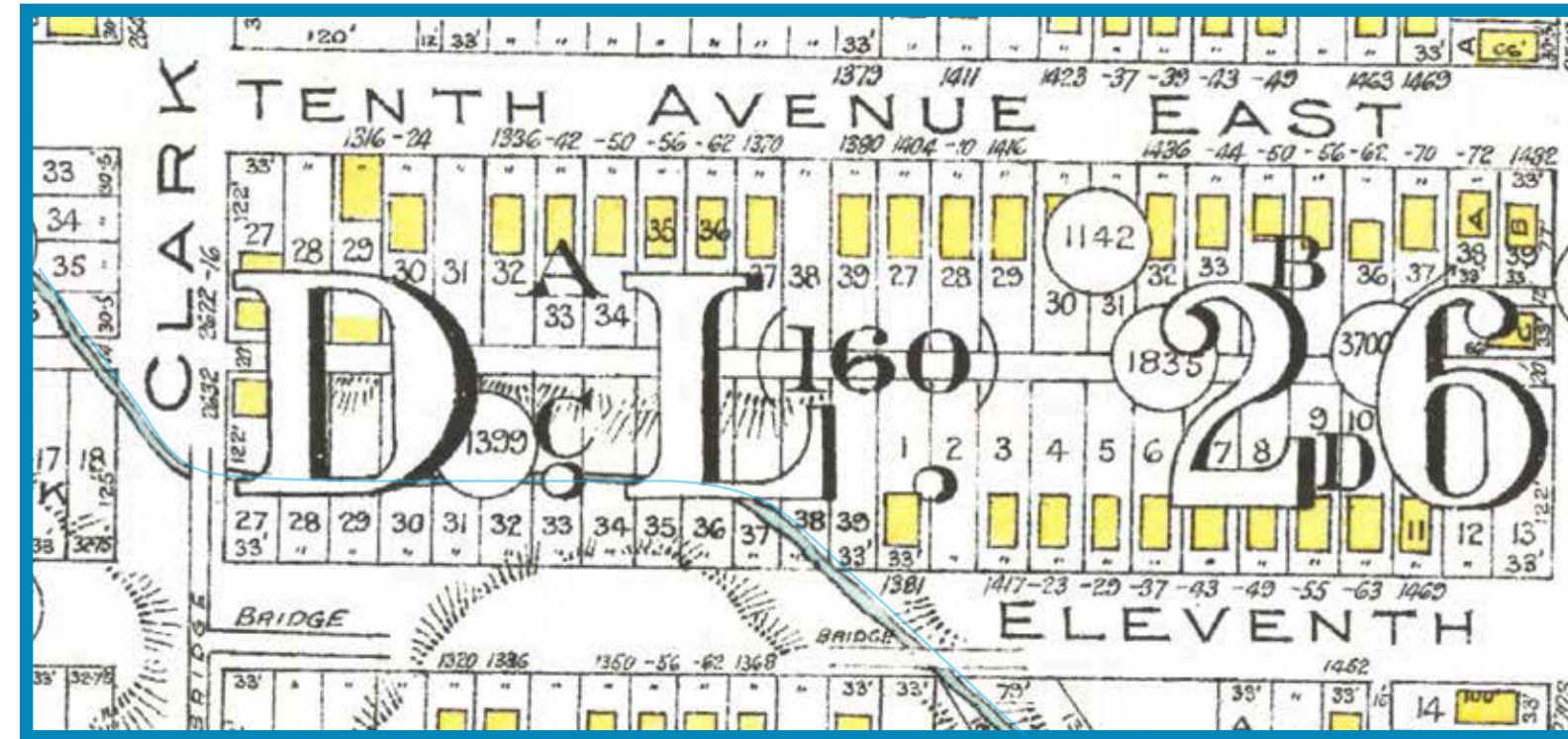




# Introduction

## History of Cedar Cottage Park

Cedar Cottage Park was established in the 1970's. Prior to this, a stream once flowed through the site from east to west. The site was then used as a landfill and the ravine was filled in the 1970s and replaced with the park you see today.



1921 Goads Fire Insurance Map

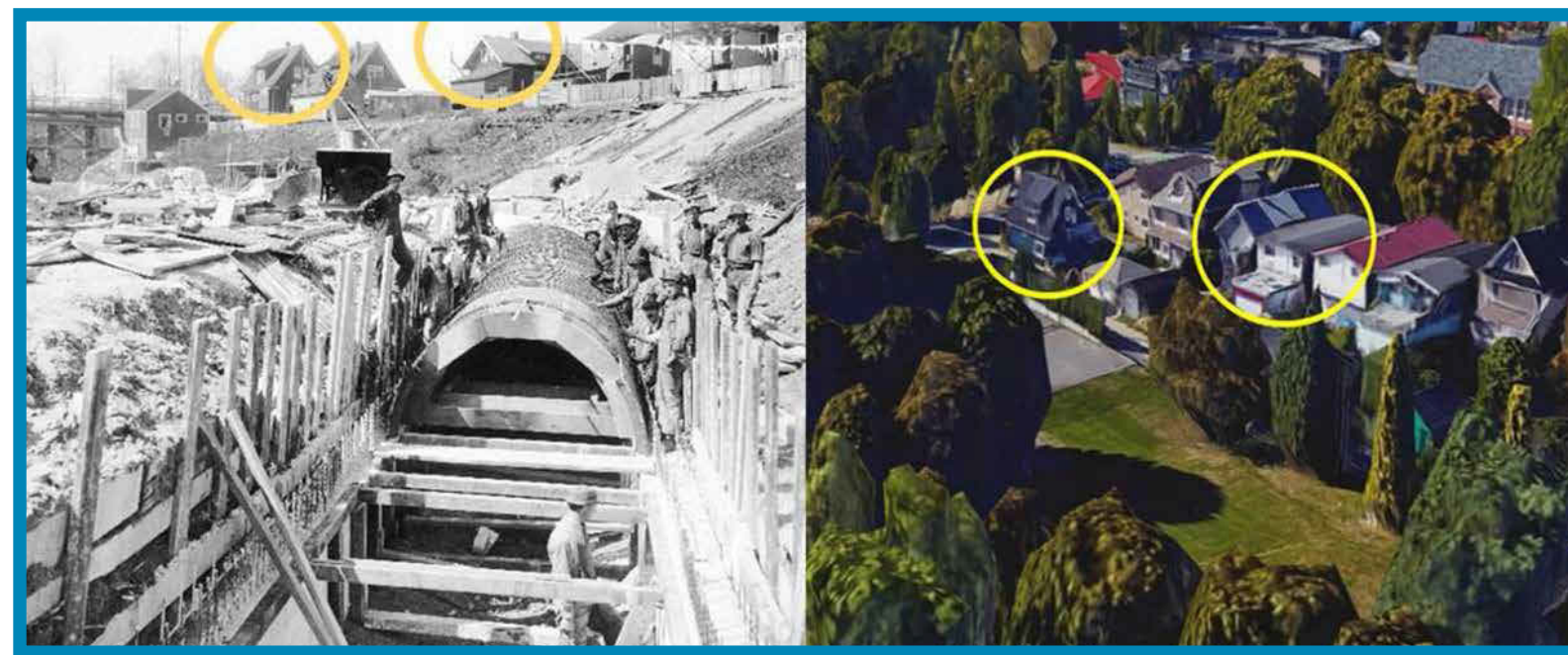


Photo Taken in 1910 where Cedar Cottage Park is now. A 2.7m diameter concrete pipe for a Metro Vancouver Sewer Line is shown under construction (City of Vancouver Archives)

The redesign of Cedar Cottage Park will address the following:

### Community Use

- Create a sense of identity

### Universal Accessibility

- An accessible pathway is proposed around the park

### Multi-generational Activities

- Maintain or increase the open green space for active and passive recreation

### Park Maintenance

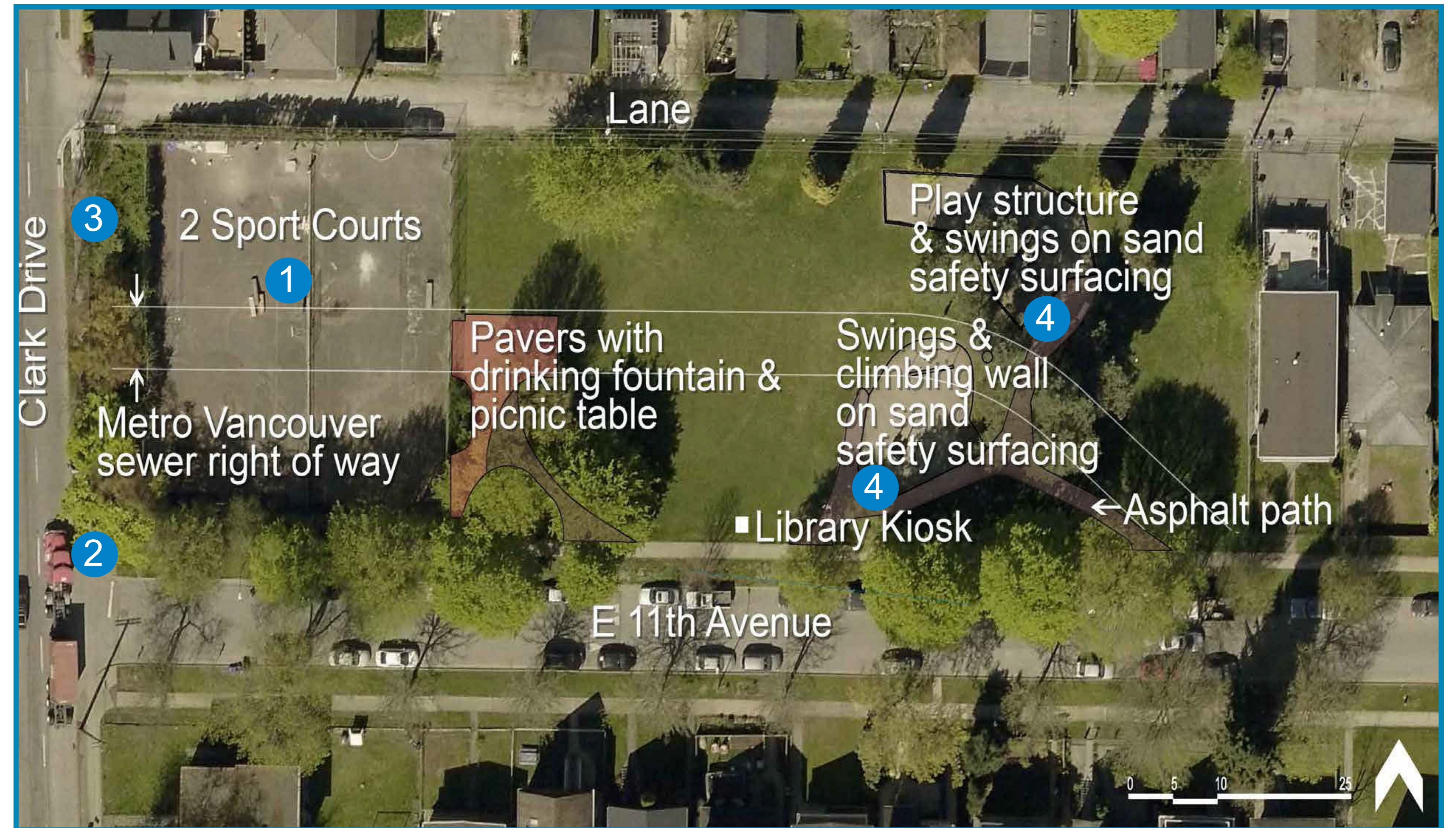
- Use of durable materials

### Connectivity

- Accessible pathway to improve connections between park features

### Public Safety

- Improve the sight lines into the park
- Upgrade or remove the sports courts
- Renew the playground

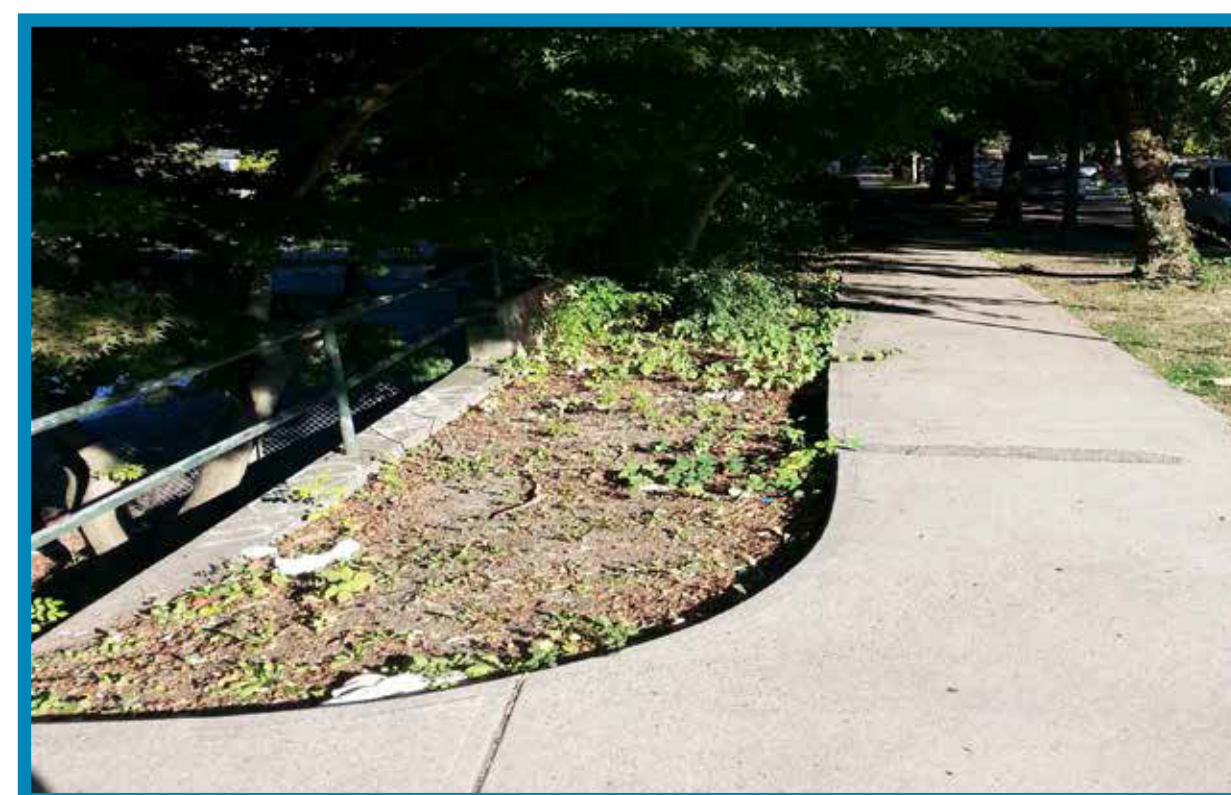


Map of Site Issues and Considerations



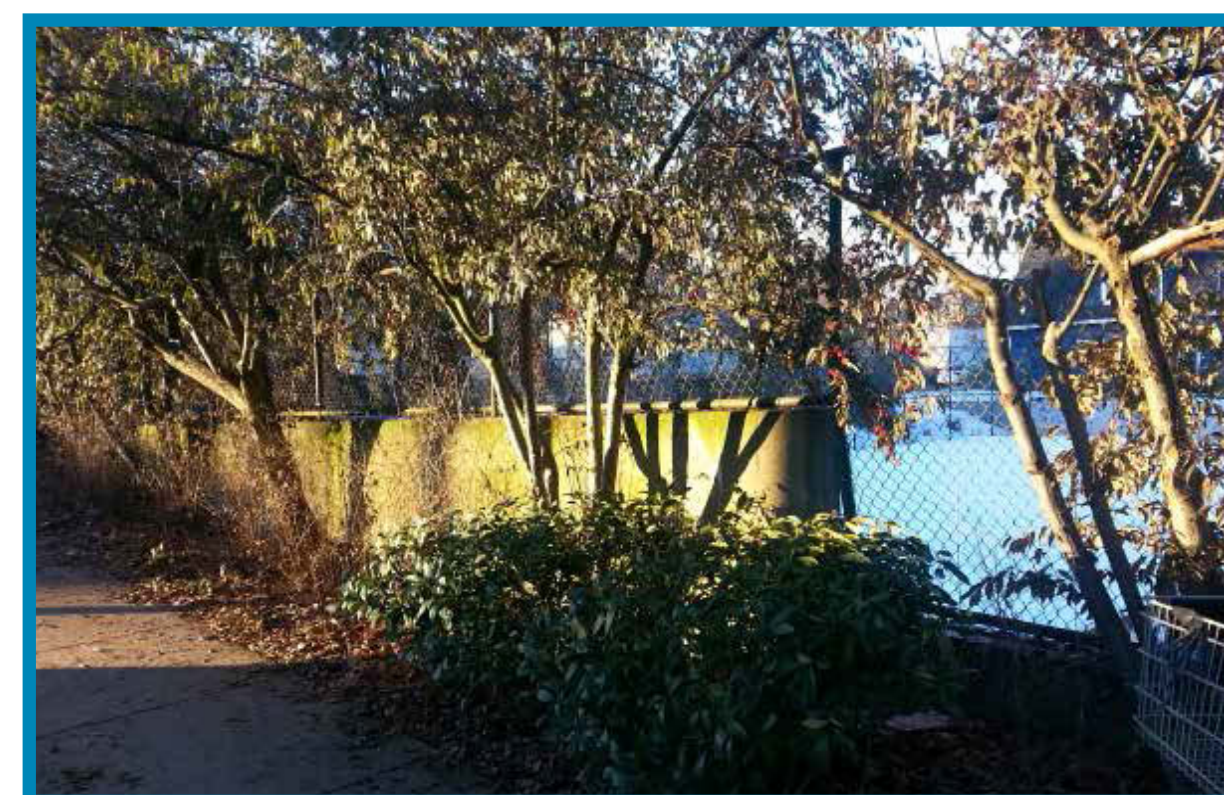
### 1 Failing Sports Courts

Unstable soil conditions, ongoing settlement and an aging sports court have contributed to a cracked, uneven surface with many depressions and pooling of water.



### 2 Poor Sight Lines at the corner of Clark Drive and 11th Avenue

The sports courts are approximately 1.5m below Clark Drive and a 1 to 1.2m retaining wall extends along the south side of the courts and extends another 1.2m above the existing sidewalk grade. This retaining wall and planting create poor sight lines into the courts.



### 3 Invasive Plants

Himalayan blackberry covers the western slope of the park.



### 4 Aging Playground Structures

Installed in the early 1970's, these playground structures are in need of an upgrade.

## Cedar Cottage Park Renewal



# Concept 1

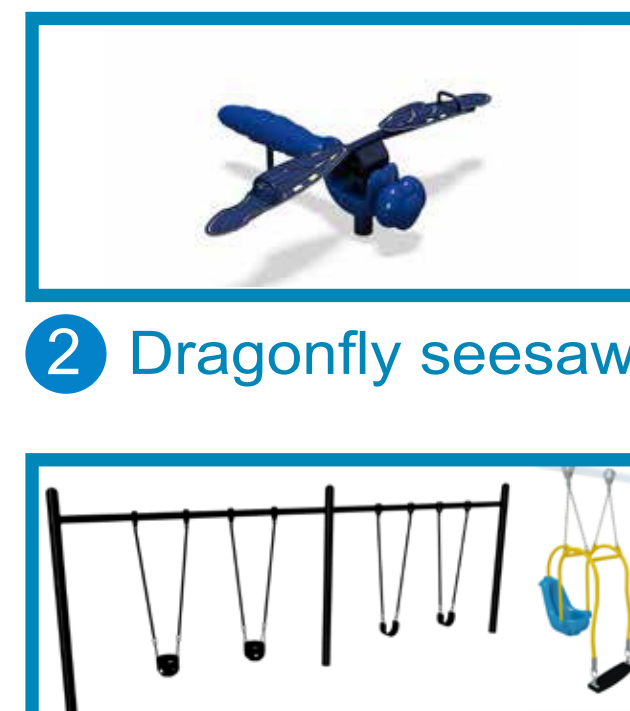
- Sports courts replaced with open green space
- New playground located close to existing location
- Accessible pathways
- Accessible park entry at Clark Drive



Add your comments here



1 Entrance sign



2 Dragonfly seesaw  
3 Swings with toddler seats



4 Tot playground



5 Picnic table



6 Spinner



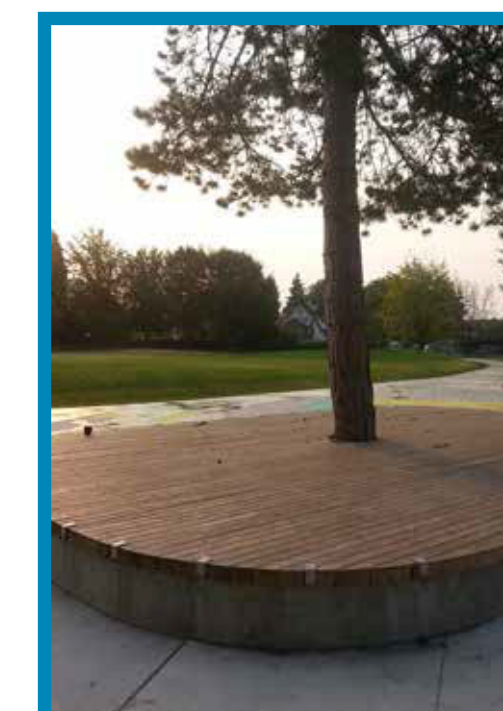
7 TriRunner play structure



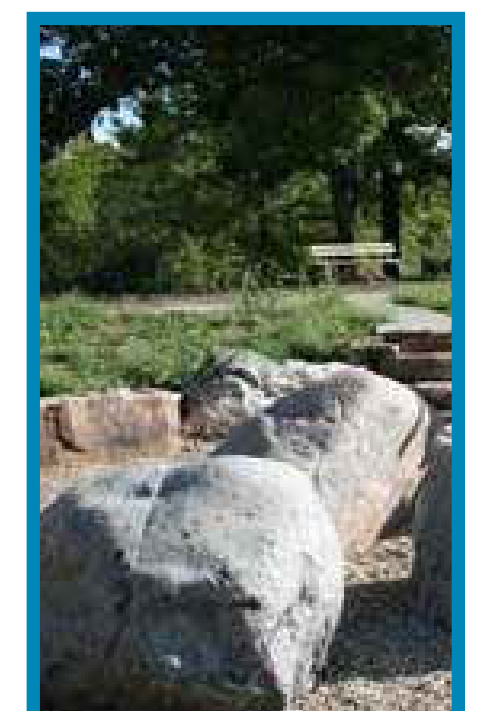
8 Playground rubber safety surface  
9 Parkour



10 Open green space



11 Wood platform



12 Boulders



# Concept 2

- One multi-purpose sports court
- New playground moved closer to sports court
- Accessible pathways
- Park entry stairs at Clark Drive



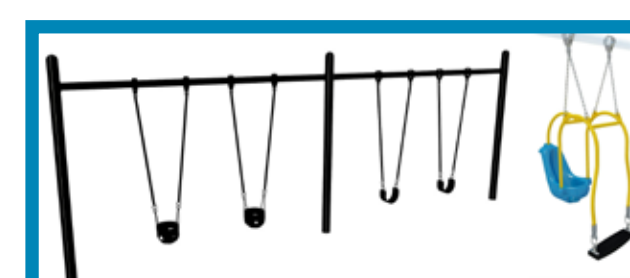
Add your comments here



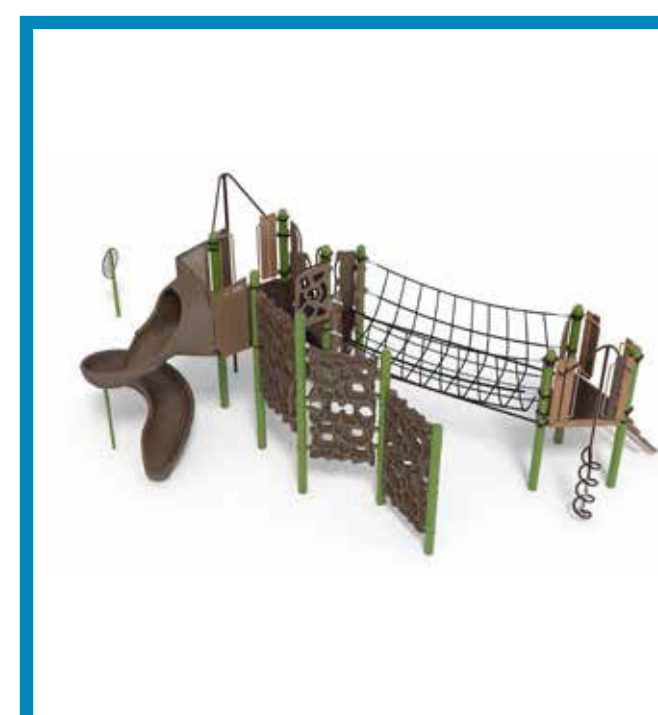
1 Entrance sign



2 Dragonfly seesaw



3 Swings with toddler seats



4 Playground structure



5 Picnic table



6 Global motion play structure



7 Painted sports court



8 Playground rubber safety surface



9 Outdoor table tennis



10 Seat wall



11 Open green space



12 Boulders