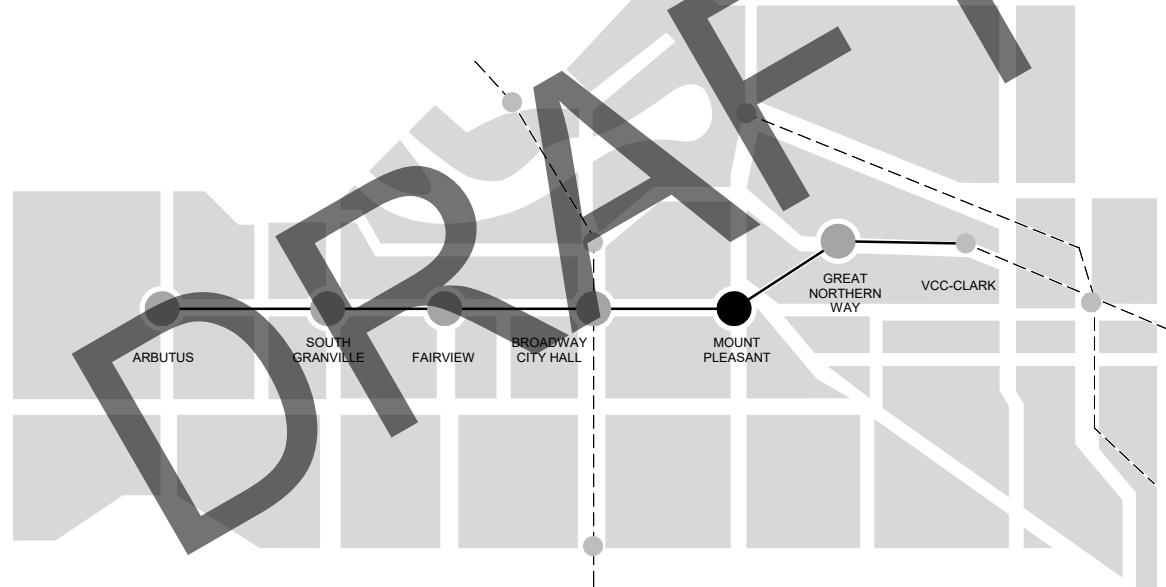


BROADWAY SUBWAY PROJECT (BSP)

INITIATING DESIGN SUBMISSION #1 MOUNT PLEASANT STATION



Ministry of
Transportation
and Infrastructure



CONFIDENTIAL DOCUMENT NOT TO BE DISTRIBUTED WITHOUT WRITTEN CONSENT

BROADWAY SUBWAY PROJECT (BSP)

INITIATING DESIGN SUBMISSION #1 MOUNT PLEASANT STATION

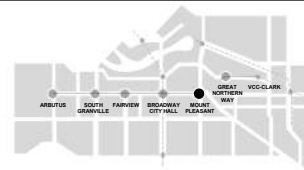
DRAFT

SHEET LIST	
SHEET NUMBER	SHEET NAME
A0000	COVER SHEET AND DRAWING INDEX
A0001	SCHEDULES
A1100	CONTEXT PLAN
A1101	SITE PLAN
A1102	STATION PLAZA PLAN
A1210	GROUND LEVEL PLAN
A1512	CONTOUR LEVEL PLAN
A1611	PLATFORM LEVEL PLAN
A2201	ELEVATIONS - ENTRANCE
A2202	ELEVATIONS - EMERGENCY EXIT
A3001	LONGITUDINAL SECTION
A3002	CROSS SECTIONS - A & C
A3003	CROSS SECTIONS - B & D
A6201	EXTERIOR PERSPECTIVES
A6202	INTERIOR PERSPECTIVES

ISSUE/REVISION		REFERENCES	
DATE	BY	DESCRIPTION	APPR
10/28/20	S.E.	ISSUED FOR INITIATING DESIGN SUBMISSION #1	C.H.



REGISTRATION CONSULTANTS KEY PLAN



PROJECT
BROADWAY SUBWAY PROJECT

TRANS LINK
400 - 287 Nelson's Court New
Westminster, BC V3L 0E7 Canada
Tel: 778.375.7500 Fax:
778.375.7510

DRAWING INFORMATION

DRW BY	J.J.
DES BY	O.O.
CHK BY	S.E.
APR BY	C.H.

CONTRACT NUMBER
XXXXX-XX
PROJECT NUMBER
126436
SHEET TITLE
DESIGN DRAWINGS
MOUNT PLEASANT STATION
ARCHITECTURAL
COVER SHEET AND DRAWING INDEX
DRAWING NUMBER
126436-TS-STMP-IG-A0000

ANSI D 598.60mm x 863.60mm
Date Plotted: 2020/10/29 09:10 AM
Plot File: \\s1\proj\126436 - Broadway Subway Station\IG-A-CENTRAL-STATION\MAIN.rvt

FINISHES TO ANCILARY AND SERVICE ROOMS, AND PUBLIC SPACES										
ROOM#	NAME	LOCATION	FLOOR FINISH	WALL FINISH	BASE FINISH	CEILING FINISH	DOOR	PA AREA	AREA	SECURED ACCESS
1	PLATFORM	PLATFORM	F08F09F11F12	WS	N/A	C1/C2	D1	N/A	783 m²	N/A
2	CONCOURSE	CONCOURSE	F08F10F12	WS6	N/A	C1	D1	N/A	889 m²	N/A
3	ENTRY	GROUND	F08F10F13	WSW6	N/A	C1	D1	N/A	362 m²	N/A
4	EE	PLATFORM	F01	W1	N/A	C1	D1	N/A	12 m²	N/A
4A	EE A	CONCOURSE	F01	W1	N/A	C1	D1	N/A	69 m²	N/A
5	VEST	CONCOURSE	F01	W1	N/A	C1	D1	N/A	6 m²	A
5A	VEST A	PLATFORM	F01	W1	N/A	C1	D1	N/A	32 m²	A
5B	VEST B	CONCOURSE	F01	W1	N/A	C1	D1	N/A	48 m²	A
5C	VEST C	CONCOURSE	F01	W1	N/A	C1	D1	N/A	21 m²	A
5D	VEST D	PLATFORM	F01	W1	N/A	C1	D1	N/A	2 m²	A
5E	VEST E	PLATFORM	F01	W1	N/A	C1	D1	N/A	7 m²	A
5G	VEST G	CONCOURSE	F01	W1	N/A	C1	D1	1.0 x 1.25 x 2.8	11 m²	A
5H	VEST H	CONCOURSE	F01	W1	N/A	C1	D1	N/A	2 m²	A
5J	VEST J	PLATFORM	F01	W1	N/A	C1	D1	N/A	2 m²	A
5K	VEST K	PLATFORM	F01	W1	N/A	C1	D1	N/A	54 m²	A
6	TVS SHAFT	CONCOURSE	F03	W1	N/A	C1	D1	N/A	84 m²	A
6A	TVS SHAFT A	CONCOURSE	F03	W1	N/A	C1	D1	N/A	18 m²	A
6B	TVS SHAFT B	CONCOURSE	F03	W1	N/A	C1	D1	N/A	188 m²	A
6C	TVS SHAFT C	CONCOURSE	F03	W1	N/A	C1	D1	N/A	47 m²	A
6D	TVS SHAFT D	PLATFORM	F03	W1	N/A	C1	D1	N/A	42 m²	A
6E	TVS SHAFT E	PLATFORM	F03	W1	N/A	C1	D1	N/A	74 m²	A
6F	TVS SHAFT F	CONCOURSE	F03	W1	N/A	C1	D1	N/A	63 m²	A
6G	TVS SHAFT G	CONCOURSE	F03	W1	N/A	C1	D1	N/A	96 m²	A
10	ERR	CONCOURSE	F06	W1	B1	C1	D1	7.0 x 6.0 x 4.1	41 m²	A
12	RR	CONCOURSE	F06	W1	B1	C1	D1	6.0 x 3.0 x 4.1	32 m²	A
13	PPS	PLATFORM	F01/F04	W1	N/A	C1	D1	10.0 x 30.0 x 4.5	214 m²	A
13A	PPS A	CONCOURSE	F01/F04	W1	N/A	C1	D1	10.0 x 30.0 x 4.5	92 m²	A
14	ARJU	GROUND	F03	N/A	N/A	N/A	N/A	9.0 x 5.0 x 3.0	45 m²	A
16	ACER #1	CONCOURSE	F01	W1	N/A	C1	D1	7.0 x 6.0 x 3.2	42 m²	A
17	UPS	CONCOURSE	F01	W1	N/A	C1	D1	7.0 x 6.0 x 3.2	42 m²	A
18	ACER #2	CONCOURSE	F01	W1	N/A	C1	D1	4.0 x 3.0 x 3.2	15 m²	A
19	ECOM	CONCOURSE	F01	W1	N/A	C1	D1	3.0 x 3.0 x 3.2	15 m²	A
20	CTRM	CONCOURSE	F01	W1	N/A	C1	D1	5.0 x 4.0 x 3.2	22 m²	A
21	TC	CONCOURSE	F01	W1	N/A	C1	D1	1.5/1.6 x 1.0 x 2.8	2 m²	A
22	CPC	PLATFORM	F01	W1	N/A	C1	D1	1.0 x 1.25 x 2.8	6 m²	A
22A	CPC A	PLATFORM	F01	W1	N/A	C1	D1	1.0 x 1.25 x 2.8	3 m²	A
30	TVFR	CONCOURSE	F01	W1	N/A	C1	D1	N/A	288 m²	A
30A	TVFR A	CONCOURSE	F01	W1	N/A	C1	D1	N/A	232 m²	A
30B	TVFR B	PLATFORM	F01	W1	N/A	C1	D1	N/A	246 m²	A
31	TVCR	CONCOURSE	F01	W1	N/A	C1	D1	5.0 x 5.0 x 2.5	30 m²	A
31A	TVCR A	CONCOURSE	F01	W1	N/A	C1	D1	5.0 x 5.0 x 2.5	24 m²	A
33	RCC	PLATFORM	F01	W1	N/A	C1	D1	2.5 x 2.5 x 2.8	7 m²	A
33A	RCC A	CONCOURSE	F01	W1	N/A	C1	D1	2.5 x 2.5 x 2.8	8 m²	A
34	ESMR	PLATFORM	F01	W1	N/A	C1	D1	1.7 x 3.4 x 2.2	6 m²	A
34B	ESMR B	CONCOURSE	F01	W1	N/A	C1	D1	1.7 x 3.4 x 2.2	23 m²	A
35	SPR	PLATFORM	F01	W1	N/A	C1	D1	2.5 x 2.5 x 2.8	52 m²	A
35A	SPR A	PLATFORM	F01	W1	N/A	C1	D1	2.5 x 2.5 x 2.8	30 m²	A
36	SWC	CONCOURSE	F07	W1	B2	C1	D1	2.8 x 2.8 x 2.8	12 m²	A
37	JAN	CONCOURSE	F01	W1	N/A	C1	D1	3.25 x 3.25 x 2.8	17 m²	A
38	GBR	CONCOURSE	F01	W1	N/A	C1	D1	3.0 x 3.0 x 2.8	10 m²	A
39	CS	CONCOURSE	F01	W1	N/A	C1	D1	2.5 x 2.0 x 2.8	10 m²	A
40	PS	PLATFORM	F01	W1	N/A	C1	D1	2.5 x 2.0 x 2.8	11 m²	A
42	CR	CONCOURSE	F05	W1	B1	C1	D1	5.0 x 4.0 x 2.8	30 m²	A
43	HVAC	PLATFORM	F01	W1	B1	C1	D1	N/A	44 m²	A
43A	HVAC A	CONCOURSE	F01	W1	B1	C1	D1	N/A	99 m²	A
43B	HVAC B	CONCOURSE	F01	W1	B1	C1	D1	N/A	48 m²	A
44	PULL	PLATFORM	F01	W1	B1	C1	D1	N/A	20 m²	A
44A	PULLA	PLATFORM	F01	W1	B1	C1	D1	N/A	17 m²	A
45	PWC	CONCOURSE	F07	W1	N/A	C1	D1	2.8 x 2.8 x 2.8	20 m²	N/A
47	WSR	CONCOURSE	F01	W1	N/A	C1	D1	N/A	8 m²	A
60	TSR	CONCOURSE	F02	W3	B1	C1	D1	3.0 x 4.0 x 2.8	12 m²	A
61	SO-RECP	CONCOURSE	F05	W1	B1	C2	D1	4.0 x 3.0 x 2.8	12 m²	A
62	SO-BPIWS	CONCOURSE	F05	W1	B1	C2	D1	5.0 x 4.0 x 2.8	24 m²	A
63	SO-KIDA	CONCOURSE	F05	W1	B1	C2	D1	6.0 x 3.0 x 2.8	20 m²	A

STATION PLAZA PROGRAMME		
PROGRAMME REQUIREMENTS	REQUIRED	PROVIDED
BIKE RACKS	12	12
BIKE PARKADE	0	0
BIKETO PARKING	2	2
TRANSIT POLICE PARKING	1	1
STATION IDENTIFICATION & COMMUNITY INFORMATION MONOLITH	2	2
AUTOMATIC ASSURED RECEIPTIVITY UNIT (AARU)	1	1
TRANSILINK COMMERCIAL FIBRE OPTIC VAULT (FOCS)	1	1
SETBACK TO BROADWAY PROPERTY LINE (MIN.)	6.0m	6.0m
SETBACK TO FLANKING STREET PROPERTY LINE (MIN.)	3.0m (Main St)	10.5m (Main St)

FINISHES AND ABBREVIATIONS		
FINISH	DESCRIPTION	GENERAL LOCATION
BASE		
B1	RUBBER BASE	ANCILLARY AND SERVICE ROOMS
B2	PORCELAIN BASE - 100 HIGH UNGLAZED COVE PORCELAIN TILE	ANCILLARY AND SERVICE ROOMS
CEILING		
C1	PAINT	ANCILLARY AND SERVICE ROOMS
C2	SUSPENDED CEILING - ACOUSTIC TILE	ANCILLARY AND SERVICE ROOMS
C3	SUSPENDED CEILING - ACOUSTIC PERFORATED METAL PANELS	PUBLIC AREAS - CONCOURSE / PLATFORM
C4	SUSPENDED CEILING - NON PERFORATED METAL PANELS	PUBLIC AREAS - CONCOURSE / PLATFORM
C5	WOOD - CROSS LAMINATED TIMBER PANELS (CLT)	PUBLIC AREAS - HEADHOUSES
C6	METAL PANELS - FACTORY FINISH ALUMINUM PANELS	PUBLIC AREAS - CANOPIES
DOOR		
D1	PAINT	ANCILLARY AND SERVICE ROOMS
FLOOR		
F01	STEEL TROWELED CONCRETE, SEALED	ANCILLARY AND SERVICE ROOMS
F02	ELECTROLYTE RESISTANT PAINT - CHEMICAL (ACID) RESISTANT EPOXY	ANCILLARY AND SERVICE ROOMS
F03	CEMENTITIOUS WATERPROOFING	ANCILLARY AND SERVICE ROOMS
F04	NON CONDUCTIVE EPOXY FLOORING	ANCILLARY AND SERVICE ROOMS
F05	SHEET VINYL	ANCILLARY AND SERVICE ROOMS
F06	STATIC CONDUCTIVE SHEET VINYL	ANCILLARY AND SERVICE ROOMS
F07	FLOOR TILE 0: UNGLAZED PORCELAIN TILES	ANCILLARY AND SERVICE ROOMS
F08	FLOOR TILE 1: LARGE FORMAT PORCELAIN TILES 300x600 mm	PUBLIC AREAS - HEADHOUSES / CONCOURSE / PLATFORM
F09	FLOOR TILE 2: LARGE FORMAT PORCELAIN TILES 300x600 mm	PUBLIC AREAS - DESIGNATED WAITING AREAS (DWA)
F10	FLOOR TILE 3: TACTILE WARNING TILE FOR VISUALLY IMPAIRED	PUBLIC AREAS - HEADHOUSES / CONCOURSE
F11	FLOOR TILE 4: PLATFORM EDGE TILES	PUBLIC AREAS - PLATFORM
F12	FLOOR TILE 5: WAYFINDING TILE FOR VISUALLY IMPAIRED	PUBLIC AREAS - CONCOURSE / PLATFORM
F13	GRANITE	PUBLIC AREAS - STATION PLAZA
WALL		
W1	PAINT	ANCILLARY AND SERVICE ROOMS
W2	GLAZED AND PAINTED	ANCILLARY AND SERVICE ROOMS
W3	ELECTROLYTE RESISTANT PAINT	ANCILLARY AND SERVICE ROOMS
W4	GLAZED PORCELAIN TILES	ANCILLARY AND SERVICE ROOMS
W5	LARGE FORMAT PORCELAIN TILES 300x600 mm	PUBLIC AREAS - CONCOURSE / PLATFORM
W6	ARCHITECTURAL CONCRETE	PUBLIC AREAS - HEADHOUSES
W7	GLASS REBER REINFORCED CONCRETE PANELS	PUBLIC AREAS - HEADHOUSES

- GENERAL NOTES**
- FINAL ELEVATIONS TO BE CONFIRMED DURING DETAIL DESIGN.
 - FINISHES ARE COMPLIANT PER APPENDIX A UNLESS OTHERWISE NOTED.
 - ROOM DESCRIPTIONS AND ROOM AREAS ARE PER PA REQUIREMENTS.

REGISTRATION

CONSULTANTS

KEY PLAN

PROJECT

DRAWING INFORMATION

CONTRACT NUMBER

BROADWAY SUBWAY PROJECT

DRW BY J.J.
DES BY O.O.
CHK BY S.E.
APR BY C.H.

XXXX-XX
PROJECT NUMBER
126436
SHEET TITLE



TRANSILINK
400 - 287 Nelson's Court New
Westminster, BC V3L 0E7 Canada
Tel: 778.375.7500 Fax:
778.375.7510

DESIGN DRAWINGS
MOUNT PLEASANT STATION
ARCHITECTURAL
SCHEDULES

DRAWING NUMBER
126436-TS-STMP-IG-A0001

ISSUE/REVISION	REFERENCES
DAR 10/28/20 S.E. ISSUED FOR INITIATING DESIGN SUBMISSION #1 C.H.	
DATE BY DESCRIPTION APPR	

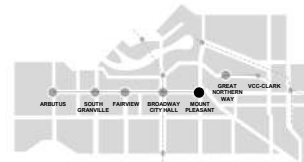


CONTEXT PLAN 1
A1100
10 0 10 20 30 40m
1:1000

ISSUE/REVISION		REFERENCES	
DATE	BY	DESCRIPTION	APPR
10/28/20	S.E.	ISSUED FOR INITIATING DESIGN SUBMISSION #1	C.H.



REGISTRATION CONSULTANTS KEY PLAN



PROJECT
BROADWAY SUBWAY PROJECT

TRANSLINK
400 - 287 Nelson's Court New
Westminster, BC V3L 0E7 Canada
Tel: 778.375.7500 Fax:
778.375.7510

DRAWING INFORMATION

DRW BY	J.J.
DES BY	O.O.
CHK BY	S.E.
APR BY	C.H.

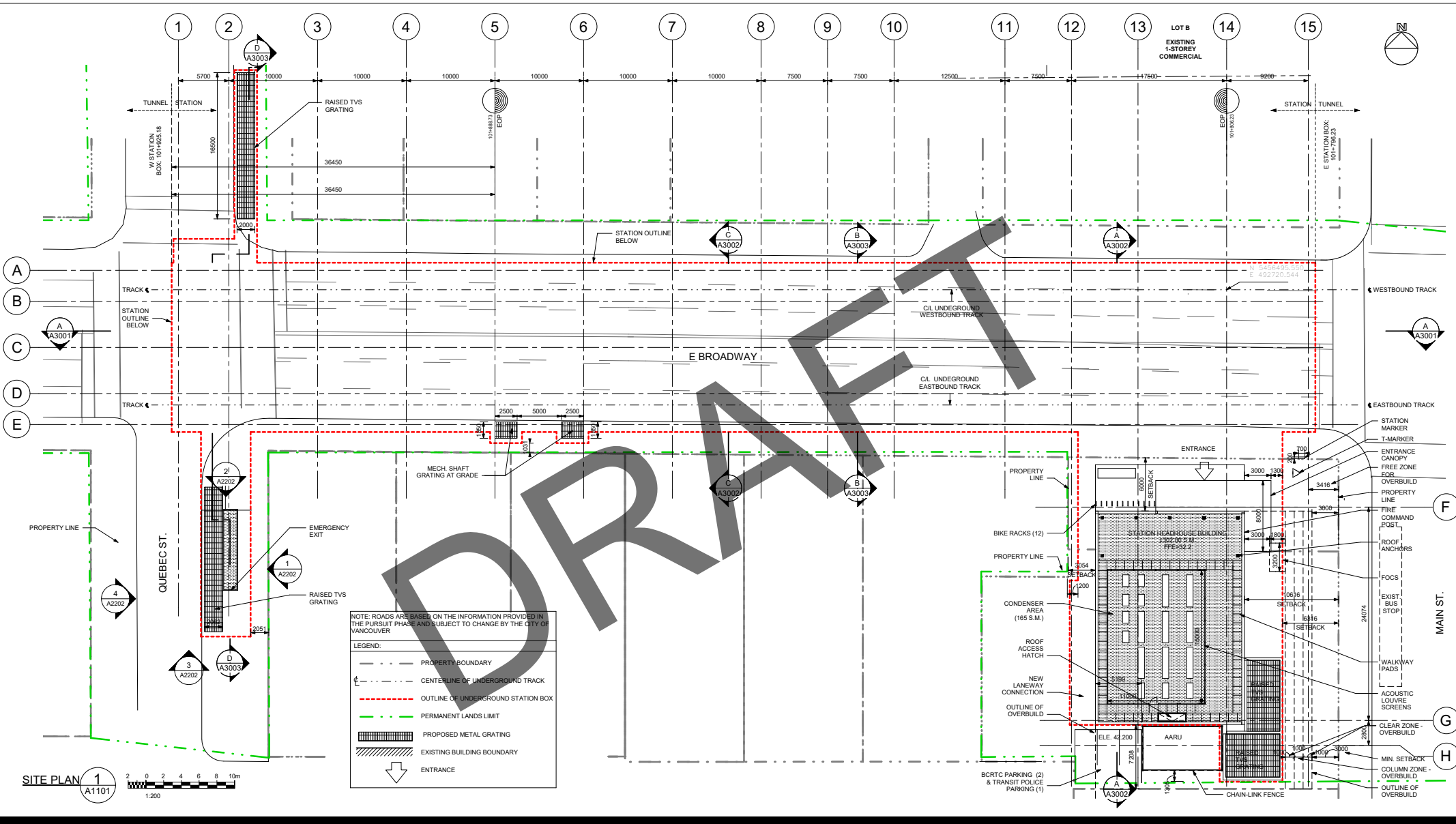
CONTRACT NUMBER
XXXXX-XX

PROJECT NUMBER
126436

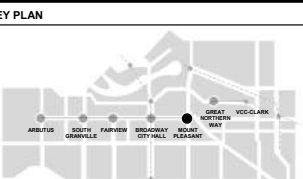
SHEET TITLE
DESIGN DRAWINGS
MOUNT PLEASANT STATION
ARCHITECTURAL
CONTEXT PLAN

DRAWING NUMBER
126436-TS-STMP-IG-A1100

ANSI D 598.96mm x 843.50mm

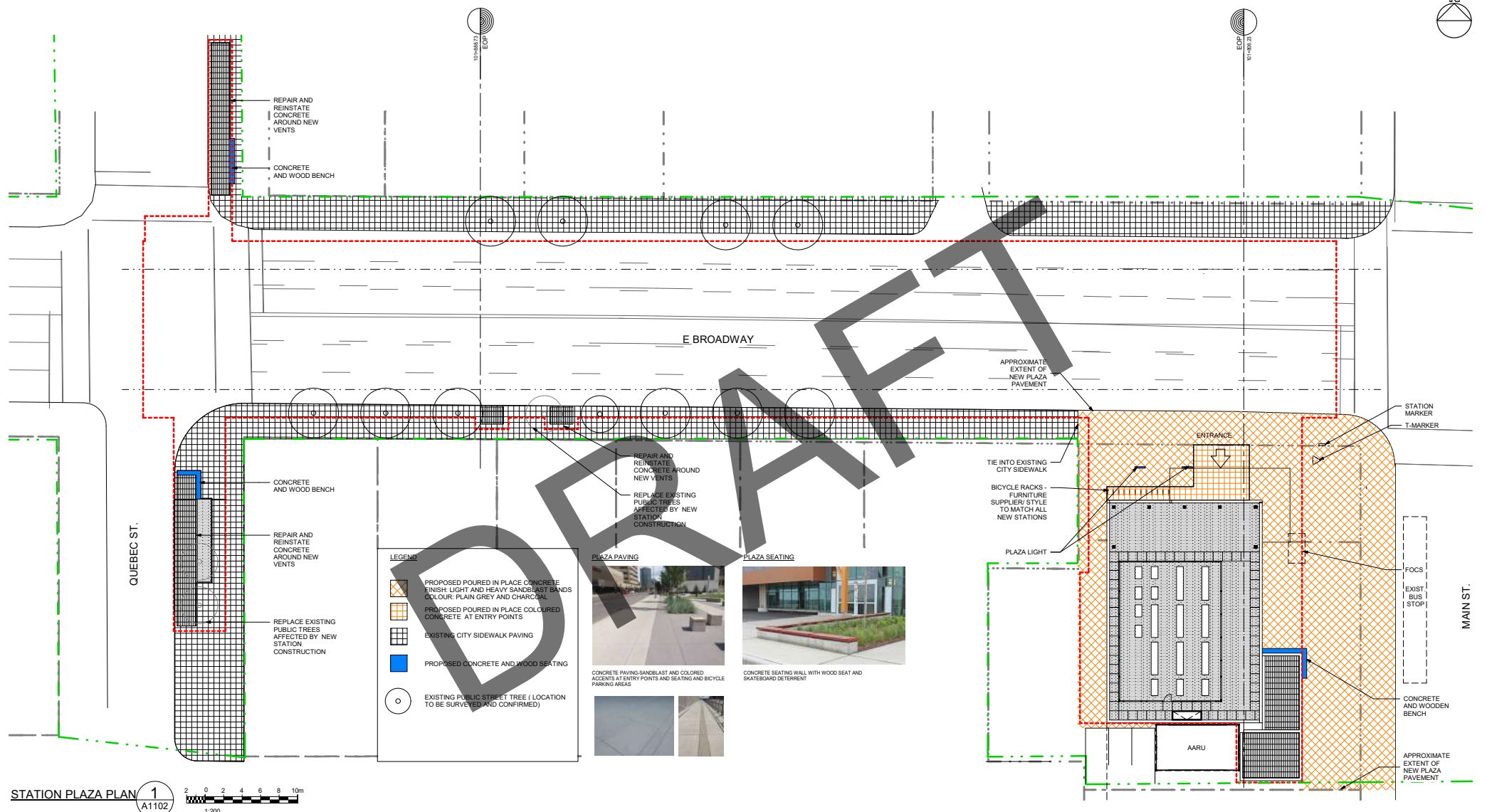


ISSUE/REVISION		REFERENCES	
DATE	BY	DESCRIPTION	APPR
10/28/20	S.E.	ISSUED FOR INITIATING DESIGN SUBMISSION #1	C.H.



REGISTRATION	CONSULTANTS	KEY PLAN	PROJECT	DRAWING INFORMATION	CONTRACT NUMBER
			BROADWAY SUBWAY PROJECT	DRW BY: J.J. DES BY: O.O. CHK BY: S.E. APR BY: C.H.	XXXX-XX PROJECT NUMBER 126436
			TRANS LINK 400 - 287 Nelson's Court New Westminster, BC V3L 0E7 Canada Tel: 778.375.7500 Fax: 778.375.7510		SHEET TITLE DESIGN DRAWINGS MOUNT PLEASANT STATION ARCHITECTURAL SITE PLAN DRAWING NUMBER 126436-TS-STMP-IG-A1101

ANSI D 598.90mm x 863.50mm
 10/28/20 10:29:26 AM
 C:\Users\jg\OneDrive\Documents\Bridgeway\20200701\STMP-IG-A-CENTRAL STATION\MAIN\A



STATION PLAZA PLAN 1
 A1102
 1:200

ISSUE/REVISION		REFERENCES	



PROJECT
BROADWAY SUBWAY PROJECT

TRANS LINK
 400 - 287 Nelson's Court New
 Westminster, BC V3L 0E7 Canada
 Tel: 778.375.7500 Fax: 778.375.7510

DRAWING INFORMATION

DRW BY	J.J.
DES BY	O.O.
CHK BY	S.E.
APR BY	C.H.

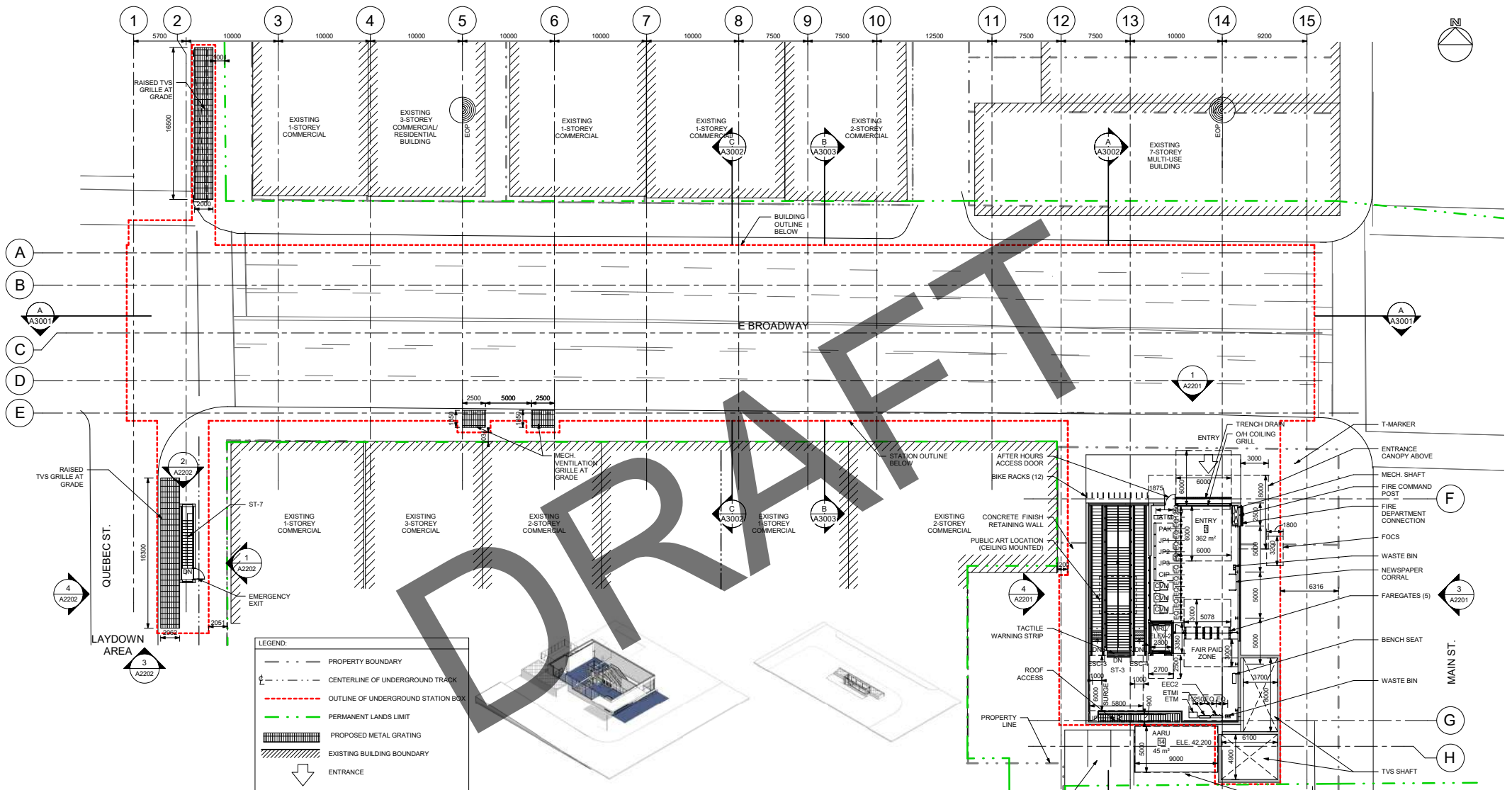
CONTRACT NUMBER
XXXXX-XX

PROJECT NUMBER
126436

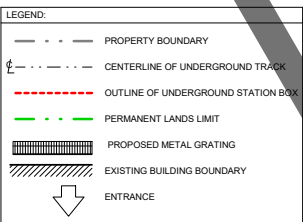
SHEET TITLE
DESIGN DRAWINGS
MOUNT PLEASANT STATION
ARCHITECTURAL
STATION PLAZA PLAN

DRAWING NUMBER
126436-TS-STMP-IG-A1102

ANSI ID 598,90mm x 843,80mm



DRAFT



ISOMETRIC - ENTRANCE

ISOMETRIC - EE

ISSUE/REVISION		REFERENCES	
DATE	BY	DESCRIPTION	APPR
10/28/20	S.E.	ISSUED FOR INITIATING DESIGN SUBMISSION #1	C.H.L.



REGISTRATION CONSULTANTS KEY PLAN

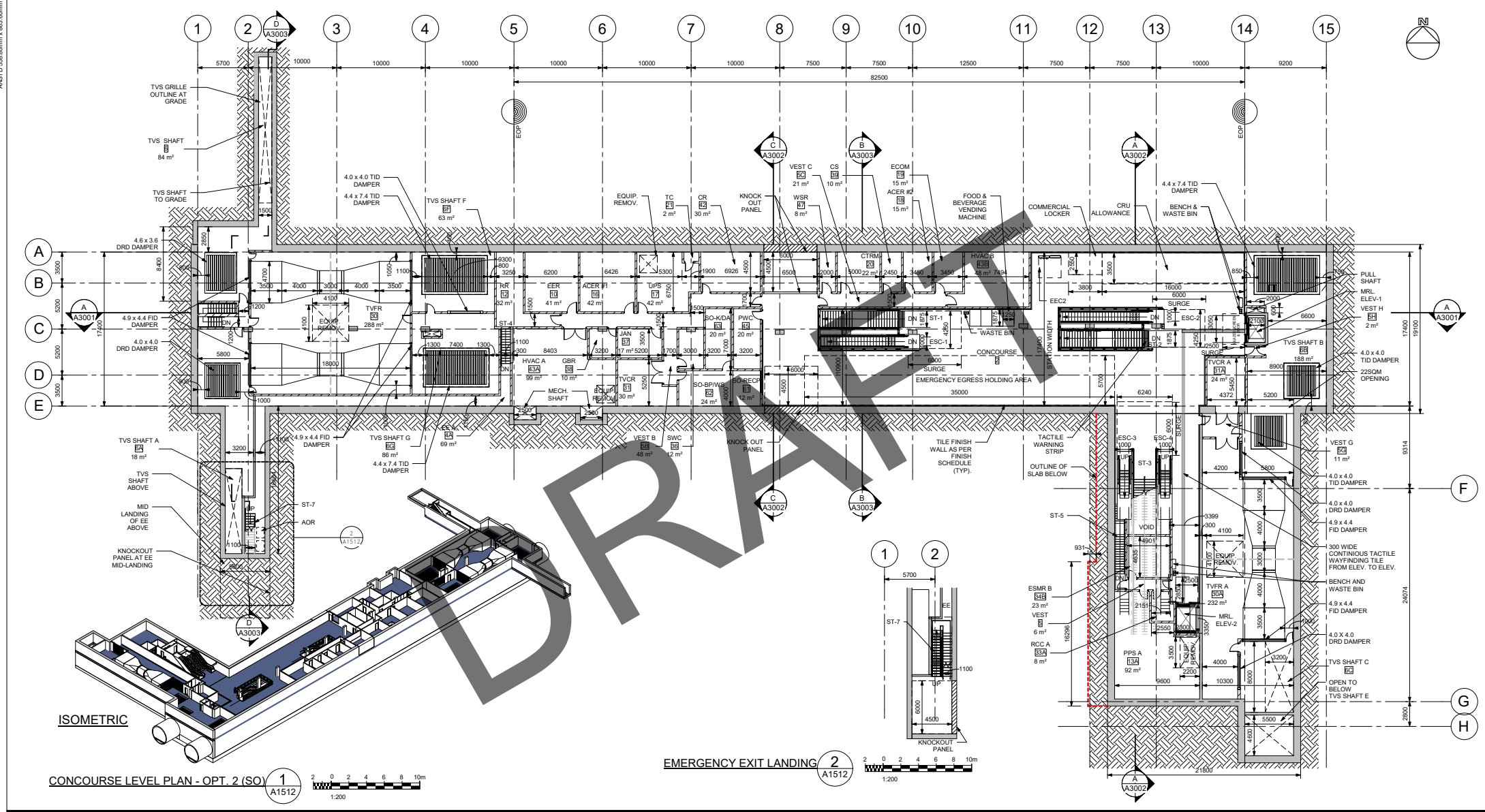
PROJECT: BROADWAY SUBWAY PROJECT

CONTRACT NUMBER: XXXXX-XX
PROJECT NUMBER: 126436
SHEET TITLE: DESIGN DRAWINGS MOUNT PLEASANT STATION ARCHITECTURAL GROUND LEVEL PLAN
DRAWING NUMBER: 126436-TS-STMP-IG-A1210

DRAWING INFORMATION:
DRW BY: J.J.
DES BY: O.O.
CHK BY: S.E.
APR BY: C.H.

TRANS LINK
400 - 287 Nelson's Court New
Westminster, BC V3L 0E7 Canada
Tel: 778.375.7500 Fax: 778.375.7510

ANSI D 598.90mm x 863.50mm



ISOMETRIC

CONCOURSE LEVEL PLAN - OPT. 2 (SO) 1 A1512

EMERGENCY EXIT LANDING 2 A1512

ISSUE/REVISION		REFERENCES	
DATE	BY	DESCRIPTION	APPR
10/28/20	S.E.	ISSUED FOR INITIATING DESIGN SUBMISSION #1	C.H.



REGISTRATION CONSULTANTS KEY PLAN

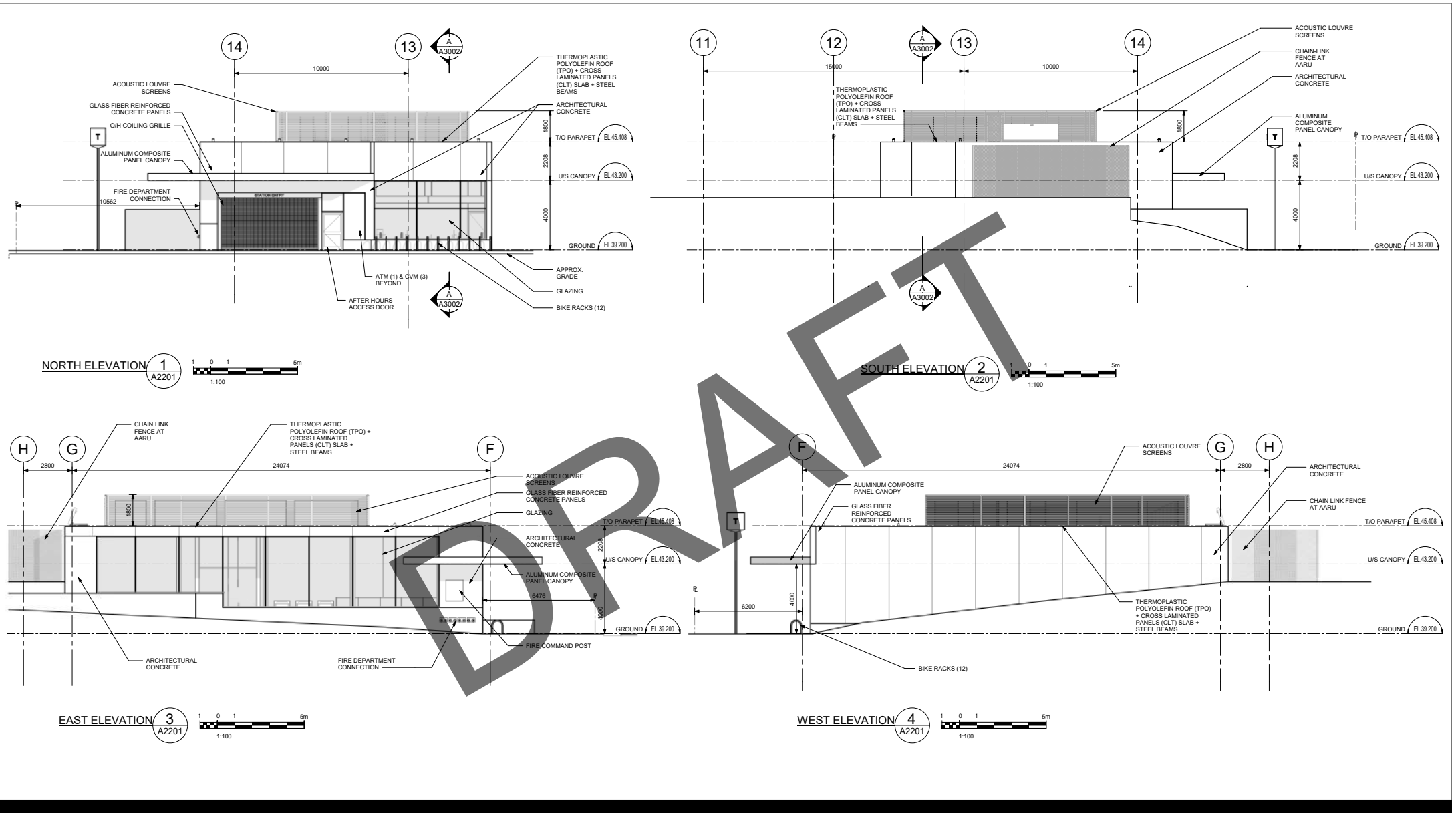
PROJECT BROADWAY SUBWAY PROJECT

CONTRACT NUMBER XXXX-XX
PROJECT NUMBER 126436
SHEET TITLE DESIGN DRAWINGS MOUNT PLEASANT STATION ARCHITECTURAL CONCOURSE LEVEL PLAN
DRAWING NUMBER 126436-TS-STMP-IG-A1512

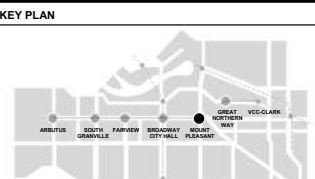
DRAWING INFORMATION
DRW BY J.J.
DES BY O.O.
CHK BY S.E.
APR BY C.H.

TRANS LINK
400 - 287 Nelson's Court New Westminster, BC V3L 0E7 Canada
Tel: 778.375.7500 Fax: 778.375.7510

ANSI D 598.96mm x 863.60mm



ISSUE/REVISION		REFERENCES	
DATE	BY	DESCRIPTION	APPR
10/28/20	S.E.	ISSUED FOR INITIATING DESIGN SUBMISSION #1	C.H.



PROJECT
BROADWAY SUBWAY PROJECT

TRANSLINK
 400 - 287 Nelson's Court New
 Westminster, BC V3L 0E7 Canada
 Tel: 778.375.7500 Fax:
 778.375.7510

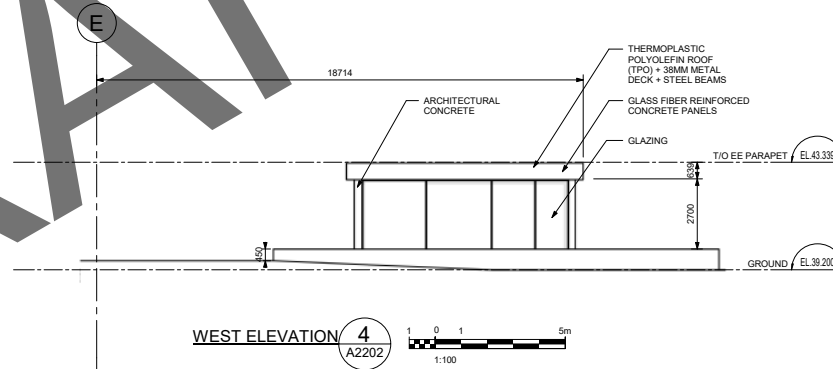
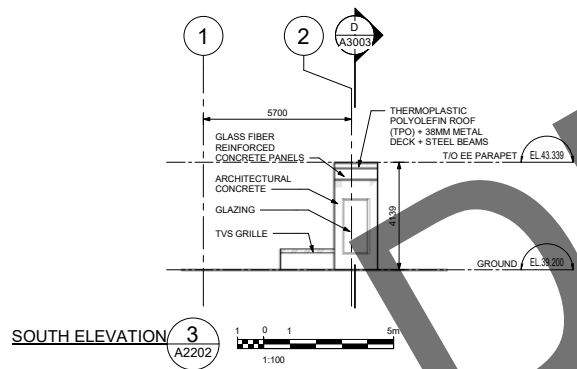
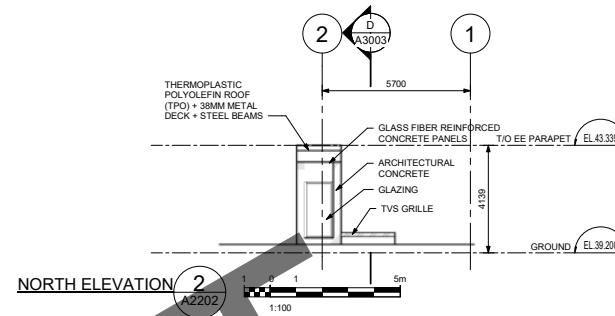
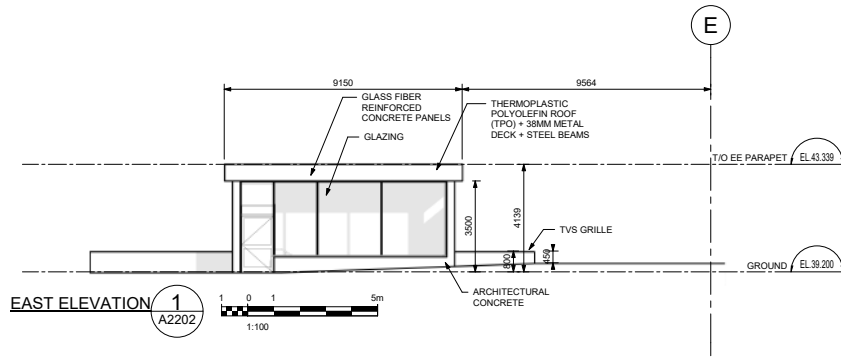
DRAWING INFORMATION	
DRW BY	J.J.
DES BY	O.O.
CHK BY	S.E.
APR BY	C.H.

CONTRACT NUMBER
XXXXX-XX

PROJECT NUMBER
126436

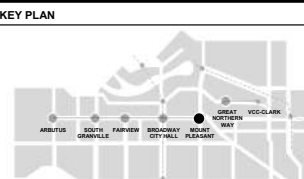
SHEET TITLE
DESIGN DRAWINGS
MOUNT PLEASANT STATION
ARCHITECTURAL
ELEVATIONS - ENTRANCE

DRAWING NUMBER
126436-TS-STMP-IG-A2201



DRAFT

ISSUE/REVISION		REFERENCES	
DATE	BY	DESCRIPTION	APPR
10/28/20	S.E.	ISSUED FOR INITIATING DESIGN SUBMISSION #1	C.H.



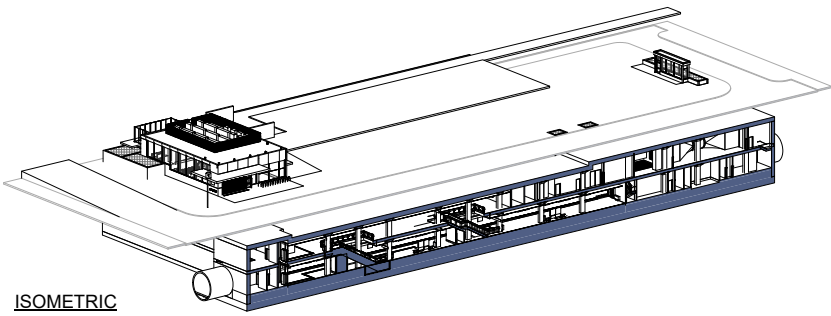
PROJECT
BROADWAY SUBWAY PROJECT

TRANS LINK
400 - 287 Nelson's Court New
Westminster, BC V3L 0E7 Canada
Tel: 778.375.7500 Fax:
778.375.7510

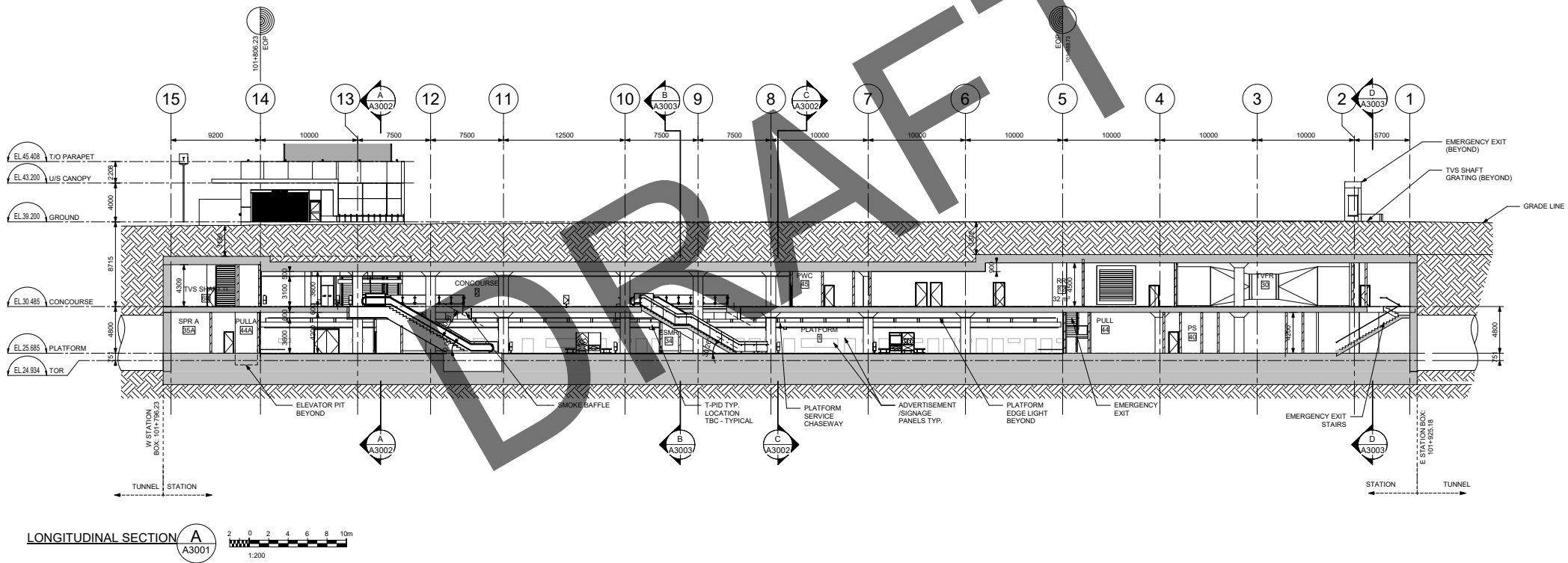
DRAWING INFORMATION	
DRW BY	J.J.
DES BY	O.O.
CHK BY	S.E.
APR BY	C.H.

CONTRACT NUMBER	
XXXX-XX	PROJECT NUMBER
126436	SHEET TITLE
DESIGN DRAWINGS	MOUNT PLEASANT STATION
ARCHITECTURAL	ELEVATIONS - EMERGENCY EXIT
DRAWING NUMBER	126436-TS-STMP-IG-A2202

ANSI D 558.90mm x 863.50mm

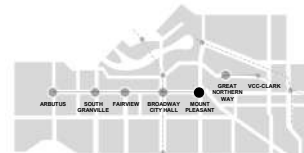


ISOMETRIC



LONGITUDINAL SECTION A A3001
 1:200
 0 2 4 6 8 10m

ISSUE/REVISION		REFERENCES	
DATE	BY	DESCRIPTION	APPR
10/28/20	S.E.	ISSUED FOR INITIATING DESIGN SUBMISSION #1	C.H.



PROJECT
BROADWAY SUBWAY PROJECT

TRANS LINK
 400 - 287 Nelson's Court New
 Westminster, BC V3L 0E7 Canada
 Tel: 778.375.7500 Fax: 778.375.7510

DRAWING INFORMATION	
DRW BY	J.J.
DES BY	O.O.
CHK BY	S.E.
APR BY	C.H.

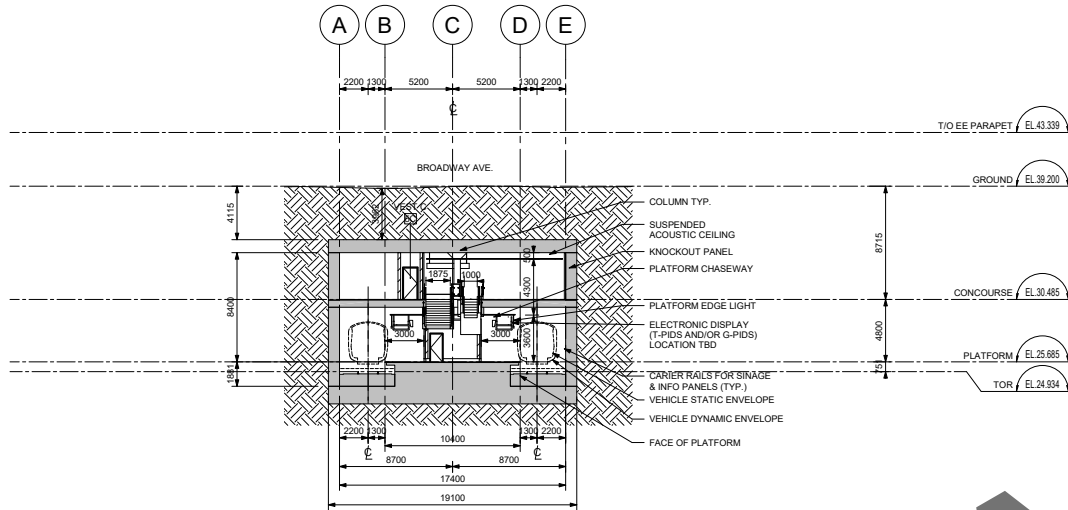
CONTRACT NUMBER
 XXXXX-XX

PROJECT NUMBER
 126436

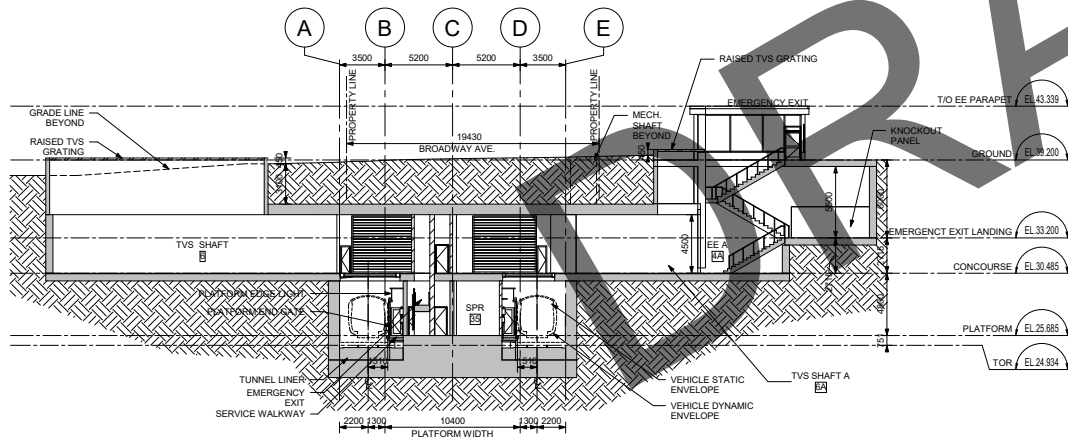
SHEET TITLE
 DESIGN DRAWINGS
 MOUNT PLEASANT STATION
 ARCHITECTURAL
 LONGITUDINAL SECTION

DRAWING NUMBER
 126436-TS-STMP-IG-A3001

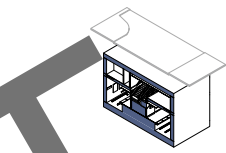
ANSI D 558.50mm x 863.50mm
 L:\Projects\2020\10\29\21\04\1\126436-TS-STMP-IG-A-CENTRAL STATION\DWG\126436-TS-STMP-IG-A-CENTRAL STATION\DWG\126436-TS-STMP-IG-A3003.dwg
 2020/10/29 2:10:41 PM
 User: jhughes



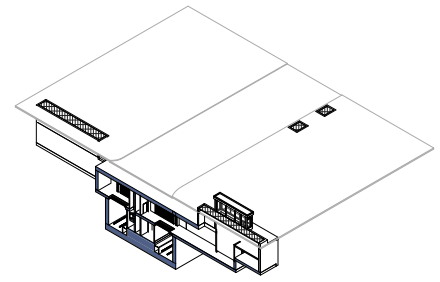
CROSS SECTION B
 A3003
 1:200



CROSS SECTION D
 A3003
 1:200

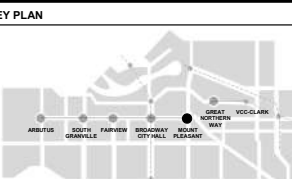


ISOMETRIC-B



ISOMETRIC-D

ISSUE/REVISION		REFERENCES	
DATE	BY	DESCRIPTION	APPR
10/28/20	S.E.	ISSUED FOR INITIATING DESIGN SUBMISSION #1	C.H.



PROJECT
BROADWAY SUBWAY PROJECT

TRANS LINK
 400 - 287 Nelson's Court New
 Westminster, BC V3L 0E7 Canada
 Tel: 778.375.7500 Fax:
 778.375.7510

DRAWING INFORMATION	
DRW BY	J.J.
DES BY	O.O.
CHK BY	S.E.
APR BY	C.H.

CONTRACT NUMBER
 XXXXX-XX

PROJECT NUMBER
 126436

SHEET TITLE
 DESIGN DRAWINGS
 MOUNT PLEASANT STATION
 ARCHITECTURAL
 CROSS SECTIONS - B & D

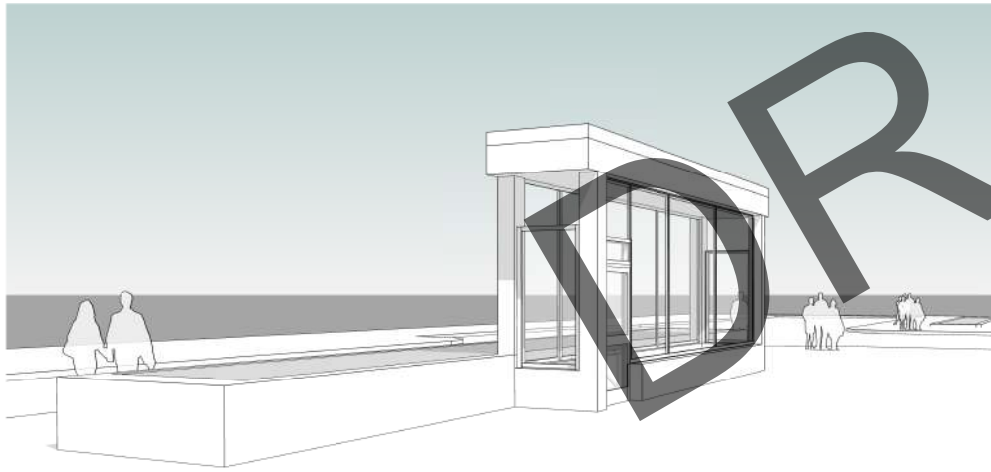
DRAWING NUMBER
 126436-TS-STMP-IG-A3003



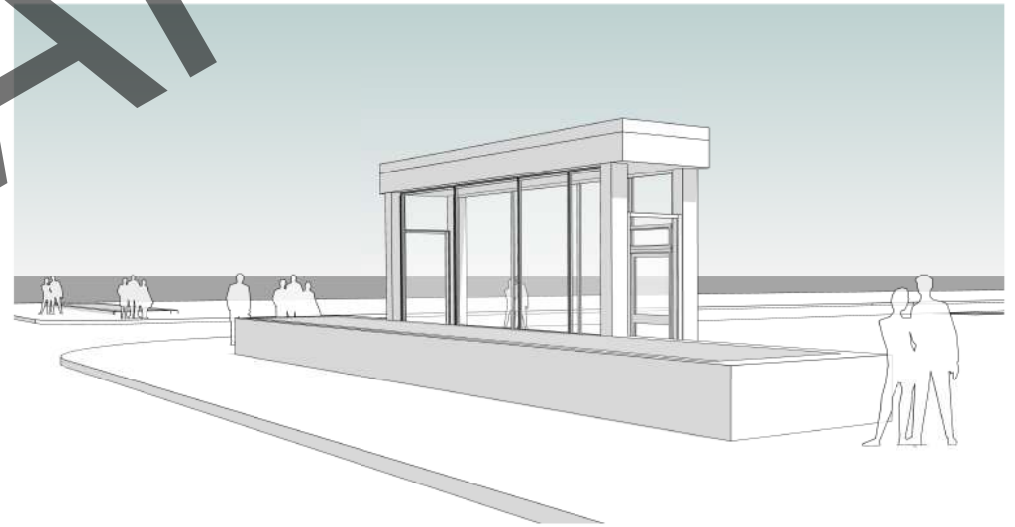
1
EXTERIOR - NORTHEAST HEADHOUSE
A6201



2
EXTERIOR - NORTHWEST HEADHOUSE
A6201



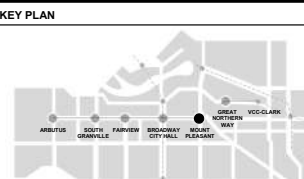
3
EXTERIOR - SOUTHEAST EE
A6201



4
EXTERIOR - SOUTHWEST EE
A6201

DRAFT

ISSUE/REVISION		REFERENCES	
DATE	BY	DESCRIPTION	APPR
10/28/20	S.E.	ISSUED FOR INITIATING DESIGN SUBMISSION #1	C.H.



PROJECT
BROADWAY SUBWAY PROJECT
 TRANSLINK
 400 - 287 Nelson's Court New
 Westminster, BC V3L 0E7 Canada
 Tel: 778.375.7500 Fax:
 778.375.7510

DRAWING INFORMATION	
DRW BY	J.J.
DES BY	O.O.
CHK BY	S.E.
APR BY	C.H.

CONTRACT NUMBER
XXXXX-XX
PROJECT NUMBER
126436
SHEET TITLE
 DESIGN DRAWINGS
 MOUNT PLEASANT STATION
 ARCHITECTURAL
 EXTERIOR PERSPECTIVES
DRAWING NUMBER
 126436-TS-STMP-IG-A6201



1
A6202
INTERIOR - CONCOURSE LEVEL



2
A6202
INTERIOR - CONCOURSE LEVEL VT



3
A6202
INTERIOR - HEADHOUSE ENTRANCE



4
A6202
INTERIOR - PLATFORM LEVEL

DRAFT

ISSUE/REVISION		REFERENCES	
DATE	DESCRIPTION	APPR	
10/28/20	ISSUED FOR INITIATING DESIGN SUBMISSION #1	C.H.	



PROJECT
BROADWAY SUBWAY PROJECT
 TRANSLINK
 400 - 287 Nelson's Court New
 Westminster, BC V3L 0E7 Canada
 Tel: 778.375.7500 Fax:
 778.375.7510

DRAWING INFORMATION	
DRW BY	J.J.
DES BY	O.O.
CHK BY	S.E.
APR BY	C.H.

CONTRACT NUMBER
 XXXXX-XX
PROJECT NUMBER
 126436
SHEET TITLE
 DESIGN DRAWINGS
 MOUNT PLEASANT STATION
 ARCHITECTURAL
 INTERIOR PERSPECTIVES
DRAWING NUMBER
 126436-TS-STMP-IG-A6202

ANSI D 22" x 34"

PLAZA PAVING



CONCRETE PAVING-SANDBLAST AND COLORED ACCENTS AT ENTRY POINTS AND SEATING AND BICYCLE PARKING AREAS



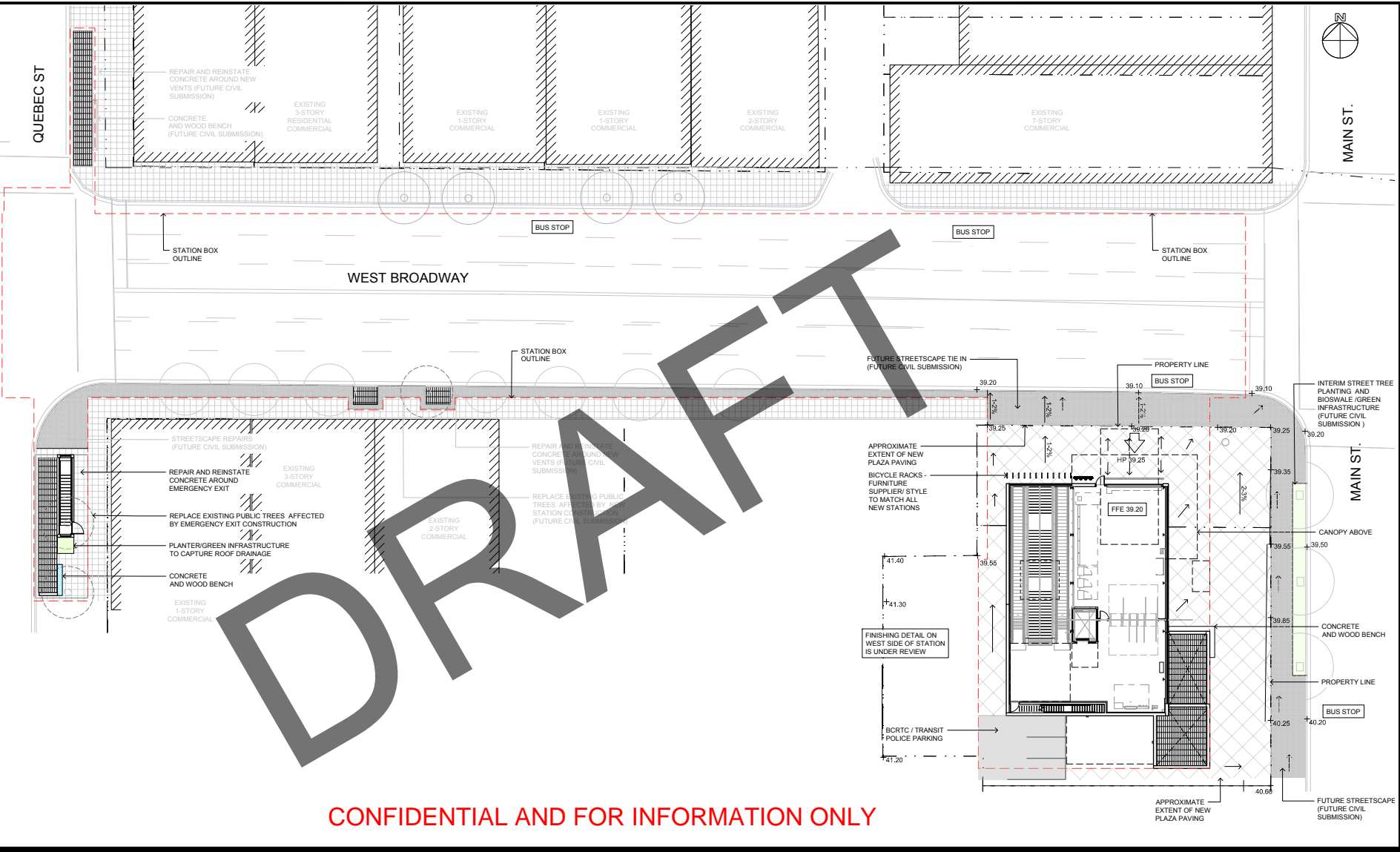
PLAZA SEATING



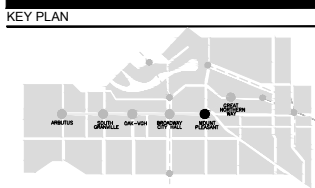
CONCRETE SEATING WALL WITH WOOD SEAT AND SKATEBOARD DETERRENT

LEGEND

- NEW POURED IN PLACE CONCRETE AT STATION FINISH: LIGHT AND HEAVY SANDBLAST BANDS COLOUR: PLAIN GREY/CHARCOAL
- FUTURE STREETSCAPE REPAIR AND REHABILITATION (FUTURE CIVIL SUBMISSION)
- EXISTING CITY SIDEWALK PAVING TO REMAIN
- PROPOSED CONCRETE AND WOOD SEATING
- EXISTING PUBLIC STREET TREE (LOCATION TO BE SURVEYED AND CONFIRMED -FUTURE SEPARATE SUBMISSION TO CITY)
- PROPOSED STREET TREE (FUTURE CIVIL SUBMISSION)
- + 39.0 PRELIMINARY SPOT GRADE
- DRAINAGE DIRECTION



CONFIDENTIAL AND FOR INFORMATION ONLY



KEY PLAN	ISSUE/REVISION	REFERENCES	ENGINEER'S SEAL
B	2020-12-17	CZ ISSUED FOR INFO	EW REFERENCES
A	2020-11-12	CZ ISSUED FOR IDR 1	EW REFERENCES
IR	DATE	BY DESCRIPTION	APPR REFERENCES

PROJECT	DB CONTRACTOR	DRAWING INFORMATION	CONTRACT NUMBER
BROADWAY Subway Project	acciona	DRW BY CZ DES BY EW CHK BY CH APR BY EW	5508501 PROJECT NUMBER BSP - 126436 SHEET TITLE
IBI GROUP 7th Floor - 55 St. Clair Avenue West Toronto ON M4V 2V7 Canada tel 416 596 1930 fax 416 596 0644 ibigroup.com	BRITISH COLUMBIA Ministry of Transportation and Infrastructure	SCALE 0.0 1:200 10.0	DESIGN DRAWINGS MOUNT PLEASANT STATION LANDSCAPE GROUND LEVEL PLAN DRAWING NUMBER BSP - 70700 - MPIG - 4LDD - 1000