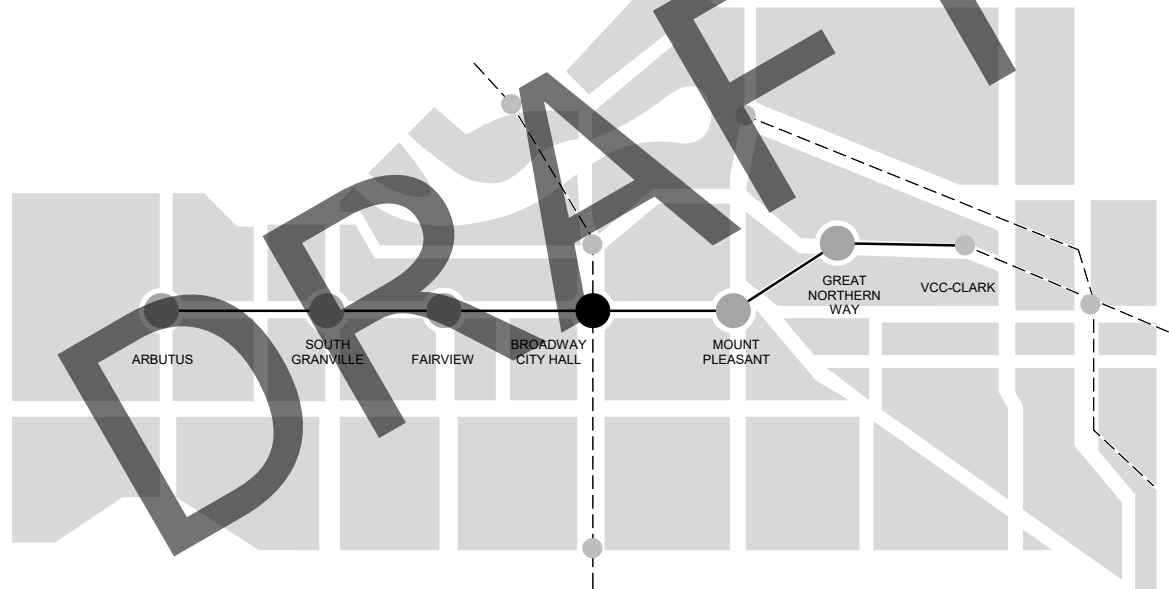


ANSI D 558.0mm x 863.00mm

# BROADWAY SUBWAY PROJECT (BSP)

## INITIATING DESIGN SUBMISSION #1 BROADWAY CITY HALL STATION



Ministry of  
Transportation  
and Infrastructure



acciona



Last Printed: 2020-11-12 12:10 PM  
Filename: BM\_300/125638 - Broadway Subway 2020/11/12 CH-CA-CENTRAL STATION MMV.HX

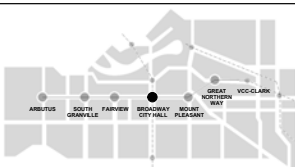
# BROADWAY SUBWAY PROJECT (BSP)

## INITIATING DESIGN SUBMISSION #1 BROADWAY CITY HALL STATION

SHEET LIST		
SHEET NUMBER		SHEET NAME
A0000		COVER SHEET AND DRAWING INDEX
A0001		SCHEDULES
A1000		CONTEXT PLAN
A1101		SITE PLAN - EXIT STAIR
A1102		SITE PLAN - EXISTING PLAZA
A1103		STATION PLAZA PLAN NORTH
A1104		STATION PLAZA PLAN SOUTH
A1211		GROUND LEVEL PLAN - ENTRY
A1212		GROUND LEVEL PLAN - SOUTH EE
A1311		MEZZANINE LEVEL PLAN
A1411		EXISTING PLATFORM LEVEL PLAN - TVFR 2
A1412		EXISTING PLATFORM LEVEL PLAN
A1512		CONCOURSE LEVEL PLAN
A1611		PLATFORM LEVEL PLAN
A2201		ELEVATIONS - ENTRANCE
A2202		ELEVATIONS - EMERGENCY EXIT
A3001		LONGITUDINAL SECTION
A3002		GROSS SECTIONS
A3003		CROSS SECTIONS
A5001		EXTERIOR PERSPECTIVES
A6202		INTERIOR PERSPECTIVES

DRAFT

**KEY PLAN**



**ISSUE/REVISION**

DATE	BY	DESCRIPTION
11/12/20	S.E.	INITIATING DESIGN SUBMISSION #1

**REFERENCES**

APPR	REFERENCES

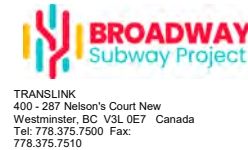
**ENGINEERS SEAL**

--	--

**CONSULTANT**



**PROJECT**



**DRAWING INFORMATION**

DRW BY	M.F.
DES BY	M.F.
CHK BY	S.E.
APR BY	C.H.

**CONTRACT NUMBER**

5508501
<b>PROJECT NUMBER</b>
BSP
<b>SHEET TITLE</b>
PRELIMINARY DESIGN DRAWINGS BROADWAY - CITY HALL STATION ARCHITECTURAL COVER SHEET AND DRAWING INDEX
<b>DRAWING NUMBER</b>
BSP-70700-CHIG-43DD-A0000

ANSI D 2024-1 (50mm x 86mm)

ROOM#	NAME	LOCATION	FLOOR FINISH	WALL FINISH	BASE FINISH	CEILING FINISH	DOOR	PA AREA	AREA	SECURED ACCESS	
1	PLATFORM CONCOURSE	PLATFORM W	F08/F09/11/F12	W5	N/A	C1/C2	D1	N/A	608 m <sup>2</sup>	N/A	
2	CONCOURSE	CONCOURSE W	F08/F09/11/F12	W5	N/A	C1	D1	N/A	1105 m <sup>2</sup>	N/A	
4	EAST EMERGENCY EXIT	MAIN ENTRANCE FIN. FLR.	F01	W1	N/A	C1	D1	N/A	24 m <sup>2</sup>	N/A	
4A	SOUTH EMERGENCY EXIT	MAIN ENTRANCE FIN. FLR.	F01	W1	N/A	C1	D1	N/A	24 m <sup>2</sup>	N/A	
5	VEST	CONCOURSE W	F01	W1	N/A	C1	D1	N/A	9 m <sup>2</sup>	A	
5A	VEST A	CONCOURSE W	F01	W1	N/A	C1	D1	N/A	19 m <sup>2</sup>	A	
5B	VEST B	CONCOURSE W	F01	W1	N/A	C1	D1	N/A	56 m <sup>2</sup>	A	
5C	VEST C	CONCOURSE W	F01	W1	N/A	C1	D1	N/A	4 m <sup>2</sup>	A	
5D	VEST D	CONCOURSE W	F01	W1	N/A	C1	D1	N/A	6 m <sup>2</sup>	A	
6A	TVS SHAFT A	CONCOURSE W	F03	W1	N/A	C1	D1	N/A	30 m <sup>2</sup>	A	
6B	TVS SHAFT B	CONCOURSE W	F03	W1	N/A	C1	D1	N/A	33 m <sup>2</sup>	A	
6C	TVS SHAFT C	CONCOURSE W	F03	W1	N/A	C1	D1	N/A	62 m <sup>2</sup>	A	
6D	TVS SHAFT D	CONCOURSE W	F03	W1	N/A	C1	D1	N/A	99 m <sup>2</sup>	A	
6E	TVS SHAFT E	CONCOURSE W	F03	W1	N/A	C1	D1	N/A	120 m <sup>2</sup>	A	
6F	TVS SHAFT F	TVFR 2 W	F03	W1	N/A	C1	D1	N/A	30 m <sup>2</sup>	A	
6G	TVS SHAFT G	TVFR 2 W	F03	W1	N/A	C1	D1	N/A	60 m <sup>2</sup>	A	
6H	TVS SHAFT H	TVFR 2 W	F03	W1	N/A	C1	D1	N/A	58 m <sup>2</sup>	A	
6I	TVS SHAFT I	TVFR 2 W	F03	W1	N/A	C1	D1	N/A	13 m <sup>2</sup>	A	
6J	TVS SHAFT J	TVFR 2 W	F03	W1	N/A	C1	D1	N/A	203 m <sup>2</sup>	A	
6K	TVS SHAFT K	CONCOURSE W	F03	W1	N/A	C1	D1	N/A	46 m <sup>2</sup>	A	
6L	TVS SHAFT L	CONCOURSE W	F03	W1	N/A	C1	D1	N/A	65 m <sup>2</sup>	A	
8	ENTRY ELEVATOR LOBBY	MAIN ENTRANCE FIN. FLR.	F08/10/F13	W5/W6	N/A	C1	D1	N/A	71 m <sup>2</sup>	A	
10	EER	CONCOURSE W	F06	W1	B1	C1	D1	7.0 x 6.0 x 4.1	43 m <sup>2</sup>	A	
11	SCR	CONCOURSE W	F06	W1	B1	C1	D1	5.0 x 4.0 x 4.1	20 m <sup>2</sup>	A	
12	RR	CONCOURSE W	F06	W1	B1	C1	D1	6.0 x 3.0 x 4.1	19 m <sup>2</sup>	A	
15	TR	PLATFORM W	F01/F04	W1	N/A	C1	D1	5.5 x 4.5 x 4.5	89 m <sup>2</sup>	A	
16	ACER 1+UPS	CONCOURSE W	F01	W1	N/A	C1	D1	7.0 x 6.0 x 3.2	42 m <sup>2</sup>	A	
17	ACER 2	CONCOURSE W	F01	W1	N/A	C1	D1	4.0 x 3.0 x 3.2	12 m <sup>2</sup>	A	
19	ECOM	CONCOURSE W	F01	W1	N/A	C1	D1	3.0 x 3.0 x 2.2	8 m <sup>2</sup>	A	
20	CTRM	CONCOURSE W	F01	W1	N/A	C1	D1	5.0 x 4.0 x 3.2	20 m <sup>2</sup>	A	
21	TC	CONCOURSE W	F01	W1	N/A	C1	D1	1.5/1.6 x 1.0 x 2.8	46 m <sup>2</sup>	A	
22	GPC	PLATFORM W	F01	W1	N/A	C1	D1	1.0 x 1.25 x 2.8	1 m <sup>2</sup>	A	
22A	GPC A	PLATFORM W	F01	W1	N/A	C1	D1	1.0 x 1.25 x 2.8	3 m <sup>2</sup>	A	
30	TVFR	TVFR 2 W	F01	W1	N/A	C1	D1	N/A	501 m <sup>2</sup>	A	
30A	TVFR A	CONCOURSE W	F01	W1	N/A	C1	D1	N/A	355 m <sup>2</sup>	A	
31	TVGR	CONCOURSE W	F01	W1	N/A	C1	D1	5.0 x 5.0 x 2.5	20 m <sup>2</sup>	A	
31A	TVGR A	CONCOURSE W	F01	W1	N/A	C1	D1	5.0 x 5.0 x 2.5	23 m <sup>2</sup>	A	
33	ESMR	PLATFORM W	F01	W1	N/A	C1	D1	2.5 x 2.5 x 2.8	9 m <sup>2</sup>	A	
33A	RCC A	CONCOURSE W	F01	W1	N/A	C1	D1	2.5 x 2.5 x 2.8	8 m <sup>2</sup>	A	
34	RCC	PLATFORM W	F01	W1	N/A	C1	D1	1.7 x 3.4 x 2.2	10 m <sup>2</sup>	A	
34A	ESMR A	CONCOURSE W	F01	W1	N/A	C1	D1	1.7 x 3.4 x 2.2	6 m <sup>2</sup>	A	
34B	ESMR B	TVFR 2 W	F01	W1	N/A	C1	D1	1.7 x 3.4 x 2.2	4 m <sup>2</sup>	A	
35	SPR	PLATFORM W	F01	W1	N/A	C1	D1	2.5 x 2.5 x 2.8	27 m <sup>2</sup>	A	
35A	SPR A	CONCOURSE W	F01	W1	N/A	C1	D1	2.5 x 2.5 x 2.8	8 m <sup>2</sup>	A	
35B	SPR B	CONCOURSE W	F01	W1	N/A	C1	D1	2.5 x 2.5 x 2.8	2 m <sup>2</sup>	A	
36	SWC	CONCOURSE W	F01	W1	N/A	C1	D1	2.8 x 2.8 x 2.8	13 m <sup>2</sup>	A	
37	JAN	CONCOURSE W	F01	W1	N/A	C1	D1	3.25 x 3.25 x 2.8	17 m <sup>2</sup>	A	
38	GBR	CONCOURSE W	F01	W1	N/A	C1	D1	3.0 x 3.0 x 2.8	9 m <sup>2</sup>	A	
40	PS	PLATFORM W	F01	W1	N/A	C1	D1	2.5 x 2.0 x 2.8	39 m <sup>2</sup>	A	
41	CRWR	CONCOURSE W	F01	W1	N/A	C1	D1	5.0 x 2.8 x 2.8	26 m <sup>2</sup>	A	
43	HVAC	CONCOURSE W	F01	W1	B1	C1	D1	N/A	130 m <sup>2</sup>	A	
43A	HVAC A	CONCOURSE W	F01	W1	B1	C1	D1	N/A	77 m <sup>2</sup>	A	
44	PULL	PLATFORM W	F01	W1	B1	C1	D1	N/A	12 m <sup>2</sup>	A	
44A	PULL A	PLATFORM W	F01	W1	B1	C1	D1	N/A	10 m <sup>2</sup>	A	
45	CS	CONCOURSE W	F01	W1	N/A	C1	D1	2.5 x 2.0 x 2.8	6 m <sup>2</sup>	A	
46	GNWC	CONCOURSE W	N/A	N/A	N/A	N/A	D1	2.8 x 2.8 x 2.8	26 m <sup>2</sup>	A	
60	TSR	CONCOURSE W	F01	W1	N/A	C1	D1	3.0 x 4.0 x 2.8	25 m <sup>2</sup>	A	
64	PHB-R	CONCOURSE W	F05	W2	B1	C1	D1	4.0 x 2.5 x 2.8	10 m <sup>2</sup>	A	
65	PHB-SO	CONCOURSE W	F05	W2	B1	C1	D1	3.0 x 2.5 x 2.8	10 m <sup>2</sup>	A	
66	PHB-B	CONCOURSE W	F05	W2	B1	C1	D1	4.5 x 4.0 x 2.8	19 m <sup>2</sup>	A	
67	PHB-M	CONCOURSE W	F05	W2	B1	C1	D1	5.0 x 4.0 x 2.8	23 m <sup>2</sup>	A	
68	PHB-I	CONCOURSE W	F05	W1	B1	C1	D1	3.0 x 3.5 x 2.8	14 m <sup>2</sup>	A	
69	PHB-O	CONCOURSE W	F05	W1	B1	C1	D1	3.0 x 1.5 x 2.8	4 m <sup>2</sup>	A	
70	PHB-HPD	CONCOURSE W	F05	W2	B1	C1	D1	3.0 x 2.5 x 2.8	9 m <sup>2</sup>	A	
71	PHB-JP	CONCOURSE W	F05	W2	B1	C1	D1	3.0 x 2.5 x 2.8	8 m <sup>2</sup>	A	
72	PHB-E	CONCOURSE W	F05	W1	B1	C1	D1	3.0 x 2.0 x 2.8	8 m <sup>2</sup>	A	
73	PHB-S	CONCOURSE W	F05	W1	B1	C1	D1	2.8 x 1.5 x 2.8	4 m <sup>2</sup>	A	
74	PHB-K	CONCOURSE W	F05	W1	B1	C1	D1	N/A	4.0 x 3.0 x 2.8	17 m <sup>2</sup>	A
75	PHB-SWC	CONCOURSE W	F01	W4	B2	C1	D1	2.8 x 2.8 x 2.8	8 m <sup>2</sup>	A	

STATION PLAZA PROGRAMME		
PROGRAMME REQUIREMENTS	REQUIRED	PROVIDED
BIKE RACKS	12	12
BIKE PARKADE	1 IN CIV DEVELOPMENT	1 IN CIV DEVELOPMENT
BCRTV PARKING	2	2
STATION POLICE PARKING	4+2	4+2
STATION IDENTIFICATION & COMMUNITY INFORMATION MONOLITH	EXISTING	EXISTING
AUTOMATIC ASSURED RECEIPTIVITY UNIT (AARU)	0	0
TRANSILINK COMMERCIAL FIBRE OPTIC VAULT (FOCS)	1	1
SETBACK TO BROADWAY PROPERTY LINE (MIN.)	N/A	N/A
SETBACK TO FLANKING STREET PROPERTY LINE (MIN.)	N/A	N/A

- GENERAL NOTES:
- FINAL ELEVATIONS TO BE CONFIRMED DURING DETAIL DESIGN.
  - FINISHES ARE COMPLIANT PER APPENDIX A UNLESS OTHERWISE NOTED. NOT IDENTIFIED IN APPENDIX A.
  - ROOM DESCRIPTIONS AND ROOM AREAS ARE PER PA REQUIREMENTS.

FINISHES AND ABBREVIATIONS		
FINISH	DESCRIPTION	GENERAL LOCATION
BASE		
B1	RUBBER BASE	ANCILLARY AND SERVICE ROOMS
B2	PORCELAIN BASE - 100 HIGH UNGLAZED COVE PORCELAIN TILE	ANCILLARY AND SERVICE ROOMS
CEILING		
C1	PAINT	ANCILLARY AND SERVICE ROOMS
C2	SUSPENDED CEILING - ACOUSTIC TILE	ANCILLARY AND SERVICE ROOMS
C3	SUSPENDED CEILING - ACOUSTIC PERFORATED METAL PANELS	PUBLIC AREAS - CONCOURSE / PLATFORM
C4	SUSPENDED CEILING - NON PERFORATED METAL PANELS	PUBLIC AREAS - CONCOURSE / PLATFORM
C5	WOOD - CROSS LAMINATED TIMBER PANELS (CLT)	PUBLIC AREAS - HEADHOUSES
C6	METAL PANELS - FACTORY FINISH ALUMINUM PANELS	PUBLIC AREAS - CANOPIES
DOOR		
D1	PAINT	ANCILLARY AND SERVICE ROOMS
FLOOR		
F01	STEEL TROWELED CONCRETE, SEALED	ANCILLARY AND SERVICE ROOMS
F02	ELECTROLYTE RESISTANT PAINT - CHEMICAL (ACID) RESISTANT EPOXY	ANCILLARY AND SERVICE ROOMS
F03	CEMENTITIOUS WATERPROOFING	ANCILLARY AND SERVICE ROOMS
F04	NON CONDUCTIVE EPOXY FLOORING	ANCILLARY AND SERVICE ROOMS
F05	SHEET VINYL	ANCILLARY AND SERVICE ROOMS
F06	STATIC CONDUCTIVE SHEET VINYL	ANCILLARY AND SERVICE ROOMS
F07	FLOOR TILE 0: UNGLAZED PORCELAIN TILES	ANCILLARY AND SERVICE ROOMS
F08	FLOOR TILE 1: LARGE FORMAT PORCELAIN TILES 300x600 mm	PUBLIC AREAS - HEADHOUSES / CONCOURSE / PLATFORM
F09	FLOOR TILE 2: LARGE FORMAT PORCELAIN TILES 300x600 mm	PUBLIC AREAS - DESIGNATED WAITING AREAS (DWA)
F10	FLOOR TILE 3: TACTILE WARNING TILE FOR VISUALLY IMPAIRED	PUBLIC AREAS - HEADHOUSES / CONCOURSE
F11	FLOOR TILE 4: PLATFORM EDGE TILES	PUBLIC AREAS - PLATFORM
F12	FLOOR TILE 5: WAYFINDING TILE FOR VISUALLY IMPAIRED	PUBLIC AREAS - CONCOURSE / PLATFORM
F13	GRANITE	PUBLIC AREAS - STATION PLAZA
WALL		
W1	PAINT	ANCILLARY AND SERVICE ROOMS
W2	GLAZED AND PAINTED	ANCILLARY AND SERVICE ROOMS
W3	ELECTROLYTE RESISTANT PAINT	ANCILLARY AND SERVICE ROOMS
W4	GLAZED PORCELAIN TILES	ANCILLARY AND SERVICE ROOMS
W5	LARGE FORMAT PORCELAIN TILES 300x600 mm	PUBLIC AREAS - CONCOURSE / PLATFORM
W6	ARCHITECTURAL CONCRETE	PUBLIC AREAS - HEADHOUSES
W7	GLASS FIBER REINFORCED CONCRETE PANELS	PUBLIC AREAS - HEADHOUSES

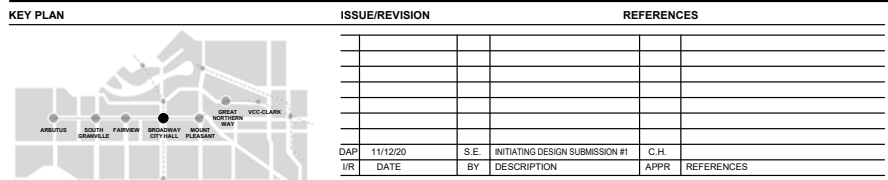
- CANADA LINE - BROADWAY - CITY HALL STATION - MODIFICATION
- NOTES
- EXISTING PLATFORM SHALL BE EXTENDED AND WILL FORM PART OF BCH-CL STATION AS PER SCHEDULE 4, PART 2, SECTION 10.18.3.7.
  - NEW OVER HEAD COILING GRILLS SHALL BE INSTALLED AT WALL OPENINGS TO THE NEW STAIRS, ESCALATORS AND ELEVATOR. WILL FORM PART OF BCH-CL STATION AS PER SCHEDULE 4, PART 2, SECTION 10.18.3.7.
  - NEW OVERHEAD GRILLES SHALL BE PROVIDED. ONE WILL SERVE BCH-CL STATION AND THE OTHER WILL SERVE BCH-ML STATION AS PER SCHEDULE 4, PART 2, SECTION 10.18.3.6.
  - NEW WALL OPENING AT EXISTING BCH-CL STATION BOX AS PER SCHEDULE 4, PART 2, SECTION 10.18.3.6. SEE DRAWING CB-ITGN-111 FROM "SCOPE OF WORK" DRAWINGS IN APPENDIX A.
  - NEW OVER HEAD GRILL AS PER SCHEDULE 4, PART 2, SECTION 10.18.3.4. (II). SEE DRAWING CB-ITGN-121 FROM "SCOPE OF WORK" DRAWINGS IN APPENDIX A.
  - REMOVE EXISTING KNOCK-OUT PANEL AND INSTALL NEW OVERHEAD GRILLE AS PER SCHEDULE 4, PART 2, SECTION 10.18.3.4. (II). SEE DRAWING CB-ITGN-121 FROM "SCOPE OF WORK" DRAWINGS IN APPENDIX A.
  - THE CURRENT STATION PLAZA BETWEEN BROADWAY ST. AND EXISTING STATION ENTRANCE PORTAL SHALL BE EXTENDED FOR MIN. 11M TO EAST ON THE NORTH SIDE OF NEW ELEVATOR LOBBY AS PER SCHEDULE 4, PART 2, SECTION 10.7.3.3. (A).
  - FENCED AND GATED STATION PLAZA ADDITION AROUND NEW ELEVATOR LOBBY. MIN. 3M WIDE ZONE FOR SKYTRAIN MAINTENANCE ACCESS AS PER SCHEDULE 4, PART 2, SECTION 10.7.3.3. (A).
  - REMOVABLE ROOF AREAS APPROXIMATELY 6MX15M AS PER SCHEDULE 4, PART 2, SECTION 10.17.3.(B).

CANADA LINE - BROADWAY - CITY HALL STATION - MODIFICATION

GENERAL NOTES:

- DIRECTIVE DRAWINGS DEFINE THE SCOPE OF WORK FOR PROJECT CO.
- THE SCOPE OF WORK SHOWN ON THE DRAWINGS SUPPLEMENT THE TECHNICAL REQUIREMENTS SET OUT IN SCHEDULE 4, PART 2 OF THE PROJECT AGREEMENT. THE EXTENT OF THE WORK TO BE DETERMINED DURING DETAIL DESIGN PHASE.
- AT MINIMUM, ANY MODIFICATION WILL REQUIRE EXISTING WALL, FLOOR AND CEILING FINISHES IF ANY HANDS AND/ OR THE NEW OPENINGS FOR THE CONNECTIONS TO THE MILLENNIUM LINE STATION AND TO THE FACE OF FLUSH MOUNTED TRACKS FOR OVERHEAD COILING GRILLE.

- SCOPE OF WORK (PRESCRIPTIVE)
- LOCALLY DEMOLISH FLOOR TILE AND FURRED WALL. REMOVE HANDRAIL, CHECK FOR WIRING AND OTHER SERVICES IN WALL CUT OPENING THROUGH CONCRETE WALL AND MODIFY TO MAINTAIN STRUCTURAL INTEGRITY. REPAIR WATERPROOFING AND DRAIN MAT TO RESTORE WATER TIGHTNESS WHERE NEW TUNNEL CONNECTS TO EXISTING STRUCTURE. REINSTATE FLOOR TILE. FURRED WALL AND HANDRAIL, EXTENDING INTO OPENING TO FACE OF OVERHEAD COILING GRILLE TRACK. FOR OVERHEAD COILING GRILLE (TPY) CONCEAL MOTOR/DRUM IN CEILING WHERE POSSIBLE. LOCATE MOTOR/CONTROLS ON SECURED SIDE. TERMINATE FLOORING WITH PRE-MANUFACTURED CONTROL JOINT. LOCATE FLUSH MOUNTED CONTROLS ON SECURE SIDE. CONCEAL ALL CONDUITS.
  - FOR BOTH PLATFORMS: REMOVE GIBS / STUD PARTITION, REMOVE PLATFORM END AREAS OF WORK AT THIS LEVEL, CUT OPENINGS IN WALLS AND MODIFY TO MAINTAIN STRUCTURAL INTEGRITY. REMOVE CONCRETE TOPPING AT GATE. LOCALLY DEMOLISH FLOOR AND WALL TILES. RELOCATE TAPERED PLATFORM EDGE TILES. INSTALL NEW FLOOR TILES ON THICKSET. INSTALL NEW WALL TILES ON FURRING (TIED INTO EXISTING). ADD NEW HANDRAIL / BRACKETS TO MATCH EXISTING (CONNECT TO EXISTING) OVER LENGTH OF EXTENDED PLATFORM. INSTALL NEW GATES TO EXISTING BLUE LIGHT STATION IN NEW LOCATION, ADD TILES / SUBSTRATE TO MATCH EXISTING ON END WALLS AND MINIMIZE WIRING. MODIFY SLAB PAST GATES TO SUIT. FOR WEST PLATFORM ONLY, RELOCATE EXISTING AREA OF REFUGE AS NOTED INCLUDING ASSOCIATED COMMUNICATION WIRING.
  - FOR BOTH PLATFORMS: LOCALLY REMOVE EXISTING FLOOR TILES AND REPLACE WITH BROADWAY SUBWAY PROJECT WAYFINDING TILE BETWEEN EXISTING DWA AND NEW OH GRILL. REPAIR EXISTING FLOOR TILES / SUBSTRATE WHERE DAMAGED BY WORK.
  - LOCALLY DEMOLISH EXISTING FURRED WALL AND FLOORING SIMILAR TO OTHER AREAS OF WORK AT THIS LEVEL, CUT OPENINGS IN WALLS AND MODIFY TO MAINTAIN STRUCTURAL INTEGRITY. REPAIR WATERPROOFING AND DRAIN MAT TO RESTORE WATER TIGHTNESS WHERE NEW TUNNEL CONNECTS TO EXISTING STRUCTURE. REINSTATE FLOOR TILE. FURRED WALL AND HANDRAIL, EXTENDING INTO OPENING TO FACE OF OVERHEAD COILING GRILLE TRACK. FOR OVERHEAD COILING GRILLE (TPY) CONCEAL MOTOR/DRUM IN CEILING WHERE POSSIBLE. LOCATE MOTOR/CONTROLS ON SECURED SIDE. TERMINATE FLOORING WITH PRE-MANUFACTURED CONTROL JOINT. LOCATE FLUSH MOUNTED CONTROLS ON SECURE SIDE. CONCEAL ALL CONDUITS.
  - LOCALLY REMOVE EXISTING WALL TILE, FURRING, FLOOR TILE AND HANDRAIL. CHECK FOR WIRING IN WALL, CUT OPENING IN CONCRETE AND MODIFY TO MAINTAIN STRUCTURAL INTEGRITY. INSTALL NEW OVERHEAD COILING GRILLE. EXTEND WALL AND FLOOR FINISHES AND HANDRAIL TO FACE OF OVERHEAD COILING GRILLE TRACK. LOCATE GRILLE SAME AS OPENING AT EXISTING KNOCK-OUT PANEL. RELOCATE EXISTING AFM (ETM) AND INFORMATION PANEL WITH PHONE. PROVIDE NEW CONCRETE PAD FOR ETM (AFM). MODIFY EXISTING IN-FLOOR CONDUIT / WIRING TO SUIT.
  - LOCALLY REMOVE EXISTING KIOSK AND TICKET DISPOSAL. LOCALLY REMOVE EXISTING WALL TILE, FURRING, FLOOR TILE AND HANDRAIL. CHECK FOR WIRING IN WALL, CUT OPENING IN CONCRETE AND MODIFY TO MAINTAIN STRUCTURAL INTEGRITY. INSTALL NEW GLAZING TO MATCH EXISTING, EXTEND FINISHES TO FACE OF GLAZING AND CONTINUE HANDRAIL ACROSS OPENING. MODIFY ROOF DRAINAGE ON OPPOSITE SIDE OF EXISTING CONCRETE WALL.
  - ADD NEW FIRE FIGHTER COMMAND POST (FCP), AND TRIM, OVER LOCATION OF EXISTING FCP.
  - NEW SPLIT OVERHEAD COILING GRILLES. CONCEAL MOTOR/DRUM IN CEILING WHERE POSSIBLE. LOCATE MOTOR/CONTROLS ON SECURED SIDE. REMOVE AND REINSTATE WALL, FLOOR, AND CEILING FINISHES.
  - ADD NEW FREESTANDING SIAMSE CONNECTIONS AND ASSOCIATED PIPES.
  - FOR BOTH PLATFORMS: ADD NEW SUPPORT FOR PLATFORM EDGEGLITZ AND SERVICE CHASEWAY (INCLUDES ANCHOR POINT, "VEE" BRACKET, BEAM, ADDITIONAL BRACKETS AS REQUIRED), ADD NEW EDGEGLITZ TO MATCH EXISTING, ADD NEW SERVICE CHASEWAY TO MATCH EXISTING, EDGEGLITZ AND CHASEWAY TO EXTEND TO NORTH EXTENT OF PLATFORM.
  - NEW ACOUSTIC METAL CEILING TO MATCH EXISTING.
  - MODIFY EXISTING FARE GATE ARRAY CONFIGURATION AND EXISTING BARRIER/ GATE ELEMENT TO INCLUDE ONE NEW ADDITIONAL STANDARD FARE GATE. REPAIR FLOOR AND ADD NEW TILES TO REPLACE EXISTING TILES/ SUBSTRATE WHERE REMOVED OR DAMAGED. RELOCATE RFID ANTENNA.
  - REMOVE AND REINSTATE EXISTING OVERHEAD GLAZING AND GLAZING SUPPORT BEAM WHERE AFFECTED BY DEMOLITION CONSTRUCTION.



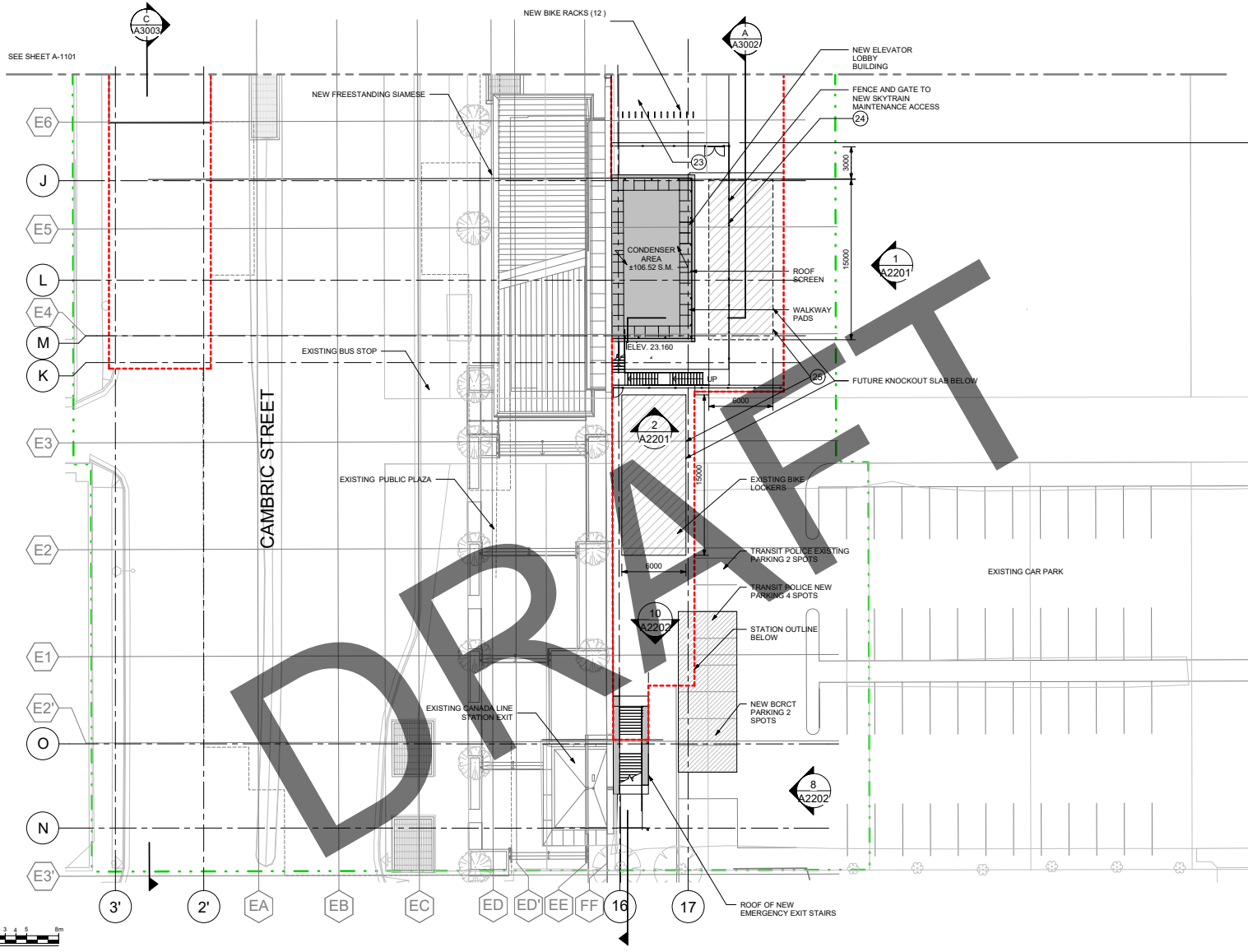
ISSUE/REVISION		REFERENCES		ENGINEERS SEAL	
DAP	11/12/20	S.E.	INITIATING DESIGN SUBMISSION #1	C.H.	
UR	DATE	BY	DESCRIPTION	APPR	REFERENCES

<p><b>KEY PLAN</b></p>	<p><b>ISSUE/REVISION</b></p> <p><b>REFERENCES</b></p> <p><b>ENGINEERS SEAL</b></p>	<p><b>CONSULTANT</b></p> <p><b>PROJECT</b></p> <p>TRANSILINK 400 - 287 Nelson's Court New Westminster, BC V6L 0E7 Canada Tel: 778.375.7500 Fax: 778.375.7510</p>	<p><b>DRAWING INFORMATION</b></p> <p>DRW BY: M.P. DES BY: M.P. CHK BY: S.E. APP BY: C.H.</p>	<p><b>CONTRACT NUMBER</b></p> <p>5508501</p> <p><b>PROJECT NUMBER</b></p> <p>BSP</p> <p><b>SHEET TITLE</b></p> <p>PRELIMINARY DESIGN DRAWINGS BROADWAY - CITY HALL STATION ARCHITECTURAL SCHEDULES</p> <p><b>DRAWING NUMBER</b></p> <p>BSP-70700-CHIG - 43DD-A0001</p>
------------------------	--	--	--	--





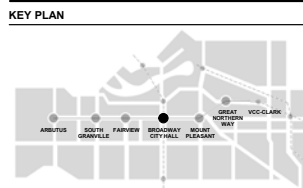
ANSI D 22x34 (595mm x 864mm)



**LEGEND:**

- PROPERTY BOUNDARY
- CENTERLINE OF UNDERGROUND TRACK
- OUTLINE OF UNDERGROUND STATION BOX
- PERMANENT LANDS LIMIT
- PROPOSED METAL GRATING
- EXISTING BUILDING BOUNDARY

1  
A1102 SITE PLAN - EXISTING PLAZA



ISSUE/REVISION		REFERENCES		ENGINEERS SEAL	
DAP	11/12/20	S.E.	INITIATING DESIGN SUBMISSION #1	C.H.	
UR	DATE	BY	DESCRIPTION	APPR	REFERENCES

**CONSULTANT**

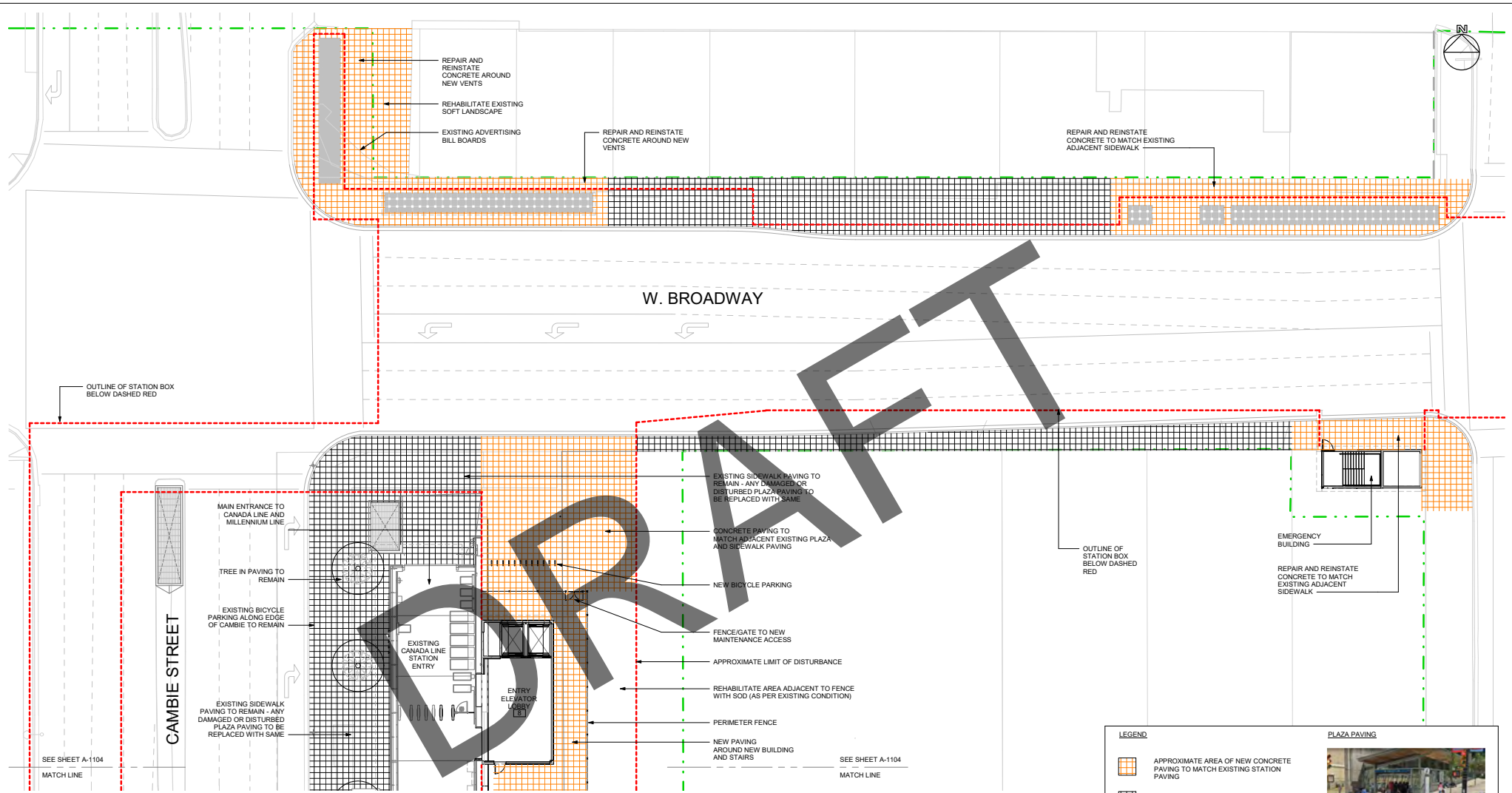
IBI GROUP  
55 St. Clair Avenue West,  
Toronto, ON M4V 2Y7, Canada  
Tel: 416.926.1900 Fax: 416.926.0544  
ibi@ibi.com

**PROJECT**

TRANS LINK  
400 - 287 Nelson's Court New  
Westminster, BC V3L 0E7 Canada  
Tel: 778.375.7500 Fax:  
778.375.7510

DRAWING INFORMATION		CONTRACT NUMBER
DRW BY	M.F.	5508501
DES BY	M.F.	<b>PROJECT NUMBER</b>
CHK BY	S.E.	BSP
APR BY	C.H.	<b>SHEET TITLE</b>
		PRELIMINARY DESIGN DRAWINGS BROADWAY - CITY HALL STATION ARCHITECTURAL SITE PLAN - EXISTING PLAZA
		<b>DRAWING NUMBER</b> BSP-70700-CHIG-43DD-A1102

ANSI D 22x34 (595mm x 864mm)

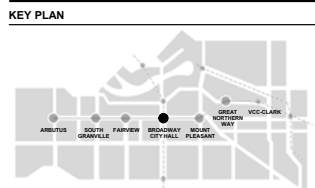


**LEGEND**

- APPROXIMATE AREA OF NEW CONCRETE PAVING TO MATCH EXISTING STATION PAVING
- EXISTING CITY SIDEWALK PAVING
- EXISTING PUBLIC STREET TREE (LOCATION TO BE SURVEYED AND CONFIRMED)

**PLAZA PAVING**

NEW CONCRETE TO MATCH AND TIE IN WITH ADJACENT SIDEWALKS AND CITY HALL STATION PAVING AND COLOUR



ISSUE/REVISION		REFERENCES		ENGINEERS SEAL
DAP	11/12/20	S.E.	INITIATING DESIGN SUBMISSION #1	C.H.
UR	DATE	BY	DESCRIPTION	APPR REFERENCES

**CONSULTANT**

**IBI**

IBI GROUP  
55 St. Clair Avenue West,  
Toronto, ON M4V 2Y7, Canada  
Tel: 416.996.1900 Fax: 416.996.0544  
ibi@group.com

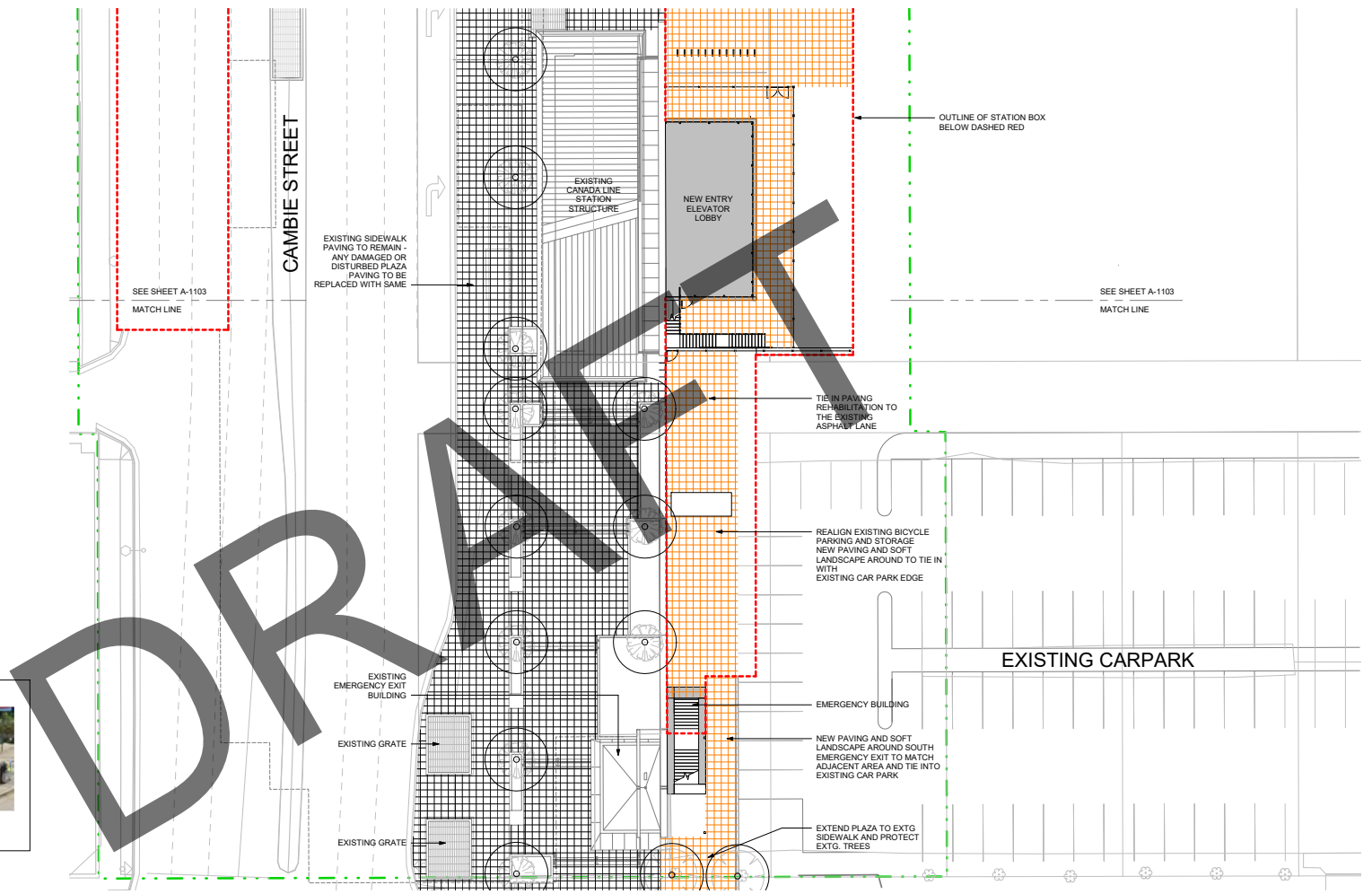
**BRITISH COLUMBIA**  
Ministry of  
Transportation  
and Infrastructure

**PROJECT**

**BROADWAY**  
Subway Project

TRANS LINK  
400 - 287 Nelson's Court New  
Westminster, BC V3L 0E7 Canada  
Tel: 778.375.7500 Fax:  
778.375.7510

DRAWING INFORMATION		CONTRACT NUMBER
DRW BY	M.F.	5508501
DES BY	M.F.	<b>PROJECT NUMBER</b>
CHK BY	S.E.	BSP
APR BY	C.H.	<b>SHEET TITLE</b>
		PRELIMINARY DESIGN DRAWINGS BROADWAY - CITY HALL STATION ARCHITECTURAL STATION PLAZA PLAN NORTH
		<b>DRAWING NUMBER</b> BSP-70700-CHIG-43DD-A1103



**LEGEND**

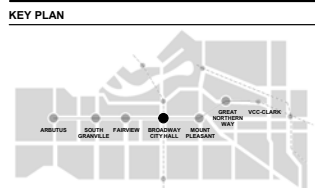
- APPROXIMATE AREA OF NEW CONCRETE PAVING TO MATCH EXISTING STATION PAVING
- EXISTING CITY SIDEWALK PAVING
- EXISTING PUBLIC STREET TREE (LOCATION TO BE SURVEYED AND CONFIRMED)

**PLAZA PAVING**

NEW CONCRETE TO MATCH AND TIE IN WITH ADJACENT SIDEWALKS AND CITY HALL STATION PAVING AND COLOUR

1  
A1104 / STATION PLAZA PLAN SOUTH

1:200



ISSUE/REVISION		REFERENCES		ENGINEERS SEAL	
DAP	11/12/20	S.E.	INITIATING DESIGN SUBMISSION #1	C.H.	
UR	DATE	BY	DESCRIPTION	APPR	REFERENCES

**CONSULTANT**

**IBI**

IBI GROUP  
55 St. Clair Avenue West,  
Toronto, ON M4V 2Y7, Canada  
tel: 416.995.1950 fax: 416.995.0544  
ibi@group.com

**BRITISH COLUMBIA**

Ministry of  
Transportation  
and Infrastructure

**PROJECT**

**BROADWAY**  
Subway Project

TRANSLINK  
400 - 287 Nelson's Court New  
Westminster, BC V3L 0E7 Canada  
Tel: 778.375.7500 Fax:  
778.375.7510

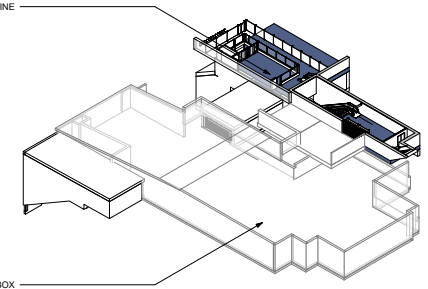
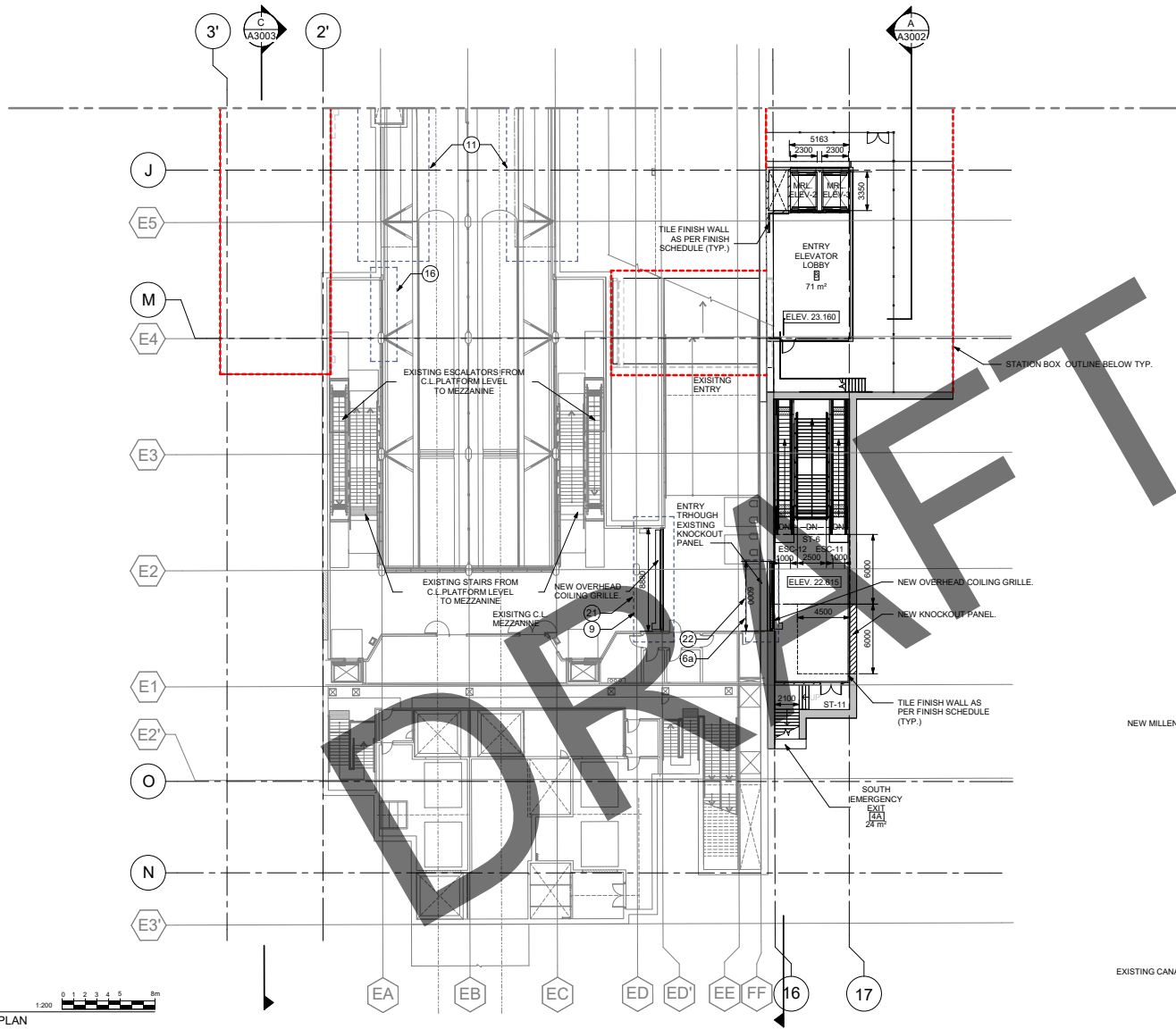
DRAWING INFORMATION		CONTRACT NUMBER
DRW BY	M.P.	5508501
DES BY	M.P.	<b>PROJECT NUMBER</b>
CHK BY	S.E.	BSP
APR BY	C.H.	<b>SHEET TITLE</b>
		PRELIMINARY DESIGN DRAWINGS BROADWAY - CITY HALL STATION ARCHITECTURAL STATION PLAZA PLAN SOUTH
		<b>DRAWING NUMBER</b> BSP-70700-CHIG-43DD-A1104



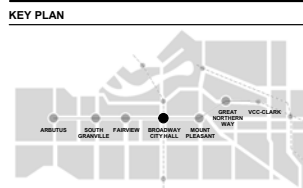




ANSI D 22x34 (59mm x 86mm)



1  
A1311 MEZZANINE LEVEL PLAN



ISSUE/REVISION		REFERENCES		ENGINEERS SEAL	
DAP	11/12/20	S.E.	INITIATING DESIGN SUBMISSION #1	C.H.	
UR	DATE	BY	DESCRIPTION	APPR	REFERENCES

**CONSULTANT**

IBI GROUP  
55 St. Clair Avenue West,  
Toronto, ON M4V 2Y7, Canada  
Tel: 416.999.1991 Fax: 416.999.9544  
ibi@group.com

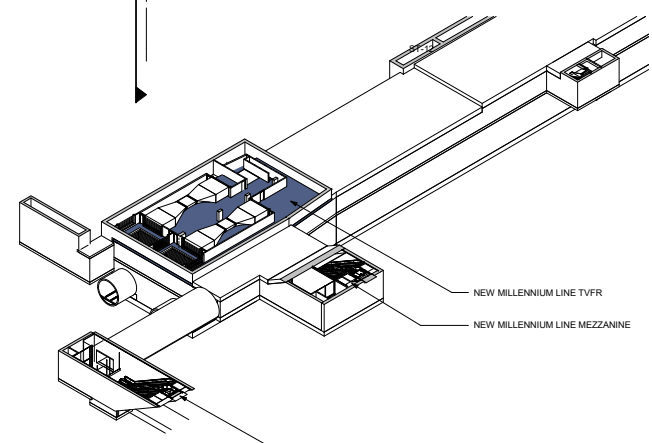
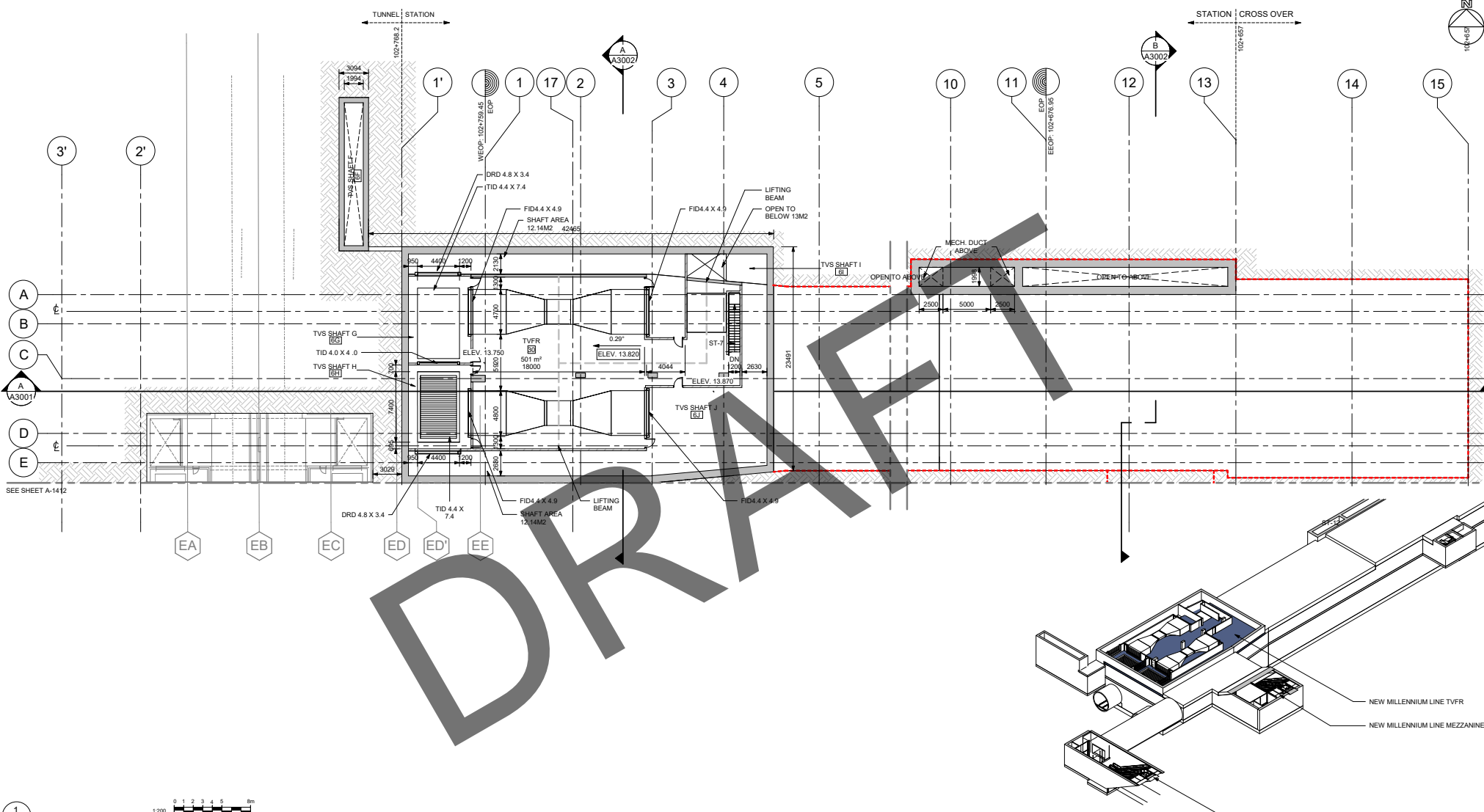
BRITISH COLUMBIA  
Ministry of  
Transportation  
and Infrastructure

**PROJECT**

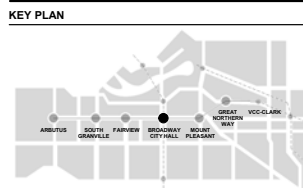
TRANS LINK  
400 - 287 Nelson's Court New  
Westminster, BC V3L 0E7 Canada  
Tel: 778.375.7500 Fax:  
778.375.7510

DRAWING INFORMATION		CONTRACT NUMBER	
DRW BY	M.F.	5508501	
DES BY	M.F.	<b>PROJECT NUMBER</b>	
CHK BY	S.E.	BSP	
APR BY	C.H.	<b>SHEET TITLE</b>	
		PRELIMINARY DESIGN DRAWINGS	
		BROADWAY - CITY HALL STATION	
		ARCHITECTURAL	
		MEZZANINE LEVEL PLAN	
		<b>DRAWING NUMBER</b>	
		BSP-70700-CHIG-43DD-A1311	

ANSI D 22x34 (59mm x 86mm)



1  
A1411  
EXISTING PLATFORM LEVEL PLAN - TVFR 2



ISSUE/REVISION		REFERENCES		ENGINEERS SEAL	
DAP	DATE	BY	DESCRIPTION	APPR	REFERENCES
11/12/20		S.E.	INITIATING DESIGN SUBMISSION #1	C.H.	

**CONSULTANT**

**IBI GROUP**  
55 St. Clair Avenue West,  
Toronto, ON M4V 2Y7, Canada  
Tel: 416.926.1500 Fax: 416.926.9544  
ibi@group.com

**BRITISH COLUMBIA**  
Ministry of  
Transportation  
and Infrastructure

**PROJECT**

**BROADWAY Subway Project**

TRANSLINK  
400 - 287 Nelson's Court New  
Westminster, BC V3L 0E7 Canada  
Tel: 778.375.7500 Fax:  
778.375.7510

**DRAWING INFORMATION**

DRW BY	M.F.
DES BY	M.F.
CHK BY	S.E.
APR BY	C.H.

**CONTRACT NUMBER**  
5508501

**PROJECT NUMBER**  
BSP

**SHEET TITLE**  
PRELIMINARY DESIGN DRAWINGS  
BROADWAY - CITY HALL STATION  
EXISTING PLATFORM LEVEL PLAN - TVFR 2

**DRAWING NUMBER**  
BSP-70700-CHIG-43DD-A1411





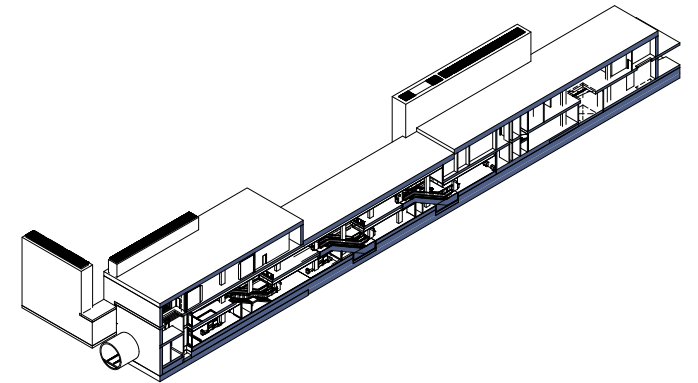
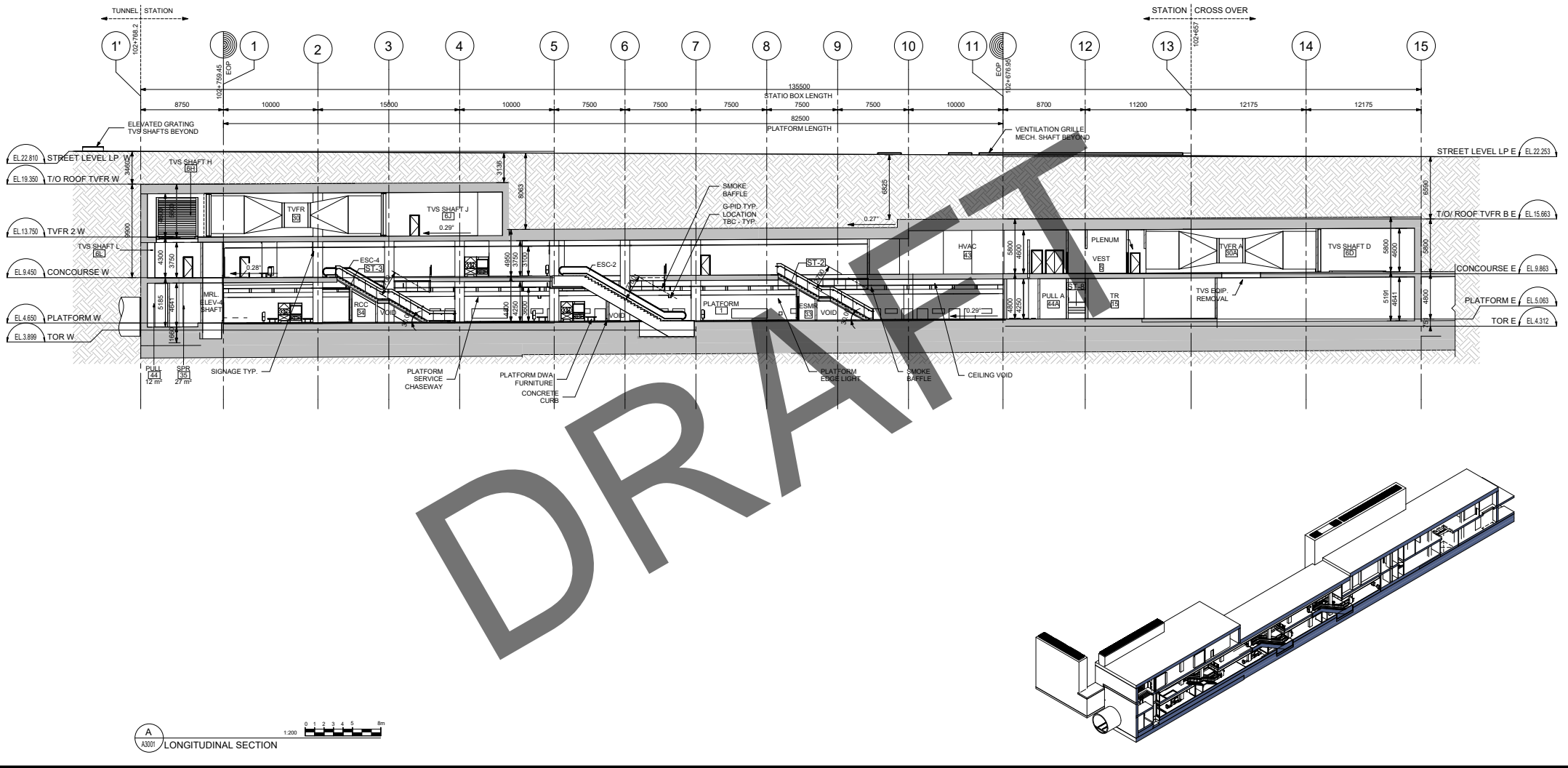




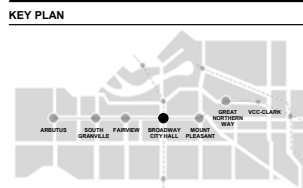




ANSI D 22x34 (59mm x 86mm)



A  
A3001 LONGITUDINAL SECTION  
1:200



ISSUE/REVISION		REFERENCES		ENGINEERS SEAL	
DAP	11/12/20	S.E.	INITIATING DESIGN SUBMISSION #1	C.H.	
UR	DATE	BY	DESCRIPTION	APPR	REFERENCES

**CONSULTANT**

**IBI**  
IBI GROUP  
 55 St. Clair Avenue West,  
 Toronto, ON M4V 2Y7, Canada  
 Tel: 416.926.1500 Fax: 416.926.9544  
 ibigroup.com

**BRITISH COLUMBIA**  
 Ministry of Transportation and Infrastructure

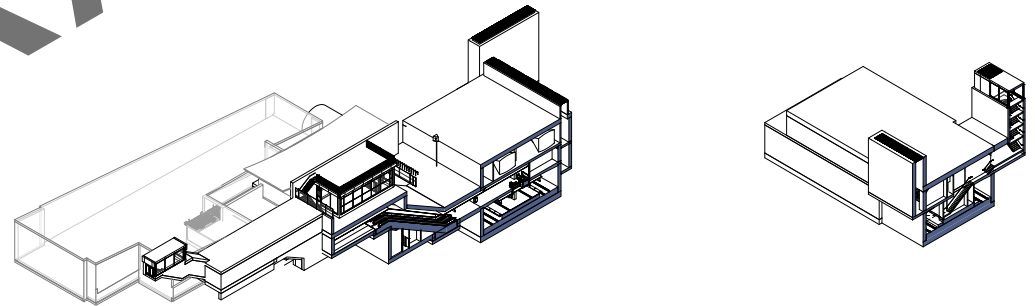
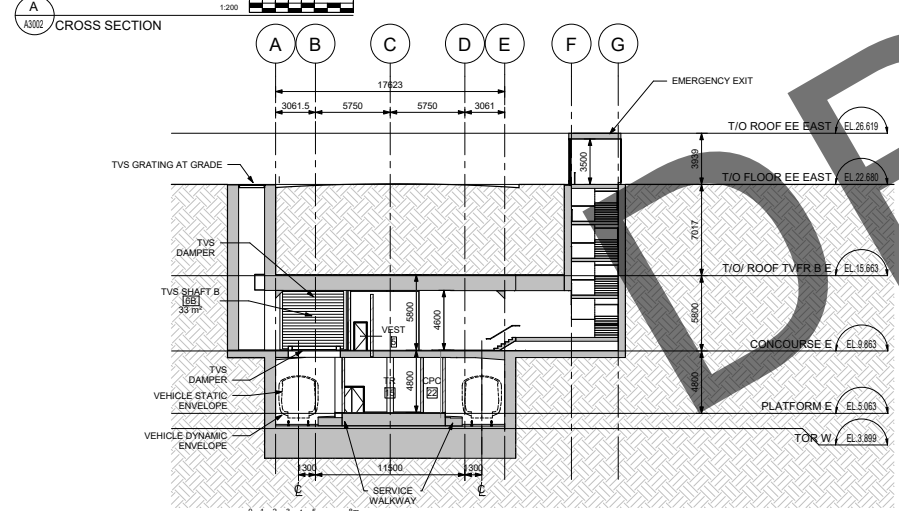
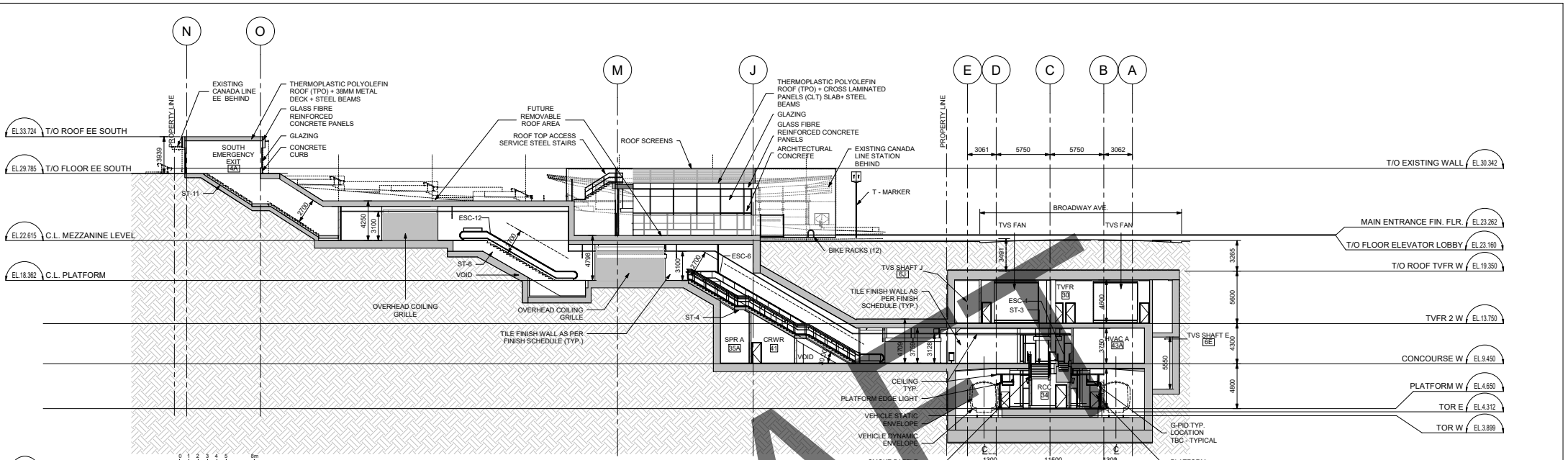
**PROJECT**

**BROADWAY Subway Project**

TRANSLINK  
 400 - 287 Nelson's Court New  
 Westminster, BC V3L 0E7 Canada  
 Tel: 778.375.7500 Fax:  
 778.375.7510

DRAWING INFORMATION		CONTRACT NUMBER	
DRW BY	M.P.	5508501	
DES BY	M.P.	<b>PROJECT NUMBER</b>	
CHK BY	S.E.	BSP	
APR BY	C.H.	<b>SHEET TITLE</b>	
		PRELIMINARY DESIGN DRAWINGS	
		BROADWAY - CITY HALL STATION	
		ARCHITECTURAL	
		LONGITUDINAL SECTION	
		<b>DRAWING NUMBER</b>	
		BSP-70700-CHIG-43DD-A3001	

ANSI D 22x34 (59mm x 86mm)



KEY PLAN	ISSUE/REVISION	REFERENCES	ENGINEERS SEAL			
	DAP	11/12/20	S.E. INITIATING DESIGN SUBMISSION #1	C.H.		
	UR	DATE	BY	DESCRIPTION	APPR	REFERENCES

 IBI GROUP 55 St. Clair Avenue West, Toronto, ON M4V 2V7, Canada Tel: 416.598.1900 Fax: 416.598.0544 ibigroup.com	 Ministry of Transportation and Infrastructure	<b>PROJECT</b>  <b>BROADWAY</b> Subway Project TRANSLINK 400 - 287 Nelson's Court New Westminster, BC V3L 0E7 Canada Tel: 778.375.7500 Fax: 778.375.7510	<b>DRAWING INFORMATION</b> DRW BY M.P. DES BY M.P. CHK BY S.E. APR BY C.H.	<b>CONTRACT NUMBER</b> 5508501 <b>PROJECT NUMBER</b> BSP <b>SHEET TITLE</b> PRELIMINARY DESIGN DRAWINGS BROADWAY - CITY HALL STATION ARCHITECTURAL CROSS SECTIONS <b>DRAWING NUMBER</b> BSP-70700-CHIG-43DD-A3002
--	---	--	--	---

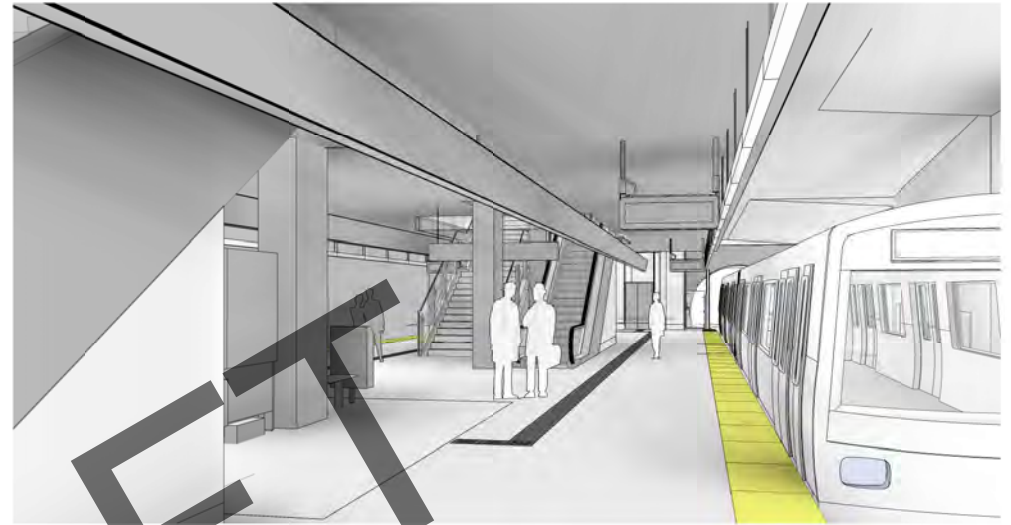






INTERIOR - CONCOURSE LEVEL

1  
A6202



INTERIOR - PLATFORM LEVEL

2  
A6202

DRAFT

KEY PLAN



ISSUE/REVISION

DATE	BY	DESCRIPTION	APPR	REFERENCES
11/12/20	S.E.	INITIATING DESIGN SUBMISSION #1	C.H.	

REFERENCES

ENGINEERS SEAL

CONSULTANT



PROJECT



TRANSLINK  
400 - 287 Nelson's Court New  
Westminster, BC V3L 0E7 Canada  
Tel: 778.375.7500 Fax:  
778.375.7510

DRAWING INFORMATION

DRW BY	M.P.
DES BY	M.P.
CHK BY	S.E.
APR BY	C.H.

CONTRACT NUMBER

5508501  
**PROJECT NUMBER**  
 BSP  
**SHEET TITLE**  
 PRELIMINARY DESIGN DRAWINGS  
 BROADWAY - CITY HALL STATION  
 ARCHITECTURAL  
 INTERIOR PERSPECTIVES  
**DRAWING NUMBER**  
 BSP-70700-CHIG-43DD-A6202

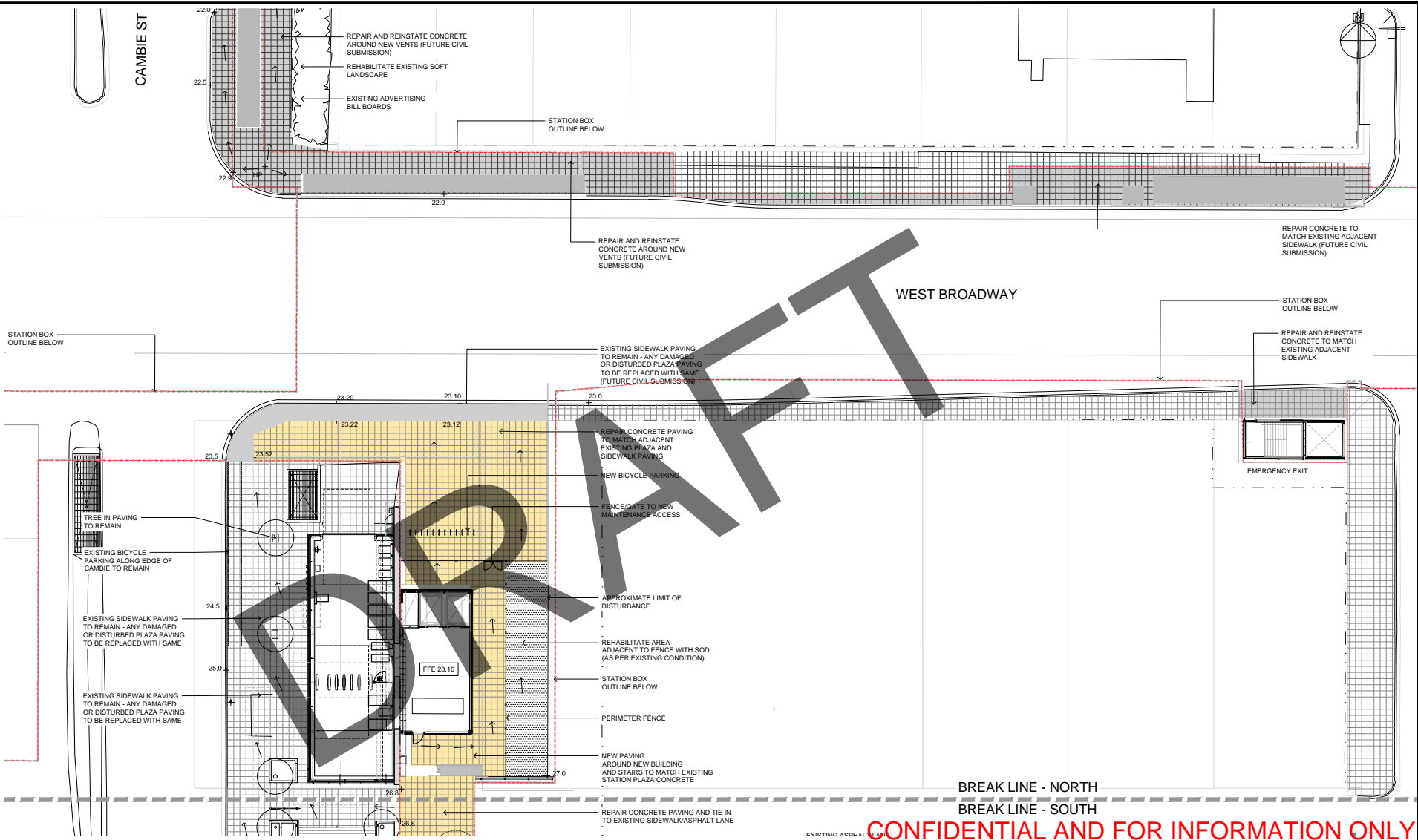


ANSI D 222 x 34" Last saved by: ERNIE WEBSTER(2020-12-17) Last Picked: 2020-12-17 File name: Y:\126436\_BSP\7.0\_Production\7.03\_Design\05\_Landscape\121758\_Landscape Plan\_BCH.dwg

**PLAZA PAVING**



NEW CONCRETE TO MATCH AND TIE IN WITH ADJACENT SIDEWALKS AND CITY HALL STATION PAVING PATTERN AND COLOUR.



**LEGEND**

- APPROXIMATE AREA OF NEW CONCRETE PAVING TO MATCH EXISTING SIDEWALK AND STATION (OUTSIDE PL - FUTURE CIVIL SUBMISSION)
- APPROXIMATE AREA OF NEW CONCRETE PAVING TO MATCH EXISTING SIDEWALK AND STATION (INSIDE PL)
- EXISTING CITY SIDEWALK PAVING
- EXISTING PUBLIC TREE (LOCATION TO BE SURVEYED AND CONFIRMED)
- +39.0 PRELIMINARY SPOT GRADE
- DRAINAGE DIRECTION

CONFIDENTIAL AND FOR INFORMATION ONLY

KEY PLAN	ISSUE/REVISION	REFERENCES	ENGINEER'S SEAL	PROJECT	DB CONTRACTOR	DRAWING INFORMATION	CONTRACT NUMBER
							5508501
							PROJECT NUMBER
							BSP - 126436
							SHEET TITLE
							DESIGN DRAWINGS
							BROADWAY CITY HALL STATION
							LANDSCAPE
							GROUND LEVEL PLAN (NORTH)
							DRAWING NUMBER
							BSP - 70700 - CHIG - 4LDD - 1001