



CITY OF VANCOUVER

FILM KIOSK SPECS

10/17/2024



1-888-632-6477
sales@validmfg.com
validmfg.com

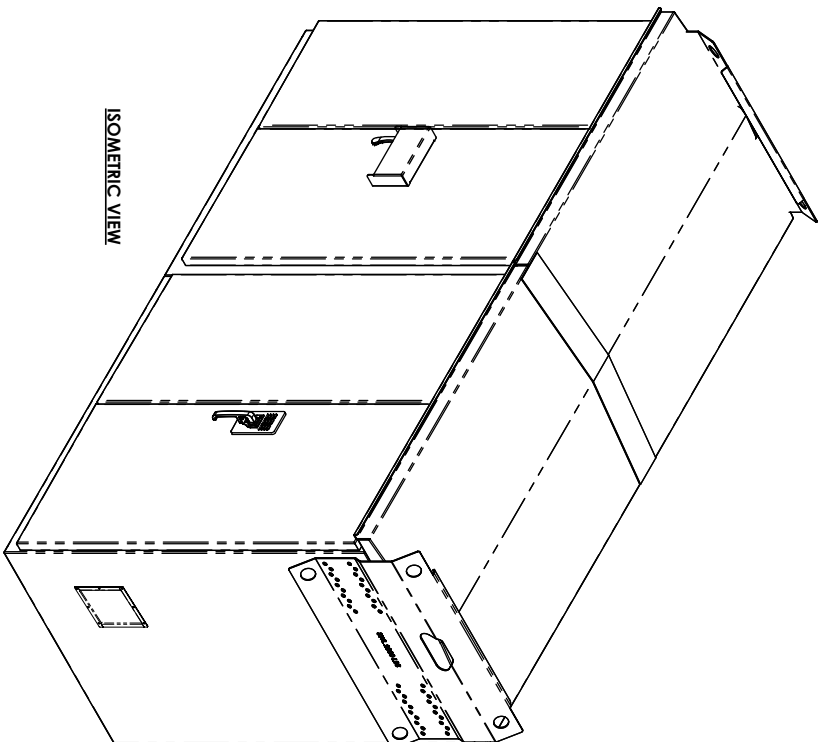
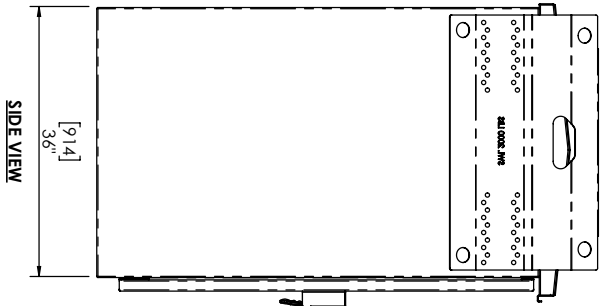
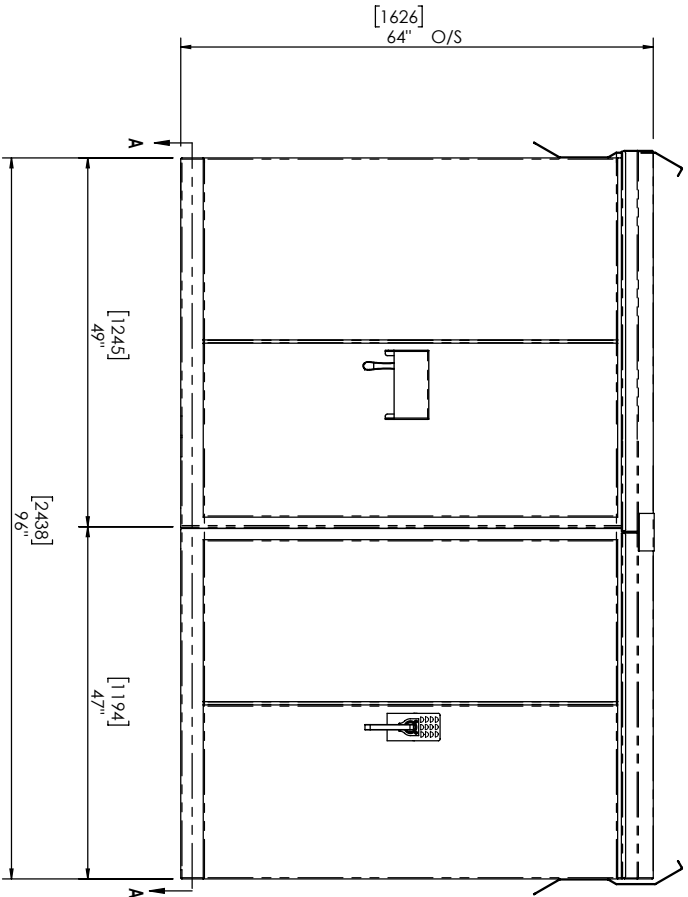
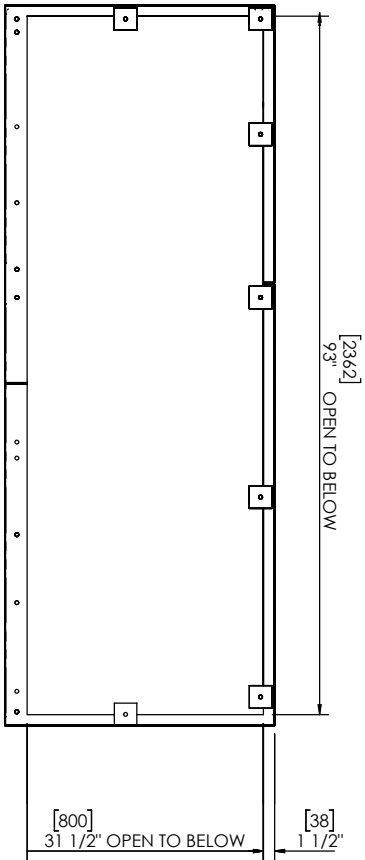


FILM KIOSK SPECS

10/17/2024

Part Number: KXXA649636-XXXX

**1-888-632-6477
sales@validmfg.com
validmfg.com**




FOR RECORD

NOTES:

UNLESS OTHERWISE SPECIFIED:

- CSA TYPE 3R RATED
- MADE OF 12ga (.104") 2B STAINLESS STEEL
- POWDER COATED PC162 JET BLACK (RAL 9005)
- ALL INTERIOR BACK PANELS ARE 14 GA GALVANIZED STEEL (UNFINISHED)
- ALL DOORS INCLUDE GAS SHOCK STAYS
- ALL DOORS WITH HANDLES HAVE THREE POINT LATCHING SYSTEM
- ALL DOOR HANDLES ARE STAINLESS STEEL AND PADLOCK-ABLE
- RECEPTACLE SECTION DOOR HANDLE HAS KEYLESS ENTRY
- CORD ACCESS DOOR ON RECEPTACLE SIDE OF KIOSK
- REMOVABLE LIFTING LUGS AND SPREADER BAR ARE INCLUDED
- DIMENSIONS ARE: INCHES [MILLIMETERS]

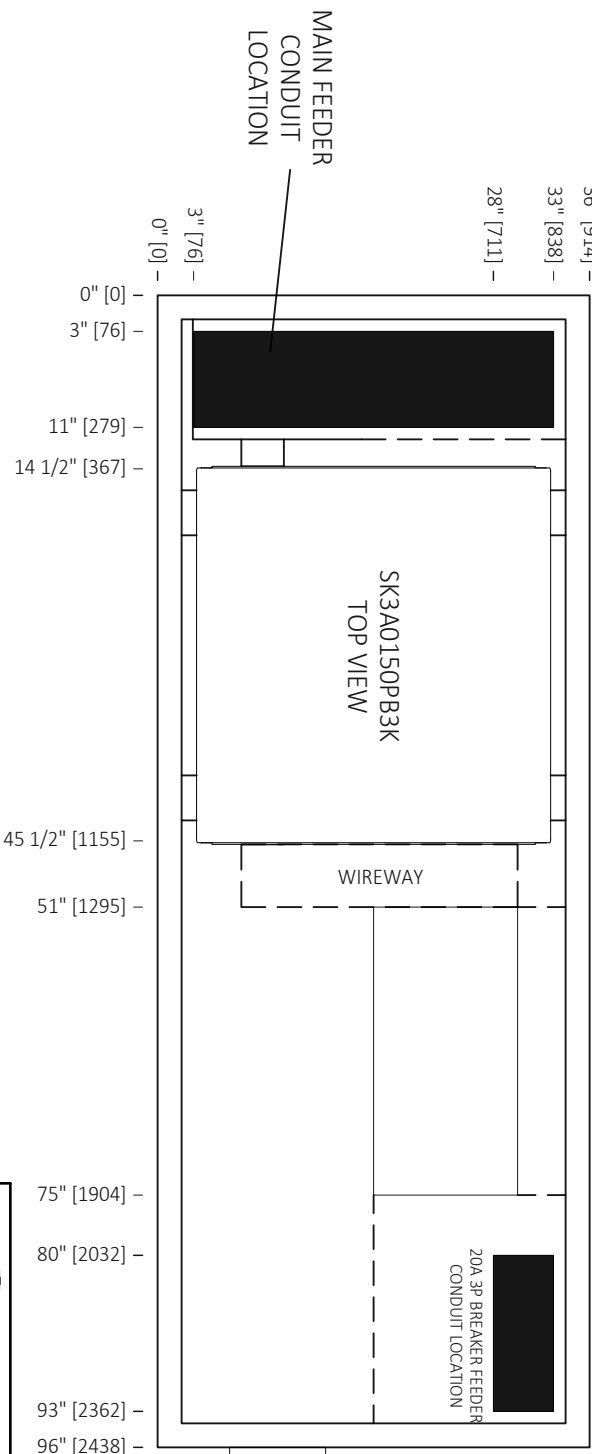
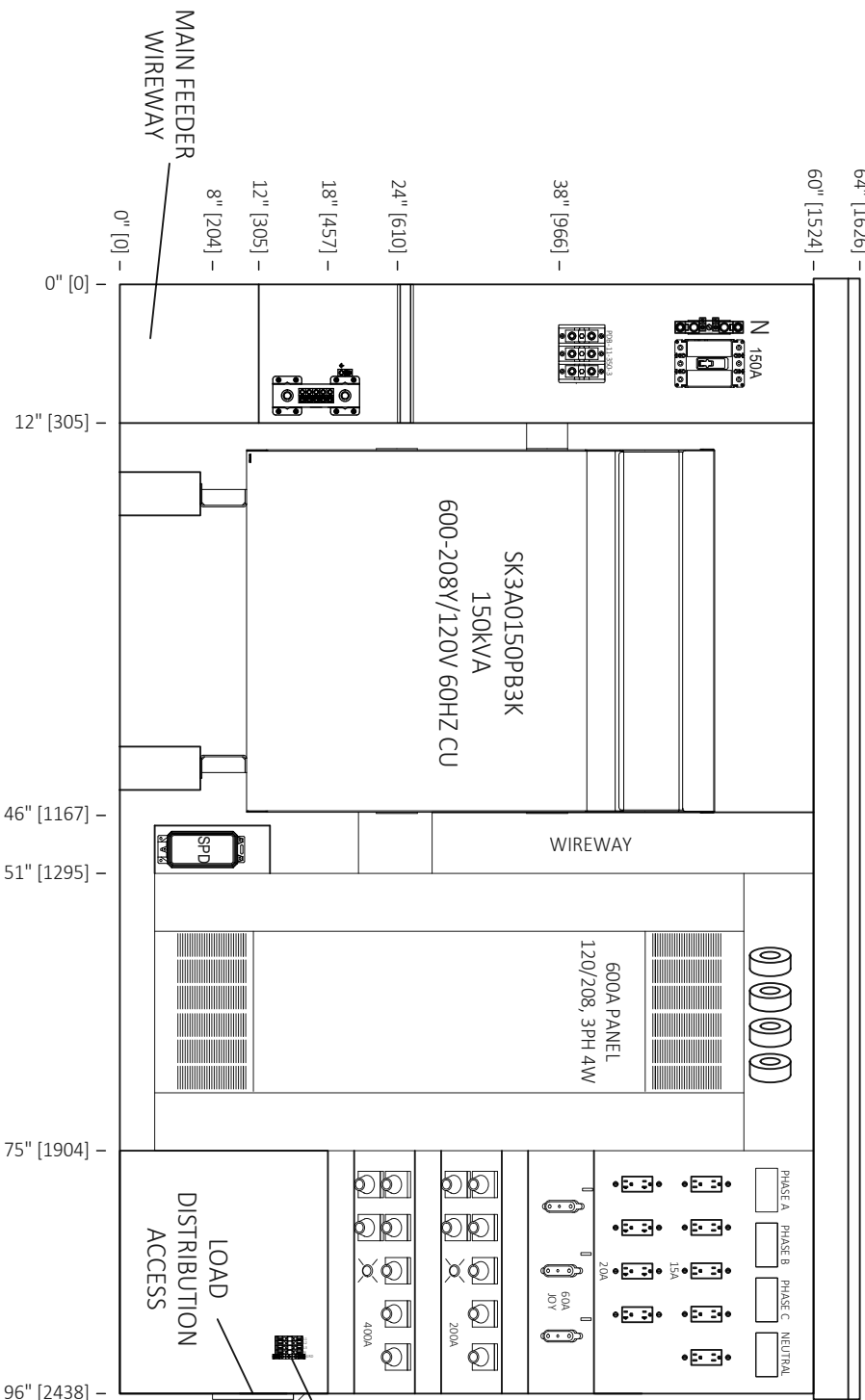
		VALID MANUFACTURING LTD.		5320-B 48th Ave SE Salmon Arm, BC, V1E 1X2 PH (250) 832-6477		<i>Advanced technologies Simple solutions.</i> THE INFORMATION CONTAINED IN THIS DRAWING IS THE SOLE PROPERTY OF VALID MANUFACTURING LTD. ANY REPRODUCTION IN PART OR WHOLE WITHOUT WRITTEN PERMISSION IS PROHIBITED	
REV		BY		DATE		COMMENTS	
0		KH		21JUL23		INITIAL RELEASE	
1		KH		06SEP23		FOR RECORD	
PROJECT		DESCRIPTION:		PROJECT		DESCRIPTION:	
DRAWN BY:		DATE:		PROJECT		DESCRIPTION:	
DMG. #:		DATE:		PROJECT		DESCRIPTION:	
KXXS649636		KXXS649636		KXXS64-96-36-01		PACIFIC AND CARALL FILM KIOSK	
THIRD ANGLE PROJECTION		THIRD ANGLE PROJECTION		THIRD ANGLE PROJECTION		THIRD ANGLE PROJECTION	
SHEET# 1 OF 4		SHEET# 1 OF 4		SHEET# 1 OF 4		SHEET# 1 OF 4	

CONTENTS:


- ILSCO PDB-11-350-3 - POWER DISTRIBUTION BLOCK, 3 POLE 350-6
- SO-D CH200SN - NEUTRAL BLOCK, 200A
- EATON PDG23F0150TFFJ - BREAKER, 150A 3P, 600V, 14KAIC
- HAMMOND SK3A0150PB3K - TRANSFORMER, 150KVA-K13, 600:208Y/120V, CU
- CUTLER HAMMER P4L4C6-28 - PANEL BOARD, 600A, 120/208V, CU BUS
- (1) EATON BAB3020H - BREAKER, 20A 3P, BOLT-ON, 10KAIC
- (8) EATON BAB1015 - BREAKERS, 15A 1P, BOLT-ON, 10KAIC
- (4) EATON BAB1020 - BREAKERS, 20A 1P, BOLT-ON, 10KAIC
- (3) EATON BAB1060 - BREAKERS, 60A 1P, BOLT-ON, 10KAIC
- (1) EATON EHD3020 - BREAKER, 20A 3P, BOLT-ON, 10KAIC
- (1) EATON ED3200 - BREAKER, 200A 3P, 208V, BOLT-ON, 10KAIC
- (1) EATON CKD3400 - BREAKER, 400A 3P, 600V, 10KAIC @ 208V, 100% RATED
- MERSEN STXP208Y10 - SURGE PROTECTOR, 120/208V 3PH 4W, 100KA SURGE CAPACITY, 200KA SCCR
- (4) FERRAZ SHAWMUT USM1 - FUSE HOLDERS, TYPE M, 600V, 1P DIN RAIL MOUNT
- (4) BUSSMANN MDL-1 - GLASS FUSES, 1A, SLOW BLOW
- (4) ENTES EPM-4C-48 - DIGITAL PANEL AMMETERS, 0-600 AC AMPERAGE
- GE/ITI IKU8SC - SHORTING BLOCK, 8 POLE, W/ COVER
- (4) SQ-D 7RL-601 - CURRENT TRANSFORMERS, 600:5
- (5) LEVITON GFNT1-W - RECEPTACLES, GFI, 15A, 5-15R, WHITE
- (4) LEVITON GFNT2-W - RECEPTACLES, GFI, 20A, 5-20R, WHITE
- (3) SMS 569372-88DGN - RECEPTACLES, 3-PIN, FEMALE PANEL MNT, DRILLED GROUND AND NEUTRAL, ORANGE
- (10) LEVITON 16R24-X - RECEPTACLES, CAM-LOCK, FEMALE 400A, 1/2 IN STUD-(RED, BLACK, BLUE, WHITE, GREEN)
- (4) LEVITON 16R23-X - RECEPTACLES, CAM-LOCK, MALE 400A, 1/2 IN STUD-(WHITE, GREEN)
- (2) SQ-D XB4BVG3 - PILOT LIGHTS, 120V, 22mm, GREEN
- TRILOGY PDL8200 - KEYLESS ENTRY LOCK
- (4) WEIDMULLER 1020200000 - TERMINAL, #8-26AWG, FEED-THRU
- (1) WEIDMULLER 1010200000 - TERMINAL, #8-22AWG, 2 POSITION GROUND

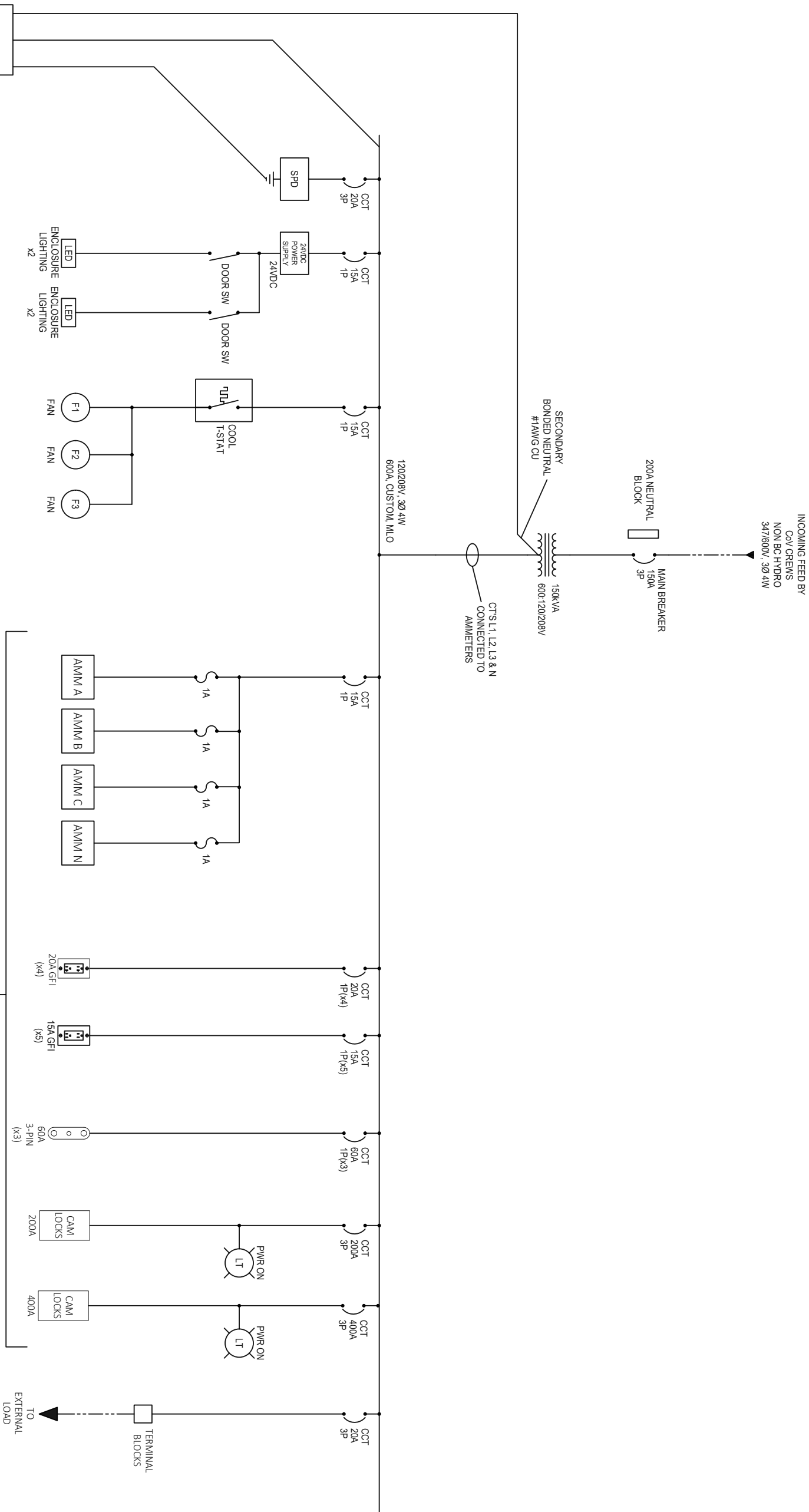
NOTES:

ENCLOSURE CERTIFIED TYPE 3R, 600V 150A SUPPLY, 10KA
KIOSK MADE OF 12GA (.104") 2B STAINLESS STEEL
KIOSK POWDER COATED PC162 JET BLACK (RAL 9005)
INTERIOR PANELS, WIREWAYS, AND COVERS ARE 14GA GALVANIZED STEEL (UNFINISHED)
RECEPTACLE WIREWAY/COVERS POWDER COATED PC107 WHITE
WIREWAYS WITH DEADFRONT COVERS
MAIN GROUND BUS (MGB) MADE FROM 1/4" X 2" TINNED COPPER, WITH FIVE 2/0-#6AWG ALCU LUGS
MAIN BREAKER INCLUDES PADLOCK ATTACHMENT
WIRED FROM MAIN BREAKER TO TRANSFORMER PRIMARY WITH 1/0AWG COPPER
WIRED FROM TRANSFORMER SECONDARY TO PANEL WITH DUAL 4/0AWG COPPER
LED LIGHTING AND COOLING FANS WITH SNAP SWITCH THERMOSTAT LOCATED IN CEILING PANEL
HINGED DOOR FOR CABLE ACCESS, LOCKABLE FROM INSIDE OF KIOSK
BACK PANEL LAYOUT MAY BE REVISED DURING ASSEMBLY TO ALLOW BETTER FIT OF COMPONENTS
WIREWAY FOOTPRINT WILL BE MAINTAINED



FOR RECORD

				VALID MANUFACTURING LTD.			
5320-B 48th Ave SE Salmon Arm, BC, V1E 1X2 PH (250) 832-6477							
<i>Advanced technologies Simple solutions.</i> THE INFORMATION CONTAINED IN THIS DRAWING IS THE SOLE PROPERTY OF VALID MANUFACTURING LTD. ANY REPRODUCTION IN PART OR WHOLE WITHOUT WRITTEN PERMISSION IS PROHIBITED							
REV	BY	DATE	COMMENTS	QUOTE #/ CUSTOMER			
0	KH	24JUL23	INITIAL RELEASE	REF PART #:	KXXS64-96-36-01		
1	KH	06SEP23	FOR RECORD	PROJECT NAME:	PACIFIC AND CARALL FILM KIOSK		
				PROJECT DESCRIPTION:	KIOSK, S. SIDED Q. DOOR, 64 x 96 x 36in,		
				SO:			PKG REV.
				DWG. #:	KXXS649636		1



FOR RECORD

<div>VALID MANUFACTURING LTD.</div> <div>5320-B 48th Ave SE Salmon Arm, BC, V1E 1X2 PH (250) 832-6477</div> <div><i>Advanced technologies Simple solutions.</i> THE INFORMATION CONTAINED IN THIS DRAWING IS THE SOLE PROPERTY OF VALID MANUFACTURING LTD. ANY REPRODUCTION IN PART OR WHOLE WITHOUT WRITTEN PERMISSION IS PROHIBITED</div>												REF PART #:		KXXS64-96-36-01	
REV	BY	DATE	COMMENTS	PROJECT NAME:	PACIFIC AND CARALL FILM KIOSK										
0	KH	24JUL23	INITIAL RELEASE												
1	KH	06SEP23	FOR RECORD	PROJECT DESCRIPTION:	KIOSK, S. SIDED Q. DOOR, 64 x 96 x 36in, TYPE 3R										
				SO:											
				DWG. #:	KXXS649636										
					SHEET # 3 OF 4										
					PKG REV 1										

----- INDICATES FIELD WIRING (BY OTHERS)

ERRORS OR OMISSIONS ON THIS DRAWING DO NOT RELIEVE THE
INSTALLATION CONTRACTOR OF RESPONSIBILITY TO ADHERE TO CEC
SAFETY STANDARDS

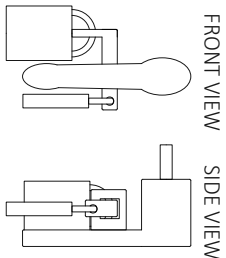
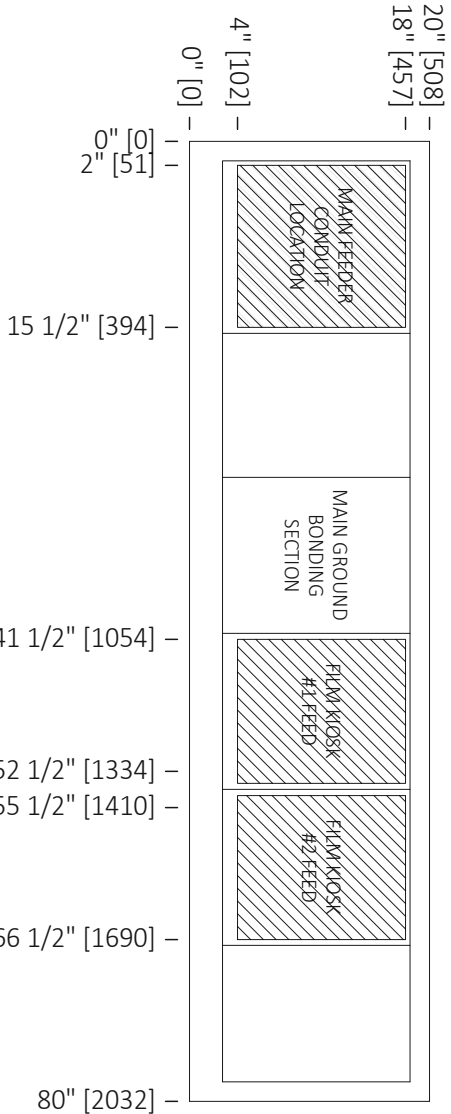
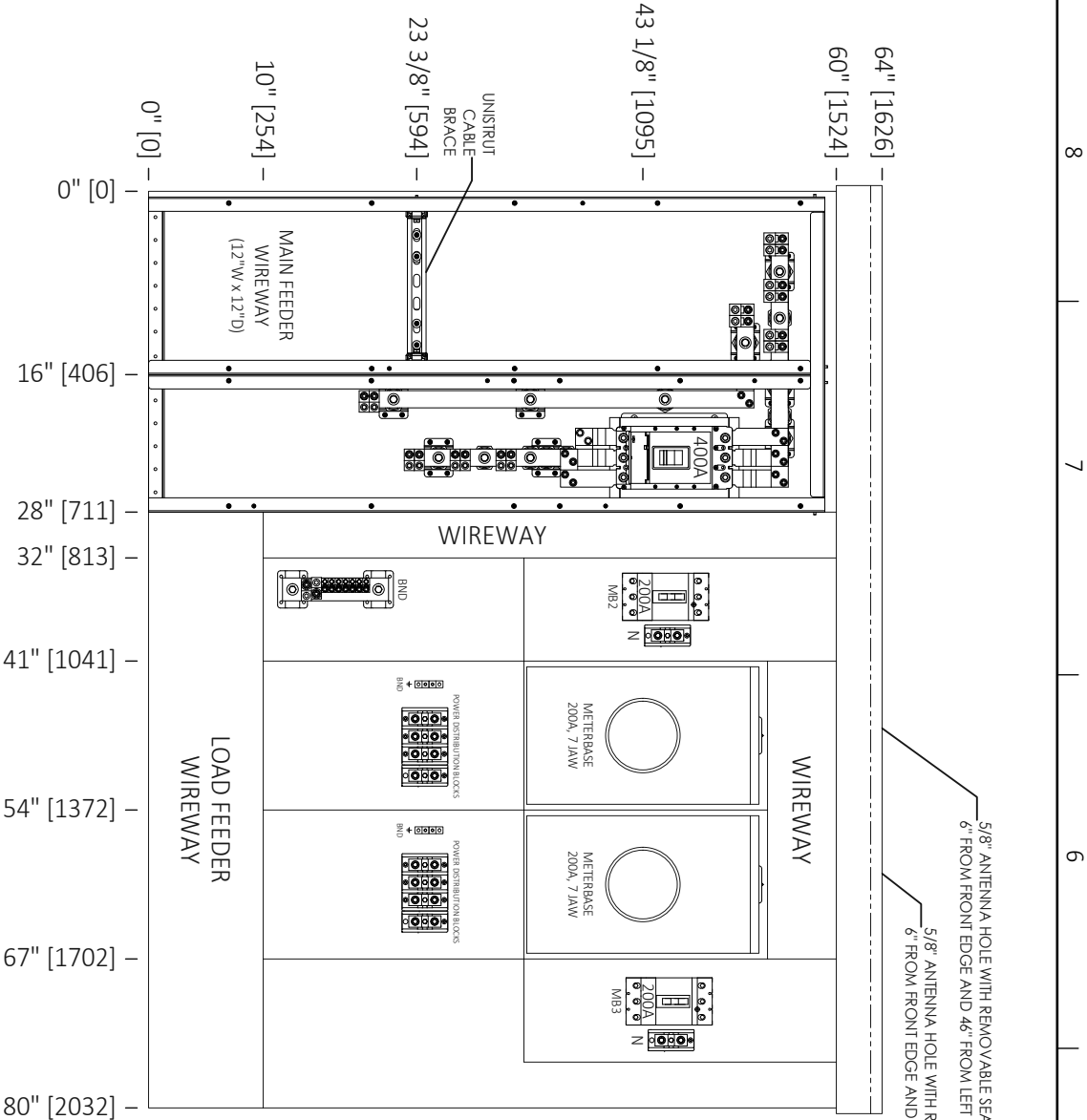


SERVICE KIOSK SPECS

10/17/2024

Part Number: KDDS648020-XXXX

1-888-632-6477
sales@validmfg.com
validmfg.com



CONTENTS:

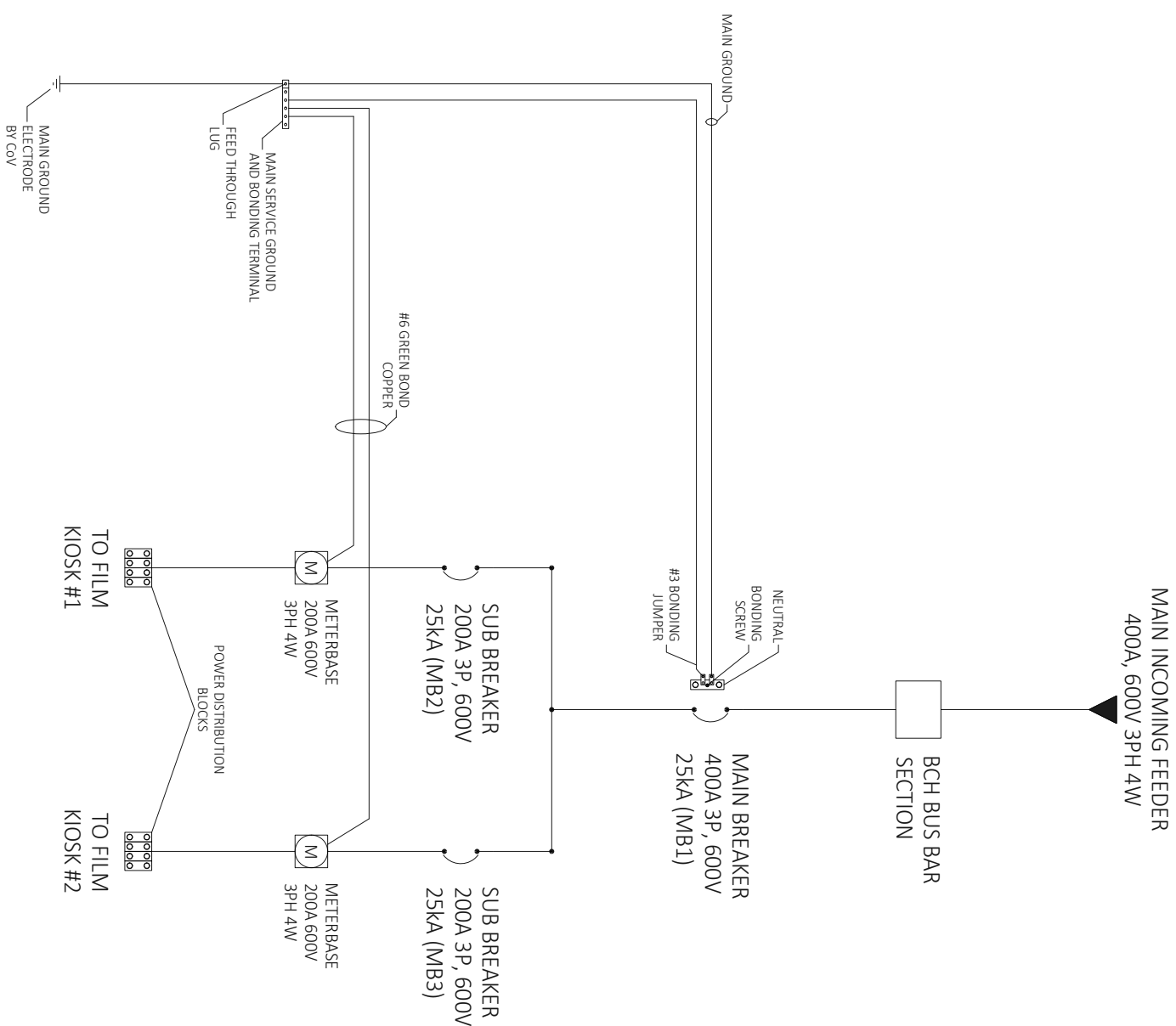
- (8) ILSCO VSL-350 - LUGS, MECHANICAL, 350MCM - #6AWG AL/CU
- EATON PDG33K0400TFAI - BREAKER, 400A 3P, 600V, 25KAIC (MB1)
- (8) ILSCO VSL-250 - LUGS, MECHANICAL, 250MCM - #6AWG AL/CU
- (2) EATON PDG23F0200TFEI - BREAKERS, 200A 3P, 600V, 25KAIC (MB2 & MB3)
- (2) MICROELECTRIC PL27-INTCV - METER BASES, 200A 7 JAW, POLYPHASE, W/ ISOLATED NEUTRAL BLOCK
- (2) ILSCO PDB-11-350-3 - POWER DISTRIBUTION BLOCKS, 3P, 350MCM - #6AWG AL/CU
- (4) ILSCO PDB-11-350-1 - POWER DISTRIBUTION BLOCKS, 1P, 250MCM - #6AWG AL/CU

NOTES:


- ENCLOSURE CERTIFIED TYPE 3R, 600V 400A SUPPLY, 10kA
- KIOSK SHELL TO BE MADE OF 12GA STAINLESS STEEL
- KIOSK SHELL POWDER COATED PC162 JET BLACK (RAL 9005)
- INTERIOR PANELS, WIREWAYS, AND COVERS ARE 14GA GALVANIZED STEEL (UNFINISHED)
- WIREWAYS WITH DEADFRONT COVERS, SEALING SCREWS PROVIDED AS REQUIRED
- HINGED DOORS WITH POUR IN PLACE GASKETS AND GAS SHOCK STAYS
- DOOR HANDLE IS STAINLESS STEEL, PADLOCK-ABLE, WITH THREE POINT LATCHING SYSTEM
- MAIN BREAKERS (MB1, 2, 3) INCLUDES PADLOCK ATTACHMENTS
- LINE AND LOAD BUS BARS CONSTRUCTED FROM 1/4" X 1.5" TINNED COPPER, MOUNTED ON INSULATED STANDOFFS
- LINE SIDE (SUPPLY) LUGS ACCEPT 350MCM-#6AWG AL/CU, TWO LUGS PER PHASE AND NEUTRAL
- MAIN BOND BUS (MGB) CONSTRUCTED FROM 1/4" X 2" TINNED COPPER, WITH 2x 250MCM - #6AWG AND 7x 2/0-#6AWG ALCU LUGS
- WIRED FROM LOAD SIDE BUS BARS THROUGH SUB-BREAKERS AND METER BASES TO POWER DISTRIBUTION BLOCKS WITH #3/0AWG COPPER
- FILTERED CONVECTION VENTILATION SYSTEM
- ELECTRICAL PANELS WILL BE LAMACOID LABELLED AND HAVE PRINTED DIRECTORIES INSIDE EACH PANEL DOOR
- MAIN BREAKER SHALL NOT BE REVERSE FED
- ARC FLASH LABELS ON DEAD FRONT COVERS
- LAMINATED SID AFFIXED TO CABINET DOOR INTERIOR ALONG WITH O&M MANUAL
- DOORS ARE BONDED WITH BARE RIBBON TYPE CONDUCTOR
- INCLUDES DOUBLE PADLOCK ATTACHMENT FOR KIOSK DOOR HANDLE
- METER WINDOW MADE OF 1/4" (6mm) CLEAR POLYCARBONATE (LEXAN)
- THE DISTANCE FROM THE METER SOCKET COVER TO THE INSIDE OF THE CLOSED ENCLOSURE DOOR IS BETWEEN 10 AND 12 INCHES
- SYSTEM DESIGNED FOR COLD-METERED APPLICATIONS
- WRITTEN APPROVAL REQUIRED FROM BC HYDRO FOR METER SOCKETS INSTALLED WITHIN AN ENCLOSURE
- DESIGNED TO BC HYDRO STANDARD ESS4 S2-01 REV 8

FOR RECORD

	VALID MANUFACTURING LTD.			5320-B 48th Ave SE Salmon Arm, BC, V1E 1X2 PH (250) 832-6477
	REV	BY	DATE	COMMENTS
	0	KH	24JUL23	INITIAL RELEASE
	1	KH	15SEP23	FOR RECORD
PROJECT NAME:				
PROJECT DESCRIPTION:				
SO:				
DWG. #:				
KDDSG4-80-20-XX				REF PART #:
PACIFIC AND CARALL FILM KIOSK				PROJECT NAME:
KIOSK, S. SIDED D. DOOR, 64 X 80 X 20IN, TYPE 3R, W/ METER WINDOWS				PROJECT DESCRIPTION:
KDDSG480				DWG. #:
SHEET # 1 OF 2				PKG REV. 1



FOR RECORD

<div><div><div><div>VALID MANUFACTURING LTD.</div><div>5320-B 48th Ave SE Salmon Arm, BC, V1E 1X2 PH (250) 832-6477</div></div></div><div><div><div>Advanced technologies Simple solutions.</div><div>THE INFORMATION CONTAINED IN THIS DRAWING IS THE SOLE PROPERTY OF VALID MANUFACTURING LTD. ANY REPRODUCTION IN PART OR WHOLE WITHOUT WRITTEN PERMISSION IS PROHIBITED</div></div></div></div>				QUOTE# / CUSTOMER		
REV	BY	DATE	COMMENTS	REF PART#:	KDD564-80-20-XX	
0	KH	21JUL23	INITIAL RELEASE	PROJECT NAME:	PACIFIC AND CARALL FILM KIOSK	
1	KH	15SEP23	FOR RECORD	PROJECT DESCRIPTION:	KIOSK, S. SIDED D. DOOR, 64 X 80 X 20IN, TYPE 3R, W/ METER WINDOWS	
				SO:		
				DWG. #:	KDD5648020	
					PAGE REV 1	
				SHEET # 2 OF 2		

----- INDICATES FIELD WIRING (BY OTHERS)
 ERRORS OR OMISSIONS ON THIS DRAWING DO NOT RELIEVE
 THE INSTALLATION CONTRACTOR OF RESPONSIBILITY TO
 ADHERE TO CEC SAFETY STANDARDS