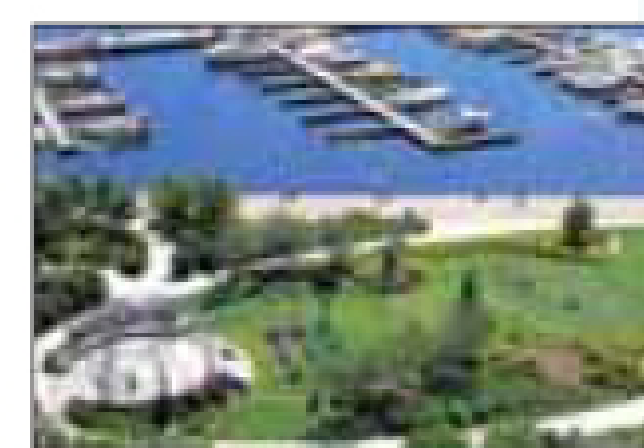
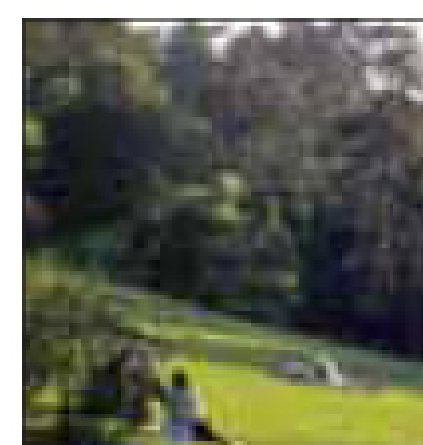


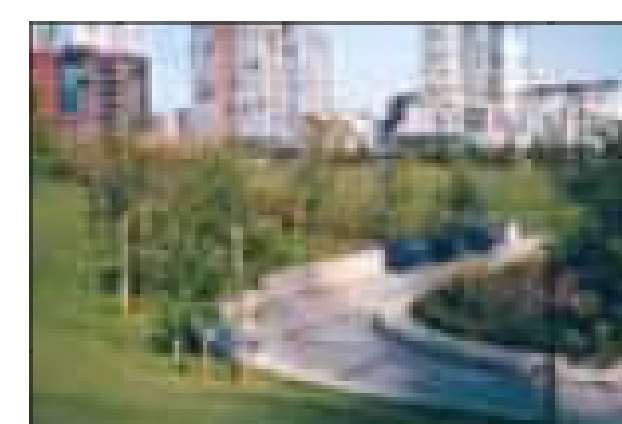
Seawall



Park Near the Shoreline



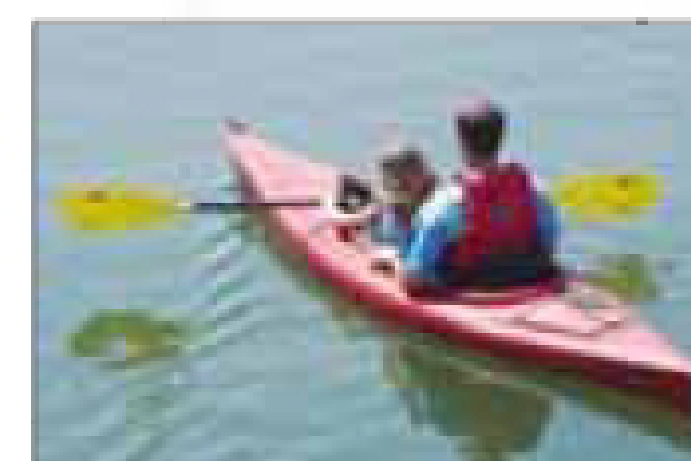
Grass Slopes and Forest



Seawall for Bicycles and Rollerblades

Legend

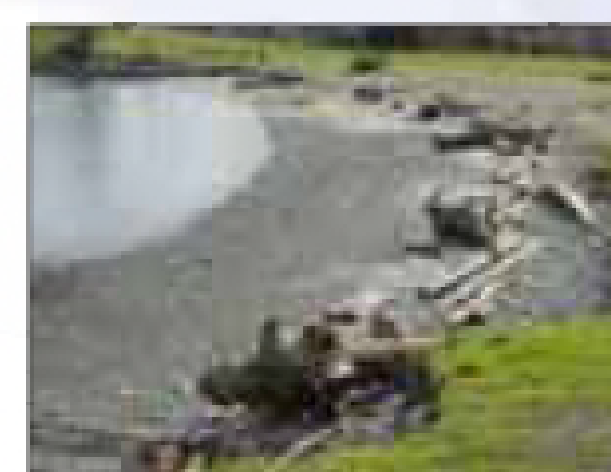
- 1 Future Carrall Street Greenway
- 2 Plaza with Waterplay and Garden Rooms
- 3 Covered Viewpoint and Venue for Civic Ceremonies
- 4 Secondary Dock for Small Boats
- 5 Park Board Maintenance and Storage Building
- 6 Beach
- 7 Barrier Wall (below grade)
- 8 Terrace and Amphitheatre
- 9 Forested Areas
- 10 Tennis, Basketball and BMX Area - Viaduct Play Park
- 11 Cafe
- 12 Viewpoint with terrace seating
- 13 Tidal Walkway
- 14 Public Washrooms
- 15 Storage for Boating Equipment
- 16 Waterplay
- 17 Gateway
- 18 Playground
- 19 Neighbourhood Park with Picnic Area
- 20 Non-Motorized Boat Dock
- 21 Dragon Boat Dock
- 22 Disabled Access Elevator
- 23 Boat Storage
- 24 Additional Parking



Kayaking



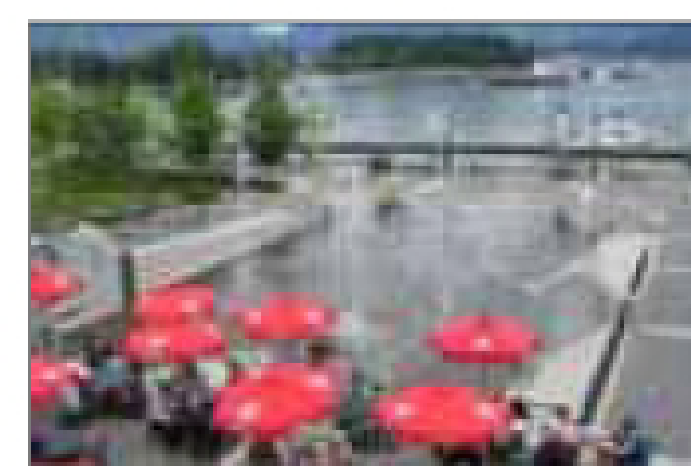
Covered Viewpoint



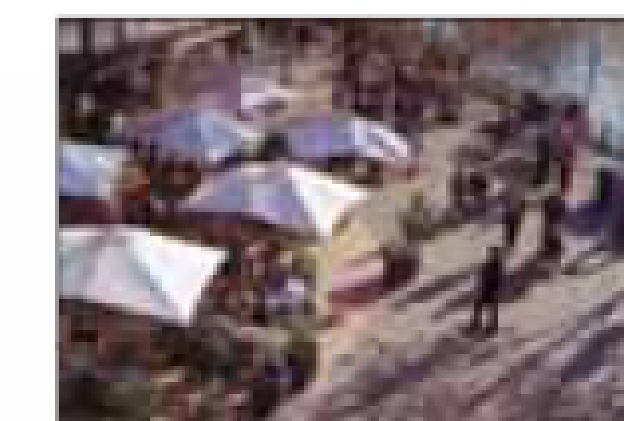
Beach



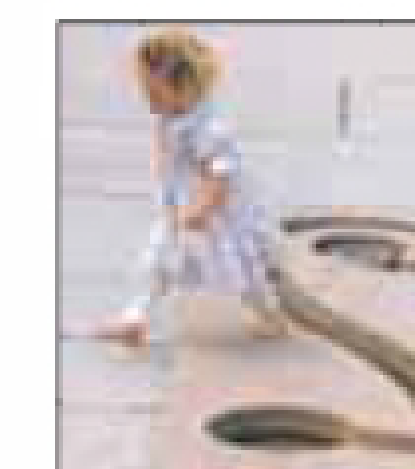
Tidal Walkway Waterfall



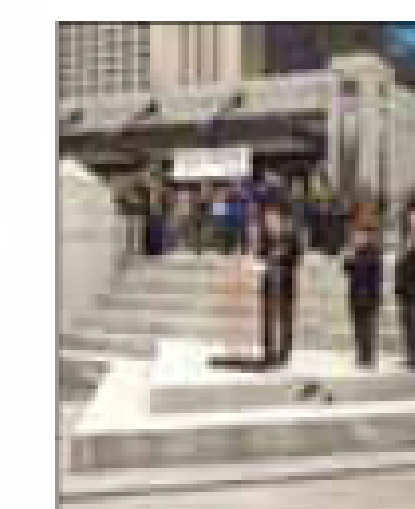
Cafe



Cafe near the Shoreline



Waterplay



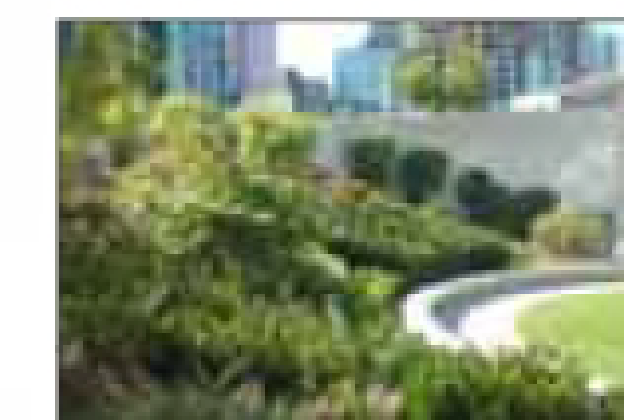
Venue for Civic Ceremonies



Playground



Neighbourhood Park



Neighbourhood Park

