

3.1 DOWNTOWN BIKE NETWORK EXPANSION

Nelson Street: Richards St to Beatty St

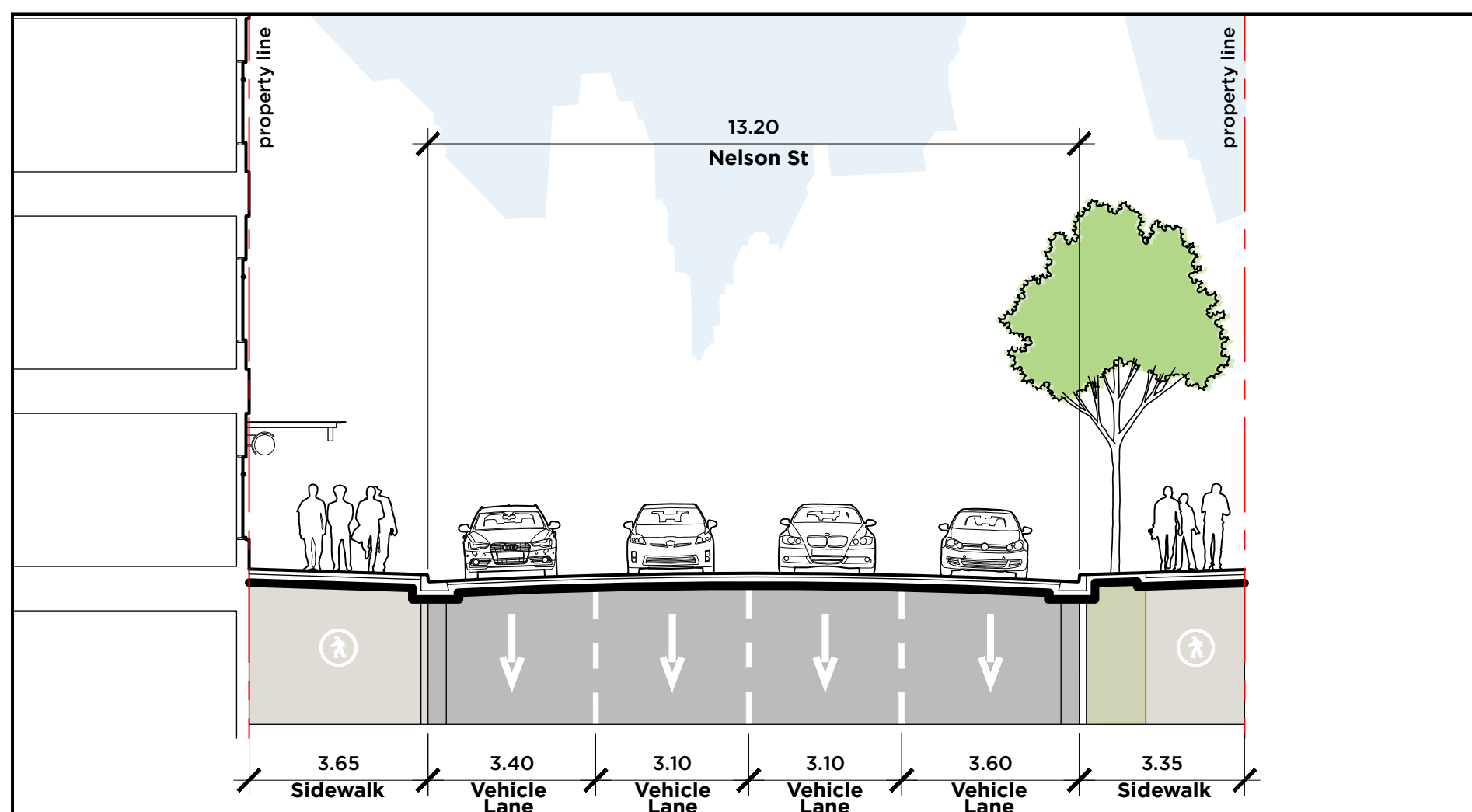
Project Description

A new bike lane couplet on Nelson Street (eastbound) and Smithe Street (westbound) is planned to fill an eight block gap in the downtown network between Dunsmuir Street and Pacific Street.

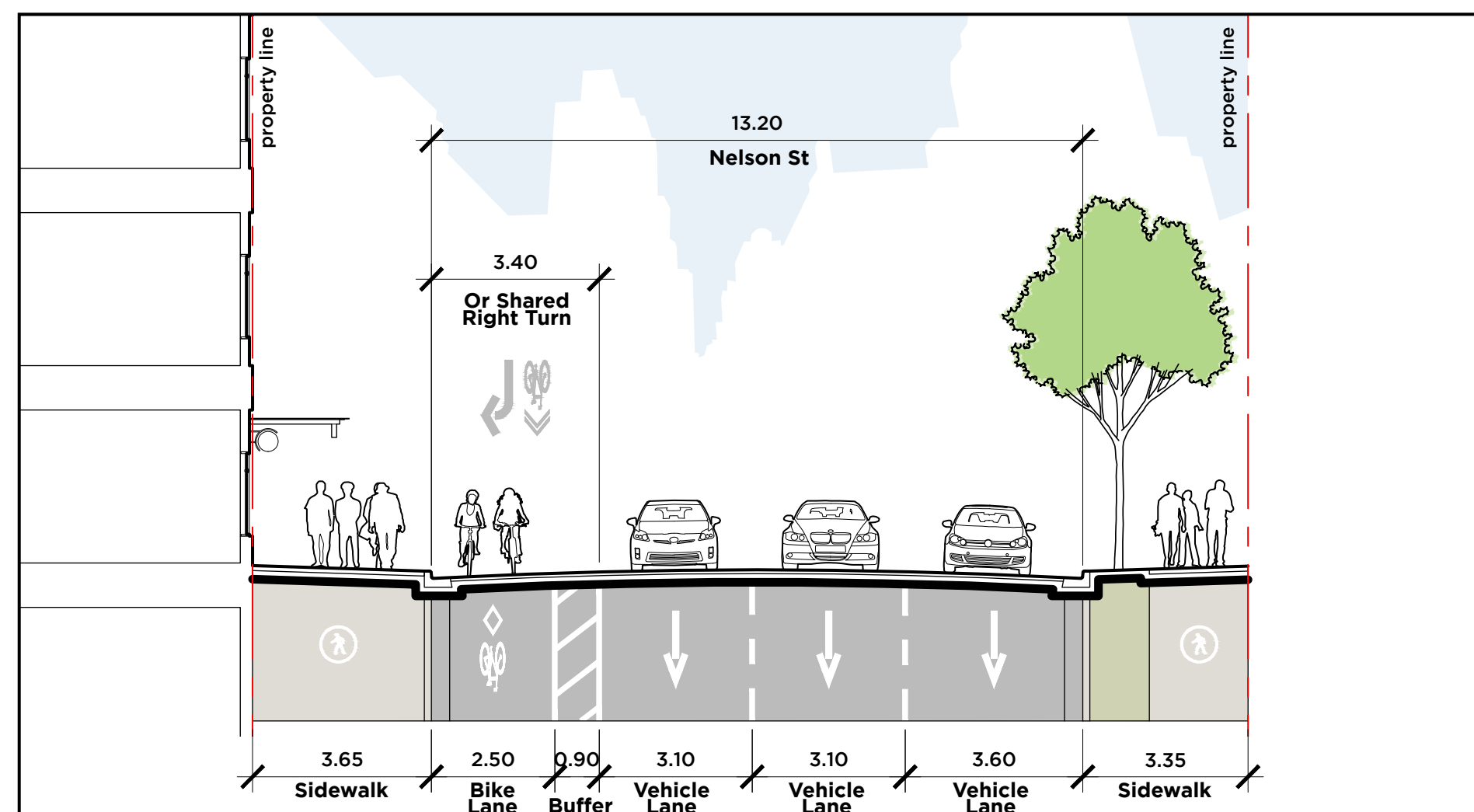
Beginning at Richards Street, this initial segment connects to Beatty Street, and onward to the Cambie Bridge and Seawall via Smithe Street. This section is a combination of protected bike lanes and shared right turn/bike lanes at intersections. Future extensions from Hornby Street and the West End are under consideration, as is an improved cycling facility on the Cambie Street Bridge.

Stopping prohibitions along the right-hand curb will be extended from Homer to Richards Street.

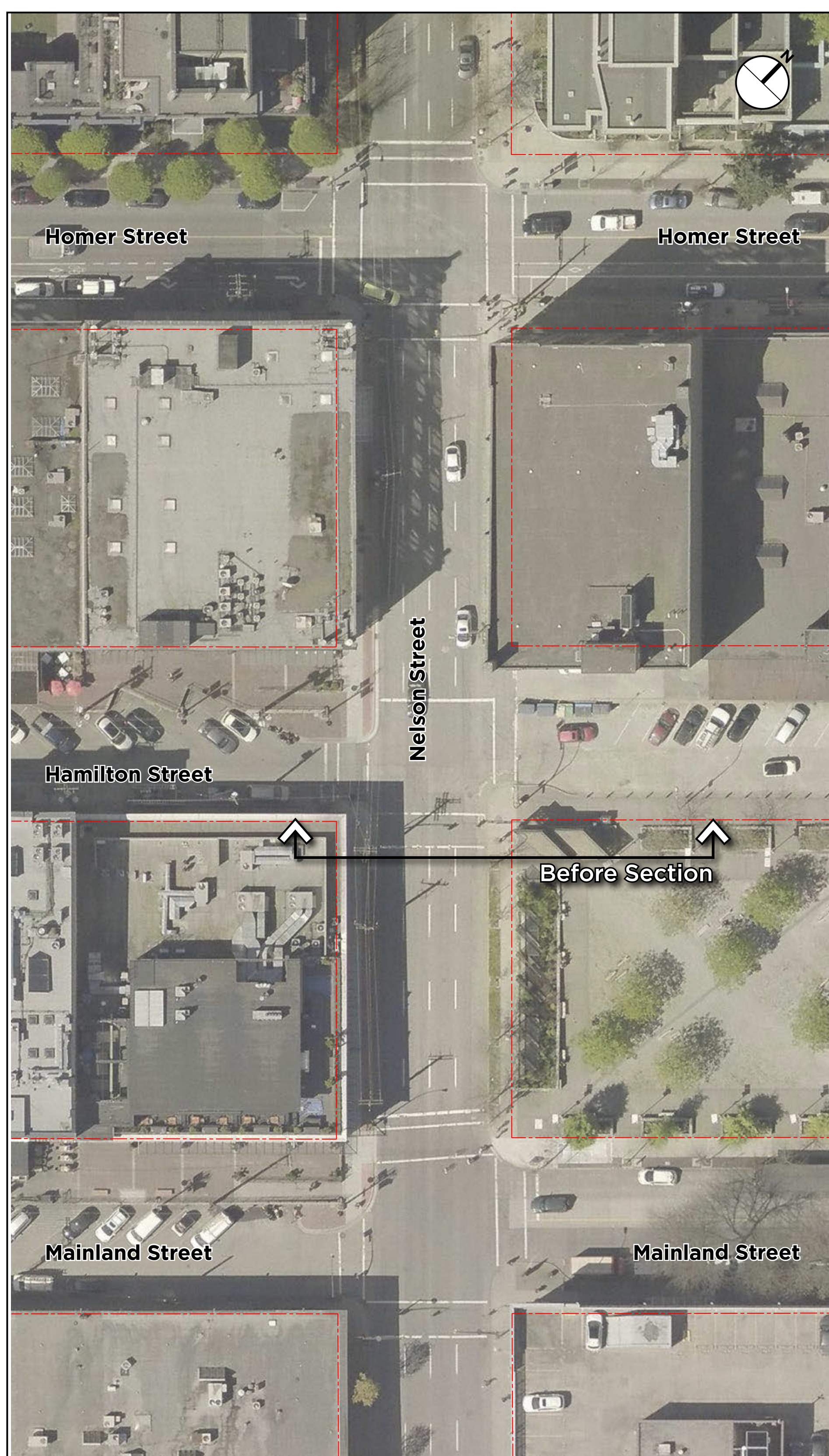
Cross Section: Before



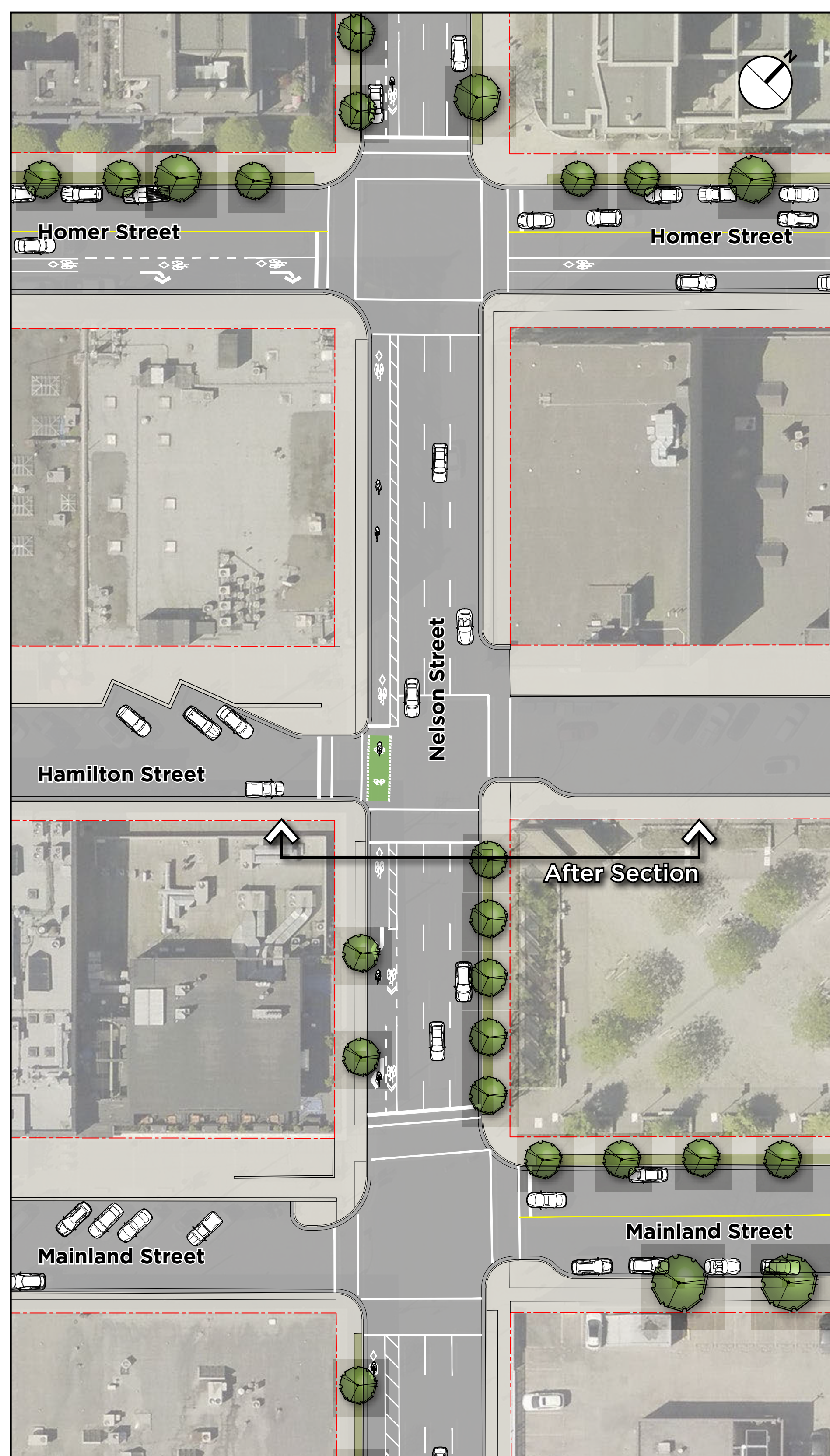
Cross Section: After



Plan: Before



Plan: After



3.2 DOWNTOWN BIKE NETWORK EXPANSION

Nelson Street: Richards St to Beatty St

Overall Plan

