

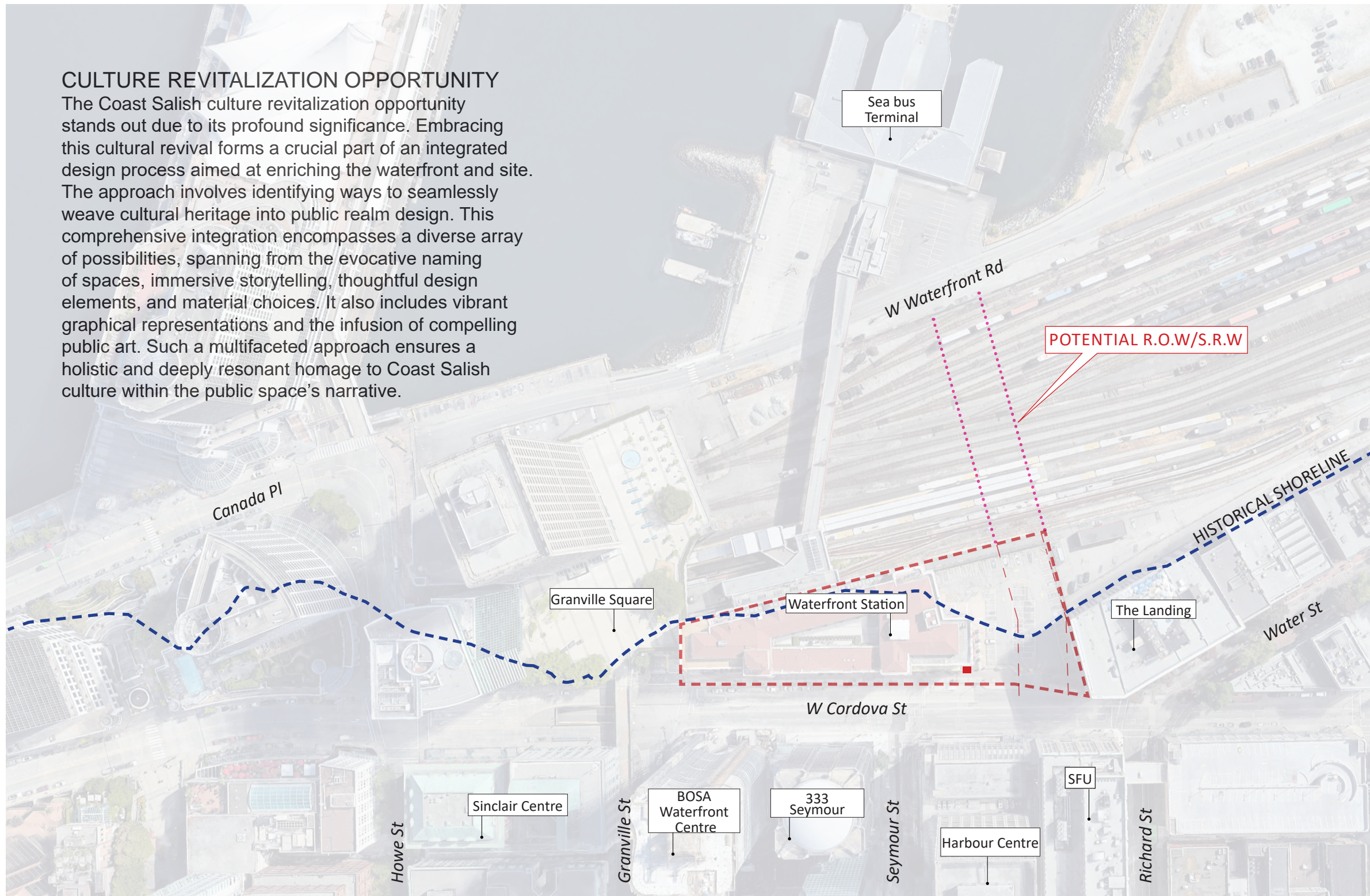
01 Site Introduction



01 Site Introduction

HISTORY OF THE LAND and OPPORTUNITIES
K'emk'emeláy - the place of many maple trees

CULTURE REVITALIZATION OPPORTUNITY
The Coast Salish culture revitalization opportunity stands out due to its profound significance. Embracing this cultural revival forms a crucial part of an integrated design process aimed at enriching the waterfront and site. The approach involves identifying ways to seamlessly weave cultural heritage into public realm design. This comprehensive integration encompasses a diverse array of possibilities, spanning from the evocative naming of spaces, immersive storytelling, thoughtful design elements, and material choices. It also includes vibrant graphical representations and the infusion of compelling public art. Such a multifaceted approach ensures a holistic and deeply resonant homage to Coast Salish culture within the public space's narrative.



1868, Indigenous Community in Coal Harbour.



BCIT Campus Beedie Plaza.

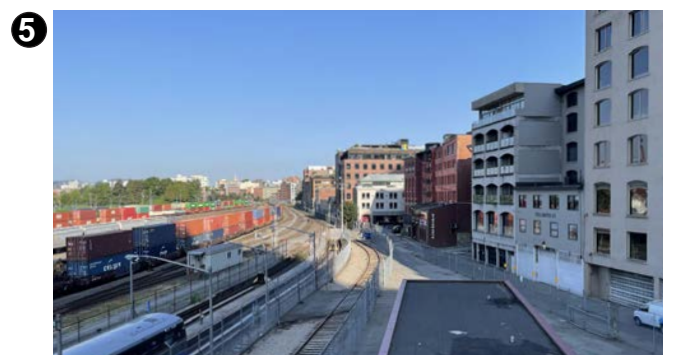
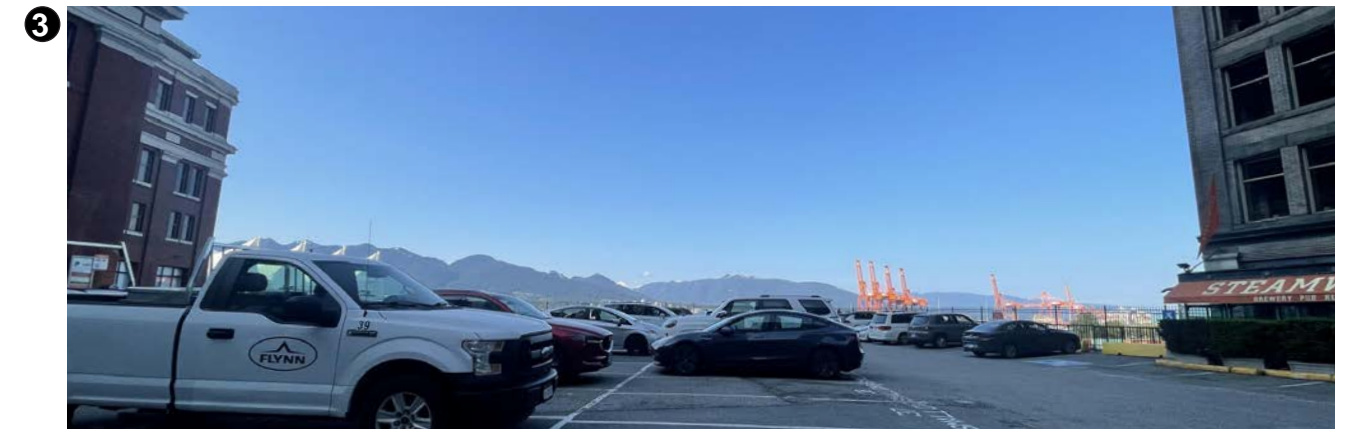
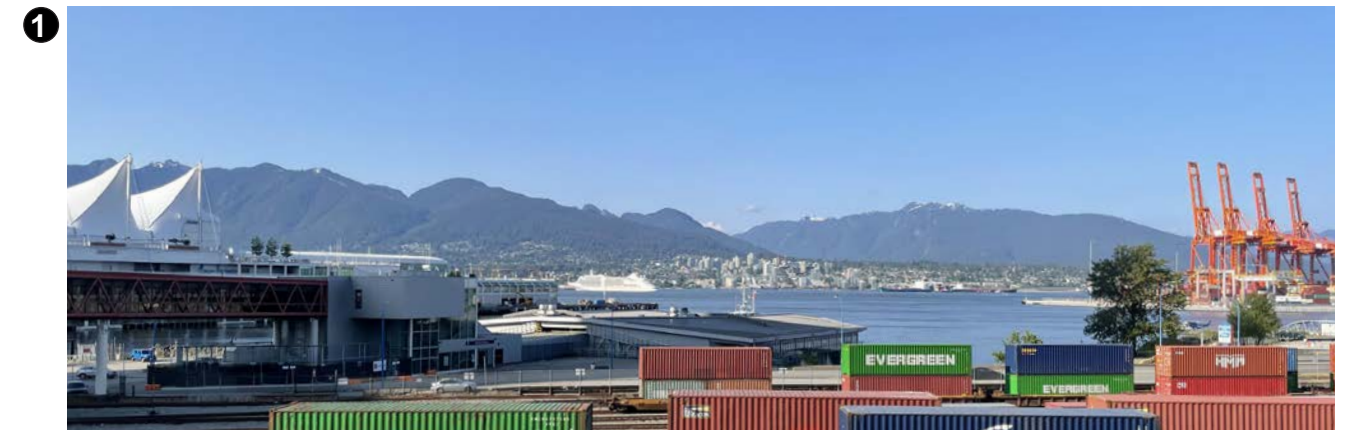
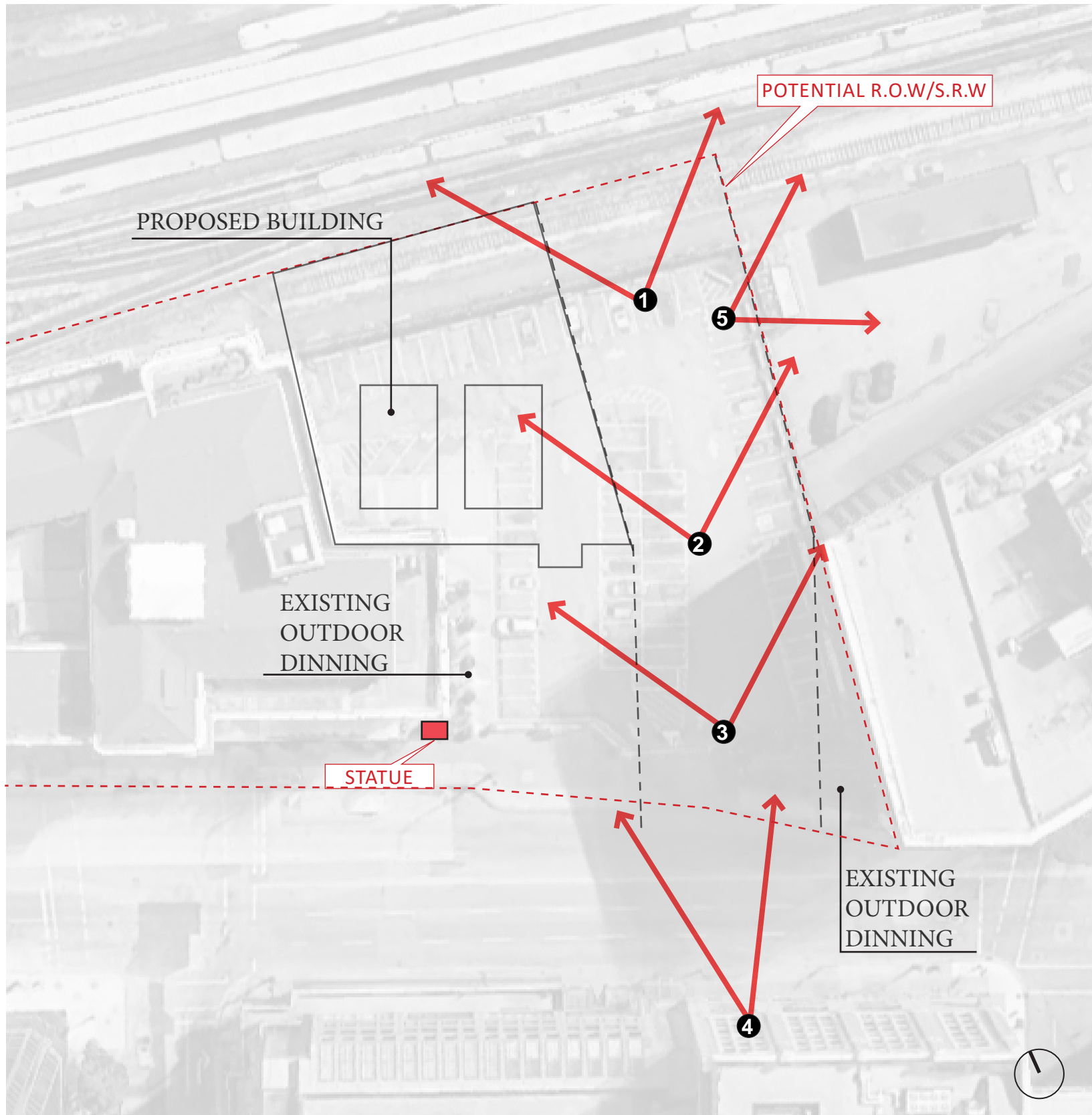


UBC Gage Residence, (By Kelly Cannell)



UBC Welcome Pole (By Brent Sparrow J)

01 Site Introduction - Views changing on site

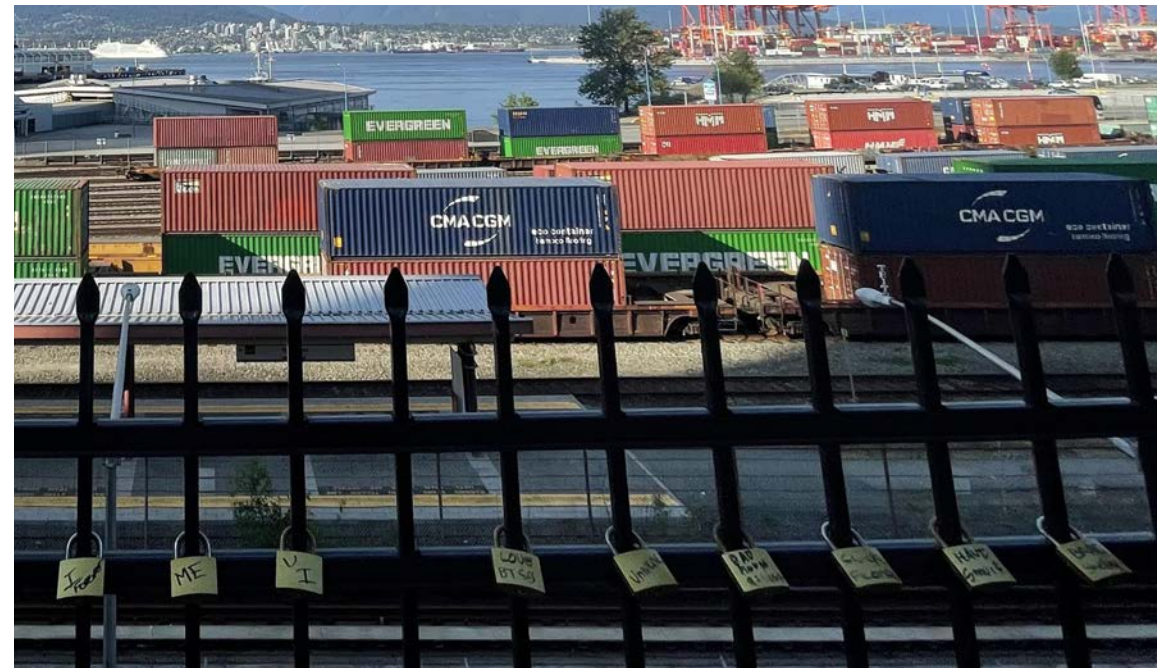


01 Site Introduction - Views and People

View from the north end



People look out of the parking lot

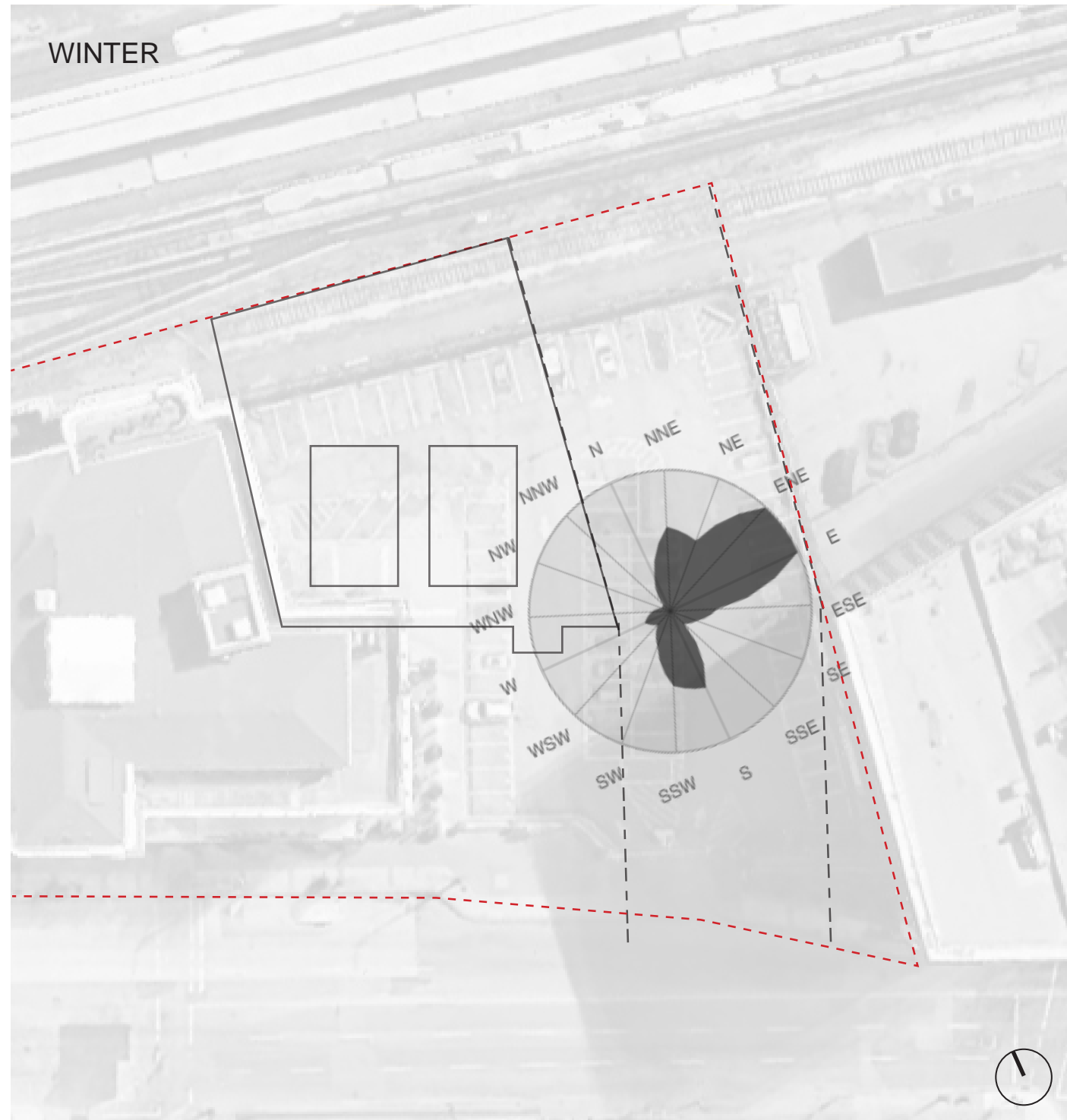


Locks on the fence

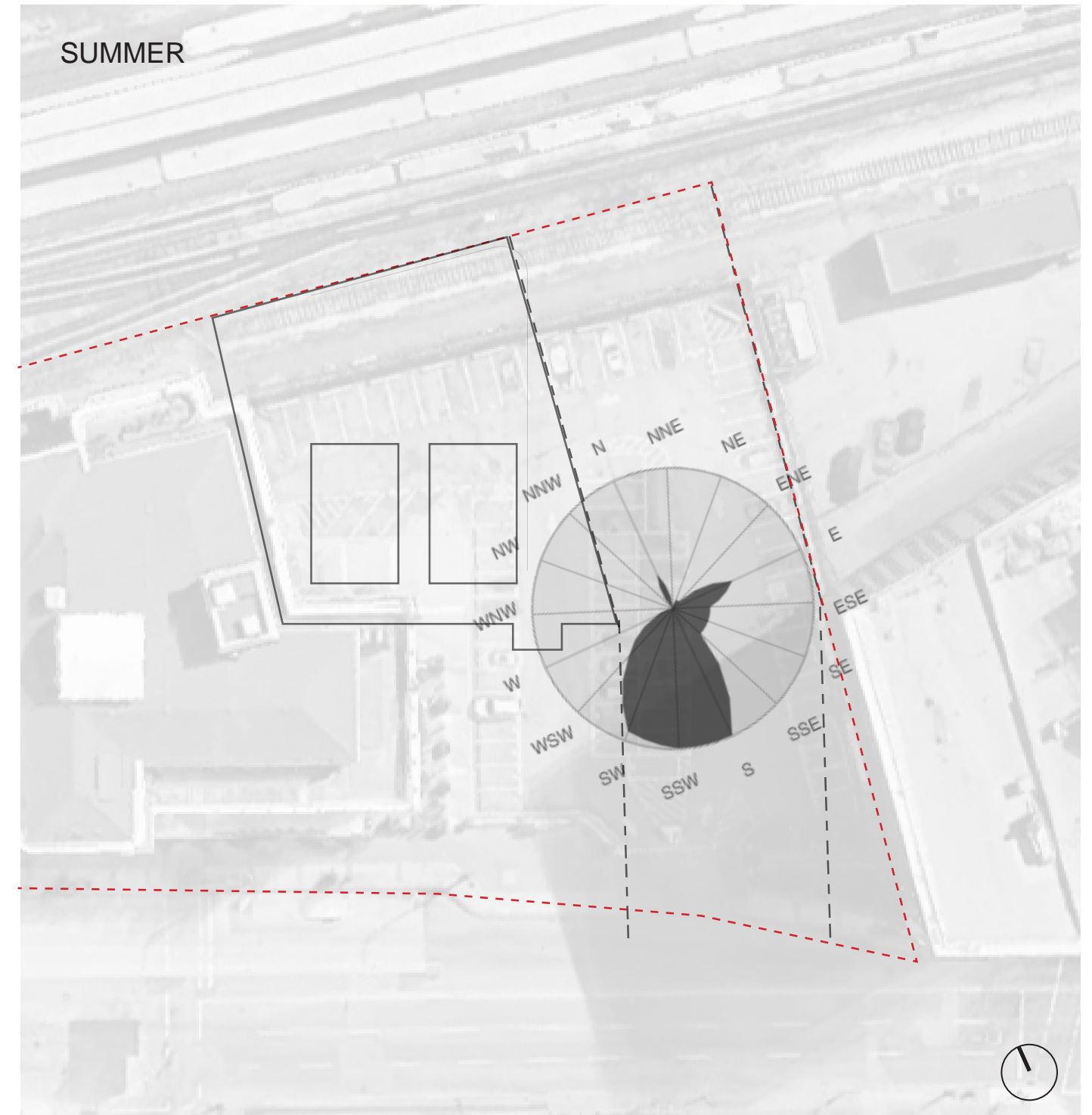


View from SFU 2nd floor

01 Site Introduction - Wind direction distribution

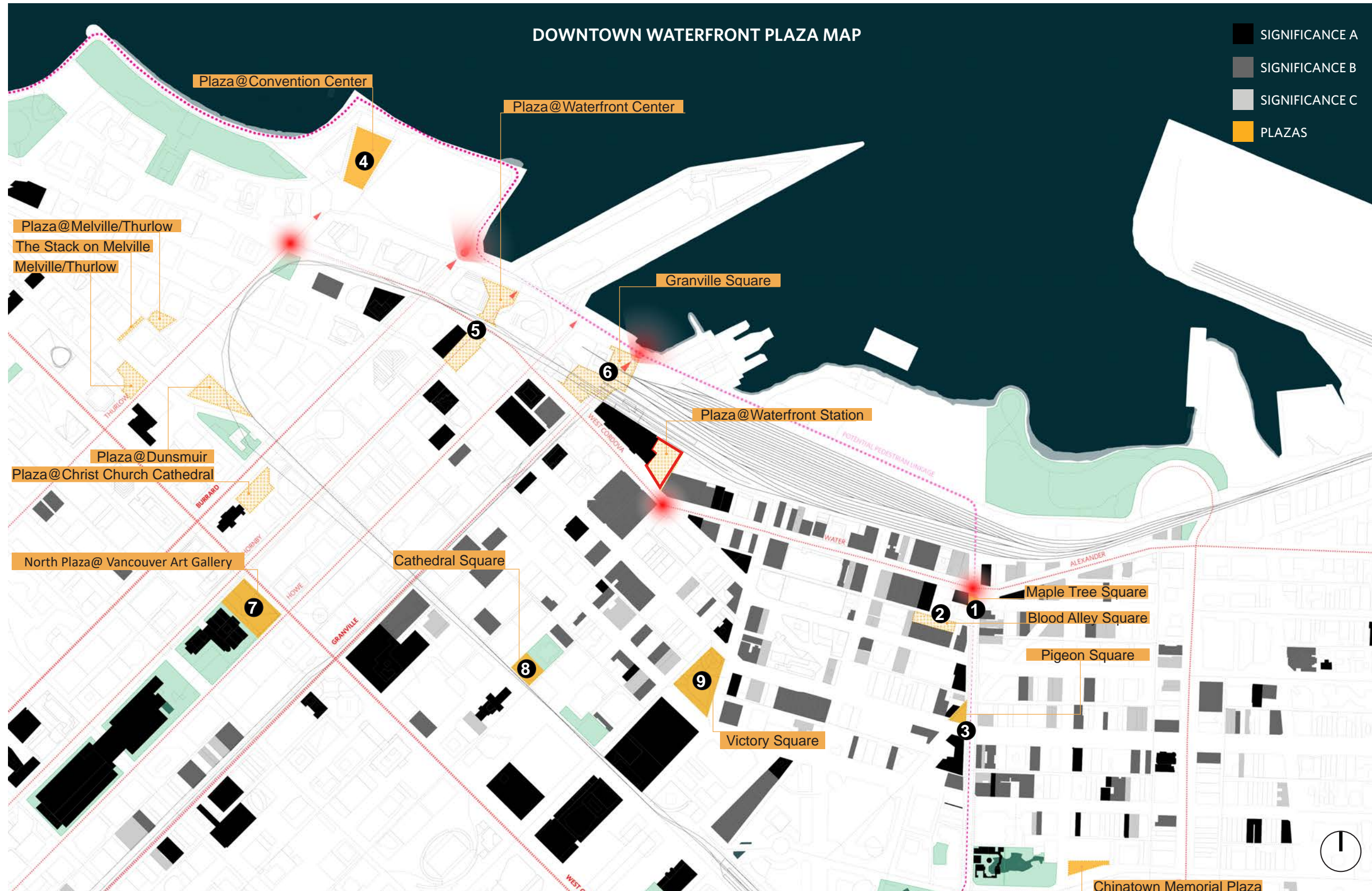


WIND DISTRIBUTION
February - Avg (2007 - 2023)



WIND DISTRIBUTION
August - Avg (2007 - 2023)

02 Existing Plaza Analysis



02 Existing Plaza Analysis



1. MAPLE TREE SQUARE
1,561 sf
INFORMAL GATHERING SPACE

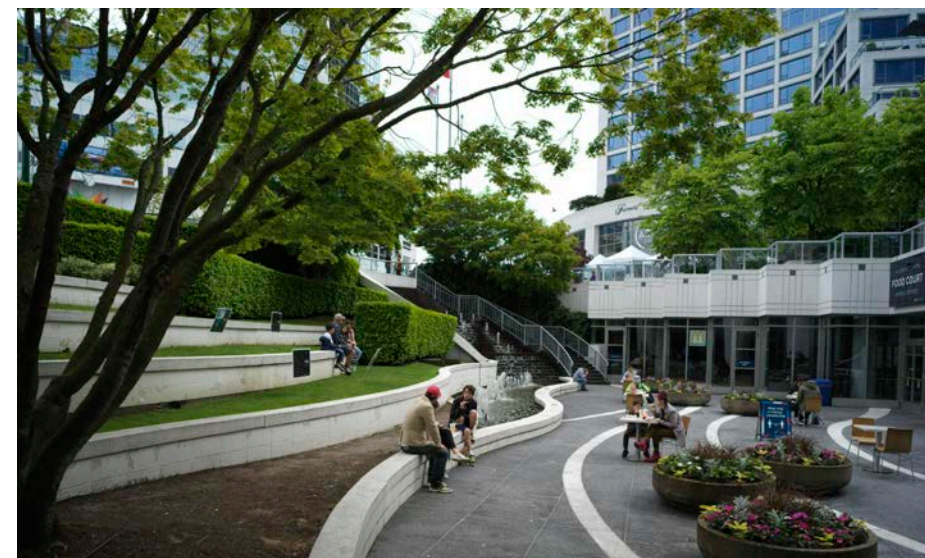
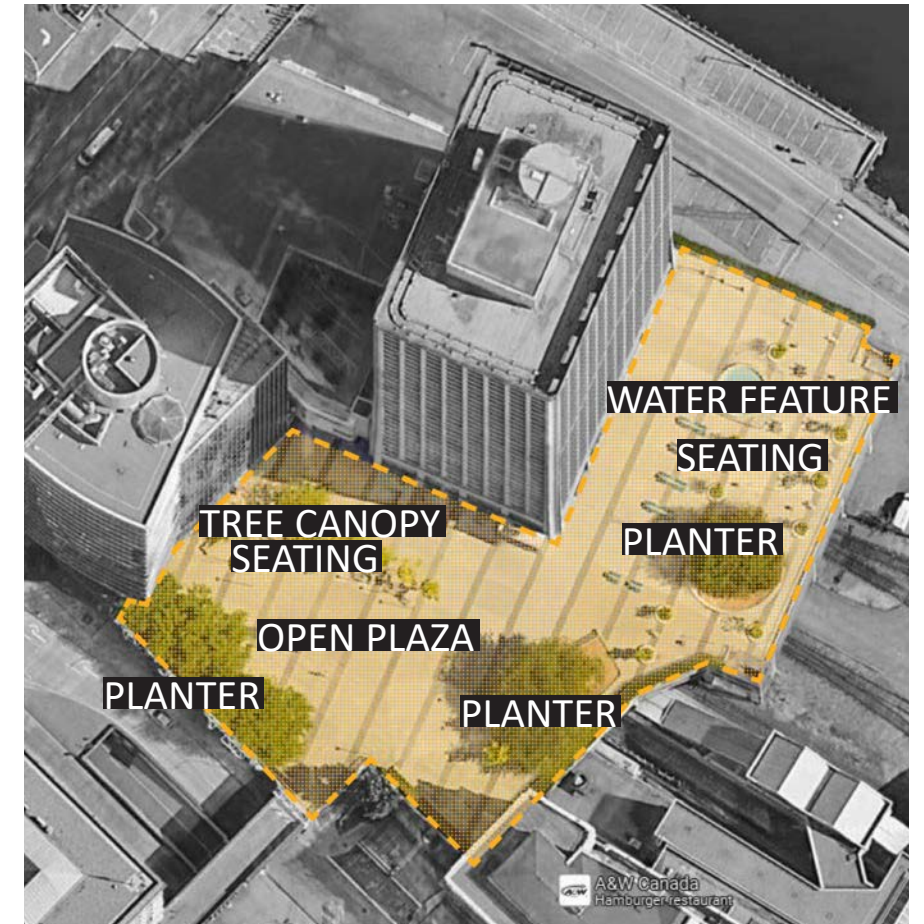
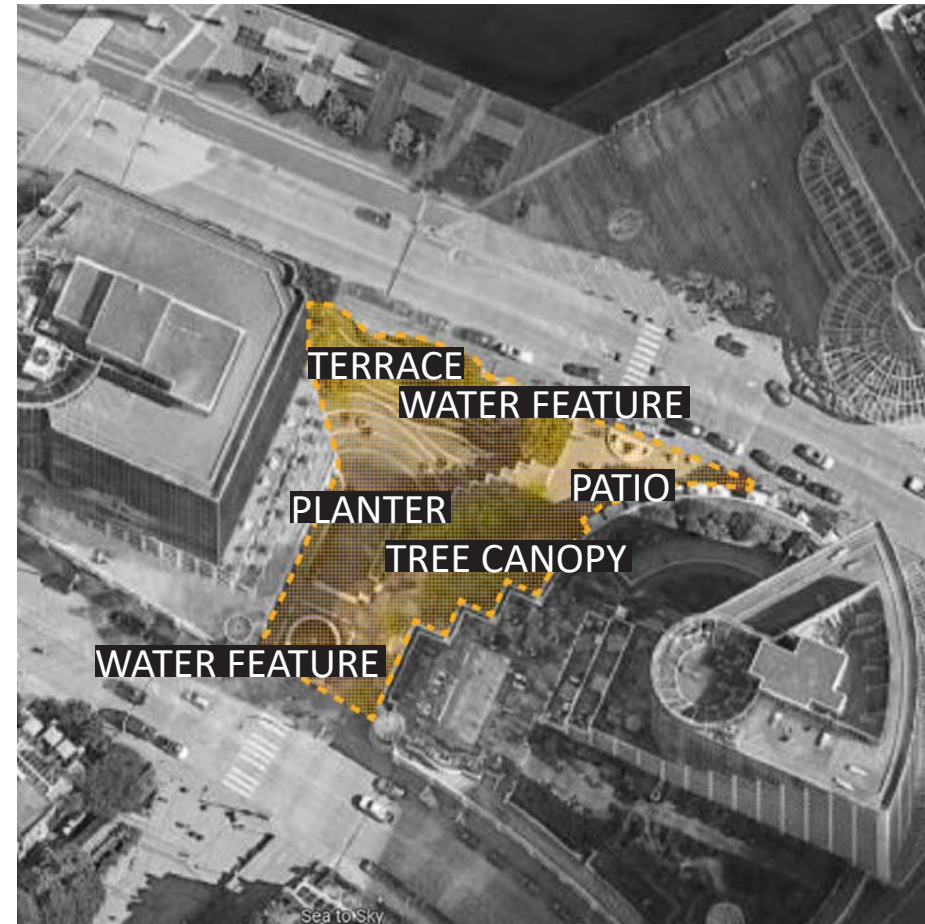
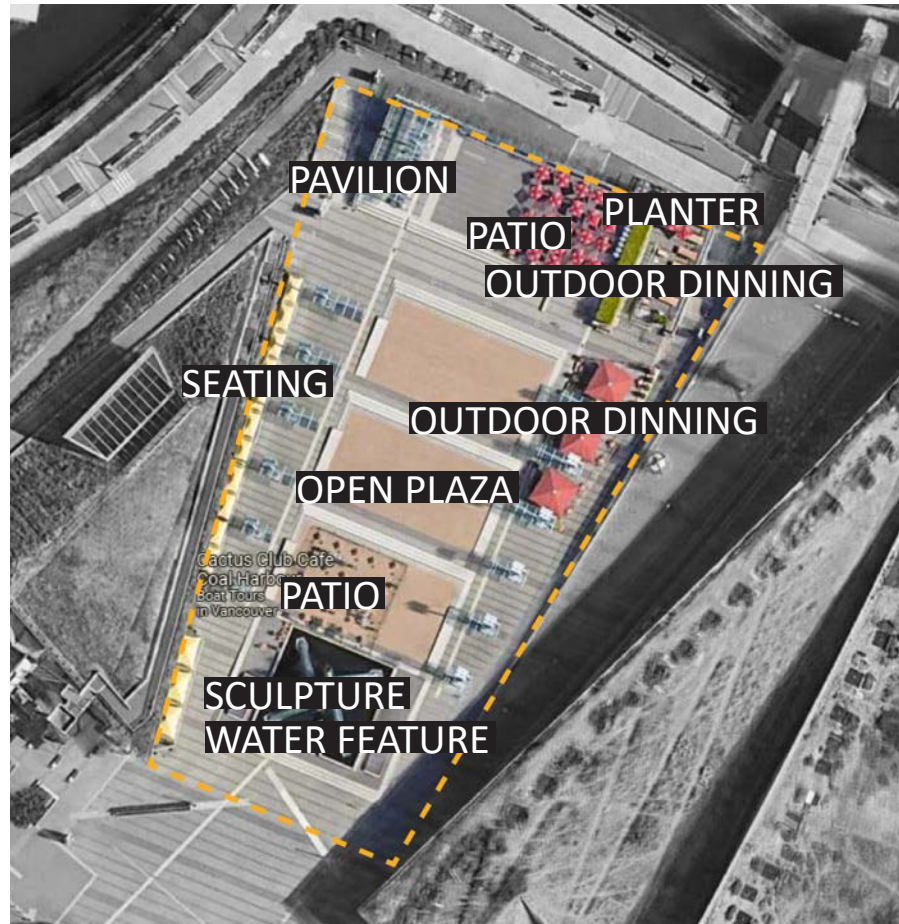


2. BLOOD ALLEY SQUARE
11,577 sf
INFORMAL GATHERING SPACE



3. PIGEON PARK
5,430 sf
INFORMAL GATHERING SPACE/ STREET MARKET

02 Existing Plaza Analysis - Programming

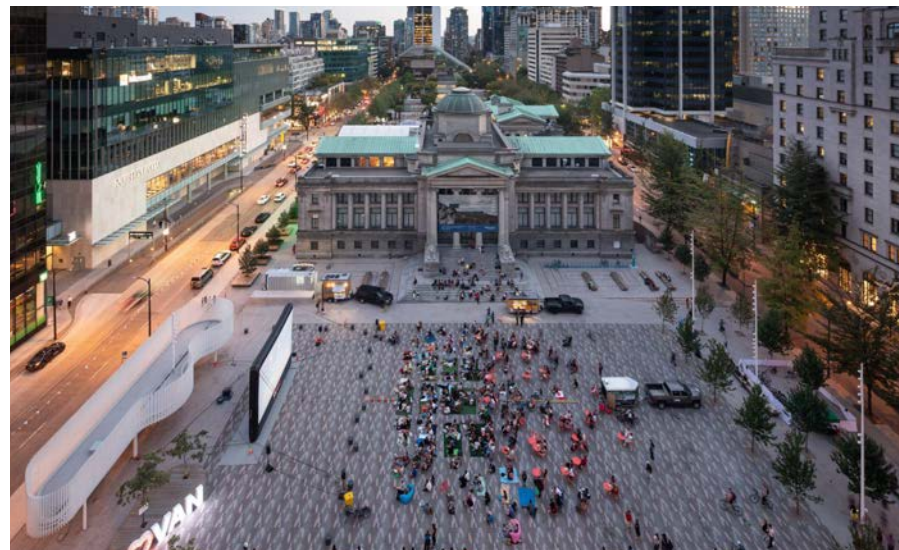


4. CONVENTION CENTRE PLAZA
65,401 sf
MAJOR CITY WIDE EVENT SPACE

5. WATERFRONT CENTRE PLAZA
26,312 sf
INFORMAL GATHERING SPACE/RETAIL

6. GRANVILLE PLAZA
57,824 sf
INFORMAL GATHERING SPACE/RETAIL/
MAJOR DOWNTOWN VIEWPOINT TO WATERFRONT/MINOR EVENTS

02 Existing Plaza Analysis - Programming



7. NORTH PLAZA@ VANCOUVER ART GALLERY

45,4326sf

MAJOR CITY WIDE EVENT SPACE

8. CATHEDRAL SQUARE

31,074 sf

INFORMAL PARK SPACE

9. VICTORY SQUARE

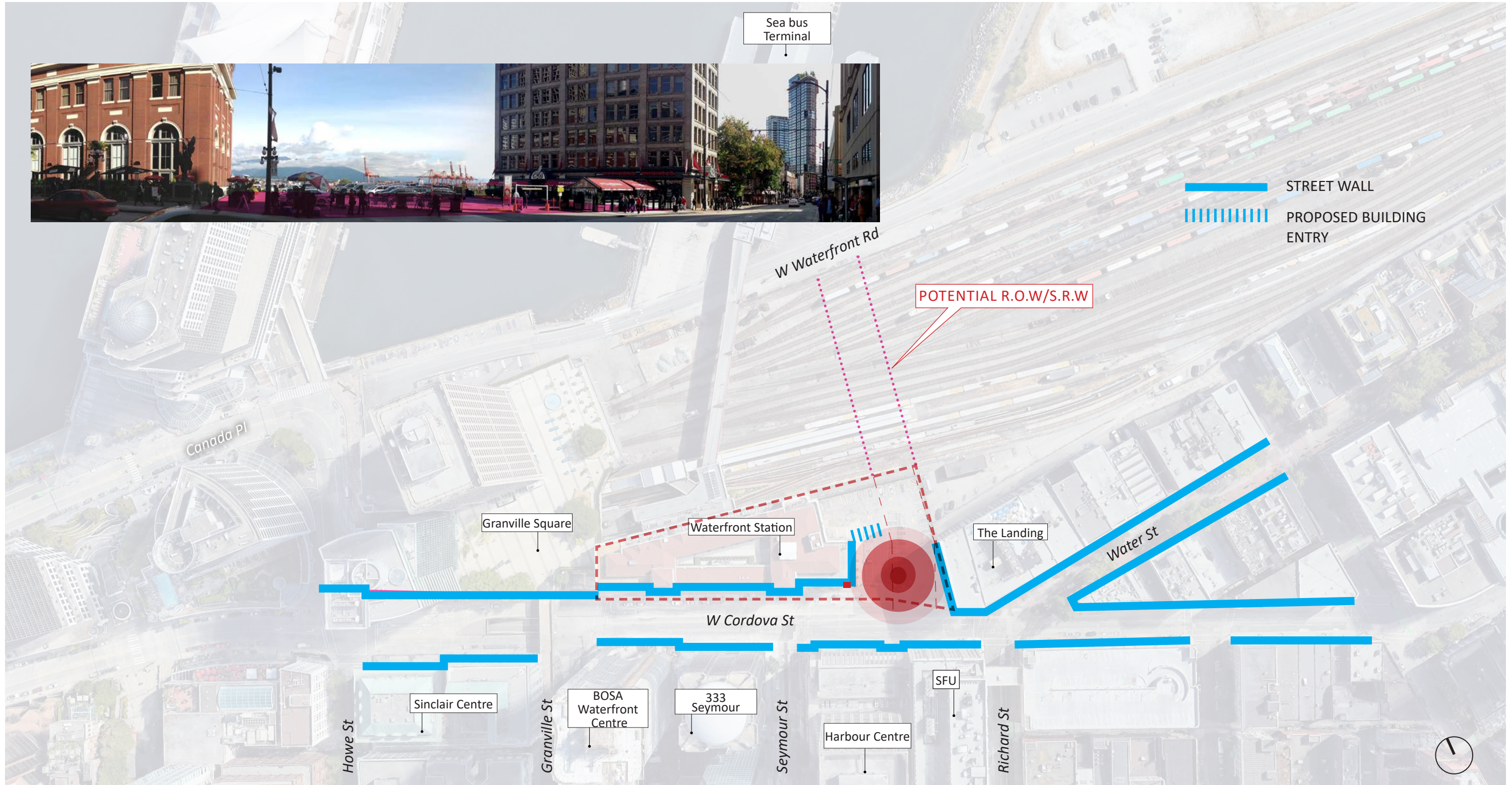
48,364 sf

INFORMAL PARK SPACE/HISTORICAL MEMORIAL /EVENT SPACE

03 Public Realm Principles

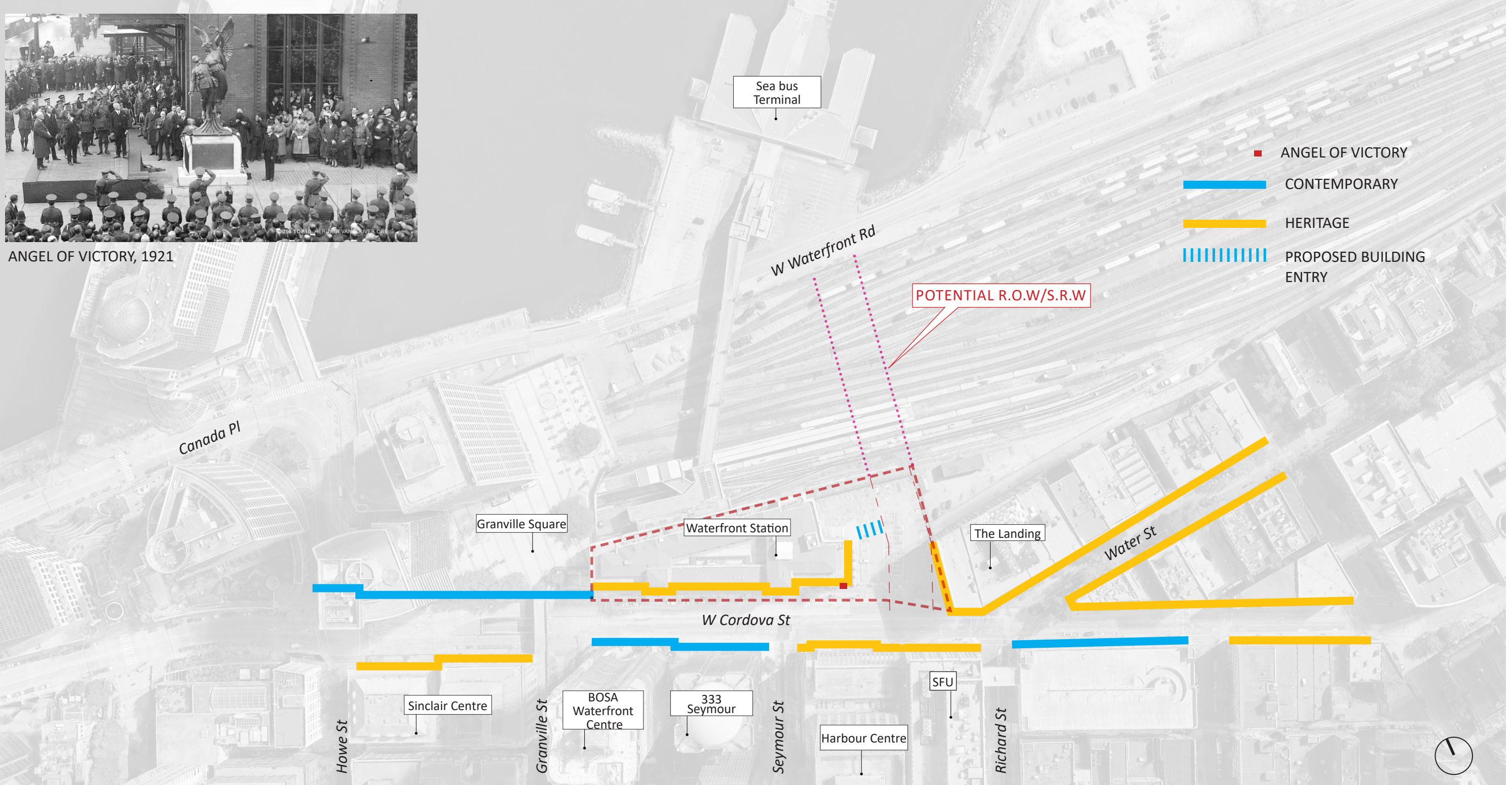
CIVIC PRESENCE

Break in street wall provides civic presence to CP Station.



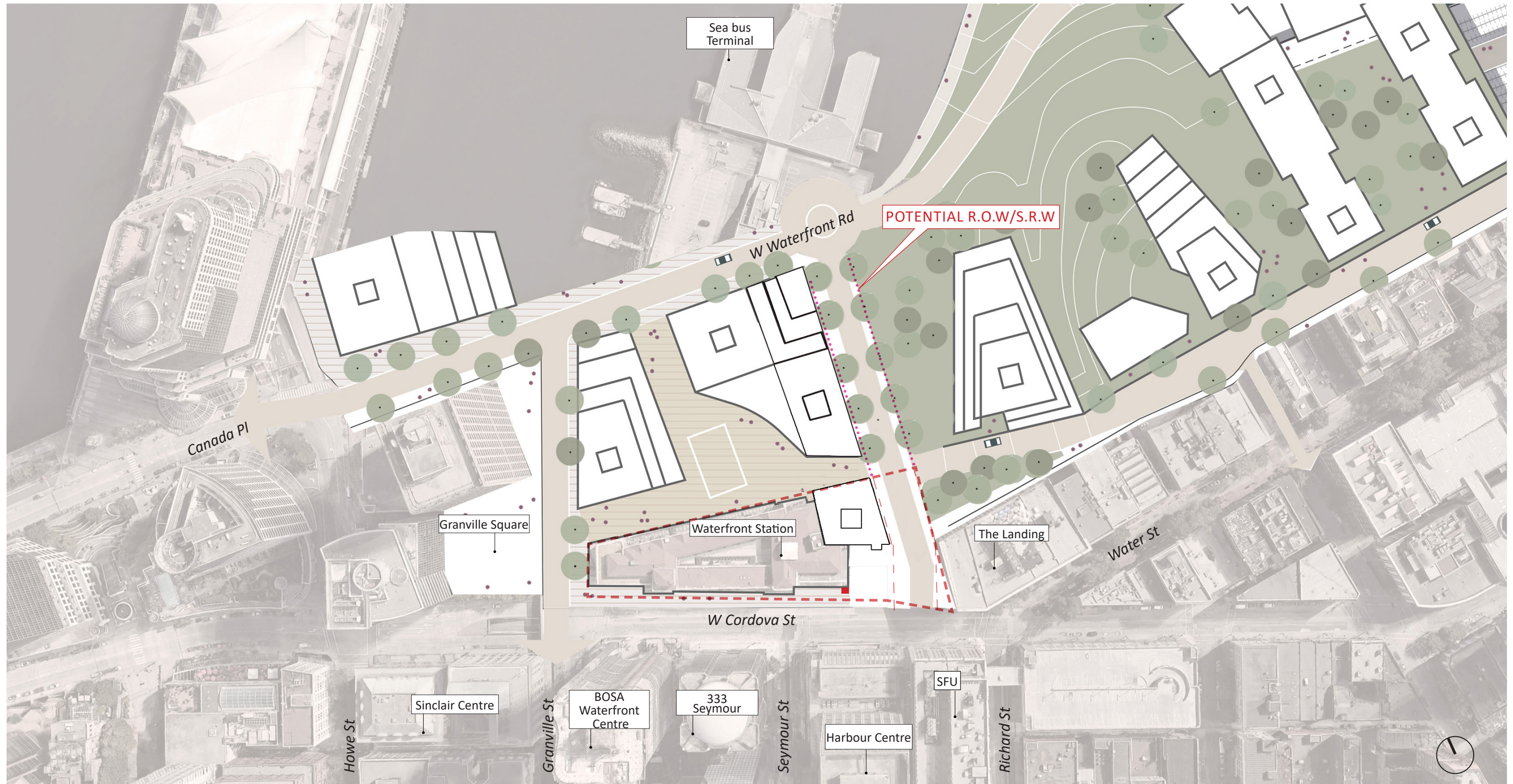
03 Public Realm Principles

CONTEMPORARY vs HERITAGE
Clarity between heritage and contemporary buildings.



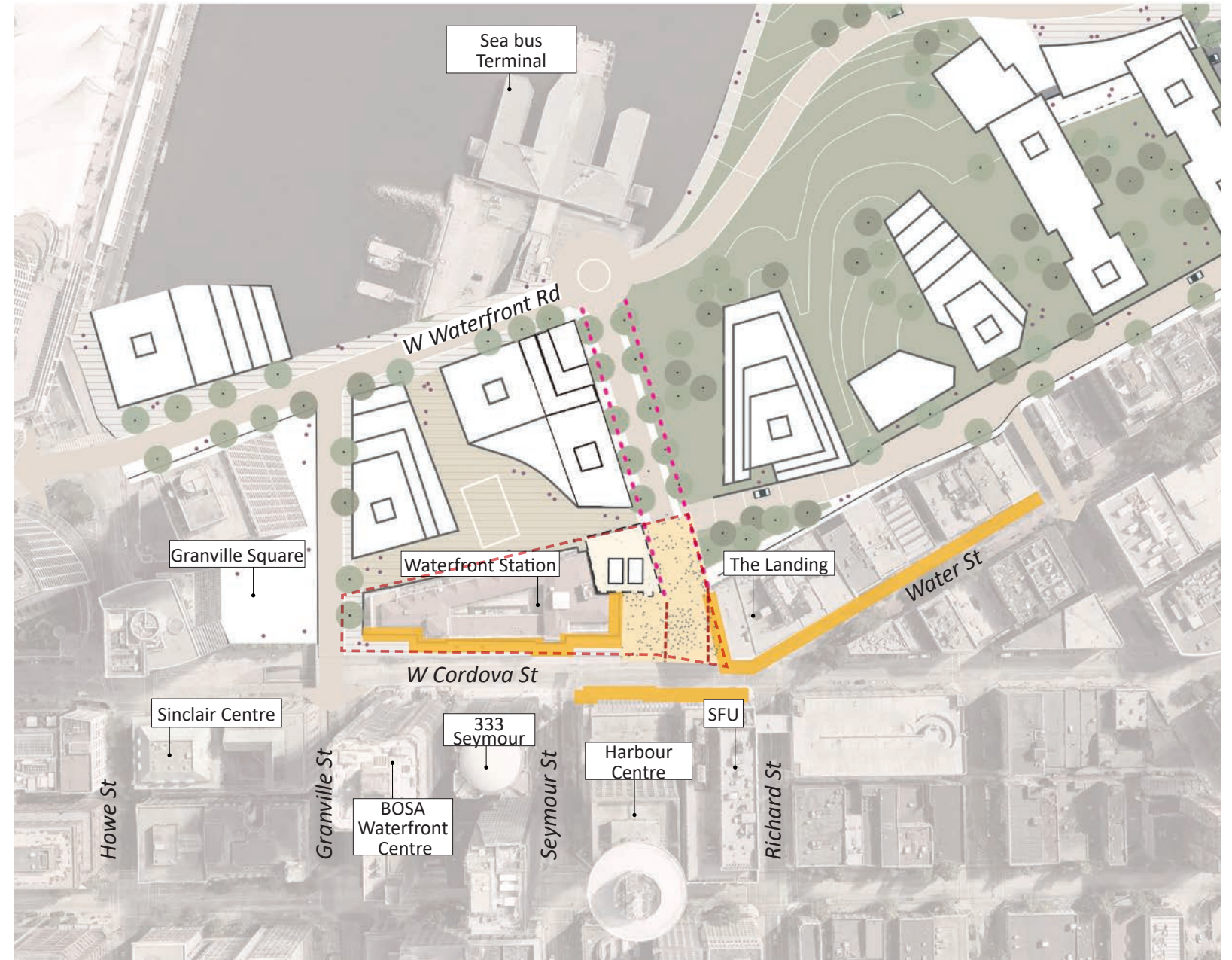
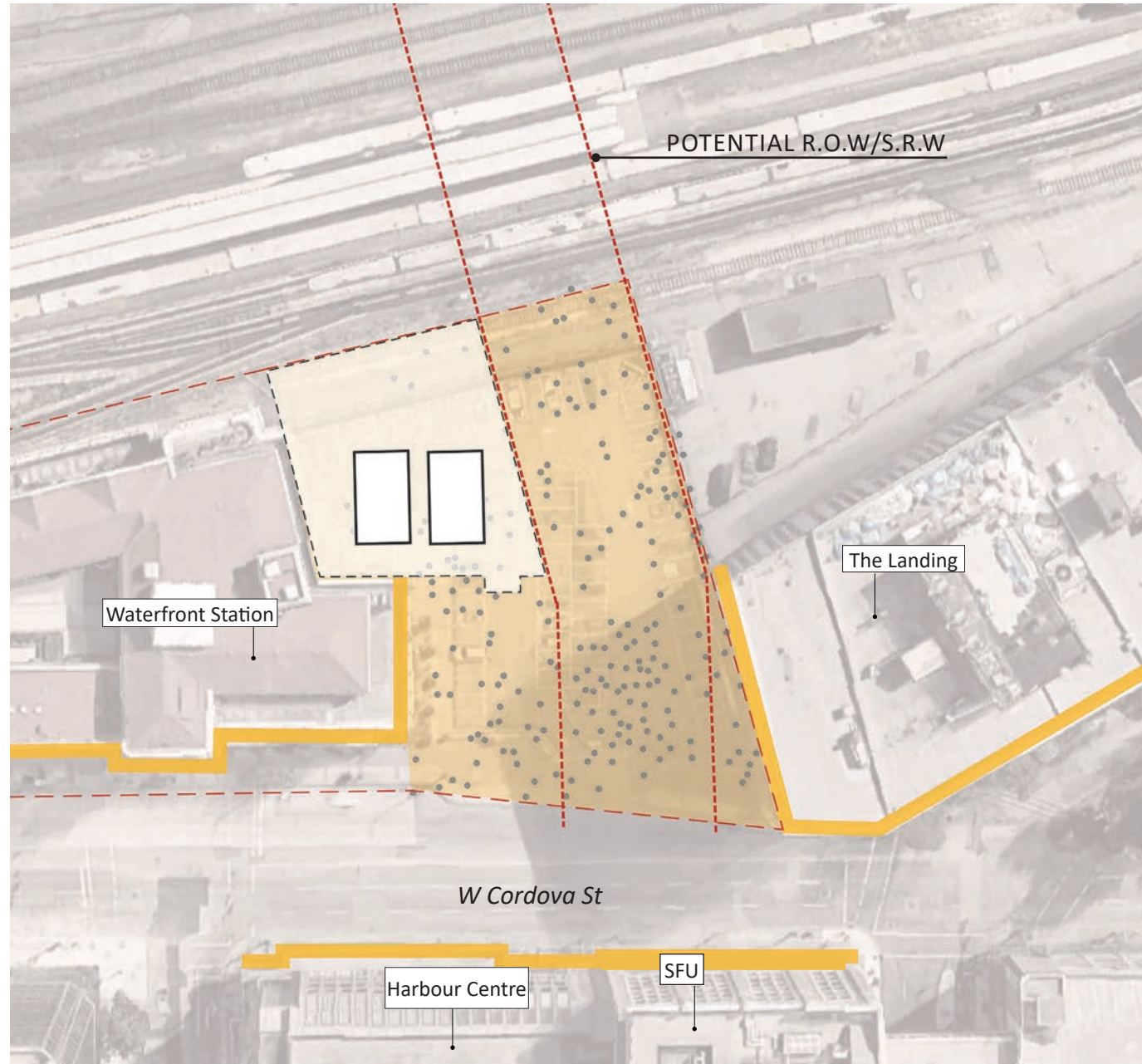
03 Public Realm Principles

INCORPORATE WITH CENTRAL WATERFRONT CHARRETTE PLAN (2022)
Incorporate the plaza design with the long term waterfront plan.



HERITAGE EDGES

Plaza showcases the two heritage buildings (Waterfront Station, The Landing).



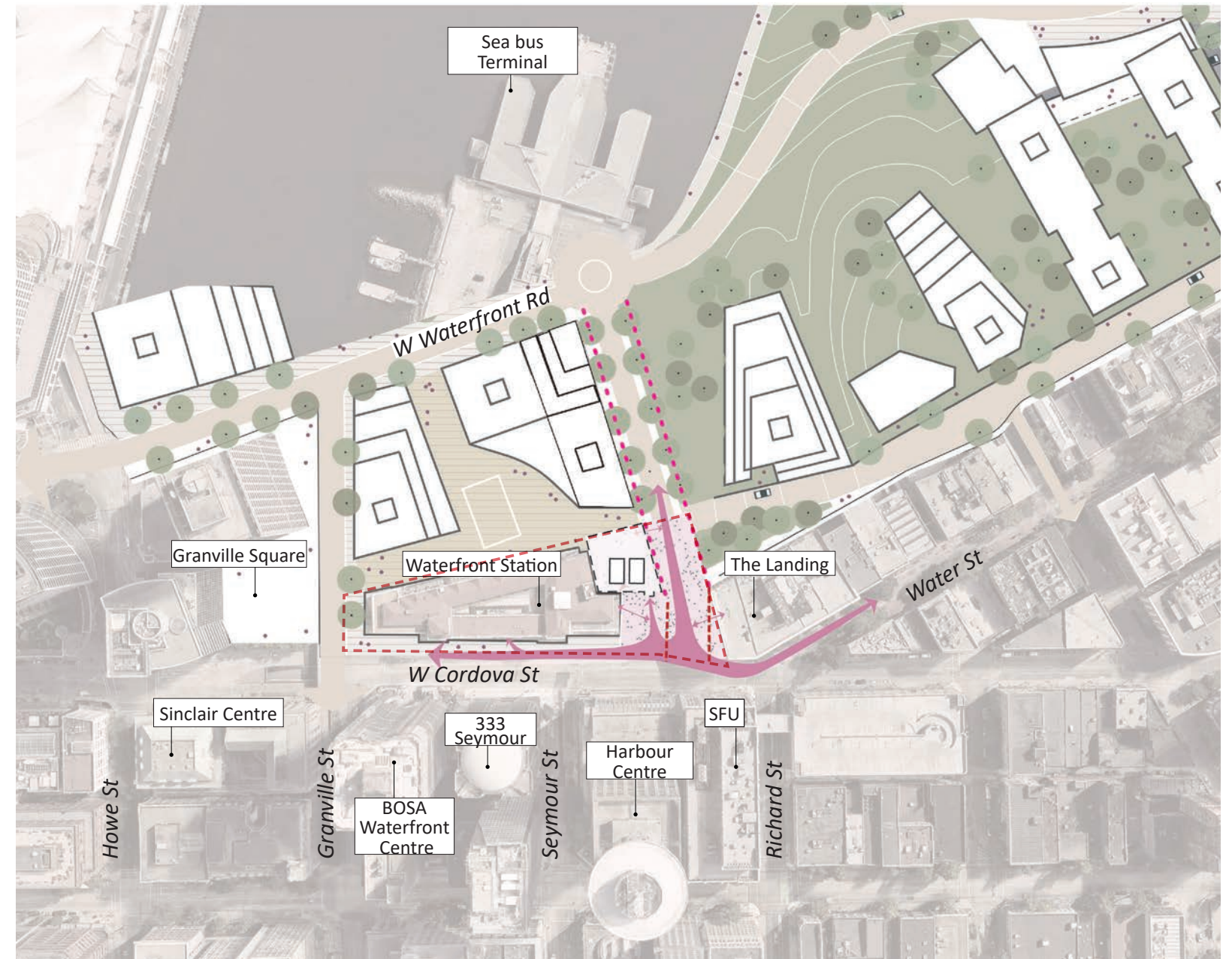
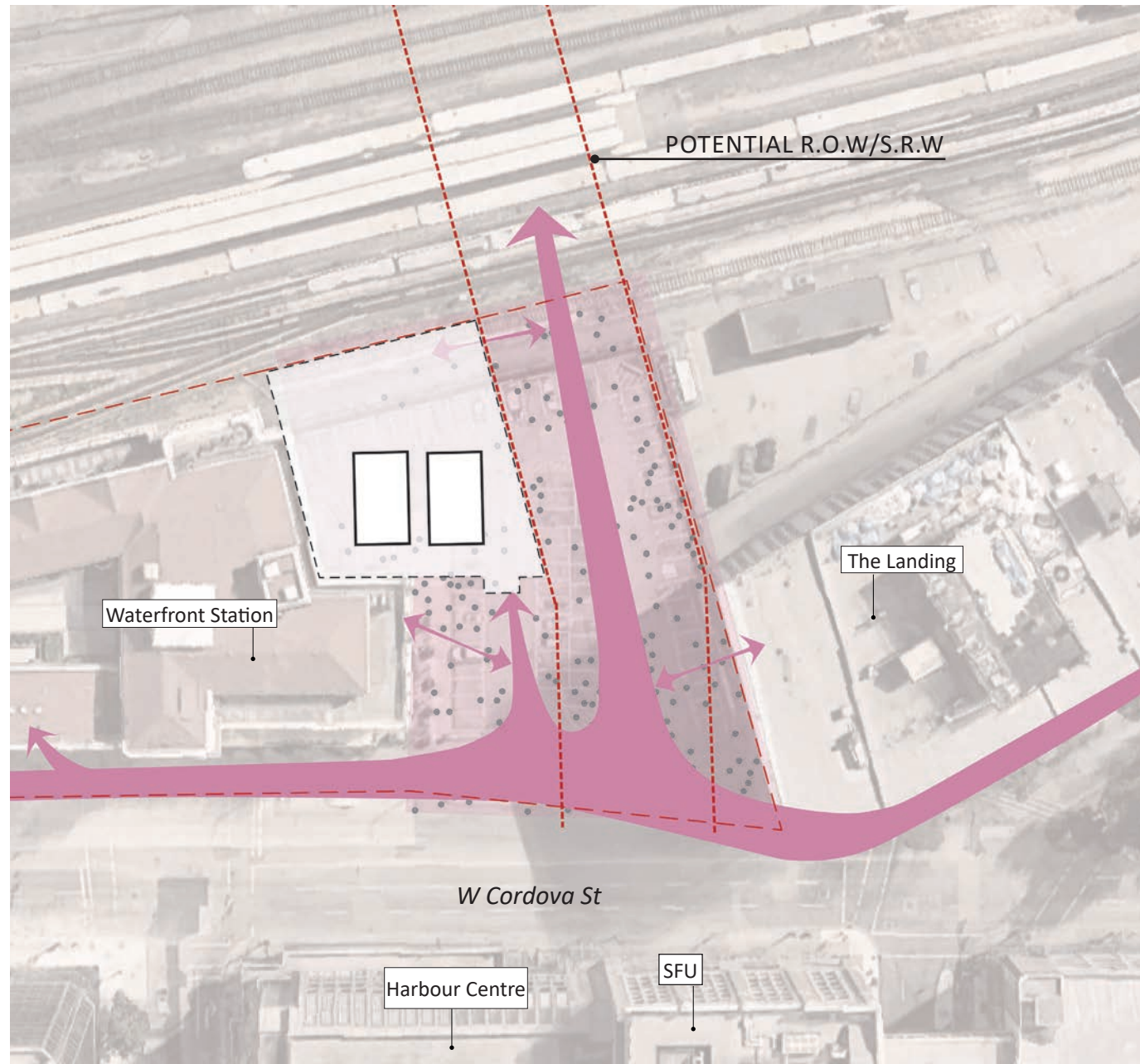
Public Realm with Central Waterfront Charrette Plan



03 Public Realm Principles

CONNECTIVITY

Plaza supports pedestrian movement to the buildings, the future waterfront connection and to the major tourist route between Gastown, Convention Center and cruise ships



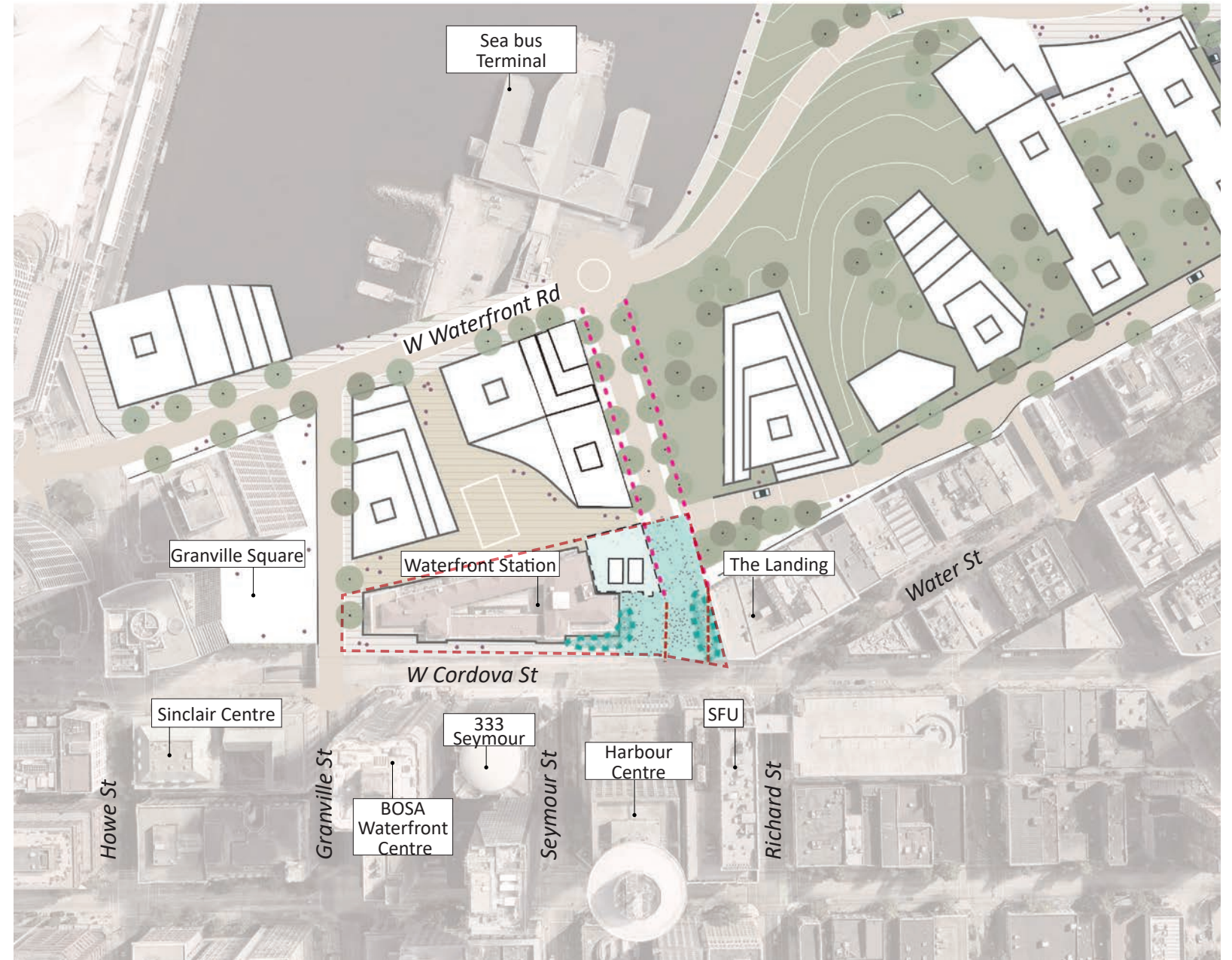
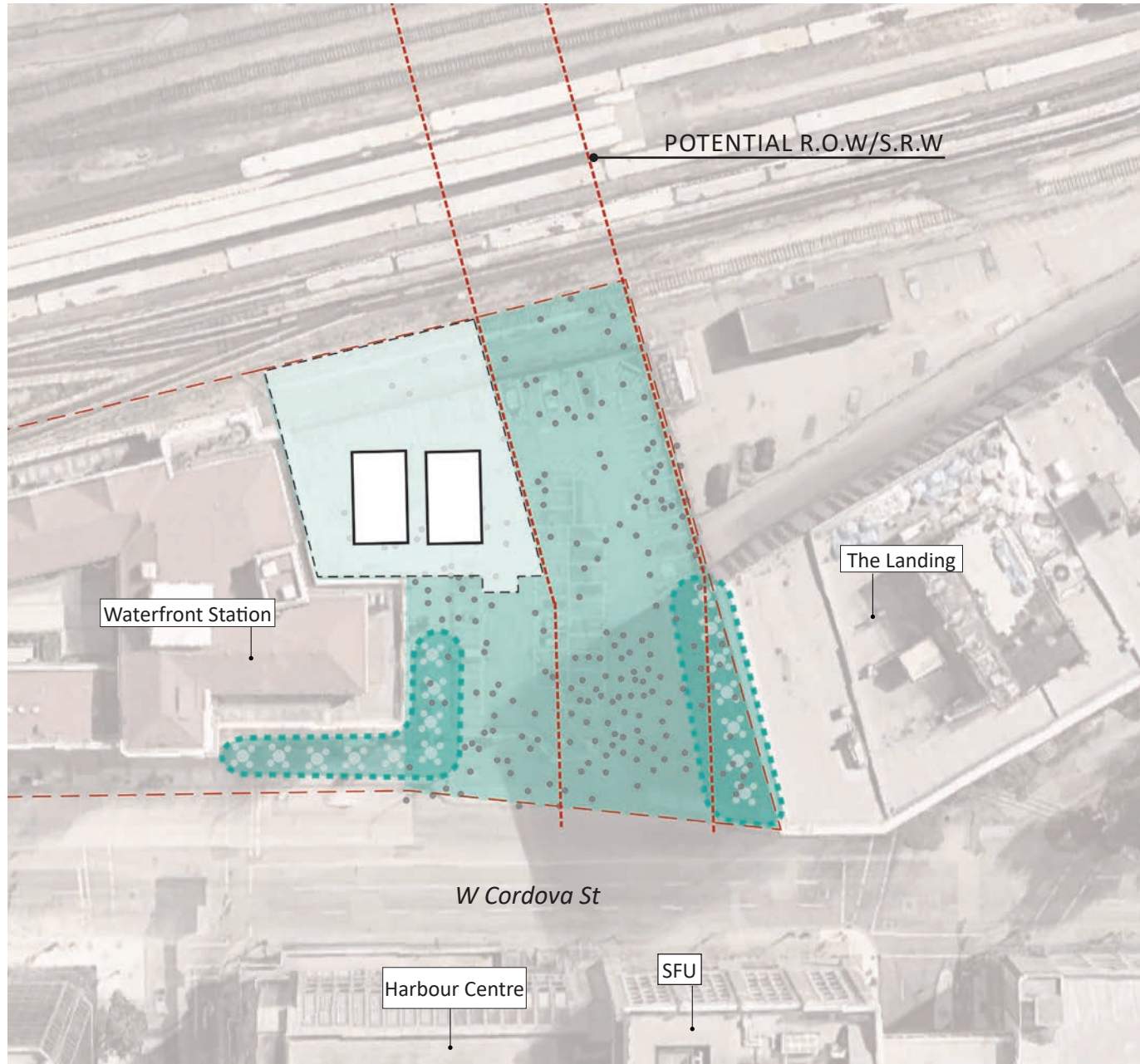
Public Realm with Central Waterfront Charrette Plan



03 Public Realm Principles

ANIMATED EDGES

The plaza would provide for animated edges by providing outdoor patio space for the continuity of adjacent restaurants.



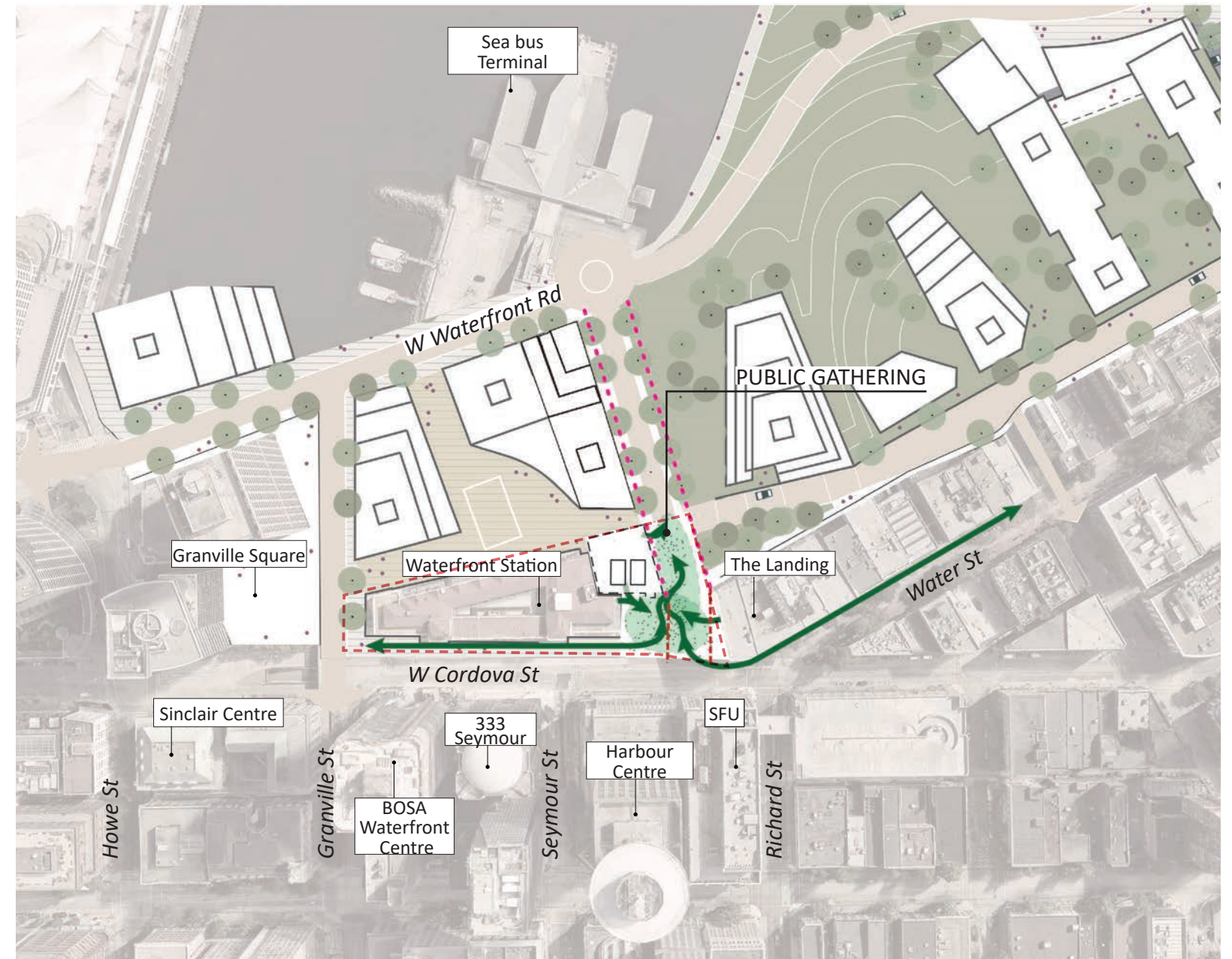
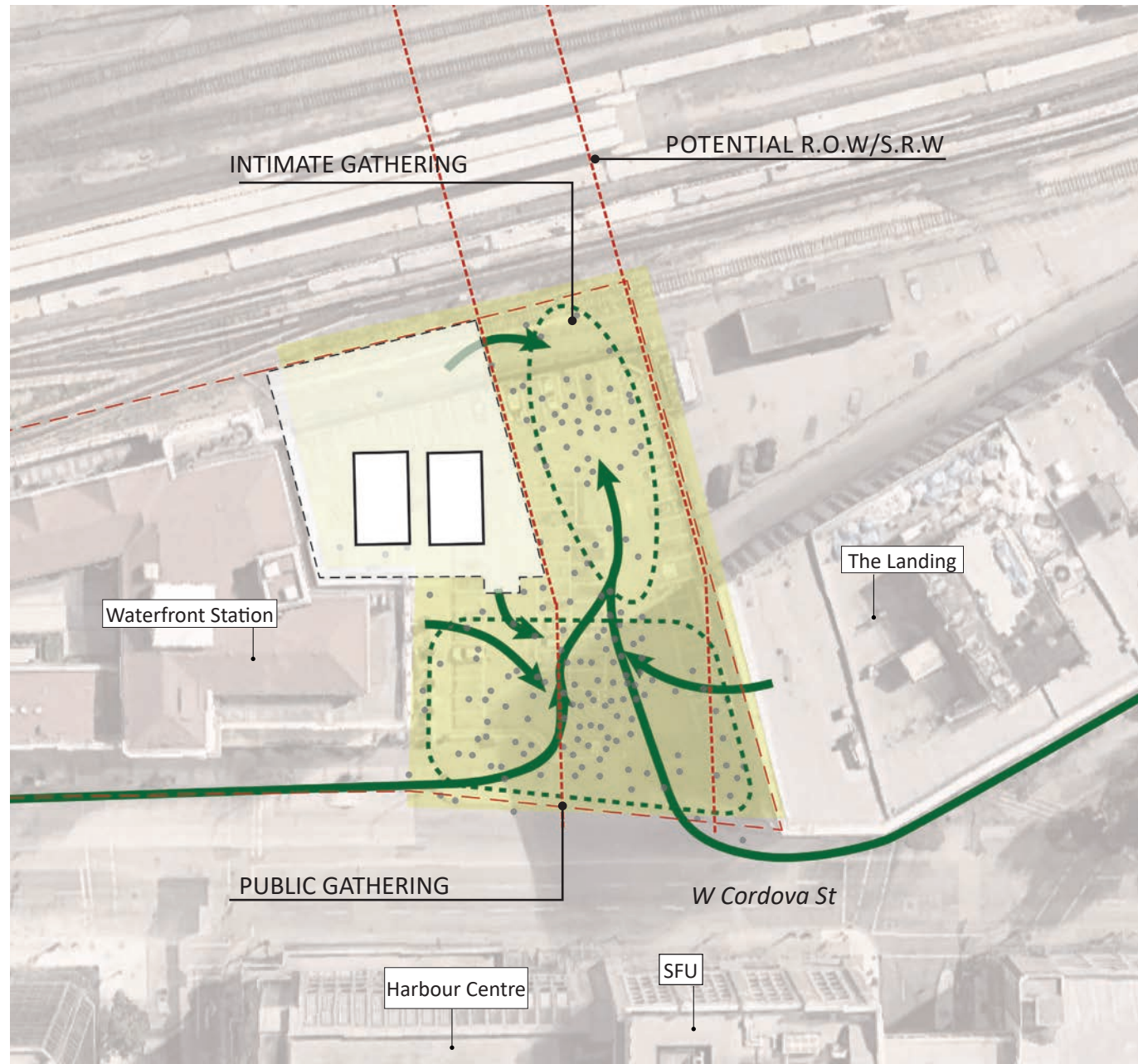
Public Realm with Central Waterfront Charrette Plan



03 Public Realm Principles

SOCIAL GATHERING

The plaza would accommodate informal seating, gathering and harbor viewing.



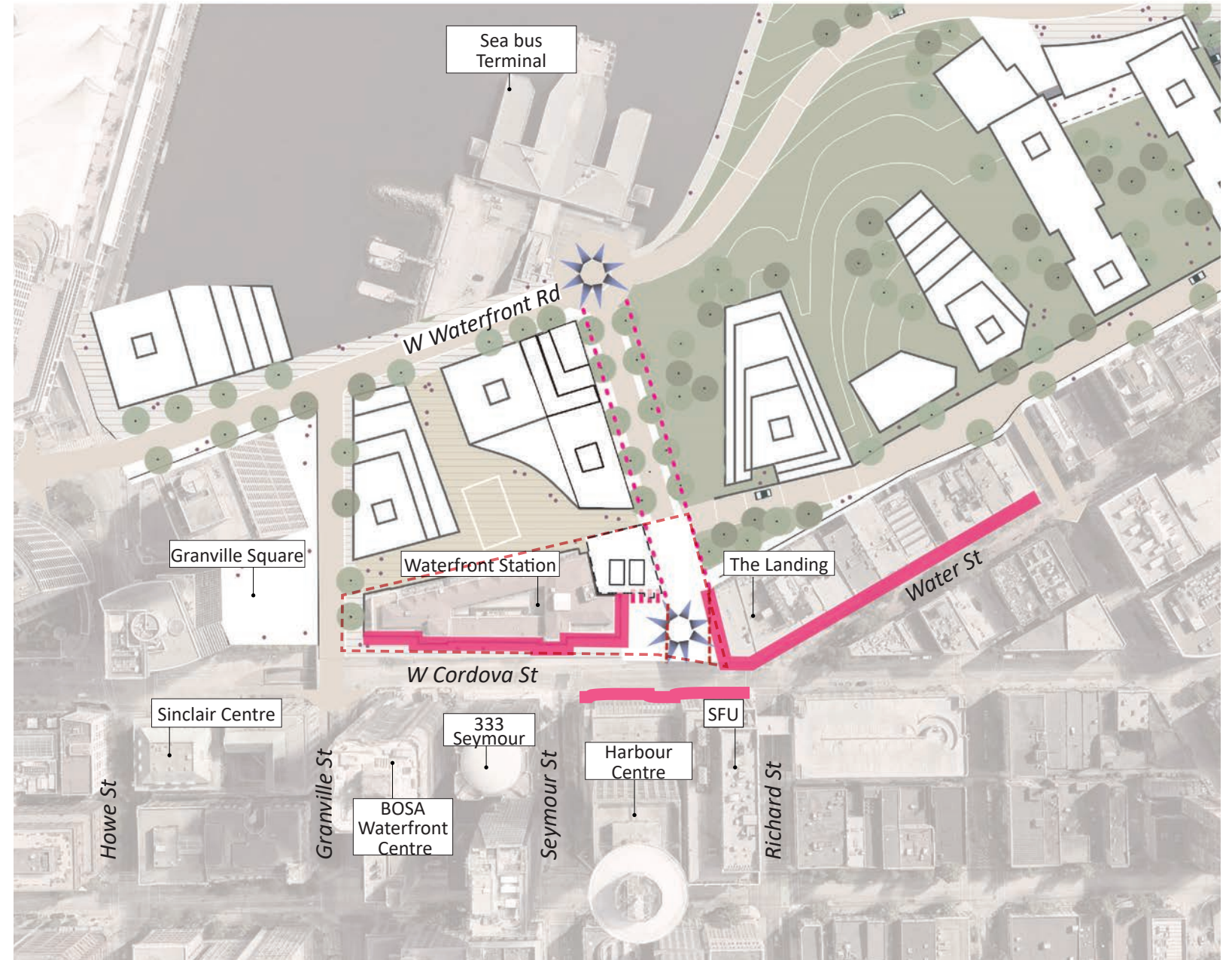
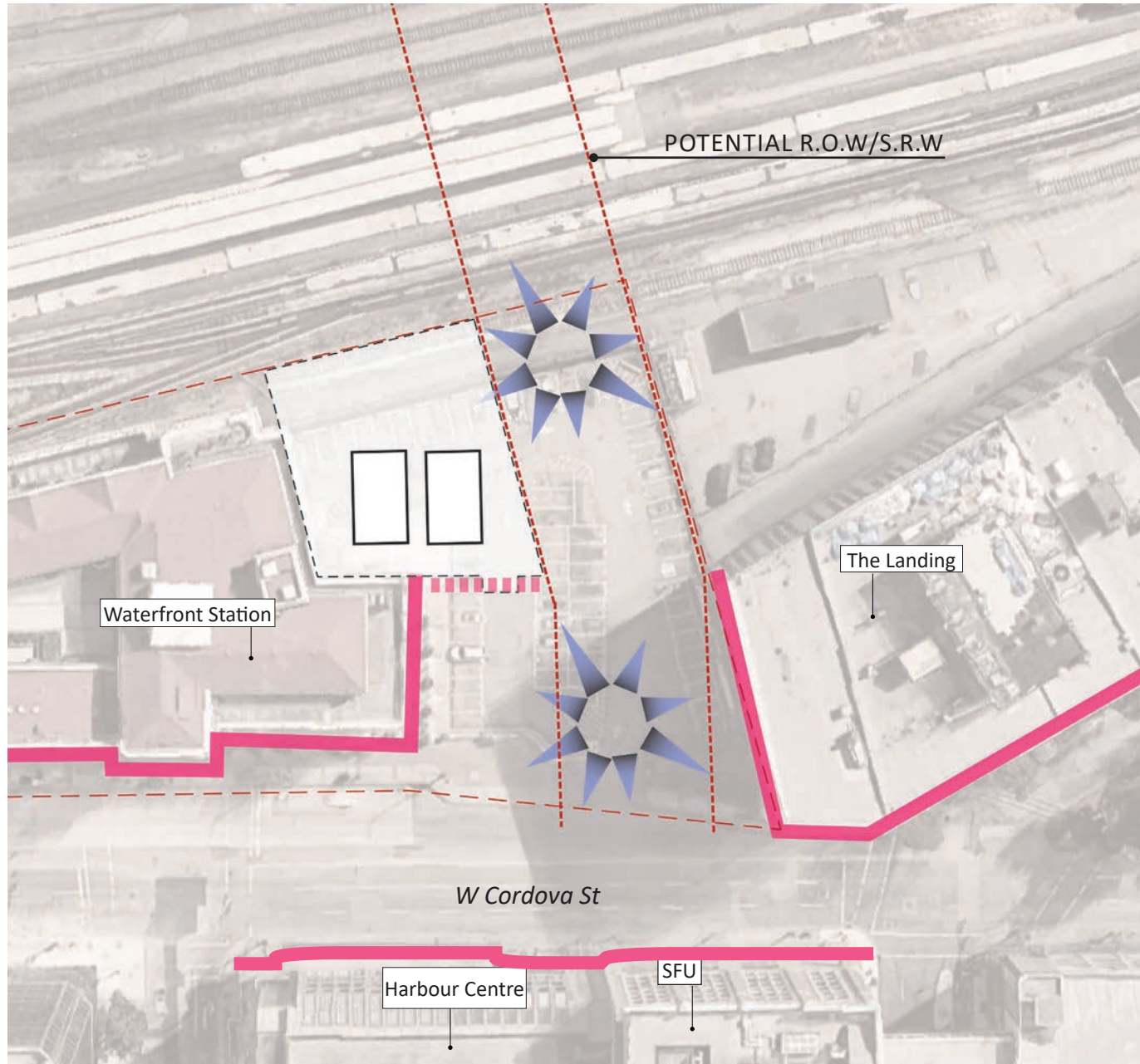
Public Realm with Central Waterfront Charrette Plan



03 Public Realm Principles

VISUAL FOCUS

The potential internal focus (water feature/pop-up gallery/public art).



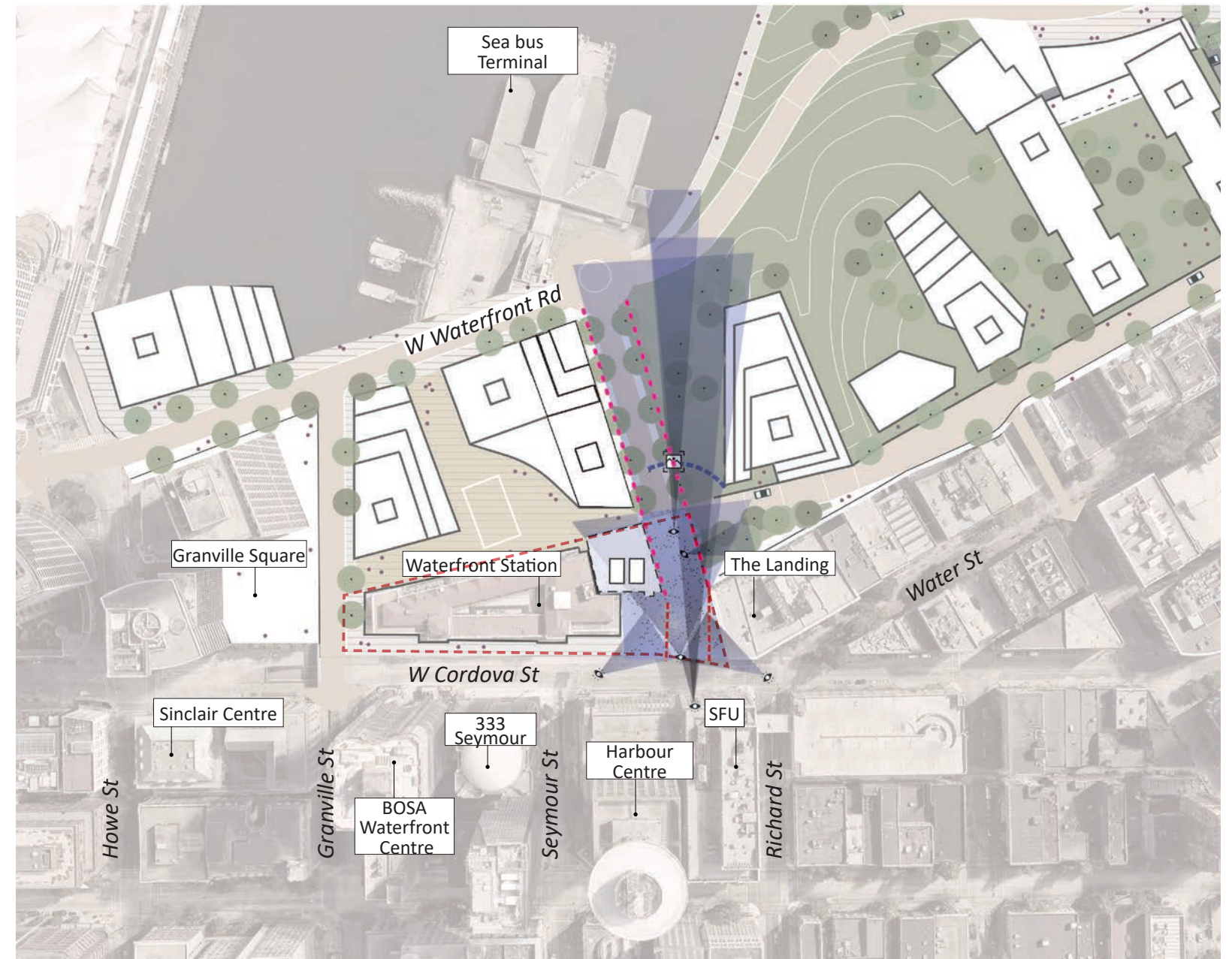
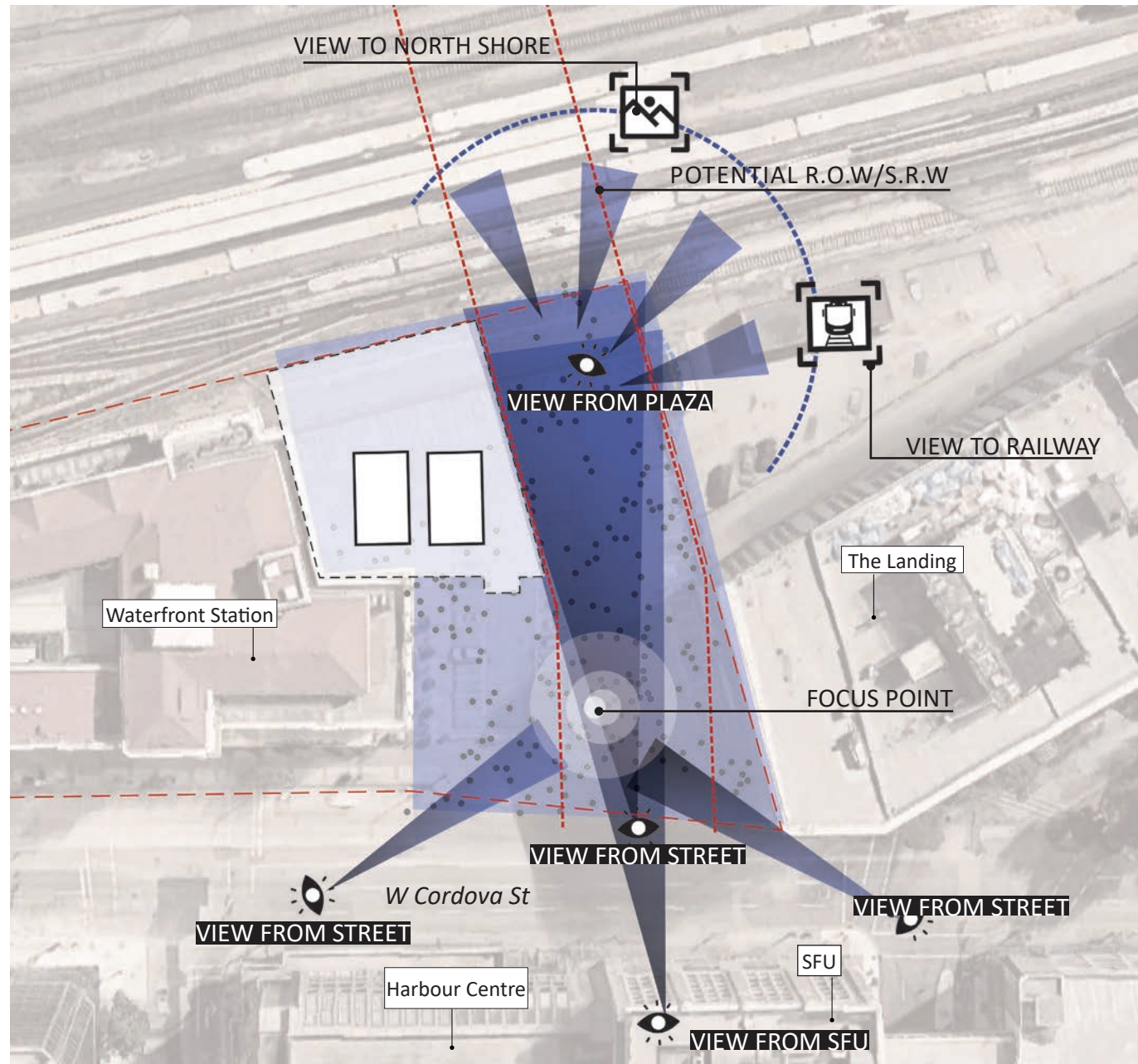
Public Realm with Central Waterfront Charrette Plan



03 Public Realm Principles

CELEBRATE THE VIEWS

A viewing opportunity for the public.



Public Realm with Central Waterfront Charrette Plan



04 Space Framework

DESIGN RATIONALE

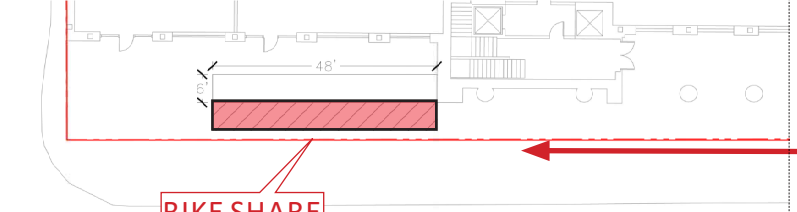
This project was designed with a multifaceted rationale that serves multiple purposes.

Firstly, situated as a pivotal public open space, it serves as a significant stop for city visitors. It is strategically positioned along the primary pedestrian route from the cruise ship and convention center to Gas Town.

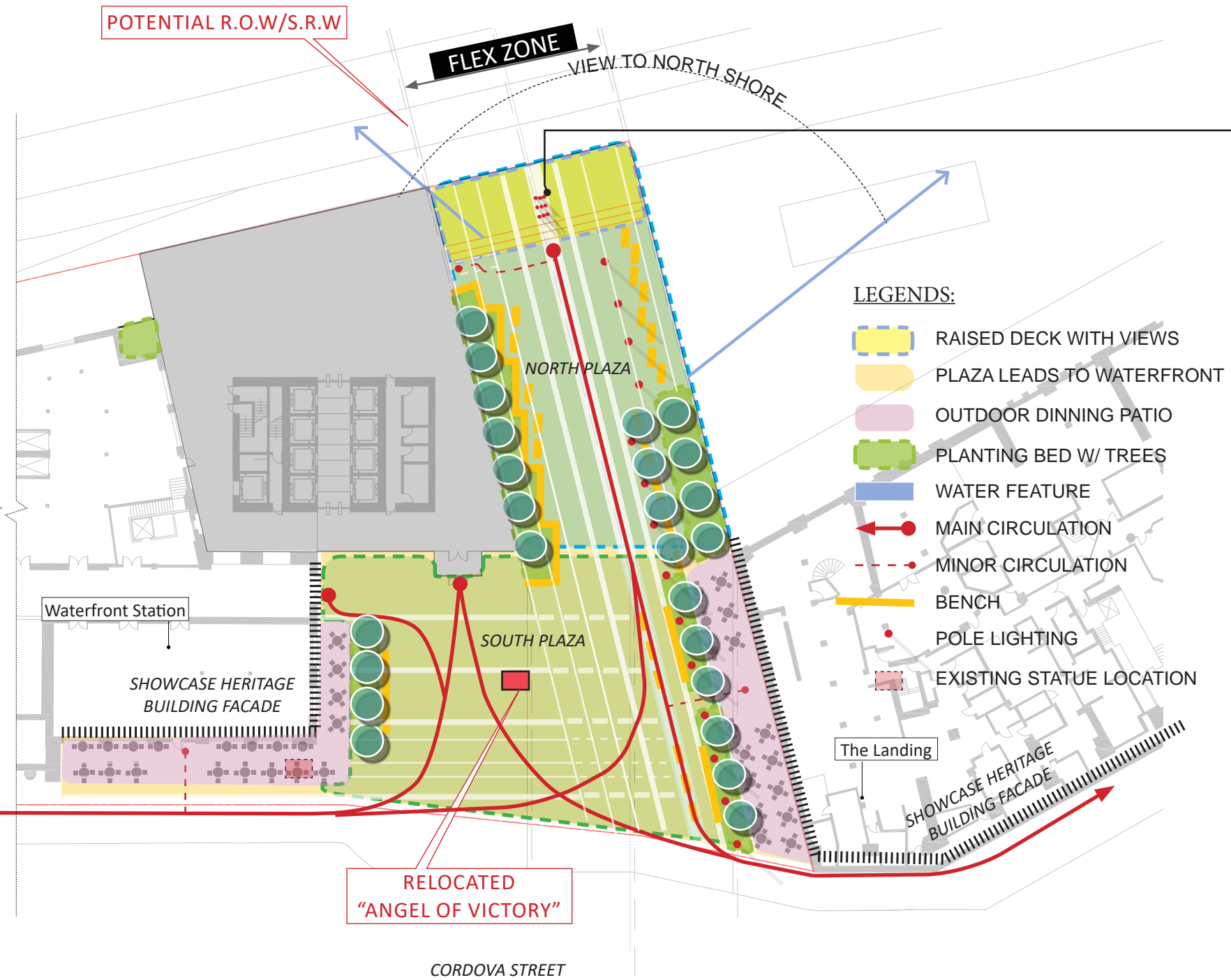
Secondly, it is an essential public viewpoint in this region of the city. It offers unparalleled vistas of the North Shore, Burrard Inlet, and the majestic mountains.

Furthermore, the space is designed to accommodate potential public programming, temporary art installations, events, and communal gatherings. This fosters a dynamic environment for diverse public engagements. Beyond these events, it also functions as an everyday space. It provides congregation areas, ample seating, outdoor dining facilities, and breathtaking views of the surrounding water and mountains.

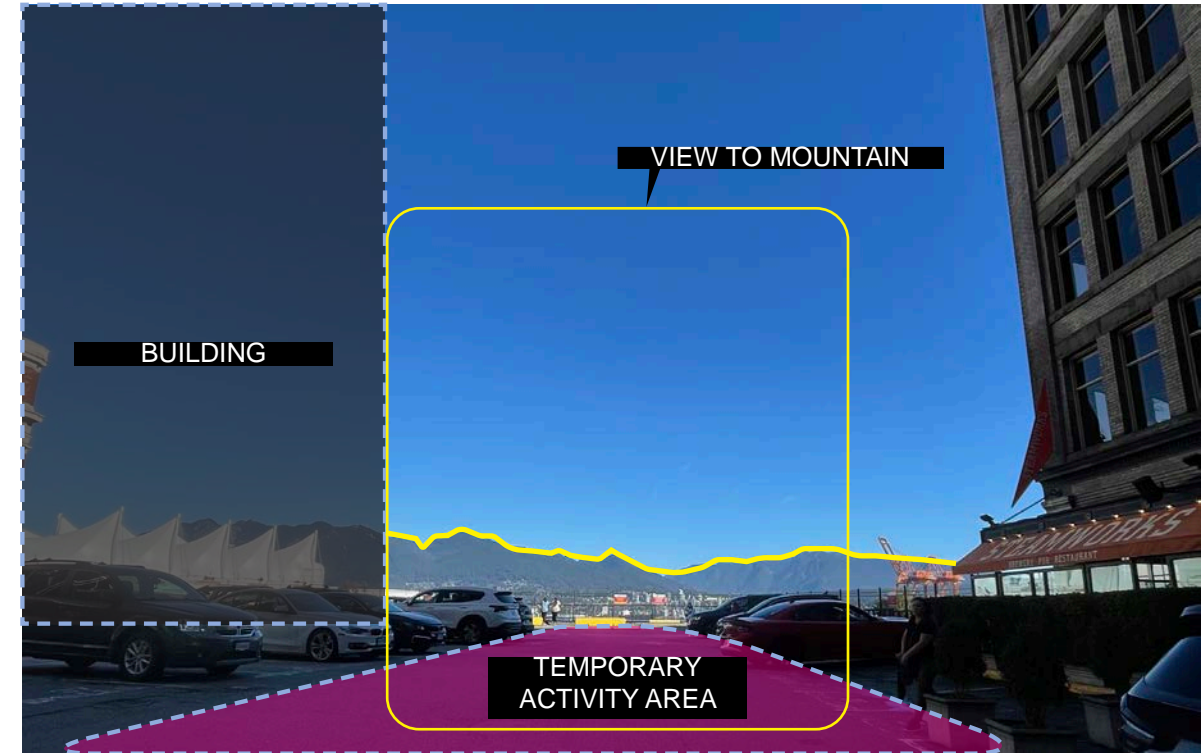
Moreover, it is envisioned as a platform for storytelling, intended to share narratives that honor the history and the rich traditions of the Coast Salish cultures, weaving these tales into the fabric of the space itself.



In essence, this design endeavor serves as a versatile and engaging platform that not only caters to immediate practical needs. It also embraces the heritage and narratives integral to the locale's collective identity.



04 Space Framework - Temporary Programs



• STREET PERFORMANCE



• SEASONAL MARKET

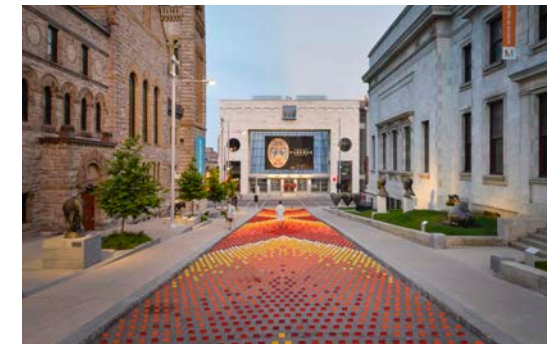
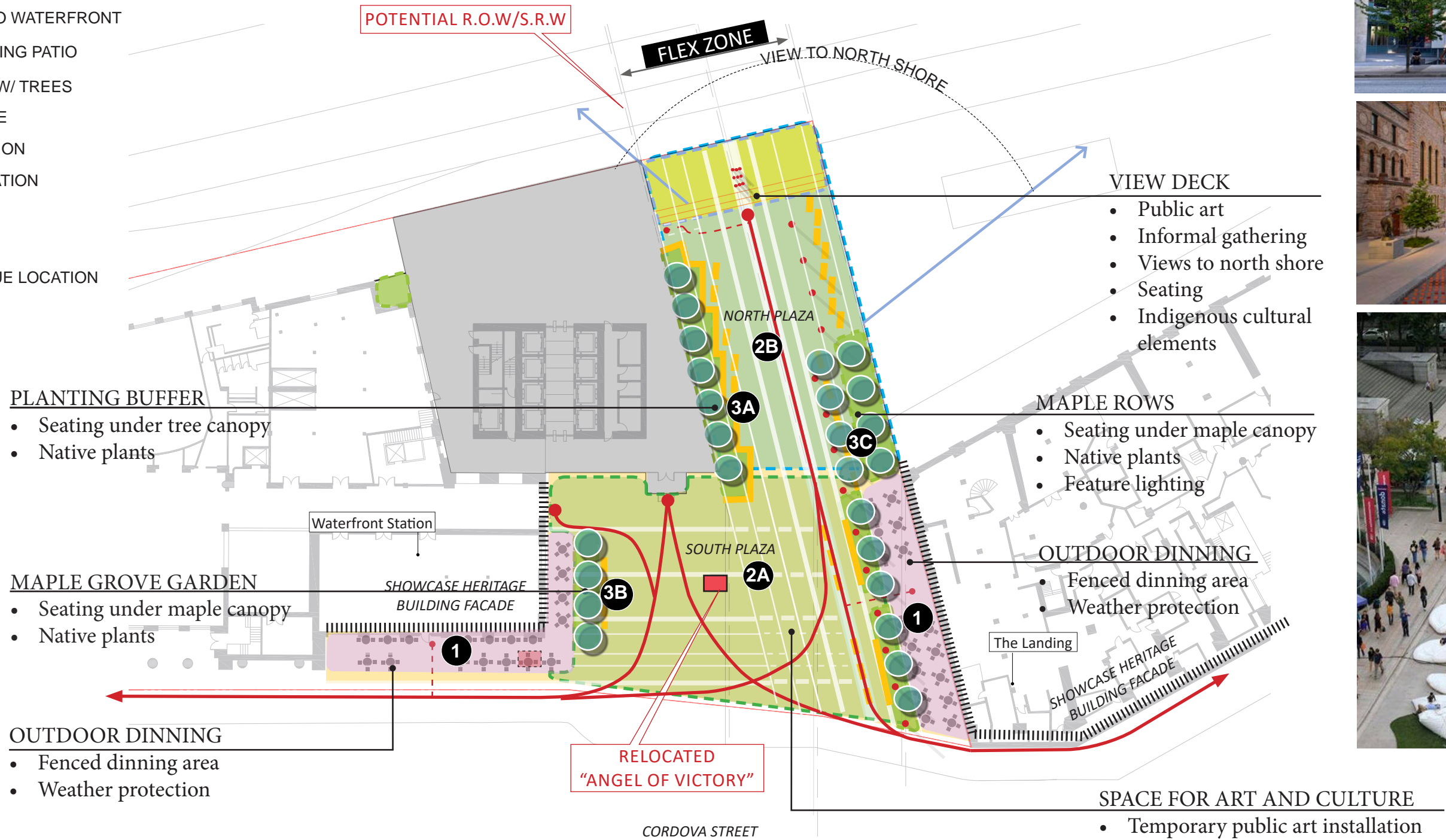


• EVENTS DAY

04 Space Framework - Temporary Programs

LEGENDS:

-  RAISED DECK WITH VIEWS
-  PLAZA LEADS TO WATERFRONT
-  OUTDOOR DINNING PATIO
-  PLANTING BED W/ TREES
-  WATER FEATURE
-  MAIN CIRCULATION
-  MINOR CIRCULATION
-  BENCH
-  POLE LIGHTING
-  EXISTING STATUE LOCATION



04 Space Framework - Perspective



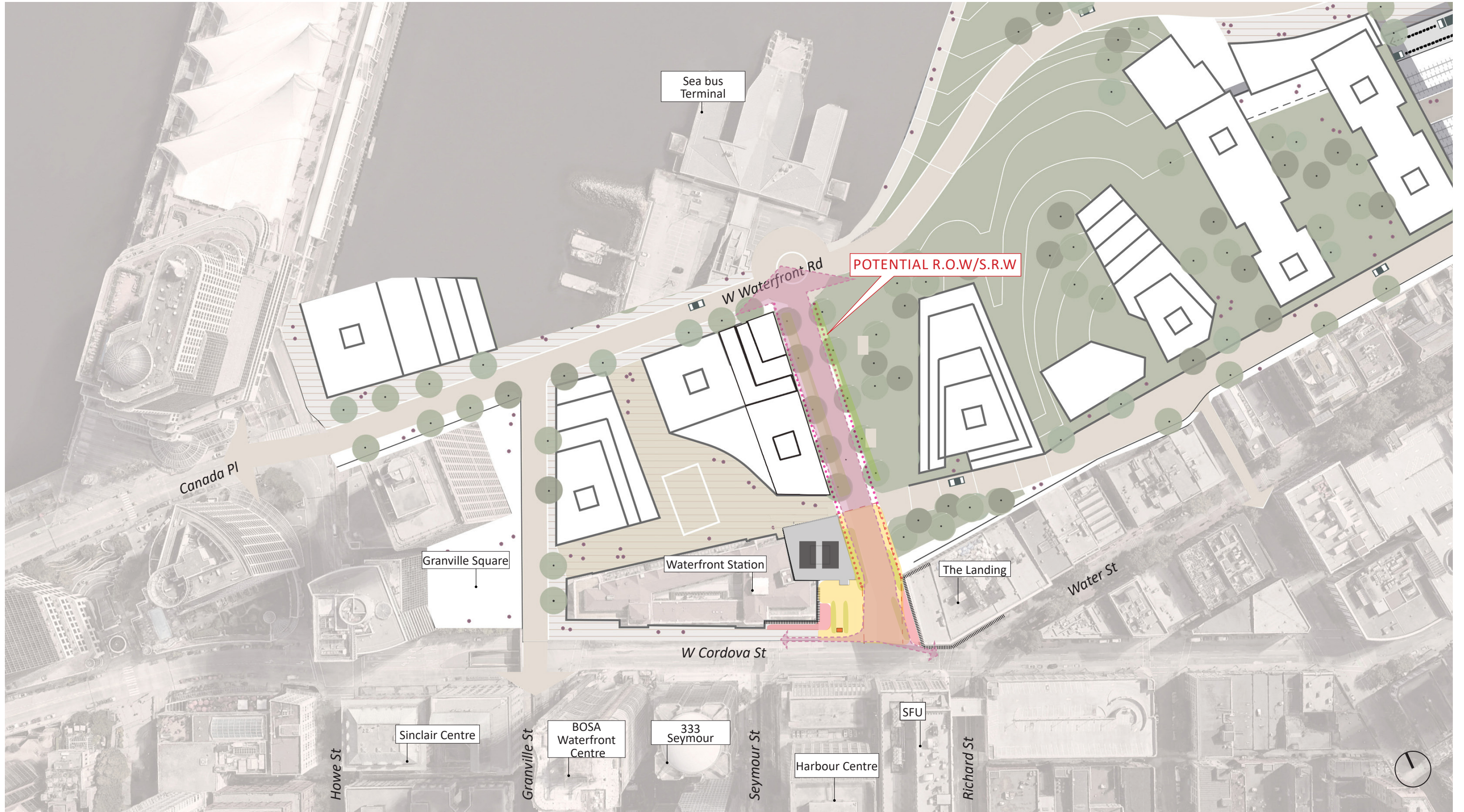
04 Space Framework - Perspective



04 Space Framework - Perspective



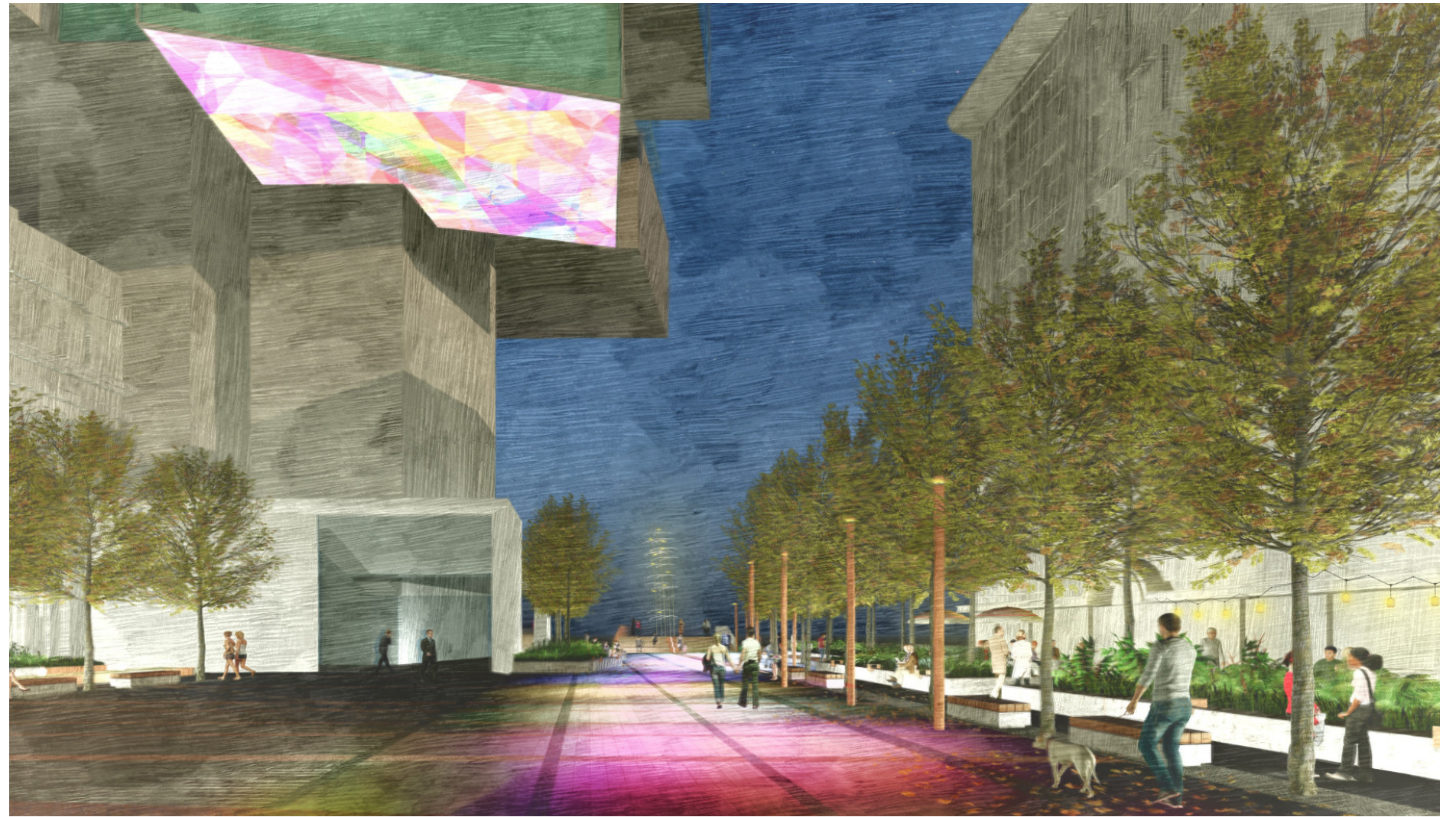
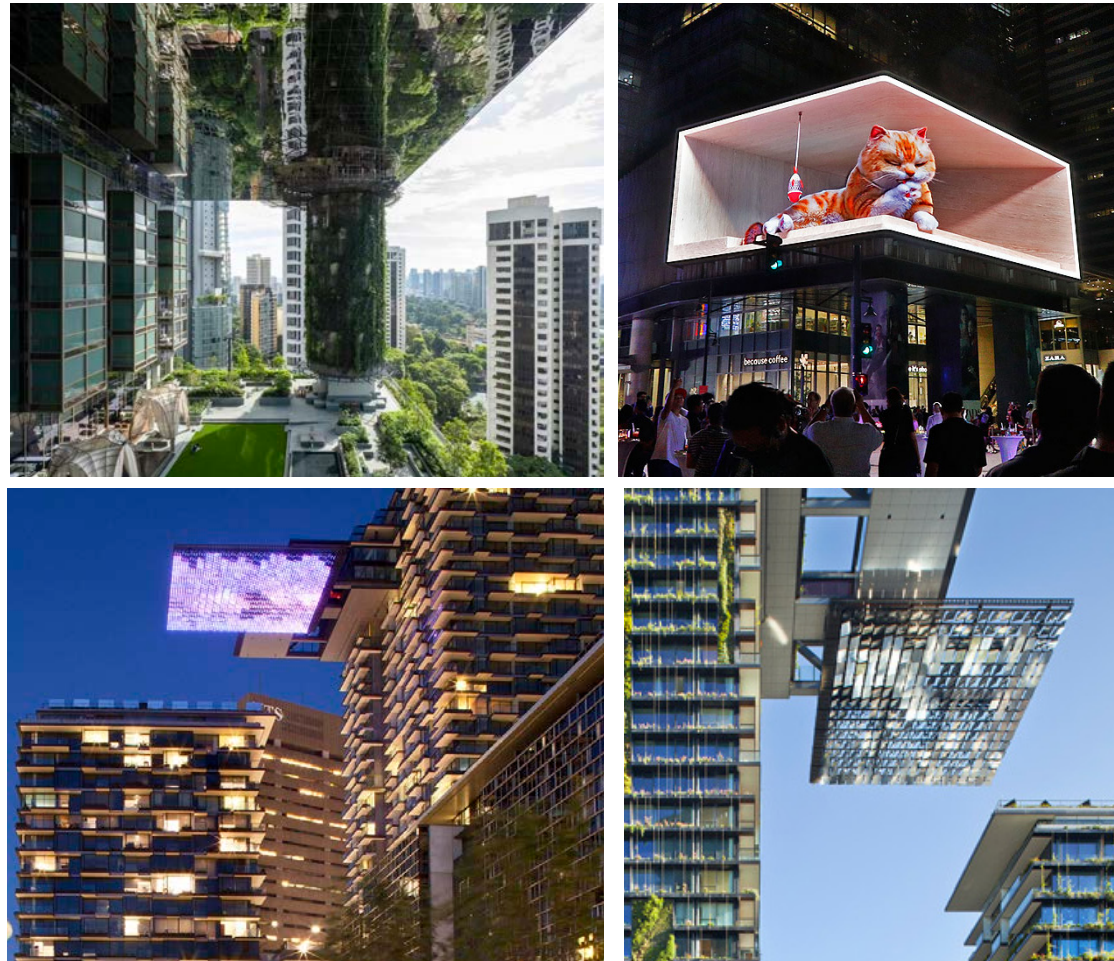
04 Space Framework - Central Waterfront Charrette Plan



04 Space Framework - Interactive landscape



04 Space Framework - Lighting on a plaza night



05 Indigenous Inspiration

5 KELLY CANNELL GLASS CANOPY ART



UBC GAGE RESIDENCE, KELLY CANNELL, BC



KELLY CANNELL



WEAVER, DEBRA SPARROW, BC

05 Indigenous Inspiration

WEAVE PATTERN PAVING

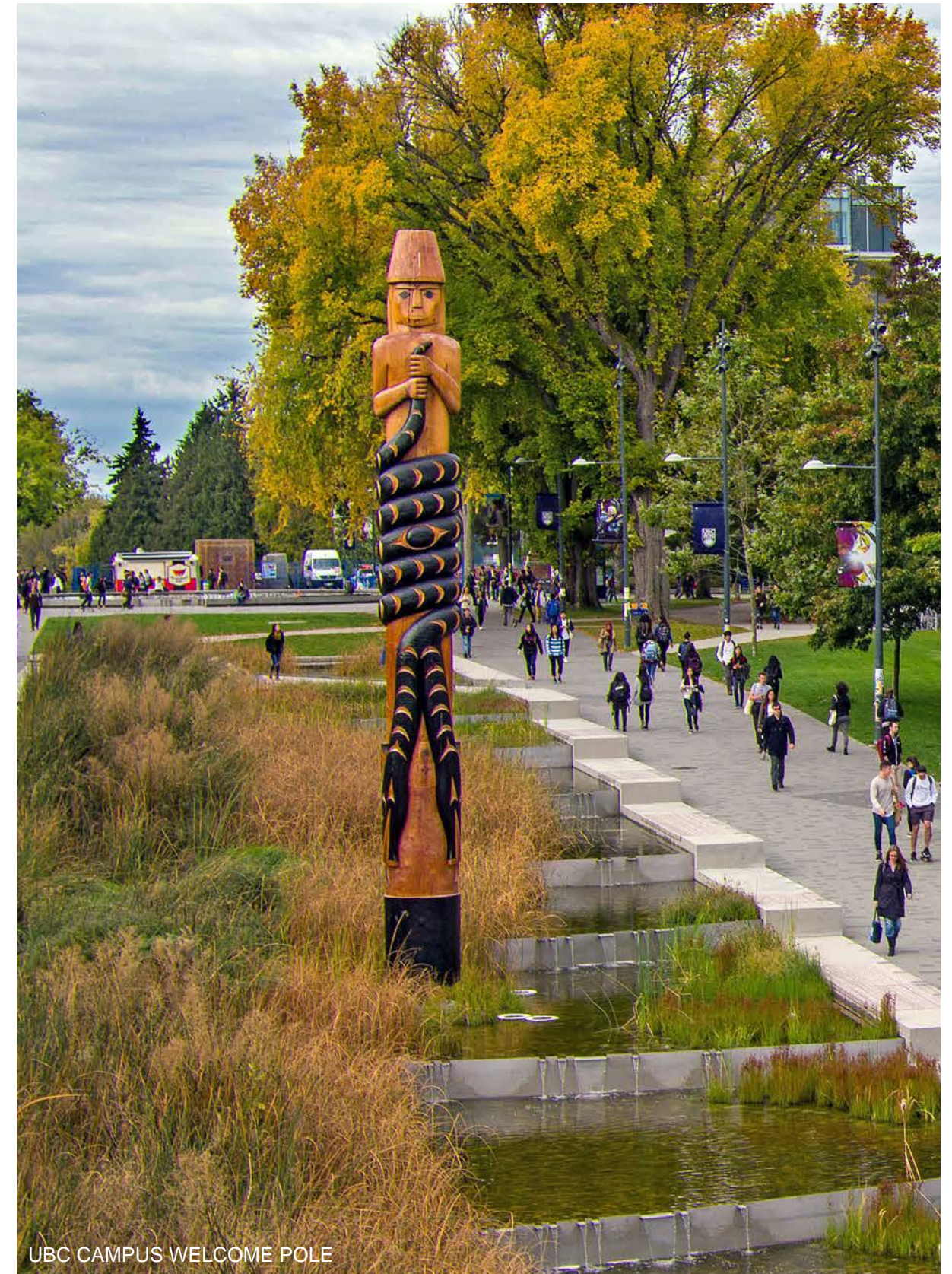


TRADITIONAL WOVEN BASKETS



PAVING PATTERN

05 Indigenous Inspiration



UBC CAMPUS WELCOME POLE

06 Native Planting

