

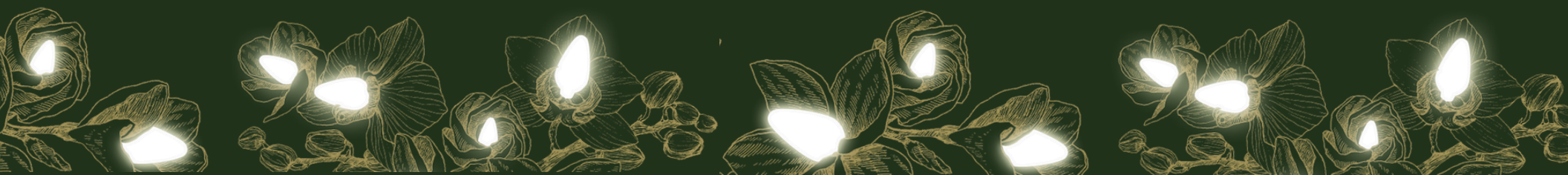


FESTIVAL OF LIGHTS

VANDUSEN BOTANICAL GARDEN



SENSORY-FRIENDLY NIGHT GUIDE



1. Getting to VanDusen Botanical Garden

VanDusen Botanical Garden is located at 5251 Oak Street. You can get to VanDusen by transit/bus, walking, or by car. If you are arriving by car, there is an accessible drop-off loop off Oak Street. The parking lot is located off of W 37th Ave at Oak, and some street parking is also available in the surrounding neighbourhood.

VanDusen is located on the #17 Oak bus route, or is a 15-minute walk from the Oakridge Canada Line Station. The area surrounding this Canada Line station is currently under renovations, resulting in sidewalk closures.



- 1 Accessible drop off loop on Oak Street**
- 2 #17 Bus stop (southbound), across the street is the northbound stop.**
- 3 Entrance to VanDusen Parking Lot**
- 4 VanDusen parking Lot**
- 5 Entrance to Festival of Lights/ VanDusen Visitor Centre**

2. Arriving at Festival of Lights

Once you park your car or arrive by foot or bus, from the parking lot, you will see a large tree covered in holiday lights in front of Shaughnessy Restaurant. Past that, follow the bridge that leads towards the front entrance. If you are dropped off at the accessible loop on Oak, you will be right at the front entrance of VanDusen, but will be asked to get in line with your tickets ready. It may be busy and there may be crowds of people lining up. Stay close together with your group.

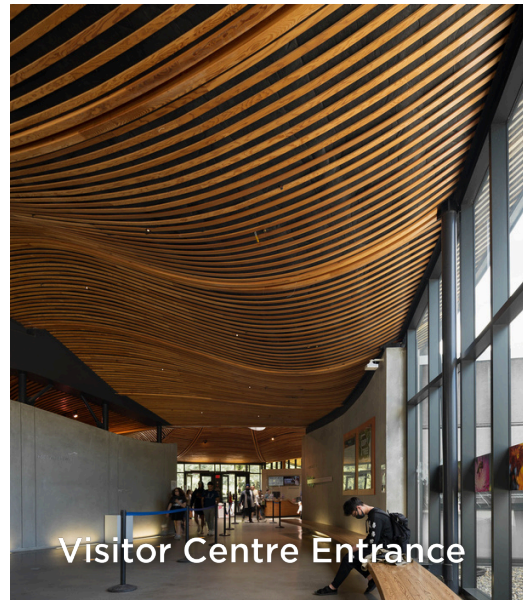
Please make sure you have purchased your tickets online in advance for a designated entry time. Your ticket can be presented on a mobile device, through your digital wallet, or printed out.



3. Getting inside + ticket scanning

VanDusen staff will scan your ticket just before the first set of doors. Once your ticket is scanned, you will head into the main Visitor Centre that leads to a second set of doors to enter the garden (outside). This area can often be busy with people standing around, and may be noisy from people talking.

If you need a space to take a break, you can enter the halls (Glacial Passage on map). This building has the only full-service washroom at the event. It is recommended that you use the full-service washroom before going outside. Washrooms are located down the right hallway, past the ATM. This building is also the exit for the show.



4. Identifying VanDusen Staff

If you need assistance during your visit, are lost, or have any questions, please ask a staff member. VanDusen staff wear high-vis vests or branded green Festival of Lights jackets that say “STAFF” on the back. Security guards are also on site and can radio staff members if you need help.

If you get lost, VanDusen staff members will stay with you and assist you in finding the rest of your group. Stay calm, VanDusen staff members are trained in situations with lost children or adults and will ask you for information needed to support staff in locating those lost.



5. Festival of Lights Map



LEGEND

	Entrance Line		Accessible Washroom
	Exit Path		First Aid
	Highlights		Festival Path
	Food		

HIGHLIGHTS

- 1 Glacial Passage (Great Hall)
- 2 Dancing Lights
- 3 Santa's Castle
- 4 Grotto-A-Glow
- 5 Scottish Shelter
- 6 Joy
- 7 Laburnum Lane
- 8 Roses Are...
- 9 Fireside Lounge
- 10 Merry Mistletoe
- 11 Tree Blush
- 12 Lavender Lite Tunnel
- 13 Wisteria Court
- 14 Garry Oak Glow
- 15 Fire & Ice
- 16 Globe
- 17 Tree Hugs
- 18 Owl's Hollow
- 19 Prismagic Maples
- 20 Salmon Run
- 21 Wood Wide Web
- 22 Pine Tree Woods
- 23 Great Bear Rainforest Exhibit

FOOD

- 1 Coco Molinillo
- 2 The Garden Cafe
- 3 Cocoa Chateau
- 4 Shaughnessy Wine Patio
- 5 Fireside Fondue
- 6 Mr. Arancino
- 7 Japadog
- 8 Ay!Mamacita
- 9 Chai Wagon
- 10 Cin City Donuts
- 11 Triple O's (select nights)

6. Glacial Passage (Highlight #1) Indoors

The Visitor Centre halls/#1 - Glacial Passage is the biggest indoor space to rest. Cocoa Molinillo will be located in this space serving hot chocolate and pastries. This is a good spot to take a break before heading outside where the majority of the event footprint takes place. There will be some chairs in the halls, but it is mostly standing space.

There will be a display of illuminated animals at the back wall. Please don't touch the display.



7. Going into the Garden

When you first exit the Visitor Centre doors you will walk onto the Plaza where there may be some crowding. There will be a large map of the show. You will see the Dancing Lights display on the water (highlight #2). The flashing lights have been turned off on the Dancing Lights display for the sensory night. Three music sets will play at a lowered volume level every 20 minutes from the top of the hour. All lights will be on, but static.

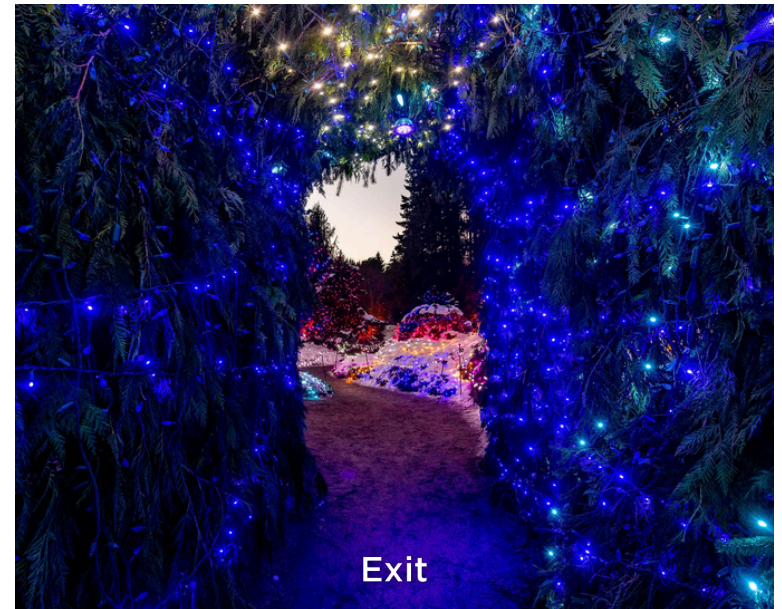
If you want to follow the show in its intended order, go left to see #3 - Santa's Castle, then over the small bridge. You will see the lakeside pathway. Be careful and do not walk too close to the edge. The pathway will be lit up and will lead to #4 - Grotto-A-Glow. Please keep to the designated event pathways lined by lights.



8. Grotto-A-Glow (Highlight # 4)

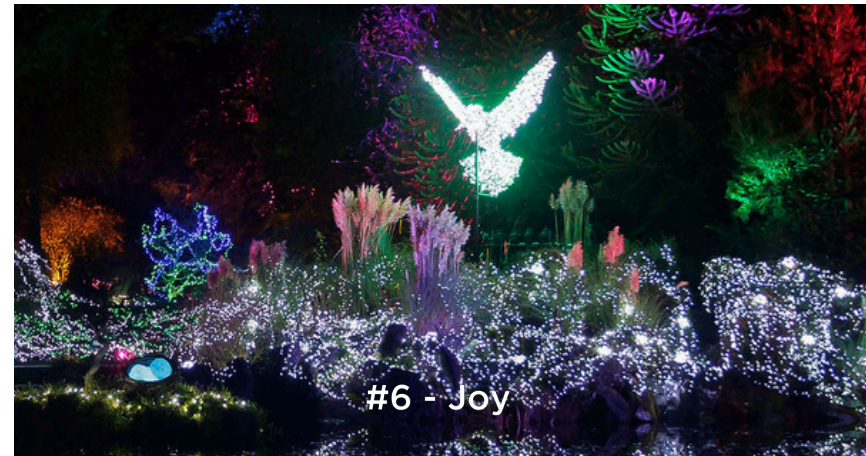
When you come to the end of the lakeside pathway, you will arrive at the entrance to highlight #4, Grotto-A-Glow. You may experience a wait to enter the tunnel, and there may be some crowding. If this tunnel feels overwhelming, you can turn left and take the pathway towards highlight #8 - the Roses Are... display. You can still view highlights #5 - #7 after without having to walk through Grotto-A-Glow.

Should you continue your way through Grotto-A-Glow, this narrow tunnel is covered in lights. The tunnel won't take long to talk through, unless waiting behind others. When you exit the tunnel, you will turn left towards Highlight #5.



9. Highlights #5 to #8

After exiting Grotto-A-Glow, you will head toward highlights #5 to #8. If you want to donate to Make-A-Wish, you can light a candle. Be careful of the candle flame. Once you pass highlight #6, turn left. The event pathway will eventually wrap back to this spot.



10. Highlights #9 to #11 + Rest stop

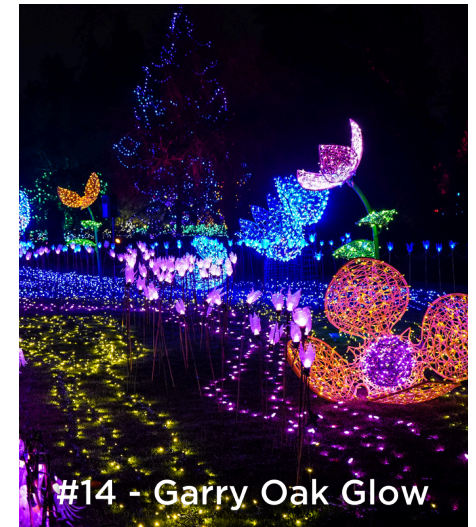
Across from #8 - Roses Are, there will be a tent with heaters, fire pits, and some chairs (#9 Fireside Lounge). This is a great spot to stop and take a break and warm up. Be careful around the open firepits and don't get too close to the flames. If you are hungry, Fireside Fondue and Shaughnessy's Patio are located in this area. Shaughnessy's Patio also has heated seating. More food vendors are nearby.



11. Highlights #12 to #14 + Food Vendors

When you are ready to leave the Fireside Lounge, you will follow the pathway on the left side of the Rose Garden. This will lead to #12, Lavender Lite Tunnel, a pathway with an arch of lights. There may be a lineup of people waiting to go through the tunnel, and people may stop within the tunnel to take photos.

At the end of the tunnel, you will see #13 Wisteria Court, and #14 Garry Oak Glow, where more food vendors are located. This area may become noisy and congested as people wait for food. There are chairs and tables in this space to sit at and rest.



12. Highlights #15 to #17

After leaving Wisteria Court, you will follow one pathway. On route, you will pass by #6 Joy (again), and highlights #15 to #17.



13. Highlights #18 to #19 & Mini Donuts

You will see a rainbow of trees when you reach #19 - Prismatic Maples. Across from the maples, you will spot #18 Owl's Hollow and Cin City Donuts. Keep following the pathway and it will lead you to the the final highlights of the event. #20 Wood Wide Web and #21 Salmon Run are new displays! When you stop by #20, please make sure you do not stomp or jump on the platform. At this point, you will almost be done the entire event loop, and will make your way towards the Visitor Centre/exit.



14. Visitor Centre/ Exit

Once you have reached the end of the highlights, you will end up back on the Plaza where you started. To exit, you will need to go back inside the Visitor Centre and out the same set of doors you came in through.

Once you are outdoors again, you will walk up the bridge back towards the parking lot, or your group can pick you up from the accessible C-drive off Oak Street.



15. Food Vendors

There are 10 food vendors at Festival of Lights. See details and locations below. Most food vendors have vegetarian options available, some have vegan options.

VISITOR CENTRE/PLAZA:

- Coco Molinillo - Hot chocolate, coffee & tea, pastries
- The Garden Cafe - Sandwiches, soups, salads, pastries, hot + cold beverages (licensed)
- Cocoa Chateau - hot chocolate, apple cider, popcorn, cookies, candy apples
- Triple O's (5pm - 9pm on Dec 3) - burgers, fries, drinks

FIRESIDE FONDUE + SHAUGHNESSY WINE PATIO (*licensed*)

- Fireside Fondue - Chocolate fondue, hot chocolate, apple cider, Biscoff cookie hot chocolate
- Shaughnessy Wine Patio - mulled wine, Bailey's hot chocolate or coffee, hot chocolate, pretzels, hot dogs, chowder, Jamaican Patties, cookies, kettle corn

Food Vendors Cont.

WISTERIA COURT

- Mr. Arancino - Risotto balls (Meat, Vegan, Vegetarian - all Gluten Free), french onion soup, vegan hot chocolate
- Japadog - Japanese style hot dogs, beverages (veg options)
- Ay! Mamacita - tacos, quesadillas, nachos, churros, hot chocolate (vegan available), Mexican Fruit Ponche, Spicy Hot Chocolate, other beverages
- Chai Wagon - Ginger chai (vegan available), samosas, patties

CIN CITY DONUTS - by highlight #19

- Cin City Donuts - Fresh mini donuts (bag or bucket), hot chocolate, apple cider, coffee/tea

