

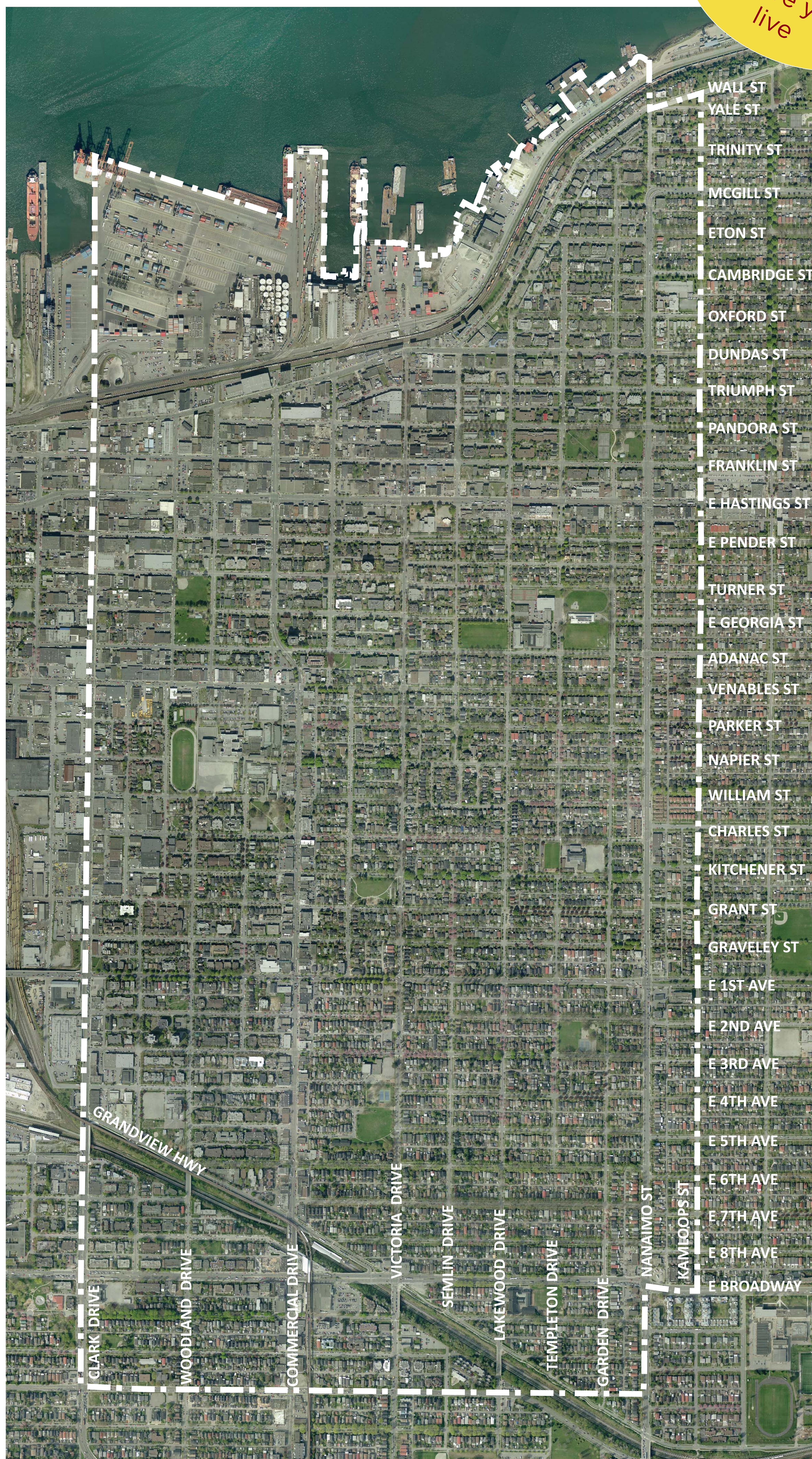
Welcome!

GRANDVIEW- WOODLAND

1

Open House June 2013
GRANDVIEW-WOODLAND COMMUNITY PLAN

Place a dot
where you
live



The new Grandview-Woodland Community Plan sets out a course for the long-term growth and development of one of East Vancouver's most popular and vibrant neighbourhoods.

Over the past year, we've been gathering your ideas on the future of the neighbourhood. We're here to present you the draft directions for the Grandview-Woodland Community Plan.

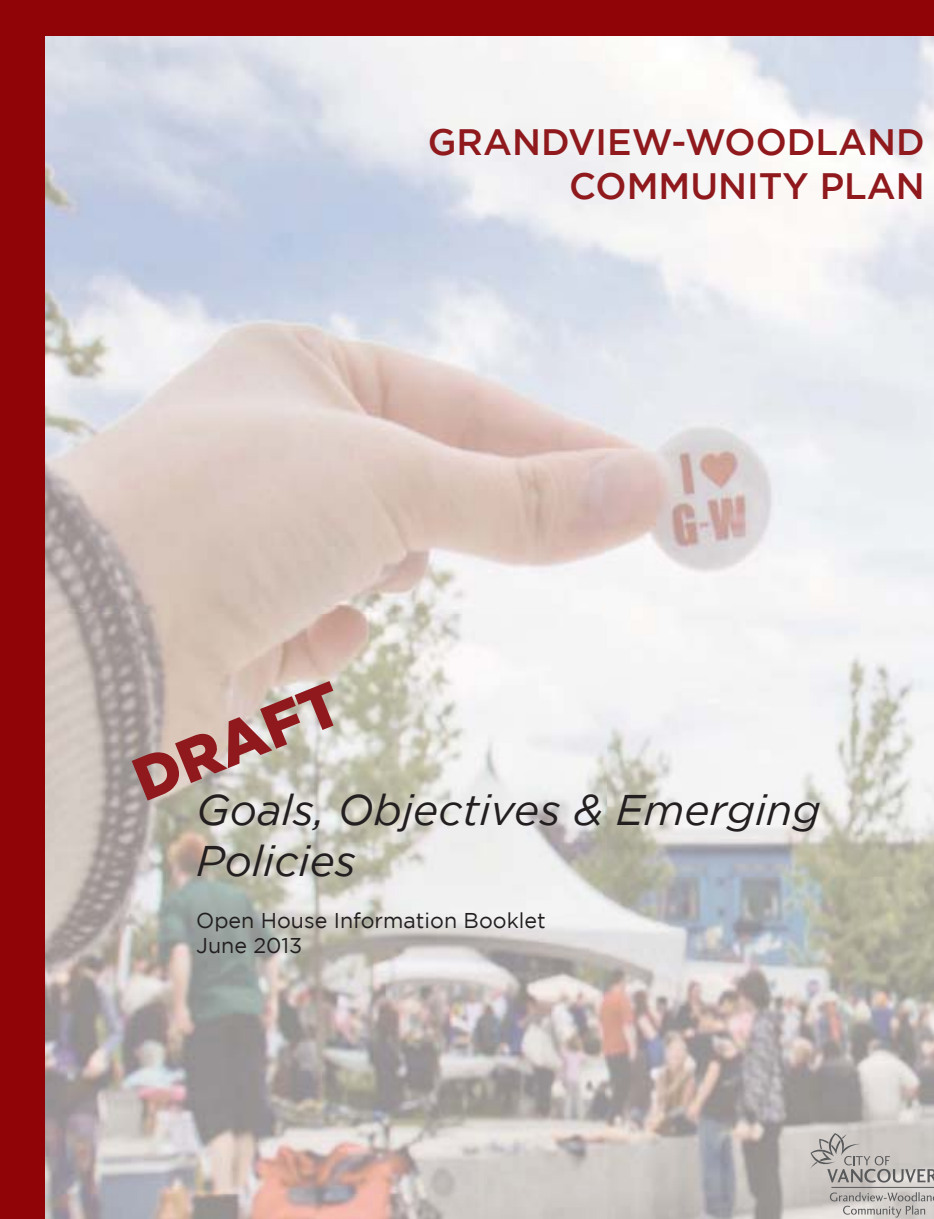
Let us know what you think!

1. Read the Boards!

2. Take a Booklet!

3. Have your Say!

Please refer to the BOARDS for an overview of key Goals and Objectives.



Take a BOOKLET to delve into a more detailed outline of the **Community-wide Policy and Sub-Area Policy Directions.**

Feel free to ask staff questions & share your thoughts with us.