



Contents

1. The Community Panel's Work
2. Panel Composition
3. Learning Program
4. Get involved

The Flats Arterial
COMMUNITY PANEL

Team Behind the Community Panel

The **Jefferson Center** is one of the foremost practitioners of deliberative democracy worldwide. Project staff have designed, facilitated, or otherwise supported more than thirty deliberative projects for municipal, state, and federal government, private businesses, and others in the United States, United Kingdom, and Australia in the past 5 years.

Our team is based in Vancouver and the United States. Susanna Haas Lyons will serve as Panel Chair.

The Flats Arterial
COMMUNITY PANEL

The Panel's Work

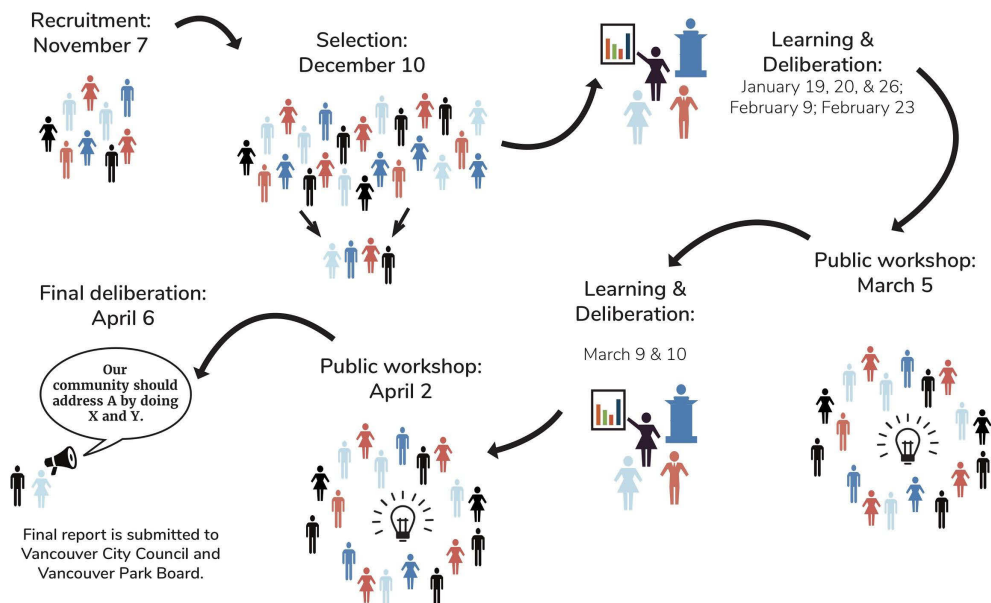
The Flats Arterial
COMMUNITY PANEL

About the Flats Arterial Community Panel

- Randomly selected and demographically diverse group of residents and businesses
- Meet regularly over four months
- Learn from experts and stakeholders, deliberate, hear from the public
- Work together to make a recommendation to Council and Park Board



Flats Arterial Community Panel Process



Community Panels BC

Other provinces

Australia

Ireland

USA

Province wide electoral reform, Grandview-Woodland neighbourhood plan, provincial digital services, municipal amalgamation

Electoral reform, climate change and energy, Pharmacare, winter roads, mental health, municipal budgets, organ donation, bid for Commonwealth Games

Safe nightlife, energy generation, infrastructure planning, obesity, budgeting

Abortion, fixed term parliaments, referendums, population ageing, climate change

Medical privacy, health care policy, evaluate state referendums

And many more in countries including Brazil, Canada, Ireland, Italy, New Zealand, UK

The Flats Arterial Community Panel Mandate

The Flats Arterial Community Panel tasks a diverse group of residents and business participants with providing a recommendation and rationale for the preferred alignment of an arterial route in False Creek Flats. The panel will:

- Develop a set of criteria to guide the evaluation and selection of a preferred grade-separated east/west arterial road alignment.
- Recommend a route for the arterial road, with rationale for the recommendation and suggestions for mitigating any remaining concerns.

The Flats Arterial
COMMUNITY PANEL

What will the Community Panel do?

Consider background information about the False Creek Flats area, the local economic context, & the need for a grade-separated arterial.

Establish values-based criteria to support consistent evaluations across each proposed arterial route.

Consider information from stakeholders, City staff, residents, and others regarding both technical information about and the effects of each proposed arterial route.

Produce assessments of each proposed arterial alignment identifying benefits and drawbacks, with reasons for each.

Get feedback on their work from the broader community.

Recommend a preferred arterial route.

Panel Composition

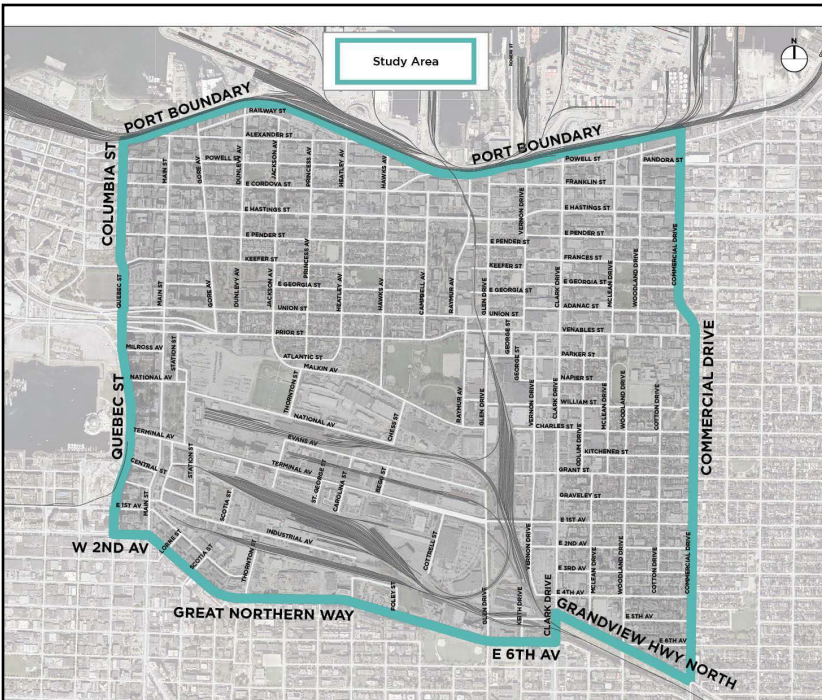
The Flats Arterial
COMMUNITY PANEL

Composition of the Panel

The **42 Panel members** will include both residents and participants from local businesses

- **21 local residents** from within the study area
- **6 city-wide residents**
- **15 participants from local businesses**

The Flats Arterial
COMMUNITY PANEL



Study Area Boundaries

North: Port boundary

South: Great Northern Way
/ North Grandview Highway

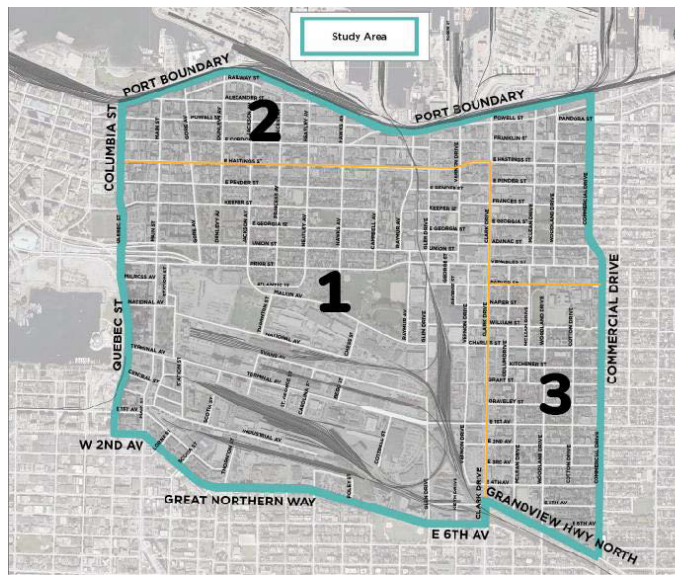
East: Commercial Street

West: Quebec Street /
Columbia Street

The Flats Arterial
COMMUNITY PANEL

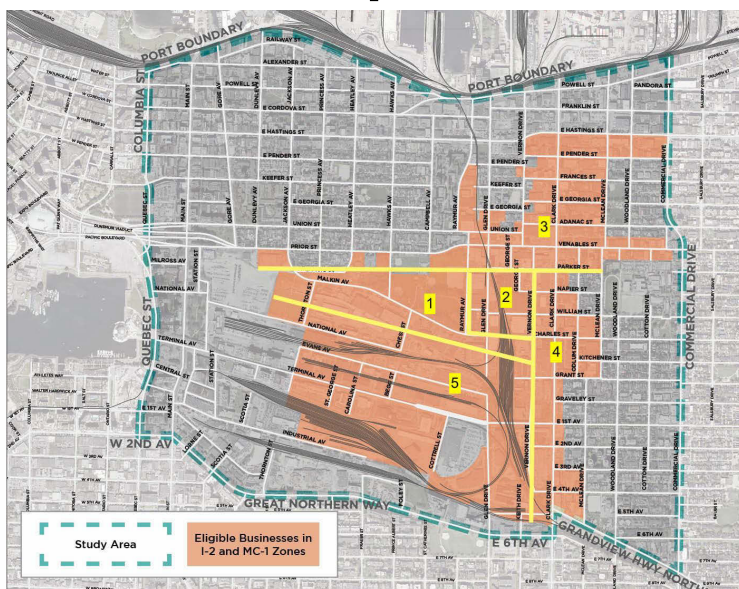
21 Local Residents

- **Gender:** A demographically proportionate number of individuals who identify as men, women, and trans*/non-binary
- **Age:** A demographically proportionate number of members from five age cohorts: 16-29 years, 30-44 years, 45-64 years, 65+ years
- **Ethnicity** A demographically proportionate number of “visible minority” individuals,
- **Indigenous:** At least 2 members who self-identify as Indigenous
- Resident **location** / geographic mix:
 - Area 1: 12-13 Panelists
 - Area 2: 4 Panelists
 - Area 3: 4-5 Panelists



15 Local Business Participants

- Mix of **location**, with an approximate 2:1 ratio of businesses in areas zoned I-2, MC-1, or along a proposed arterial route, to those located in other zoning districts and/or in other parts of the study area
- Mix of business **size** according to number of employees
- Mix of business **types**, 2 per category
- As possible, composed of a mix of **genders and ages**



6 City-Wide Residents

- Each from a different neighbourhood, composed of a mix of genders and ages



Support for Participation

- Meals at each meeting
- Travel, childcare, and eldercare reimbursement
- Other needs-based support, including low-income supplement, translation into Mandarin and Cantonese, and learning supports

The Flats Arterial
COMMUNITY PANEL

Panel Recruitment Is Open!

- Postcards sent out to 12,000+ households in Vancouver, with emphasis on study area
- Digital advertising and social media promotion via City of Vancouver platforms
- Posters in community locations
- Interviews with local media
- Promotion via community and stakeholder networks
- Online, phone and paper applications



The Flats Arterial
COMMUNITY PANEL

You are invited to apply to a Community Panel!

Who can apply?

Vancouver residents and Flats-area businesses are eligible to apply.

To serve on the Panel **you must be able to attend** each of the following full day sessions: January 19, 20 & 26; February 9 & 23; March 9 & 10; April 6.

溫哥華居民和平地企業的員工都有資格申請。成為幹線小組的成員，您必須能夠參加以下整天的會議：

1月19日及20日；1月26；
2月2日及16日；3月2日
及9日；4月6日。

How do I apply?

Apply online at fcfcommunitypanel.com/apply or call 778-381-9121 or find a paper application at a community center in the Strathcona neighbourhood. You will be asked to share basic information about yourself to help us involve a diverse group of people.

How are panelists selected?

From those who apply, 42 panelists will be randomly selected to ensure a diverse group of residents and businesses.

What support exists so that I could participate?

Support for participation includes: meals at each meeting, reimbursement for travel, childcare, and eldercare expenses, and other needs-based support.

How can I participate if I'm not selected?

If you would like to contribute to the discussion but can't volunteer, please visit fcfcommunitypanel.com for information about community workshops and more.

Do I have to be an expert?

You don't have to be an expert to apply – a desire to help shape the future of False Creek Flats, a willingness to learn, and a collaborative attitude are the only requirements.

Who will use the Community Panel recommendation?

The Community Panel will provide its recommendation to Vancouver City Council and Vancouver Park Board and will significantly inform the selection of the arterial route.

Get in touch: fcfcommunitypanel.com / 778-381-9121 / hello@fcfcommunitypanel.com

Panel Member Selection

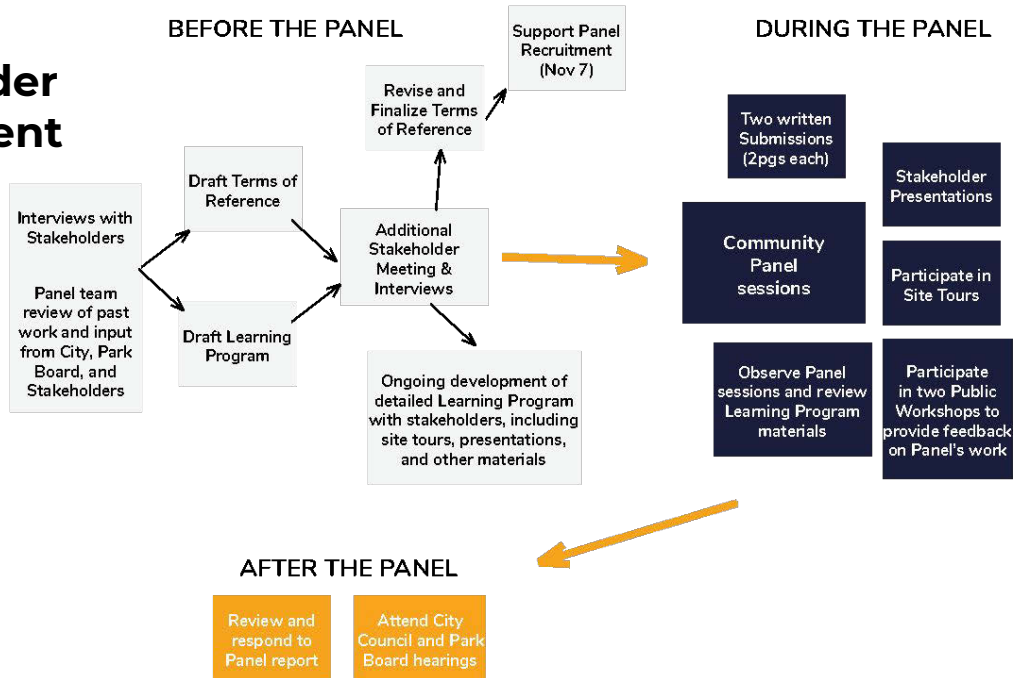
- Panelists will be **randomly selected** from the group of applicants
- **Blind, anonymous selection process** - using a computer program - to ensure the process is random, fair, and free from any potential bias
- Three pools of applicants: local residents, local business participants, city-wide residents

The Flats Arterial
COMMUNITY PANEL

Learning Program

The Flats Arterial
COMMUNITY PANEL

Stakeholder Involvement



Draft Learning Topics

- Overview of the decision
- Past, present and future of the Flats
- Basic overview of the Arterial route options
- Tour of study area
- Deep Dive into Key Factors
 - Transportation performance
 - Cost
 - Park network, recreation and community gardens
 - Business
 - Local residents
 - Civic and public facilities
- Additional questions and/or remaining factors

The Flats Arterial
COMMUNITY PANEL

4 Routes Under Consideration

4 routes, with variations:

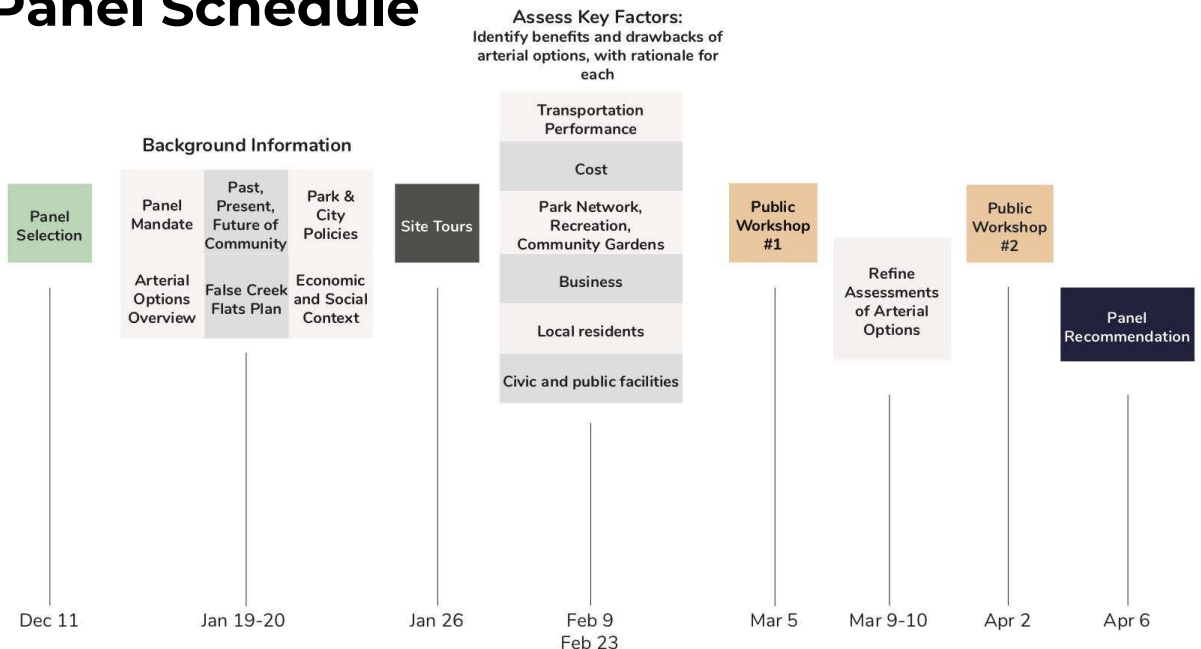
- National Avenue
- Malkin Street
- William Street
- Prior Street

These routes have been selected with the following in mind:

- Constructability
- network connectivity
- Providing a direct route between Main Street and Clark Drive
- Local area access

The Flats Arterial
COMMUNITY PANEL

Panel Schedule



Get Involved

The Flats Arterial
COMMUNITY PANEL

Get Involved

Prior to the Panel's Start

- Offer your perspectives to help inform a balanced and accurate learning program hello@fcfcommunitypanel.com
- Volunteer to apply
- Share opportunity to apply with eligible colleagues and neighbours

During the Panel

- Submit a written idea to the Panel
- Observe Panel sessions
- Participate in public workshops with Panel members
- Review learning materials
- Follow proceedings online and through e-newsletter

After

- Review Panel report
- Attend Council and/or Park Board hearing

The Flats Arterial
COMMUNITY PANEL



The Flats Arterial
COMMUNITY PANEL

WHAT'S THE BEST LOCATION FOR AN ARTERIAL STREET IN FALSE CREEK FLATS?

Apply to help answer this
question by December 10 at
fcfcommunitypanel.com/apply
or call 778-381-9121

Selected participants will work
together to recommend the route f
or the new street. More info:
fcfcommunitypanel.com

Contact Us

Susanna Haas Lyons, Panel Chair
susanna@fcfcommunitypanel.com / 778-806-8136

Kyle Bozentko, Project Principal
kyle@fcfcommunitypanel.com / 605-354-2358

Michelle Hoar, Panelist Liaison
michelle@fcfcommunitypanel.com / 778-381-9121

Andrew Rockway, Project Manager
arockway@jefferson-center.org / 224-392-1093

The Flats Arterial
COMMUNITY PANEL