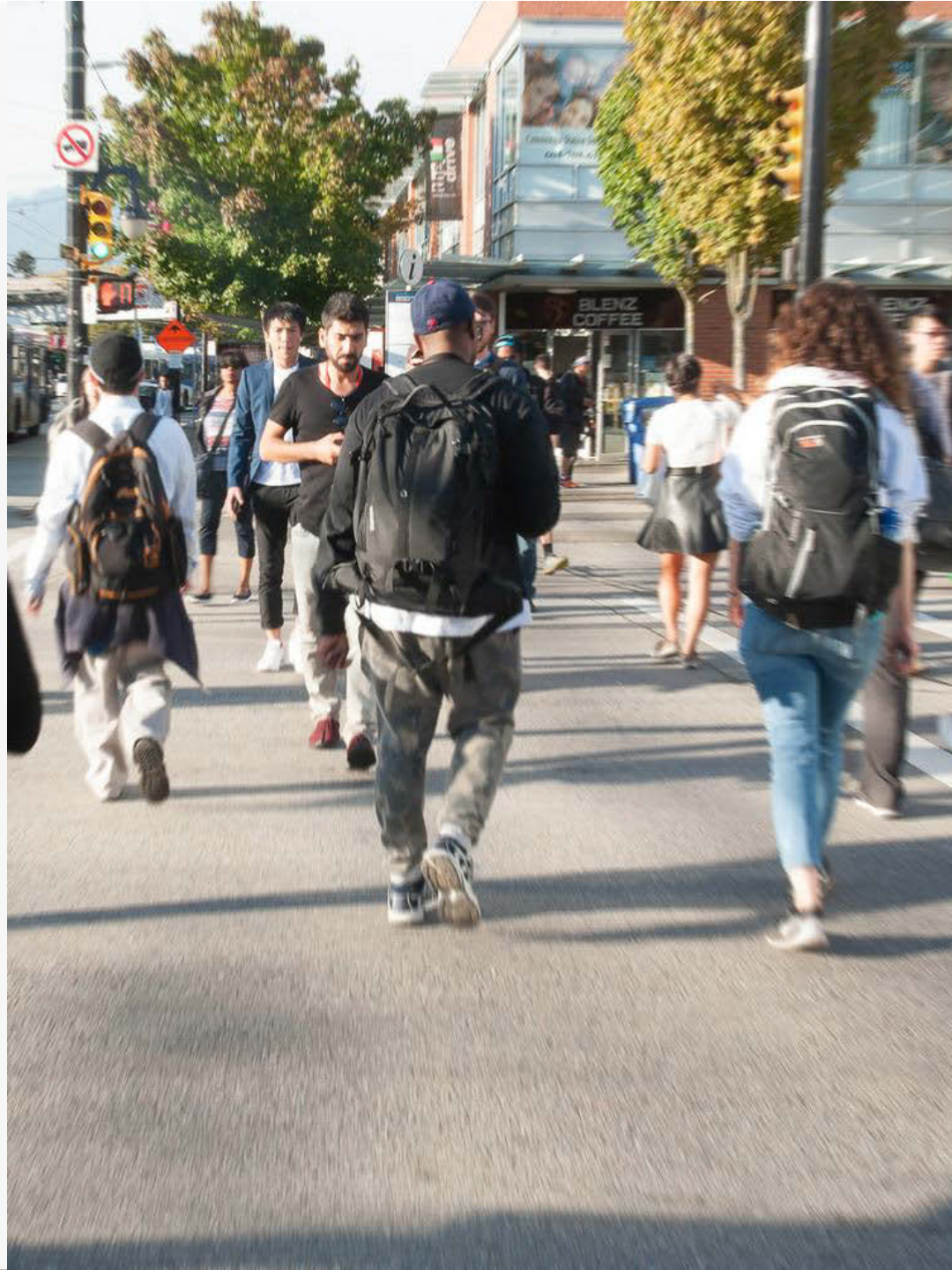


# Grandview- Woodland Neighbourhood Transportation & Parking

Stakeholder  
Advisory Group

Meeting # 6  
November 22, 2018



6:30 pm

Intros & Welcome

6:45 pm

Project Updates

- False Creek Flats Community Panel
- Nanaimo Street Upgrades
- Woodland and E 2<sup>nd</sup> Avenue
- Commercial Drive Complete Street
- 10<sup>th</sup> Avenue and Commercial Drive

7:45 pm

Break

7:55 pm

- Adanac Overpass
- Gastown Complete Street
- Eastside Crosscut Greenway
- Mobi Bike Share

8:30 pm

Closing & Thank You



A large mural on a corrugated metal wall. The top section shows a blue sky with white clouds and a window with bare tree branches. The middle section features a large orca breaching the water, with a semi-transparent white banner overlaid containing the text "Introductions & Member Updates". The bottom section shows a green frog on a rock, a small green frog on a rock, and a large stylized figure of a person in a green and blue outfit. The text "Introductions & Member Updates" is written in bold black font on the white banner.

# Introductions & Member Updates





The background image shows a community planning meeting in progress. A person's hand is visible, drawing a black outline on a large map of a city grid. The map includes street names such as Commissioner St, Wall St, Oxford St, Dundas St, Triumph St, Garden Drive, and Nanaimo. A red dashed line runs across the map. In the foreground, several Sharpie markers in various colors (yellow, black, red, blue, green) are scattered on the table. A white cup is also visible on the left side of the frame.

## Project Updates

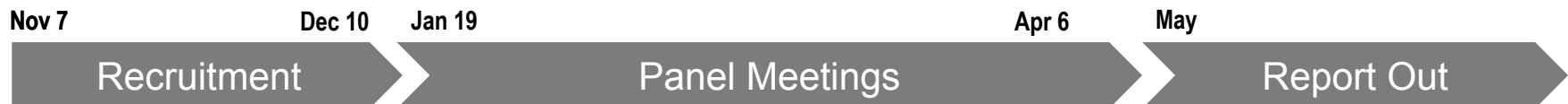
# False Creek Flats Community Panel

## What is it?

A Community Panel is a representative group of residents and businesses who are randomly-selected to learn, advise and recommend a solution on a complex or difficult community issue.



## Schedule



## How Does it Work?

### LEARNING PROGRAM



Panel facilitator works with the City and stakeholders to develop curriculum and provide information on a variety of perspectives that are important to selecting the route

### PANEL



42 residents and business members learn, discuss values and trade-offs, identify important considerations, and recommend a preferred route.

## Overview



1. Sewers



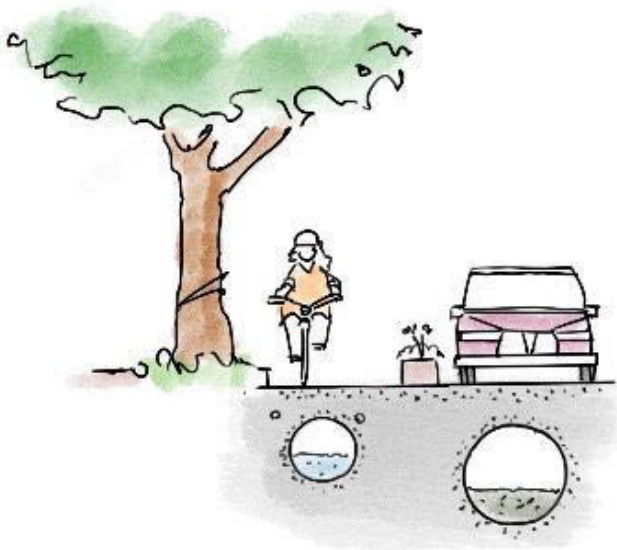
2. Construction



3. Potential  
Transportation  
Changes



# Nanaimo Street Upgrades



- Sewer mains in area at capacity
- Need to separate and expand rainwater runoff and sanitary sewer
- Part of B.C. and Metro Vancouver initiatives to eliminate sewage overflows
- New sewer will have 100-year life span for growing neighbourhood

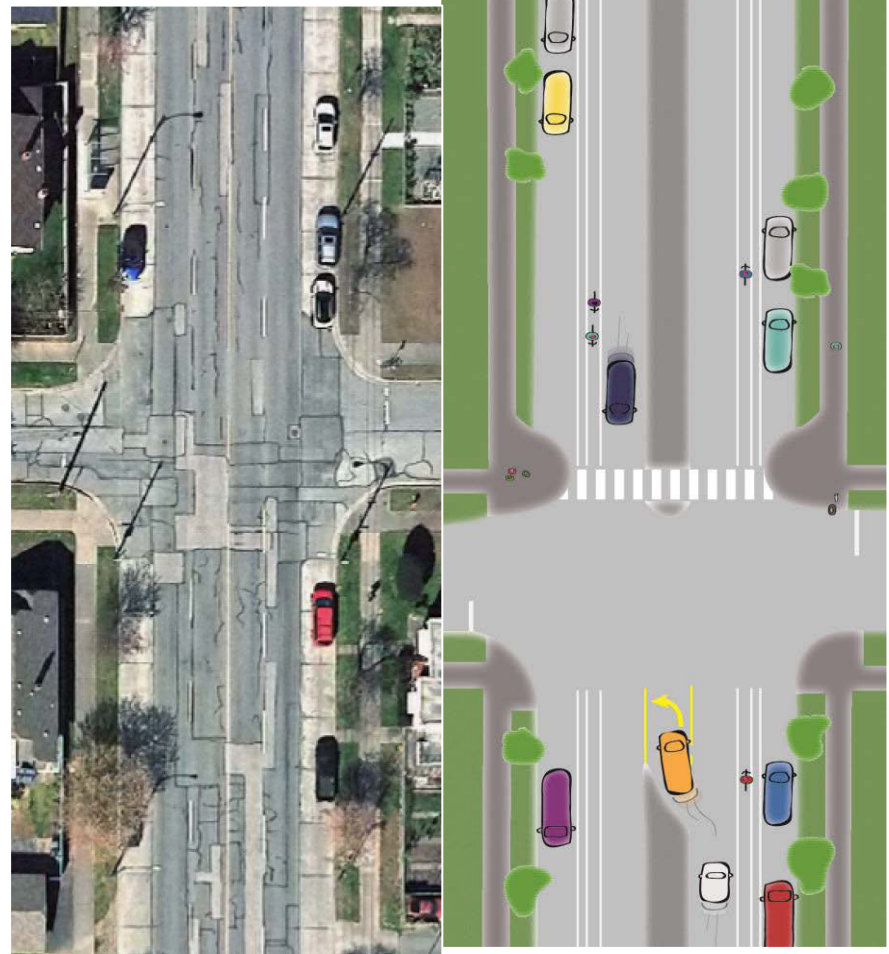
# Nanaimo Street Upgrades

## Coordination with Infrastructure Upgrades

- Critical sewer infrastructure upgrades required
- Presents opportunity to make street safer and more comfortable for everyone.
- Transportation issues first identified in the Grandview-Woodland Community Planning process (2016)

## Proposed Improvements

- Pedestrian safety at 10 intersections
- Sidewalk improvements
- Painted or protected bike lanes, where possible
- Traffic signal upgrades
- Repaving
- Providing left turn lanes where possible by reducing travel lanes (no reduction north of Dundas)



Construction will take place between early 2019 and spring 2020  
Feedback open until December 2<sup>nd</sup> [vancouver.ca/nanaimoupgrades](https://vancouver.ca/nanaimoupgrades)



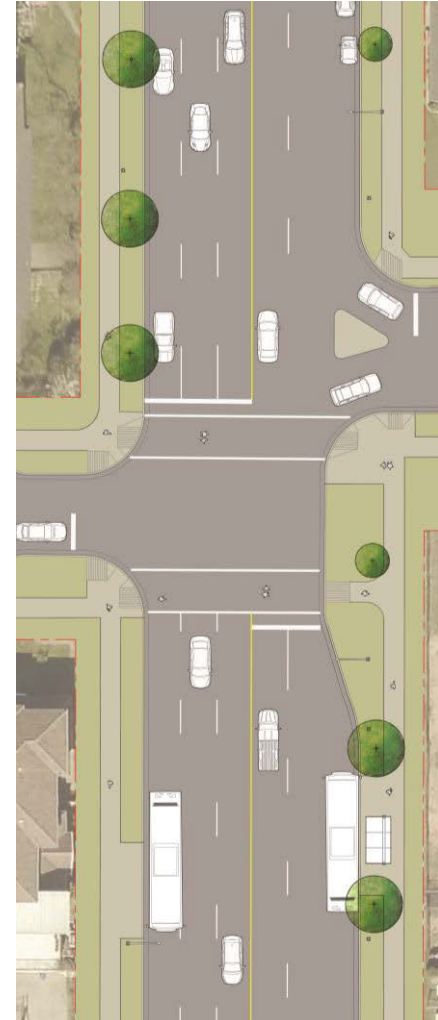
# Nanaimo & Cambridge St

Intersection is immediately adjacent to Tillicum Annex Elementary and Kiwassa Neighbourhood House.

## Proposed Improvements

- Add south crosswalk
- Add traffic diverter
- Upgrade curb ramps
- Add stop bars

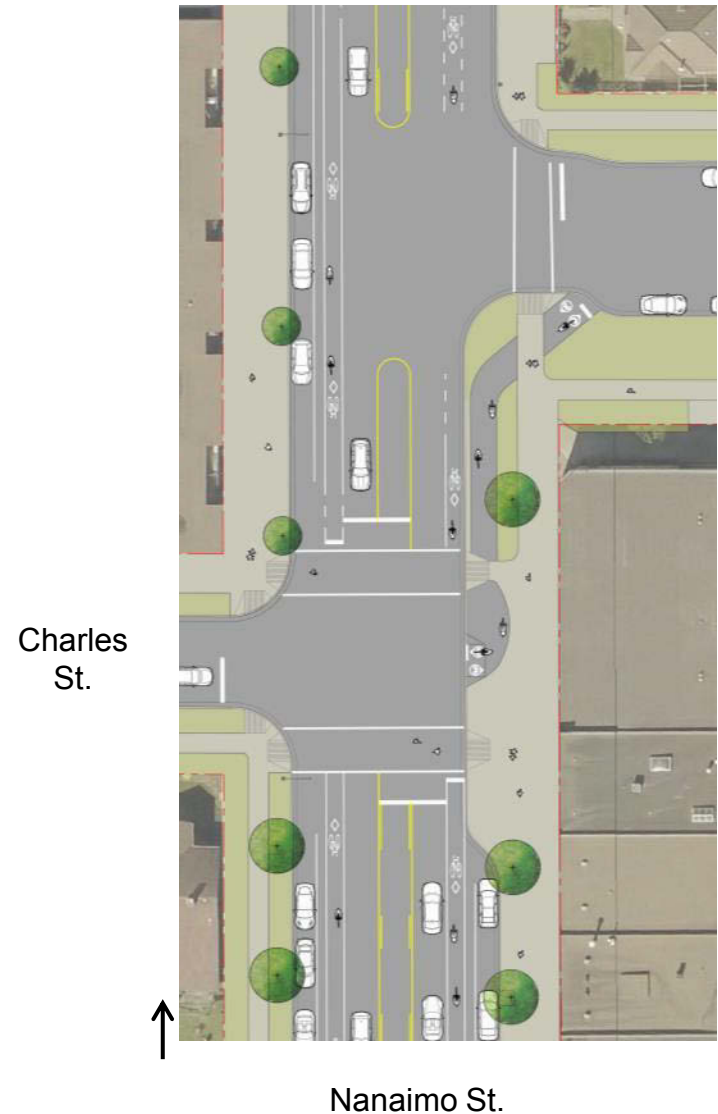
Cambridge  
St.

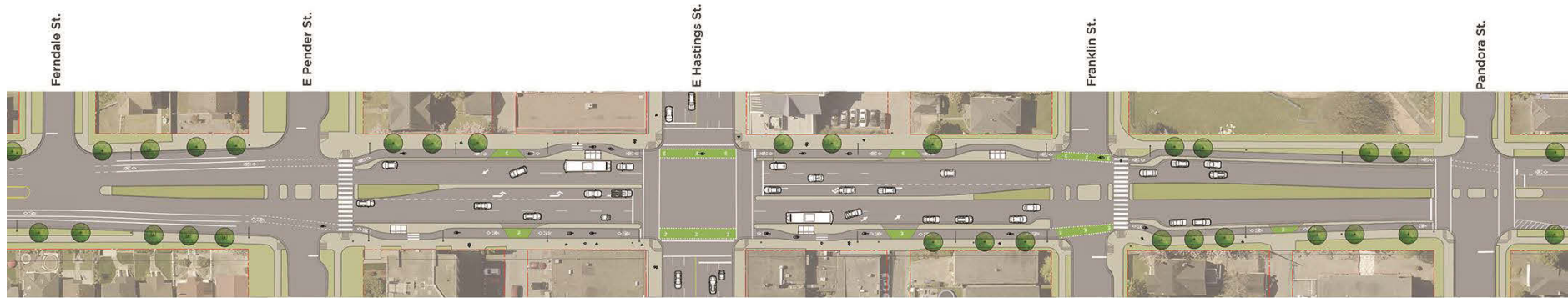


Nanaimo St.

## Proposed Improvements

- Add curb bulge to Charles St.
- Straighten east-west crosswalks
- Relocate and upgrade curb ramps
- Add protected off-street bike path





## Proposed Improvements

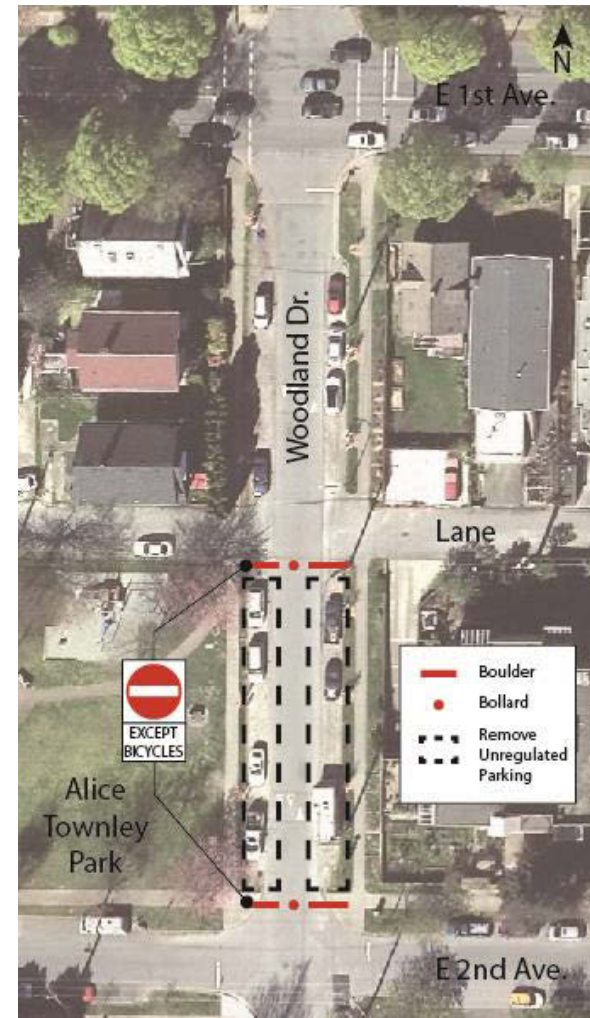
- Widen sidewalk
- Move bus shelter and bus poles closer to the street
- Upgrade curb ramps
- Add protected bike lanes in areas of conflict
- Remove 9 rush regulated parking spots



# Woodland and E 2<sup>nd</sup> Ave

## Background

- Fortis BC using location as a staging area for their gas line upgrades
- City will expand **Alice Townley Park** by closing Woodland Dr between E 2<sup>nd</sup> Ave and the north lane
- Aligns with Grandview-Woodland Community Plan to provide more park spaces and improve safety and comfort for walking and cycling
- Data shows higher vehicle volumes than nearby streets
- Benefits for Grandview Elementary and access to Mosaic Greenway



Contact team by email: [bikeupgrades@vancouver.ca](mailto:bikeupgrades@vancouver.ca) or 3-1-1 or VanConnct app

# Commercial Drive Complete Street

## Status

- Loading and Parking Update – June to September 2017
- Ongoing engagement with the business community - 2018

### Commercial Drive Complete Street Project Business Loading and Parking Update



#### Business and Goods Movement Survey

For background information and the results of the Business and Goods Movement Survey please review the material on the project webpage.

[vancouver.ca/commercial-complete-street](http://vancouver.ca/commercial-complete-street)

The Commercial Drive Complete Street Project was launched late in August 2016 as the first transportation project following the adoption of the Grandview-Woodland Community Plan. In September 2016, the City conducted a Business and Goods Movement Survey with businesses on Commercial Drive.

As part of the Commercial Drive Complete Street Project, the City is reviewing how loading and parking is functioning on The Drive.

This newsletter is to update businesses on the most recent findings and present information on opportunities to improve loading and parking.

Thank you to everyone who took the time to take the Business and Goods Movement Survey last fall!

Your feedback has helped inform monitoring of select commercial zones to understand occupancy and compliance with regulations.

#### Loading Highlights

Based on recent monitoring and analysis, the following tools have been identified to improve loading access:

- **Enforcement.** A number of commercial loading zones are occupied by personal vehicles stopping or parking, which is prohibited. As a result, loading zones are not accessible or available to businesses when needed. The City will increase by-law enforcement to better monitor Commercial Drive.
- **Adjust/update existing zones.** Further review is underway of existing commercial, loading, and passenger zones. There may be an opportunity to better serve customers and businesses by adjusting zone regulation hours or locations.
- **Add parking meters to loading zones.** Adding on-street parking meters to commercial or loading zones for specified times will increase the supply of parking. These parking meters could be available outside loading zone hours/regulations (e.g. evenings and weekends).



Page 1

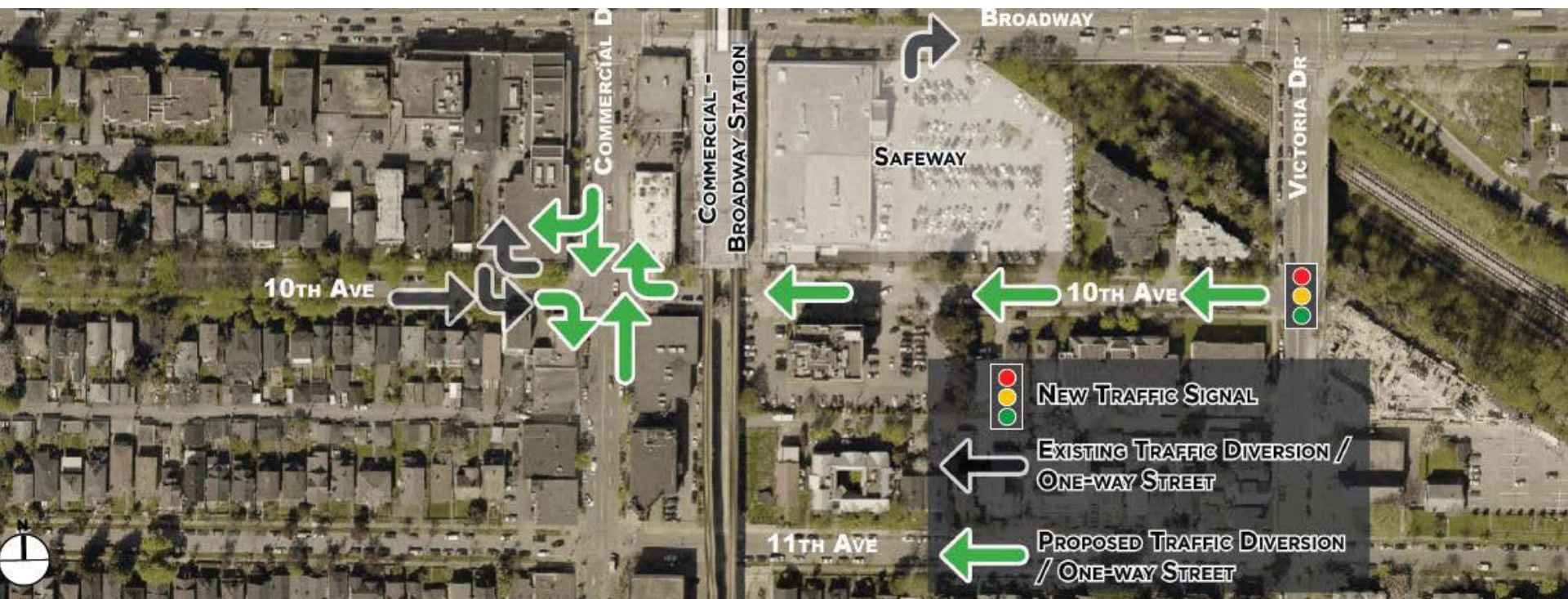
Sign up for updates at [vancouver.ca/commercial-complete-street](http://vancouver.ca/commercial-complete-street)



# 10<sup>th</sup> Ave Corridor at Commercial Dr

## Status

- City staff are coordinating with TransLink around the completion of the Commercial-Broadway Station upgrades
- Minor design adjustments have been made based on feedback from local stakeholders
- City staff aim to begin construction in Q1 2019.







**Break**



# Adanac Overpass

## Background

- Residents concerned about non-local short-cutting through neighbourhood
- Areas of concern Adanac Bikeway, and streets near A.R. Lord Elementary
- Rupert Street southbound transit connection opened to proved alternate route

## Next Steps

- Fortis BC has completed its work on E 1<sup>st</sup> Ave
- Access remains restricted to prevent short-cutting as traffic patterns stabilize
- Additional data collection and monitoring
- Consultation Winter 2019



Future public consultation will take place before further changes.  
[vancouver.ca/adanac-overpass](http://vancouver.ca/adanac-overpass)

# Gastown Complete Street

## Background

Gastown's streets require major repair. This means we have a once in a lifetime opportunity to holistically rethink the area's streets



## Goals

- Explore the potential for Vancouver's first **car-light or pedestrian priority district**
- Address a major gap in the **all ages and abilities cycling network**
- Enhance transit service for **bus and future streetcar**
- Support and enhance what is **unique about Gastown**
- Celebrate and acknowledge **Gastown's complex history and work towards reconciliation**

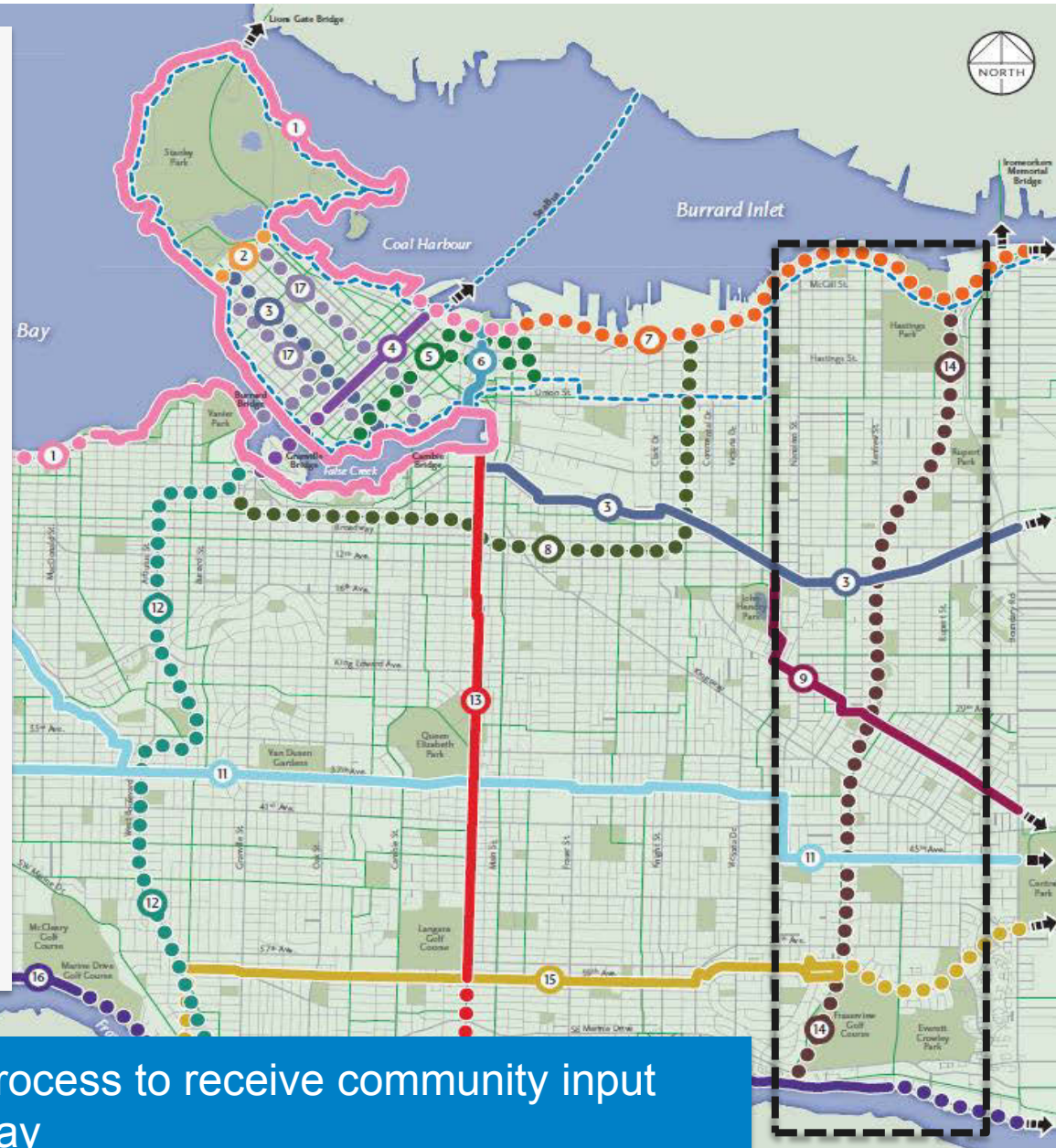




# Eastside Crosscut Greenway

## Background

- July 2018 Council direction for an East Van greenway
- 1995 Vancouver Greenways Plan includes a future north-south route
- Spring 2019, staff will complete a review of route and begin engagement process



Fall 2019, public consultation process to receive community input and guidance on future greenway



# Update on Vancouver Public Bike Share Program

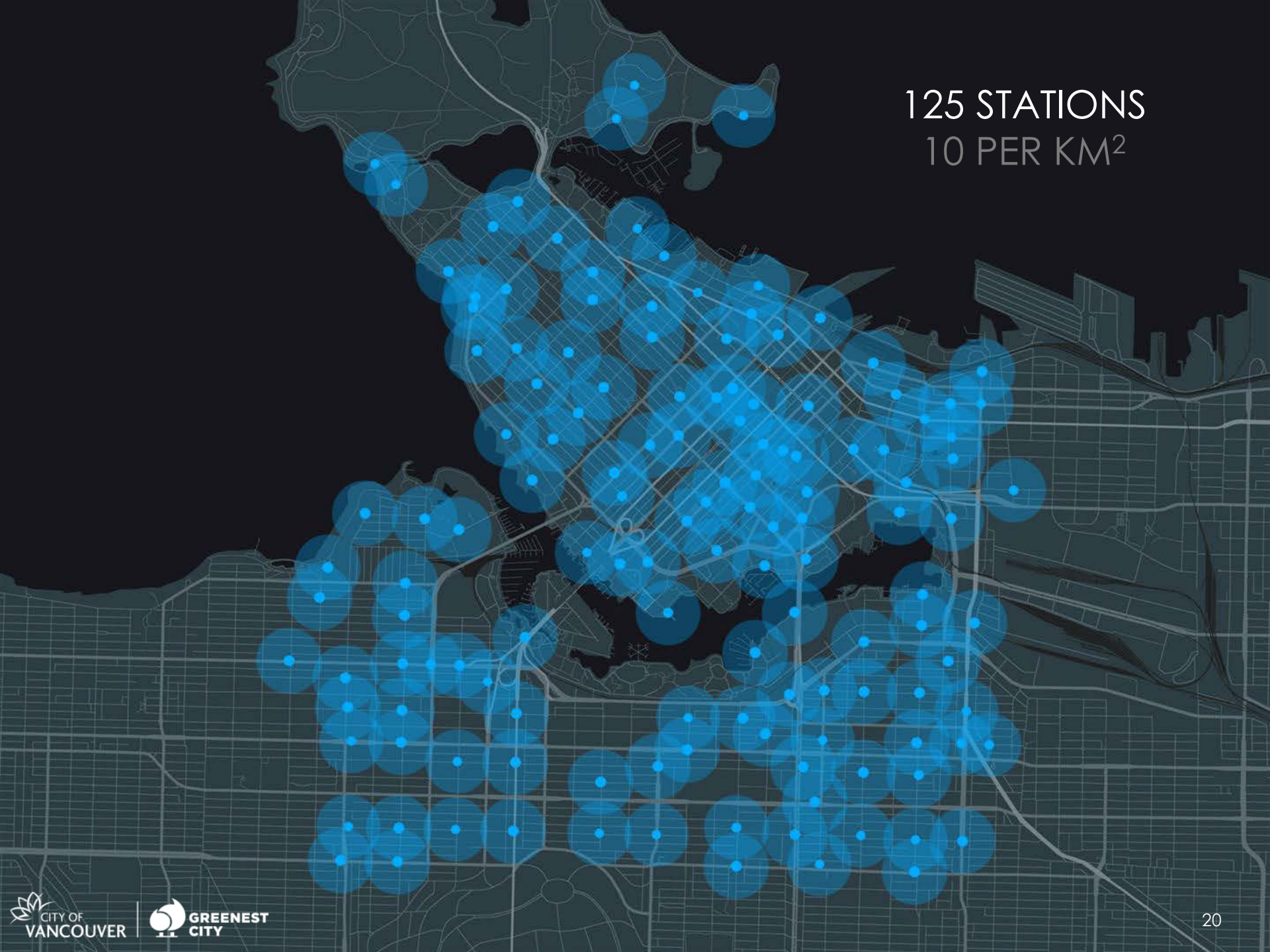


Scott Edwards

February 20, 2018



125 STATIONS  
10 PER KM<sup>2</sup>





# PHASE II EXPANSION

PHASE I

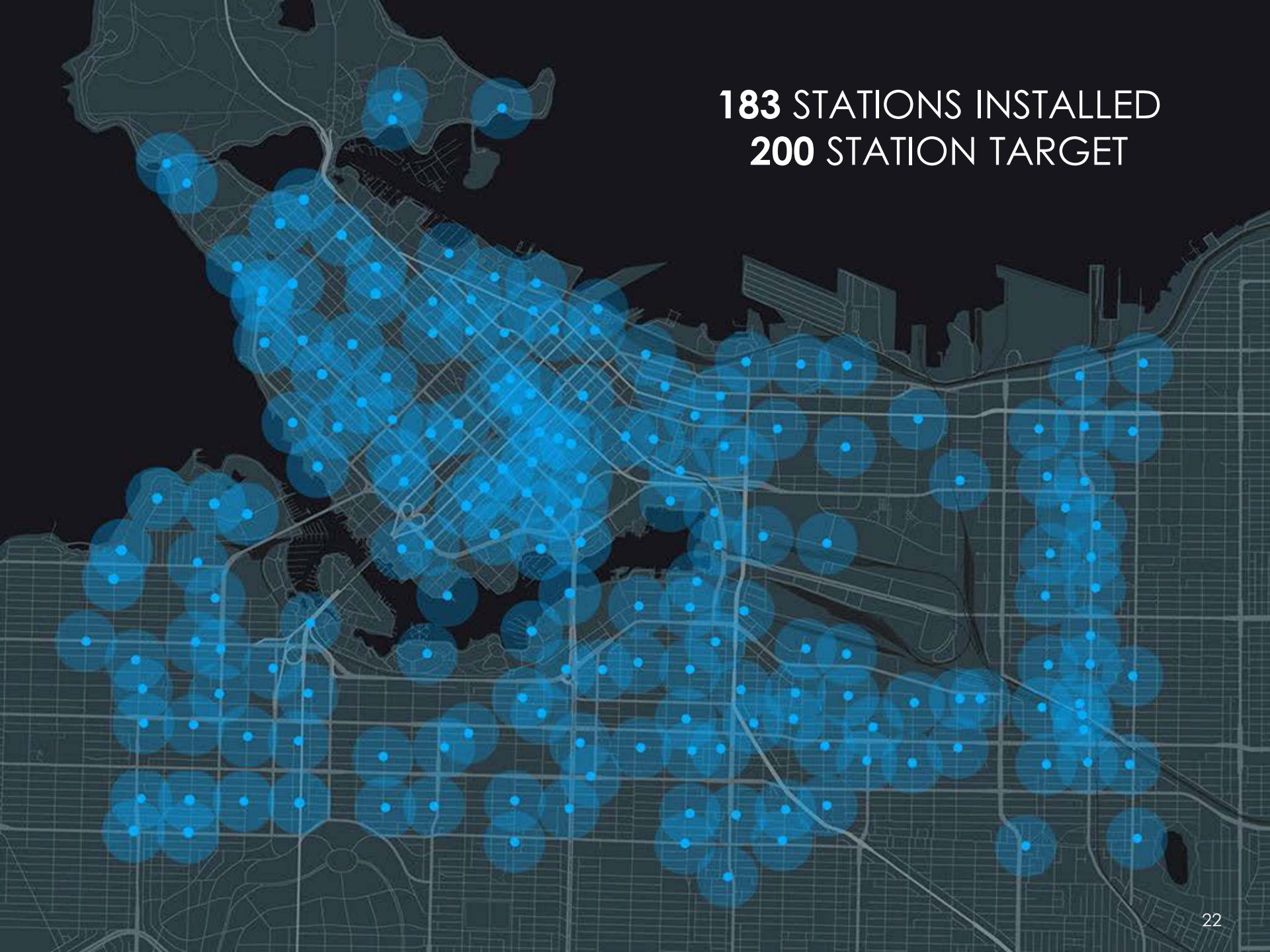
PHASE II

• COMMERCIAL  
-BROADWAY

VICTORIA DR

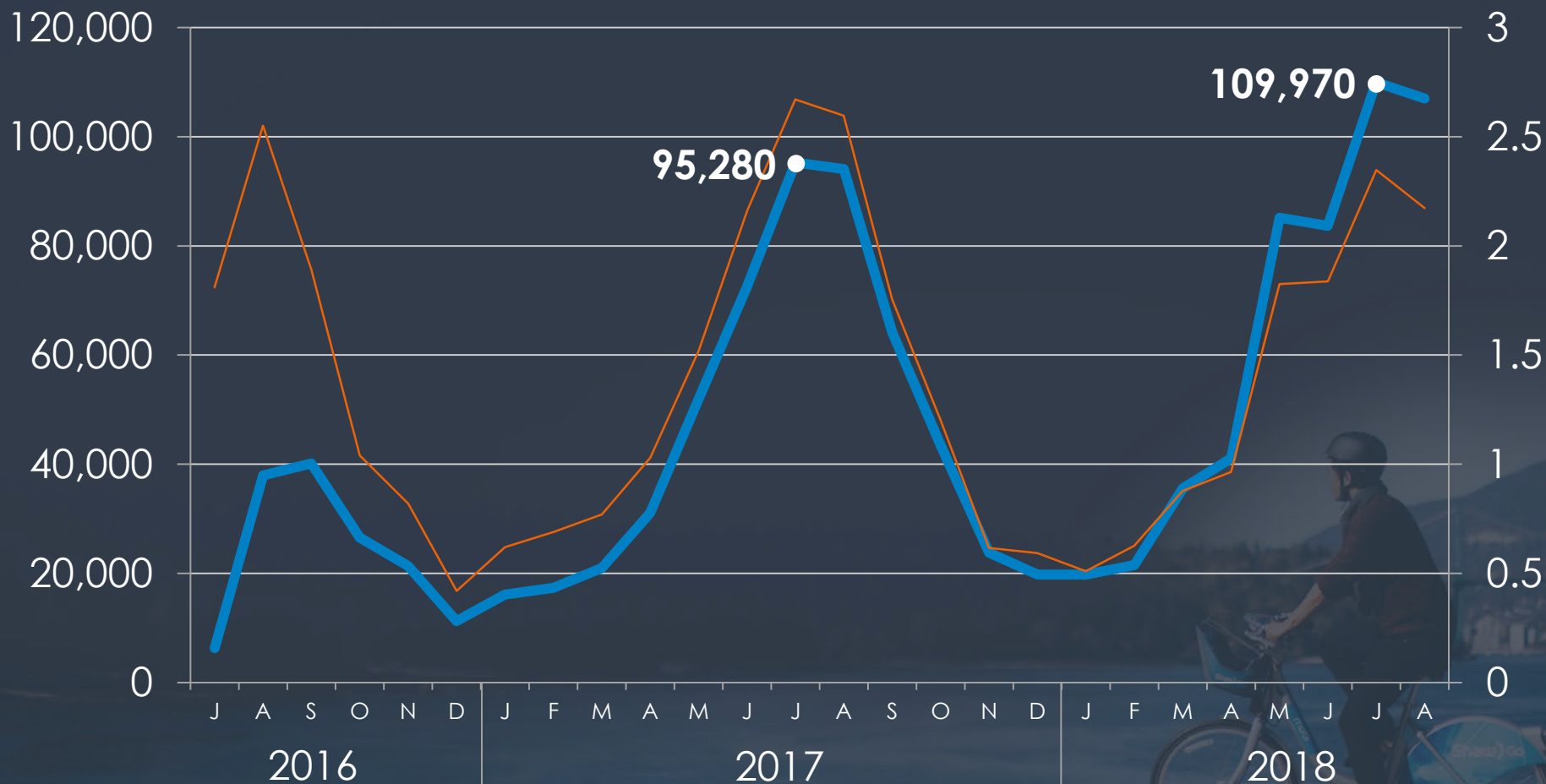
16<sup>TH</sup> AVE

**183** STATIONS INSTALLED  
**200** STATION TARGET



# MONTHLY RIDERSHIP

— Total Rides — Rides per Bike per Day





## REDUCING BARRIERS TO PBS

- Expanded service area
- Lowered age limit to 12 years
- \$20 Annual Passes



# MOST POPULAR STATIONS ALL USERS





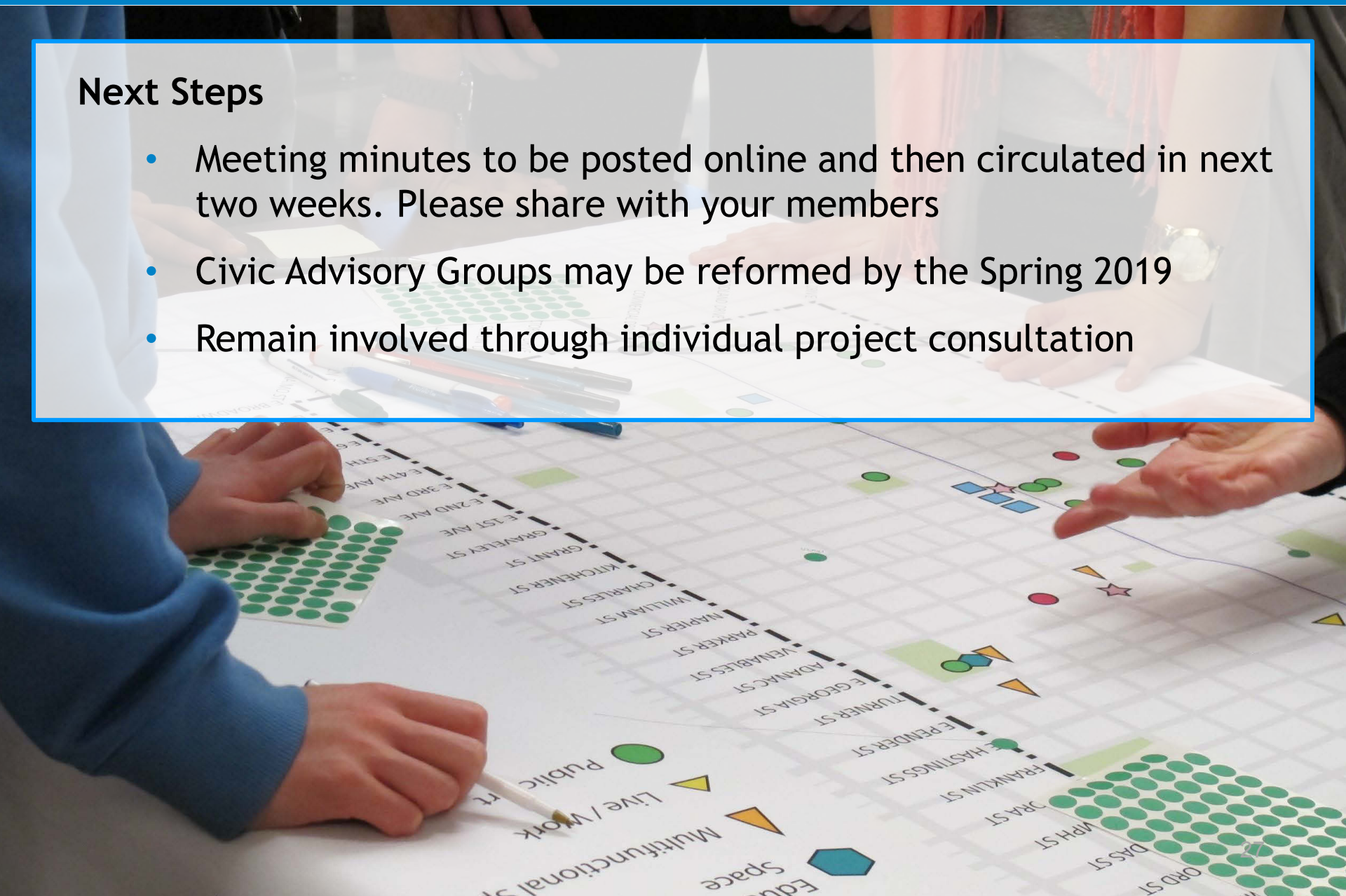


Feedback & Questions



## Next Steps

- Meeting minutes to be posted online and then circulated in next two weeks. Please share with your members
- Civic Advisory Groups may be reformed by the Spring 2019
- Remain involved through individual project consultation



**BIG Thank You!**

**GRANDVIEW-  
WOODLAND**

**You are here**



# INDUSTRY TRENDS





## University of British Columbia



## Victoria | Richmond Port Coquitlam | Port Moody









# E-BIKES





drOpbike

mobi | Shaw)Go

U-bicycle

U-bicycle

U-bicycle

Regional bike share



# MOBI

## BY SHAW GO

