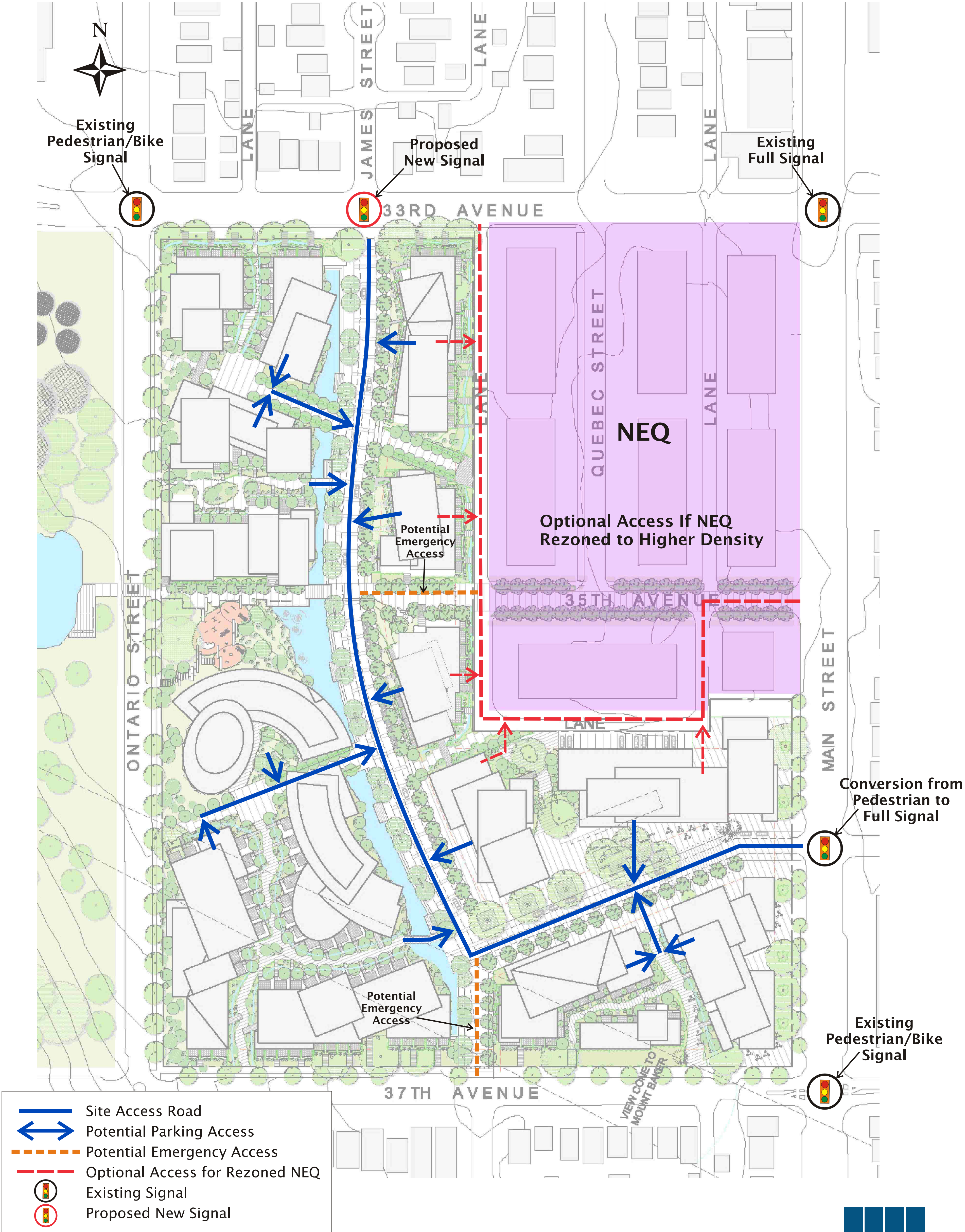
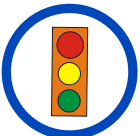
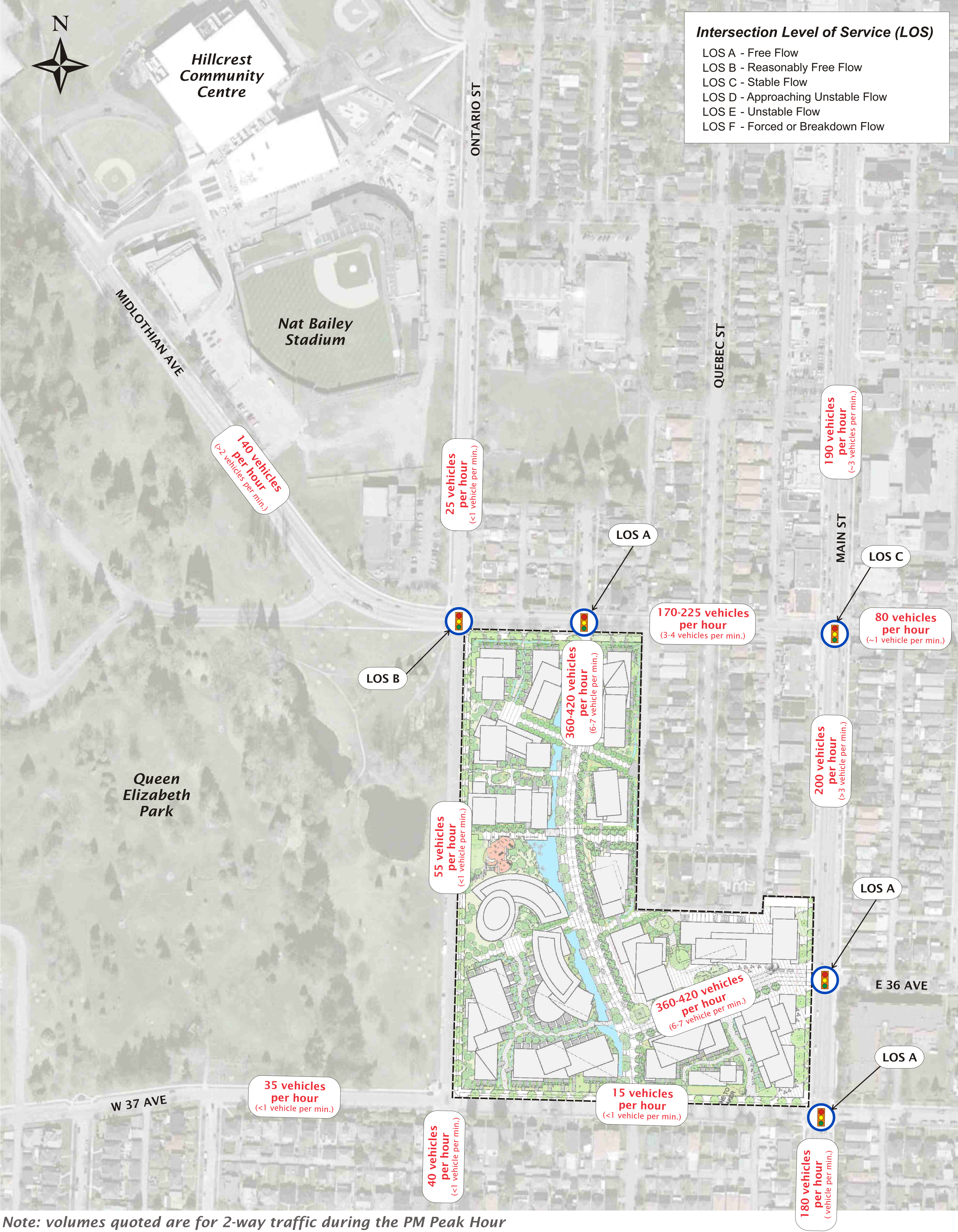


# Site Access Plan





# Future Site Vehicle Movements

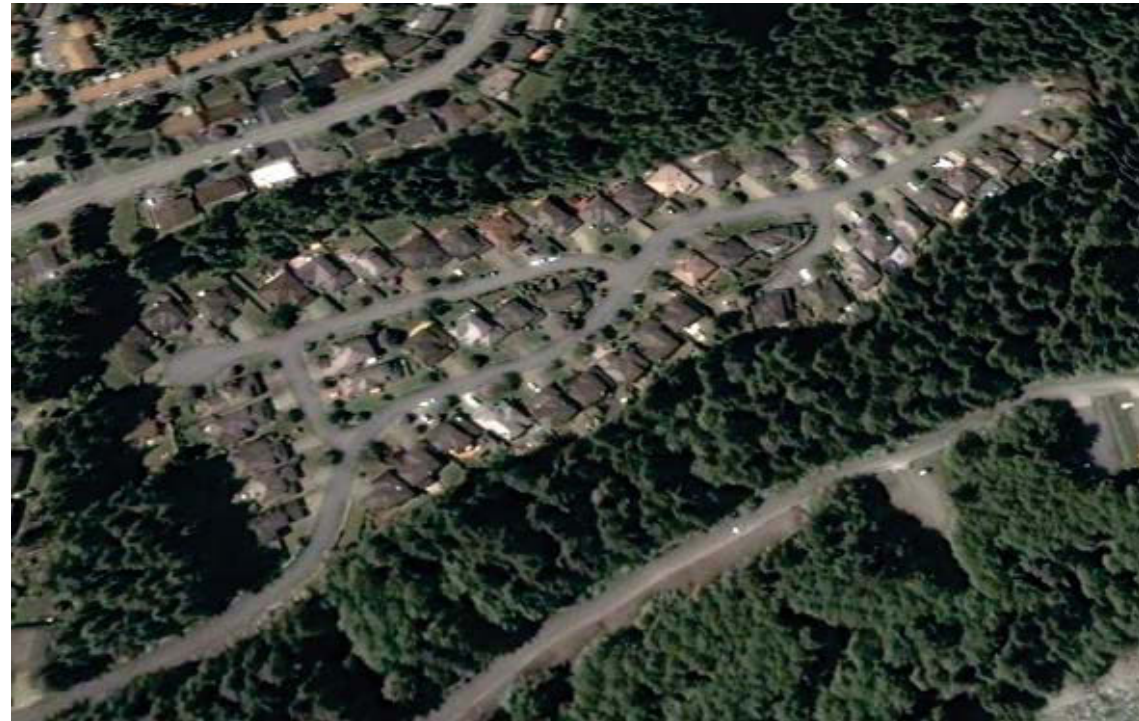


Signalized Intersection (existing and future)



# *Development Forms & Vehicle Trips*

## **Residential Traffic - Form & Location Matters**



### **Single Family Homes**

**Timber Ridge - North Vancouver**  
55 homes

**1-2 blocks to transit, over  
2 kilometres to shops/services**

**Weekday Afternoon Peak Hour**  
**58 vehicle trips (40 in, 18 out)**

**Trip Rate: 1.05 veh trips per unit**



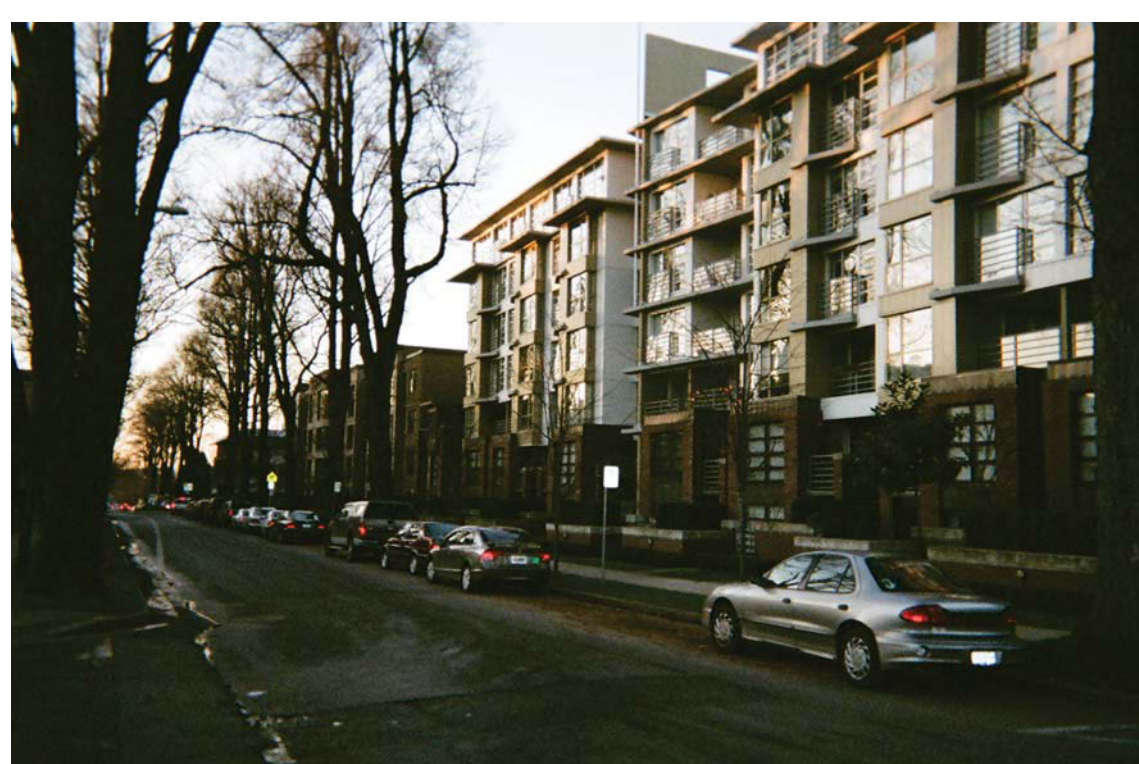
### **Quilchena Park**

**Arbutus St & 33rd Ave**  
680 dwelling units

**Adjacent to transit, 2 blocks to  
Arbutus Village shops/services**

**Weekday Afternoon Peak Hour**  
**282 vehicle trips (168 in, 114 out)**

**Trip Rate: 0.41 veh trips per unit**



### **Arbutus Walk**

**2181 & 2137 W10th Ave**  
110 dwelling units

**Less than 1 block to transit  
and shops/services**

**Weekday Afternoon Peak Hour**  
**26 vehicle trips (20 in, 6 out)**

**Trip Rate: 0.24 veh trips per unit**



### **False Creek North**

**Vancouver Downtown Peninsula**

**Less than 1 block to transit  
and shops/services**

**Trip Rate: 0.15 veh trips per unit**

**Little Mountain Development – Master Plan**