



WELCOME!

# Deep Dive: DOGS



**JOHN HENDRY PARK**  
MASTER PLAN



**JOHN  
HENDRY  
PARK**  
MASTER  
PLAN

# Session Purpose

Work with participants to evaluate options for the dog off-leash area, to understand your perspectives on what you believe are the most positive attributes and those where you may have concerns or questions.



# Agenda

Session Description	Time
Welcome and Agenda Review	7:00 – 7:15 p.m.
What We've Heard So Far	7:15 – 7:30
Presentation: Options / Proposals	7:30 – 7:45
Focus Group Discussion	7:45 – 8:45
Evaluation, Next Steps + Wrap Up	8:45 – 9:00 p.m.



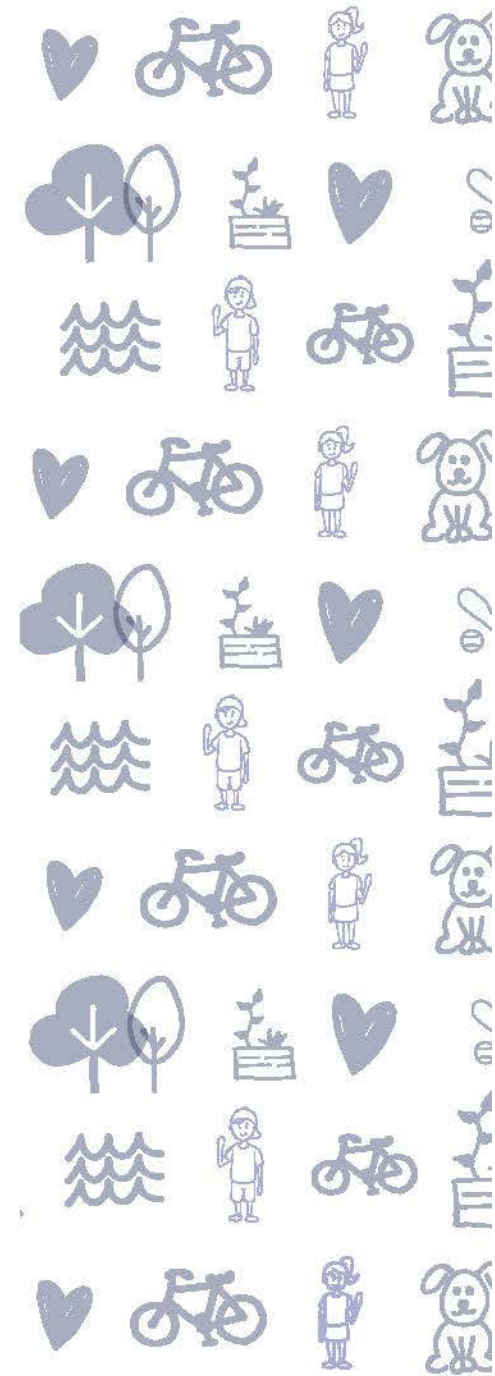
# JOHN HENDRY PARK MASTER PLAN

WORKSHOP

## Our Discussion Values

**How we will work together, in everyone's best interest:**

1. We will treat each other with respect and dignity
2. We will balance air time (one person speaks at a time)
3. We can speak only for ourselves (and not on behalf of others)
4. We will listen to understand
5. We value diversity and inclusion



# What We've Heard So Far...

## Open House Oct. 5

- 250 participants

## Survey

- 1,150+ responses

## Workshop Nov. 19

- 50 participants, various topics







# LET'S FETCH! Off-Leash Area







# WHAT WE'VE HEARD ABOUT THE Off-Leash Area



## ASSETS & OPPORTUNITIES

- 1 North beach is very popular for dog swimming and socializing and is where most off-leash visitors gather.
- 2 Northwest beach has steeper slopes so is less popular for dog swimming, but is sometimes used by shyer dogs.
- 3 Surrounding open spaces provide places for dogs to run and play.
- 4 Existing docks are popular amongst all visitors (with and without dogs), however, they are deteriorating and may need to be replaced or removed soon.
- 5 Shaded seating structure is a very popular place for socializing and relaxing for all park users.
- 6 Off-leash areas away from the lake provide space for shy or quieter dogs to play or for training.
- 7 North parking lot directly adjacent to the off-leash area allows easy access.

## CONSTRAINTS & CHALLENGES

- 8 Primary conflict area between off-leash area users, active transportation users, and pedestrians.
- 9 Farmers Market at the north parking lot increases activity and potential for conflict on Saturdays.
- 10 Existing lake trail leads visitors unexpectedly into the most well-used part of the off-leash area.
- 11 No clear signage indicating entry into the off-leash area.
- 12 Boundary between off-leash area and designated sports fields is poorly defined.
- 13 Boundary between off-leash area and BC Parkway Trail is poorly defined.
- 14 Existing natural habitat area is vulnerable to dog activity.
- 15 Off-leash activities observed in the on-leash designated parts of John Hendry Park.



# WHAT WE'VE HEARD ABOUT THE Off-Leash Area

Quotes from the online survey and open house:

Dog park must NOT be fenced or made smaller

Some fencing near the busiest path intersections is appropriate

Enclose it all! Dogs don't know abstract boundaries

Do NOT have circulation routes go through the dog area, as this creates the potential for conflict





NOV. 19, 2019

# DOG OFF-LEASH AREA



John Hendry Park Workshop - November 19, 2019

Live graphic recording:  
Tanya Gadsby



**JOHN HENDRY PARK**  
MASTER PLAN





# DESIGN GROUND RULES FOR John Hendry Park Overall



Protect Natural  
Spaces



Provide Diverse  
Options



Ensure Ecological  
Gains



Create Coherent Park  
Design



Support the City's  
Commitment to a  
Green Vancouver



Manage Costs



Support Safety &  
Accessibility

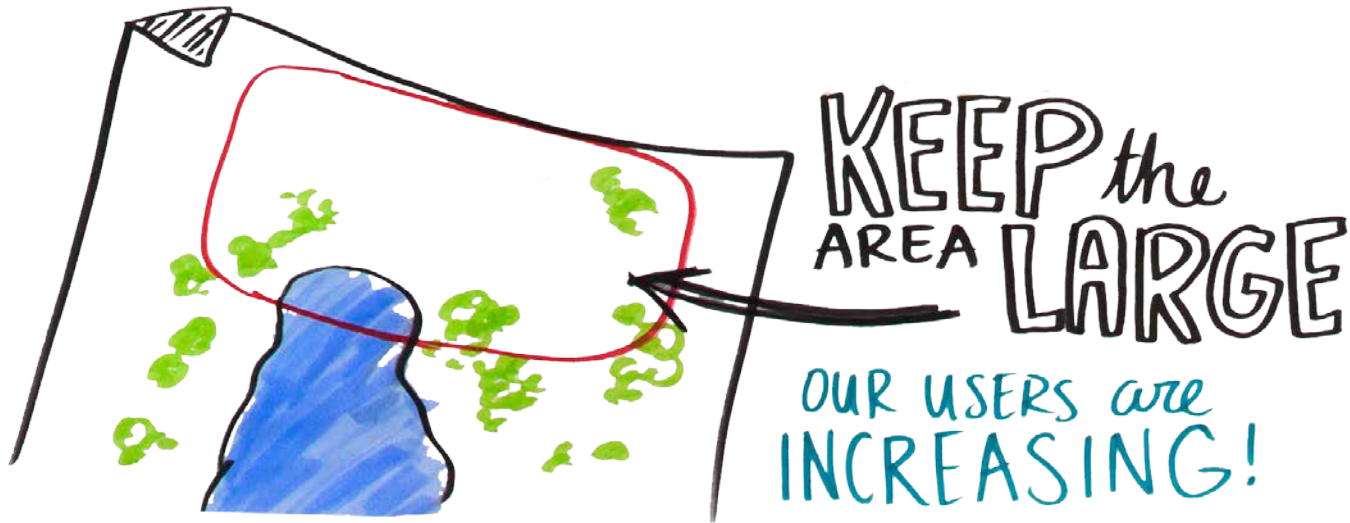






# Size

What you've told  
us:



The Options:

- Size for all options consistent with existing
- Final option will need to align with other park uses
- Intent is to stay as close as possible to







# Location

What you've told us:



The Options:

- All options are in similar location to existing, including water access at the north end of the lake
- Master Plan is also looking at options for water





# Routes for All

What you've told  
us:



The Options:

- Different options for how to route main pathways
- Trade-offs between potential for conflict and barriers





# Cycling Route

What you've told us:



The Options:

- Investigate ways to adjust BC Parkway cycling route
- Need to work with engineering and the cycling community to identify a win-win-win route

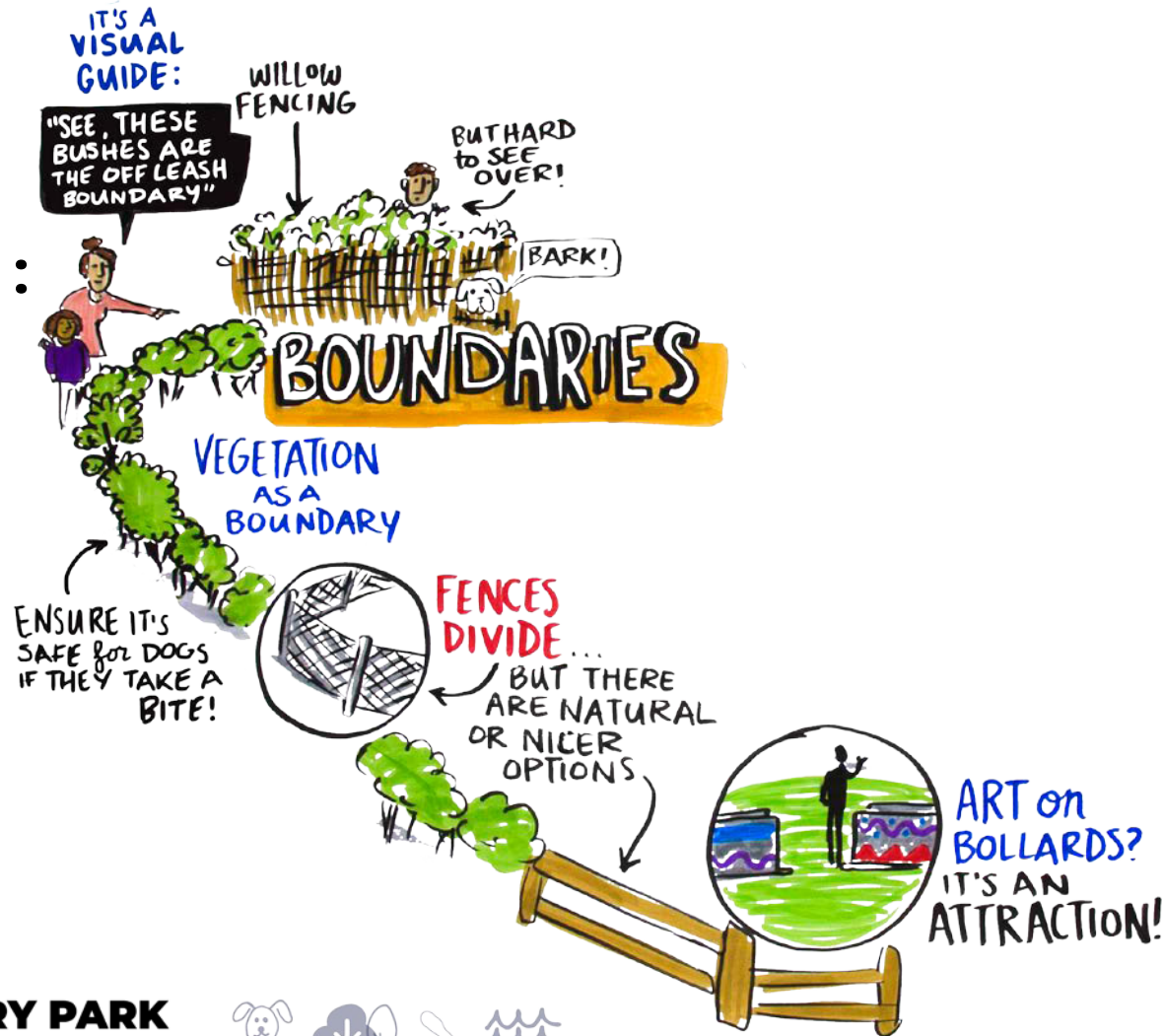






# Clarify Boundaries

What  
you've  
told us:



The Options:

- Balance *People Parks & Dogs Strategy* recommendations and public input
- Explore different combinations of permeable and secure boundaries
- Some adjacent



# Mitigate Less Compatible Uses

What you've told  
us:



The Options:

- Consider where boundaries are needed to protect ecological assets
- Balance amenities like lighting with





# Improve Accessibility

What you've told  
us:



The Options:

- Begin outlining primary path network
- Next step is defining internal circulation, including accessible routes







# Add Desirable Amenities

What  
you've  
told  
us:



The Options:

- List of potential amenities identified
- Looking for input from users on where amenities are best located





# Encourage Stewardship & Respect

What you've told us:



The Options:

- Identify locations for signage and information







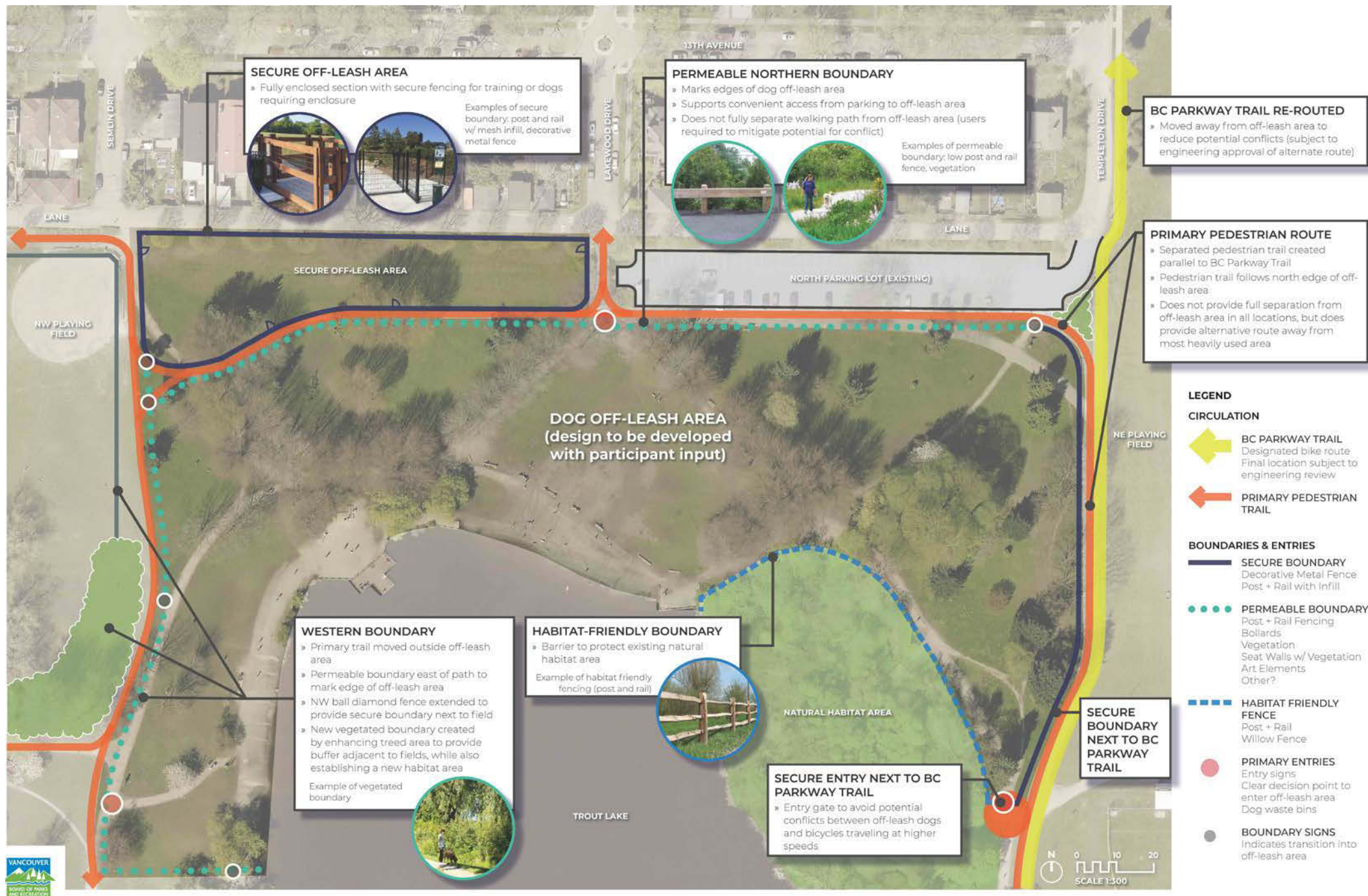
# Three Options

- Purpose is to receive feedback on viable options that align with the policy
- Frameworks being shared focus on “big moves”
  - General size and layout
  - Primary circulation routes for cyclists and pedestrians
  - Relationship to parking
  - Potential boundaries
- Looking for feedback on what works well, what concerns you, other ideas



# Big Moves Option A

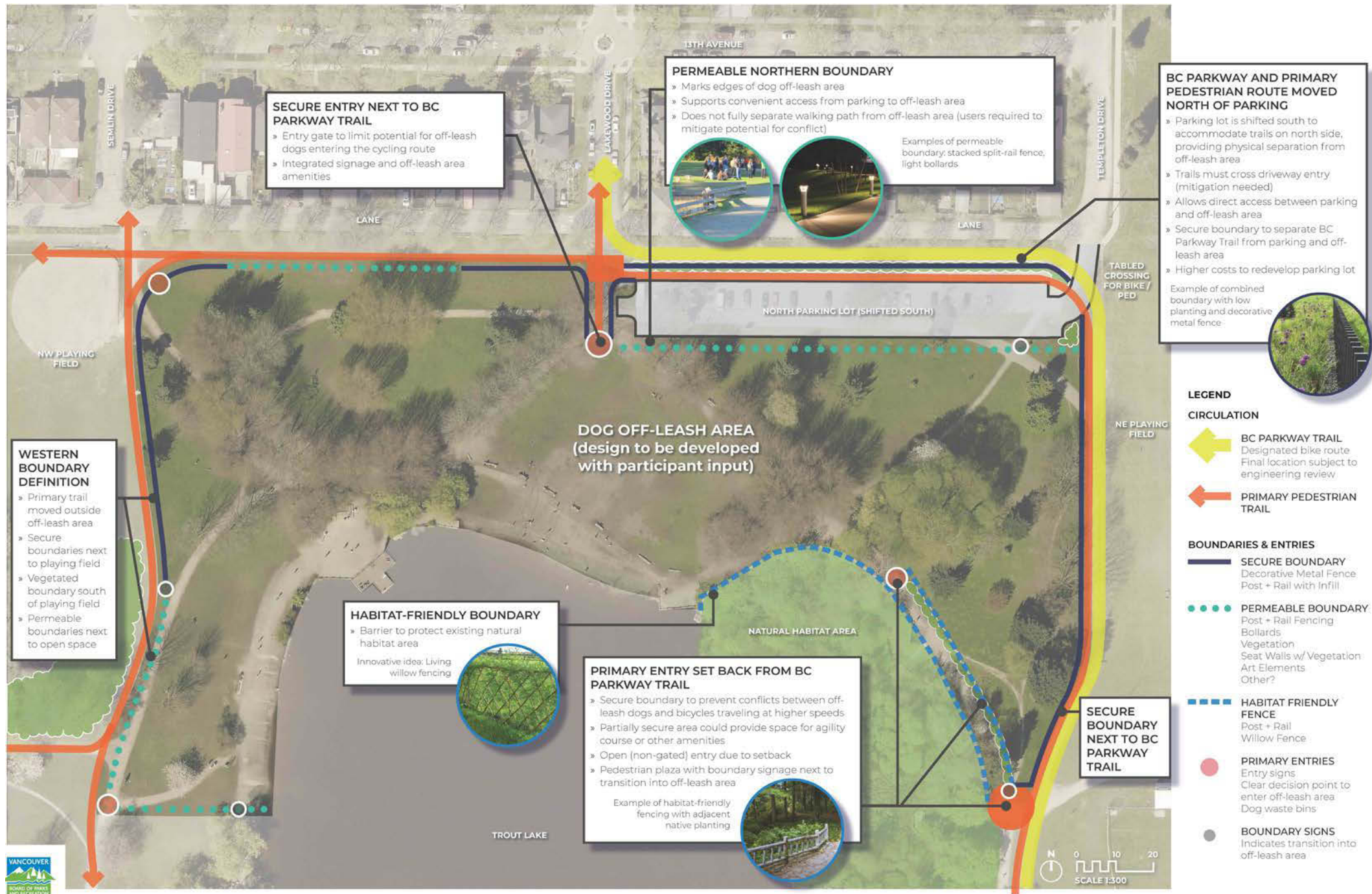
- Relocation of BC Parkway Trail
- Secure boundary and gate next to cycling route
- Alternate pedestrian route
- Fenced playing field
- Habitat-friendly boundary
- Dedicated secure off-leash area





# Big Moves Option B

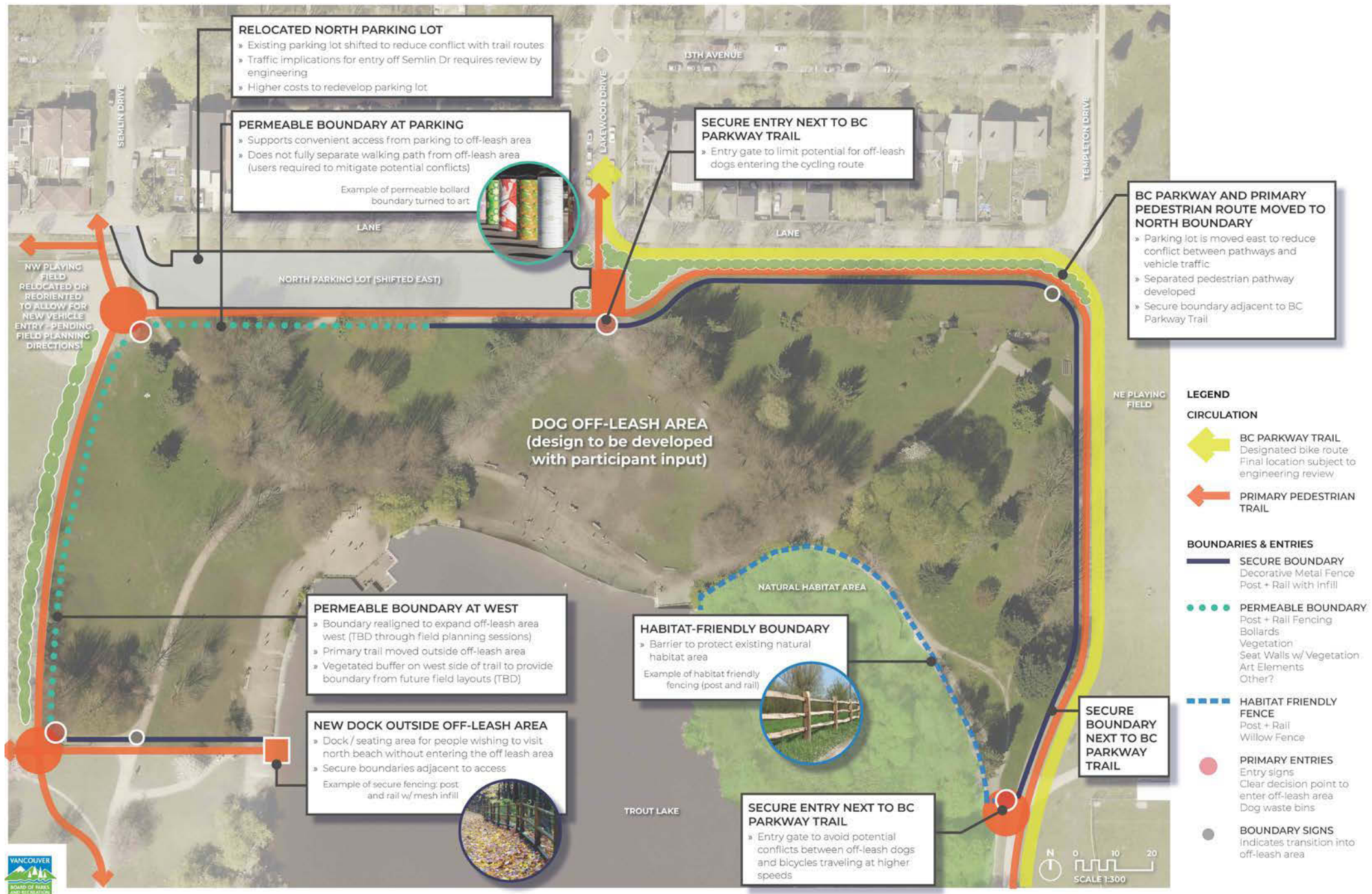
- Shift parking to reroute BC Parkway Trail and walking trail north of parking
- Secure entry from north
- Southeast entry “portal”
- Secure western boundary next to playing field
- Habitat-friendly boundary





# Big Moves Option C

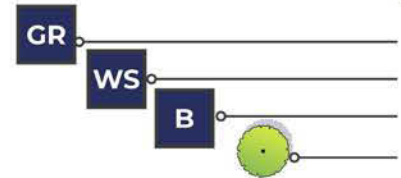
- Move parking east to reduce trail conflicts
- Secure entry from north
- Shifting west and south boundaries (pending changes to fields)
- New dock outside off-leash area
- Habitat-friendly boundary





# Amenity Ideas

## TEMPLATE LEGEND

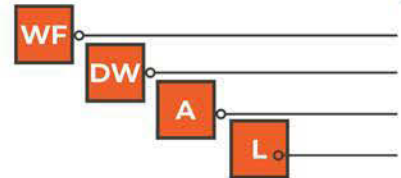


## AMENITY / FEATURE

### STANDARD AMENITIES

- » Garbage Receptacles
- » Dog Waste Station
- » Benches
- » Shade Trees

## AMENITY / FEATURE IMAGE



### SPECIAL AMENITIES

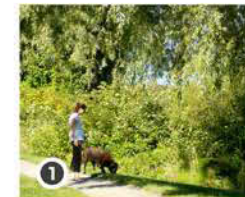
- » Water Fountains (for pups and humans)
- » Dog Wash Station
- » Agility Features
- » Lighting



### PERMEABLE / OPEN BOUNDARIES

Permeable boundaries are recommended next to more compatible adjacencies

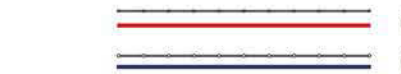
- 1 Vegetation (shrubs)
- 2 Bollards, Beach Logs, Art Elements
- 3 Post and Rail Fencing



### HABITAT FRIENDLY FENCE

Recommended next to natural habitat and environmentally sensitive areas

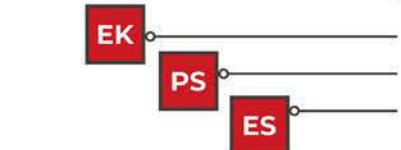
- 4 Post and Rail or Split Rail Fencing (open for habitat passage)
- 5 Willow Fencing



### SECURE BOUNDARIES

Secure boundaries are recommended next to less compatible adjacencies

- 6 Post and Rail Fencing with Mesh Infill
- 7 Decorative Steel Fencing



### SIGNAGE

- » Entry Sign Kiosk
- » Perimeter / Boundary Sign
- » Educational Signage



# Focus Group Format

Concurrent break-out groups with the same format + questions.

For each option, the following questions will be asked:

- 1) What features of this option do you like most and why?
- 2) What feature of this option do you like least and why?
- 3) Using the flashcards with stars, please rate this option between 1 and 5 stars.
- 4) Which of the identified amenities is most important to you, and what general area would be ideal for you?





# Next Steps

## **Dec-Jan**

The project team will review all feedback and work to develop a single option for the off-leash area (and other deep dive topics).

The project team will work to combine and align all recommendations within the broader park context.

## **Late Feb**

A workshop will be hosted to discuss emerging consolidated Master Plan directions, with detailed recommendations on the off-leash area and all park components.

## **April**

A final open house to review the proposed Master Plan and share feedback.



# Thank You!

Please fill out a session evaluation before you go

*Time is precious so thank you for spending yours with us.*

