

WELCOME!

Deep Dives:
Fields & Play,
Market & Garden



JOHN HENDRY PARK
MASTER PLAN



**JOHN
HENDRY
PARK**
MASTER
PLAN

Session Purpose

Work with participants to evaluate options for:

- fields and play areas
- the farmers market
- a possible community garden

To understand your perspectives on what you believe are the most viable options / features.



Agenda

Session Description	Time
Welcome and Agenda Review	7:00 – 7:15 p.m.
What We've Heard So Far	7:15 – 7:30
Presentation: Options / Proposals	7:30 – 7:45
Focus Group Discussions	7:45 – 8:45
Evaluation, Next Steps + Wrap Up	8:45 – 9:00 p.m.



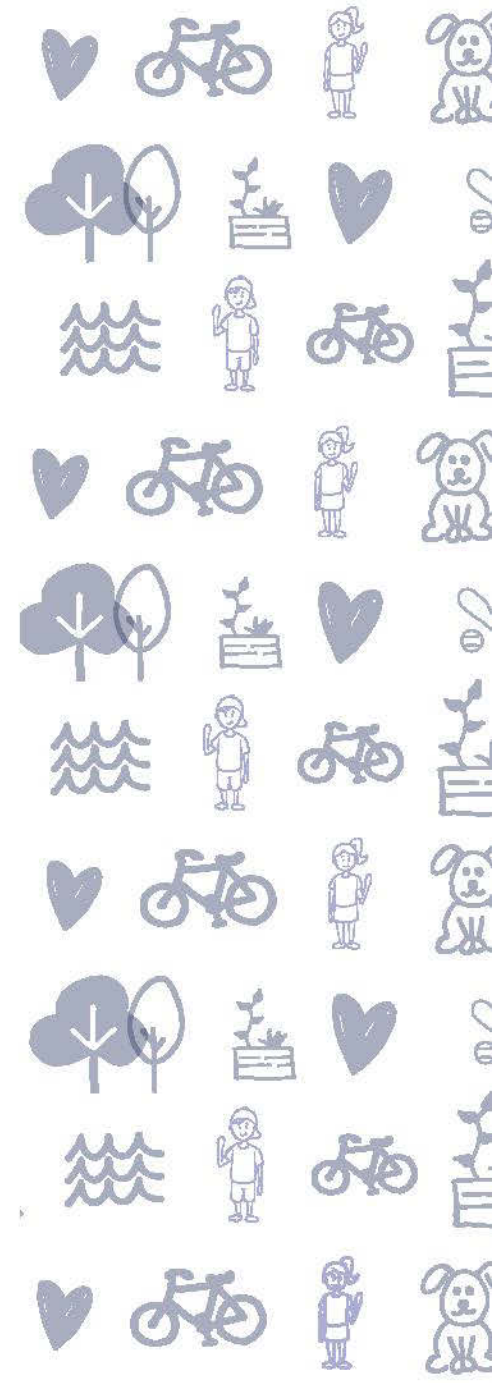
JOHN HENDRY PARK MASTER PLAN

WORKSHOP

Our Discussion Values

How we will work together, in everyone's best interest:

1. We will treat each other with respect and dignity
2. We will balance air time (one person speaks at a time)
3. We can speak only for ourselves (and not on behalf of others)
4. We will listen to understand
5. We value diversity and inclusion



What We've Heard So Far...

Open House | Oct. 5

- 250 participants

Survey

- 1,150+ responses

Workshop | Nov. 19

- 50 participants, various topics

Deep Dive Session 1 | Nov. 27

- 30 participants, off-leash area





LET'S PLAY!

Playing Fields, Courts & Playgrounds





WHAT WE'VE HEARD ABOUT Playing Fields

- People love to play in JHP
- Wide variety of activities
- Balancing field use and open space is important
- Key Challenges:
 - Conditions
 - Interface / Adjacencies
 - Access to Amenities





WHAT WE'VE HEARD ABOUT Playgrounds

- Community Centre playground is loved
- Support for upgrading the South Beach playground
- People were inspired by images of nature-play or natural character

Top 3 play inspiration
images selected by
participants at the
October 5th
Open House.





DESIGN GROUND RULES FOR John Hendry Park Overall



Protect Natural
Spaces



Provide Diverse
Options



Ensure Ecological
Gains



Create Coherent Park
Design



Support the City's
Commitment to a
Green Vancouver



Manage Costs



Support Safety &
Accessibility

FIELDS, COURTS & PLAYGROUNDS



John Hendry Park Workshop - November 19, 2019

Live graphic recording:
Annalee Kornelsen
@mleannalee for:

fuselight
creative
graphic design





Natural Character

What you've told
us:



- Fit into character of the park
- Mixed opinions on materials
- Balance built features with natural features





Play for All Ages

What you've told
us:



- Consider different ways to create more spaces attractive to youth
- Provide challenges
- Further youth engagement





Food & Comfort

What you've told
us:



- Consider updates to the South Beach Building
- Think about how to create a strong destination at the South Beach





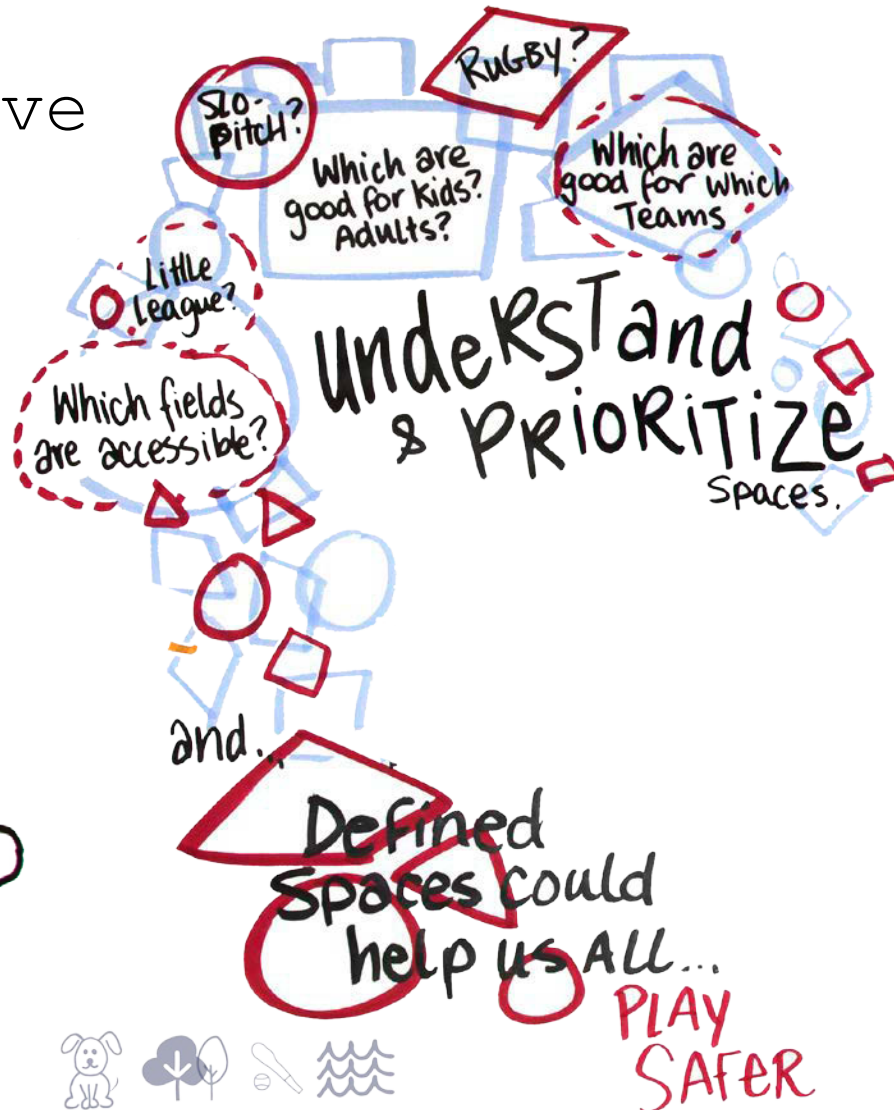
Field Spaces

What you've told us:

the Fields are
Too **Small** for
Adult **SOFTBALL**



JOHN HENDRY PARK
MASTER PLAN

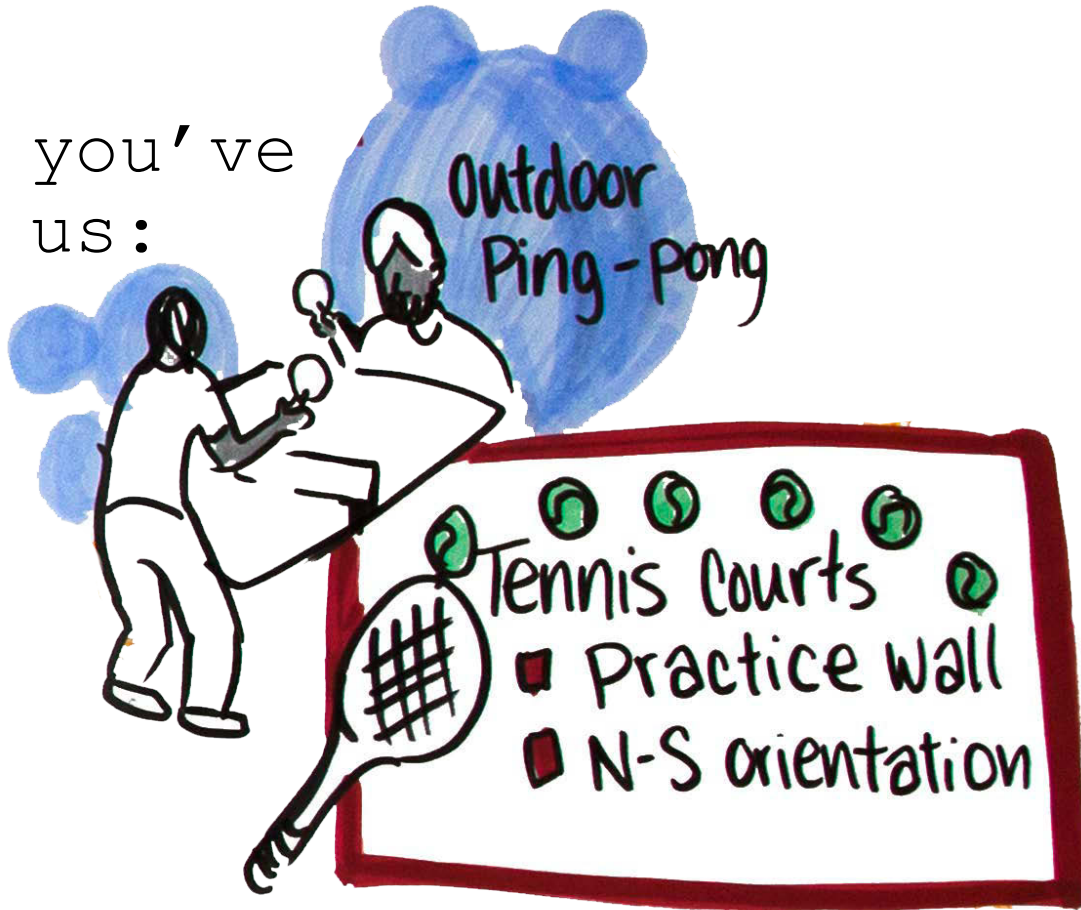


- Consider upgrades and/or relocations to existing fields
- Endeavour to maintain / increase options for access to quality field



Courts

What you've
told us:



- Consider new types of court spaces
- Think about how to increase places to watch and socialize





Lighting

What you've
told us:



- Limit lighting in other park areas to support natural environment
- Park Board's focus is on lighting all weather field areas

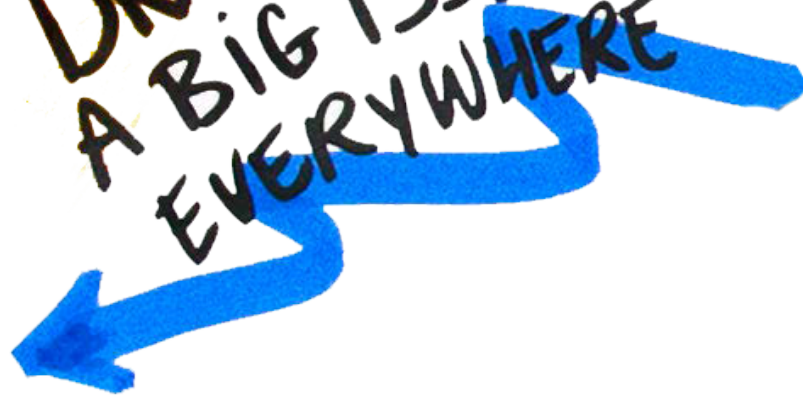




Quality

What
you've
told us:

DRAINAGE IS
A BIG ISSUE
EVERYWHERE



help keep fields level

- Improvements needed at most fields
- Challenges of subsurface conditions in John Hendry Park





Accessibility

What you've told us:



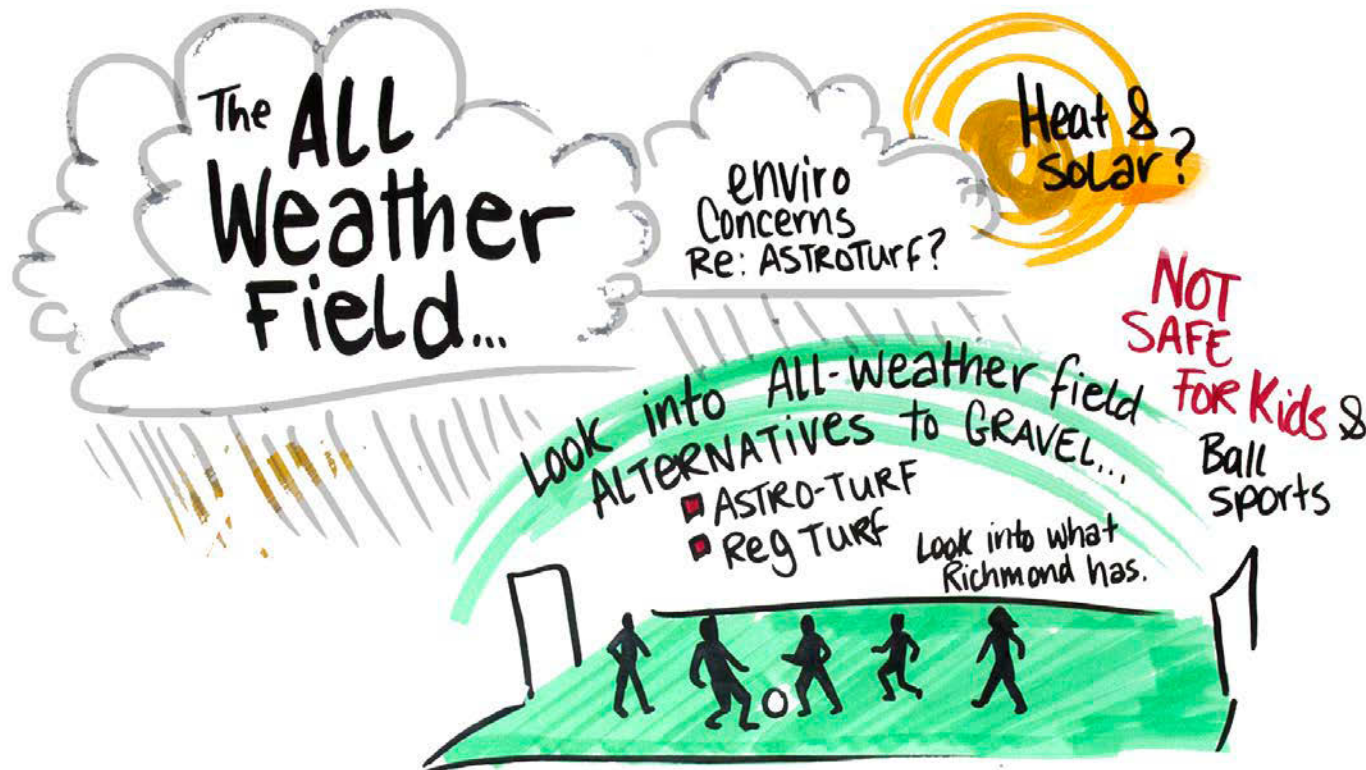
- Need to improve accessibility for both fields and play
- Mixed opinions of surfacing materials





Turf Alternatives

What you've told us:



- Mixed opinions on pros/cons of synthetic turf
- Consider idea of limited synthetic turf in the park



Balance

What you've told us:



“I value
informal
Play”

- Maintain flexible open space
- Protect existing natural areas
- Look at trade-offs where existing trees could be affected



Fields & Play Option 1

THIS OPTION IS AN INITIAL DRAFT FOR DISCUSSION AT THE DEEP DIVE SESSION ONLY. NO FINAL DECISIONS HAVE BEEN MADE. ALL DIRECTIONS WILL BE REVIEWED DURING FUTURE STEPS.

LEGEND

- BC PARKWAY TRAIL (EXISTING)
Designated bike route. Final location TBD subject to engineering review
- PRIMARY PEDESTRIAN TRAIL
Final location TBD

EXISTING GRASS MINI-FIELDS REMAIN WITH UPGRADES, SOFTBALL DIAMOND RELOCATED TO NE

- Softball uses moved to improved fields in NE & SW
- Improved field quality / size, reduces adjacency to off-leash area
- Mini-field quality improvements
- Supports potential for new pathway connections on perimeter

EXISTING ALL WEATHER FIELD CONVERTED TO SYNTHETIC TURF

- Size as existing
- Lighting remains
- Softball uses relocated to upgraded SW and NE fields
- New pathway connections on west and south sides



Example: Hillcrest Park

OUTDOOR PING PONG COURTS IN PLAZA



EXPANDED YOUTH ZONE NEAR COURTS

- Expanded plaza space with variety of seating options and activities that appeal to youth
- Activities and amenities identified in consultation with youth

Example: seating options

EXISTING COURTS REMAIN WITH UPGRADES

- Minor improvements
- Additional lining for pickleball

EXISTING SOUTH SOFTBALL DIAMOND REMAINS WITH UPGRADES

- Maintained in current location
- Field leveling and functional improvements

OFF-LEASH AREA
(extents approximate, design TBD)

EXISTING PLAYGROUND TO REMAIN

ENHANCED BEACH

UPGRADED COMBINED GRASS MULTI-USE FIELDS

- Multi-use grass field upgraded to address drainage issues (potential re-orientation to be explored)
- Large (300' outfield) softball diamond added with overlapping outfield (skinned infield outside multi-use area of play)
- ~40 new parking stalls on Templeton Dr
- Regrading required (retaining wall at east likely)
- Potential to increase vegetated perimeter to help mitigate noise and provide additional habitat
- Loss of +/- 15 trees (replacements required)

UPGRADED FIELD HOUSE & PUBLIC WASHROOMS

- In partnership with user groups

ENHANCED LITTLE LEAGUE FIELDS

- Field layouts as existing, with continued improvements to enhance quality and accessibility
- Upgrades to field 3 for playability

NEW SOUTH BEACH ADVENTURE PLAY ZONE

- Adventure play (with natural character)
- Opportunities for range of ages, including more challenging play than Community Centre playground
- Splash play area
- Potential zip line

Examples: Natural-character play equipment, splash zone, integrated circulation and seating areas, zip line



NEW SOUTH BEACH HOUSE

- Larger washroom / changerooms
- Updated concession
- Moved to south end of lake with large patio space overlooking beach
- Integrated storage and maintenance

Example: Park building with covered patio seating



NEW SAND VOLLEYBALL COURTS

- 2 new courts near beach area



FUTURE STORMWATER / BIODIVERSITY AREA

 = FLEX-USE LAWN AREAS

- Grassy open spaces for uses such as:
 - Picnicking
 - Grass volleyball
 - Events and gatherings
 - Individual or group fitness
 - Unstructured play + more
 - Minor upgrades such as leveling or reseed

Example: grass volleyball



Fields & Play Option 2

THIS OPTION IS AN INITIAL DRAFT FOR DISCUSSION AT THE DEEP DIVE SESSION ONLY. NO FINAL DECISIONS HAVE BEEN MADE. ALL DIRECTIONS WILL BE REVIEWED DURING FUTURE STEPS.

LEGEND

- BC PARKWAY TRAIL (EXISTING)
Designated bike route. Final location TBD subject to engineering review
- PRIMARY PEDESTRIAN TRAIL
Final location TBD

1 EXISTING GRASS MINI-FIELD REMAINS, SOFTBALL RE-ORIENTED AND IMPROVED

- Softball re-oriented to address adjacency challenges, improve sun direction
- Improved field quality
- 1 mini-field removed (uses accommodated on improved NE field and all-weather field)
- Supports potential for new pathway connections on perimeter

EXISTING ALL WEATHER GRAVEL FIELD REMAINS

- No softball uses permitted due to safety concerns
- Lighting remains

ACTIVITY ZONE IN UPPER ENTRY AREA

- Introduction of new activities such as:

- Ping pong tables
- Chess tables
- Wi-fi zone
- Power outlets
- Covered seating options
- Rotating art displays
- Music zone
- Other

ENHANCED COURTS

- South tennis court re-oriented north-south
- Half court with practice wall added
- Additional lining for pickleball
- Existing sport courts retained with minor upgrades

UPGRADED & EXPANDED SOUTH SOFTBALL DIAMOND

- Shifted north to provide additional space (300' outfield)
- Trails re-oriented to allow space
- Field leveling and improvements
- Loss of +/- 10 trees (replacements required)

OFF-LEASH AREA
(extends approximate, design TBD)

EXISTING PLAYGROUND TO REMAIN

ENHANCED BEACH

UPGRADED GRASS MULTI-USE FIELDS

- Accommodates 1 full-size / 2 mini-fields
- Improved sand base, leveling, drainage, irrigation to increase playability and seasonal use
- Potential to increase vegetated perimeter to help mitigate noise and provide additional habitat
- Loss of +/- 9 trees (replacements required)

UPGRADED FIELD HOUSE & PUBLIC WASHROOMS

- In partnership with user groups

ENHANCED LITTLE LEAGUE FIELDS

- Field layouts as existing, with continued improvements to enhance quality and accessibility
- Upgrades to field 3 for playability

NEW SOUTH BEACH NATURE PLAY ZONE

- Expanded play area with nature-based play focus
- Increased planting and vegetation to support natural character
- Opportunities for creative and imaginative play throughout, interactive elements, etc.
- Incorporation of hands-on water elements such as a lazy river

Examples: Lazy river water play, willow fort, stepping logs, play forest

NEW SOUTH BEACH HOUSE

- Larger washroom / changerooms
- Concession
- In similar location to existing building with patio space overlooking beach
- Integrated storage and maintenance

Example: Enhanced washroom with natural character

FUTURE STORMWATER / BIODIVERSITY AREA

= FLEX-USE LAWN AREAS

- Grassy open spaces for uses such as:
- Picnicking
- Grass volleyball
- Events and gatherings
- Individual or group fitness
- Unstructured play + more
- Minor upgrades such as leveling or reseeding



Fields & Play Option 3

THIS OPTION IS AN INITIAL DRAFT FOR DISCUSSION AT THE DEEP DIVE SESSION ONLY. NO FINAL DECISIONS HAVE BEEN MADE. ALL DIRECTIONS WILL BE REVIEWED DURING FUTURE STEPS.

LEGEND

 **BC PARKWAY TRAIL (EXISTING)**
Designated bike route, Final location TBD subject to engineering review

 **PRIMARY PEDESTRIAN TRAIL**
Final location TBD

NW FIELDS AS EXISTING

- » All fields remain with minor upgrades to improve quality
- » New pathway connections on perimeter

EXISTING ALL WEATHER FIELD CONVERTED TO EVENT / OPEN SPACE

- » Current field uses relocated to alternate improved fields
- » Option for expanded event space near Community Centre
- » Additional unprogrammed open space

Example: Expanded event / flex space



EXPANDED COURTS AREA

- » South tennis court re-oriented north-south
- » 1-2 new designated pickleball courts added (larger than existing)
- » Multi-sport court re-oriented and potential addition of second court
- » Enhancements to incorporate seating and spectating spaces

Example: Courts with integrated seating / spectating area



UPGRADED & EXPANDED SOUTH SOFTBALL DIAMOND

- » Shifted north to provide additional space (300' outfield)
- » Trails re-oriented to allow space
- » Field leveling and improvements
- » Loss of +/- 10 trees (replacements required)
- » Potential to increase vegetated perimeter to help mitigate noise impacts and provide new habitat



OFF-LEASH AREA
(extents approximate, design TBD)

EXISTING PLAYGROUND TO REMAIN

ENHANCED BEACH

UPGRADED GRASS MULTI-USE FIELDS

- » Accommodates 1 full-size / 2 mini-fields
- » Improved sand base, leveling, drainage, irrigation to increase playability and seasonal use
- » Potential to increase vegetated perimeter to help mitigate noise and provide additional habitat
- » Loss of +/- 9 trees (replacements required)

UPGRADED FIELD HOUSE & PUBLIC WASHROOMS

- » In partnership with user groups

ENHANCED LITTLE LEAGUE FIELDS

- » Field layouts as existing, with continued improvements to enhance quality and accessibility
- » Upgrades to field 3 for playability

UPDATED SOUTH BEACH PLAY ZONE

- » Moderately expanded play area with adventure play equipment for all ages, including more challenging play than the Community Centre playground
- » Located in approximately same location as existing playground

Examples: Spinner, climber, mega slide, balance equipment



NEW SOUTH BEACH HOUSE

- » Larger washroom / changerooms
- » Updated concession
- » In similar location to existing building with patio space overlooking beach
- » Integrated storage and maintenance

Example: Covered picnic seating overlooking beach



FUTURE STORMWATER / BIODIVERSITY AREA

 = FLEX-USE LAWN AREAS

- » Grassy open spaces for uses such as:
 - » Picnicking
 - » Grass volleyball
 - » Events and gatherings
 - » Individual or group fitness
 - » Unstructured play + more
 - » Minor upgrades such as leveling or reseeding

Example: picnicking



Your Ideas

TEMPLATE LEGEND



WHAT ACTIVITIES TYPICALLY HAPPEN HERE?

MULTI-USE FIELDS

LARGE (70M X 110M):

- » Rugby
- » Football
- » Gaelic Football
- » Adult Soccer
- » Youth Soccer
- » Ultimate Frisbee
- » Events

MEDIUM (60M X 80M):

- » Youth Soccer
- » Casual Field Use
- » Events

MINI (35M X 55M):

- » Youth Soccer
- » Casual Field Use
- » Events

ALL-WEATHER FIELDS

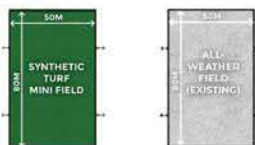
SYNTHETIC TURF (50M X 80M)

- » Youth Soccer (U12 and under)
- » Rugby*
- » Events
- » Fencing
- » Lighting

EXISTING GRAVEL (50M X 80M):

- » Youth Soccer (U12 and under)
- » Rugby*
- » Events
- » Lighting

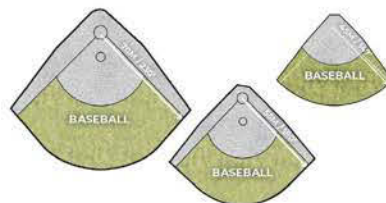
* Field size would only support recreational play



LITTLE LEAGUE BASEBALL FIELDS

OUTFIELD DIMENSIONS INDICATED ON TEMPLATE

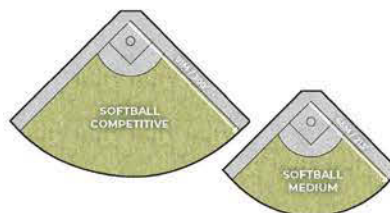
- » Youth Baseball (13U)
- » Youth Baseball (11U)
- » Youth Baseball (9U)



SOFTBALL FIELDS

OUTFIELD DIMENSIONS INDICATED ON TEMPLATE

- » Softball
- » Slo-pitch
- » Fastball
- » Kickball



TEMPLATE LEGEND



WHAT ACTIVITIES TYPICALLY HAPPEN HERE?

COURTS

BEACH VOLLEYBALL (BV)

- » Beach Volleyball
- » Sand Surface

MULTISPORT COURT (MSC)

- » Basketball
- » Floor Hockey
- » Community Centre Programming

PICKLEBALL (P)

- » Pickleball
- » Community Centre Programming



PING PONG (PP)

- » Ping Pong

TENNIS COURT (T)

- » Tennis
- » Pickleball (with lining)
- » Community Centre Programming

PLAY AREAS

PLAY EQUIPMENT (PE)

- » Play Structures (climbing, swinging, sliding)
- » Range of ages

SPLASH PAD (SPLASH)

- » Conventional Water-play
- » Spray Features

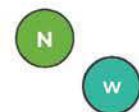


NATURE PLAY (N)

- » Nature Play (boulders, logs, forts)
- » Free play
- » Range of ages
- » Integrated Natural Areas

NATURAL WATER PLAY (W)

- » Small River Channel
- » Hands-on Water Pump
- » Integrated Natural Areas



FIELD, COURT AND PLAY AREA AMENITIES





LET'S EAT! Farmers Market



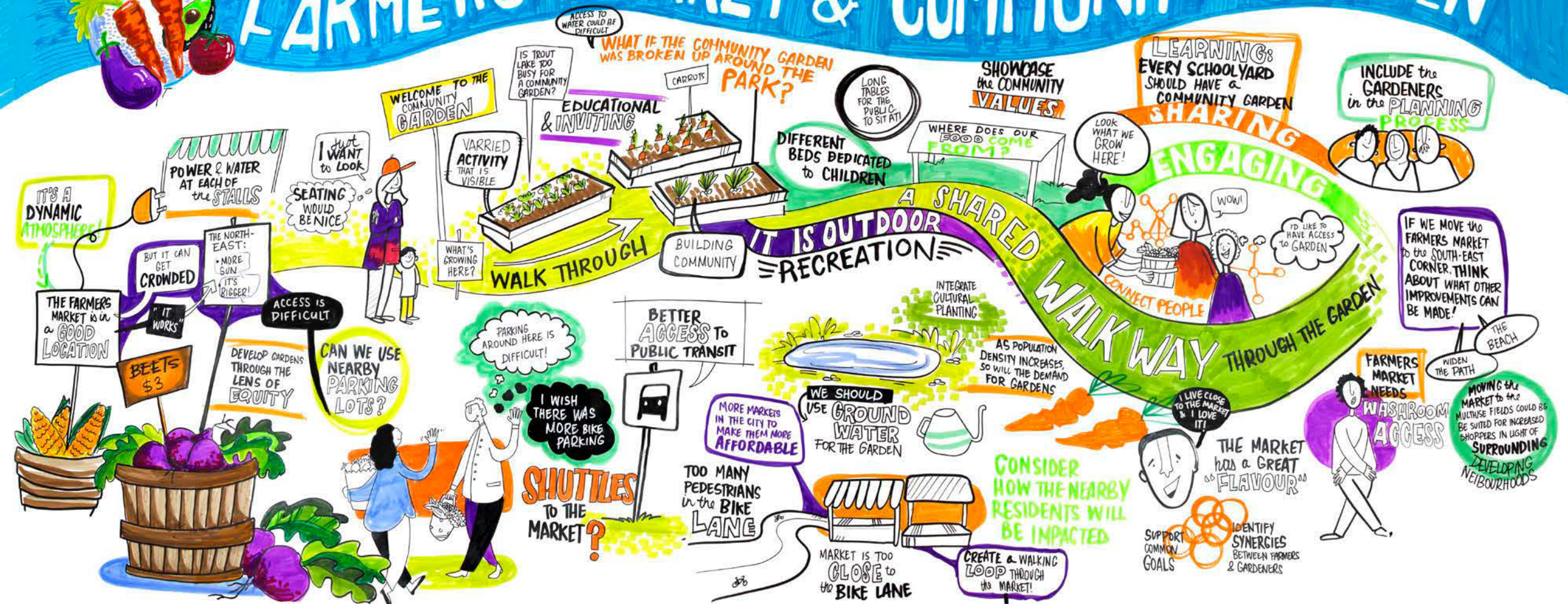


WHAT WE'VE HEARD ABOUT THE Farmers Market

- 72% of survey participants go to the market
- Many people like the current location, but there are some challenges
- Many are not concerned about specific location, just that it remains in JHP



FARMERS MARKET & COMMUNITY GARDEN



John Hendry Park Workshop - November 19, 2019

Live graphic recording:

Erica Bota for:



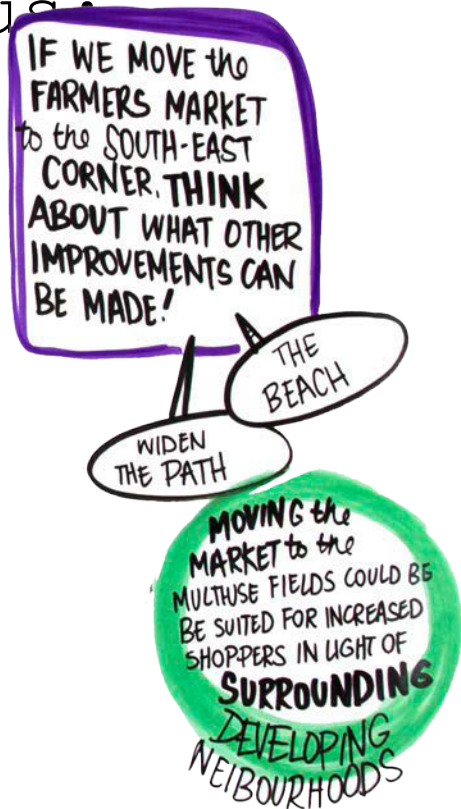
JOHN HENDRY PARK
MASTER PLAN





Location

What you've told us:



- Mixed opinions about locations
- Openness to consider alternatives





Adjacencies

What you've told us:

CONSIDER
HOW THE NEARBY
RESIDENTS WILL
BE IMPACTED

TOO MANY
PEDESTRIANS
in the **BIKE**
LANE

MARKET IS TOO
CLOSE to
the **BIKE LANE**

CREATE a WALKING
LOOP THROUGH
the MARKET!

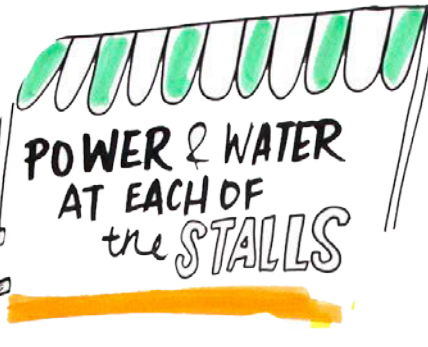
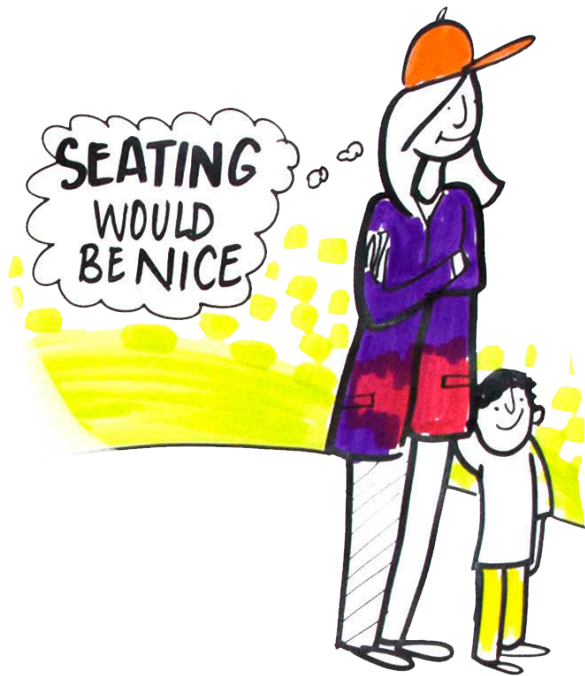
- There are some existing conflicts that could be improved
- Are there locations that could reduce potential for conflicts?





Amenities

What you've told us:



- How can different locations capitalize on proximity to existing amenities?
- What new amenities are needed?





Access

What you've told

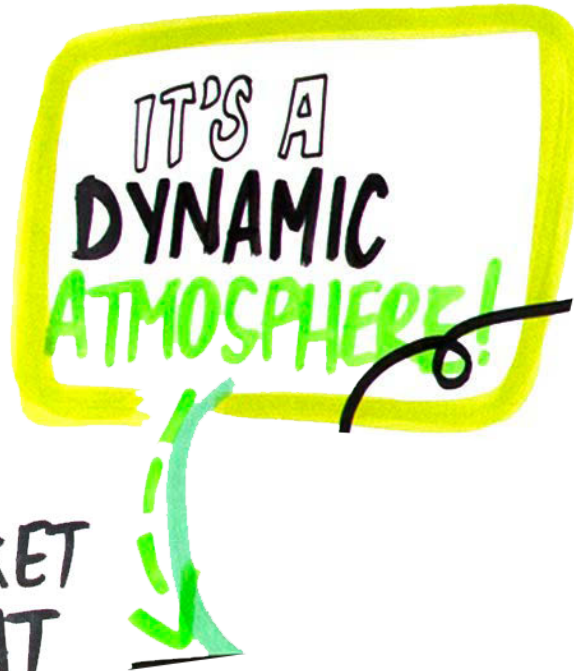


- Access considerations are important
- Parking, transit, cycling all play a role
- New ideas like shuttles



Feeling

What
you've
told me



- Keep it attractive and exciting
- Need to think about the experience of different locations



Famers Market

Location Options

THIS MAP SHOWS "TEST" LAYOUTS FOR THE THREE LOCATION OPTIONS UNDER CONSIDERATION FOR THE FUTURE FARMERS MARKET. THESE "TESTS" ARE DONE FOR REFERENCE ONLY TO BETTER UNDERSTAND SPATIAL CONSIDERATIONS. ACTUAL MARKET LAYOUTS WOULD VARY AND WOULD BE DETERMINED IN CONSULTATION WITH OPERATORS AT A FUTURE TIME. EACH LAYOUT IS INDICATIVE OF THE APPROXIMATE SPACE REQUIREMENTS FOR 70 STALLS AND 5 FOOD TRUCKS (CAPACITY OF CURRENT MARKET) FOR COMPARISON PURPOSES.



KEY CRITERIA	WHAT WE'VE HEARD	QUESTION
ADJACENCIES		
COMPATIBLE ADJACENT PARK USES	<ul style="list-style-type: none"> » Different locations could decrease or increase potential for conflicts between the market and other park activities 	<ul style="list-style-type: none"> » How compatible do you feel this location is with other nearby park uses (e.g., cycle route, off-leash area, field uses, community centre uses, play, etc.)?
PROXIMITY TO PUBLIC WASHROOMS	<ul style="list-style-type: none"> » People prioritized better access to washrooms for market visitors » Public washrooms are anticipated in three locations: <ul style="list-style-type: none"> » Community Centre (existing) » South Beach Building (upgraded) » North End (future, in partnership with field uses) 	<ul style="list-style-type: none"> » How do you feel this option supports washroom access (either existing or future)?
PROXIMITY TO RELATED AMENITIES	<ul style="list-style-type: none"> » People would like to have more places to sit, picnic, play, or relax when visiting the market 	<ul style="list-style-type: none"> » How do you feel this option supports access to related park amenities?
IMPACTS TO NEIGHBOURS	<ul style="list-style-type: none"> » High activity at the market could affect people living nearby 	<ul style="list-style-type: none"> » How do you think this location does at minimizing potential impacts to neighbouring residences?
ACCESS		
PARKING	<ul style="list-style-type: none"> » There is a need to use existing parking efficiently » The current market occupies a full parking lot, making this unavailable to park visitors during market times 	<ul style="list-style-type: none"> » How do you feel this option supports parking in the park?
ACCESSIBILITY	<ul style="list-style-type: none"> » It is important that visitors of all ages and abilities are able to get to the market and move around it 	<ul style="list-style-type: none"> » How do you feel this option supports accessibility for all?
PUBLIC TRANSIT ACCESS	<ul style="list-style-type: none"> » Many market visitors use transit and there is a desire to encourage more transit use 	<ul style="list-style-type: none"> » How do you think this option will affect people's choices to use transit?
CYCLING ACCESS	<ul style="list-style-type: none"> » Some visitors come by cycle and there is a desire to encourage more cycling 	<ul style="list-style-type: none"> » How do you think this option will affect people's choices to cycle?
SIZE AND FEEL		
CHARACTER	<ul style="list-style-type: none"> » People value the current character and feel of the market 	<ul style="list-style-type: none"> » How do you think this location will "feel" for visitors to the market?
POTENTIAL FOR FUTURE EXPANSION	<ul style="list-style-type: none"> » In the future, there may be a desire for additional market space as the neighbourhood grows 	<ul style="list-style-type: none"> » Looking at the area around the option, can you envision ways the market could grow?
MARKET CIRCULATION & ACCESS FOR VENDORS	<ul style="list-style-type: none"> » Vendors need to be able to efficiently access the area to set-up and take down 	<ul style="list-style-type: none"> » How do you feel this option can help efficient set-up with minimal disruption to other park uses or neighbouring residences?
OTHER CRITERIA		<ul style="list-style-type: none"> » Are there other criteria important to consider when recommending a final market location?



LET'S EAT! Community Garden



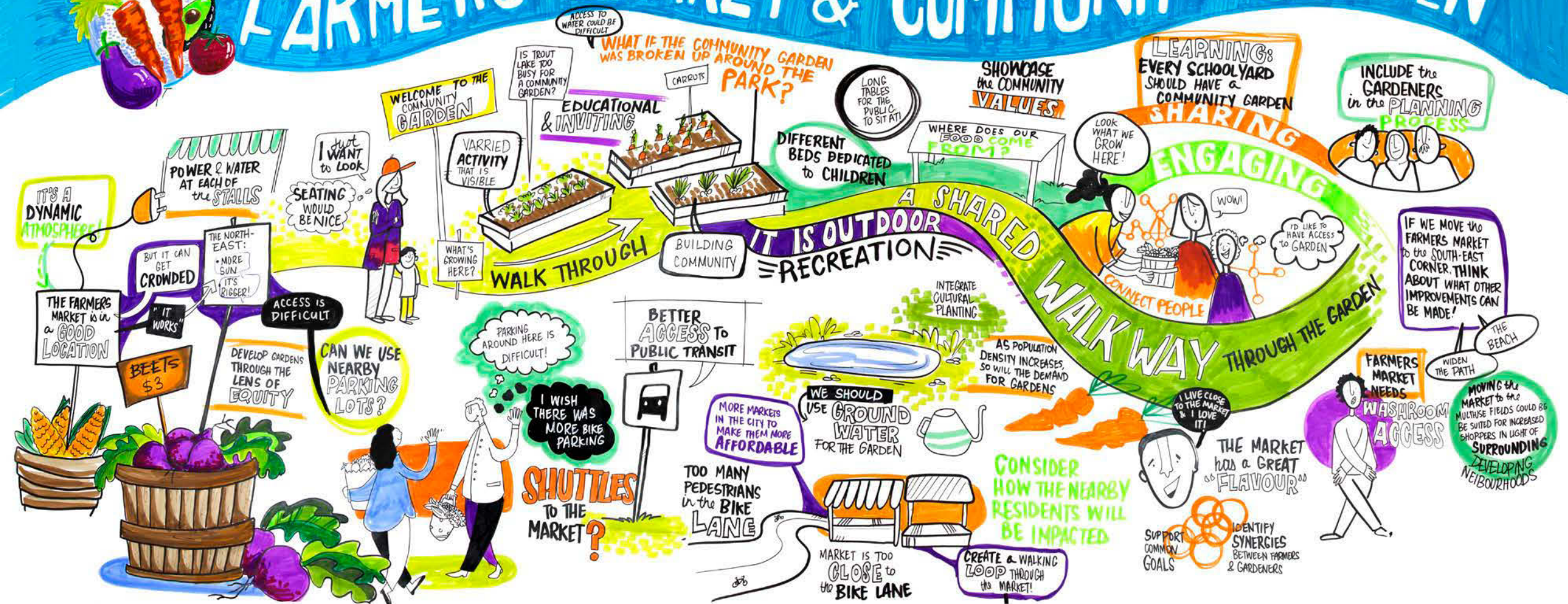


WHAT WE'VE HEARD ABOUT THE Community Garden

- 67% of survey participants support a community garden in JHP (25% were neutral)
- Southeast corner of the park appears favourable
- Primary concerns are around ensuring the space is inclusive



FARMERS MARKET & COMMUNITY GARDEN



John Hendry Park Workshop - November 19, 2019

Live graphic recording:
Erica Bota for:



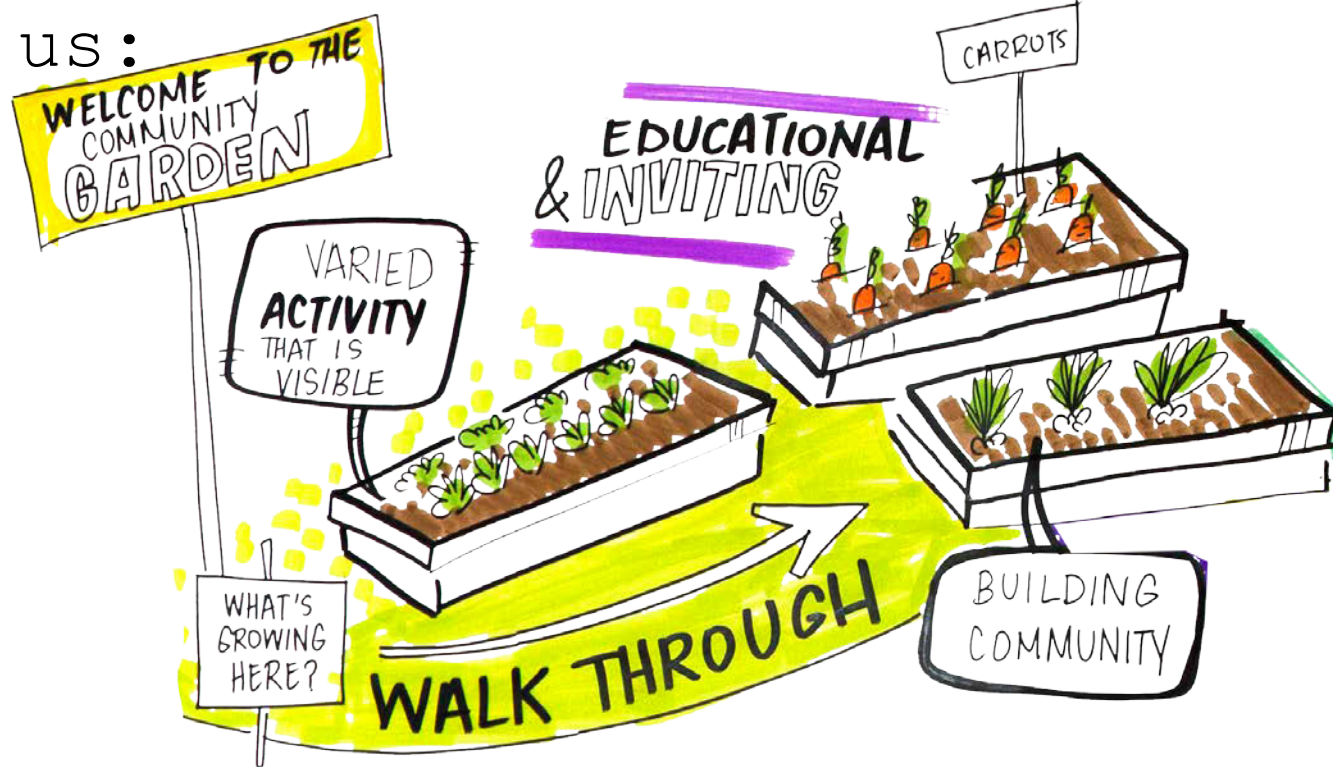
JOHN HENDRY PARK
MASTER PLAN





Welcome & Inviting

What you've told us:



- Variety of spaces
- Welcoming and inclusive atmosphere
- Part of the park, not separate





Thoughtful Circulation

What you've told
us:



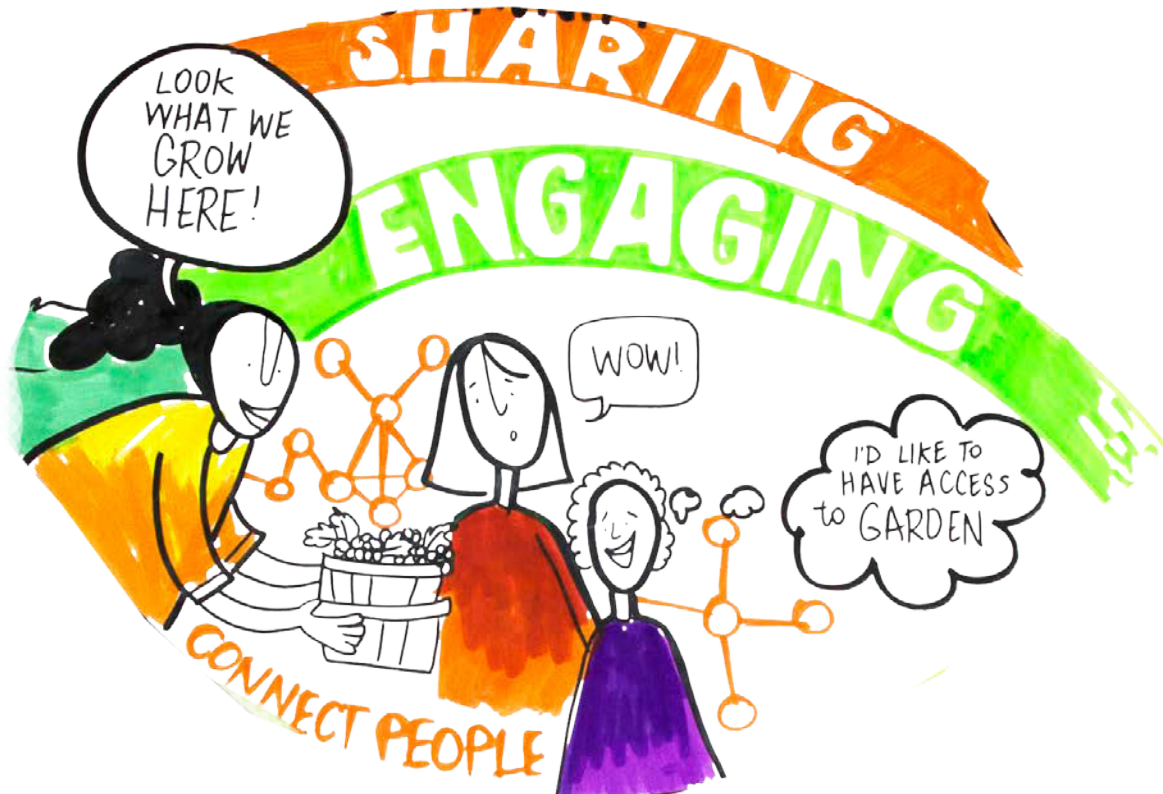
- Walking trails through
- Opportunities for exercise and feeling of community





Incorporate Learning

What you've told
us:



- Share knowledge
- Connect people
- Inspire youth





Amenities that Invite

What you've told

us •



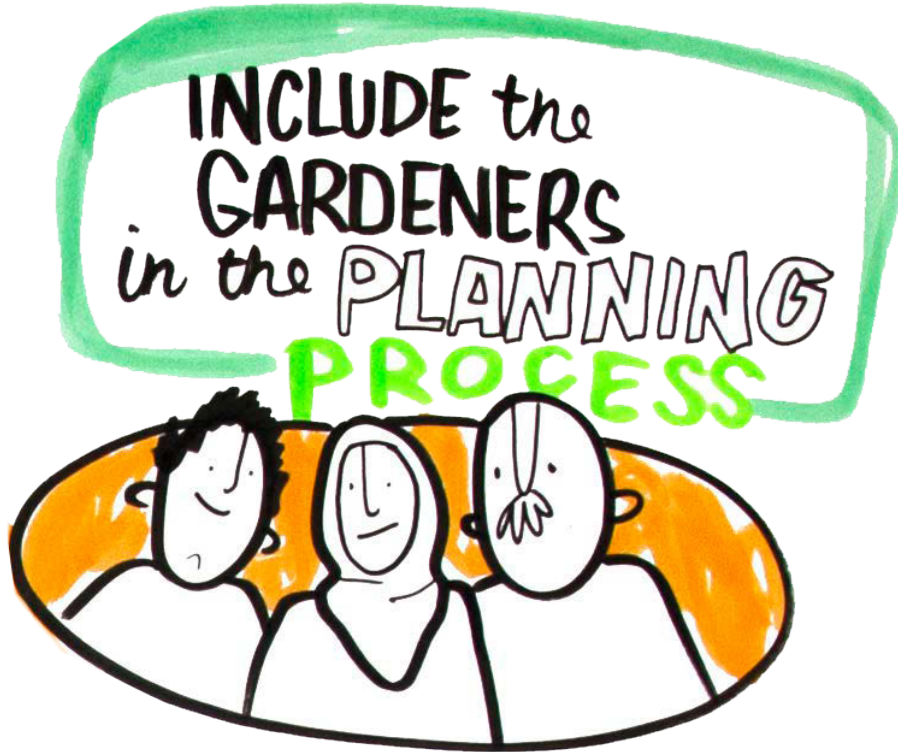
- Places for people to gather
- Gardens for education, sharing, and learning





Plan Together

What you've told
us:



- Work together to come up with a plan that works



Community Gardens in Parks



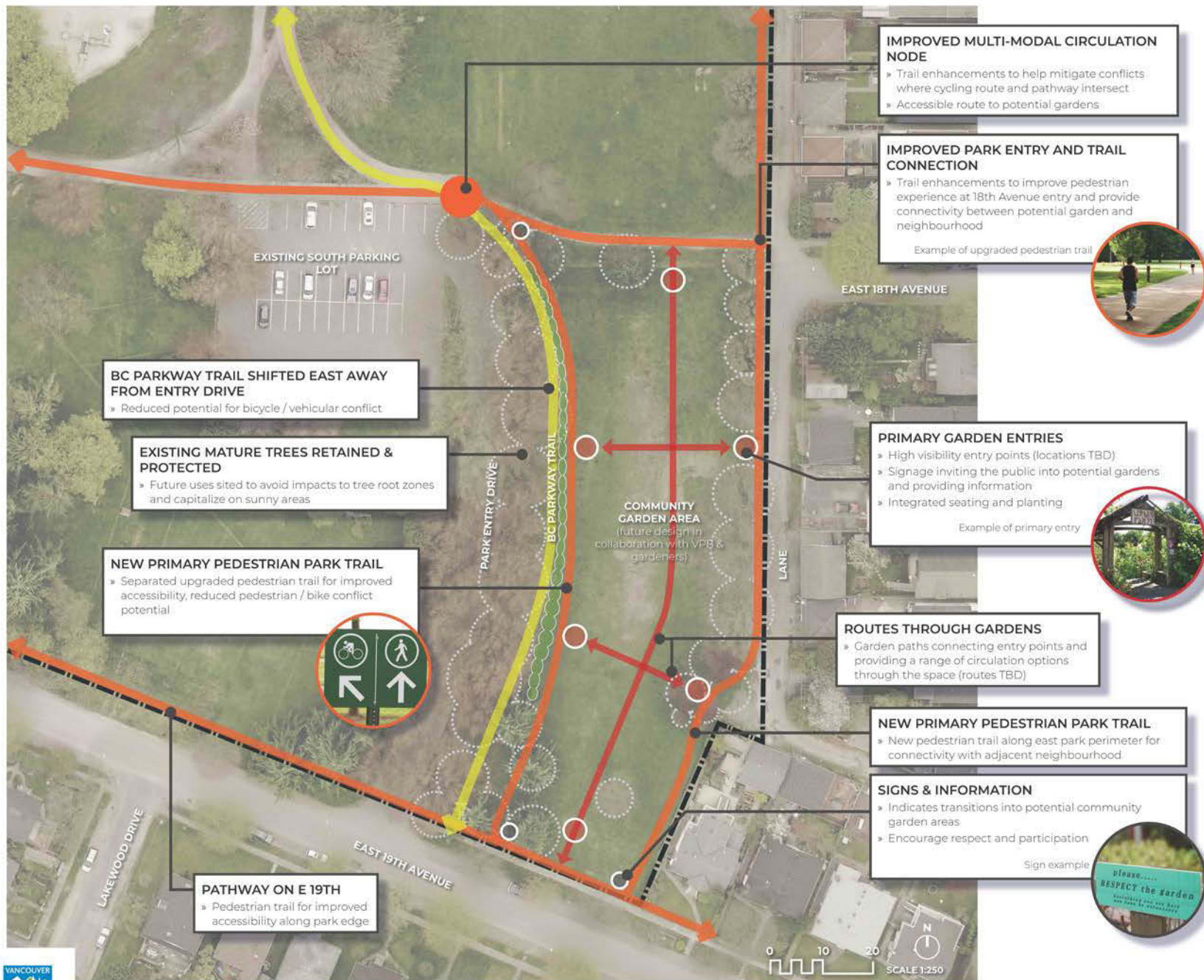
Community Gardens in Parks



Community Gardens in Parks















Community Garden Framework



THIS FRAMEWORK IS AN INITIAL DRAFT FOR DISCUSSION AT THE DEEP DIVE SESSION ONLY. ALL DIRECTIONS WILL BE REVIEWED DURING FUTURE STEPS.

Your Ideas

TEMPLATE	COMMUNITY GARDEN ELEMENT	ELEMENT IMAGE
	ACCESSIBLE GARDEN PLOTS <ul style="list-style-type: none"> » 1.2M X 3M (sized for accessibility) » Raised beds » 1.5M path with compacted surface surrounding for wheelchair accessibility 	
	AT-GRADE GARDEN PLOTS <ul style="list-style-type: none"> » 2M X 3M » 1.5M wood-chip path at edge » At-grade planting 	
	SHARED PLOTS <ul style="list-style-type: none"> » Larger spaces for garden members to work together to grow larger crops 	
	EDUCATIONAL / COMMUNITY PLOTS <ul style="list-style-type: none"> » Gardens dedicated for use by school, health, or community groups 	
	ORCHARD TREES <ul style="list-style-type: none"> » Apples » Cherries » Plums » Others! 	
	SHED / STORAGE BUILDING <ul style="list-style-type: none"> » Space for tools » Seed storage » Integrated water barrels / rainwater collection 	

TEMPLATE	COMMUNITY GARDEN ELEMENT	ELEMENT IMAGE
	CHILDREN'S PLOTS <ul style="list-style-type: none"> » Raised beds for digging » Sensory play » Child-safe tools 	
	APIARY <ul style="list-style-type: none"> » Secured area for beehives » Pollinator planting » Educational signage 	
	BENCHES <ul style="list-style-type: none"> » Seating for public and gardeners 	
	COMMUNAL PICNIC AREA / GATHERING PLACE <ul style="list-style-type: none"> » Picnic Tables » Space for Gathering » Space for Potting / Stationary Work 	
	COMPOST <ul style="list-style-type: none"> » Rotating Compost Bins » Managed by gardeners 	
	SIGNAGE <ul style="list-style-type: none"> » Entry Kiosk Sign » Perimeter / Boundary Sign » Educational Signage 	
	WATER FOUNTAIN / HOSE <ul style="list-style-type: none"> » Hose connection » Drinking water 	

Focus Group Format

We will be breaking out into 2 groups:

- Playing Fields, Courts and Playgrounds
- Farmers Market & Community Garden

You can stay with one group for the entire session, or you can roam between them.



Focus Group Format Playing Fields

Questions for each option:

- 1) What feature of this option do you like most and why?
- 2) What feature of this option do you like least and why?
- 3) Which of the identified amenities is most important to you, and what general area would be ideal for you?



Focus Group Format

Farmers Market

We will be rating each option based on criteria by asking:

- 1) Using the flashcards to rate between 1 and 5 stars, how well does this location meet each criterion?
- 2) Why?
- 3) What else do you think is important to consider when choosing the location of the Farmers Market?



Focus Group Format Community Gardens

Questions:

- 1) What do you most like about the idea of having a community garden in this location?
- 2) What concerns you most about the idea of having a community garden in this location?
- 3) If the garden moves forward, what elements or amenities could be included to create a community space that is open and welcome to all park users?



Next Steps

Dec-Jan

The project team will review all feedback and work to develop a single option for the off-leash area (and other deep dive topics).

The project team will work to combine and align all recommendations within the broader park context.

Late Feb

A workshop will be hosted to discuss emerging consolidated Master Plan directions, with detailed recommendations on the off-leash area and all park components.

April

A final open house to review the proposed Master Plan and share feedback.



Thank You!

Please fill out a session evaluation before you go

Time is precious so thank you for spending yours with us.

