

JOHN HENDRY PARK

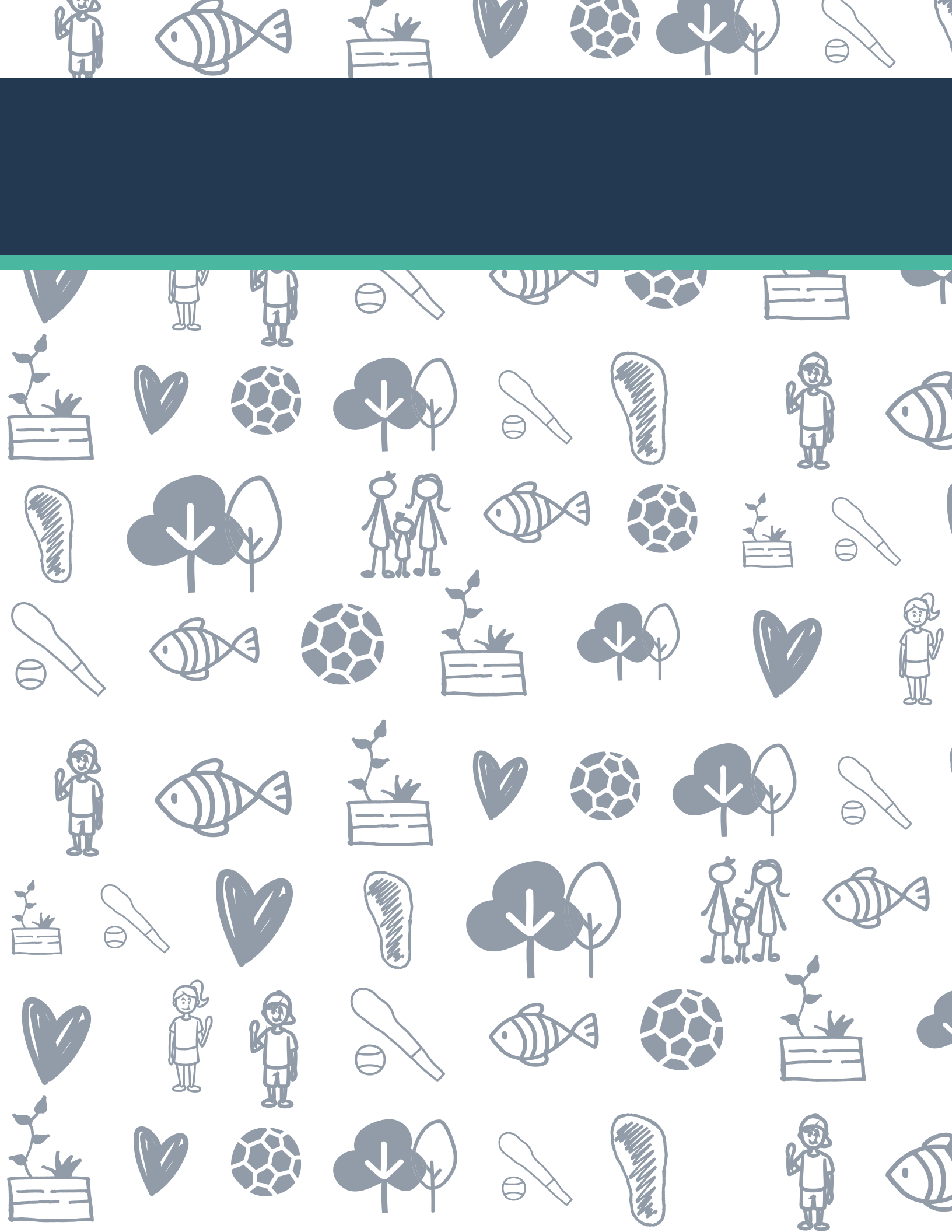
MASTER PLAN

Phase 1

Summarized Survey Findings Report

February 2020





CONTENTS

Engagement Program	4
Survey Promotion	4
Who Participated	5
What We Heard	6
Objectives	8
Recommendations	9
Group A: Review & Updating	10
Group B: Seeking Further Input	14
Topic: Circulation	
Topic: South Beach	
Group C: Developing New	20
Topic: Off-Leash Dog Area	
Topic: Farmers Market	
Topic: Community Garden	

ENGAGEMENT PROGRAM

In order to achieve the engagement program, a number of engagement opportunities have been planned over a nine-month period. One of these opportunities was a city-wide online survey posted on Talk Vancouver.

The following is a summary of the survey findings. This input has helped to inform engagement planning and will be one source of data the project team will consider in developing the master plan. The survey findings are one of many inputs the team will reference when drafting the plan.

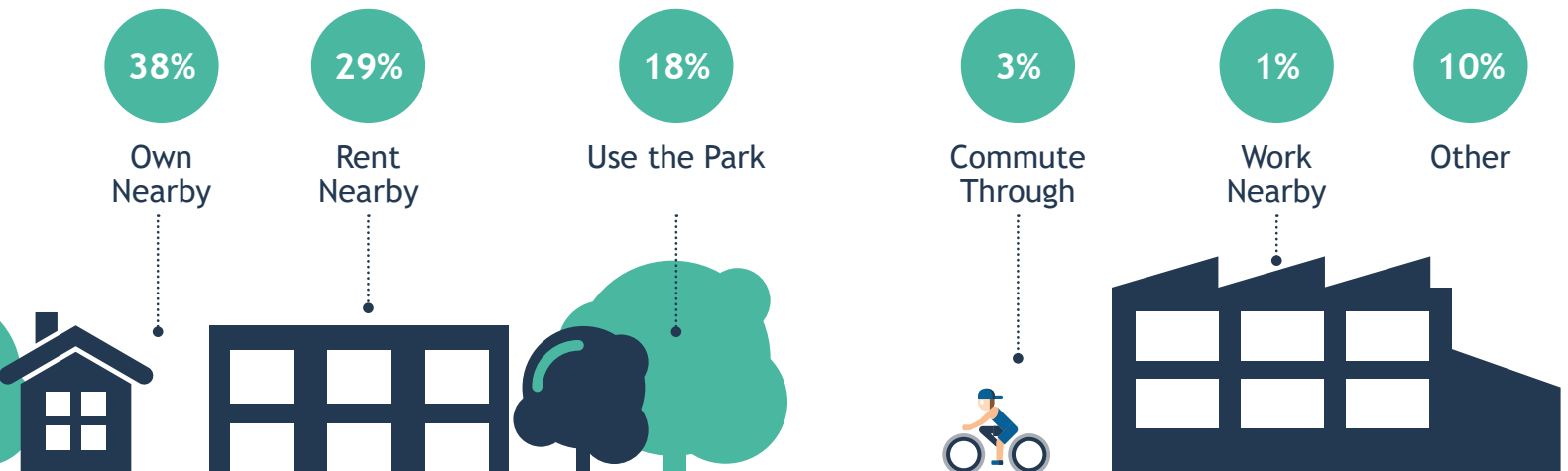
SURVEY PROMOTION

The online survey was posted on the Talk Vancouver online engagement platform from October 4-30, 2019. The survey took approximately 15 minutes to complete and consisted of 32 questions (17 closed and 15 open-ended) plus several demographic questions.

In total, 1,163 people completed the survey. Data analysis was performed on the results of all questions, and open-ended responses were themed and coded so that they also could be quantified.



WHO PARTICIPATED



WHAT WE HEARD

In 2015 a draft vision was developed for John Hendry Park. Respondents were asked to provide feedback on this draft vision statement so it could be updated.

Draft Vision Statement

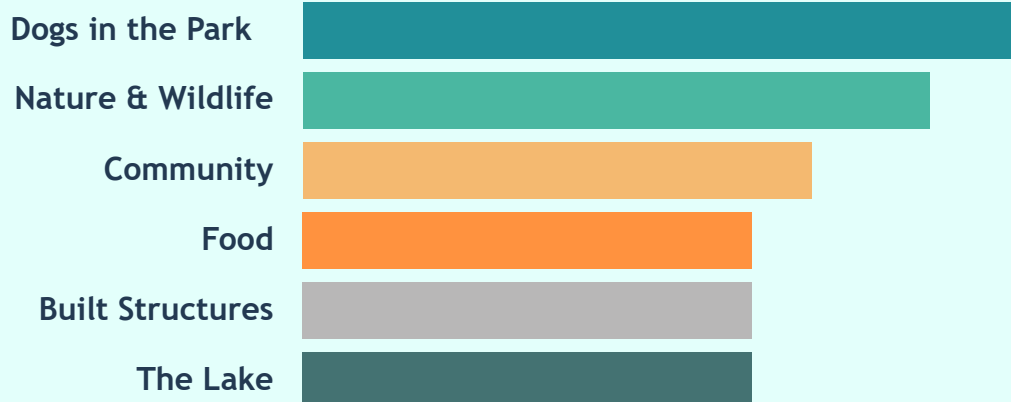
“John Hendry Park is an oasis encompassing Trout Lake and surrounding green space in the centre of East Vancouver. The park supports a healthy diversity of natural and urban wildlife, while also providing a space for recreation and relaxation. It is a place that connects nature and our community, bringing together people of a diversity of ages, backgrounds, and interests to pursue fun and celebrate life among friends, family, and neighbours. It is the heart of a healthy, green, and connected East Vancouver community.”

60%
Very Well

35%
Fairly Well

How well does this vision capture what you want John Hendry Park to become?

When asked to provide additional areas of improvement for the park and its vision, the top answers from members of the public were:





OBJECTIVES

In 2015, seven park objectives were developed to support the vision. The Park Board wanted to know whether these draft objectives were still relevant, and whether any key areas were missing.

Each of the 2015 objectives were rated in terms of importance.

97%

Protect natural spaces including Trout Lake

93%

Ensure ecological gains by protecting, adding & enhancing healthy ecosystems

90%

Support the Cities commitment to a Green Vancouver by incorporating current policies & guidelines

90%

Support safety & accessibility & create a park for all residents

88%

Provide diverse recreational options including a balance of space for active recreation & for quiet relaxation

76%

Create coherent park design, that flows & connects park users, facilities & natural areas

64%

Manage costs by making changes with capital, operational & maintenance consideration in mind

RECOMMENDATIONS

A NOTE ON THE DRAFT RECOMMENDATIONS REVIEW

In 2015, the draft John Hendry Park Master Plan identified a number of potential recommendations. We've reviewed these recommendations and initially put them into three groups.

The following sections discuss feedback on the 2015 draft recommendations, organized by groups:

Group



Review & Update

We think these recommendations are still relevant, but we want to confirm and identify tweaks to improve them. We won't spend too much time on these unless you tell us there's something important to revisit.

Group



Seek Further Input

We believe these recommendations are still important, but we want to review the details. We'll spend a bit more time on these and would like your ideas on what to improve.

Group



Develop New

We're starting from the top with these recommendations and want to spend time working with park users to come up with new recommendations that fit with current community interests.

GROUP A: REVIEW & UPDATE

The 2015 draft master plan included a number of recommendations with strong community support at that time. The hypothesis in 2019 was that these recommendations remained relevant and appropriate for the master planning process and likely resonated with the community. They will play an important role in the final master plan. The survey questions were designed to confirm this thinking, and to hear whether there were any suggestions for improvements.

Recommendations Focused on Improving the Experience of Park Users

There were six recommendations focused on improving the experience of park users:

- 1 Develop Additional Picnic Shelters. Keep the existing picnic shelter and add one to two more.
- 2 Provide Public Washroom Access at the North End of the Park. Work with stakeholders to develop a facility that has public washrooms, with potential to integrate other functions such as change rooms for field users.
- 3 Increase Park Amenities. Add benches, picnic tables, seating features, and drinking fountains throughout the park.
- 4 Install Boardwalks & Lake Lookouts in Key Locations. Provide opportunities for people to access lake views while minimizing impacts through replacement or improvement of boardwalks and lookouts.
- 5 Improve Wayfinding, Signage & Features. Add updated signage throughout the park including entry signs, maps, wayfinding, distance markers, code-of-conduct signs, and interpretive elements.
- 6 Improve Services to Accommodate Events. Provide power hook-ups and drinkable water connections to support special events.

48%
Strongly Agree

39%
Somewhat Agree

Do you generally agree or disagree with the recommendations to improve the experience of park users?

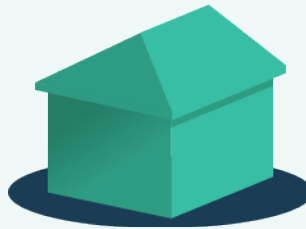
Overall, the main theme of the feedback was: “Keep the park as natural as possible”

When asked whether there were any other changes that should be made to improve the experience of park users, the main responses were as follows:



Dogs In the Park

- Clear Boundary
- Enforcement
- Large Area



Built Structures

- Washrooms
- Improved Concession



Nature & Wildlife

- Improve/Protect



Paths & Access

- Separated pedestrian and bike paths



Wayfinding

- Clearer Signage



Healthy Food

- Community Garden
- Concession Items

Recommendations Focused on Supporting and Enhancing Natural Habitat

There were four recommendation focused on supporting and enhancing natural habitat:

- 1 Improve Existing Natural Habitat Areas. Increase biodiversity and access to natural habitat by improving and expanding natural areas.
- 2 Create New Natural Areas. Add natural areas such as pollinator gardens, demonstration gardens that provide education, woodlands, and other natural areas.
- 3 Support Restoration of Trout Lake Bog. Support efforts to restore and expand the existing bog, a rare habitat in Vancouver.
- 4 Increase Trees & Include Interpretive Elements. Continue to add trees in strategic locations and consider tree identification signs so people know what each tree is.

72%
Strongly Agree

21%
Somewhat Agree

Do you generally agree or disagree with these natural habitat recommendations?

The top three feedback themes related to enhancing the natural habitat were:

9%

Wildlife Education
Signage

15%

On Leash Dog Areas/
Wildlife Protection
Areas

6%

Wildlife Only
Designated Areas



Recommendations Focused on Improving Water Resources

There were three recommendations focused on improving water resources:

- 1** Direct Internal Park Run-off to Trout Lake. Reduce rainwater flowing to the City's storm sewers by cleaning and directing park run-off into Trout Lake.
- 2** Integrate Neighbourhood Stormwater Daylighting & Management. Reconnect John Hendry Park to the water system by diverting and cleaning a portion of neighbourhood storm water in the park.
- 3** Trout Lake Water Quality Treatment & Monitoring. Take steps to improve water quality in Trout Lake to support recreational swimming and reduce closures.

65%
Strongly Agree

22%
Somewhat Agree

Do you generally agree or disagree with these water related recommendations?

The top three themes related to improving water resources were:

11%

Dog Water Impact

12%

Lake Water Quality

8%

Stormwater Capture & Filtration



GROUP B: SEEK FURTHER INPUT

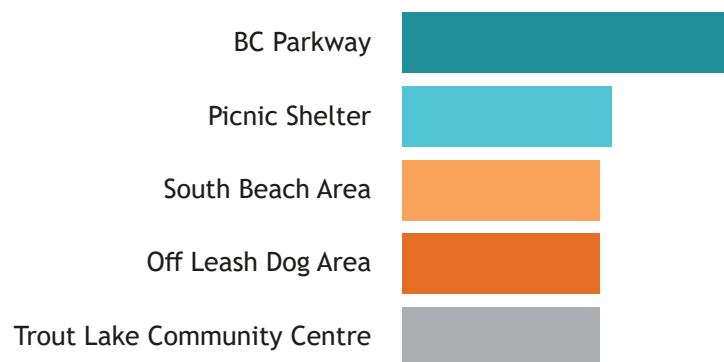
Some of the topics in the draft master plan needed further investigation to ensure they reflected diverse community interest and aligned with planning best practices. We have grouped these into two topic subjects: Circulation & South Beach.

Circulation

Improving how users move through the park was a priority in the previous planning process. Before the project team works to update these previous recommendations for circulation, stakeholders were invited to provide feedback, including suggesting what needs to be improved.

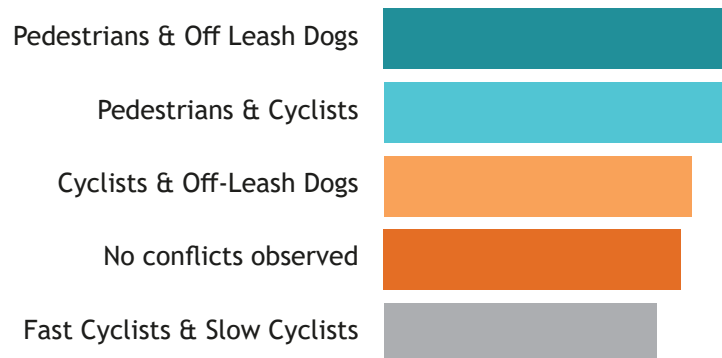
Missing Links: We have heard that some areas of the park need to be better connected. If you think any of these destinations needs to be better connected, check the box beside it and describe what you think is needed.

The top five areas we heard about were:



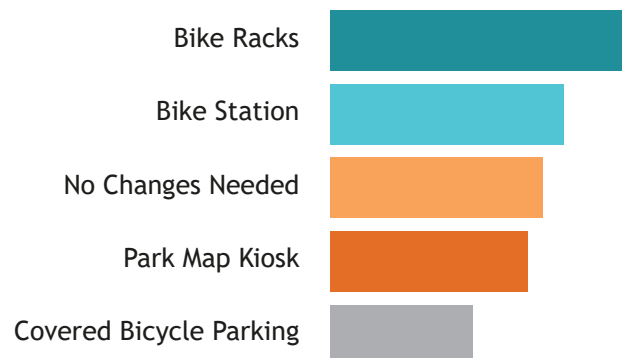
Conflict Areas: We have heard there are some areas where conflicts occur between park users as they move through the park. If you have observed conflicts between the user groups listed below, check the box beside it, describe what you have seen and where it has occurred.

The top five conflicts observed were:



Circulation Amenities: We have heard that more amenities could improve circulation or movement through the park. If you think any of the following circulation amenities should be considered, check the box beside and describe where.

The top five most important amenities were:



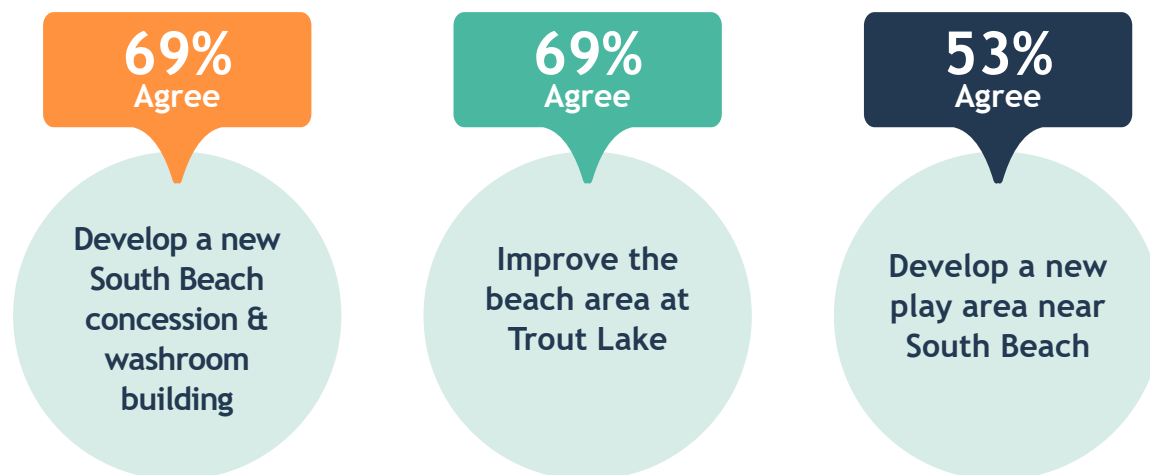
South Beach

In 2015, there were a number of suggestions for improving the area around the Trout Lake swimming area. The survey set out to confirm the main recommendations were still supported, and to gather feedback on what elements were seen as the highest priority for this area.

There were three recommendations focused on improving the South Beach area:

- 1 Develop a New South Beach Concession and Washroom Building. Prepare to replace the existing building (now reaching the end of its life) with a new, upgraded building.
- 2 Develop a New Play Area near the South Beach. Develop a new, integrated play area to replace the existing aging playground.
- 3 Improve the Beach Area at Trout Lake. Make enhancements to improve the quality of the beach (together with water quality improvements in Trout Lake to improve swimming).

Do you generally agree or disagree with these South Beach Area Recommendations.



Recommendation #1: Develop a New South Beach Concession & Washroom Building

Those who agree with this recommendation were asked to rank a list of features from 1 to 5:

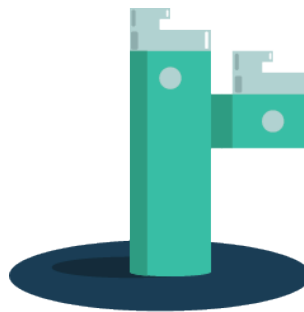
Please rank this list of possible Concession and Washroom Features in terms of importance, from most to least important.



Other elements that should be included, top three responses:



Improve Washroom
& Access



Water
Fountains

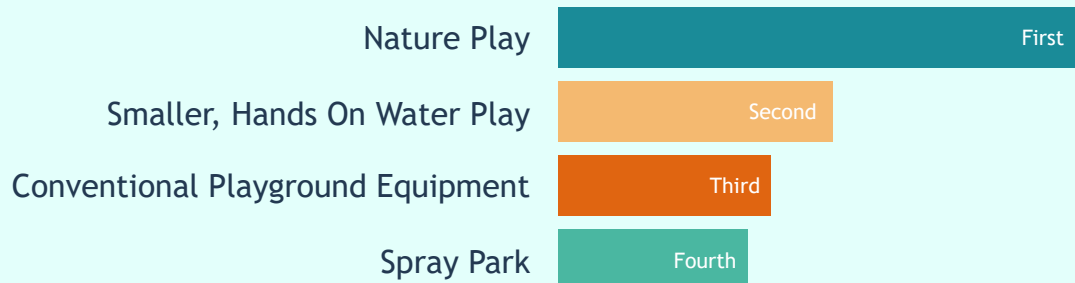


Healthier
Food Options

Recommendation #2: Develop A New Play Area at South Beach

Four possible elements for the play area were tested among those who agreed with the recommendation to develop a new play area near the South Beach.

Please rank this list of possible elements for the play area in terms of importance, from most to least important.



Additional comments from members of the public focused upon:

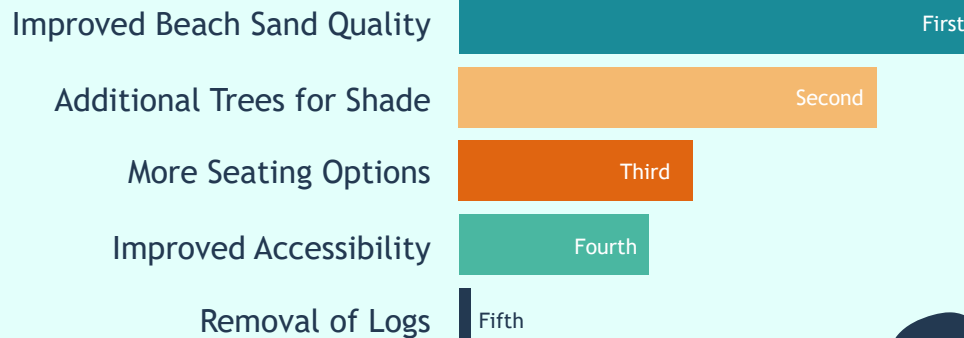
- Dislike the Spray Park Concept
- More Natural the Better
- Universal Accessibility
- Like the Spray Park Idea
- Add Shade Trees



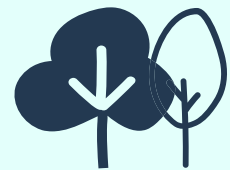
Recommendation #3: Improve the Beach Area at South Beach

For the recommendation to improve the beach area at Trout Lake, five possible features were tested among those who agreed with the overall recommendation.

Please rank this list of possible features for the Beach Area in terms of importance, from most to least important.



Only 1% supported removing the logs



Additional comments from members of the public focused upon:

- Keeping the logs
- Improvement of Water Quality
- Addressing Bird Waste
- Keeping the Park Natural
- Leaving the Park as it is



GROUP C: DEVELOP NEW

In 2015 there were a few complex topics. There have also been some emerging new topics that hadn't been previously considered. The Park Board wanted to work closely with participants on these topics to prepare new recommendations.

Topic: Off-Leash Dog Area

To begin a new conversation on John Hendry's off-leash dog area, there was a need to identify the criteria to be used when developing a recommendation. Several design guidelines from the "People, Parks and Dogs Strategy" need to be followed, including:

- 1 Increase park safety for all (dogs, dog-owners, non dog-owners)
- 2 Improve accessibility to/at the off-leash dog area
- 3 Maintain enough space for a destination off-leash dog area (minimum of 1.2 ha / 3.0 acres). NOTE: Vancouver Park Board has committed to maintain roughly the same off-leash area at John Hendry Park.
- 4 Provide adequate buffers or secure boundaries between the off-leash dog area and non-complimentary uses (e.g., environmentally sensitive areas, playing fields, multi-use paths)
- 5 Install new signs to clarify rules and educate users

We are interested in understanding your specific priorities for design and features at this location. Please select three potential features that are most important to you.



Additionally, members of the public also commented upon:

11%

Enclosed
Dog Area

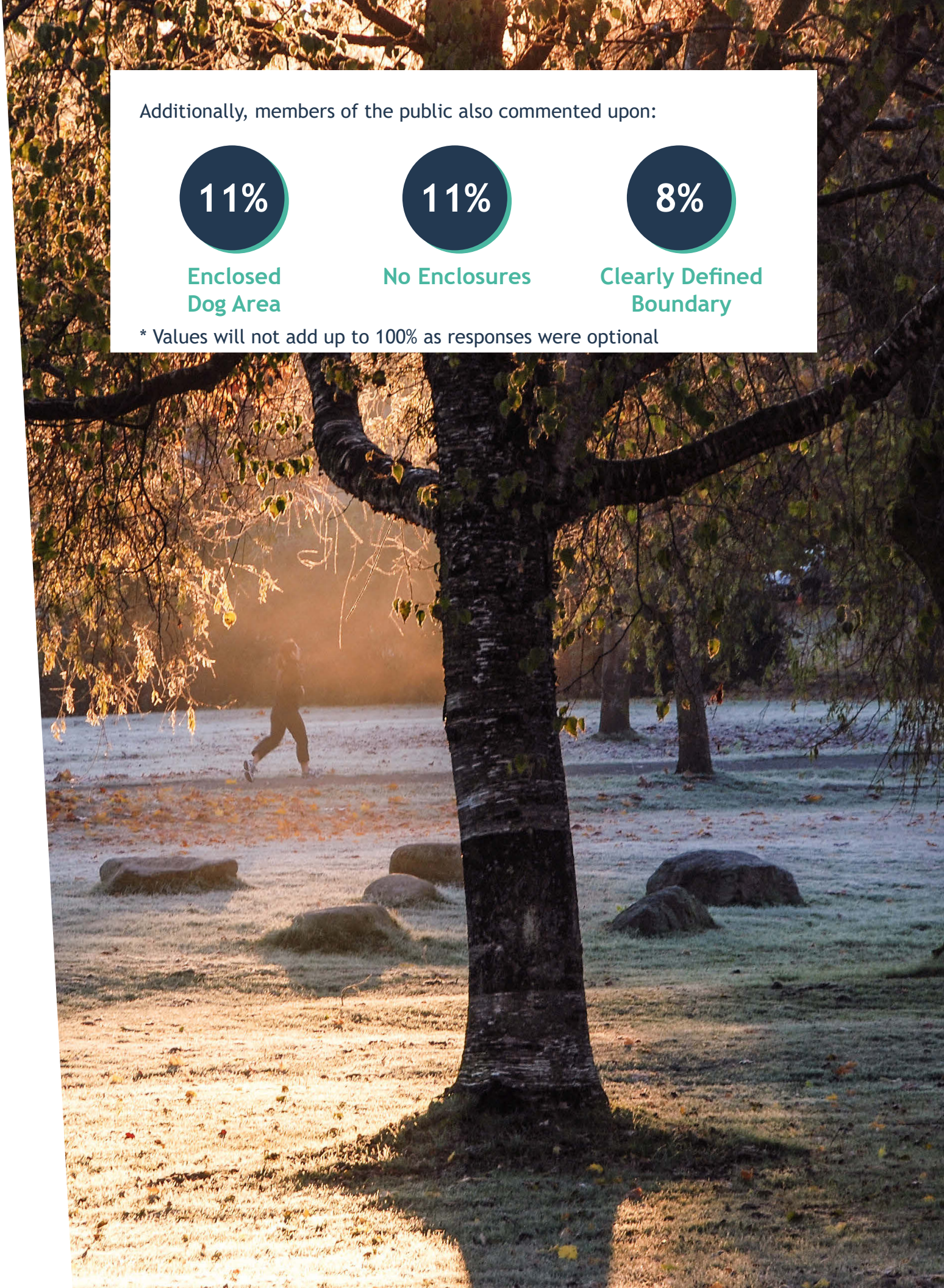
11%

No Enclosures

8%

Clearly Defined
Boundary

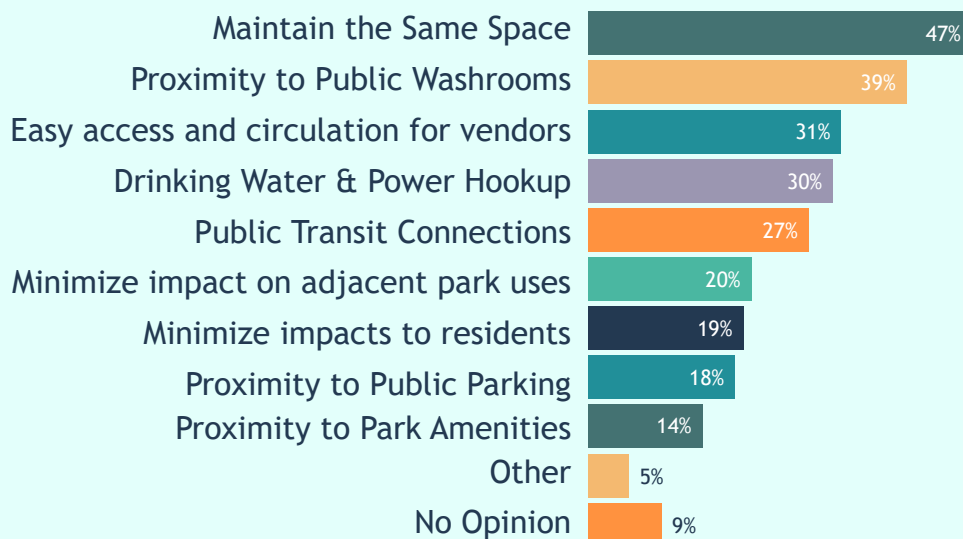
* Values will not add up to 100% as responses were optional



Topic: Farmers Market

The list of criteria used to evaluate potential alternate locations for the farmers market was due to be updated. There were number of criteria that must be used when evaluating a location; however, the City was also interested in understanding which criteria were important to stakeholders. From a list, survey respondents were asked to select up to three important criteria.

We are interested in understanding which ones are important to you. Please select up to three criteria that are most important to you.



The top additional comments received were as follows:

15%

Improve Parking

13%

Bike Parking

11%

Fine As Is

* Values will not add up to 100% as responses were optional

In 2015, several potential locations were suggested for the farmers market. The Park Board wanted to evaluate these locations and consider other options. The four suggested areas are indicated on the map below, and include the existing market location at the north edge of the park (blue shaded area):

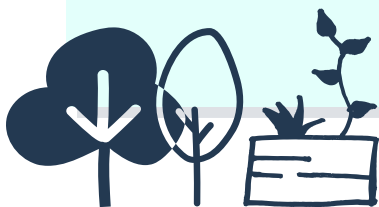
Respondents were asked for their level of agreement with each of the possible locations.



Results show that while there is quite a large group that does not feel strongly about any of the possible locations, the general preference is for the market to remain at its current north parking lot location.

Topic: Community Garden

A proposal had come forward for a community garden in John Hendry Park. This potential new garden would replace the Cedar Cottage Community Garden, which needs to be relocated as the land is dedicated for future affordable housing. The southeast corner of John Hendry Park had been identified as a potentially suitable space for relocation, as indicated on the map below:



39%
Strongly Agree

28%
Somewhat Agree

Do you agree with
a new community
garden in the
general location
shown?



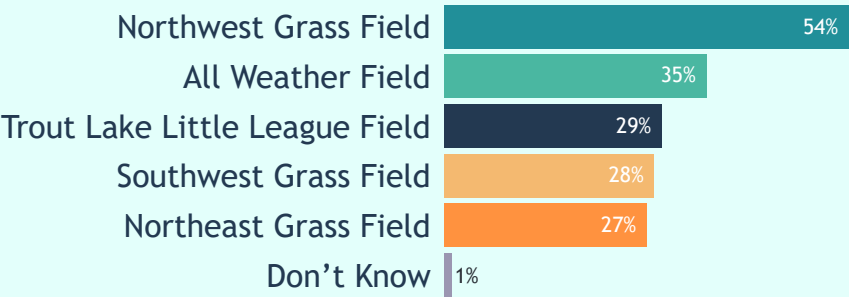
PARK USE

The main themes were that of general support for the proposals and ideas about dogs in the park (to keep the off-leash area at current size, to better enforce on-leash areas, to keep the off-leash area unenclosed, or to add a fenced-in area). Other themes mentioned regularly were that the park should remain as natural as possible and that there should be separate bicycle and pedestrian paths:

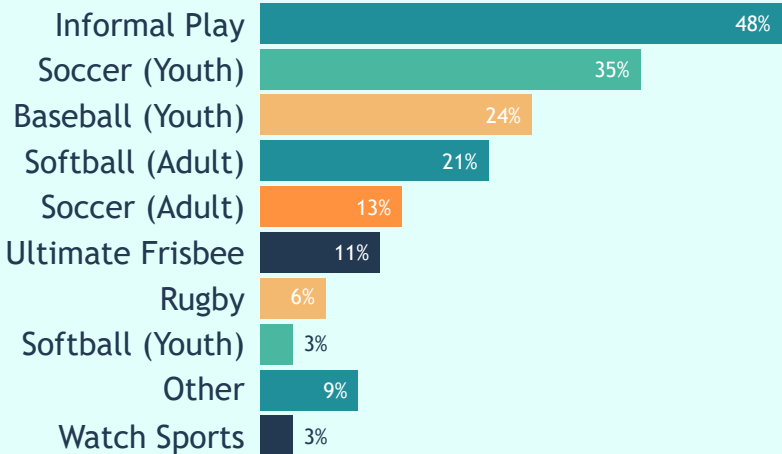
What do you typically do when visiting John Hendry Park? The top answers were:



You said that you/your family use the playing fields in John Hendry Park. Which playing fields do you use?



Which sports do you or your family play on these fields?



OTHER IDEAS

At the closing of the main survey, respondents were asked whether they had any additional ideas for improvements in John Hendry Park. About a quarter of respondents (n=334) provided comments.

Do you have additional ideas for park improvements in John Hendry Park? Among the 334 people who responded, the top answers were:





