

WELCOME!

WORKSHOP



JOHN
HENDRY
PARK
MASTER
PLAN



Workshop Purpose

Continue to engage with community members who are interested in contributing to the Master Plan for John Hendry Park.

Further engage on topics where new recommendations are required:

- sports and play,
- food (community garden & farmers market),
- the off-leash dog area, circulation, etc.



Agenda

Session Description	Time
Welcome and Agenda Review	6:30 – 6:45 p.m.
What We've Heard So Far	6:45 – 6:55
Presentation: Context for Discussion	6:55 – 7:15
Dialogue Round 1	7:15 – 7:55
Dialogue Round 2	7:55 – 8:35
Gallery Walk	8:35 – 8:50
Evaluation + Wrap Up	8:50 – 9:00 p.m.



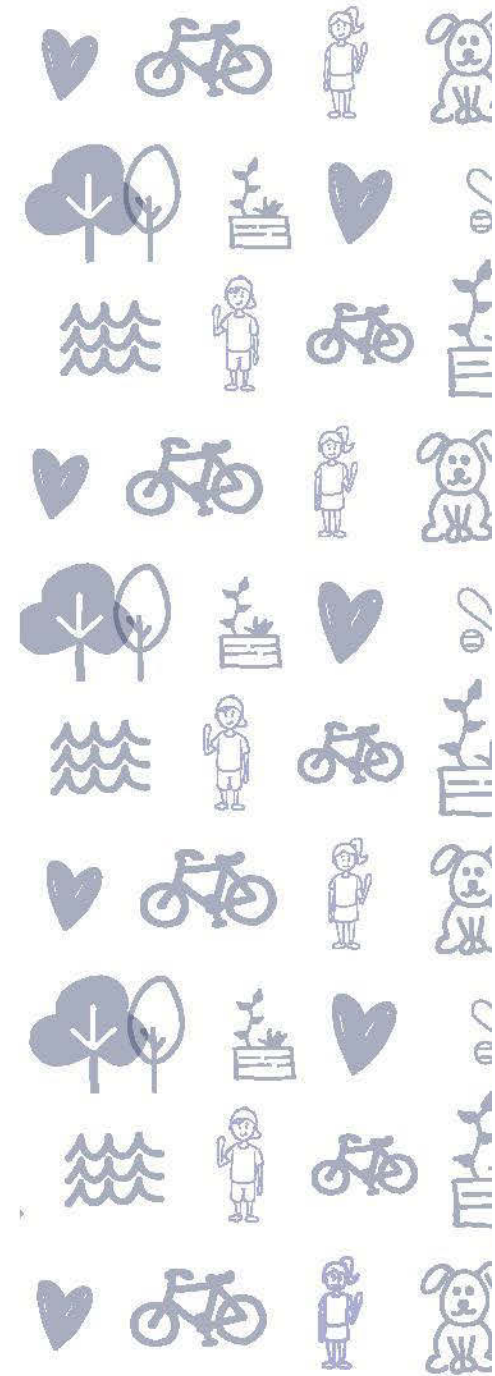
JOHN HENDRY PARK MASTER PLAN

WORKSHOP

Our Discussion Values

How we will work together, in everyone's best interest:

1. We will treat each other with respect and dignity
2. We will balance air time (one person speaks at a time)
3. We can speak only for ourselves (and not on behalf of others)
4. We will listen to understand
5. We value diversity and inclusion



What We've Heard So Far...

- Open House Oct. 5
 - 250 participants
- Survey
 - 1,150+ responses





LET'S PLAY!

Playing Fields, Courts & Playgrounds





WHAT WE'VE HEARD ABOUT Playing Fields

- People love to play in JHP
- Wide variety of activities
- Balancing field use and open space is important
- Key Challenges:
 - Conditions
 - Interface / Adjacencies
 - Access to Amenities





WHAT WE'VE HEARD ABOUT Playgrounds

- Community Centre playground is loved
- Support for upgrading the South Beach playground
- People were inspired by images of nature-play or natural character

Top 3 play inspiration
images selected by
participants at the
October 5th
Open House.





DESIGN GROUND RULES FOR Playing Fields, Courts & Playgrounds



Respect & Complement
Adjacent Park Uses



Encourage Multi-
Purpose Programming



Prepare for Growing
Demand



Think Natural



Consider Parking



Consider Terrain &
Existing Conditions



Prioritize Accessibility





LET'S FETCH! Off-Leash Area





WHAT WE'VE HEARD ABOUT THE Off-Leash Area



ASSETS & OPPORTUNITIES

- 1 North beach is very popular for dog swimming and socializing and is where most off-leash visitors gather.
- 2 Northwest beach has steeper slopes so is less popular for dog swimming, but is sometimes used by shyer dogs.
- 3 Surrounding open spaces provide places for dogs to run and play.
- 4 Existing docks are popular amongst all visitors (with and without dogs), however, they are deteriorating and may need to be replaced or removed soon.
- 5 Shaded seating structure is a very popular place for socializing and relaxing for all park users.
- 6 Off-leash areas away from the lake provide space for shy or quieter dogs to play or for training.
- 7 North parking lot directly adjacent to the off-leash area allows easy access.

CONSTRAINTS & CHALLENGES

- 8 Primary conflict area between off-leash area users, active transportation users, and pedestrians.
- 9 Farmers Market at the north parking lot increases activity and potential for conflict on Saturdays.
- 10 Existing lake trail leads visitors unexpectedly into the most well-used part of the off-leash area.
- 11 No clear signage indicating entry into the off-leash area.
- 12 Boundary between off-leash area and designated sports fields is poorly defined.
- 13 Boundary between off-leash area and BC Parkway Trail is poorly defined.
- 14 Existing natural habitat area is vulnerable to dog activity.
- 15 Off-leash activities observed in the on-leash designated parts of John Hendry Park.



WHAT WE'VE HEARD ABOUT THE Off-Leash Area

Quotes from the online survey and open house:

Dog park must NOT be fenced or made smaller

Some fencing near the busiest path intersections is appropriate

Enclose it all! Dogs don't know abstract boundaries

Do NOT have circulation routes go through the dog area, as this creates the potential for conflict





DESIGN GROUND RULES FOR THE Off-Leash Area



Maintain a Sufficient
Size & Quality



Keep the Location at
the North End of Trout
Lake



Clarify Boundaries



Provide Routes for All
Park Users



Mitigate Issues between Less
Compatible Adjacencies



Improve Accessibility



Add Desirable Amenities



Encourage Respect and
Stewardship





LET'S EAT!

Farmers Market & Community Garden





WHAT WE'VE HEARD ABOUT THE Farmers Market

- 72% of survey participants go to the market
- Many people like the current location, but there are some challenges
- Many are not concerned about specific location, just that it remains in JHP





DESIGN GROUND RULES FOR THE Farmers Market



Consider Potential Future
Growth



Reduce Conflict with
Adjacent Park Uses



Be a Good Neighbour



Maintain Access &
Circulation for Vendors



Encourage Alternate
Modes of
Transportation



Add Amenities to
Increase Function &
Enjoyment



Support Access for All
Abilities





WHAT WE'VE HEARD ABOUT THE Community Garden

- 67% of survey participants support a community garden in JHP (25% were neutral)
- Southeast corner of the park appears favourable
- Primary concerns are around ensuring the space is inclusive





DESIGN GROUND RULES FOR A Community Garden



Create a Space that is
Welcoming & Inclusive



Create a
Functional Garden



Be a Good Neighbour



Develop Thoughtful
Circulation



Plan for Solar Access Based
on Existing Conditions



Incorporate Learning



Support Access
for All Abilities





WHAT ELSE?

Circulation, Lake, Nature + More





WHAT WE'VE HEARD ABOUT Natural Areas & Trout Lake

- Strong support for protecting and enhancing natural areas
- Interest in prioritizing improvements to Trout Lake for swimmability
- Desire to recapture access to natural areas





WHAT WE'VE HEARD ABOUT Circulation

- There are a number of points of conflict, gaps, and issues in the network
- People would like to see more amenities like:
 - Drinking water
 - Places to sit
 - Bicycle racks
 - Wayfinding





WHAT WE'VE HEARD ABOUT THE South Beach Area

- Support for replacing the Concession and Washroom Building
- Support for beach enhancements
- Desire for area to remain natural, but enhanced





WHAT WE'VE HEARD ABOUT Other Ideas

- Several ideas for new elements in the park
- Emphasis on arts, culture, and socializing
- Emphasis to NOT overdo it – maintain the open green spaces that make this park special





DESIGN GROUND RULES FOR John Hendry Park Overall



Protect Natural Spaces



Ensure Ecological Gains



Support the City's
Commitment to a Green
Vancouver



Support Safety &
Accessibility



Provide Diverse Options



Create Coherent Park
Design



Manage Costs



Dialogue Format

- Four groups, each with different topics:
 1. Let's Play: fields and play areas
 2. Let's Fetch: Dog Off-Leash Area
 3. Let's Eat: farmer's market and community garden
 4. What Else: circulation, special events, other
- Two rounds of dialogue – 40 minutes each
- Pick a topic
- Round 2 – pick a different topic!



Gallery Walk

- 1) Check out the graphic recordings around the room
- 2) Ask the graphic facilitators questions/points for clarification
- 3) Additional thoughts / ideas?
 - Write them on a sticky note



Next Steps

Deep Dive sessions next week:

- Dogs – Nov. 26
- Farmer's Market and Community Garden – Nov. 28
- Fields and Playgrounds – Nov. 28



Thank You!

Please fill out a session evaluation before you go

Time is precious so thank you for spending yours with us.

