

IMPORTANT INFORMATION

Please have this translated

RENSEIGNEMENTS IMPORTANTS

Prière de les faire traduire

重要資訊 請找人為你翻譯

重要资讯 请找人为你翻译

MAHALAGANG KAALAMAN

Mangyaring isalin ito

ਜ਼ਰੂਰੀ ਜਾਣਕਾਰੀ

ਕਿਰਪਾ ਕਰਕੇ ਕਿਸੇ ਕੋਲੋਂ ਇਸ ਦਾ ਉਲਥਾ ਕਰਵਾਓ

TIN TỨC QUAN TRỌNG

Xin hãy dịch sang tiếng Việt

INFORMACIÓN IMPORTANTE

Busque a alguien que le traduzca

중요정보 번역해주세요

اطلاعات مهم لطفا درخواست کنید
این اطلاعات را برای شما ترجمه کنند

October 23, 2019

Dear Resident and/ or Business Owner:

RE: King Edward Avenue Complete Street Improvements (Heather St to Ontario St)

Starting in fall 2019, the City will begin constructing the King Edward Ave Complete Street Improvements project between Heather St and Ontario St. This project is being built in conjunction with new developments along the corridor and will be phased over a number of years (see Diagram 1).

Based on the Cambie Corridor Plan, the City has created a street design for King Edward Ave that improves access and safety for all road users. When completed, the improvements will include all ages and abilities cycling facilities, wider sidewalks, and safer intersections.

Background

In May of 2018, City of Vancouver Council approved Phase 3 of the Cambie Corridor Plan, which will provide adjacent neighbourhoods with more diverse housing options, new employment spaces, and better connections for all travel modes. The Corridor Plan also includes policies and goals to enhance the unique feel of each neighbourhood along the corridor, including the use of *Complete Streets*, to improve safety and access for all road users along Cambie Street and other major roadways.

Diagram 1



Phase 1 - Fall 2019 and Winter 2020- King Edward Avenue from the lane west of Yukon Street to Columbia Street

In Fall 2019, there will be some changes around the intersection of Yukon Street and King Edward Avenue. A detailed map of the design is attached in Diagram 2.

The changes include:

- Installing a protected bike lane on the south side of King Edward Avenue between the laneway west of Yukon Street to the east side of Yukon Street.
 - The bike lane will be uni-directional approaching Yukon Street and then widen and allow bi-directional cycling to help people cycling on the Yukon Street Bikeway navigate the offset intersection.
- Bike and pedestrian access across the boulevard (to/from north side of Yukon Street)
- New turn restrictions for the north side of Yukon Street. Right turn-only north onto Yukon Street or west onto King Edward Avenue.
- Vehicle traffic changes will change the south side of Yukon Street to one-way northbound between the lane and King Edward Avenue.

In Winter 2020, the south side uni-directional protected bike lane will be extended from Yukon Street to Columbia Street with adjacent development.

Future Phases

Timelines for implementing future phases will be determined with new development. Although the existing conditions on King Edward Avenue vary slightly in each block, the overall future design will maintain two vehicle travel lanes in peak periods and have off-peak parking on both sides of the street (see Diagram 3). The new design will also include protected bike lanes, accessible crossings, and wider sidewalks.

If you have any questions related to the King Edward Complete Street Improvements or if you would like to learn more details about the project, including construction impacts and timelines, please:

- visit the project webpage at vancouver.ca/CambieCorridor
- email our team at bikeupgrades@vancouver.ca

Sincerely,

Transportation Design Branch
Engineering Services, City of Vancouver

Diagram 2

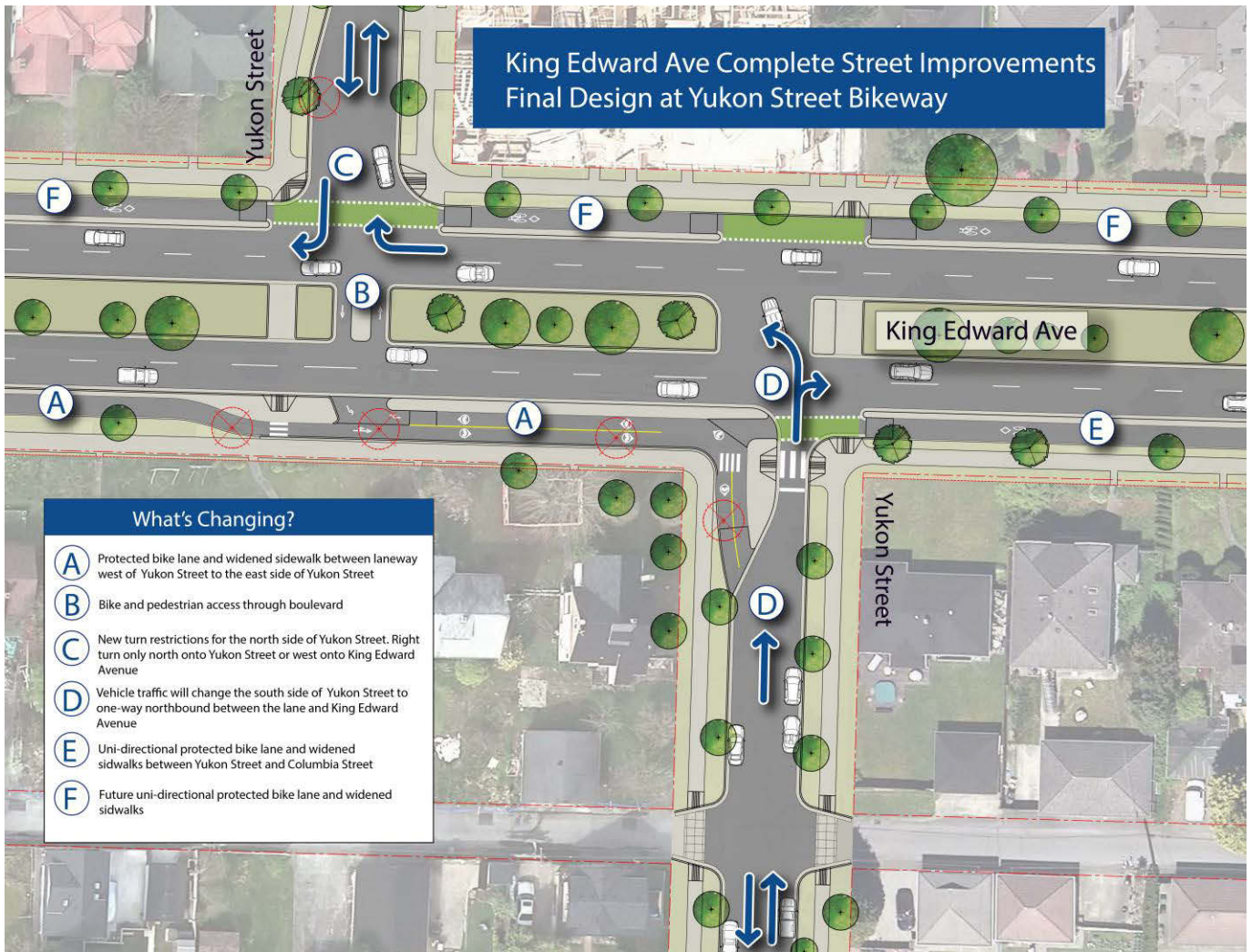
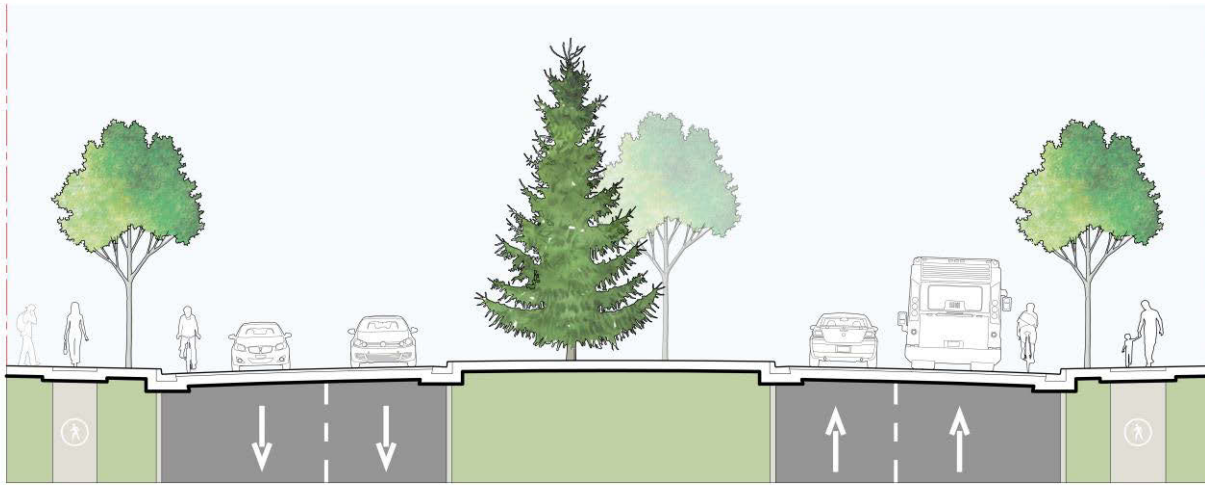


Diagram 3

King Edward Avenue- Typical Existing Condition (facing east)



King Edward Avenue- Future Condition (facing east)

