



New Park Here

MAIN & 7 PARK

Phase 1 - Public Engagement



WHATS HAPPENING?

The Vancouver Park Board is planning a new half-block urban park for the Mount Pleasant community at the intersection of Main Street & 7th Avenue and we would like your help to design it.

This new urban park sits at the gateway to Mount Pleasant, one of Vancouver's most vibrant neighbourhoods and its design will strive to reflect the needs of the area.

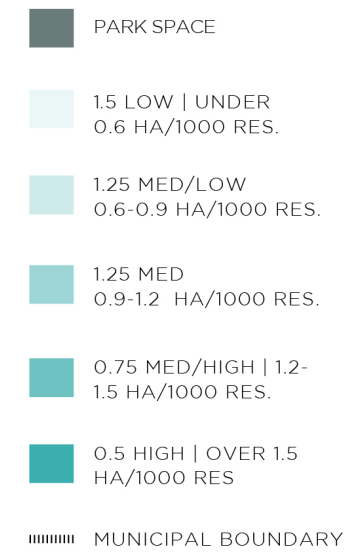
We want to hear from you! What opportunities can this new park offer to support the community's open space needs? There are a number of existing parks nearby that support different activities like playgrounds and sports courts, and with events like Mural Festival and Car Free Day growing every year we hope the new park can be a flexible staging place for community events and all-season programming.



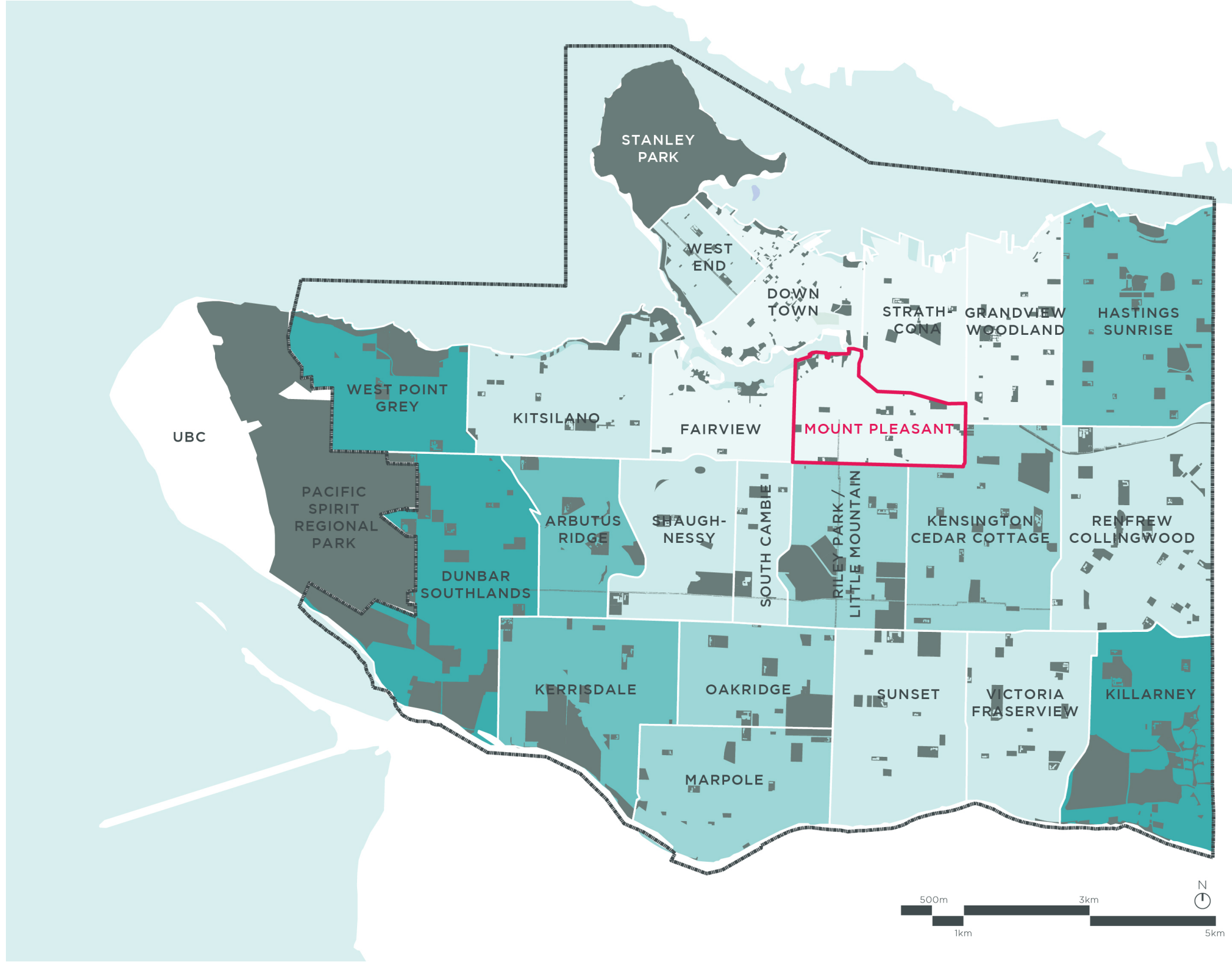
NEW PARK SPACE

VanPlay, Vancouver's Parks and Recreation Services Master Plan, guides the work of the Vancouver Board of Parks and Recreation over the next 25 years. Through data collected in Vanplay, Mount Pleasant is projected to be lacking in park space by the year 2041 in relation to forecasted population figures. The proposed park at Main & 7th is an ideal location to provide some much needed public space.

PARK PROVISION SCORE



SOURCE: Park Board park data + 2041 Population Projections. (Including all Park Board parks except for destination parks)



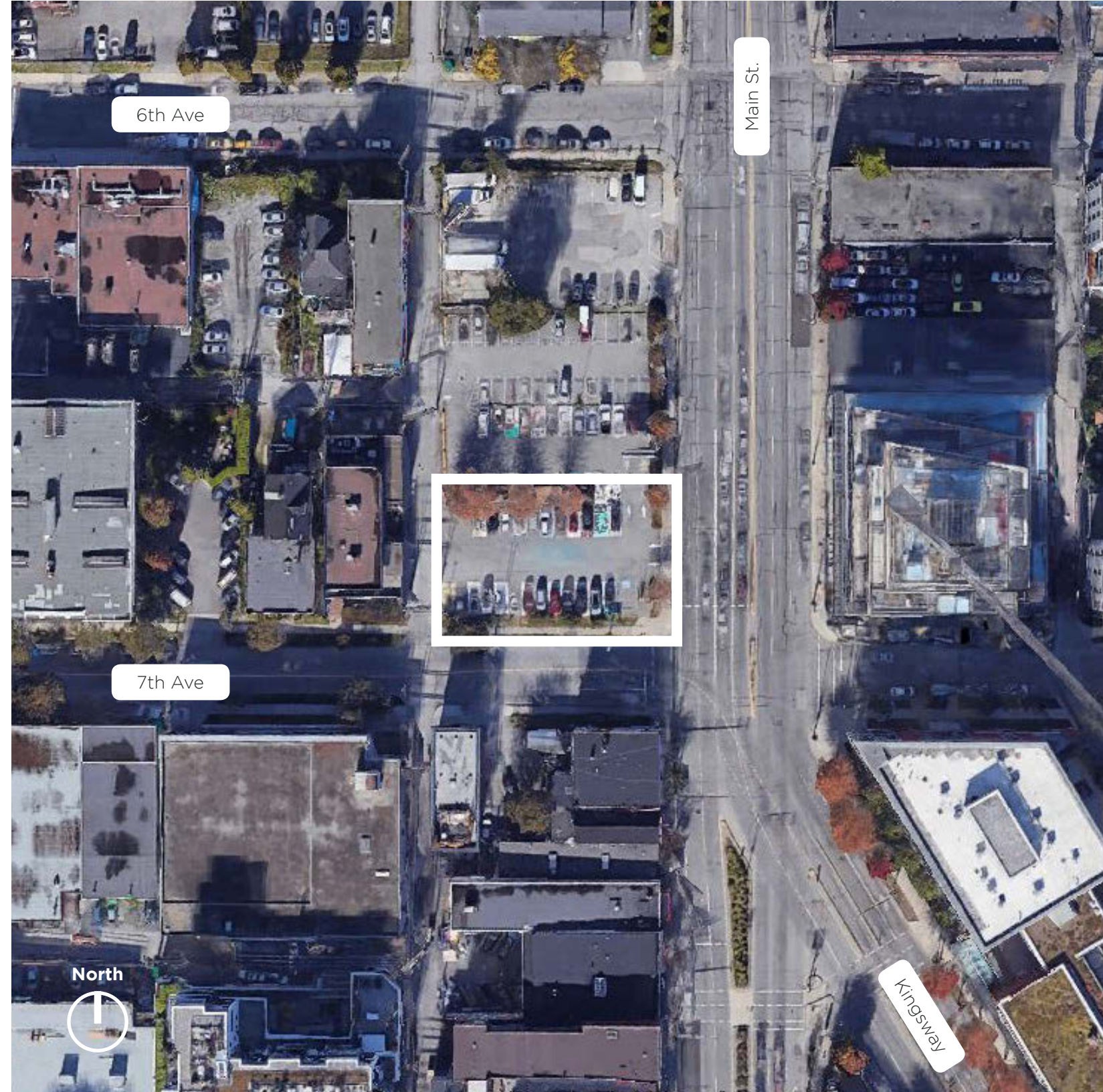
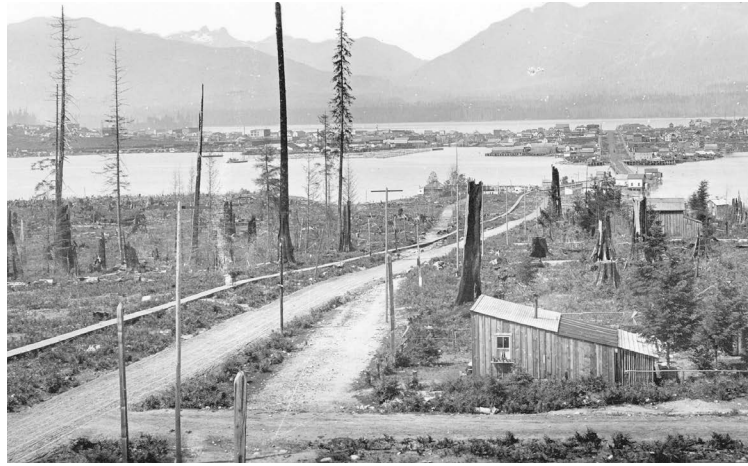
SITE HISTORY

The proposed Park at Main & 7th is situated within a significant location in Vancouver's history and has changed dramatically over time.

Long before settlers arrived in Canada, the 'Kingsway' route was a prominent trail for the First Nations within the region. Relatively flat, the trail was soon converted to a primary road by settlers connecting the ports in Vancouver and New Westminster.

For the past few decades, the Main & 7th site has been used primarily as a parking lot, with extensive asphalt and a handful of medium sized trees in poor ground conditions. Prior to that, the site has housed a car mechanic yard and numerous residential properties.

In 2017, the site was approved to be rezoned as affordable housing, and work was initiated immediately to design the space. The adjacent construction project is expected to be complete as early as 2021 with the park space beginning construction soon after.



A GROWING NEIGHBOURHOOD

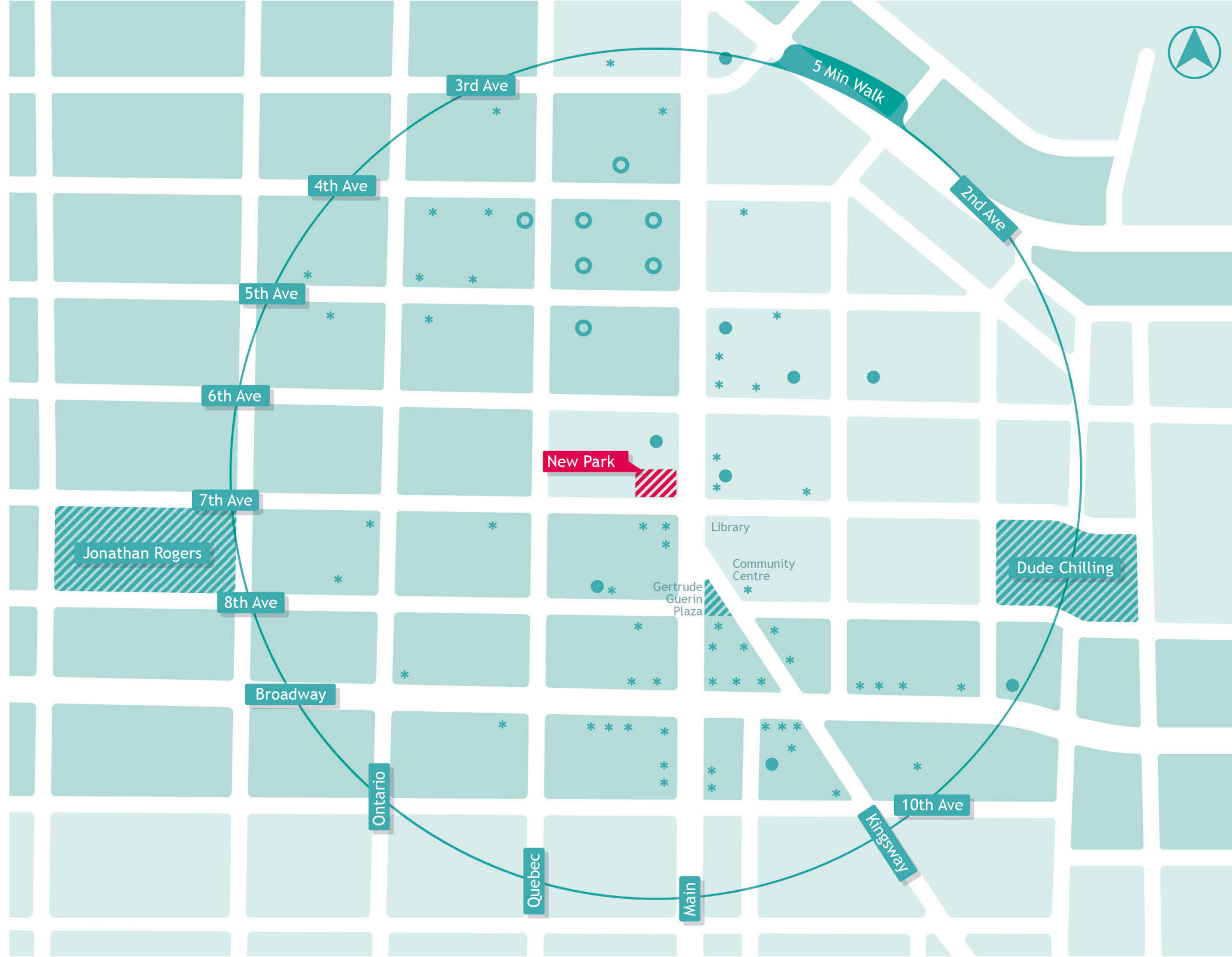
There are many new developments in the Mount Pleasant neighbourhood, many of which are within a five minute walk of the Main & 7th park site. With these developments containing both residential and business properties, there will be more people in the area.

The affordable housing development adjacent to the park will house 145 below market rental apartments, and retail space on the ground floor. A business serving food and drink is planned for the retail space fronting onto the proposed Main & 7th park.

Those who work nearby can benefit from the park as a great location for lunch breaks or even an outdoor meeting. Residences can use the park as a space to meet with friends and family to relax and perhaps enjoy a picnic.

LEGEND

- Commercial Blocks (Typ)
- Residential Blocks (Typ)
- Park/Open Space
- Office Development
- Residential Development
- * Food & Drink



ACCESS MAP

Situated towards the north entrance of Mount Pleasant, the site has the opportunity to become a gateway to the neighbourhood.

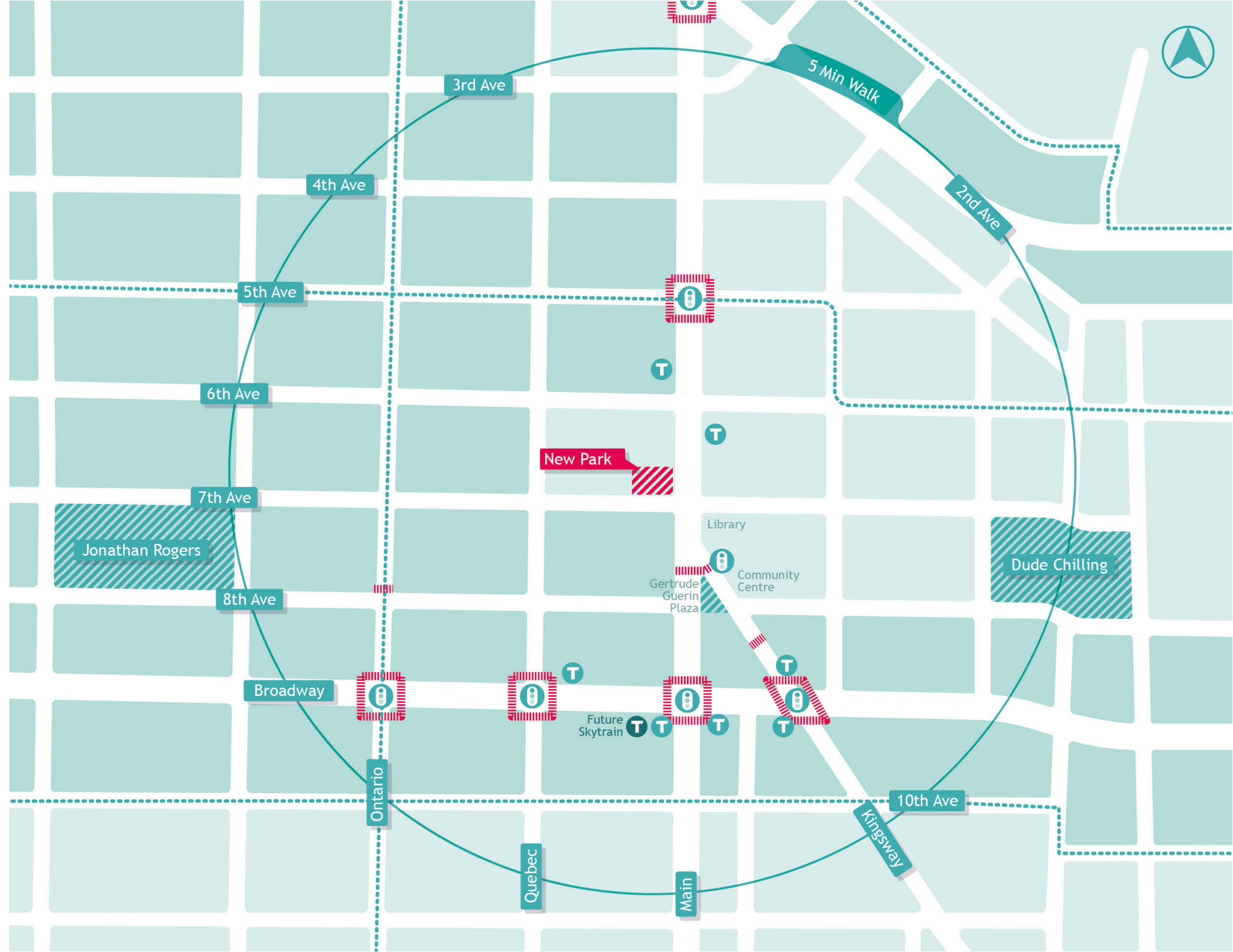
Pedestrians and cyclists from all adjacent blocks and transit routes can access the site relatively easily, which helps welcome people into the park.

Close to other amenities, like the library and community centre, restaurants and cafes, the site could entertain a wide variety of functions with some careful design.

LEGEND

- Commercial Blocks (Typ)
- Residential Blocks (Typ)
- Park/Open Space

- Traffic Control
- Pedestrian Crossings
- Bicycle Routes
- Transit Stops



PROJECT TIMELINE

WE ARE HERE

PUBLIC ENGAGEMENT Fall 2020

The first round of public engagement will help us collect ideas and opinions from members of the public.



PRELIMINARY DESIGN Winter 2020

With the feedback from the public engagement, we will develop some concept designs.



PUBLIC ENGAGEMENT Spring 2021

A series of early designs and ideas will be exhibited to the public for comment and review.



DESIGN DEVELOPMENT 2021

Throughout 2021, we will detail the design of the Main & 7th park further and get it ready for construction.



CONSTRUCTION 2022

Work will begin on constructing the new park site in 2022.



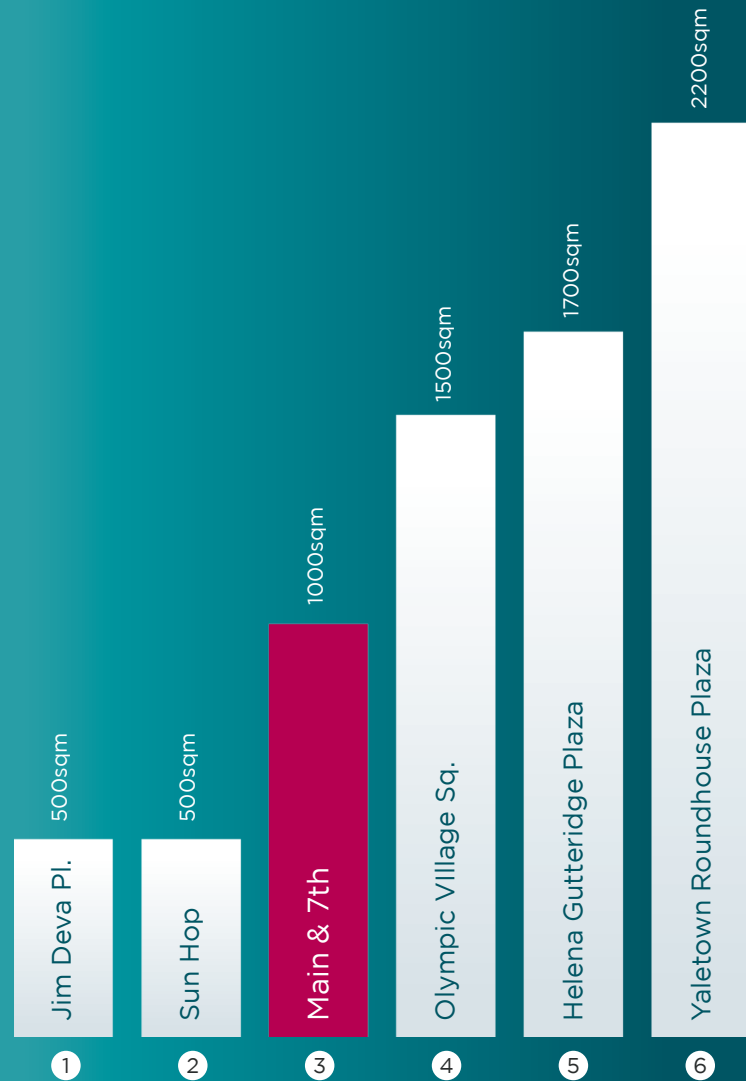
GRAND OPENING 2022

The park will be opened in 2022, ready for the neighbourhood to enjoy.

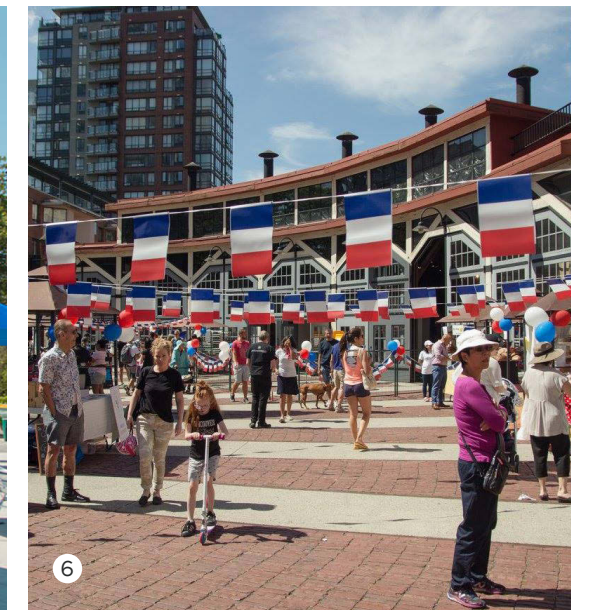


SCALE COMPARISON

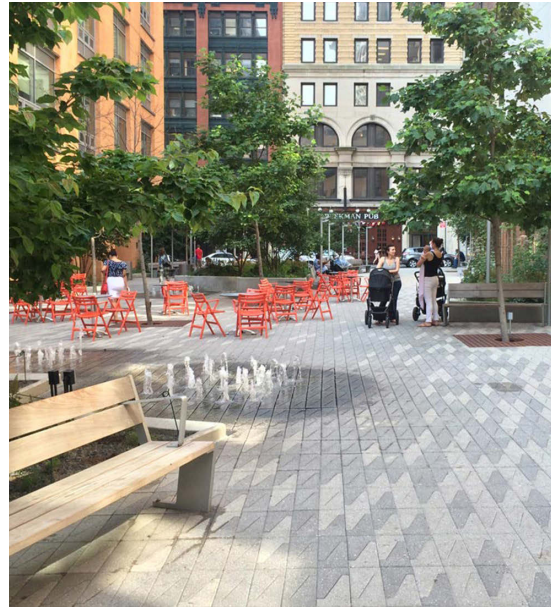
Relatively compact in scale, the Main & 7th park is comparable to some other well loved parks and plazas across the city. Throughout the year these spaces support some very successful public events and leisure activities.



All areas are approximate*



1. Jim Deva Plaza - Davie St & Bute
 2. Sun Hop Park - Main & 18th
 3. Main & 7th
 4. Olympic Village Square - Manitoba & Athletes Way
 5. Helena Gutteridge Plaza - Vancouver City Hall
 6. Yaletown Roundhouse Plaza - Pacific Blvd & Davie

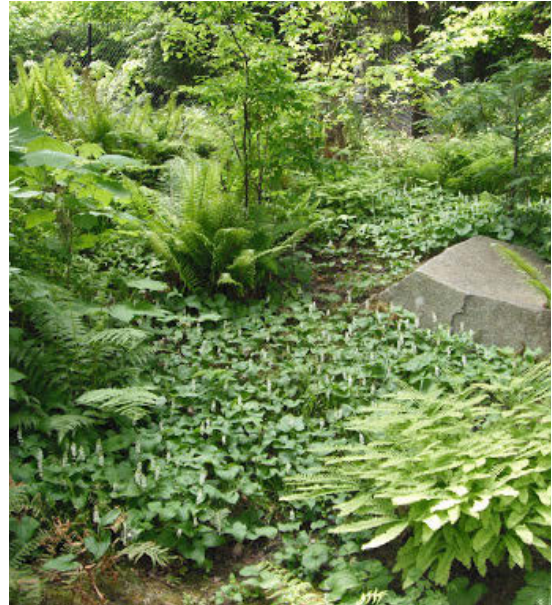


PRECEDENTS - ATMOSPHERE

What should the feeling of this park be? Lively and bold? Calm and reflective?

PRECEDENTS - USES

With the Mural Festival and Car Free Day already being held within the vicinity of the park, what other uses would you like to see in the site?



PRECEDENTS - PLANTING

With the park being a compact urban space, how should the planting be designed? Natural? Formal? Flowering?