

# Moberly Park synthetic turf field & fieldhouse

## Introduction



- |               |                                    |                    |
|---------------|------------------------------------|--------------------|
| 1 North field | 4 Walter Moberly Elementary School | 7 Community garden |
| 2 Playground  | 5 Moberly Arts & Cultural Centre   | 8 Ross Park        |
| 3 South field | 6 Tennis courts                    |                    |

## Background

Moberly Park was identified as a future synthetic turf site in the Vancouver Park Board's Sport Field Strategy. A new synthetic turf field, lighting, fieldhouse and walking loop are being introduced in response to a 2024 Park Board Motion on the provision of park amenities in south Vancouver.

## Vision

To create a vibrant, inclusive, and sustainable park space that supports field hockey and other recreational activities, while fostering community connections and enhancing accessibility for people of all ages and abilities

## Key goals & objectives

- Create a new high-quality synthetic turf field that primarily serves the field hockey community
- Provide a new high-quality and durable fieldhouse that supports the synthetic turf field
- Provide a walking loop as a safe neighbourhood amenity that offers diverse activities for people of all ages and abilities

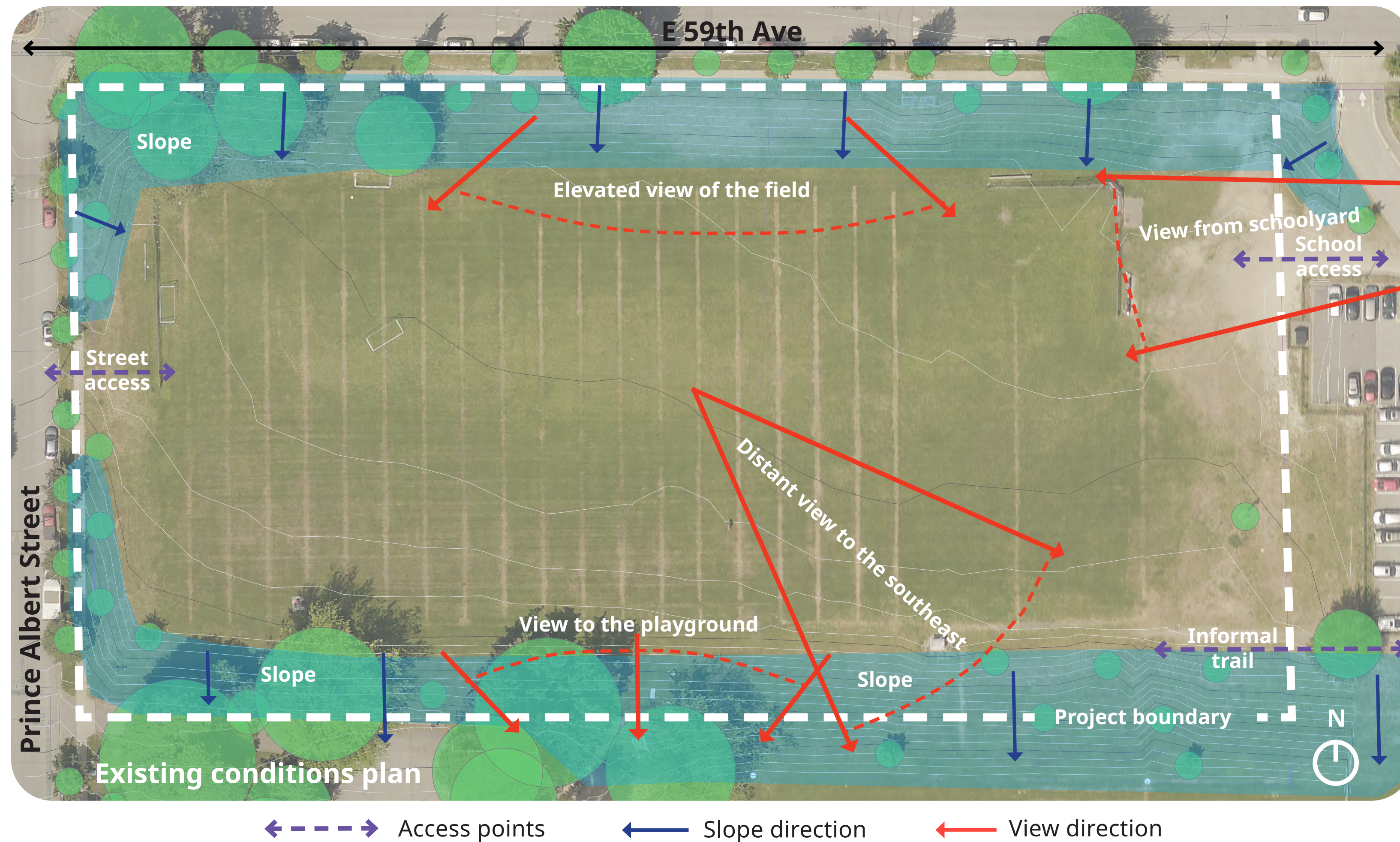
## Design elements

- Synthetic turf field
- Fieldhouse:
  - Public washrooms
  - Changerooms with showers and washrooms
  - Storage
- Accessible looping path to support casual community use
- Energy efficient lighting system to illuminate the field and supporting amenities
- Pedestrian lighting at all pathways
- Flexible spectator seating adjacent to the field that also supports casual community use
- Drinking fountain/bottle filler, misting station(s), signage, seating and other furnishings



# Moberly Park synthetic turf field & fieldhouse

## Site analysis

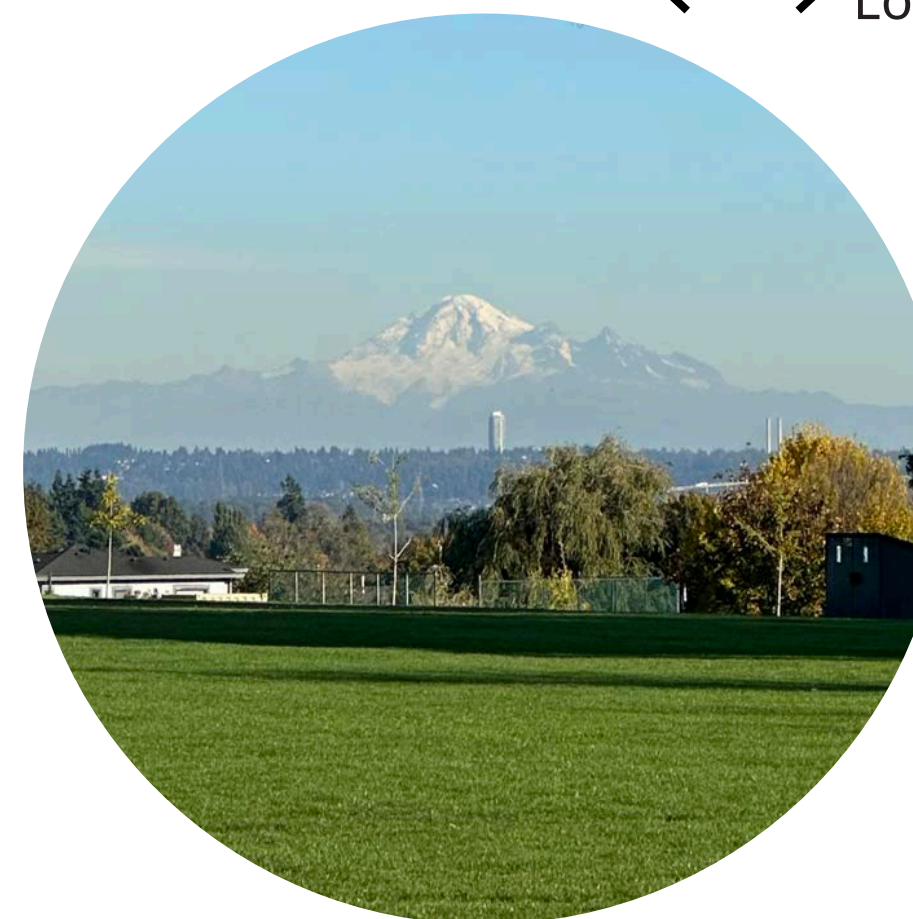


### Topography

- The site offers a large flat area that is bounded by sloping banks to the north and south. Only at one location on the west side is the field at the same elevation as the adjacent street
- The slope on the north side provides an elevated view of the field and has excellent solar exposure, making it a desirable location on sunny days

### Site lines and views

- Views of Mount Baker and the Cascade Range to the southwest contribute to overall scenic quality and enhance the user experience of the park
- The location of the upper field provides for good visibility of the playground, supporting user safety and oversight



## Opportunities

- Deliver a new field hockey facility aligned with the Park Board's Sport Field Strategy
- Capitalize on views from the site with well-situated seating and gathering spaces
- Create a neighbourhood hub and community amenity that provides opportunities for socialization and recreation
- Enhance the overall park experience by providing amenities that benefit all park users, not only field users
- Utilize the new walking path to create formal connections between new and existing amenities within the park

## Challenges

- Steep slopes on the north and south sides of the project site present challenges for creating connections to the street and adjacent areas within the park
- Existing mature trees, buildings, and other park amenities limit the work area and usable space for new improvements
- Grade differences between the project site and adjacent streets make new service connections complicated and costly



# Moberly Park synthetic turf field & fieldhouse

## Draft concept plan



This is a draft concept plan for a new synthetic turf field dedicated primarily to field hockey.

Surrounding the field is an accessible walking loop for recreation and socializing, with pedestrian lighting and opportunities to sit and rest.

A new fieldhouse with changerooms and universally accessible washrooms will support comfort, safety, and inclusivity for all park visitors.

Sport lighting adjacent to the field will utilize modern technology to avoid spillover of lighting into areas outside the park.

Spectators will be able to view activities on the field from terraced seating built into an existing slope on the north side.

- 1 Synthetic turf field hockey pitch
  - 2 Fieldhouse
  - 3 Terraced seating on slope
  - 4 Accessible walking loop
  - 5 Warm-up area
  - 6 Maintenance access
  - 7 Players & officials shelters
  - 8 Flexible open space
  - 9 Existing playground
  - 10 Existing grass sports field
- Field light



# Moberly Park synthetic turf field & fieldhouse

## Reference images

These images are intended to help you visualize the proposed features in the draft concept plan



Field hockey pitch



Terraced seating on slope



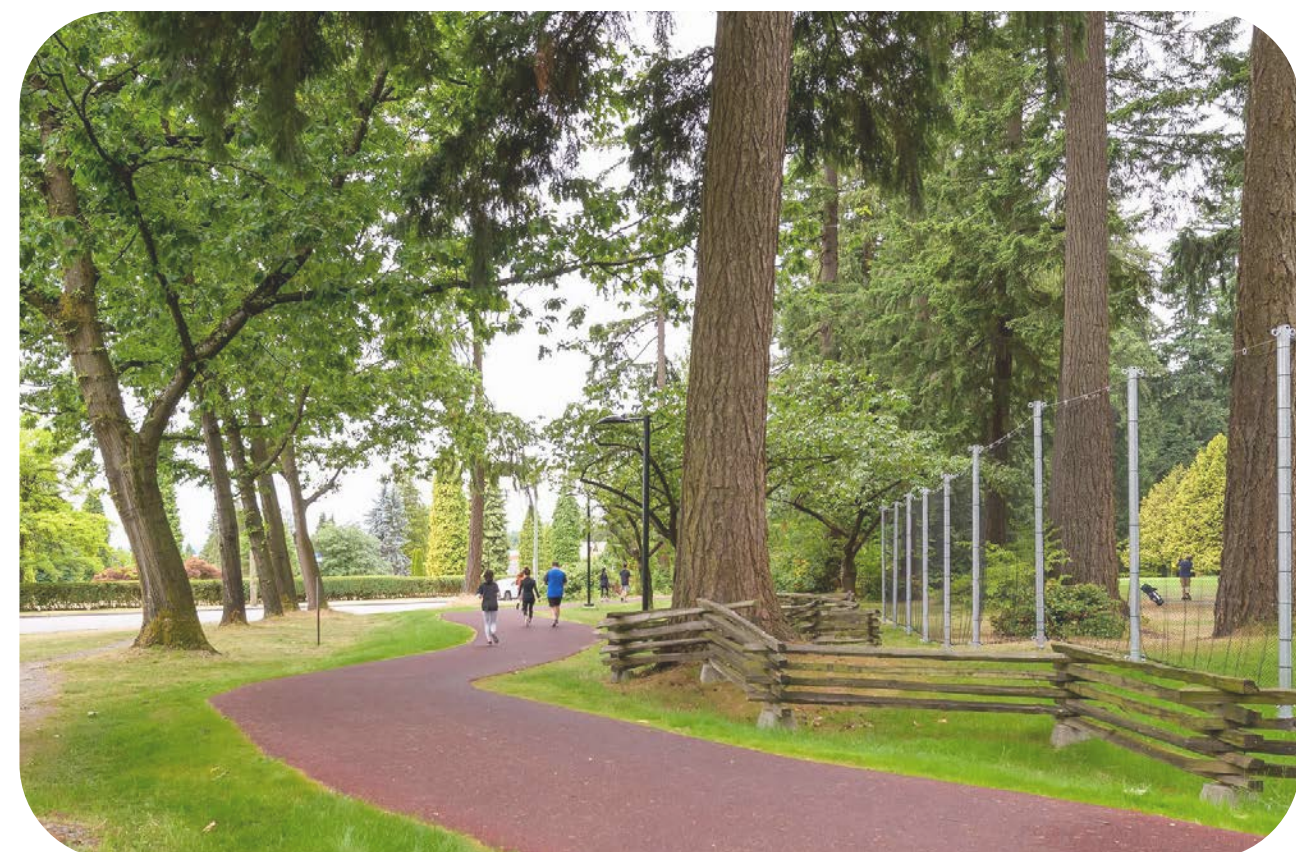
Field lighting



Exteriors: painted concrete block



Interiors: washrooms



Looping park path



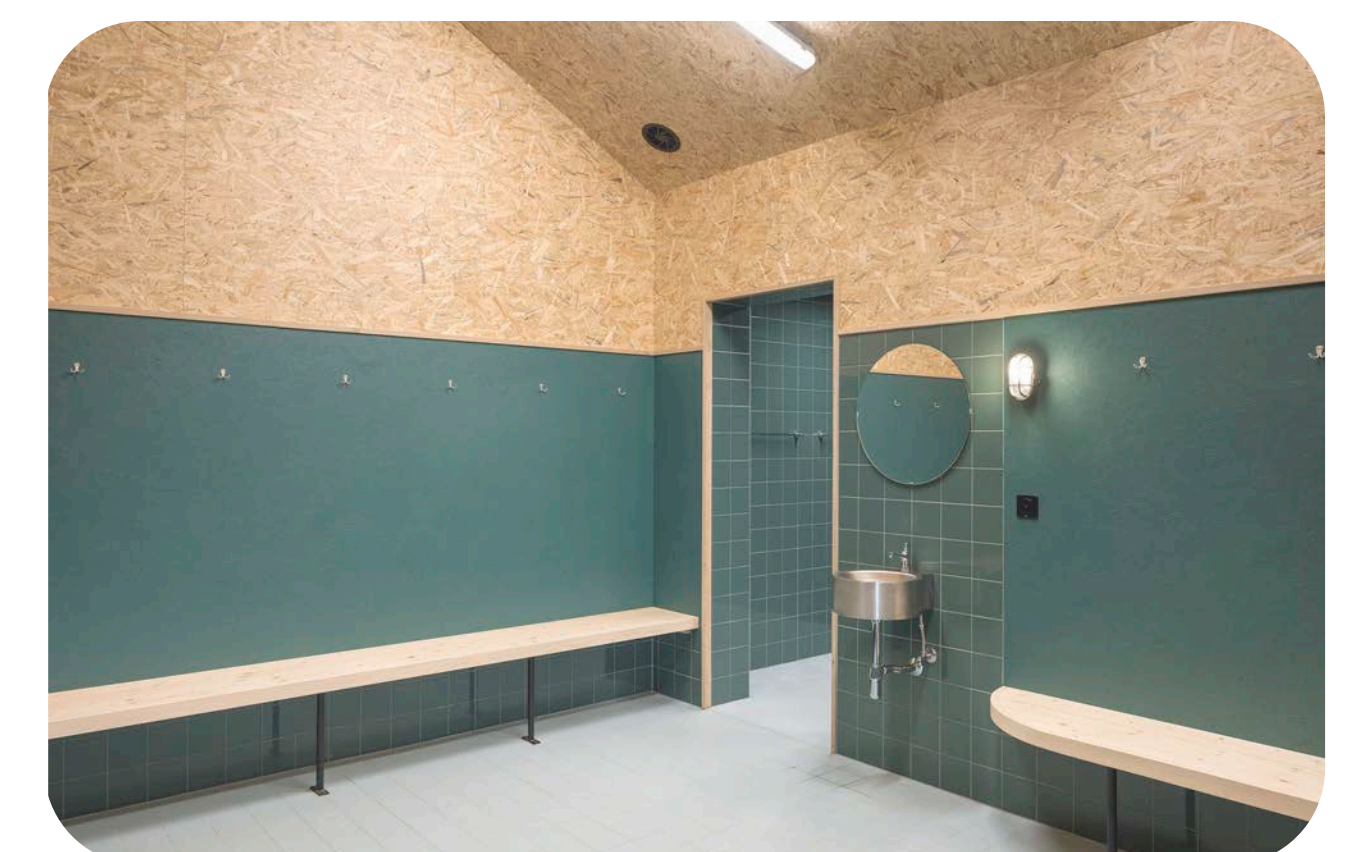
Park seating



Field lighting



Exteriors: overhanging element



Interiors: changerooms



Misting station



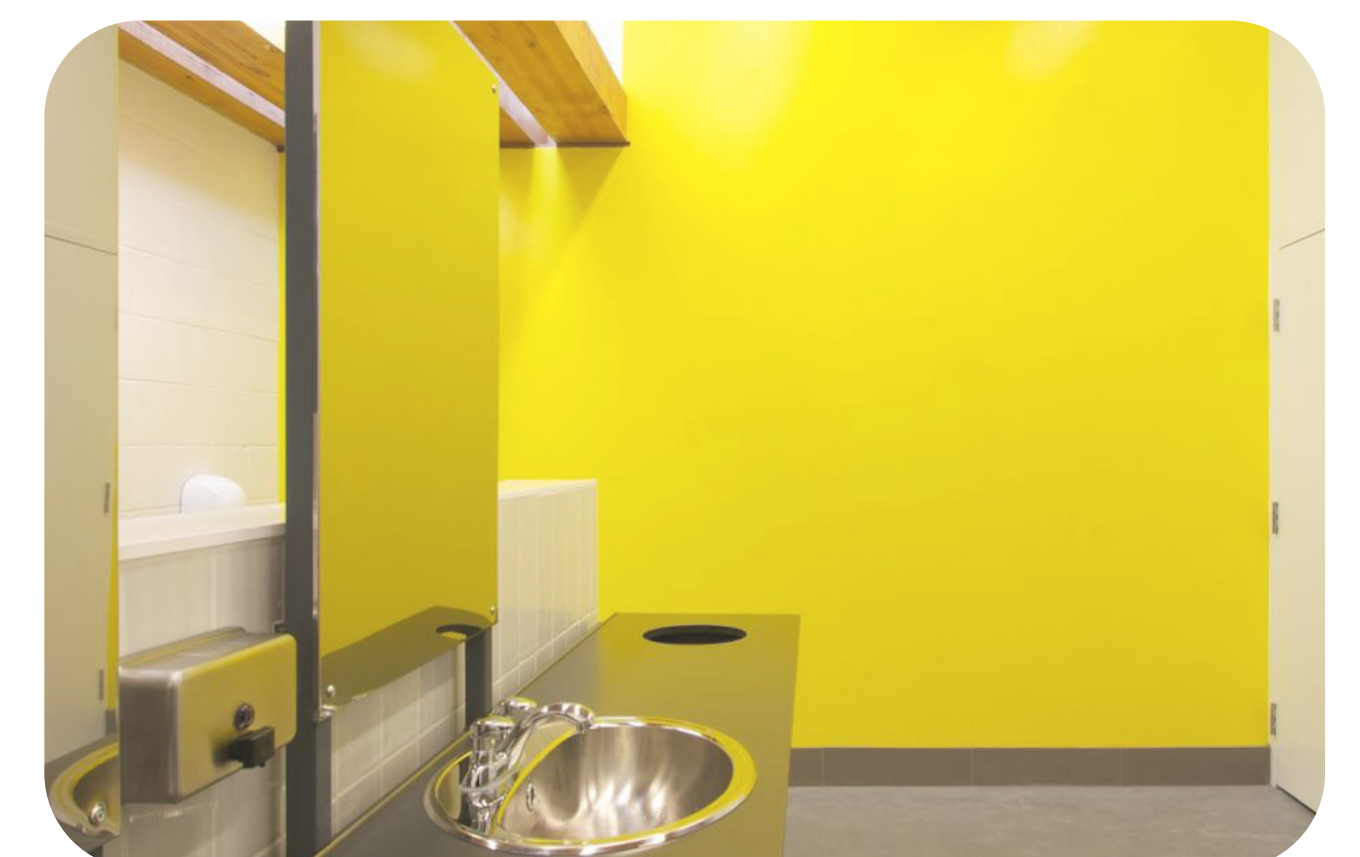
Drinking fountain/bottle filler



Seating/gathering areas



Exterior: skylights and perforations



Interiors: washrooms



# Moberly Park synthetic turf field & fieldhouse

## Project timeline and updates



Image showing existing north field at Moberly Park

**Winter 2025**

Concept development

**Spring 2026**

Finalized concept

**Summer 2026**

Detailed design and tender

**2027**

Construction

### Thank you!

Thank you for your interest in the new synthetic turf field and fieldhouse updates.

The plan will be further refined and presented to the Park Board in spring 2026.

Once approved, the concept plan will be developed to a detailed design level with the anticipation of construction in early 2027.

### Contact us!

[moberly.synturf.field@vancouver.ca](mailto:moberly.synturf.field@vancouver.ca)

### Stay informed!

Keep up to date by visiting the project webpage at: [vancouver.ca/moberly-synturf-field](https://vancouver.ca/moberly-synturf-field)

Moberly Park synthetic turf field and fieldhouse

Public information sessions  
December 6, 9:30 am - 12:30 pm  
December 10, 2:00 - 5:00 pm  
[vancouver.ca/moberly-synturf-field](https://vancouver.ca/moberly-synturf-field)



05