

Mount Pleasant Community Public Realm Principles

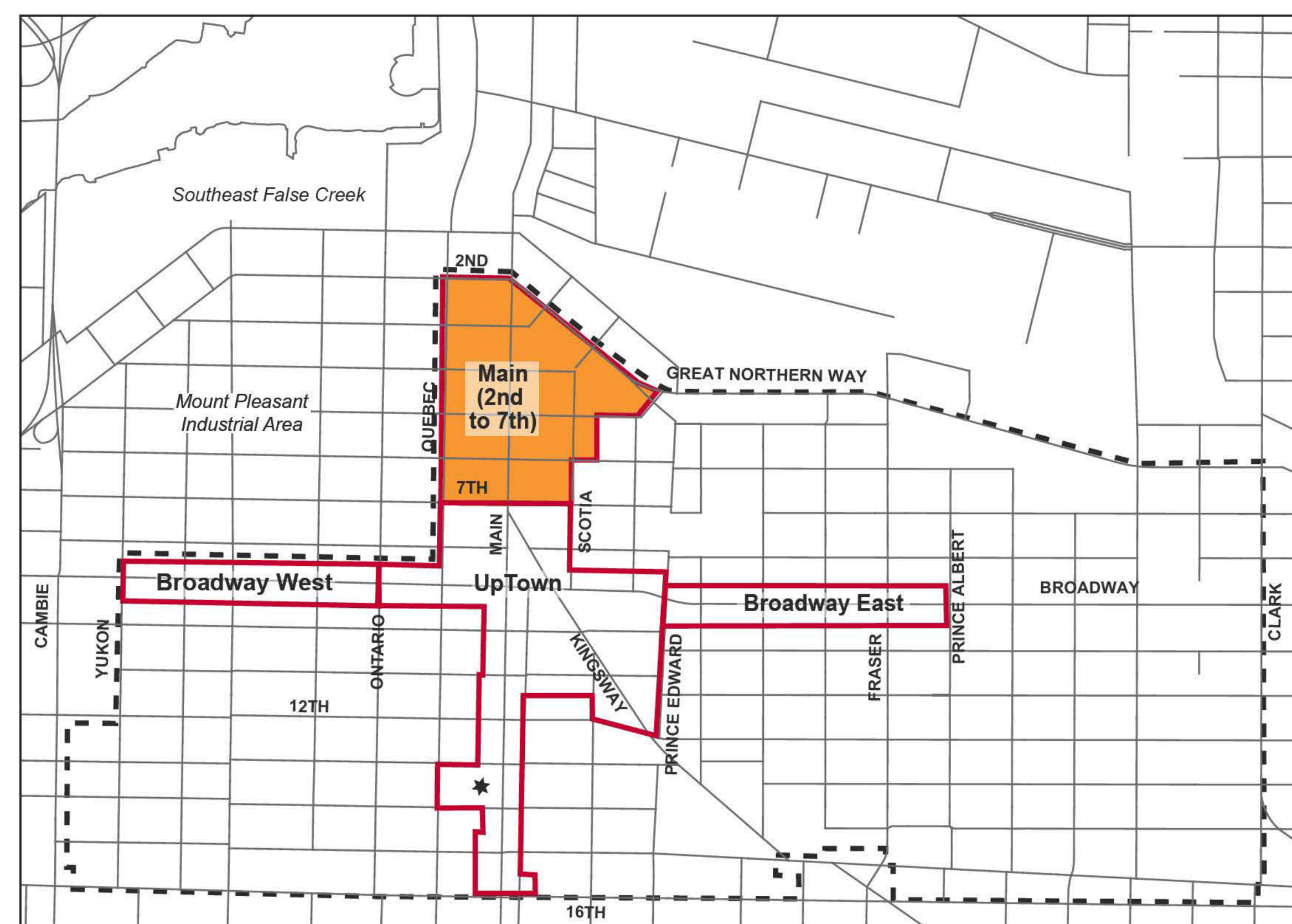
The **DRAFT** Mount Pleasant Community Public Realm Principles are based on the Community Plan as well as initial reflections from Consultants.

The public realm should:

1. Respect and honour the history of the neighbourhood and integrate it into the public realm.
2. Expand and build on the use of laneways for a variety of activities.
3. Provide support for walking, cycling and use of public transit as the preferred modes of travel.
4. Improve the character and quality of the existing green and park spaces and their connectivity.
5. Create new public spaces that are adaptable, flexible and that support the diverse needs of the neighbourhood.
6. Maintain and encourage a safe and active Street life.
7. Facilitate spontaneous and eclectic intervention and acknowledge it as a key component of the neighbourhood's character.
8. Celebrate and reinforce the uniqueness of Mount Pleasant.
9. Your ideas???



Lower Main Street (2nd Ave to 7th Ave)



View Corridor, Alley east of Scotia Street



Community Garden, 4th Ave and Scotia Street



View Corridor, Alley west of Main Street



Alley west of Main Street



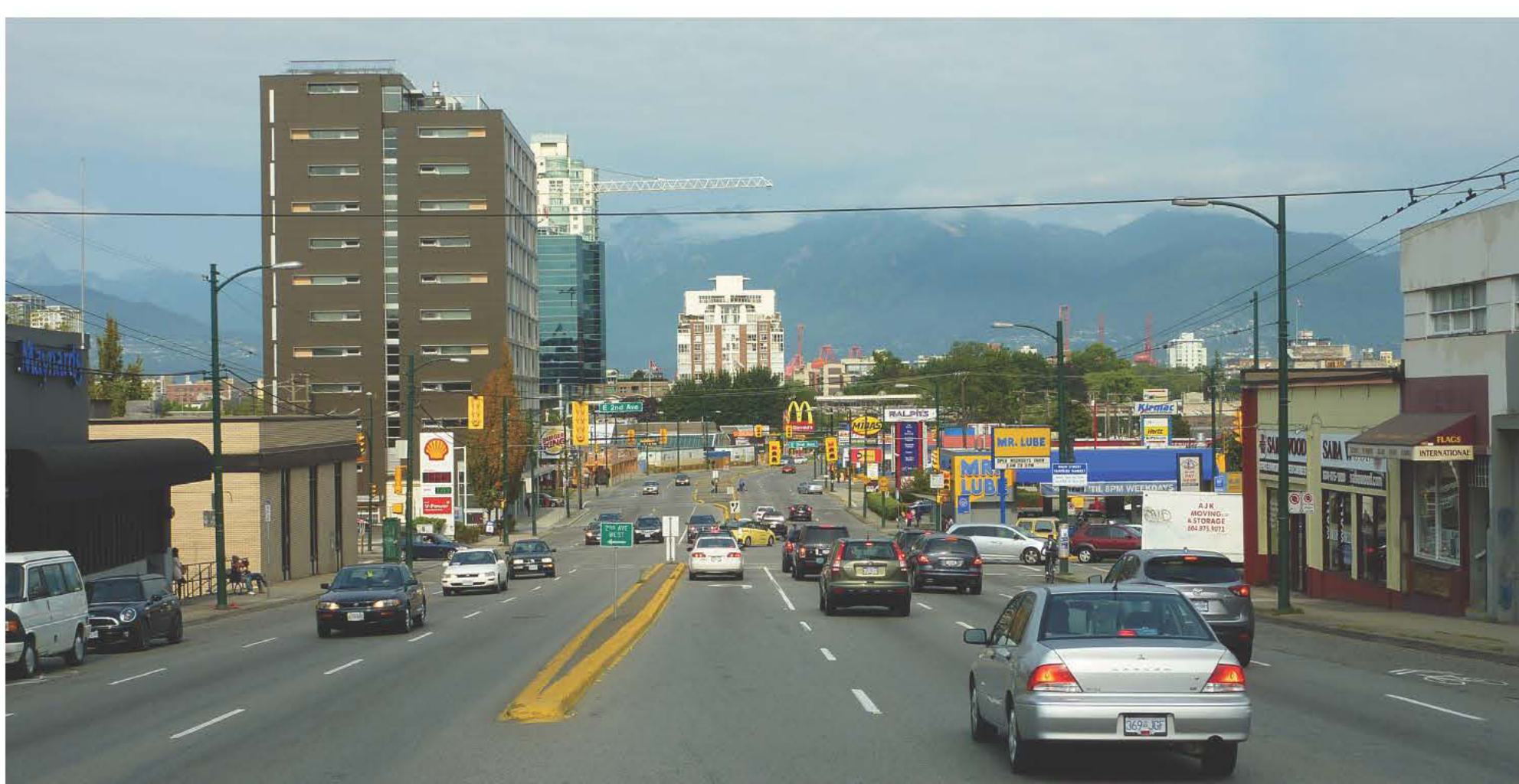
Pocket Park, 6th Ave and Scotia Street



NEC Native Education College, 5th Ave and Scotia Street



Office Building, Quebec Street and 3th Ave



View Corridor, Main Street and 2nd Ave



Commercial Building, Main Street looking South



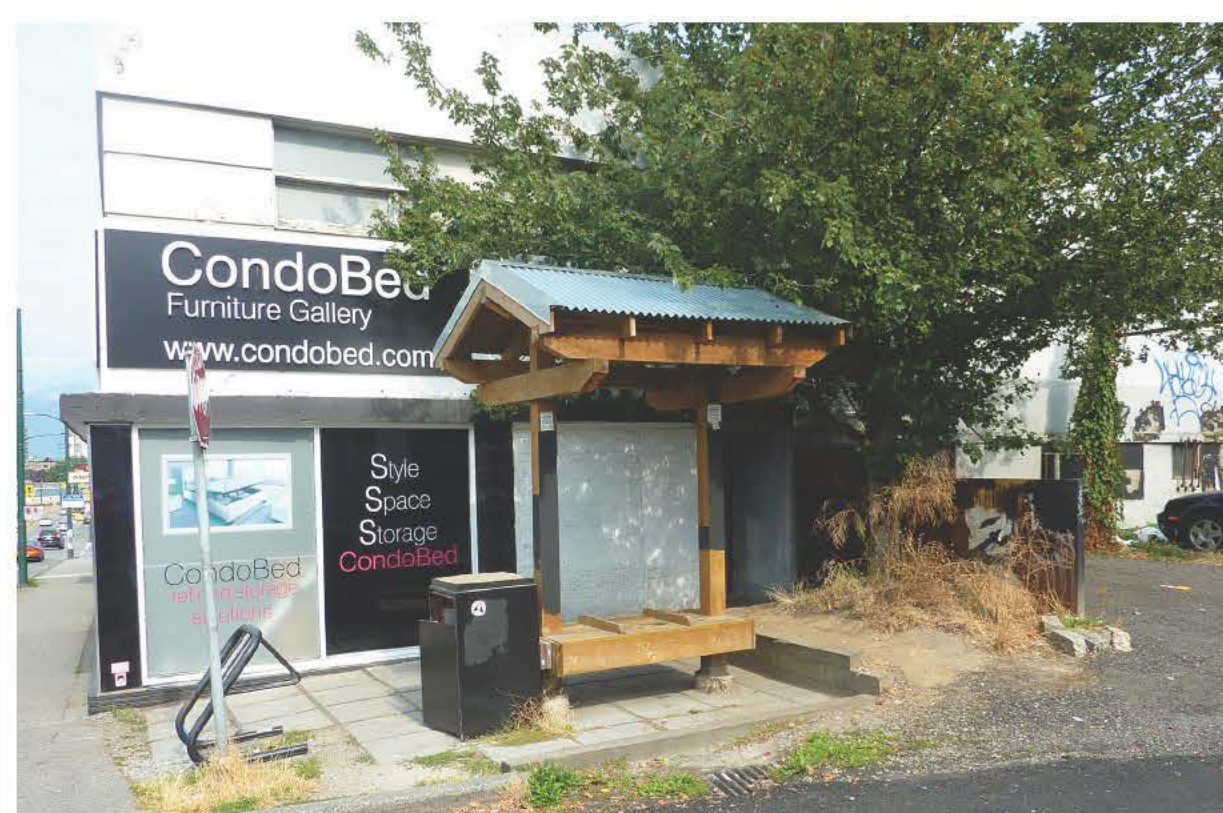
Alley West of Scotia Street



Evergreen Tree, Alley West of Scotia Street



Alley west of Main Street



Pocket Park, 3rd Ave and Main Street



Commercial Unit, 3rd Ave and Main Street



Community Garden, 4th Ave and Scotia Street



Residential Unit, 7th Ave and Scotia Street



Commercial and Residential Building, 6th Ave and Main Street



Parking Lot, 7th Ave and Main Street



South View, 7th Ave and Main Street



3rd Ave and Main Street



Main Street



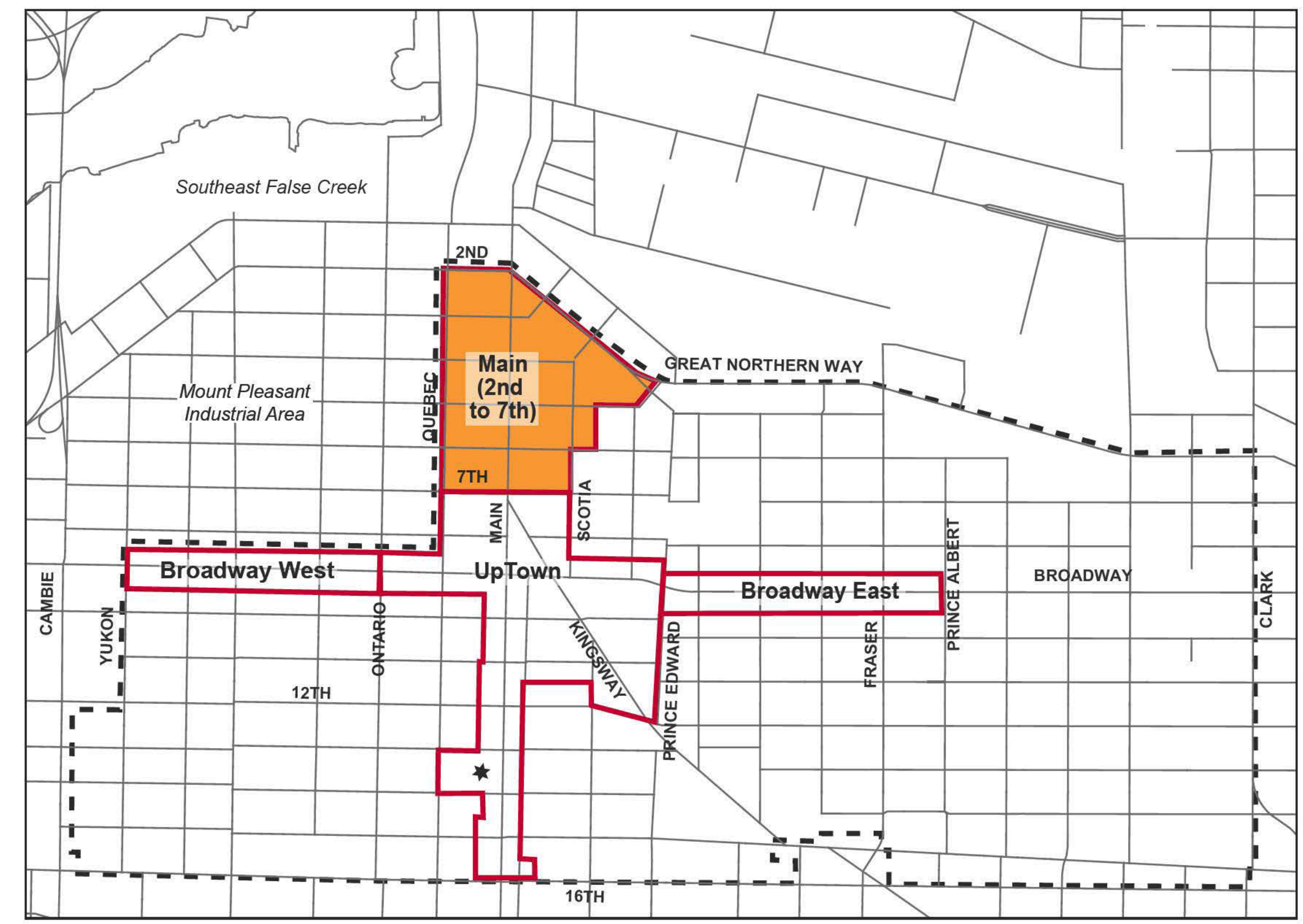
7th Ave and Main Street

FOR MORE INFORMATION on the Mount Pleasant Community Plan and the implementation program, visit vancouver.ca/mountpleasant





Lower Main Street (2nd Ave to 7th Ave)



View Corridor, 5th Ave and Main Street



2nd Ave and Main Street



Pocket Park, 3rd Ave and Main Street



Alley west of Main Street



Alley west of Main Street



Residential building, 3rd Ave and Main Street



Shop facade, 7th Ave and Main Street



5th Ave and Scotia Street



Street Tree, 6th Ave and Main Street



Kingsway and Main Street



Alley west of Scotia Street



Western Front, 8th Ave and Scotia Street



Motor Hotel, 6th Ave and Main Street



7th Ave and Main Street



View Corridor, 3rd Ave and Main Street



First Nation Monument, 5th Ave and Scotia Street



Commercial Building, 3rd Ave and Main Street



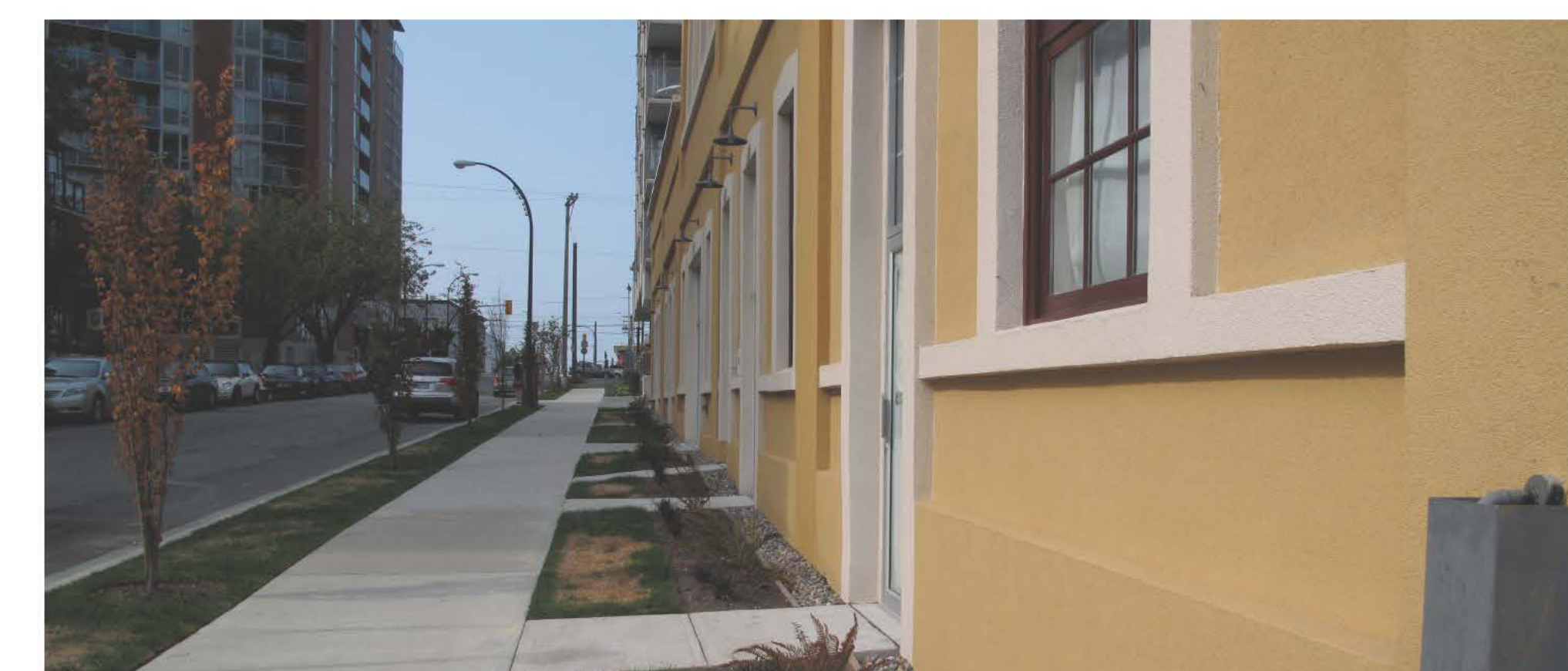
Alley south of 2nd Ave



Patio, Alley south of 2nd Ave



View Corridor, 2nd Ave and Main Street



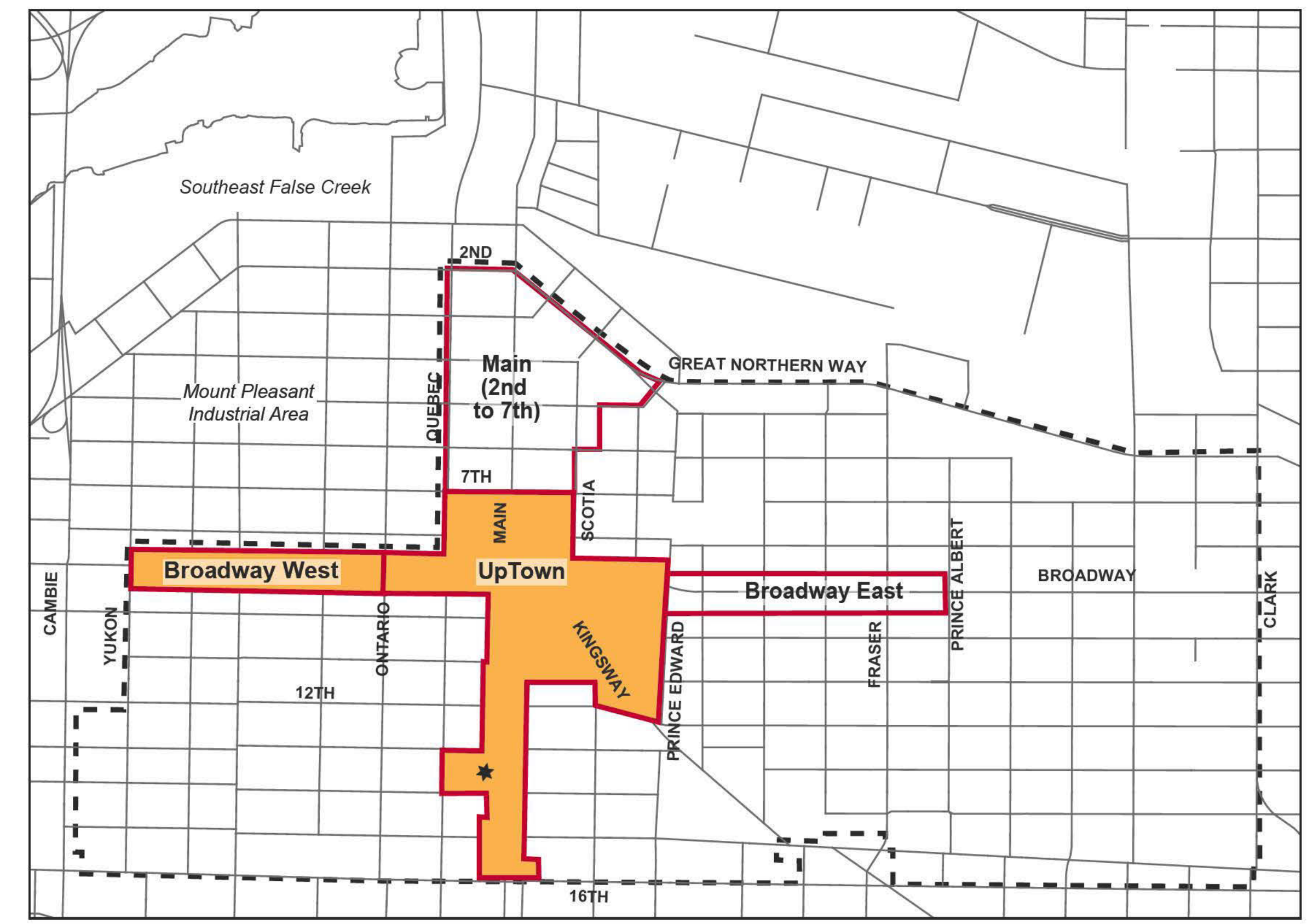
7th Ave and Scotia Street

FOR MORE INFORMATION on the Mount Pleasant Community Plan and the implementation program, visit vancouver.ca/mountpleasant





Public Realm: Uptown/Broadway west



Alley, 10th Ave and Watson Street



Alley, east of Main Street



Parking Lot, Broadway



Streetscape, Broadway and Ontario Street



Streetscape, 8th Ave and Kingsway



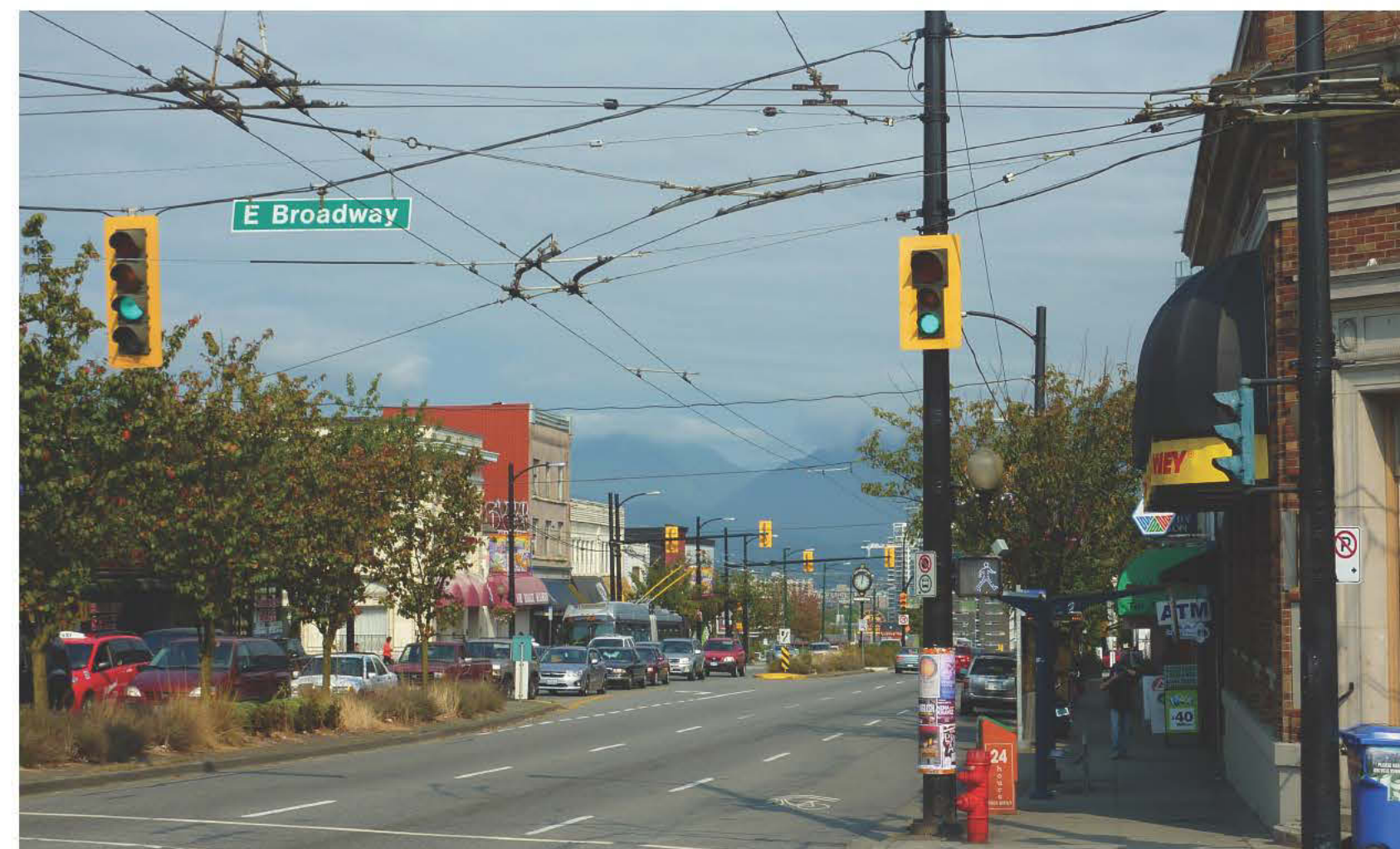
View Corridor, Broadway and Ontario Street



12th Ave and Kingsway



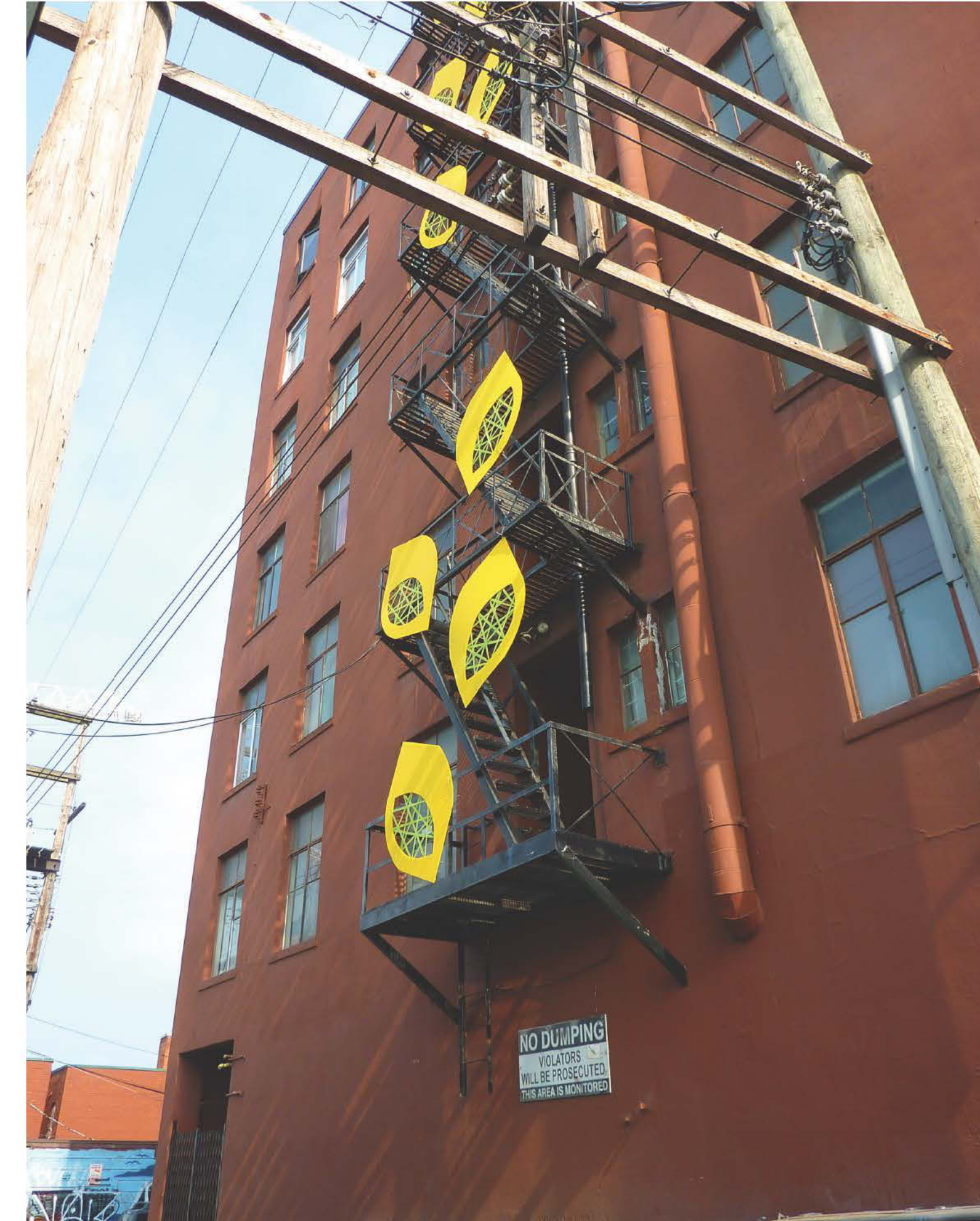
Streetscape, 11th Ave and Main Street



Broadway and Main Street



Kingsway and Main Street



Public Art, Alley west of Main Street



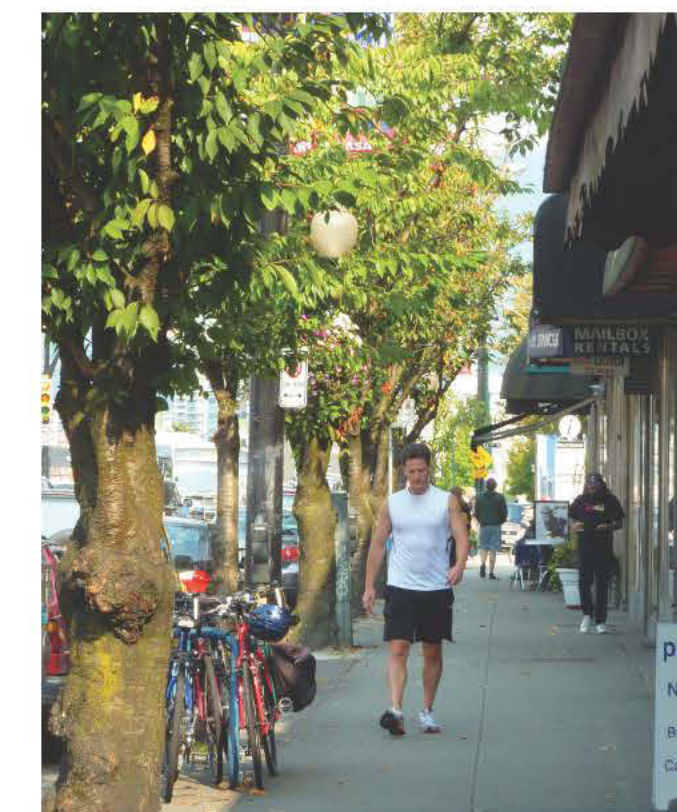
Commercial building, 8th Ave



Pocket Park, Broadway and Quebec Street



Pocket Park, 14th Ave and Main Street



Streetscape, Main Street and Broadway



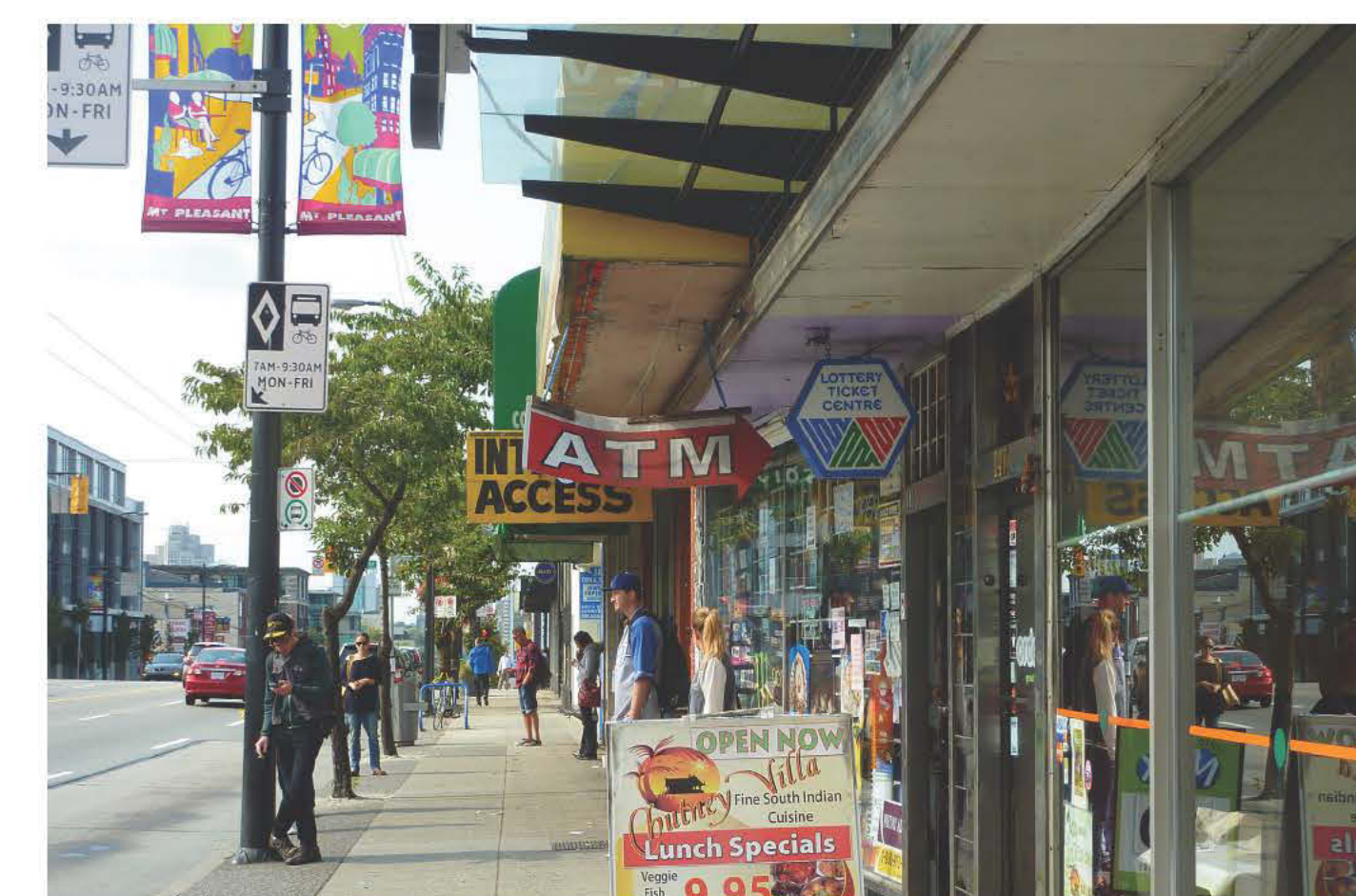
Patio, 8th Ave and Main Street



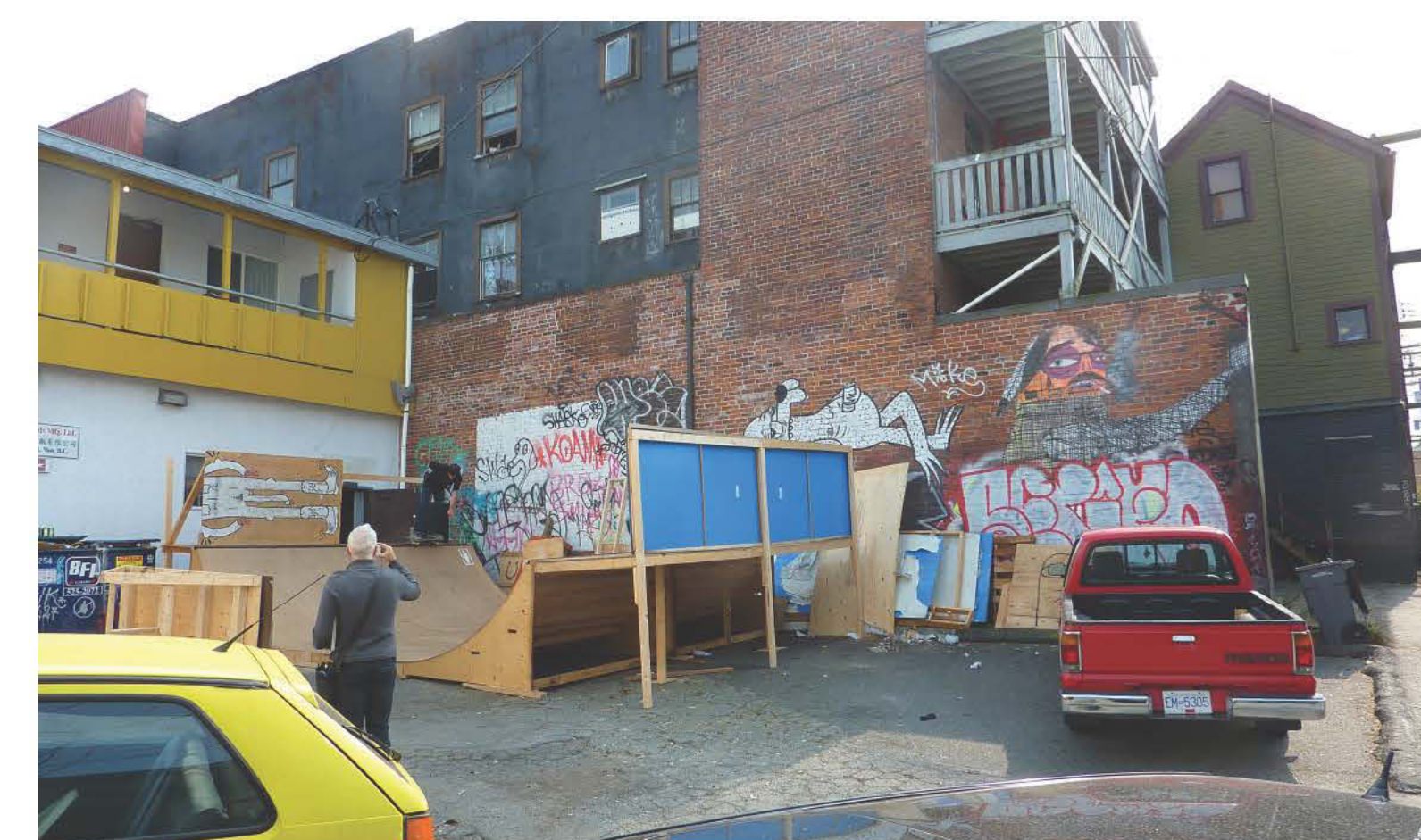
Heritage Hall, 15th Ave and Main Street



Patio, 12th Ave and Main Street



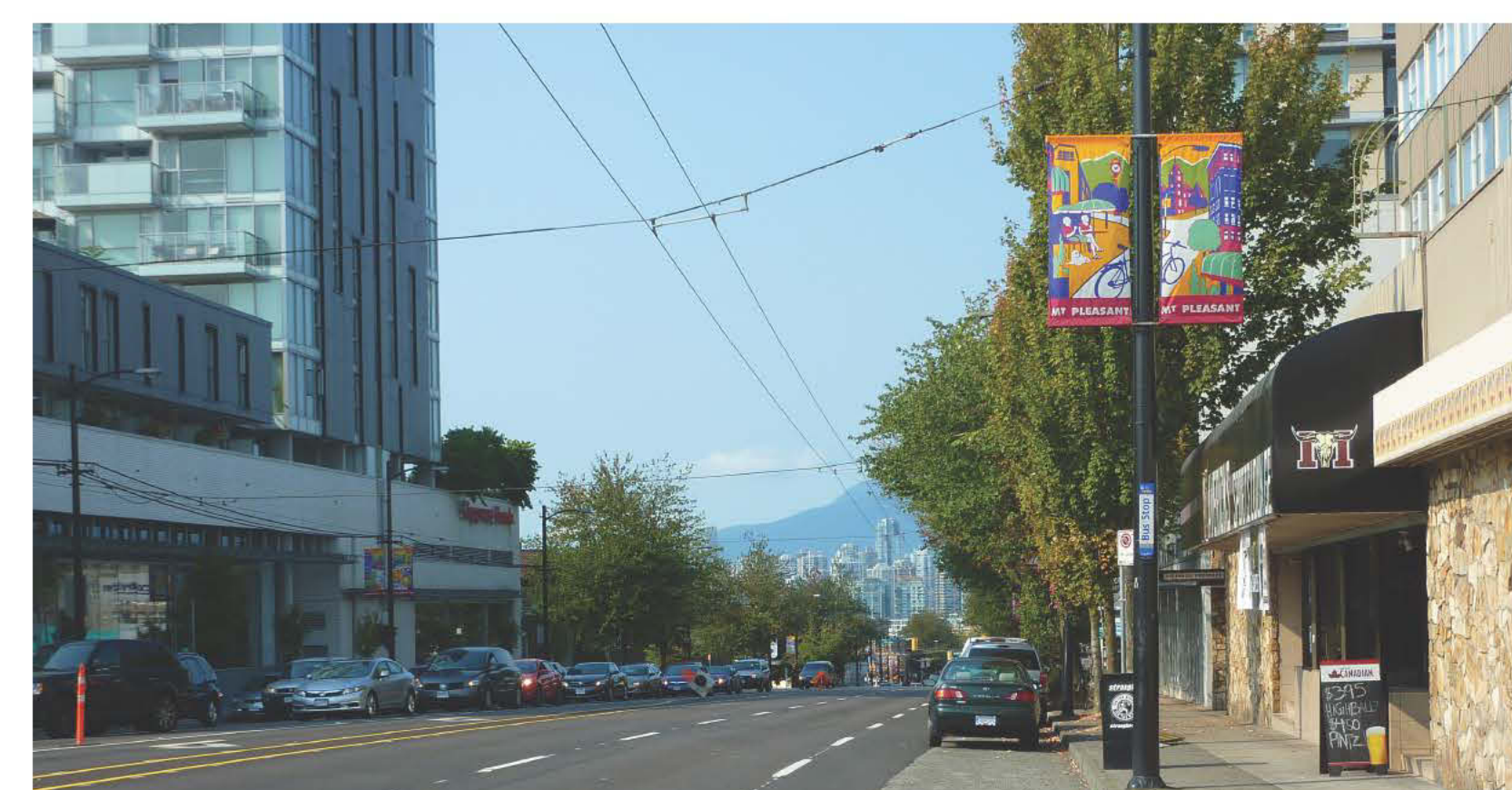
Broadway west of Main Street



Alley West of Main Street



Broadway and Alberta Street



Kingsway and 12th Ave



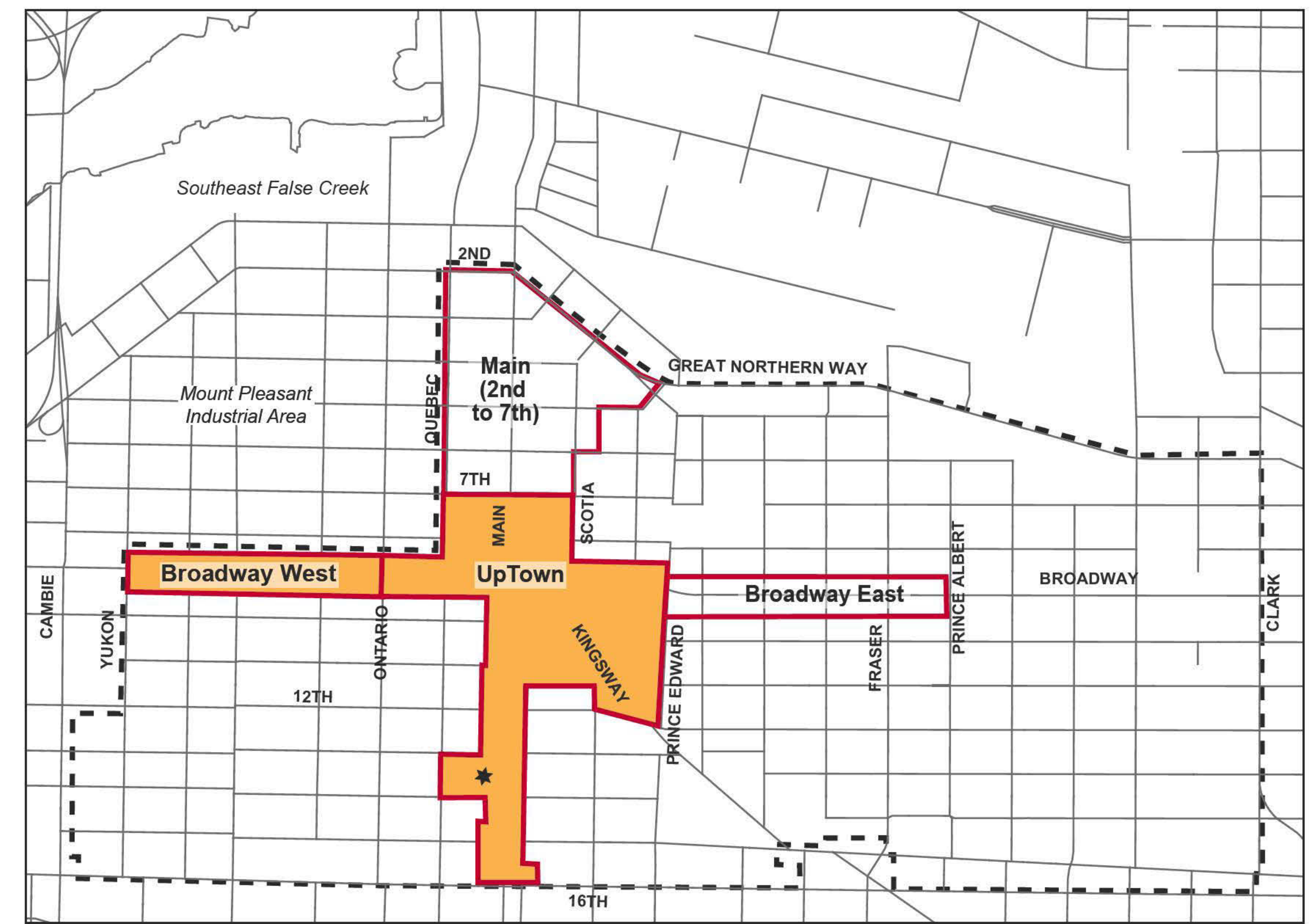
12th Ave and Sophia Street

FOR MORE INFORMATION on the Mount Pleasant Community Plan and the implementation program, visit vancouver.ca/mountpleasant





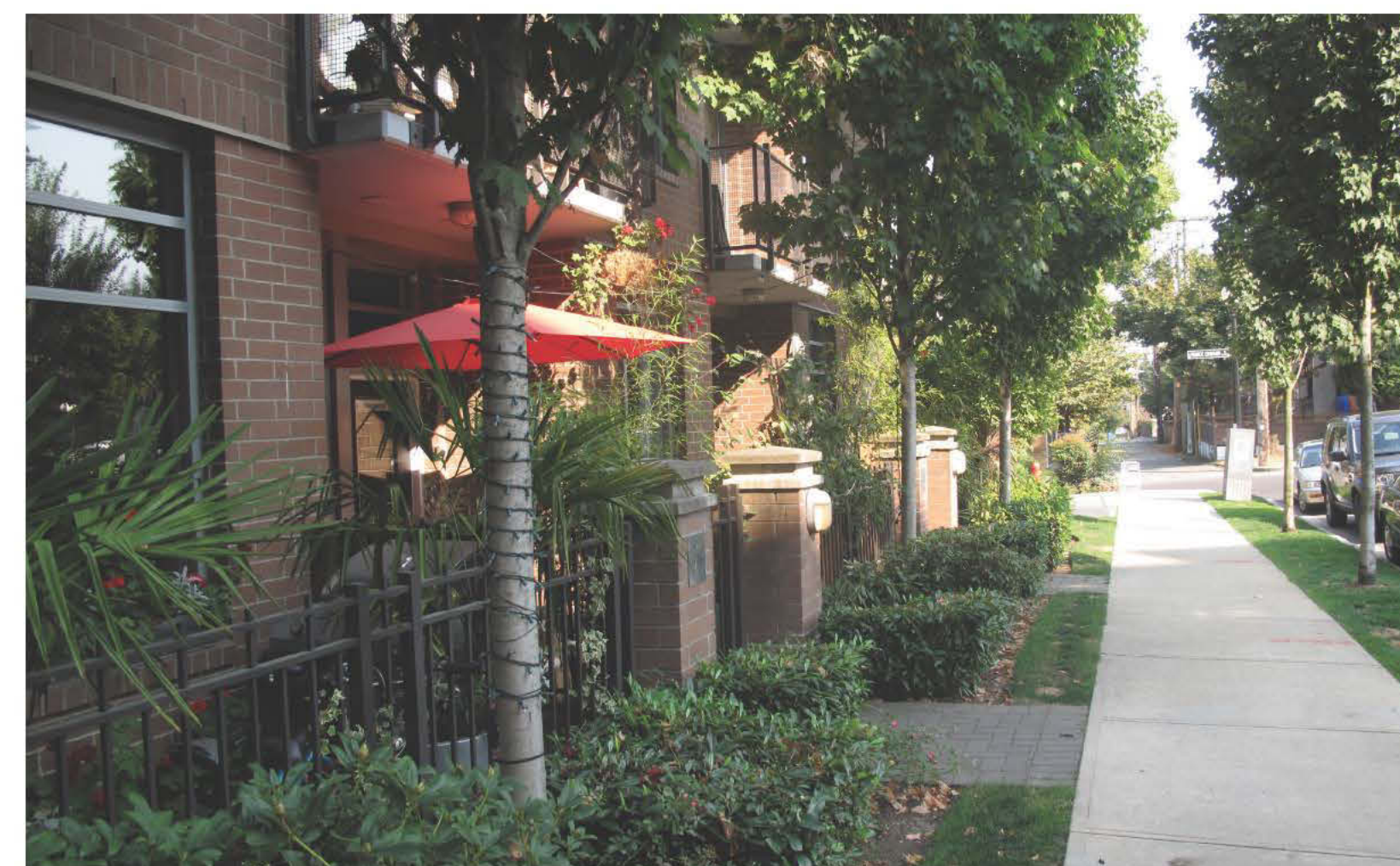
Public Realm: Uptown/Broadway west



Alley west of Main Street



Broadway and Main Street



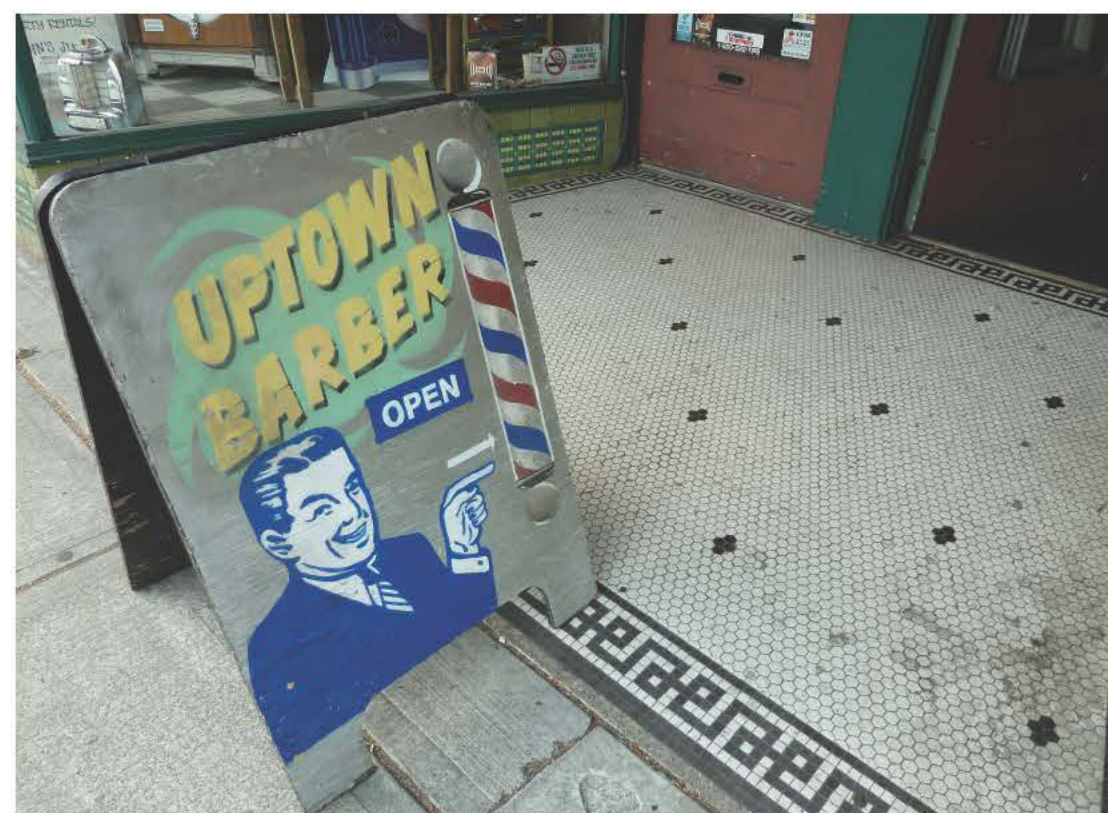
Streetscape, 11th Ave



Rain Garden, 11th Ave and Prince Edward



View Corridor, Watson Street



Main Street Barber shop



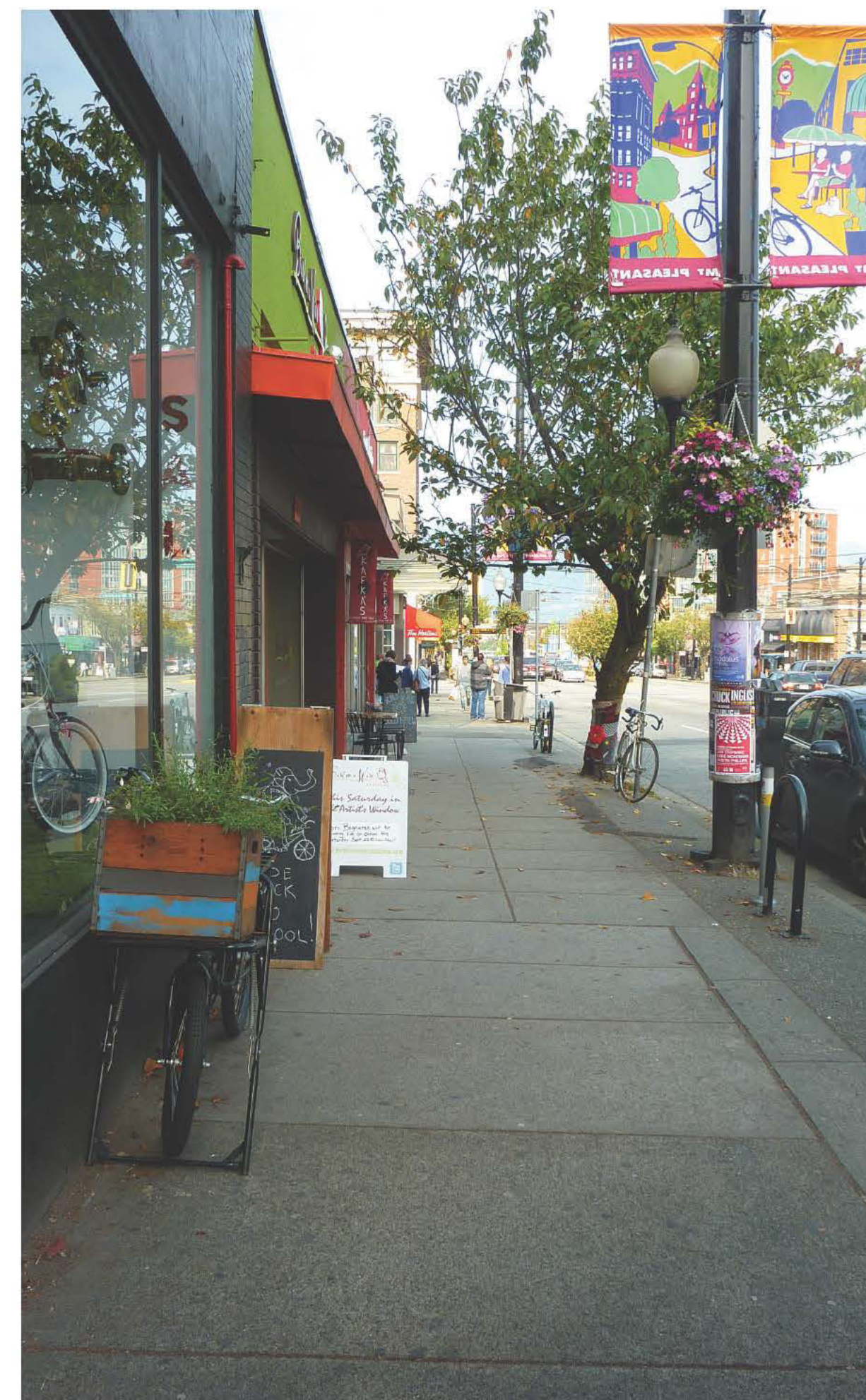
Broadway and Kingsway



Streetscape, 10th and Main Street



Pocket Park, Sophia and 11th Ave



Streetscape, 10th Ave and Main Street



Alley West of Main Street



Commemorative sign, 12th Ave and Main



Community center, Kingsway and 8th Ave



Patio, 15th Ave and Main Street



Streetscape, 13th Ave and Main Street



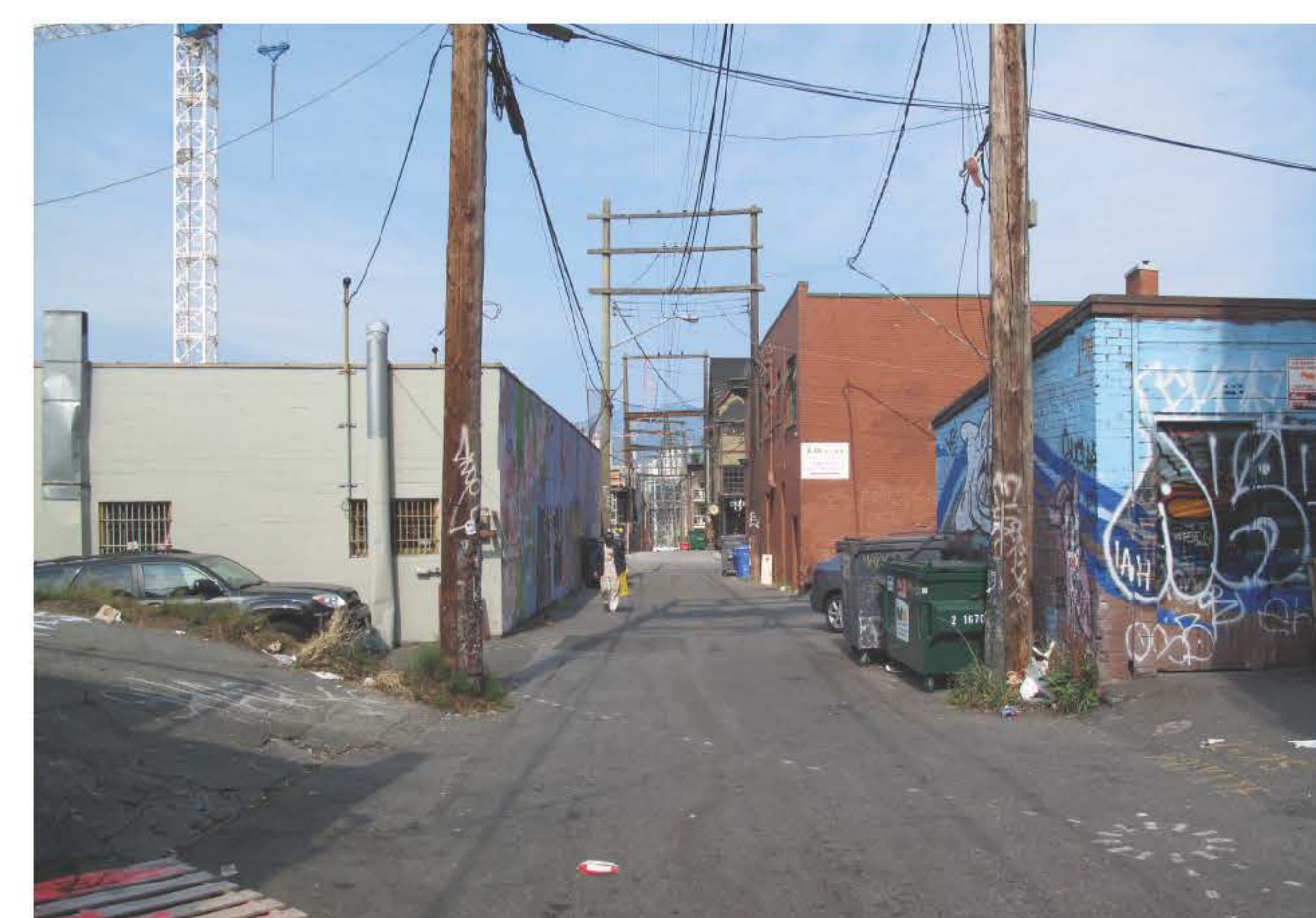
Street Tree, Kingsway and 8th Ave



Cover Sidewalk, Broadway and Main Street



Patio, 12th and Main Street



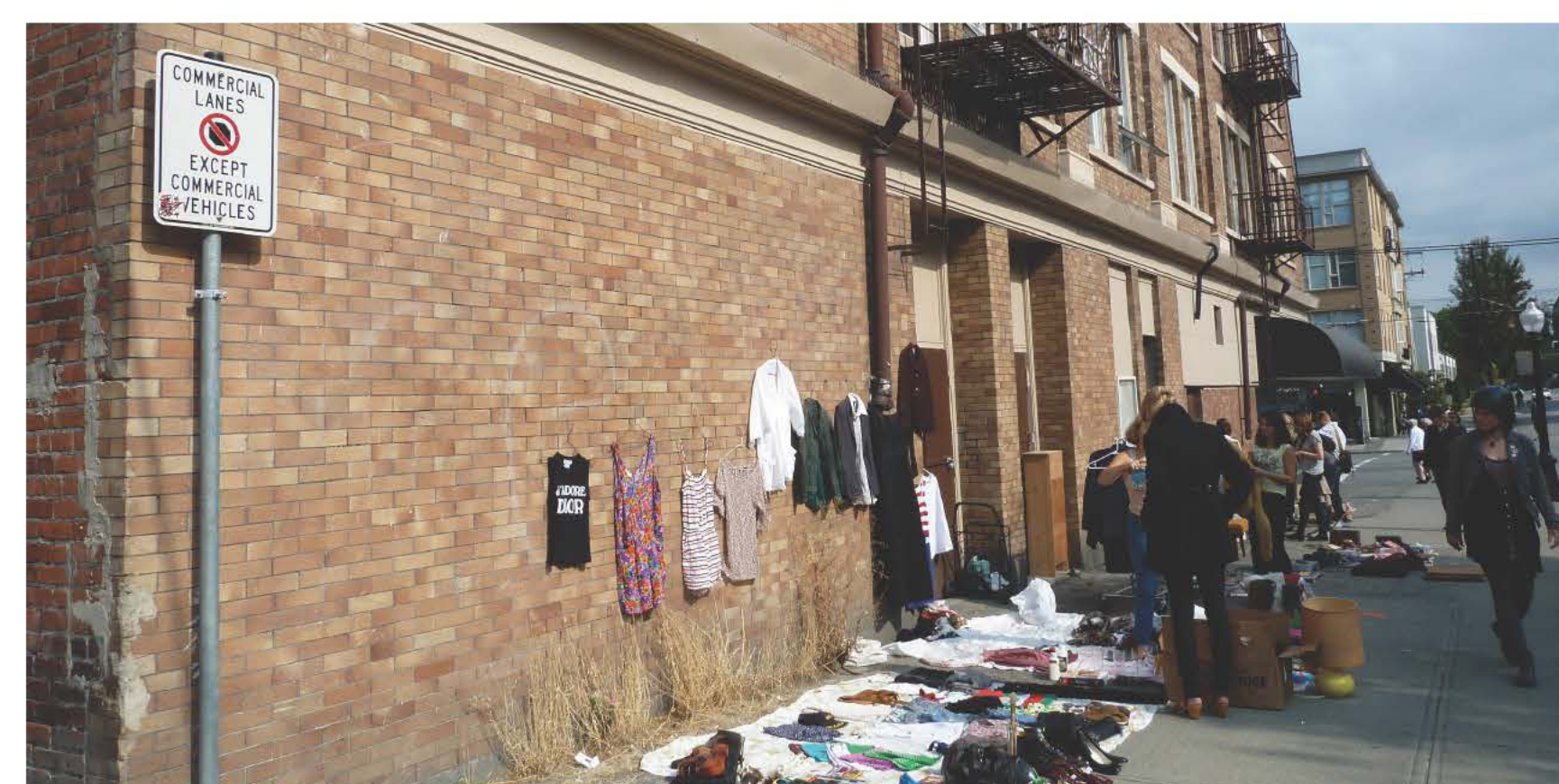
Alley West of Main Street



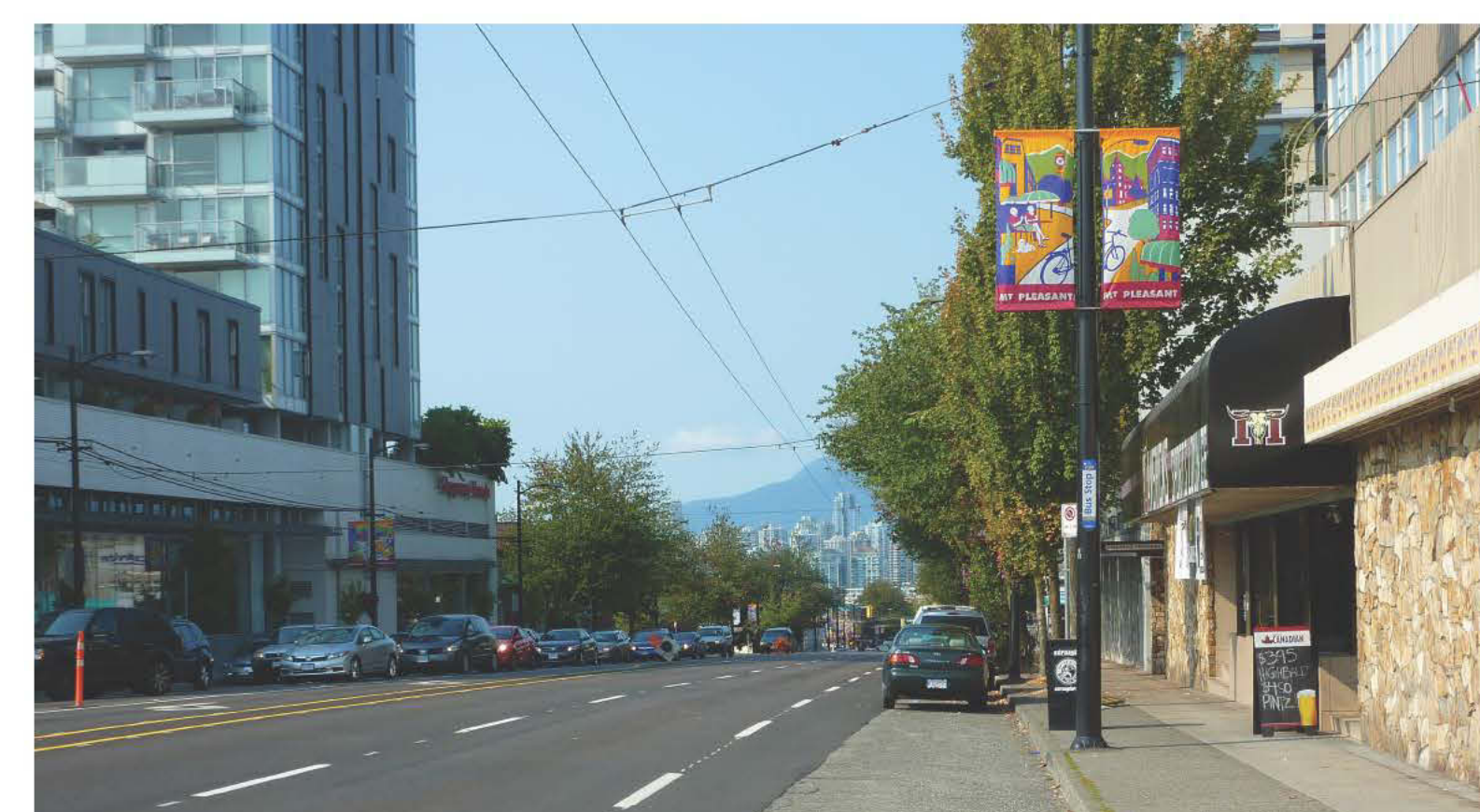
Kingsway and Main Street



Bus Stop, Broadway and 12th Ave



10th Ave and Main Street



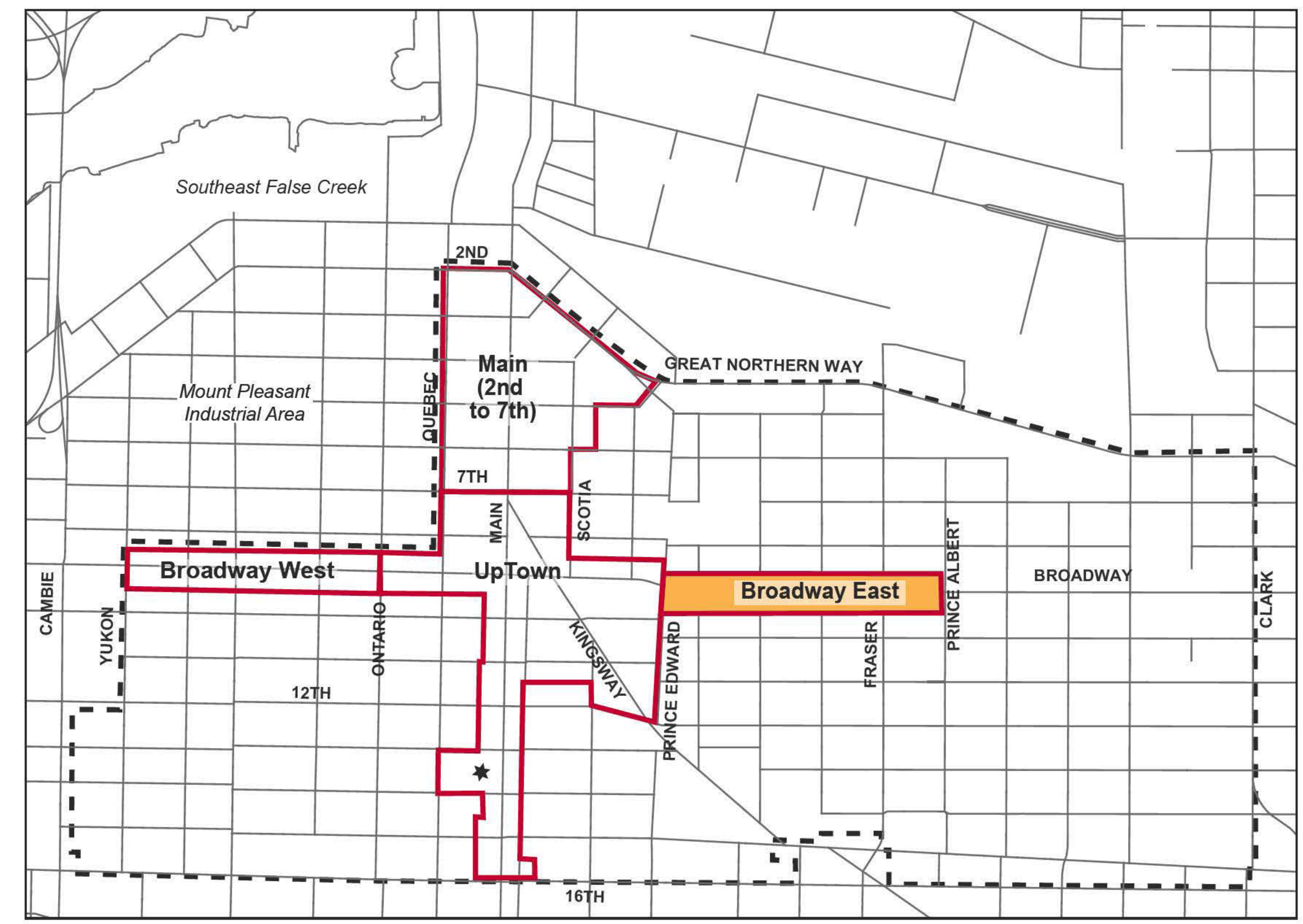
Kingsway and 12th Ave Looking north

FOR MORE INFORMATION on the Mount Pleasant Community Plan and the implementation program, visit vancouver.ca/mountpleasant





Broadway East (Between Prince Edward St. and Prince Albert St.)



Broadway East and Prince Edward Street



Streetscape, Broadway east



Streetscape, Broadway East



Commemorative plate, Broadway east and Kingsway



Art Gallery, Broadway east



Prince Albert Street



Broadway East and Fraser Street Looking west



Streetscape, Broadway east at Kingsgate Mall



Streetscape, Broadway east at Kingsgate Mall



Streetscape, Broadway east



Streetscape, Broadway east at Kingsgate Mall



Empty lot, Broadway east



Empty lot, Broadway east



Empty lot, Broadway east



Streetscape, Broadway east



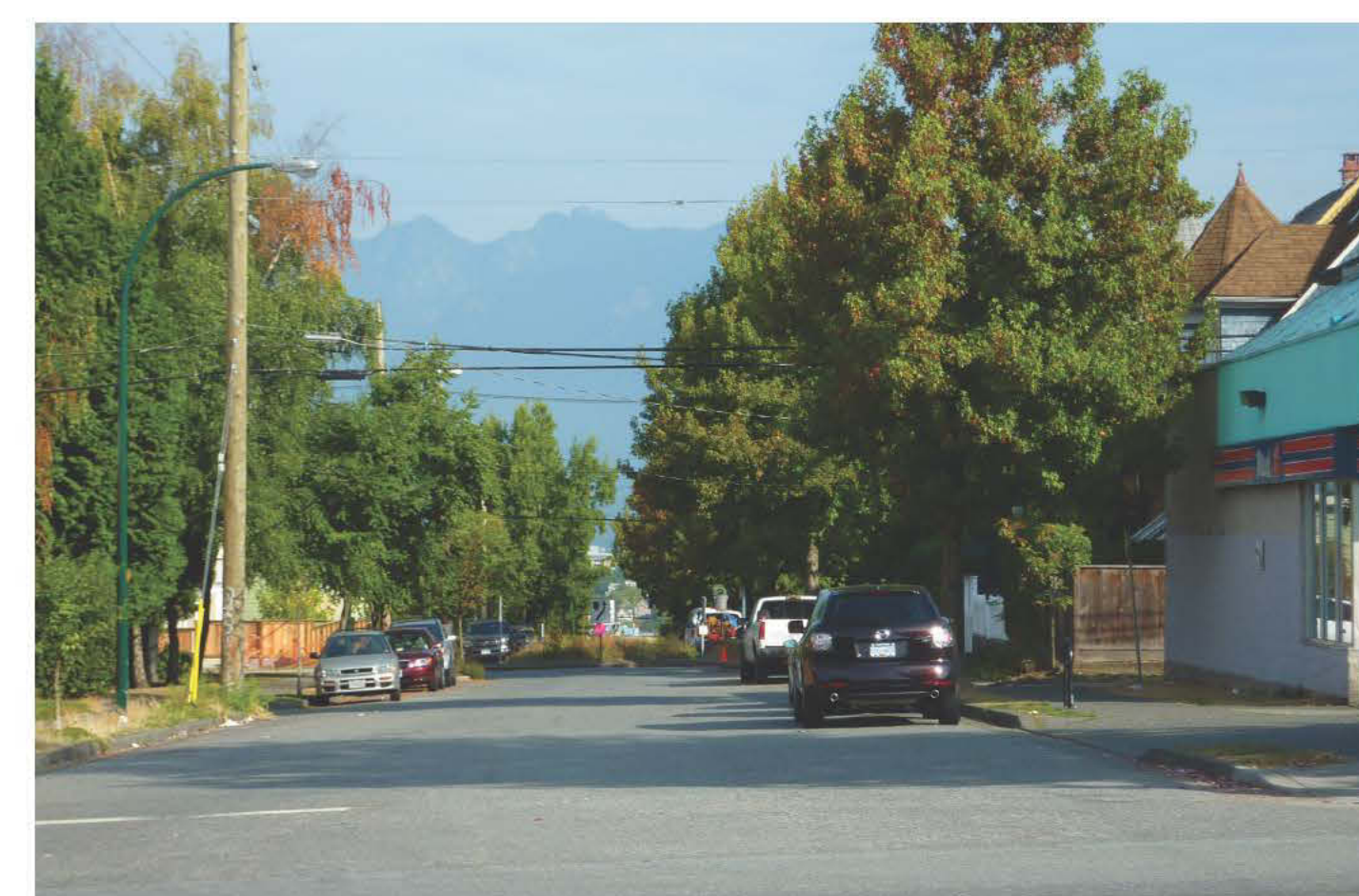
View Corridor, Broadway east and Guelph Street



Prince Albert St. looking north



Streetscape, Broadway east



View Corridor, Carolina looking south



Streetscape, Broadway east



Mural, Fraser and Broadway east



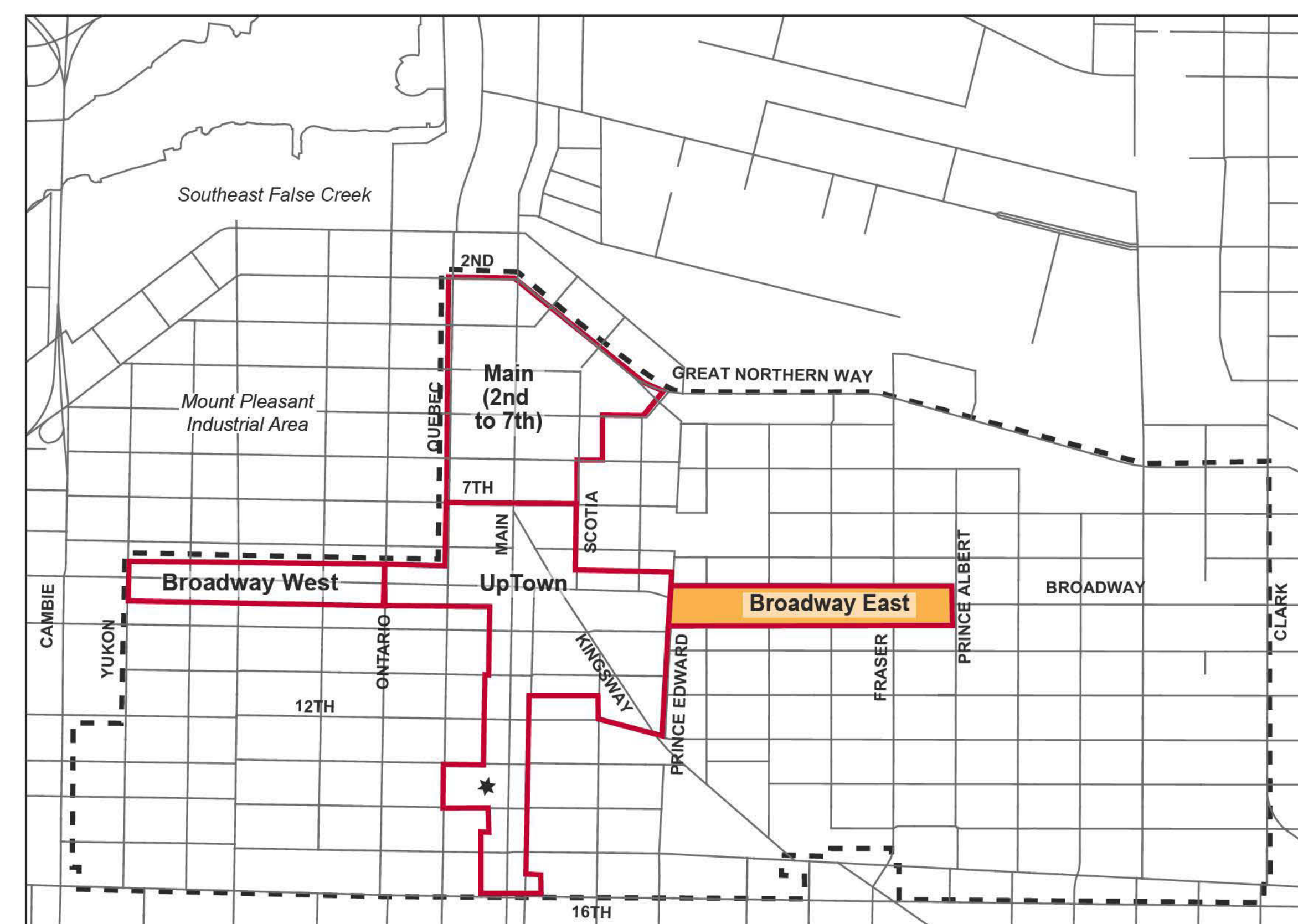
Broadway East and Brunswick Looking west

FOR MORE INFORMATION on the Mount Pleasant Community Plan and the implementation program, visit vancouver.ca/mountpleasant

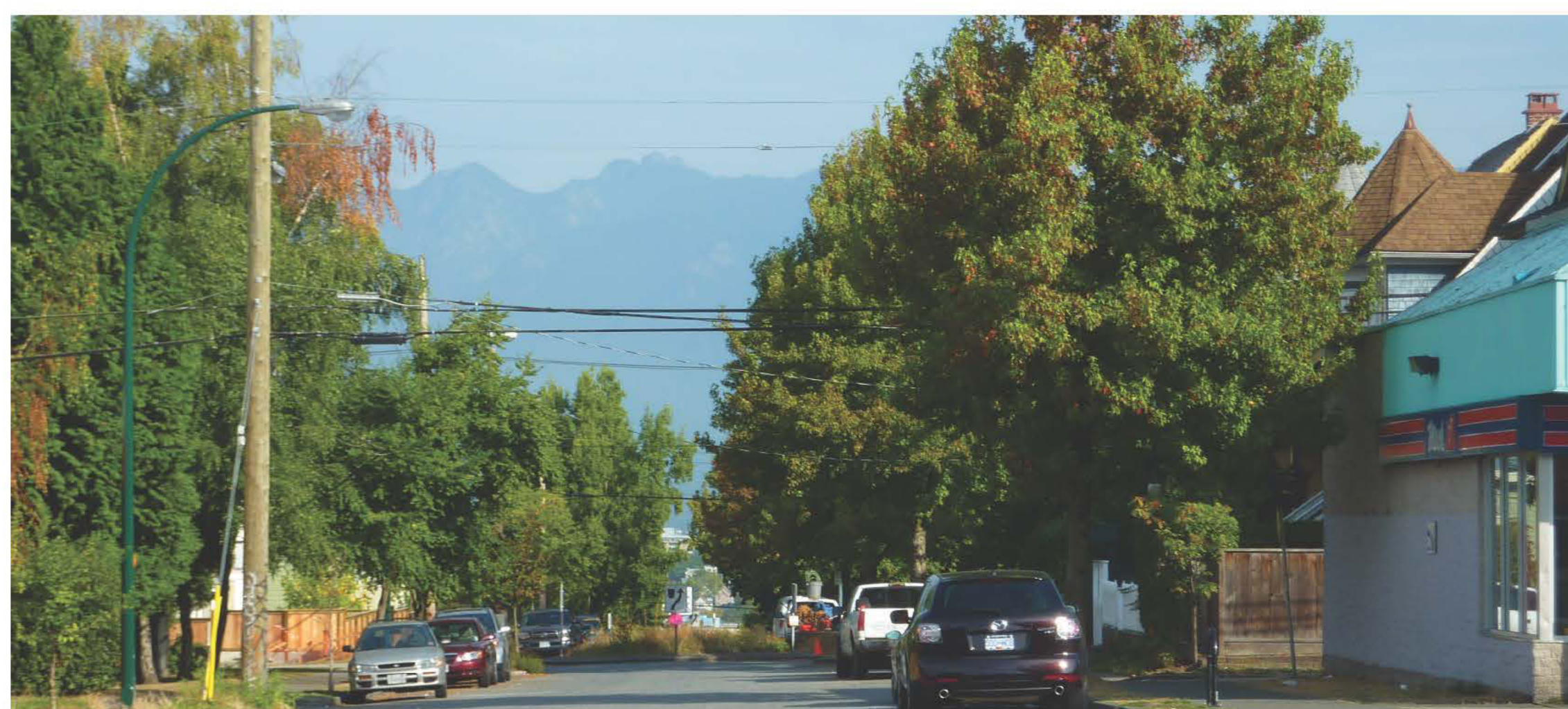




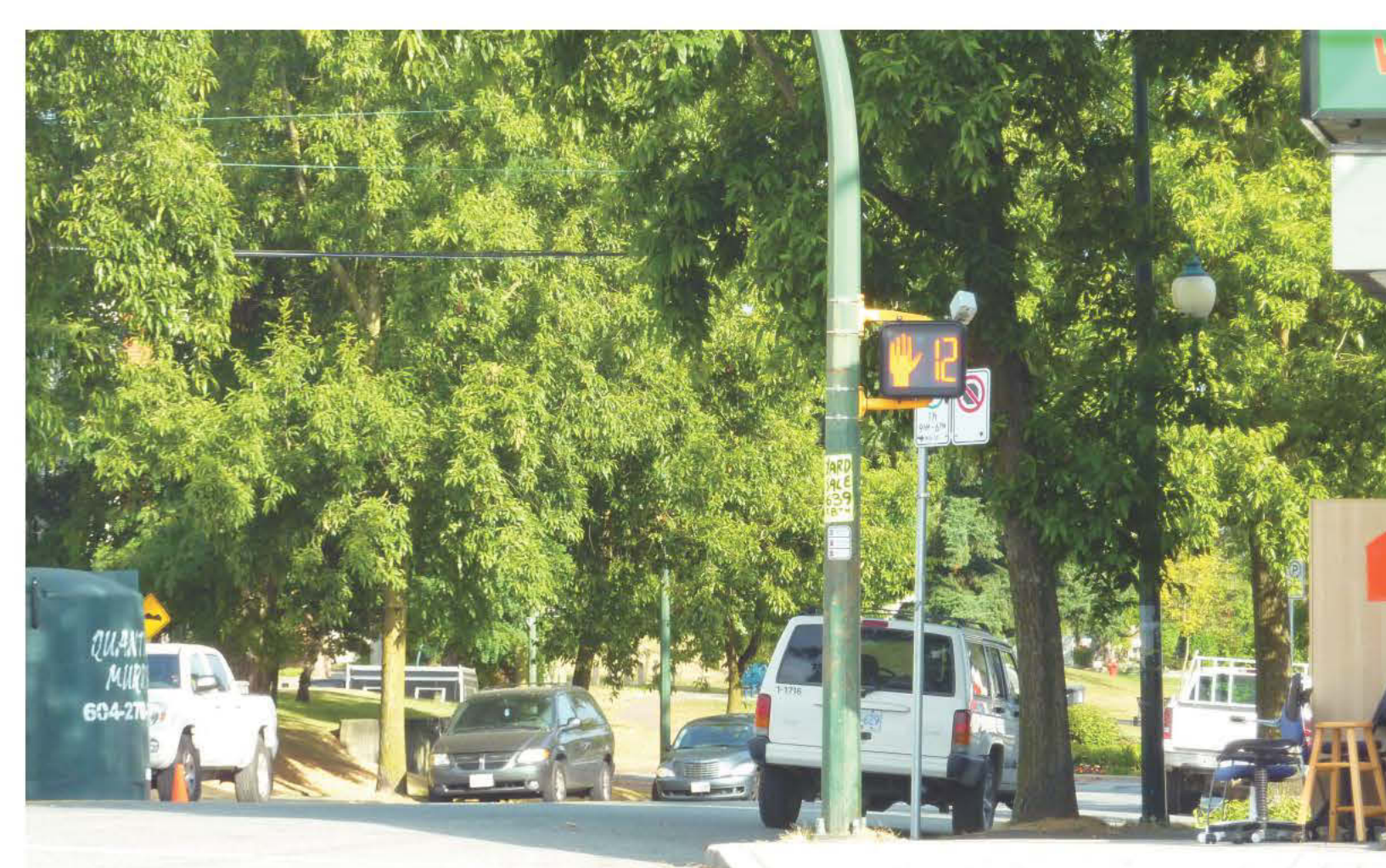
Broadway East (Between Prince Edward St. and Prince Albert St.)



Broadway east and Fraser Street



Carolina Street looking north



Broadway east and Fraser



Broadway east and Fraser



Prince Edward Street looking north



Broadway east and Fraser Street



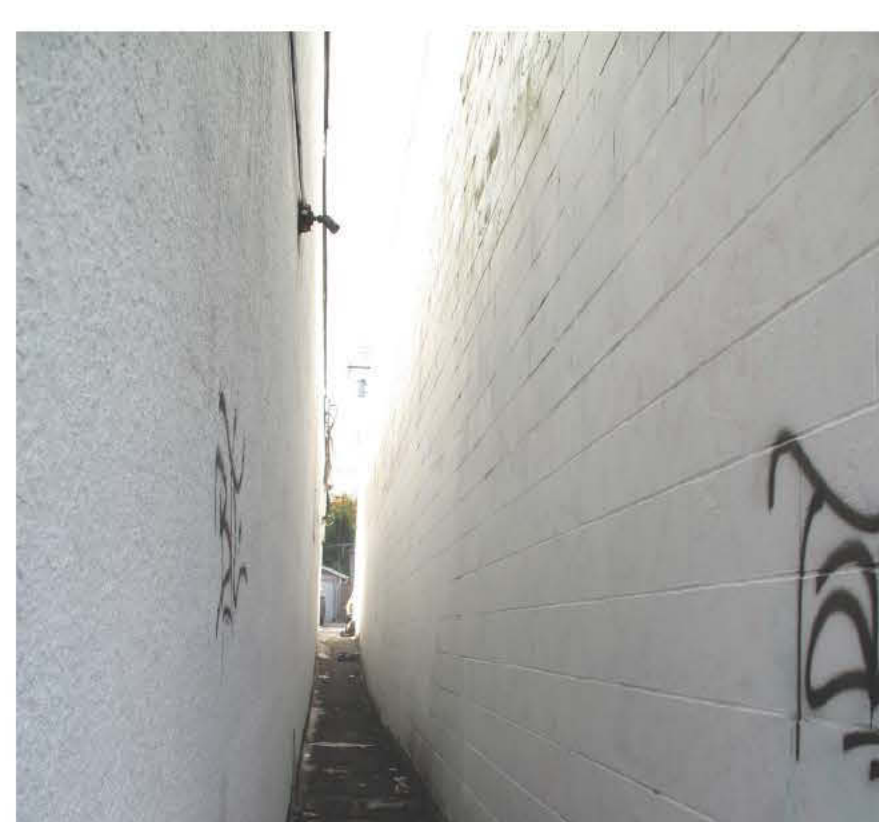
Fraser Street looking north



Mt. Pleasant Neighbourhood House, Broadway East and Prince Albert Street



Broadway east



Broadway east



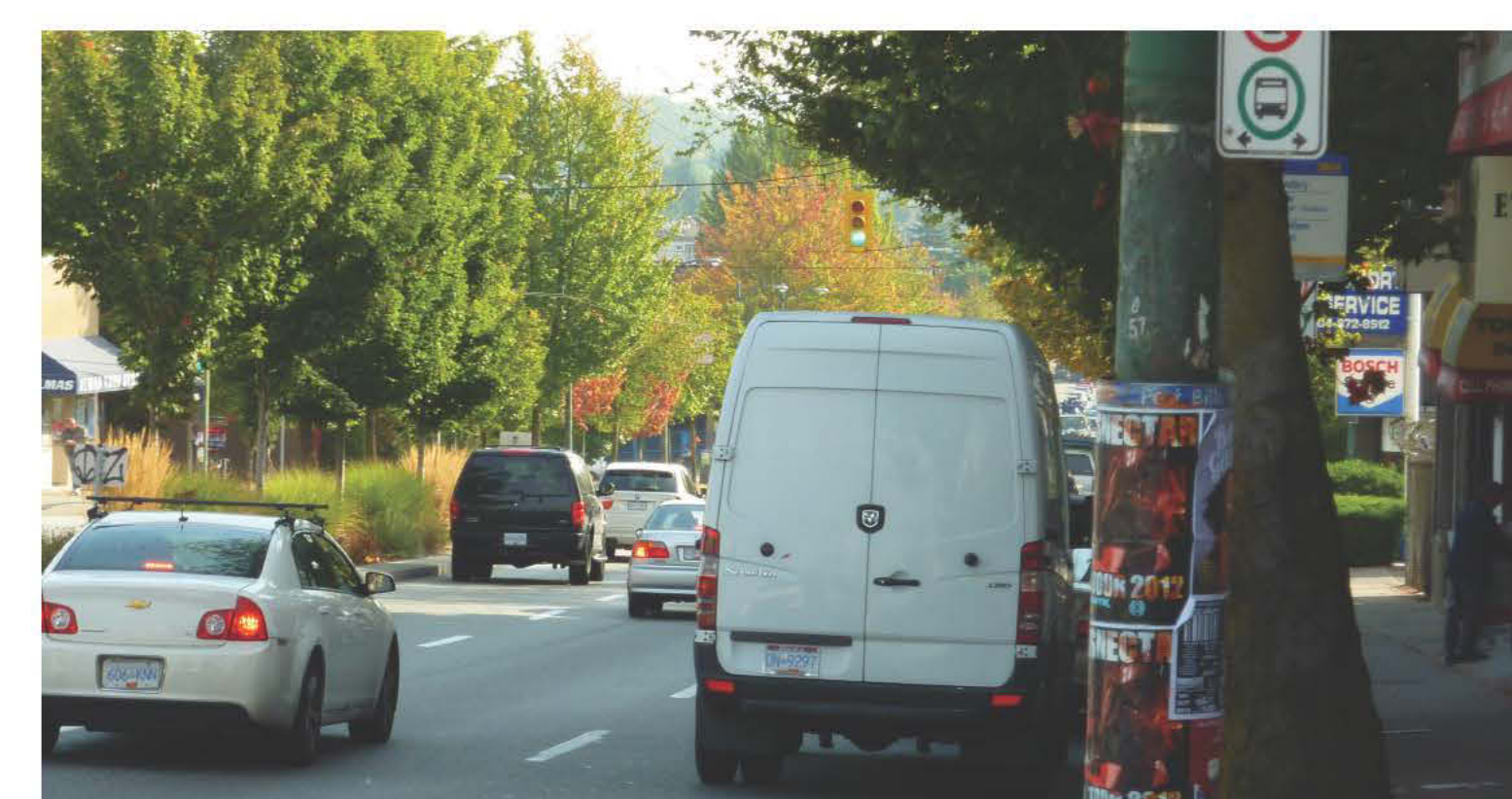
Median Lane, Broadway east



Broadway east and Prince Albert Street



Broadway east and Guelph Street



Broadway east and Prince Albert Street



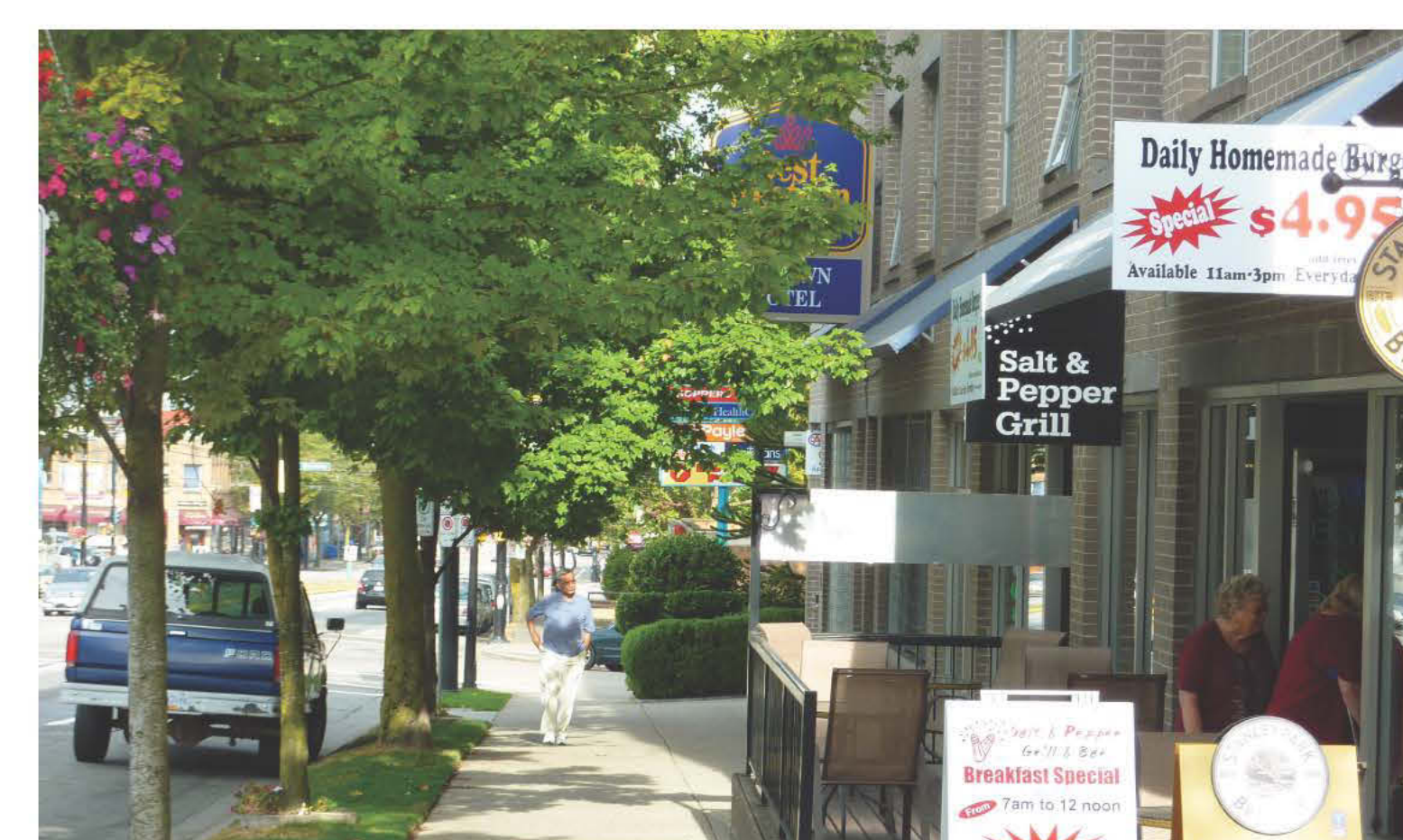
Broadway east and Carolina Street



Streetscape, Prince Albert Street



Broadway east and Carolina Street



Kingsway Street



Broadway east and Prince Edward Street



Broadway east and St Georges Street

FOR MORE INFORMATION on the Mount Pleasant Community Plan and the implementation program, visit vancouver.ca/mountpleasant

