

DRAWING LIST

- L000 OVERALL PLAN
- L001 TREE PROTECTION PLAN
- L100 KENT ST ARRIVAL PLAZA (REMOVED FROM SUBMISSION)
- L101 WEST KENT AVENUE MULTI-USE PATH
- L102 LAUREL STREET END ENHANCEMENT (REMOVED FROM SUBMISSION)
- L103 FORESHORE ENHANCEMENT (REMOVED FROM SUBMISSION)
- L104 ASH ST WATERFRONT CONNECTION (REMOVED FROM SUBMISSION)
- L105 OPERATIONS BUILDING 3rd FLOOR LANDSCAPE PLAN
- L106 OPERATIONS BUILDING 3rd FLOOR PLANTING PLAN
- L400 LANDSCAPE DETAILS
- L500 LANDSCAPE SECTIONS

ISSUED FOR  
DEVELOPMENT PERMIT  
2022-12-19



DESIGNED	BL / TC	DATE	REFERENCE DRAWING				REVISIONS				REVISIONS			
			NUMBER	DESCRIPTION	DATE	BY	DESCRIPTION	REV	DATE	BY	DESCRIPTION	REV	DATE	BY
DRAWN	BL	DATE			2022-12-19	BL	ISSUED FOR DEVELOPMENT PERMIT							
CHECKED	BL / TC	DATE												
APPROVAL	TC	DATE												

NOT FOR CONSTRUCTION

ARCHITECTURE 49

1015 WEST GEORGIA, SUITE 210  
VANCOUVER, BRITISH COLUMBIA V6E 3C9  
Phone: 604-736-5229 | WWW.ARCHITECTURE49.COM

wsp

1000-800 HOWE STREET  
VANCOUVER, BRITISH COLUMBIA  
CANADA V6Z 2M1  
PHONE: 604-685-9381  
WWW.WSP.COM

TRANS LINK

SOUTH COAST BRITISH COLUMBIA  
TRANSPORTATION AUTHORITY (SCBCTA)  
400 - 287 Nelson's Court,  
New Westminster, B.C. V3L 0E7

CONTRACT NO. 182009-01

MARPOLE TRANSIT CENTRE

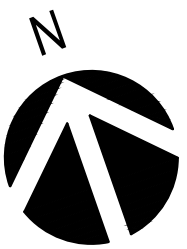
DRAWING LIST AND OVERALL PLAN

SCALE  
1:750

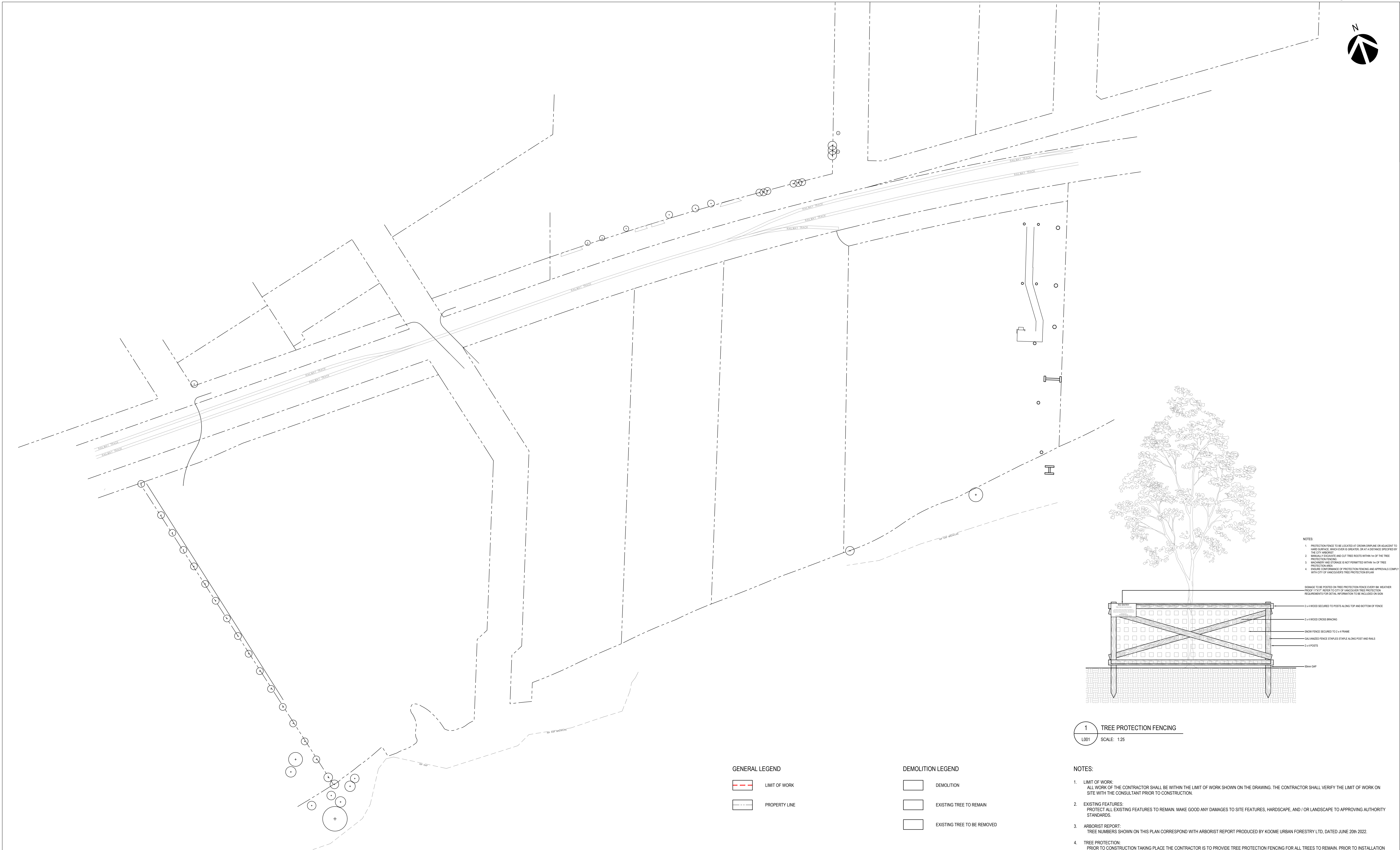
DRAWING No.  
L000

REV. No.  
1

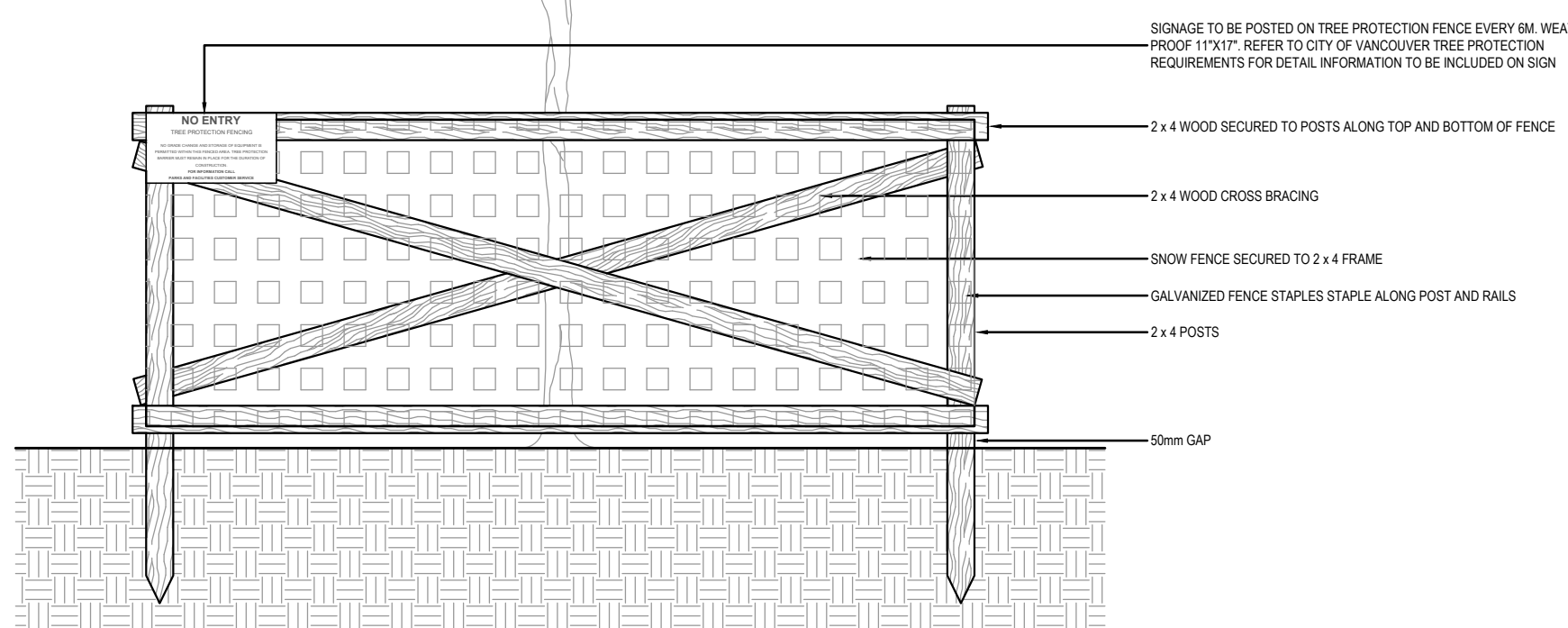




ELEC  
MECH  
STRUC  
CIVIL  
ARCH  
PM  
MGR  
DESIGN  
CLIENT



- NOTES:
1. PROTECTION FENCE TO BE LOCATED AT ONCE ON OR ADJACENT TO HARD SURFACE, WHICH EVER IS GREATER, OR AT A DISTANCE SPECIFIED BY THE CITY AND/OR THE CONTRACTOR.
  2. MANUALLY EXCAVATE AND CUT TREE ROOTS WITHIN 1m OF THE TREE PROTECTION FENCE.
  3. ENSURE COMPLIANCE OF PROTECTION FENCING AND APPROVALS COMPLY WITH CITY OF VANCOUVER TREE PROTECTION BYLAW.



1 TREE PROTECTION FENCING  
L001 SCALE: 1:25

GENERAL LEGEND

- LIMIT OF WORK  
--- PROPERTY LINE

DEMOLITION LEGEND

- DEMOLITION  
EXISTING TREE TO REMAIN  
EXISTING TREE TO BE REMOVED

NOTES:

1. LIMIT OF WORK:  
ALL WORK OF THE CONTRACTOR SHALL BE WITHIN THE LIMIT OF WORK SHOWN ON THE DRAWING. THE CONTRACTOR SHALL VERIFY THE LIMIT OF WORK ON SITE WITH THE CONSULTANT PRIOR TO CONSTRUCTION.
2. EXISTING FEATURES:  
PROTECT ALL EXISTING FEATURES TO REMAIN. MAKE GOOD ANY DAMAGES TO SITE FEATURES, HARDSCAPE, AND / OR LANDSCAPE TO APPROVING AUTHORITY STANDARDS.
3. ARBORIST REPORT:  
TREE NUMBERS SHOWN ON THIS PLAN CORRESPOND WITH ARBORIST REPORT PRODUCED BY KOOME URBAN FORESTRY LTD, DATED JUNE 20th 2022.
4. TREE PROTECTION:  
PRIOR TO CONSTRUCTION TAKING PLACE THE CONTRACTOR IS TO PROVIDE TREE PROTECTION FENCING FOR ALL TREES TO REMAIN. PRIOR TO INSTALLATION OF FENCING, THE LAYOUT SHOULD BE REVIEWED BY THE CONSULTANT. PROTECTION BARRIERS ARE TO BE INSTALLED AND REMAIN UPRIGHT AND IN PLACE THROUGHOUT THE ENTIRE CONSTRUCTION PROCESS.
5. UTILITIES:  
CONTRACTOR IS RESPONSIBLE FOR VERIFYING LOCATION OF ALL UNDERGROUND SERVICES PRIOR TO START OF WORK AND PLACING BC ONE CALL. PROTECTION TO BE PROVIDED AS REQUIRED.
6. DISPOSAL:  
UNLESS OTHERWISE STATED, REMOVAL INCLUDES DISPOSAL AT AN APPROVED OFFSITE LOCATION.

DESIGNED	BL / TC	DATE	REFERENCE DRAWING				REVISIONS				REVISIONS			
			NUMBER	DESCRIPTION	DATE	BY	DESCRIPTION	REV	DATE	BY	DESCRIPTION	REV	DATE	BY
DRAWN	BL	DATE			2022-12-19	BL	ISSUED FOR DEVELOPMENT PERMIT							
CHECKED	BL / TC	DATE												
APPROVAL	TC	DATE												

NOT FOR CONSTRUCTION

ARCHITECTURE 49

101 WEST GEORGIA, SUITE 270  
VANCOUVER, BRITISH COLUMBIA, V6E 3G9  
Phone: 604-736-5229 | WWW.ARCHITECTURE49.COM

wsp

1000-800 HOWE STREET  
VANCOUVER, BRITISH COLUMBIA  
CANADA V6Z 2M1  
PHONE: 604-685-9381  
WWW.WSP.COM

TRANS LINK

SOUTH COAST BRITISH COLUMBIA  
TRANSPORTATION AUTHORITY (SCBCTA)  
400 - 287 Nelson's Court,  
New Westminster, B.C. V3L 0E7

CONTRACT NO. 182009-01

MARPOLE TRANSIT CENTRE

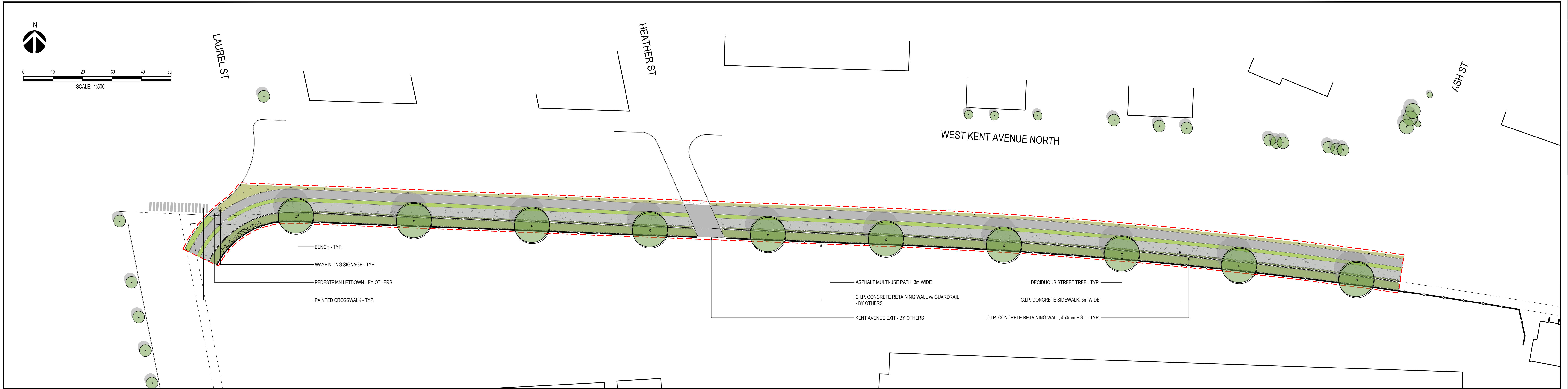
TREE PROTECTION PLAN

SCALE  
1:750

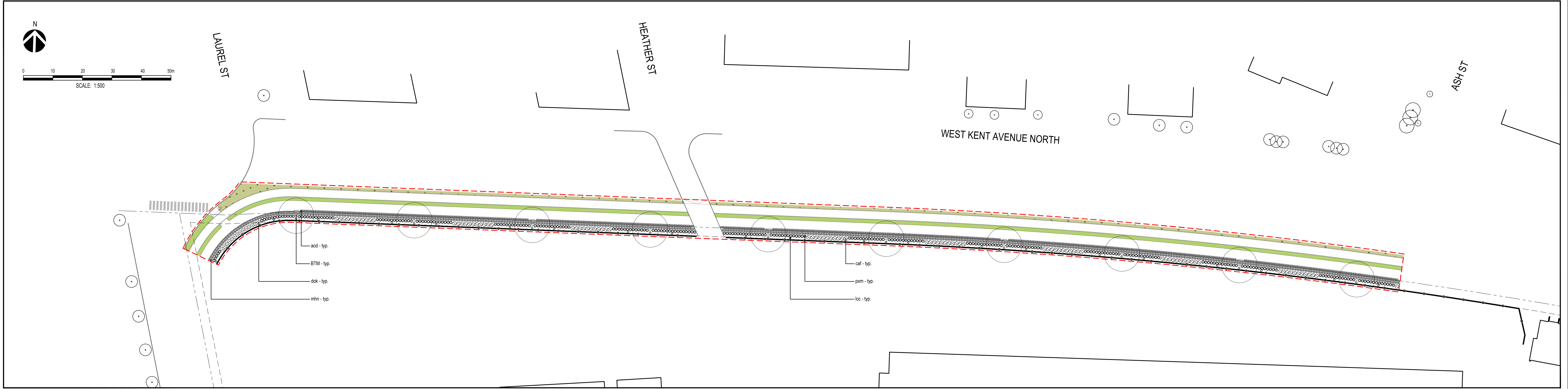
DRAWING No.  
L001

REV. No.  
1

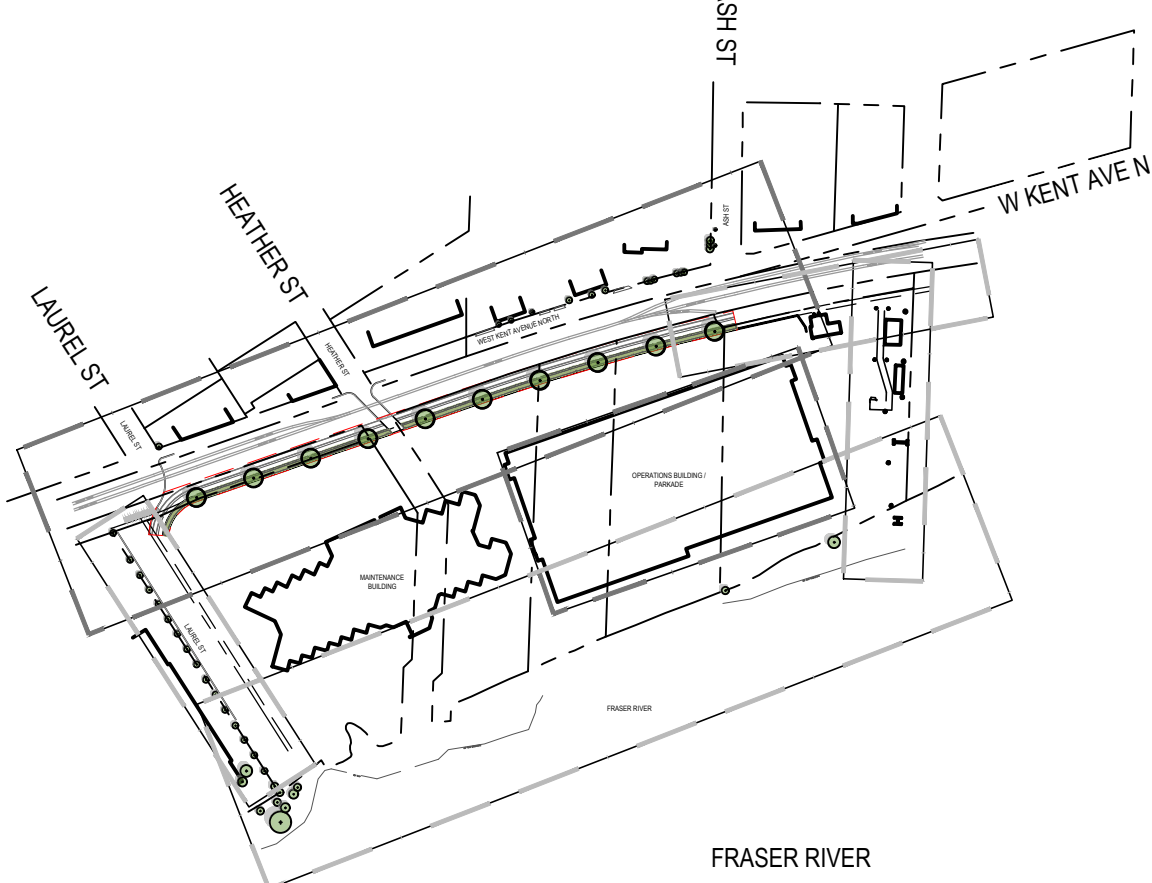




1 WEST KENT AVE MUP LANDSCAPE PLAN  
L101 SCALE: 1:500

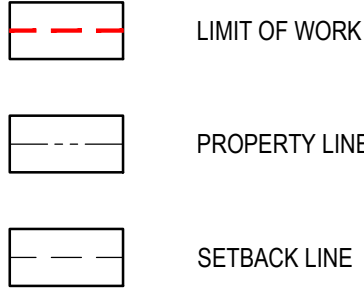


2 WEST KENT AVE MUP PLANTING PLAN  
L101 SCALE: 1:500

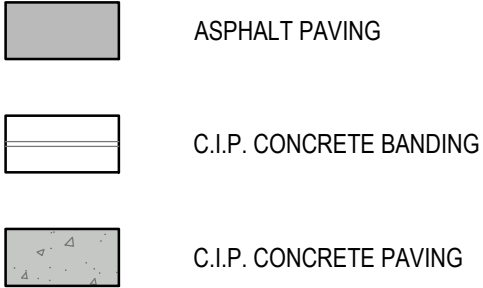


3 KEY PLAN  
L101 SCALE: 1:5000

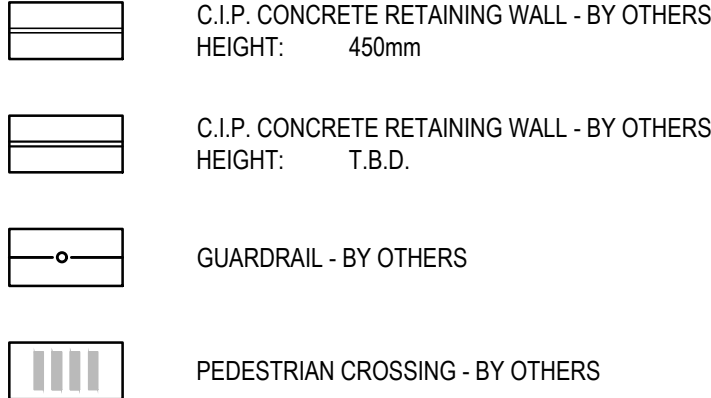
GENERAL LEGEND



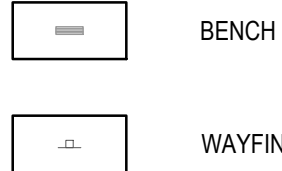
HARDSCAPE LEGEND



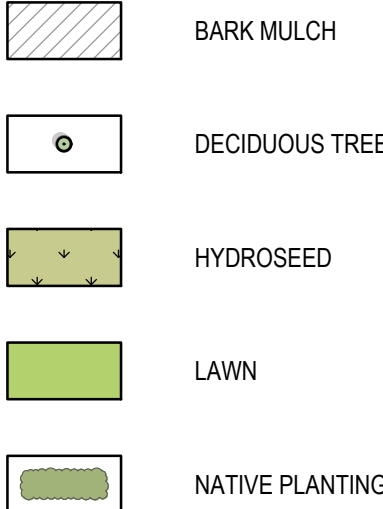
SITE FEATURES LEGEND



SITE FURNITURE LEGEND



SOFTSCAPE LEGEND



NOTES:

1. PLANT MATERIALS AND CONSTRUCTION METHODS SHALL CONFORM TO MINIMUM STANDARDS ESTABLISHED IN THE CANADIAN LANDSCAPE STANDARD (CURRENT EDITION).
2. THE LANDSCAPE DESIGN DESIGNATED HEREIN IS CONCEPTUAL BUT REFLECTS THE MINIMUM ACCEPTABLE QUALITY AND SIZE.
3. PLANT MATERIAL SELECTIONS ARE CONCEPTUAL ONLY. FINAL PLANTING SELECTIONS MAY VARY DEPENDING UPON AVAILABILITY.
4. ALL PLANTING BEDS SHALL HAVE APPROVED MULCH.
5. ALL LANDSCAPE AREAS TO BE IRRIGATED WITH A TEMPORARY EFFICIENT AUTOMATIC IRRIGATION SYSTEM FOR TWO YEARS, UNTIL PLANT MATERIAL IS ESTABLISHED.
6. THIS DRAWING DEPICTS FORM AND CHARACTER AND IS TO BE USED FOR DEVELOPMENT PERMIT SUBMISSION ONLY. IT IS NOT INTENDED FOR USE AS A CONSTRUCTION DOCUMENT.

REPRESENTATIVE PLANT LIST

SYMBOL	QUANTITY	BOTANICAL NAME	COMMON NAME	SIZE	ROOT	MATURE PLANT SIZE (H X W)	SPACING	NOTES
TREES								
BTN	10	<i>Betula nigra</i> 'Cully'	HERITAGE RIVER BIRCH	60mm Cal.	B&B	16.00m x 12.00m	4000mm O.C.	1800mm CLEAR STEM HEIGHT
GRASSES / PERENNIALS / SHRUBS								
acd	584	<i>Asarum canadense</i>	CANADA WILD GINGER	#01	POTTED	0.30m x 0.60m	300mm O.C.	FULL HEALTHY PLANT
cal	89	<i>Cornus stolonifera</i> 'Arctic Fire'	ARCTIC FIRE DOGWOOD	#02	POTTED	1.20m x 1.20m	1200mm O.C.	FULL HEALTHY PLANT
dok	14	<i>Diervilla lonicera</i> 'Orange'	ORANGE BUSH HONEYSUCKLE	#02	POTTED	1.20m x 1.20m	1200mm O.C.	FULL HEALTHY PLANT
loc	31	<i>Lonicera caerulea</i>	ORANGE HONEYSUCKLE	#03	POTTED	4.00m x 9.00m	7500mm O.C.	FULL HEALTHY PLANT
mtn	445	<i>Mahonia nervosa</i>	CASCADE OREGON GRAPE	#02	POTTED	0.60m x 0.90m	900mm O.C.	FULL HEALTHY PLANT
pam	271	<i>Paxistima myrsinites</i>	FALSEBOX	#02	POTTED	0.90m x 0.90m	900mm O.C.	FULL HEALTHY PLANT

DESIGNED	BL / TC	DATE	REFERENCE DRAWING	REVISIONS	REVISIONS
DRAWN	BL	DATE	NUMBER	DESCRIPTION	REV
CHECKED	BL / TC	DATE			
APPROVAL	TC	DATE			

NOT FOR CONSTRUCTION

ARCHITECTURE 49

1015 WEST GEORGIA, SUITE 210  
VANCOUVER, BRITISH COLUMBIA V6E 3C9  
Phone: 604-736-5221 | WWW.ARCHITECTURE49.COM

wsp

1000-800 HOWE STREET  
VANCOUVER, BRITISH COLUMBIA  
CANADA V6Z 2M1  
PHONE: 604-685-9381  
WWW.WSP.COM

TRANS LINK

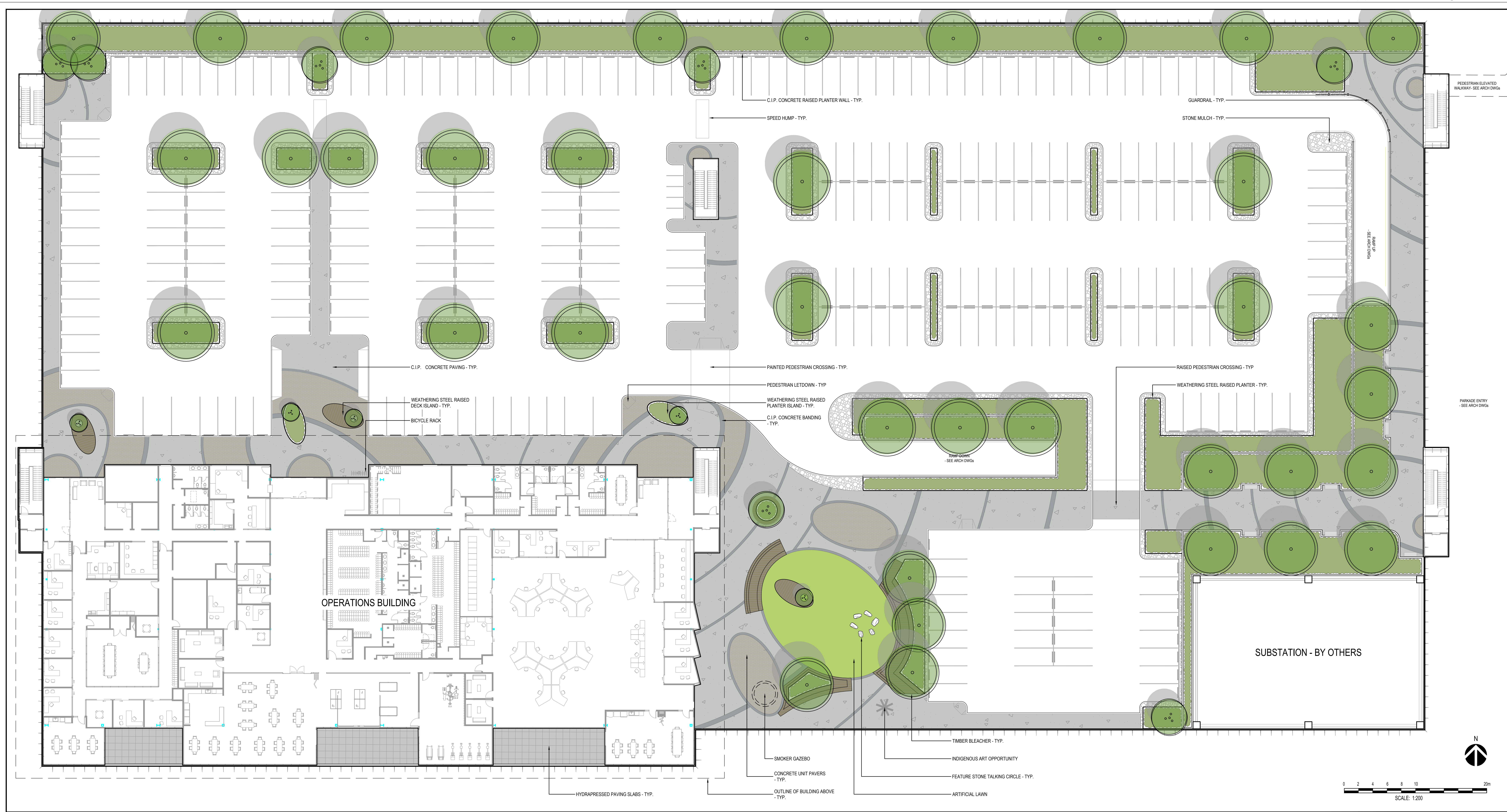
SOUTH COAST BRITISH COLUMBIA  
TRANSPORTATION AUTHORITY (SCBCTA)  
400 - 287 Nelson's Court,  
New Westminster, B.C. V3L 0E7

CONTRACT NO. 182009-01

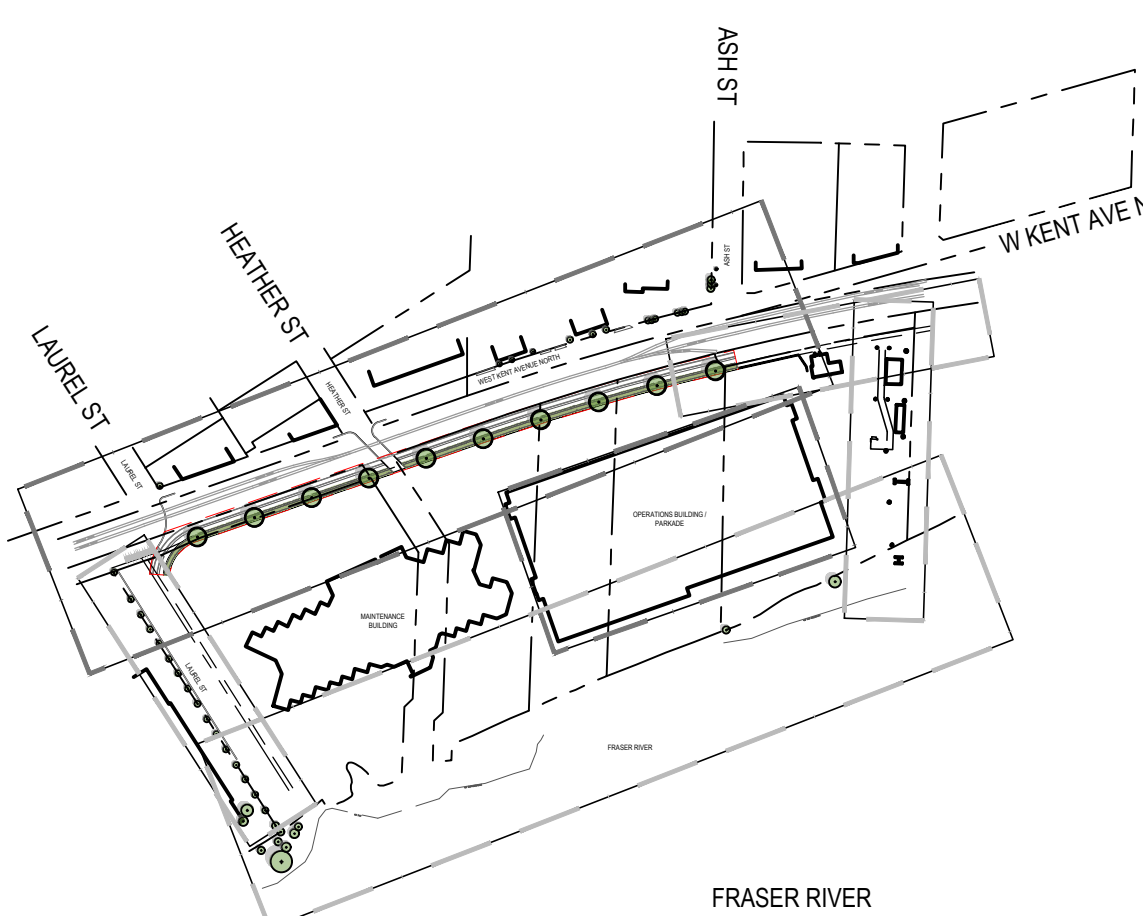
MARPOLE TRANSIT CENTRE  
AREA 3  
WEST KENT AVENUE MUP

SCALE: 1:500 DRAWING No. L101 REV. No. 1





1 OPERATIONS BUILDING 3rd FLOOR LANDSCAPE PLAN  
L105 SCALE: 1:200



3 KEY PLAN  
L105 SCALE: 1:5000

GENERAL LEGEND

- LIMIT OF WORK
- PROPERTY LINE
- OUTLINE OF BUILDING ABOVE

HARDSCAPE LEGEND

- ARTIFICIAL LAWN
- C.I.P. CONCRETE PAVING
- C.I.P. CONCRETE BANDING
- CONCRETE UNIT PAVERS
- HYDRAPRESSED SLABS
- RIVER ROCK COBBLESTONE
- TIMBER DECK

SITE FEATURES LEGEND

- GUARDRAIL
- INDIGENOUS PUBLIC ART OPPORTUNITY
- WEATHERING STEEL RAISED DECK ISLAND
- WEATHERING STEEL RAISED PLANTER ISLAND
- WEATHERING STEEL RAISED PLANTER
- WEATHERING STEEL RAISED PLANTER

SITE FURNITURE LEGEND

- BICYCLE RACK
- BENCH

NOTES:

1. PLANT MATERIALS AND CONSTRUCTION METHODS SHALL CONFORM TO MINIMUM STANDARDS ESTABLISHED IN THE CANADIAN LANDSCAPE STANDARD (CURRENT EDITION).
2. THE LANDSCAPE DESIGN DESIGNATED HEREIN IS CONCEPTUAL BUT REFLECTS THE MINIMUM ACCEPTABLE QUALITY AND SIZE.
3. PLANT MATERIAL SELECTIONS ARE CONCEPTUAL ONLY. FINAL PLANTING SELECTIONS MAY VARY DEPENDING UPON AVAILABILITY.
4. ALL PLANTING BEDS SHALL HAVE APPROVED MULCH.
5. ALL LANDSCAPE AREAS TO BE IRRIGATED WITH A TEMPORARY EFFICIENT AUTOMATIC IRRIGATION SYSTEM FOR TWO YEARS, UNTIL PLANT MATERIAL IS ESTABLISHED.
6. THIS DRAWING DEPICTS FORM AND CHARACTER AND IS TO BE USED FOR DEVELOPMENT PERMIT SUBMISSION ONLY. IT IS NOT INTENDED FOR USE AS A CONSTRUCTION DOCUMENT.

DESIGNED	BL / TC	DATE	REFERENCE DRAWING		REVISIONS				REVISIONS			
DRAWN	BL	DATE	NUMBER	DESCRIPTION	DATE	BY	DESCRIPTION	REV	DATE	BY	DESCRIPTION	REV
CHECKED	BL / TC	DATE										
APPROVAL	TC	DATE										

NOT FOR CONSTRUCTION

ARCHITECTURE 49

1915 WEST GEORGIA, SUITE 210  
VANCOUVER (BRITISH COLUMBIA) CANADA V6Z 2M1  
PHONE: 604-785-5223 | WWW.ARCHITECTURE49.COM

wsp

1000-800 HOWE STREET  
VANCOUVER (BRITISH COLUMBIA)  
CANADA V6Z 2M1  
PHONE: 604-685-9381  
WWW.WSP.COM

TRANS LINK

SOUTH COAST BRITISH COLUMBIA  
TRANSPORTATION AUTHORITY (SCBCTA)  
400 - 287 Nelson's Court,  
New Westminster, B.C. V3L 0E7

CONTRACT NO. 182009-01

MARPOLE TRANSIT CENTRE  
AREA 6  
OPS BUILDING 3rd FLOOR LANDSCAPE PLAN

SCALE  
1:200

DRAWING No.  
L105

REV. No.  
1





SCALE: 1:200




SCALE: 1:200







## KEY PLAY

## KEY PLAY

114

- |   |                           |
|---|---------------------------|
|  | LIMIT OF WORK             |
|  | PROPERTY LINE             |
|  | OUTLINE OF BUILDING ABOVE |



- |   |                           |
|---|---------------------------|
|  | BARK MULCH                |
|  | DECIDUOUS ORNAMENTAL TREE |
|  | DECIDUOUS SHADE TREE      |
|  | NATIVE PLANTING           |

1. PLANT MATERIALS AND CONSTRUCTION METHODS SHALL CONFORM TO MINIMUM STANDARDS ESTABLISHED IN THE CANADIAN LANDSCAPE STANDARD (CURRENT EDITION).
2. THE LANDSCAPE DESIGN DESIGNATED HEREIN IS CONCEPTUAL BUT REFLECTS THE MINIMUM ACCEPTABLE QUALITY AND SIZE.
3. PLANT MATERIAL SELECTIONS ARE CONCEPTUAL ONLY. FINAL PLANTING SELECTIONS MAY VARY DEPENDING UPON AVAILABILITY.
4. ALL PLANTING BEDS SHALL HAVE APPROVED MULCH.
5. ALL LANDSCAPE AREAS TO BE IRRIGATED WITH A TEMPORARY EFFICIENT AUTOMATIC IRRIGATION SYSTEM FOR TWO YEARS, UNTIL PLANT MATERIAL IS ESTABLISHED.
6. THIS DRAWING DEPICTS FORM AND CHARACTER AND IS TO BE USED FOR DEVELOPMENT PERMIT SUBMISSION ONLY. IT IS NOT INTENDED FOR USE AS CONSTRUCTION DOCUMENT.

SYMBOL	QUANTITY	BOTANICAL NAME	COMMON NAME	SIZE	ROOT	MATURE PLANT SIZE (H X W)	SPACING	NOTES
TREES								
COO	8	<i>Cercis occidentalis</i>	WESTERN REDBUD	50mm Cal.	B&B	4.00m x 4.00m		SINGLE, STRONG LEADER
PNA	37	<i>Prunus americana</i>	AMERICAN PLUM	60mm Cal.	B&B	7.00m x 7.00m		SINGLE, STRONG LEADER
GRASSES / PERENNIALS / SHRUBS								
all	146	<i>Allium 'Ambassador'</i>	ORNAMENTAL ONION	BULB	N/A	1.20m x 0.30m	RANDOMLY SCATTERED	
cod	3188	<i>Cornus canadensis</i>	BUNCHBERRY	#01	POTTED	0.10m x 0.30m	300mm O.C.	FULL, HEALTHY PLANT
csk	98	<i>Cornus sericea 'Kelsay'</i>	KELSEY DOGWOOD	#02	POTTED	0.90m x 0.90m	900mm O.C.	FULL, HEALTHY PLANT
dli	44	<i>Diervilla lonicera</i>	NORTHERN BUSH HONEYSUCKLE	#02	POTTED	0.90m x 1.20m	1200mm O.C.	FULL, HEALTHY PLANT
ecs	70	<i>Echinacea 'Cheyenne Spirit'</i>	CHEYENNE SPIRIT CONEFLOWER	#02	POTTED	0.75m x 0.60m	600mm O.C.	FULL, HEALTHY PLANT
gla	14	<i>Gallardia aristata</i>	GREAT BLANKET FLOWER	#02	POTTED	0.90m x 0.60m	600mm O.C.	FULL, HEALTHY PLANT
iss	144	<i>Iris sibirica 'Snow Queen'</i>	SIBERIAN IRIS SNOW QUEEN	#01	POTTED	0.90m x 0.60m	600mm O.C.	FULL, HEALTHY PLANT
loc	6	<i>Lonicera ciliosa</i>	ORANGE HONEYCREEPER	#03	POTTED	4.00m x 0.90m	7500mm O.C.	FULL, HEALTHY PLANT
mhn	97	<i>Malva nerosa</i>	CASCADE OREGON GRAPE	#02	POTTED	0.60m x 0.90m	900mm O.C.	FULL, HEALTHY PLANT
pkm	203	<i>Paxistima myrsinites</i>	FALSEBOX	#02	POTTED	0.90m x 0.90m	900mm O.C.	FULL, HEALTHY PLANT
rda	391	<i>Rhododendrum 'Rampapo'</i>	RAMAPO RHODODENDRUM	#02	POTTED	0.60m x 0.90m	900mm O.C.	FULL, HEALTHY PLANT
sph	682	<i>Sporobolus heterolepis</i>	RAIRIE DROPSPEED	#02	POTTED	0.90m x 0.90m	900mm O.C.	FULL, HEALTHY PLANT
vca	812	<i>Vaccinium angustifolium</i>	LOWBUSH BLUEBERRY	#02	POTTED	0.60m x 0.60m	600mm O.C.	FULL, HEALTHY PLANT

[illegible]

1175 WEST GEORGIA, SUITE 270  
VANCOUVER (BRITISH COLUMBIA) CANADA V6E 5C1  
Phone 604-736-6329 | [WWW.ARCHITECTURE49.COM](http://WWW.ARCHITECTURE49.COM)

1000-800 HOWE STREET  
VANCOUVER (BRITISH COLUMBIA)  
CANADA V6Z 2M1  
PHONE: 604-685-9381  
WWW.WSP.COM

SOUTH COAST BRITISH COLUMBIA  
TRANSPORTATION AUTHORITY (SCBCTA)  
400 - 287 Nelson's Court,  
New Westminster, B.C. V3L 0E7

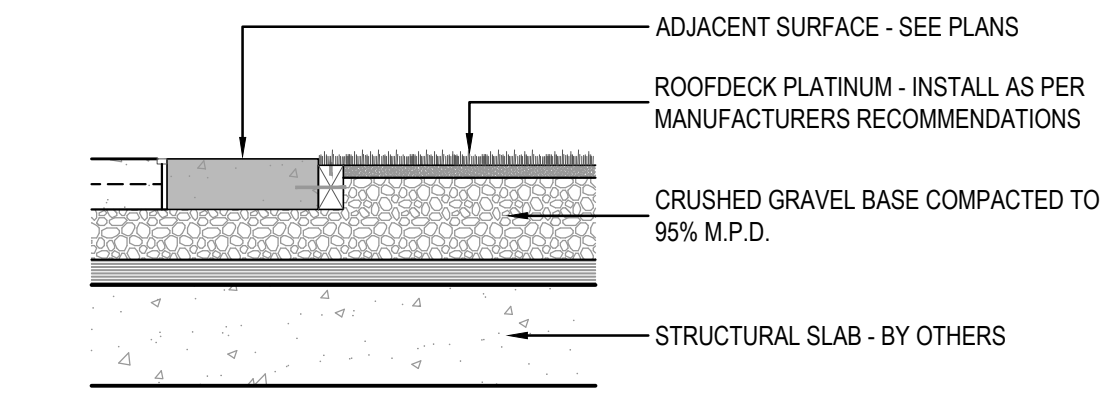
MARPOLE TRANSIT CENTRE  
AREA 6  
OPS BUILDING 3rd FLOOR PLANTING PLAN

SCALE  
1:200

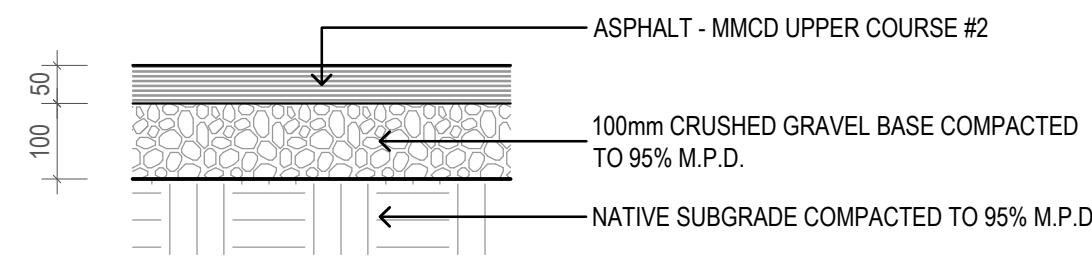
DRAWING No  
L106

REV. No	1
---------	---

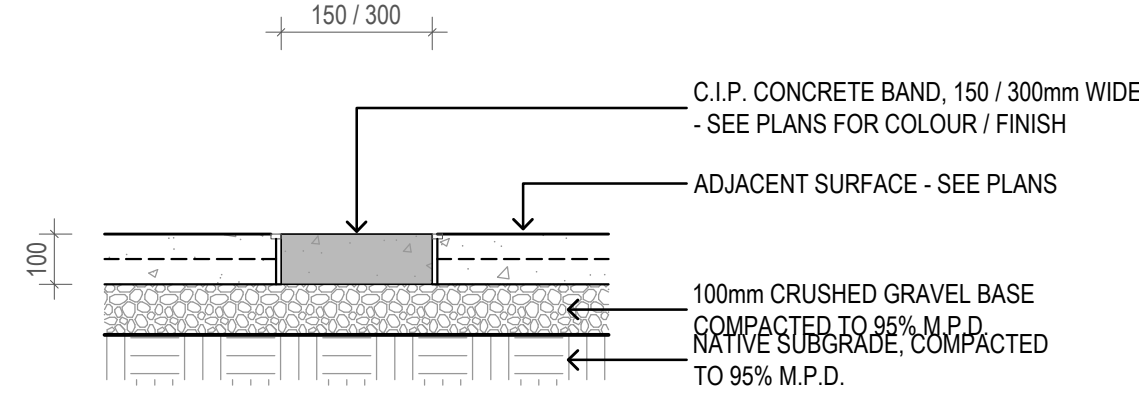




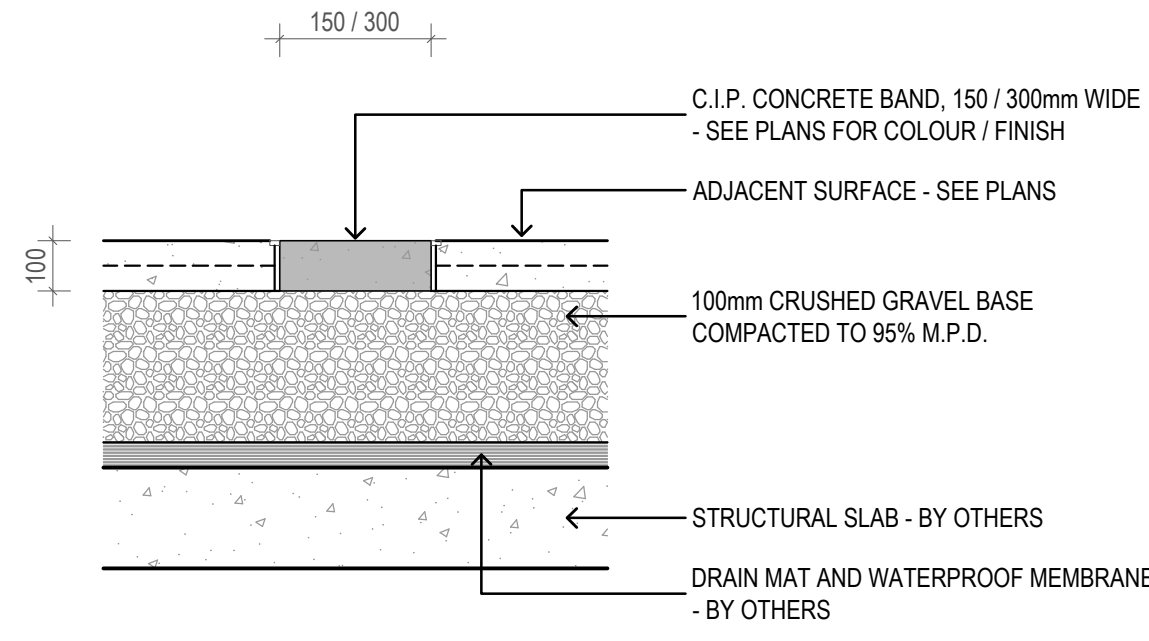
1 ARTIFICIAL LAWN  
L400 SCALE: 1:15



2 ASPHALT PAVING  
L400 SCALE: 1:10



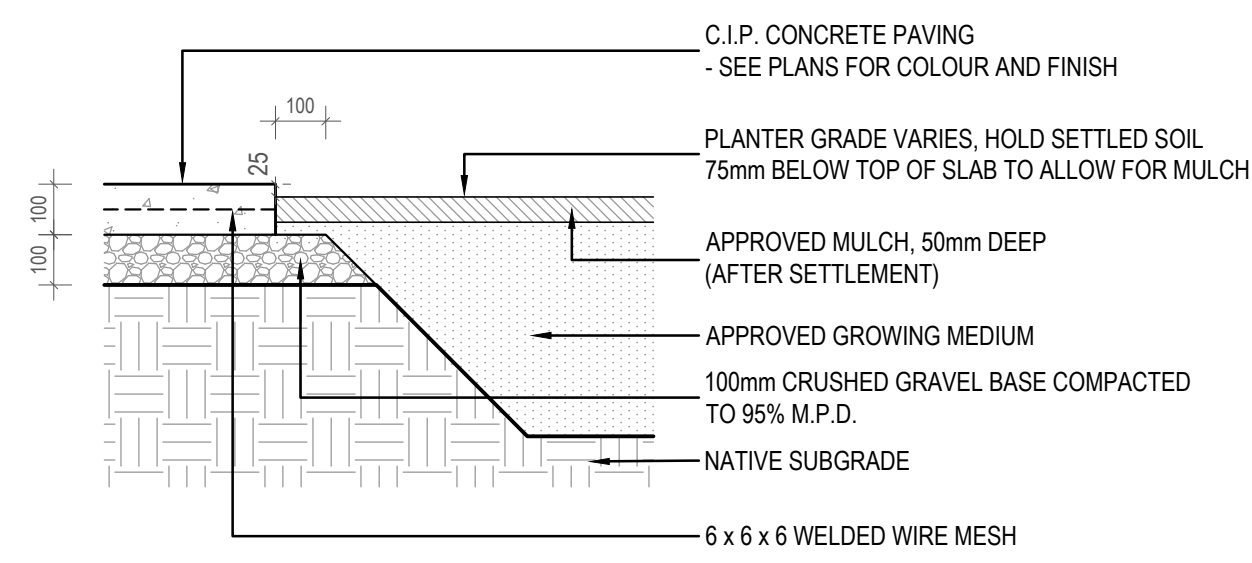
3 C.I.P. CONCRETE BANDING - ON GRADE  
L400 SCALE: 1:15



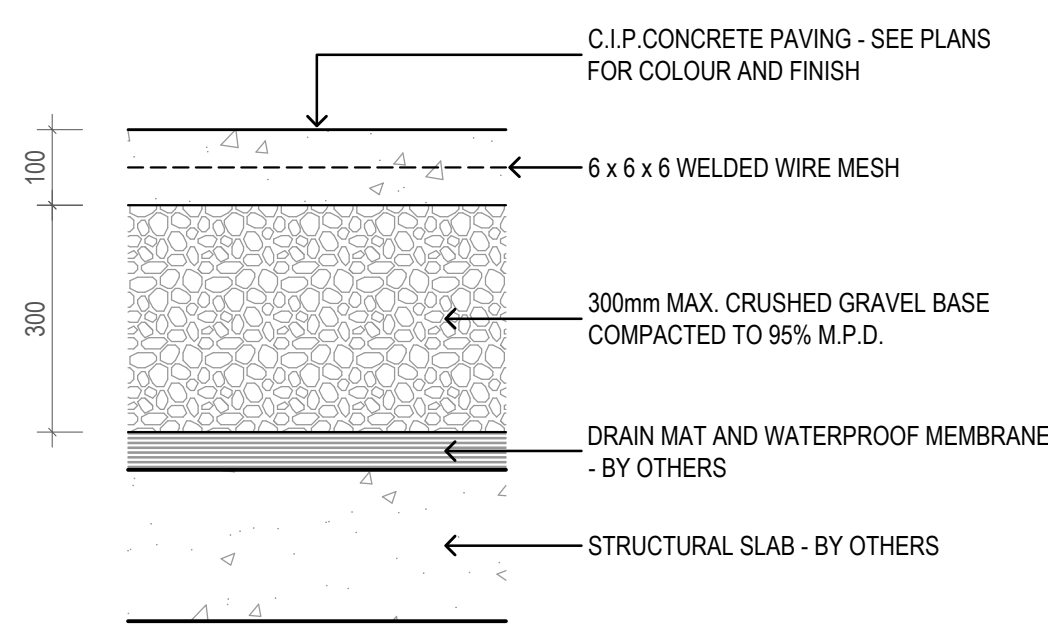
4 C.I.P. CONCRETE BANDING - ON SLAB  
L400 SCALE: 1:15

NOTES:

1. ENSURE POSITIVE SURFACE DRAINAGE AWAY FROM BUILDING.



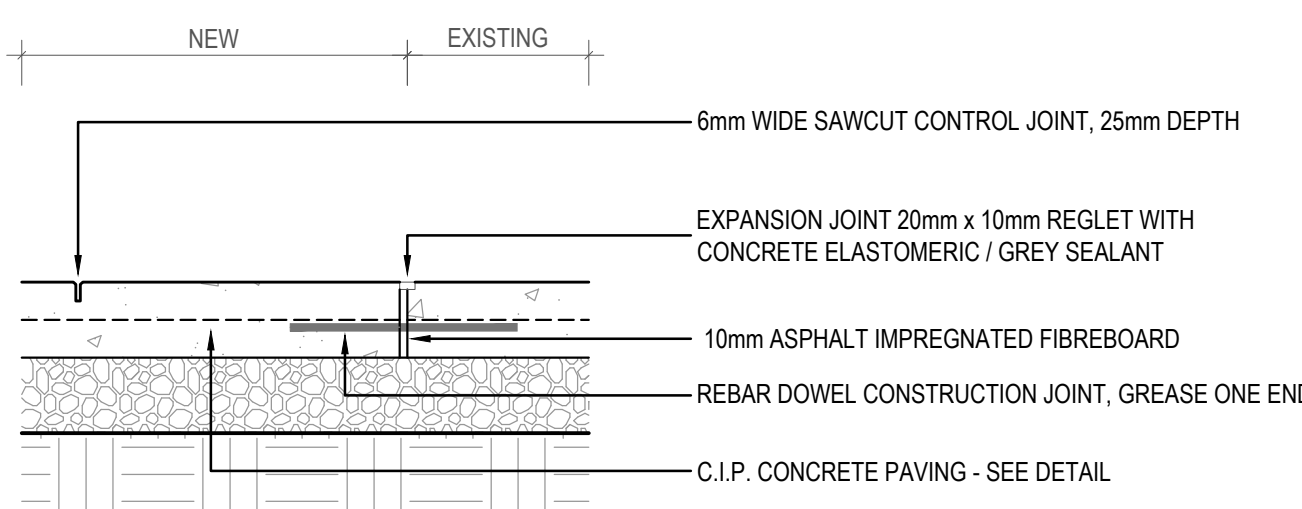
5 C.I.P. CONCRETE PAVING - ON GRADE  
L400 SCALE: 1:15



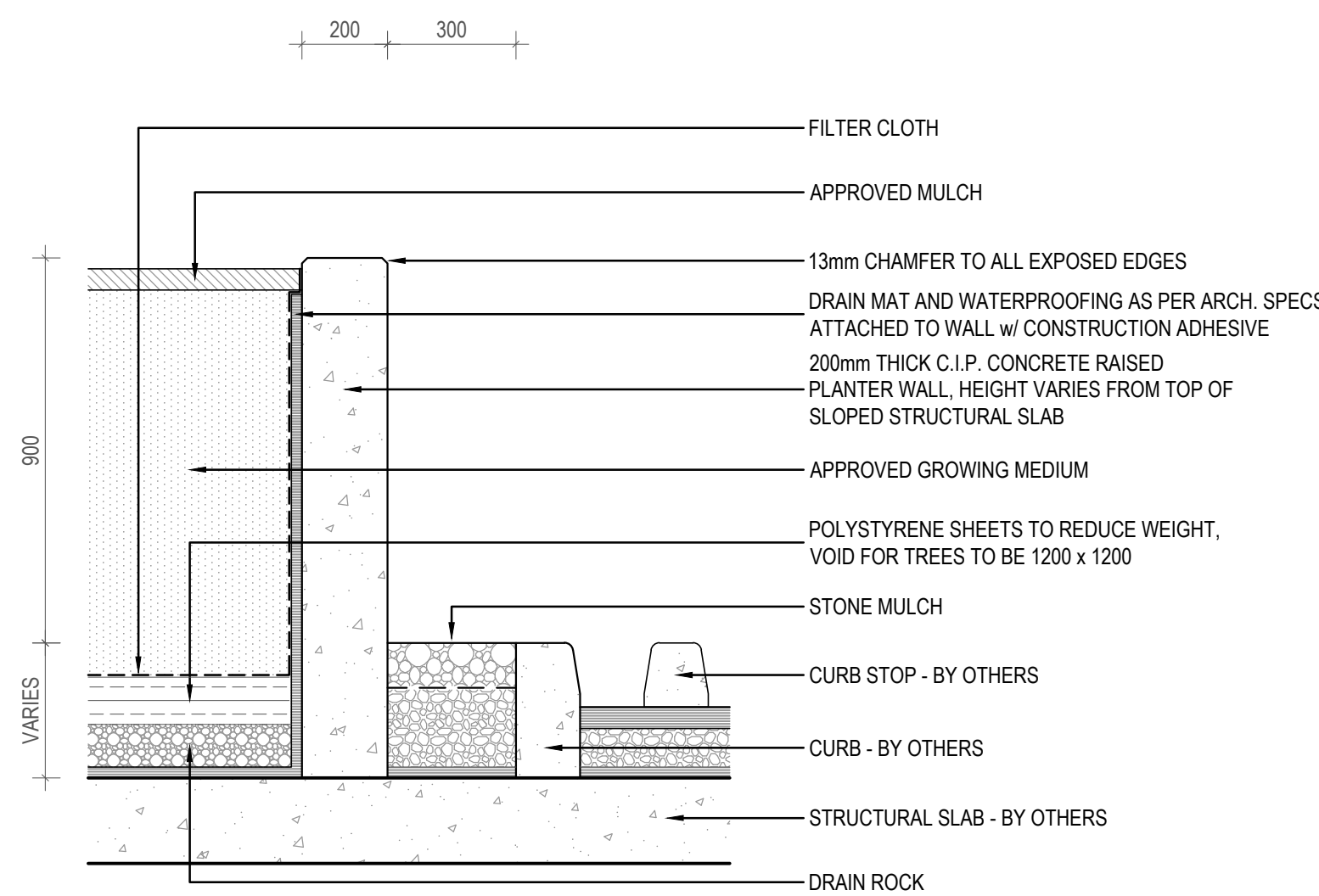
6 C.I.P. CONCRETE PAVING - ON SLAB  
L400 SCALE: 1:10

NOTES:

1. SAWCUT AND CONTROL JOINTS TO BE PROVIDED IN PATTERN SHOWN ON GRADING SHEETS.  
2. CONTRACTOR TO LAY OUT ALL SAWCUT JOINTS FOR APPROVAL PRIOR TO CUTTING.  
3. PROVIDE EXPANSION JOINTS AT ALL VERTICAL FACES.



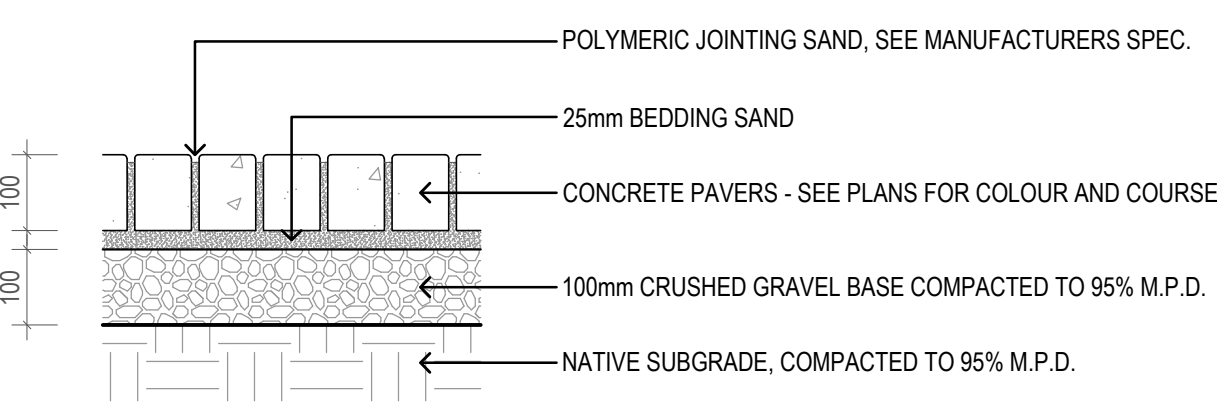
7 C.I.P. CONCRETE PAVING JOINTS  
L400 SCALE: 1:10



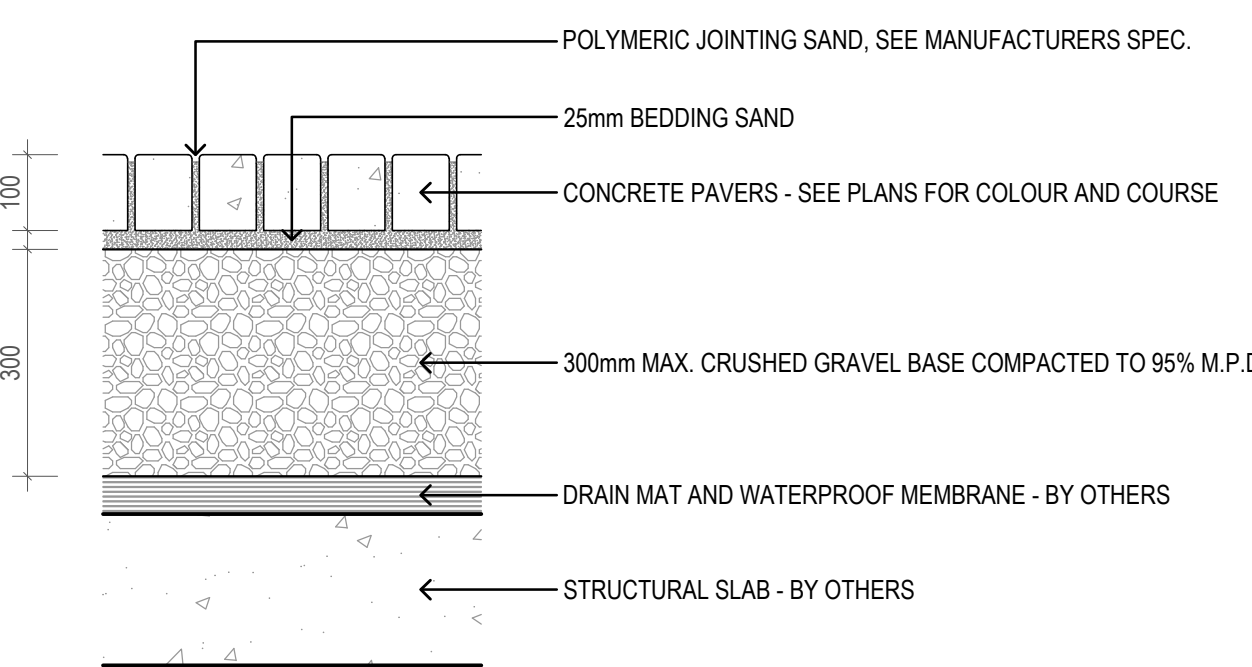
8 C.I.P. CONCRETE RAISED PLANTER WALL  
L400 SCALE: 1:15

NOTES:

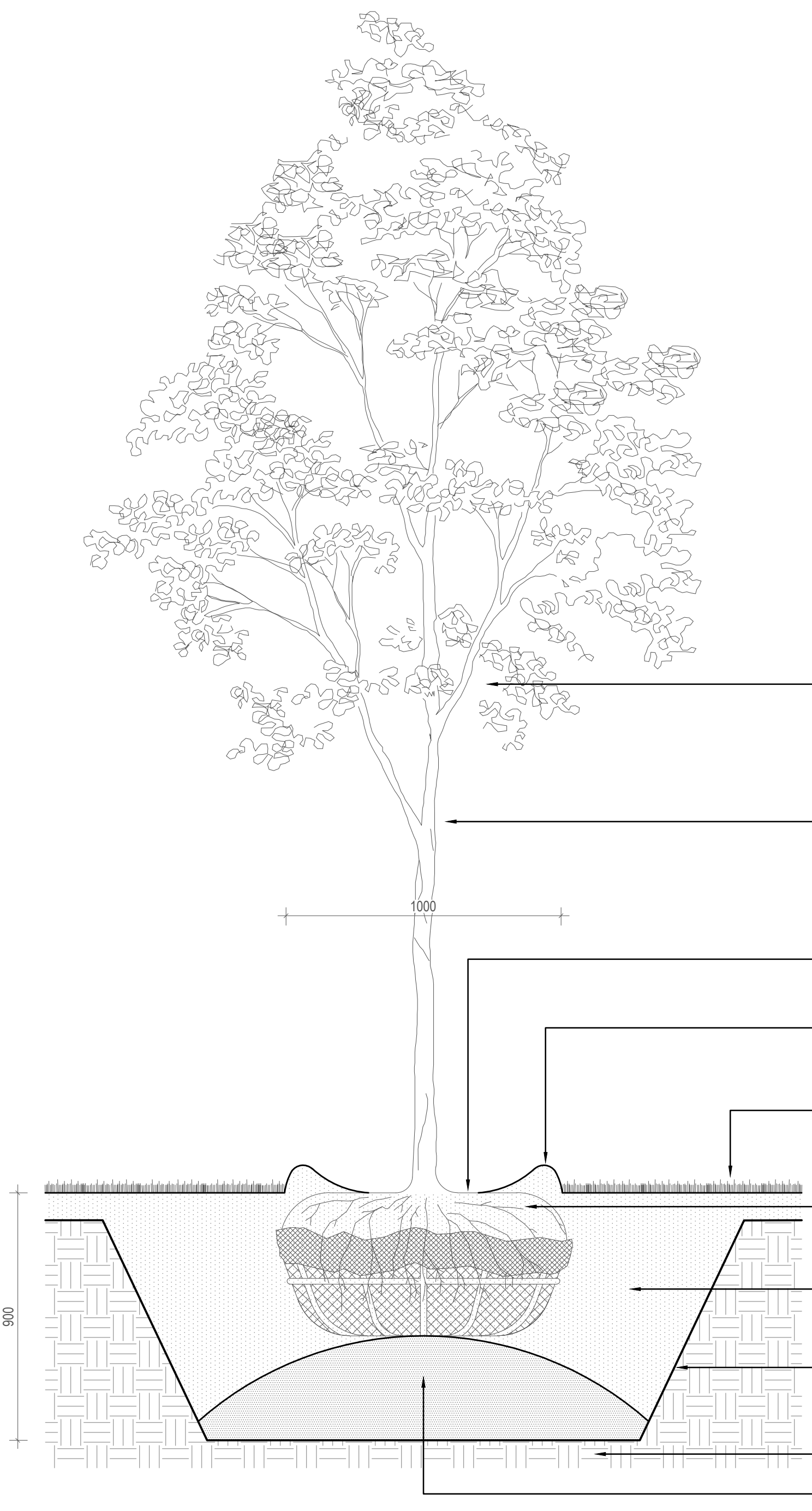
1. INSTALL PAVERS FLUSH WITH ADJACENT SURFACE.  
2. ENSURE POSITIVE SURFACE DRAINAGE TOWARDS DRAINAGE INFRASTRUCTURE.



9 CONCRETE UNIT PAVERS - ON GRADE  
L400 SCALE: 1:10



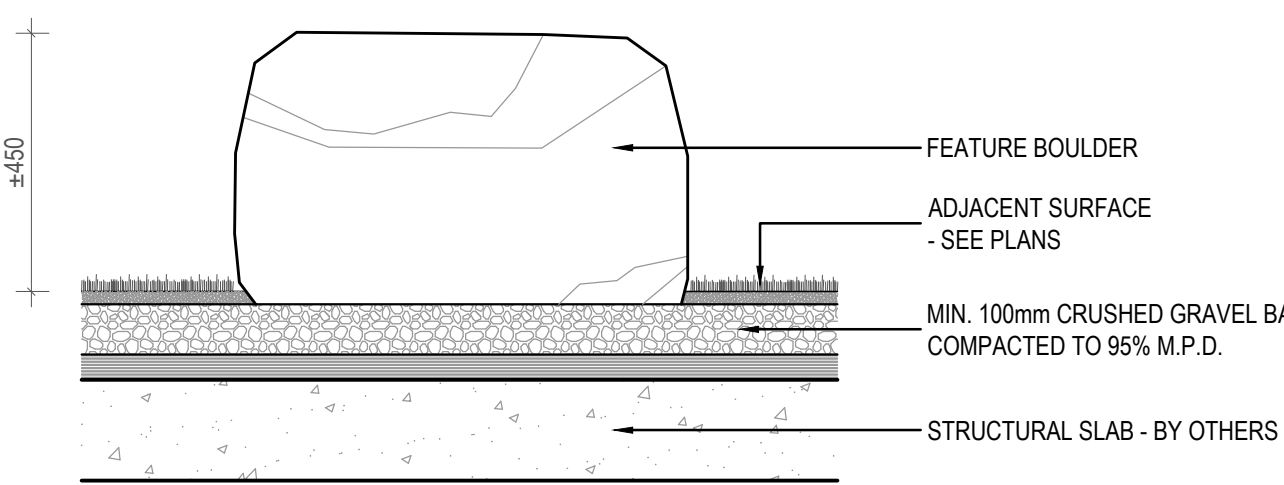
10 CONCRETE UNIT PAVERS - ON SLAB  
L400 SCALE: 1:10



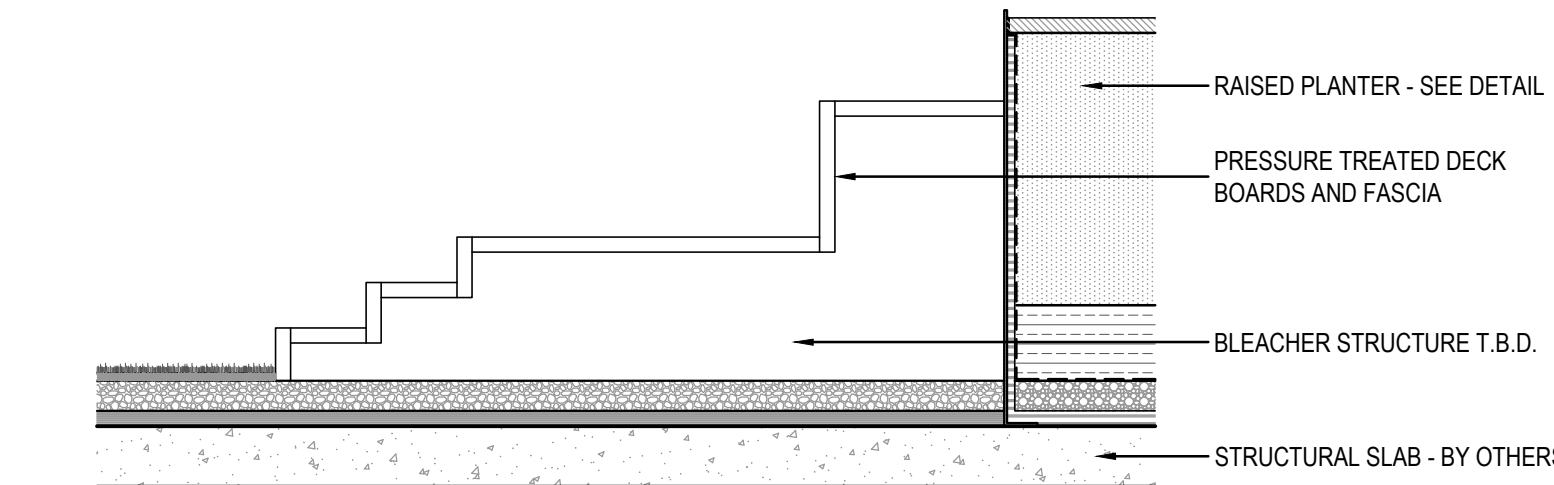
15 TYPICAL TREE PLANTING  
L400 SCALE: 1:15

NOTES:

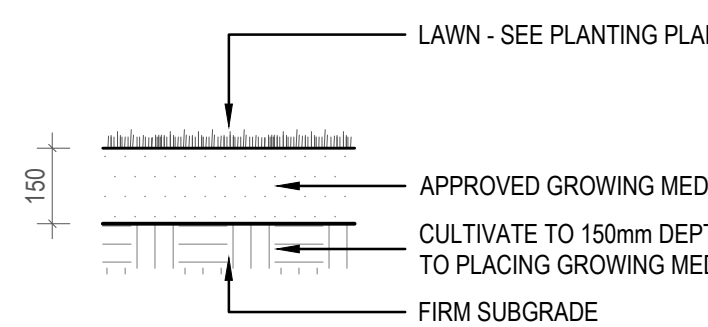
1. HAND DIG ALL TREE PITS WHEN CLOSER THAN 1.5m TO UNDERGROUND UTILITIES.  
2. TREES ARE NOT TO BE STAKED / OR WRAPPED. IF AFTER INITIAL INSTALLATION TREES REQUIRE STAKING, THEN (02) 50mm DIA. PRESSURE TREATED STAKES w/ ARBORITE (ARE TO BE INSTALLED, ORIENTATED TO BE PERPENDICULAR WITH THE PREVAILING WIND. ENSURE STAKES PENETRATE INTO FIRM SUBGRADE.  
3. WHERE TREES ARE WITHIN 3m OF A HARD SURFACE INSTALL 3m OF ROOTBARRIER ALONG PLANTING AREA EDGE.  
4. ALL TREES SHALL COMPLY WITH THE MINIMUM STANDARDS ESTABLISHED IN THE CANADIAN LANDSCAPE STANDARDS (CURRENT EDITION).  
5. DO NOT DISTURB THE ROOTBALL OF THE TREE WITH THOSE OF OTHER PLANT MATERIAL PLANTED IN THE PLANTING AREA.



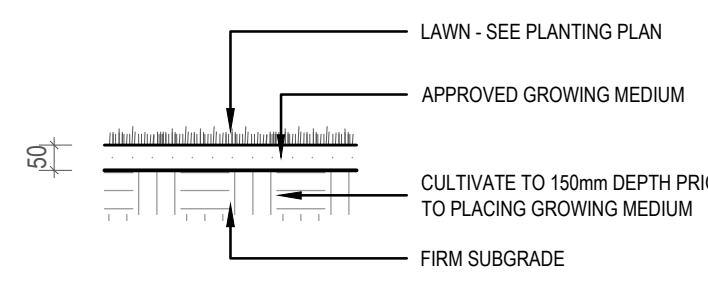
11 FEATURE BOULDER  
L400 SCALE: 1:15



16 TIMBER BLEACHER  
L400 SCALE: 1:25



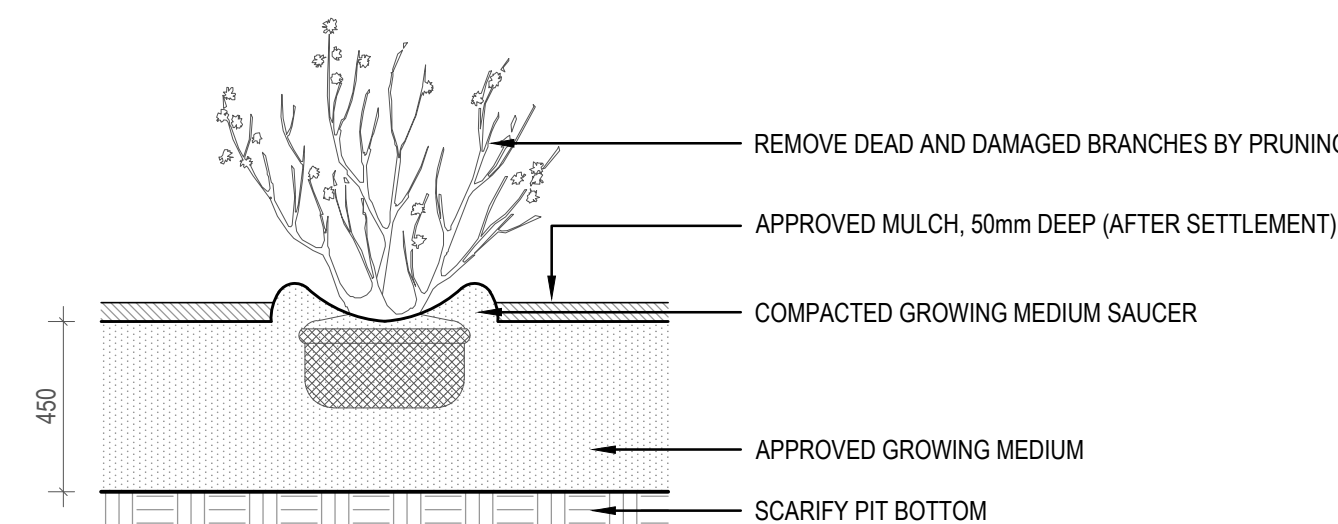
12 TYPICAL LAWN  
L400 SCALE: 1:15



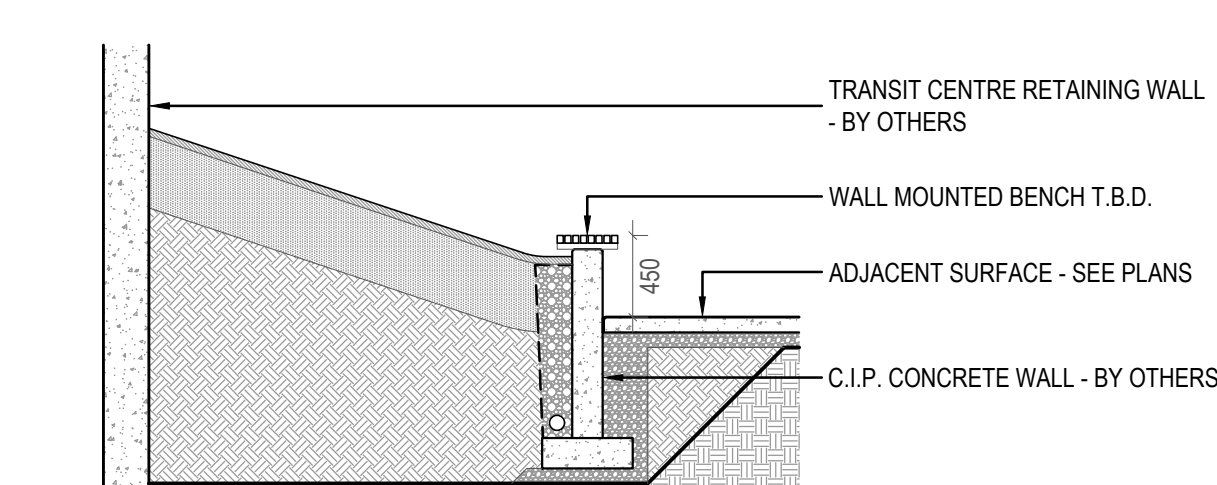
13 TYPICAL LAWN RESTORATION  
L400 SCALE: 1:15

NOTES:

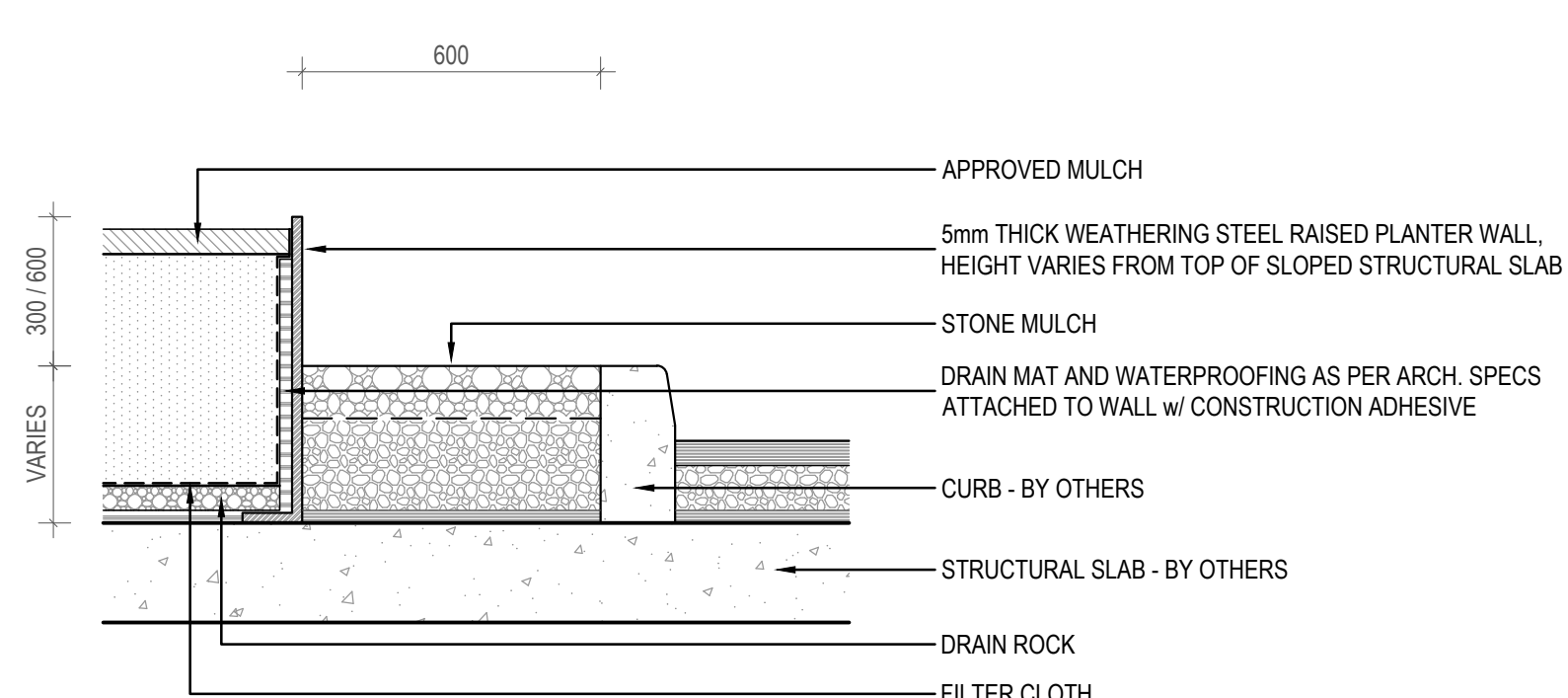
1. CONTAINER IS TO BE CUT CAREFULLY AWAY FROM ROOT SYSTEM SO AS NOT TO DISTURB THE PLANT.  
2. CONTRACTOR TO ALLOW FOR 20% SETTLEMENT WHEN PLACING THE SHRUB.



14 TYPICAL SHRUB PLANTING  
L400 SCALE: 1:20



17 WALL MOUNTED BENCH  
L400 SCALE: 1:50



18 WEATHERING STEEL RAISED PLANTER  
L400 SCALE: 1:15

DESIGNED	BL / TC	DATE	REFERENCE DRAWING		REVISIONS		REVISIONS			
			NUMBER	DESCRIPTION	DATE	BY	DESCRIPTION	REV	DATE	BY
DRAWN	BL	DATE			2022-12-19	BL	ISSUED FOR DEVELOPMENT PERMIT			
CHECKED	BL / TC	DATE								
APPROVAL	TC	DATE								

NOT FOR CONSTRUCTION

ARCHITECTURE 49

1015 WEST GEORGIA, SUITE 210  
VANCOUVER (BRITISH COLUMBIA) V6C 3S9  
Phone: 604-736-5201 WWW.ARCHITECTURE49.COM

wsp

1000-800 HOWE STREET  
VANCOUVER (BRITISH COLUMBIA)  
CANADA V6Z 2M1  
PHONE: 604-685-9381  
WWW.WSP.COM

TRANS LINK

SOUTH COAST BRITISH COLUMBIA  
TRANSPORTATION AUTHORITY (SCBCTA)  
400 - 287 Nelson's Court,  
New Westminster, B.C. V3L 0E7

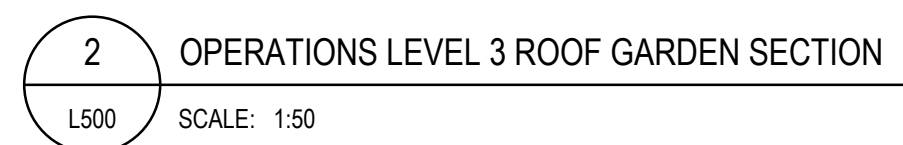
CONTRACT NO. 182009-01

MARPOLE TRANSIT CENTRE

LANDSCAPE DETAILS

SCALE	DRAWING NO. L400	REV. NO. 1
-------	---------------------	---------------





DESIGNED	BL / TC	DATE	NUMBER	DESCRIPTION	DATE	BY	DESCRIPTION	REV	DATE	BY	DESCRIPTION	REV
DRAWN	BL	DATE			2022-12-19	BL	ISSUED FOR DEVELOPMENT PERMIT	1				
CHECKED	BL / TC	DATE										
APPROVAL	TC	DATE										

NOT FOR CONSTRUCTION

**ARCHITECTURE** | 49

100 WEST GEORGIA, SUITE 270  
 VANCOUVER BRITISH COLUMBIA CANADA V6B 5T6  
 PHONE: (604) 738-5321 WWW.ARCHITECTURE49.COM

3000-800 HOWE STREET  
 VANCOUVER (BRITISH COLUMBIA)  
 CANADA V6Z 2M5  
 PHONE: (604) 681-9381  
 WWW.WSP.COM

SOUTH COAST BRITISH COLUMBIA  
 TRANSPORTATION AUTHORITY (SCBCTA)  
 400 - 287 Nelson's Court,  
 New Westminster, B.C. V3L 0E7

SCALE

DRAWING No.

**L500**

REV. No.

**1**