



# Community Conversations Event

OCTOBER 24, 2019



# Welcome!



The Vancouver Park Board is undertaking an independent study to understand the potential impacts of BC Hydro's request to bury underground power cables through Nelson Park as well as the indirect impacts to Nelson Park related to construction of the West End Substation which will be built on the adjacent Lord Roberts Annex site.



This study focuses specifically on Nelson Park.





# What is BC Hydro Requesting from the Park Board?

4



## **Nelson Park**

Focus of this study

## **Lord Roberts Annex Site**

West End Substation & future school location (outside the scope of this study)



# What is BC Hydro Requesting from the Park Board?

5

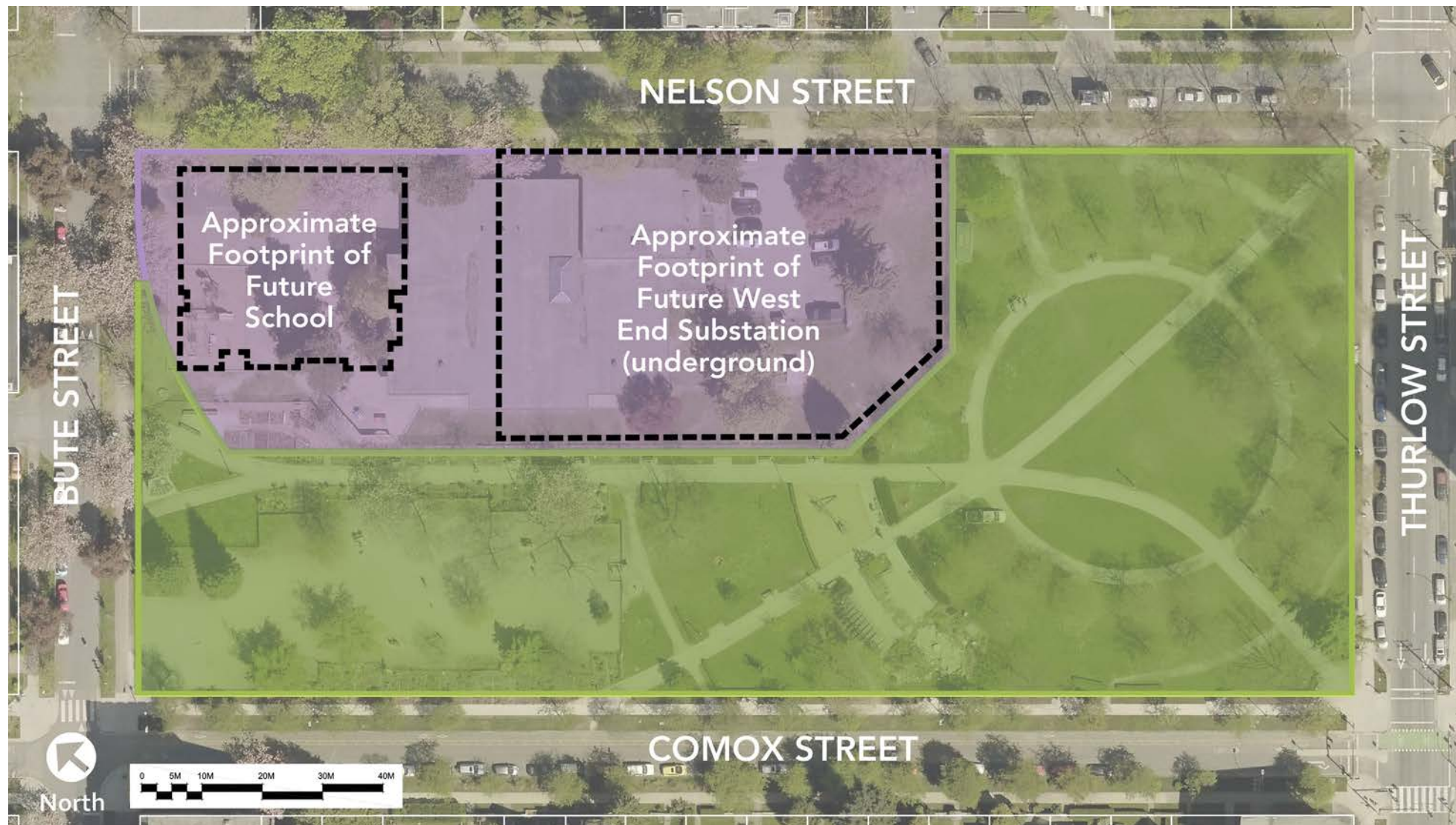


-  **Nelson Park**  
Focus of this study
-  **Lord Roberts Annex Site**  
West End Substation & future school location (outside the scope of this study)



# What is BC Hydro Requesting from the Park Board?

6

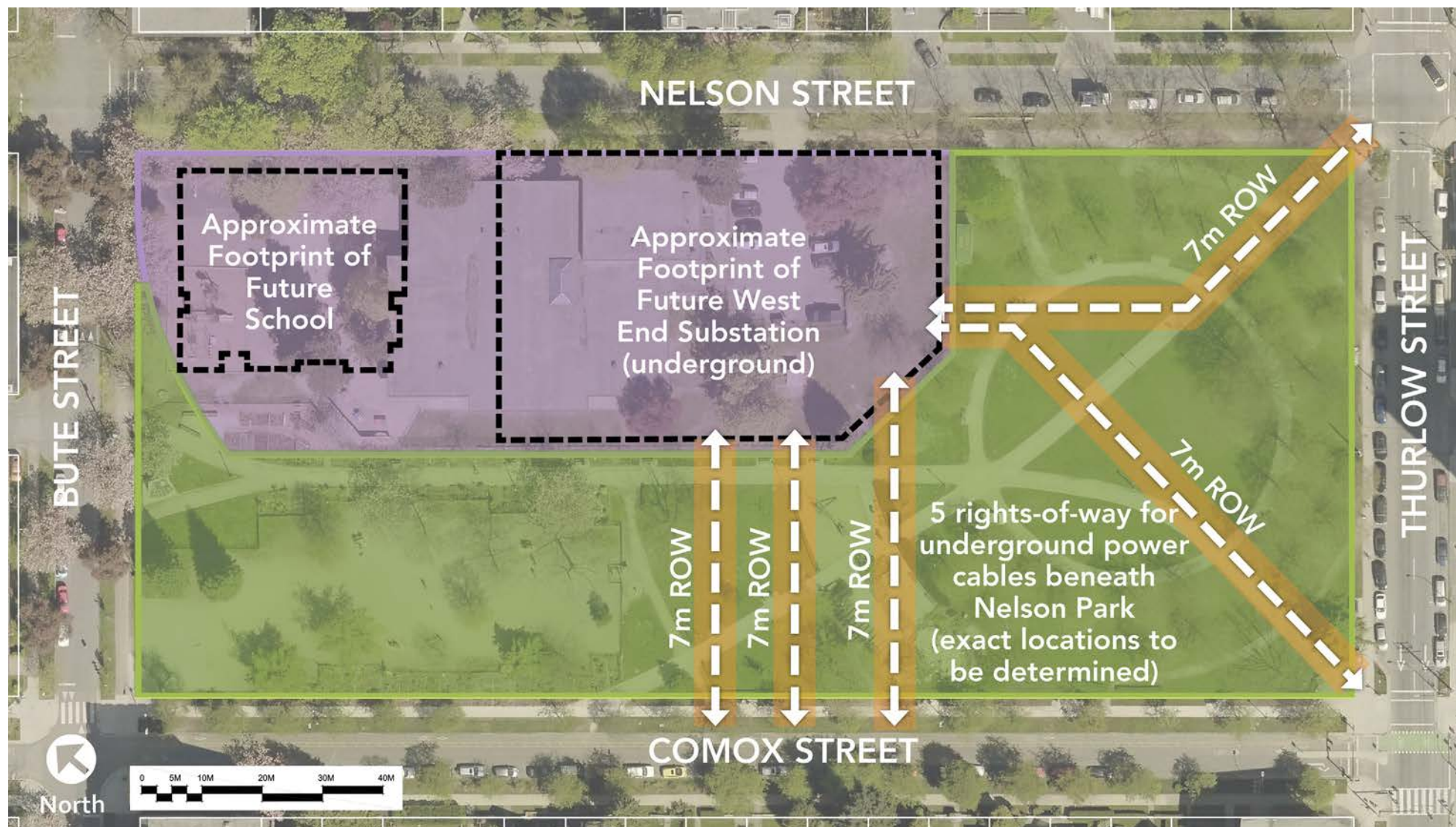


-  **Nelson Park**  
Focus of this study
-  **Lord Roberts Annex Site**  
West End Substation & future school location (outside the scope of this study)



# What is BC Hydro Requesting from the Park Board?

7

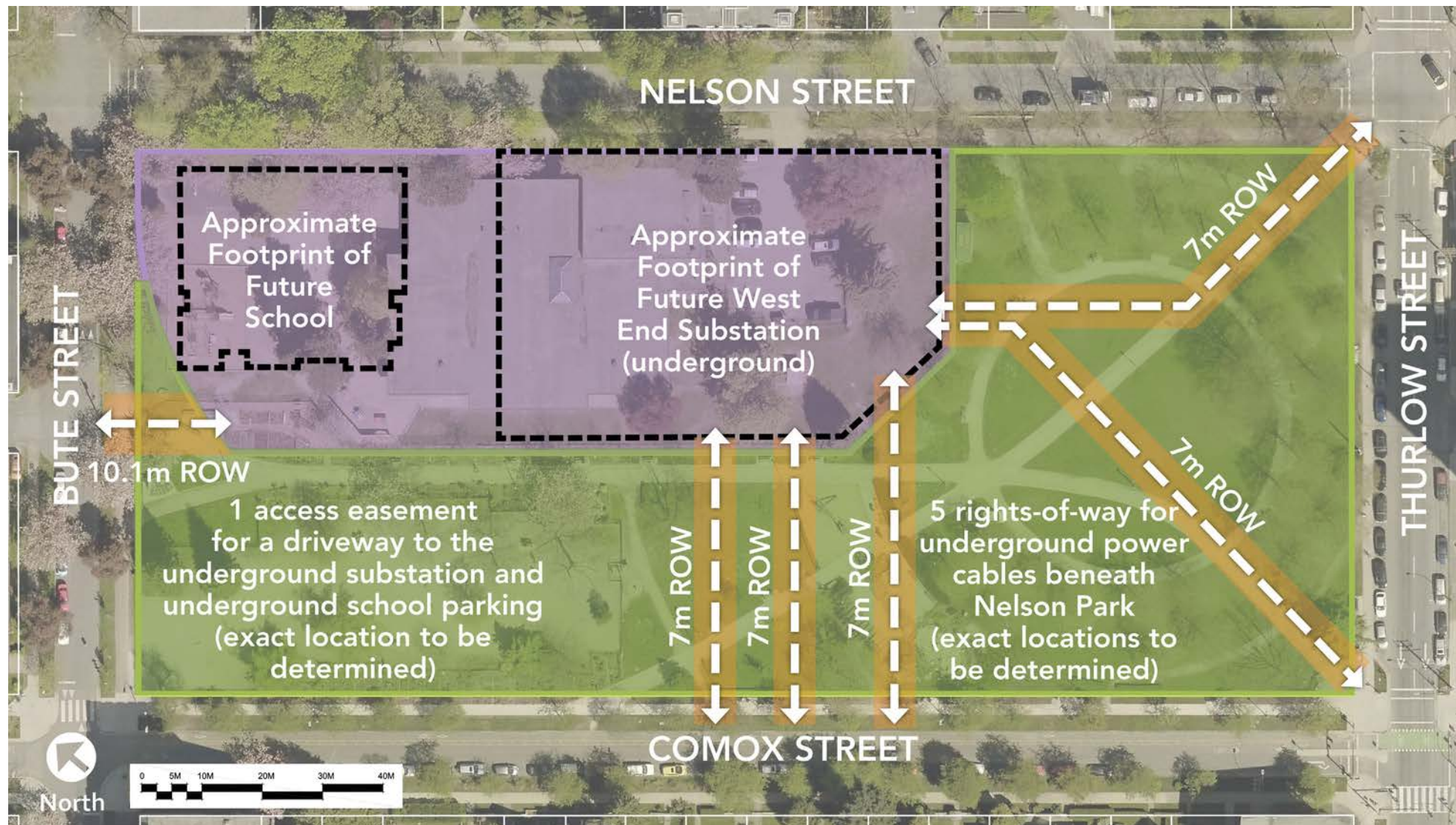


-  **Nelson Park**  
Focus of this study
-  **Lord Roberts Annex Site**  
West End Substation & future school location (outside the scope of this study)



# What is BC Hydro Requesting from the Park Board?

8



- Nelson Park**  
Focus of this study
- Lord Roberts Annex Site**  
West End Substation & future school location (outside the scope of this study)



# Who are the Decision Makers?

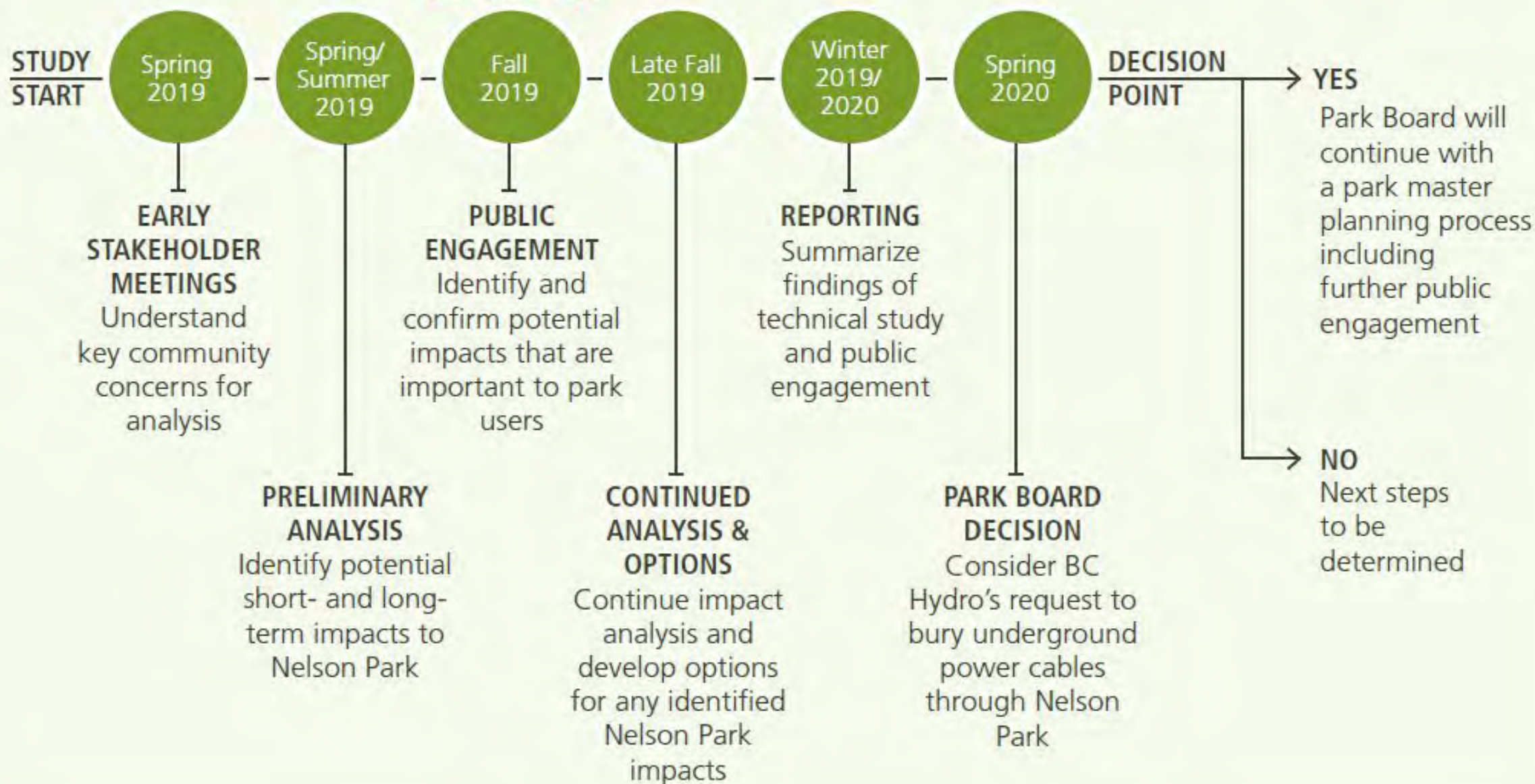


Vancouver Park Board Commissioners are expected to respond to BC Hydro's request in 2020 following review of the technical study and public engagement.



# NELSON PARK IMPACT ASSESSMENT & PUBLIC ENGAGEMENT PROCESS

WE ARE HERE





# How does this Study fit within the larger West End Substation Timeline?





# Why is Park Board Engaging?



Inform community members about the study



Share early findings of the technical study that is currently in progress



Hear your questions and comments about pending changes that could affect Nelson Park





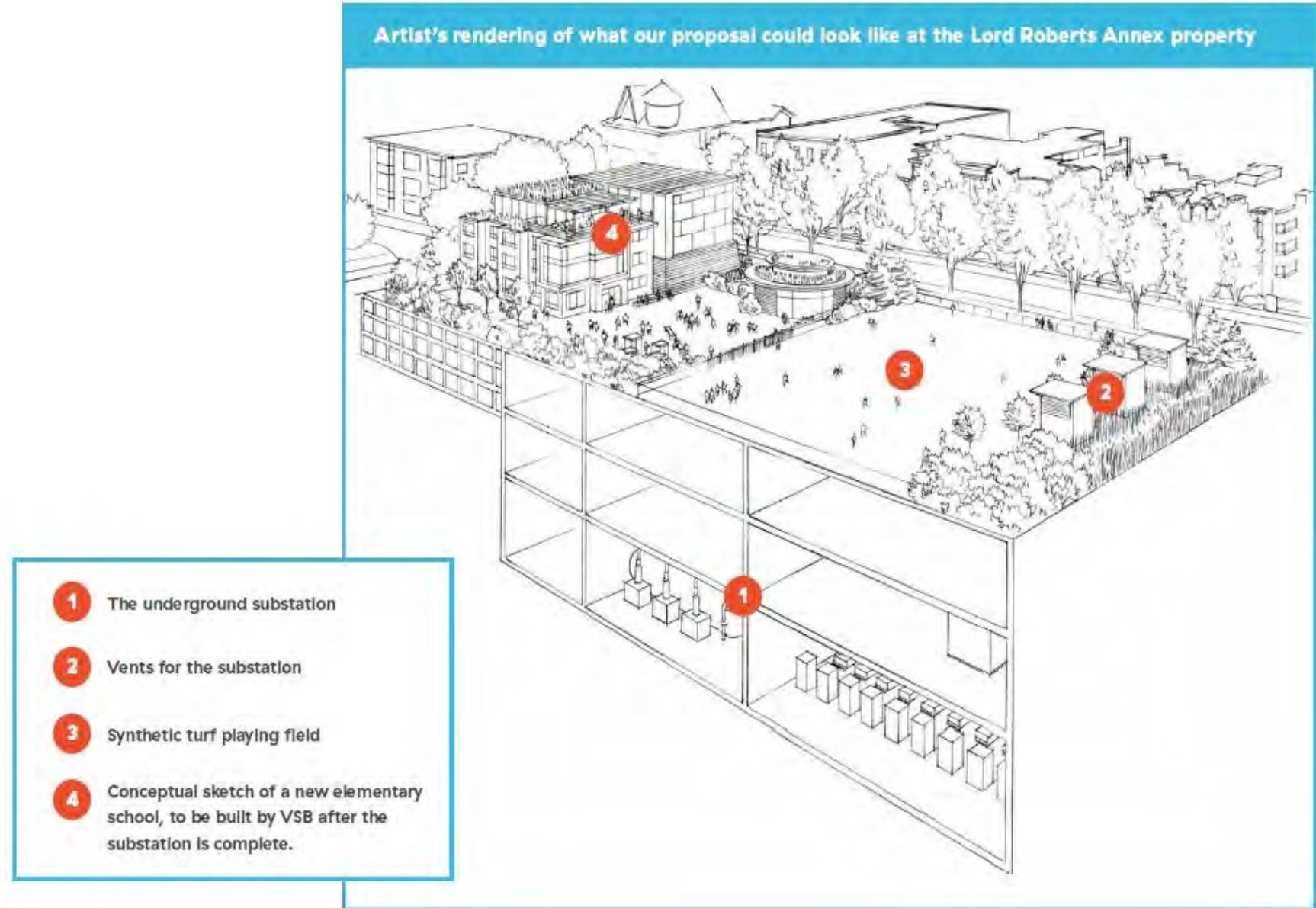
Nelson Park needs  
to be maintained  
for neighbourhood  
use and enjoyment

BC Hydro needs to  
build a new  
substation to  
provide reliable  
power



# BC Hydro's West End Substation Concept

BC Hydro's Substation Concept from the Seed Report, 2017





# Technical Study Topics



**PARK  
FEATURES**



**URBAN  
FOREST**



**SUBSURFACE  
HYDROLOGY**



**GEOTECHNICAL**  
(Ground Engineering)



**CONSTRUCTION  
IMPACTS & UTILITIES**



**ENVIRONMENT  
& WILDLIFE**



**PUBLIC HEALTH  
& NUISANCE**



**PUBLIC  
SAFETY**



# Nelson Park



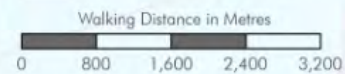


# Park Service Levels

## Park Service Levels - Park Hectares / 1,000 Persons

Of the 98% of Vancouver's population that has access to a park within a 10 minute walk, approximately 46% of that population or 285,000 people live in areas where park service levels are greater than 1.1 ha/1,000 persons

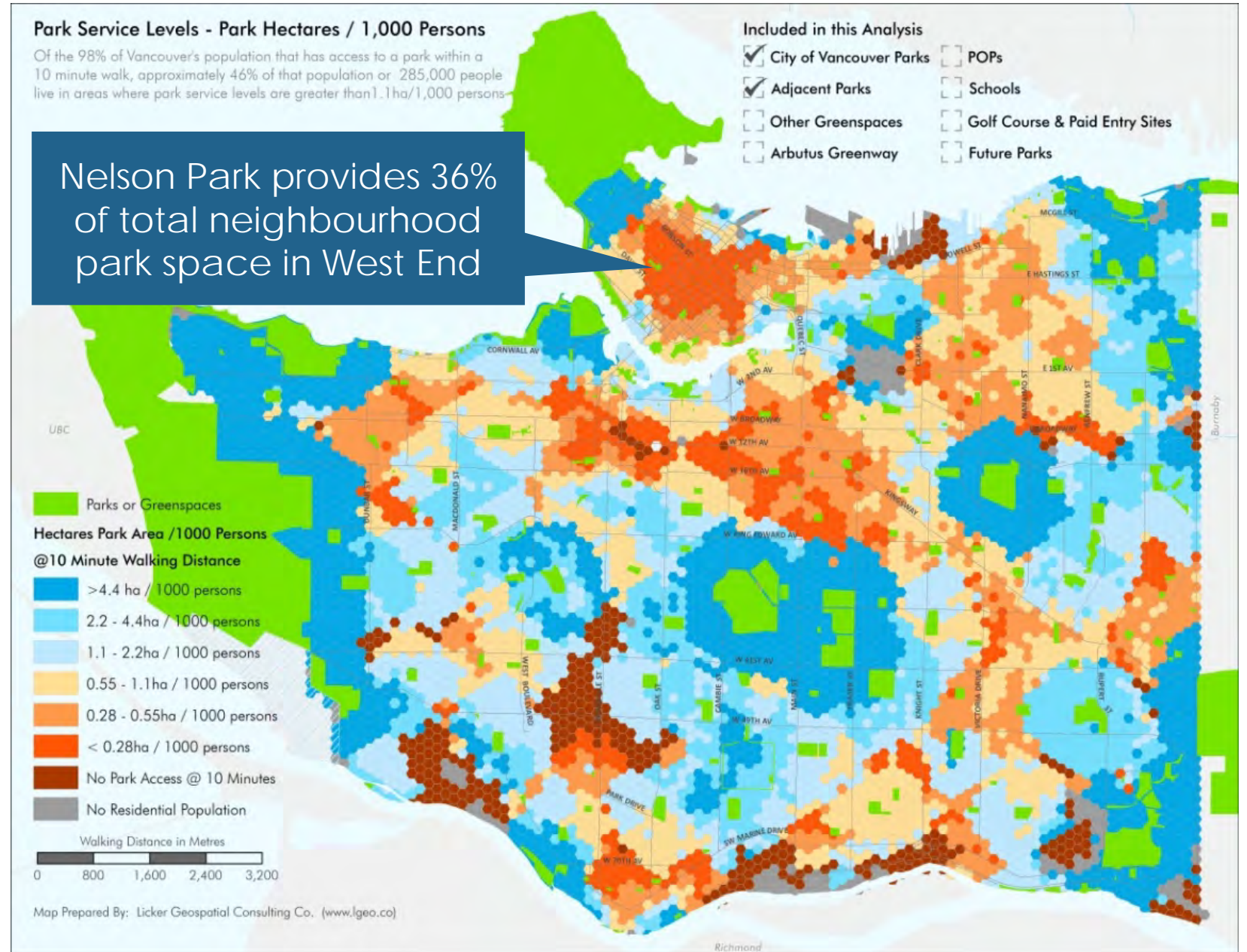
Nelson Park provides 36% of total neighbourhood park space in West End



Map Prepared By: Licker Geospatial Consulting Co. ([www.lgeo.co](http://www.lgeo.co))

## Included in this Analysis

- ☒ City of Vancouver Parks
- ☒ Adjacent Parks
- ☐ Other Greenspaces
- ☐ Arbutus Greenway
- ☐ POPs
- ☐ Schools
- ☐ Golf Course & Paid Entry Sites
- ☐ Future Parks



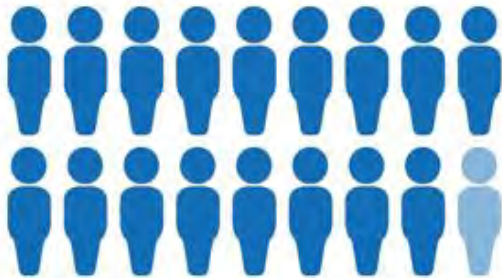


# A Growing West End

18

**47,200**

people live in the West End, making it Vancouver's 4th most populated neighbourhood



**+6%**

Population in the West End grew by 6% from 2011 - 2016, 5<sup>th</sup> fastest in the City

**FOR RENT**

**80%**

of West End residents rent their homes



**78%** of occupied dwellings are apartments in a building with 5 or more stories

At 38%, the West End has the highest walk to work mode share of any neighbourhood in the City, making connections like Nelson Park an important part of the walking network

**38%**



**Walk**

**7%**



**Bike**

**26%**



**Personal Vehicle**

**27%**



**Public Transit**

**2%**



**Other**

**13**

Number of West End neighbourhood parks (including mini parks)

**3.29**  
ha

Total neighbourhood park space in the West End

**0.7**

Average amount of park space (m<sup>2</sup>) per West End resident

**36%**

% of total West End neighbourhood park provided by Nelson Park



# Potential Park Impacts







# Urban Forest

There are 73 trees in Nelson Park that contribute to park character, shading, and environment

- ▶ Estimated 20 trees in Nelson Park removed
- ▶ Trees close to construction areas are at risk of damage to roots or canopy without proper care
- ▶ All trees on Lord Roberts Annex site removed



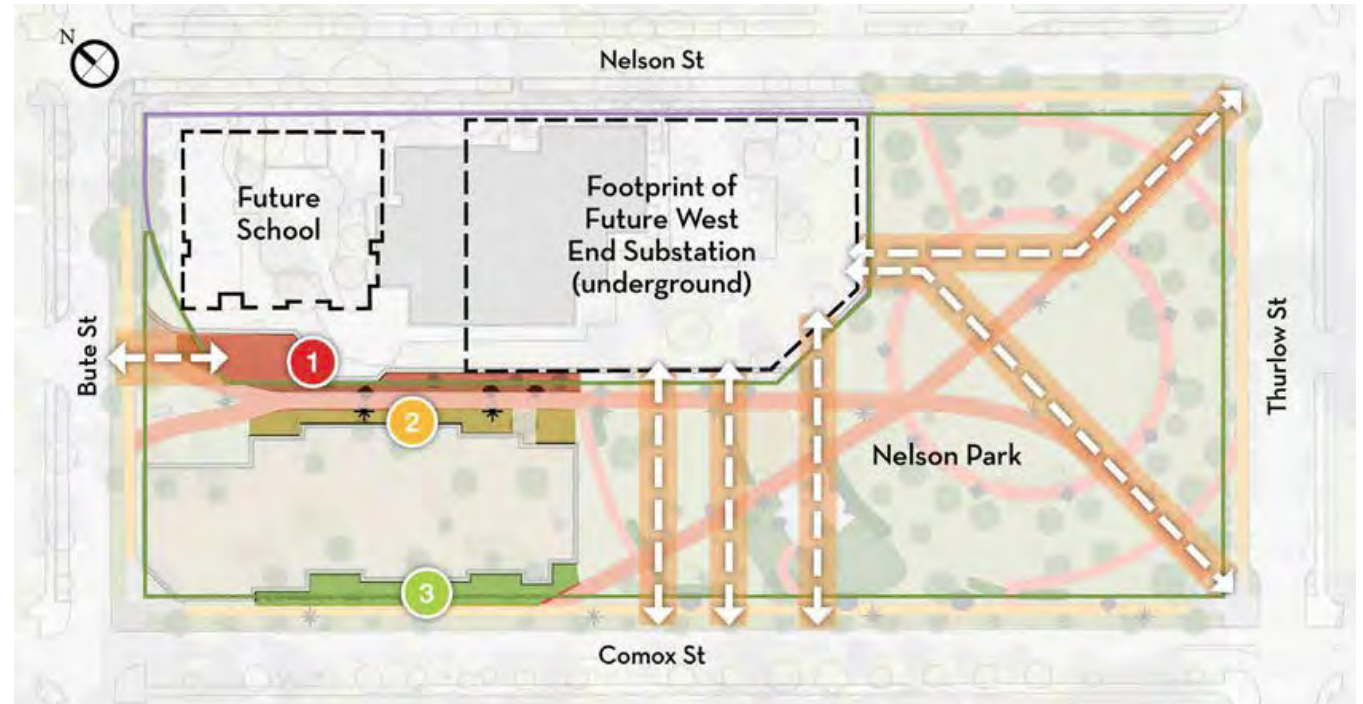




# Community Gardens

Over 80 plots total  
used by residents,  
community groups,  
and programs

- 1 Gardens will be significantly impacted
- 2 Potential impacts that could make some plots unusable for periods of time
- 3 Plots furthest away from construction will likely remain usable throughout the process



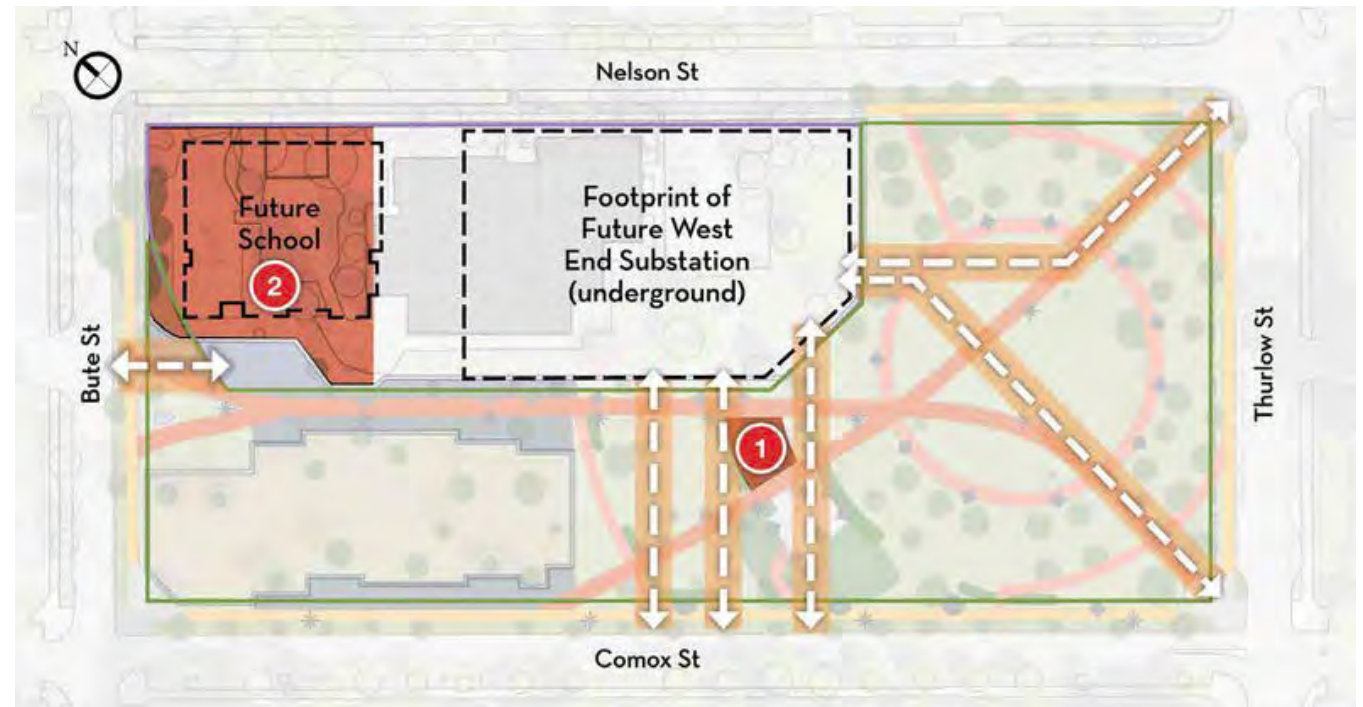




# Access to Play

Nelson Park has a small playground while the school playground offers use outside of school hours

- 1 Nelson Park Playground** would need to be removed during installation of underground cables (2 months + rebuild time)
- 2 Lord Roberts Annex Playground** would need to be removed during construction of substation (5 years) and future school (TBD)







# Community Events & Gatherings

Nelson Park supports a range of community events, gatherings, and social opportunities

- ▶ No direct impacts to the Farmers Market identified although the Lord Roberts parking lot will be unavailable
- ▶ Indirect impacts from construction such as noise and dust could affect events in and near the park
- ▶ BC Hydro has committed to building the underground power cables in winter



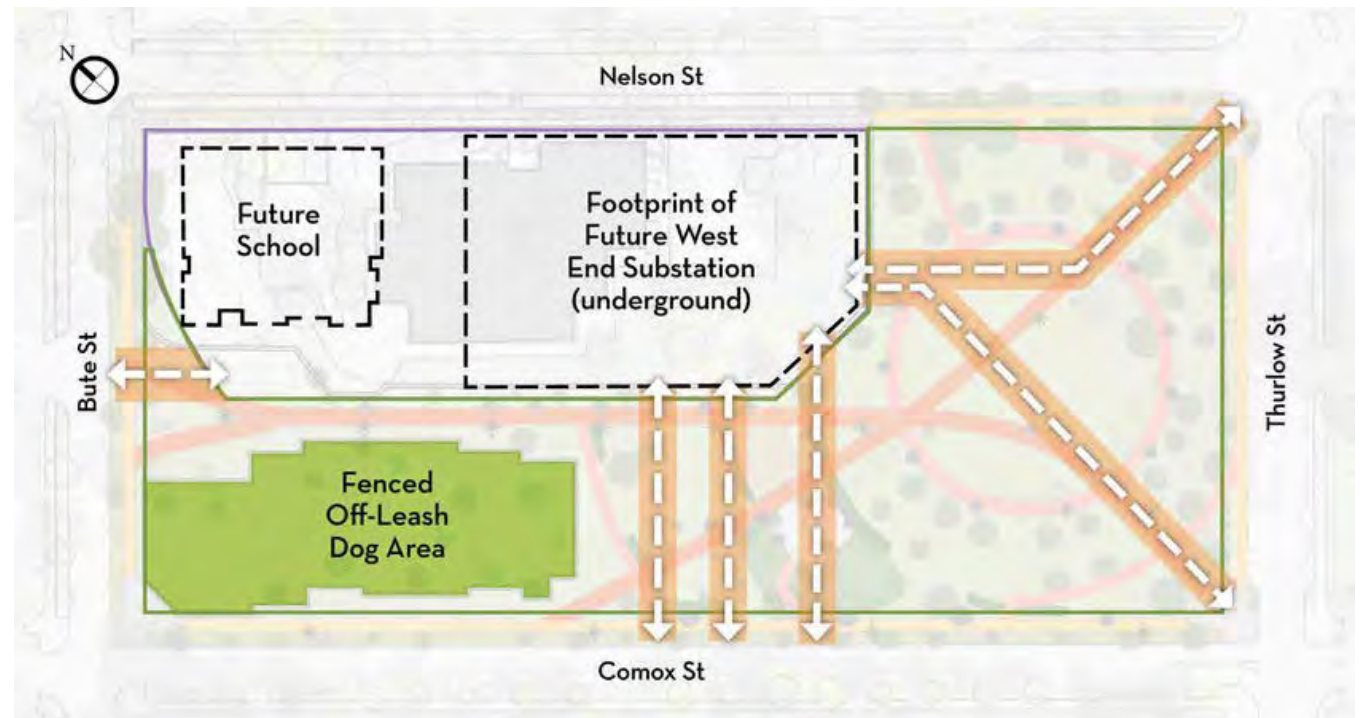




# Dog Off-Leash Area

Nelson Park's off-leash area is the largest central dog park in the West End

- ▶ No direct impacts from proposed alignments
- ▶ Indirect impacts such as dust and noise could have impacts
- ▶ Potential pressure on other parks







# Park Experience

Nelson Park is a valued green space in a dense urban area currently under-served by parks

- ▶ Construction activities may affect the quiet park atmosphere
- ▶ Some park space will be temporarily unavailable during construction
- ▶ Some park uses may be shifted to different locations







# Public Health & Safety

Concerns identified about EMF, substation operation, and safe park use

- ▶ Public concerns about EMF (Electric & Magnetic Fields)
- ▶ Impacts like noise, air quality, and vibration need to be managed
- ▶ Safe public use of the park is important

- As BC Hydro develops their detailed design, the Vancouver Park Board will continue to review documentation and data to confirm all reasonable measures are taken with regards to EMF
- The Vancouver Park Board has requested Vancouver Coastal Health Authority's independent assessment regarding public health impacts including EMF





# Construction Impacts

Underground cable installation will have direct impacts on the park and substation construction will have indirect impacts.

## For Example:

- ▶ Potential changes to construction schedule
- ▶ Potential construction footprint into park
- ▶ Temporary closures to pathways
- ▶ Traffic activity around the park
- ▶ Visual impacts from construction hoarding (fencing) or other visible construction works





We are continuing to learn about how BC Hydro's request may impact Nelson Park.



Deadline for  
comments is  
November 15, 2019

# Discussion Guide

**NELSON PARK**  
Impact Assessment & Public Engagement

**DISCUSSION GUIDE**

Thank you for your interest in the Vancouver Park Board's Nelson Park Impact Assessment and Public Engagement process.

**ABOUT YOU**

Please tell us a bit about yourself to help us understand your process. All information is confidential.\*

5. What do you usually do when you visit Nelson Park?

- ☐ Walk through
- ☐ Cycle through
- ☐ Relax or socialize (sunbathe, sleep, read, take a break)
- ☐ Visit the off-leash dog area
- ☐ Work in the community gardens
- ☐ Attend the West End Farmers Market
- ☐ Attend another community event (please specify): \_\_\_\_\_
- ☐ Do therapeutic activities (related to healthcare)
- ☐ Visit the playground in Nelson Park
- ☐ Visit the playground at Lord Roberts Annex Sch
- ☐ Run, play sports, do other exercise or fitness ac
- ☐ Play in an unstructured way (toss a ball or fris
- ☐ Eat or picnic
- ☐ Other (please specify): \_\_\_\_\_

6. What is your age range?

<input type="checkbox"/> 19 and under	<input type="checkbox"/> 50 to 59
<input type="checkbox"/> 20 to 29 years	<input type="checkbox"/> 60 to 69
<input type="checkbox"/> 30 to 39 years	<input type="checkbox"/> Over 70
<input type="checkbox"/> 40 to 49 years	<input type="checkbox"/> I prefer

7. Are you a West End resident?

- ☐ Yes
- ☐ No (please write where you live): \_\_\_\_\_
- ☐ I'm not sure

\* Information collected for this questionnaire is voluntary. Collection is in accordance with the Protection of Privacy Act (Canada), and is protected in accordance with the Access to Information Act (Canada), and is protected in accordance with the Access to Information Act (Canada), and is protected in accordance with the Access to Information Act (Canada).

**YOUR COMMENTS**

After reviewing the Discussion Guide, please use this form to share your thoughts about BC Hydro's request to bury underground power cables through Nelson Park and potential impacts on Nelson Park related to the construction of the West End Substation at the adjacent Lord Roberts Annex site.

Your comments will be shared with Park Board Commissioners, along with the findings of the technical study, as they make their decision whether or not to approve BC Hydro's request.

1. What do you think are the most important topics for the Vancouver Park Board to consider when making a decision about BC Hydro's request to bury underground power cables through Nelson Park? Choose up to 3 topics below. (Refer to pages 7-14 for details.)

- ☐ Access to Play
- ☐ Community Events and Gatherings
- ☐ Community Gardens
- ☐ Construction Impacts
- ☐ Dog Off-Leash Area
- ☐ Park Experience
- ☐ Public Health
- ☐ Urban Forest
- ☐ Other (please specify): \_\_\_\_\_

Please tell us why.

2. Are there potential impacts on Nelson Park not reported in the Discussion Guide that you think are important to consider?

\_\_\_\_\_

\_\_\_\_\_

\_\_\_\_\_

\_\_\_\_\_

NELSON PARK IMPACT ASSESSMENT & PUBLIC ENGAGEMENT - PUBLIC QUESTIONNAIRE | 15



## Next Steps

Fall /  
Winter  
2019

Continued analysis of Nelson Park issues and potential mitigation options

Winter /  
Spring  
2020

Reporting on findings from technical analysis and public engagement

2020

Anticipated Park Board consideration of BC Hydro's request for underground power cables through Nelson Park



# Join the Conversation



- ▶ Read the display boards & discussion guide
- ▶ Ask questions
- ▶ Share your comments
- ▶ Participate in community conversations (after this presentation)



# Stay Connected



[vancouver.ca/nelsonparkrow](http://vancouver.ca/nelsonparkrow)  
*Sign up for study email updates*



Vancouver Park Board @parkboard



Vancouver Park Board @parkboard



Contact the Park Board through the study website

[vancouver.ca/nelsonparkrow](http://vancouver.ca/nelsonparkrow)





# NELSON PARK

Impact Assessment & Public Engagement

Thank you!