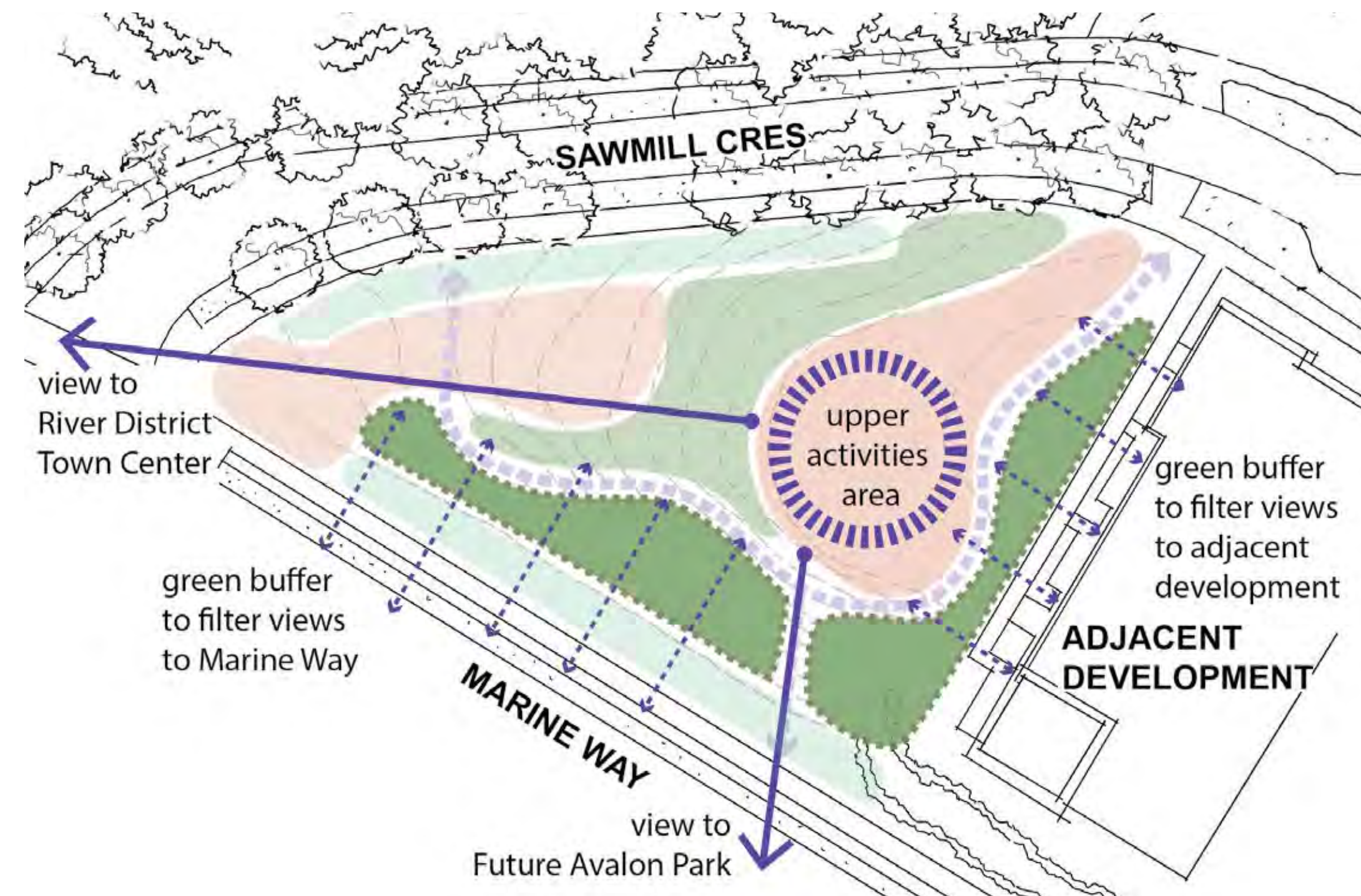
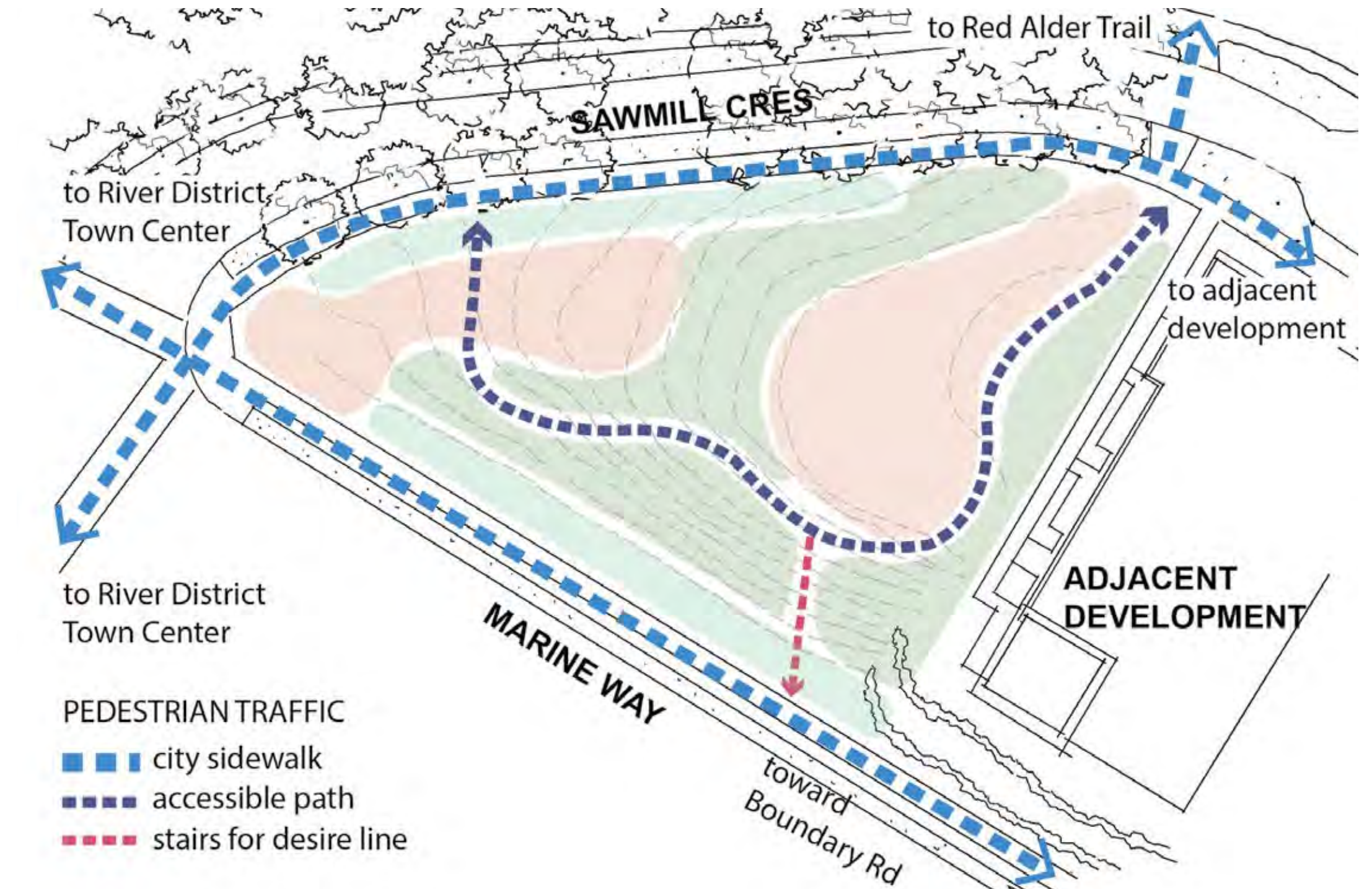


Analysis

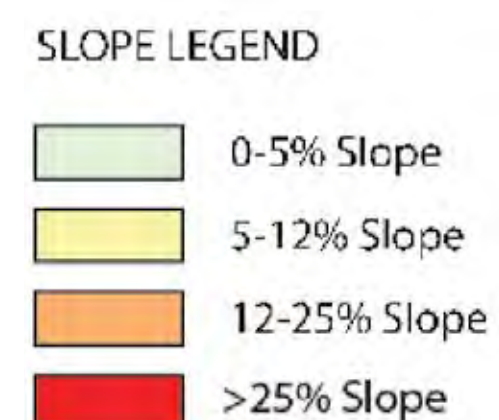
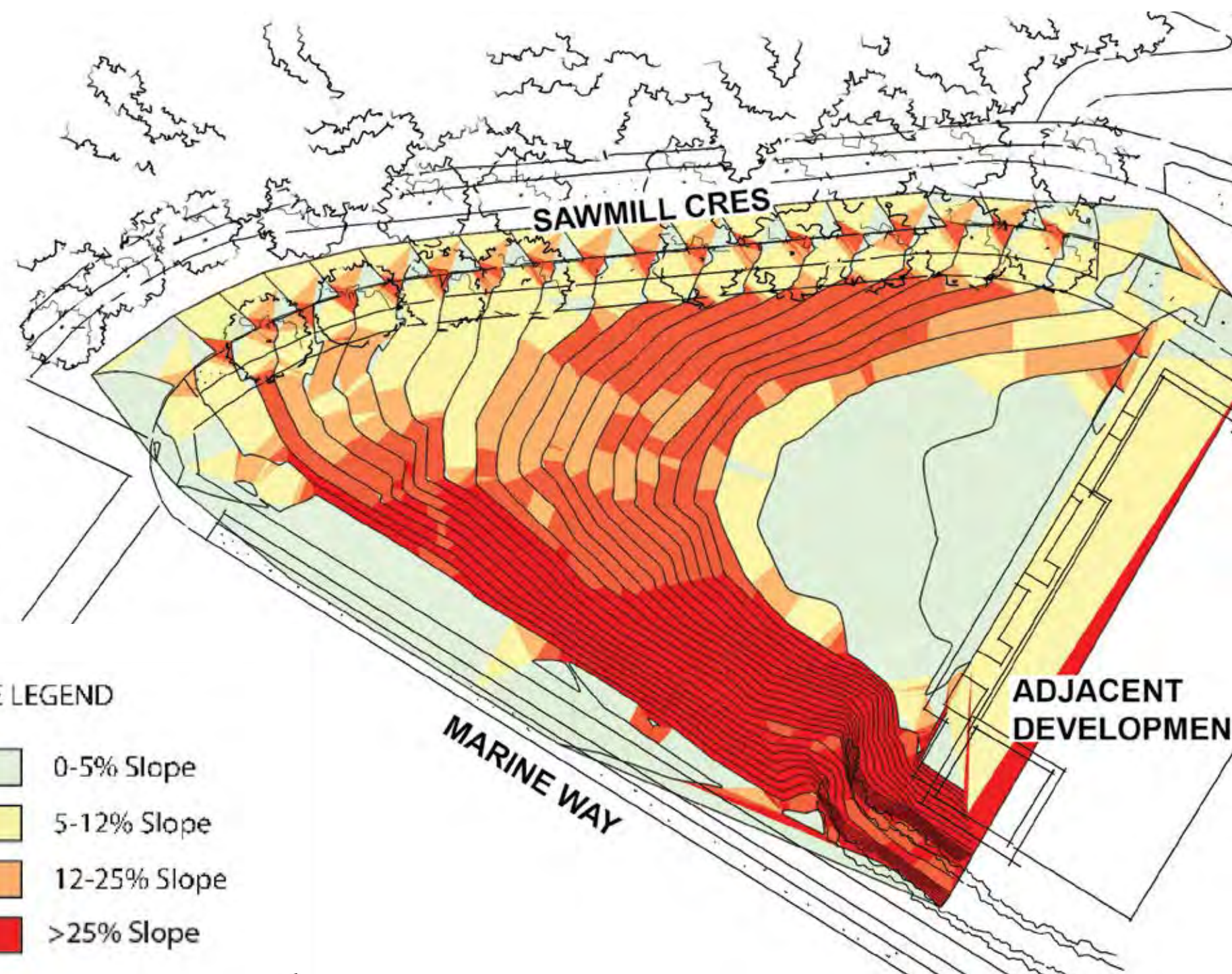
The small site has steep slopes and will require using the existing flatter areas for programmed activities. The steep slopes of the site guide water to the perimeter creating wet conditions at both the north and south ends. The entire site faces south and will receive a lot of sun, which means it can support a variety of plantings and will require shade trees for comfort. The highest area of the park provides excellent views of the park as well as the adjacent neighbourhood. It is possible to create an accessible route through the park and provide stairs for more direct access to Marine Way.



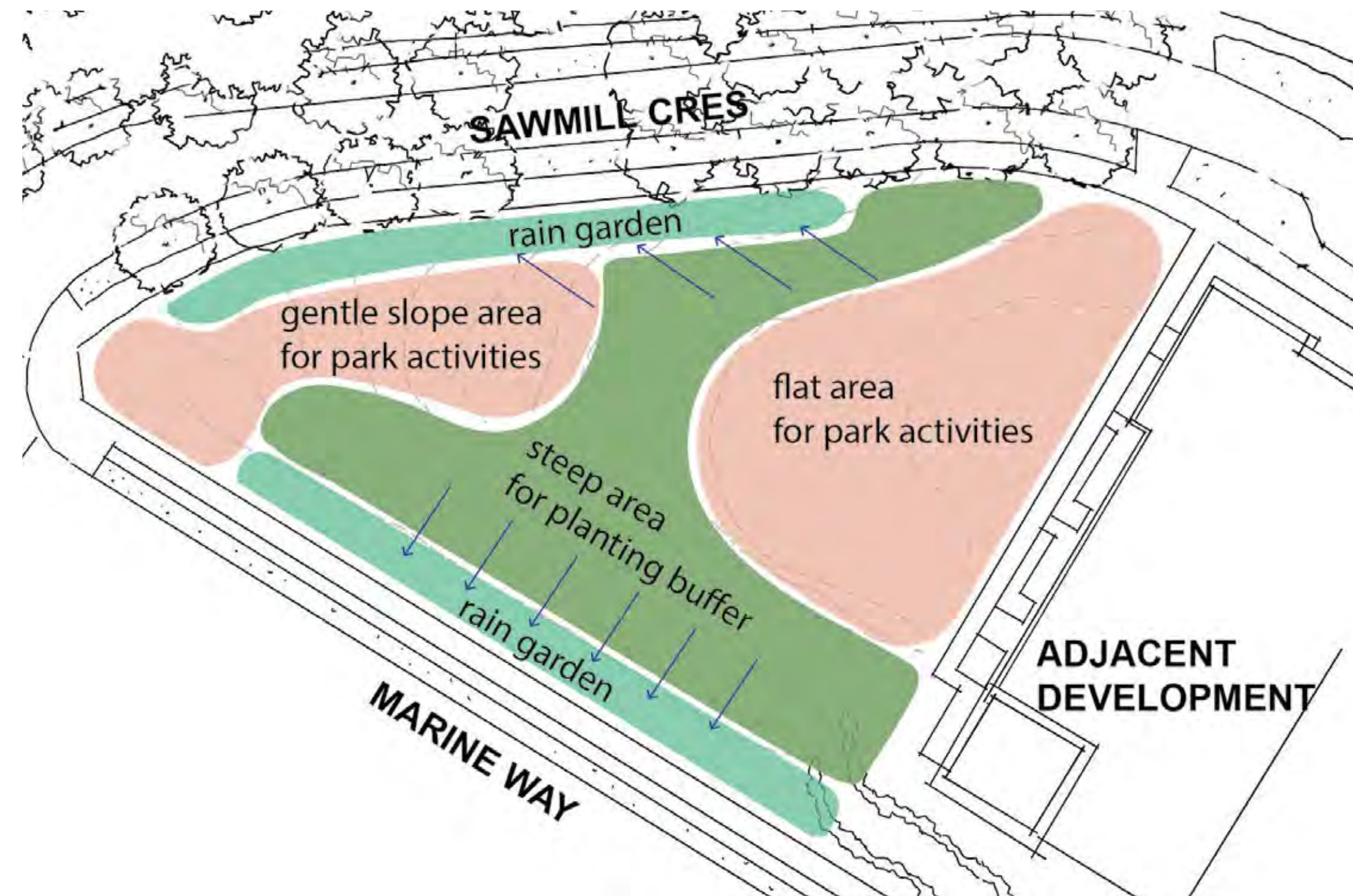
VIEW OPPORTUNITIES



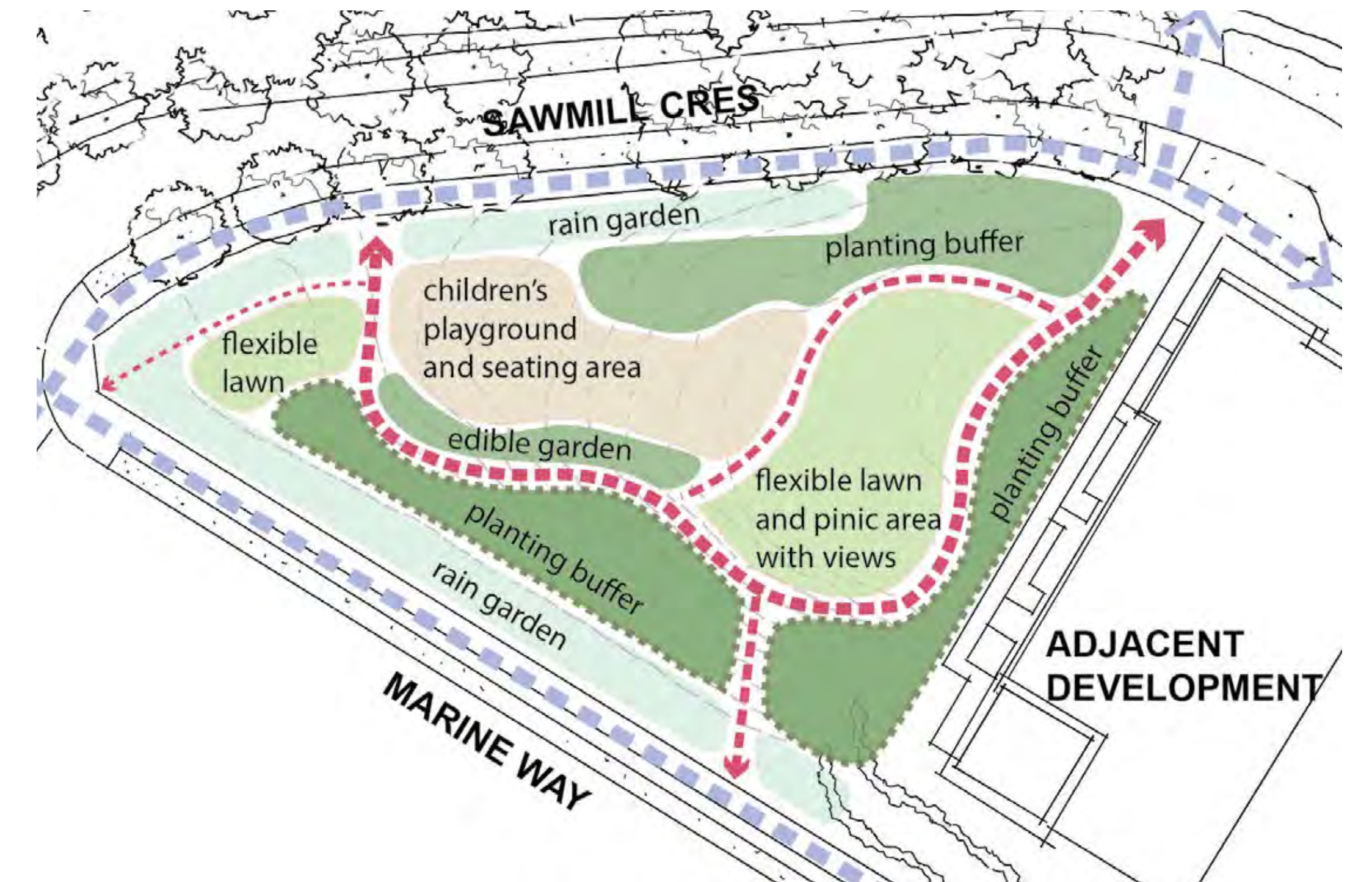
PROPOSED CIRCULATION



TOPOGRAPHY



TOPOGRAPHY ANALYSIS



PROPOSED PROGRAMS