

Aerial View
East Fraser Lands

What's happening?

The Vancouver Park Board is building a new park in the East Fraser Lands (EFL) neighbourhood and is seeking your input on preliminary design concepts. Promontory Park (0.75 ha) is bounded by Sawmill Crescent to the north and Marine Way to the South.

The preliminary designs for Promontory Park are based on previous public consultation and the City Council and Park Board approved East Fraser Lands Detail Design Guidelines (2010).



Promontory Park Site
East Fraser Lands

Project Timeline

WE ARE HERE



Goals

Encourage community interactions and recreation opportunities

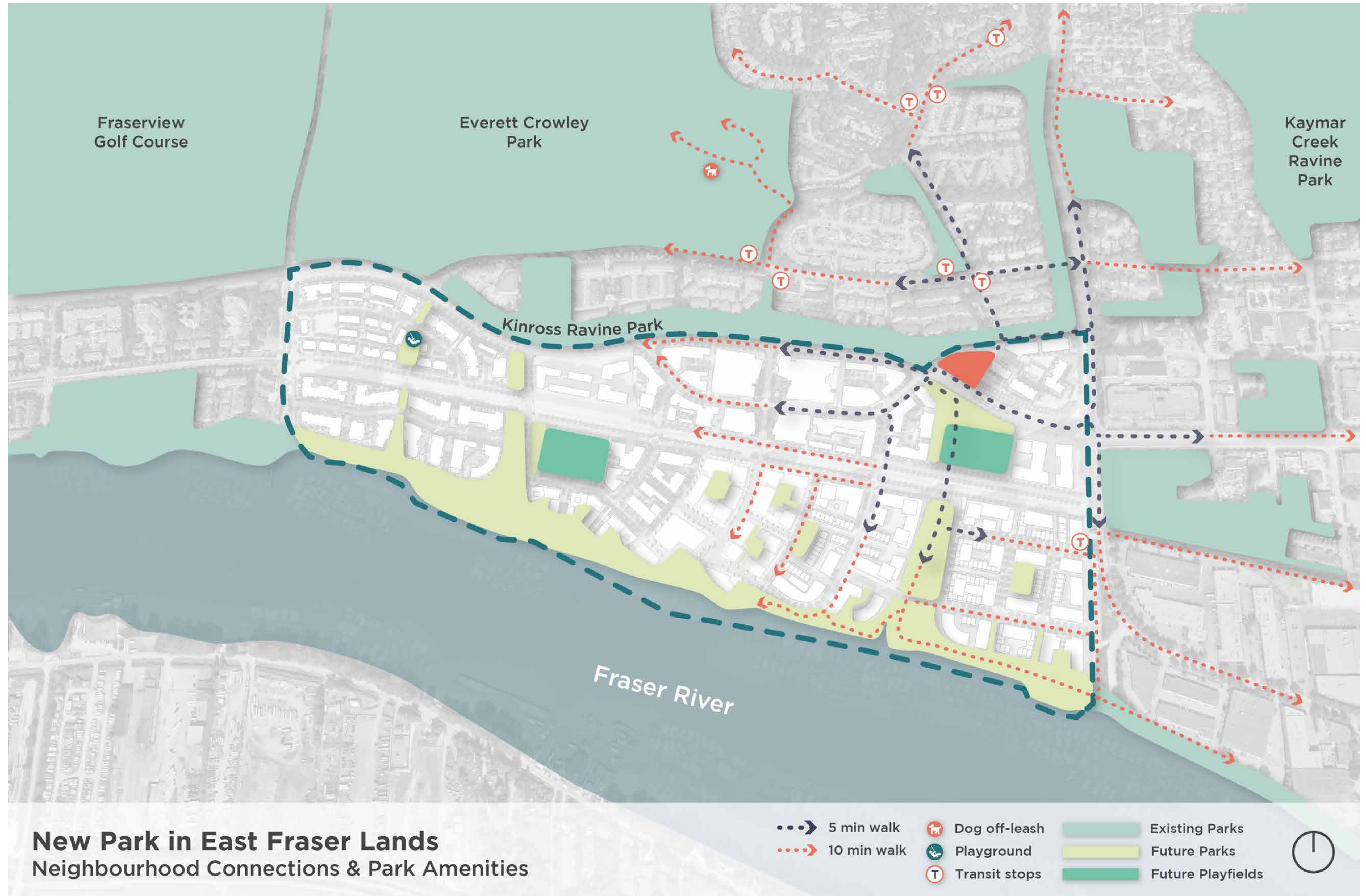
- Provide flexible spaces for gathering and activities
- Create engaging and fun places for children and families

Establish connections to adjacent neighbourhoods and parks

- Foster clear circulation through park
- Provide universally accessible circulation where possible
- Create continuity with existing parks and public spaces in EFL by providing elements of similar character

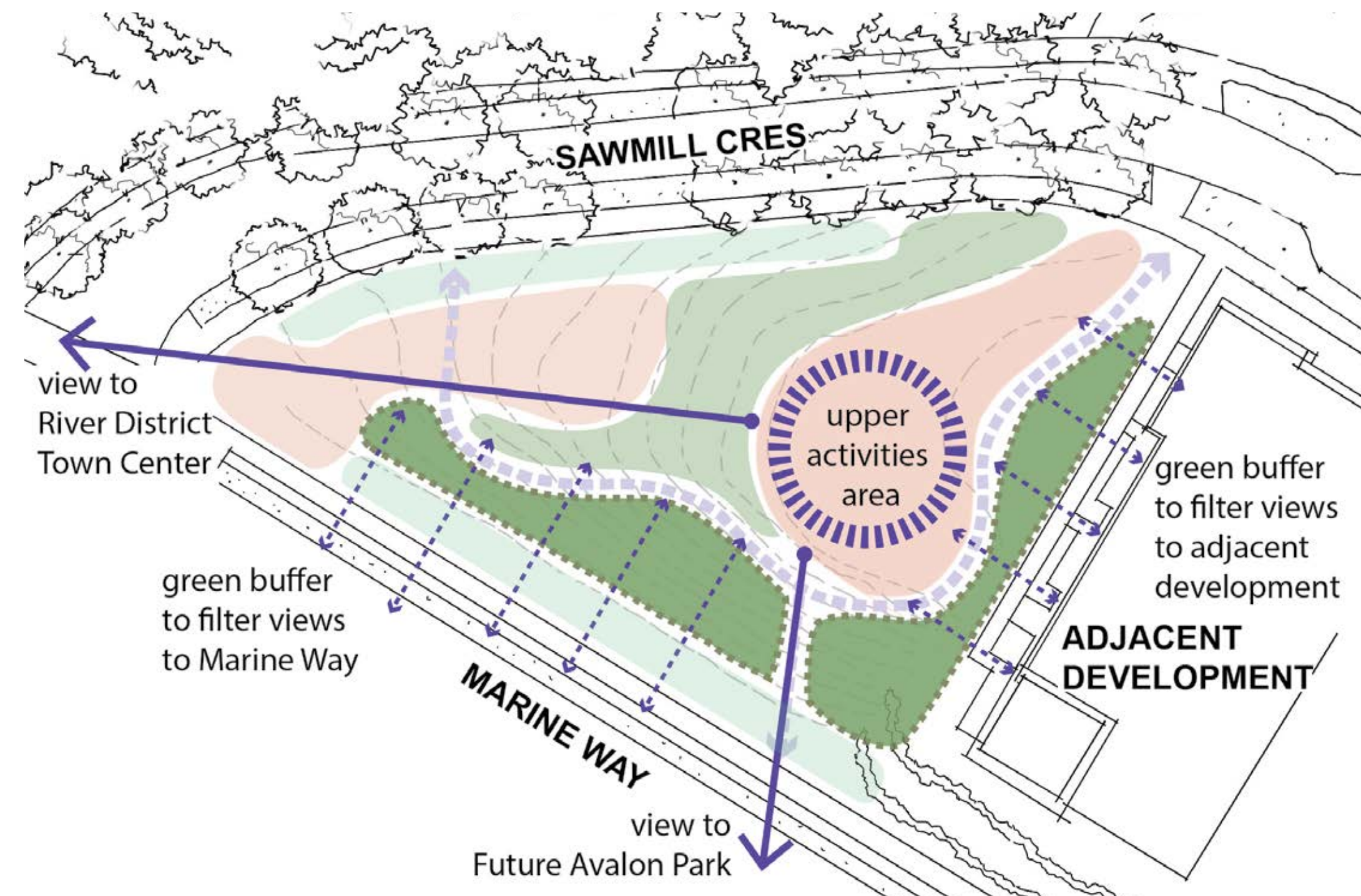
Create and enhance natural system

- Establish a functional ecological corridor through Red Elder Trails, current and future EFL parks, and Fraser River
- Use landscape elements to manage and filter stormwater and enhance natural habitats

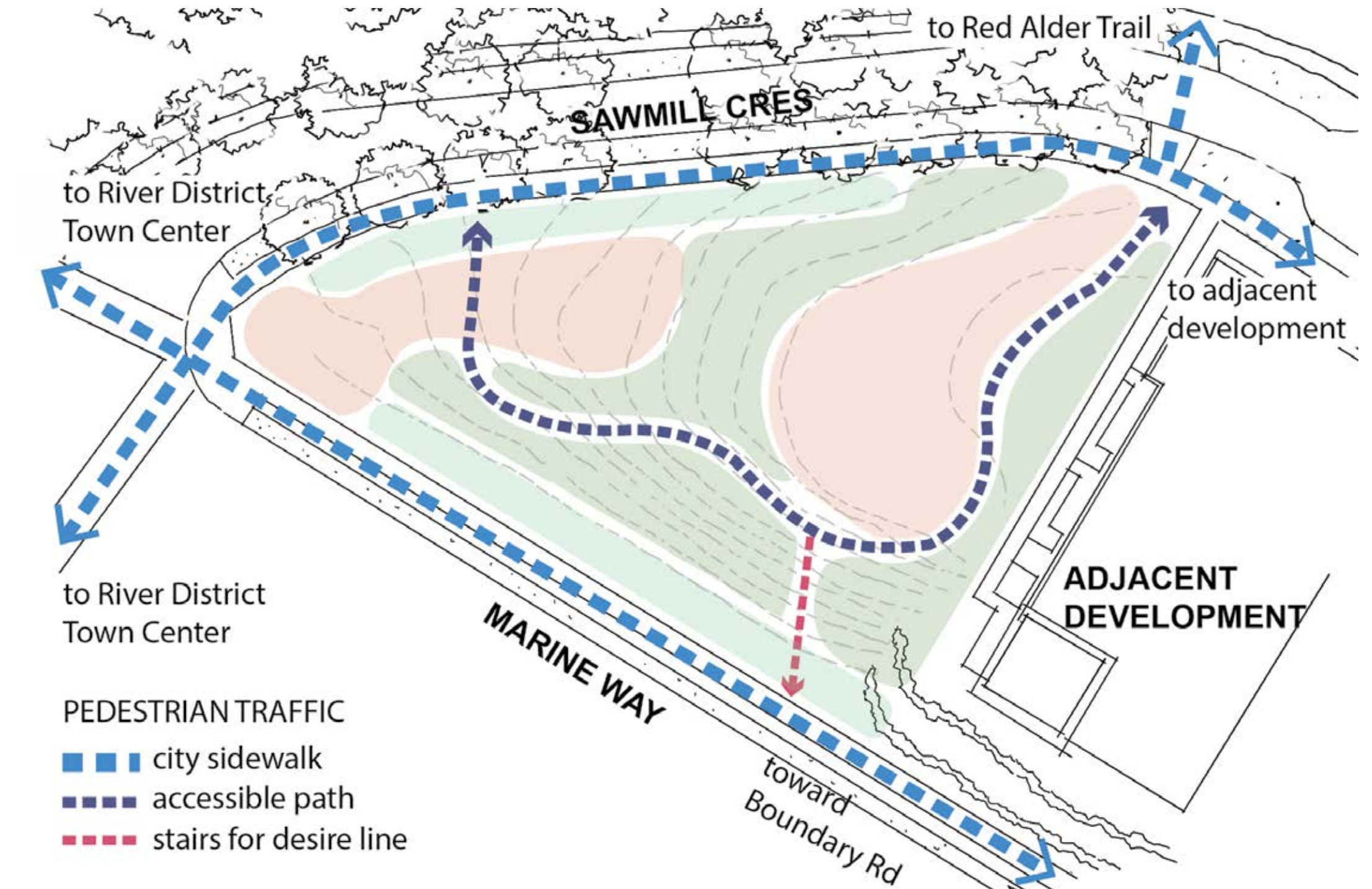


Analysis

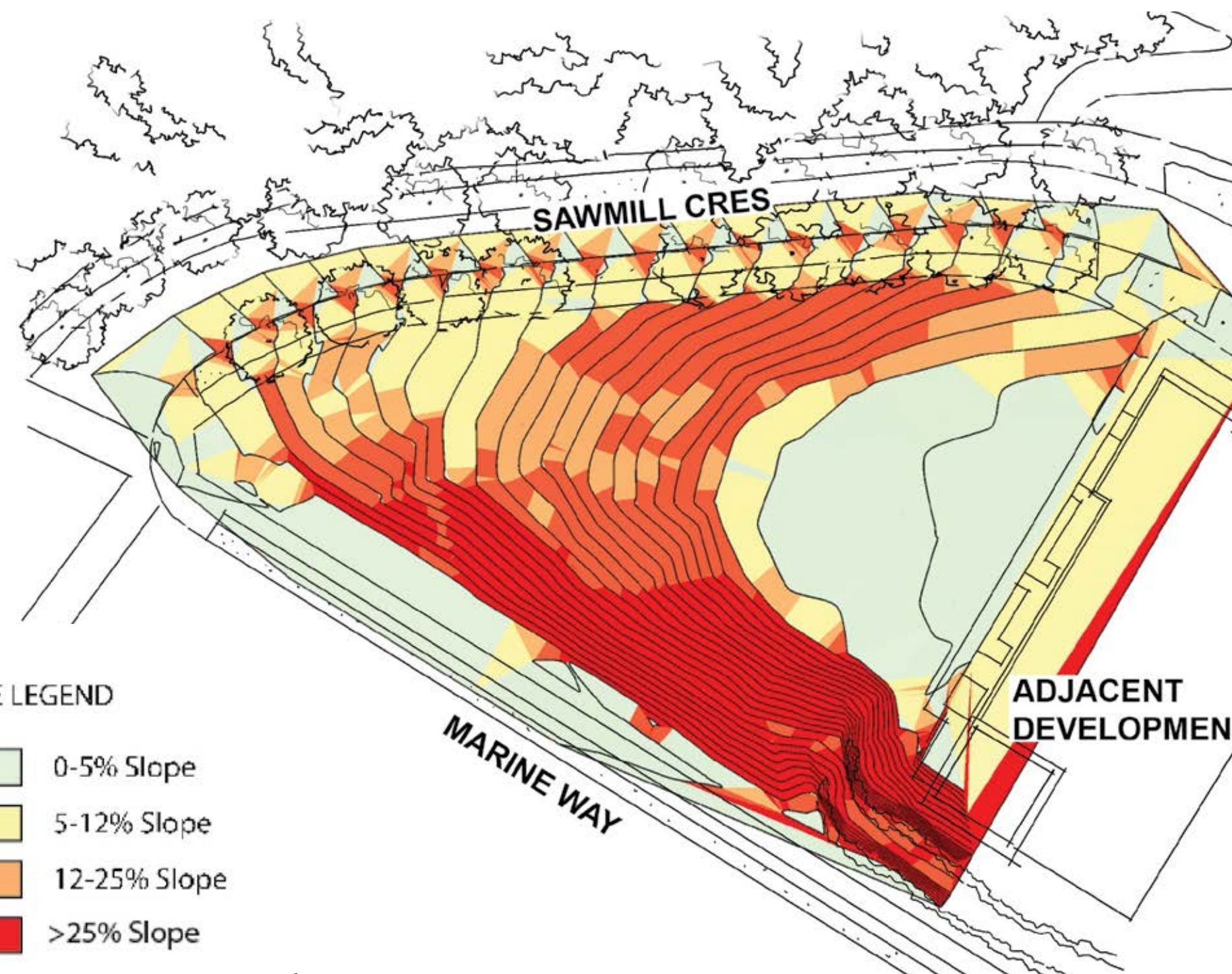
The small site has steep slopes and will require using the existing flatter areas for programmed activities. The steep slopes of the site guide water to the perimeter creating wet conditions at both the north and south ends. The entire site faces south and will receive a lot of sun, which means it can support a variety of plantings and will require shade trees for comfort. The highest area of the park provides excellent views of the park as well as the adjacent neighbourhood. It is possible to create an accessible route through the park and provide stairs for more direct access to Marine Way.



VIEW OPPORTUNITIES

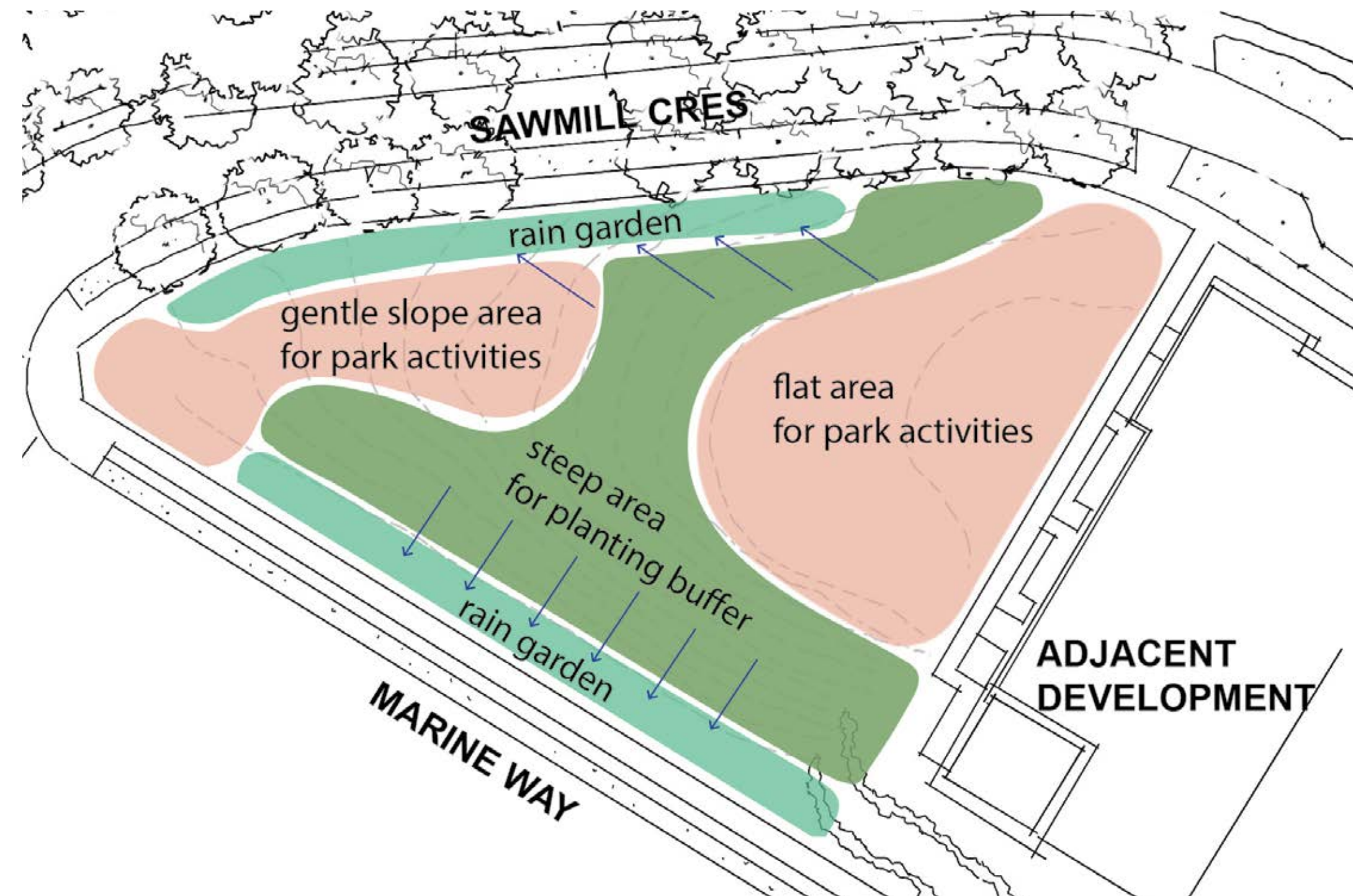


PROPOSED CIRCULATION

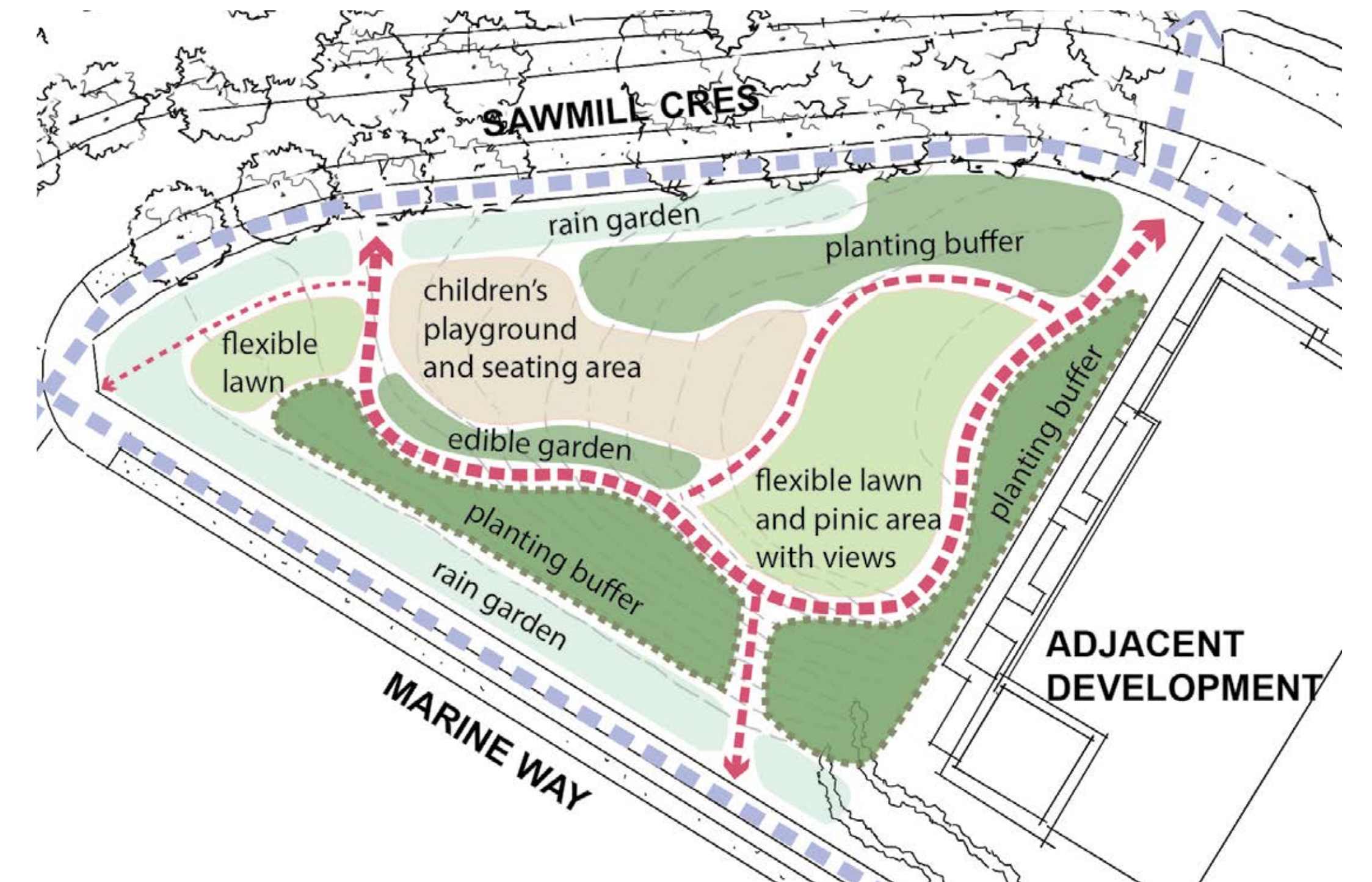


- SLOPE LEGEND
- 0-5% Slope
 - 5-12% Slope
 - 12-25% Slope
 - >25% Slope

TOPOGRAPHY



TOPOGRAPHY ANALYSIS



PROPOSED PROGRAMS



Preliminary Design Concept

The design seeks to maximize the space in this small park by working with the existing slope to create different 'rooms' for play and leisure while maintaining clear east-west sightlines. Trees along the paths provide much needed shade at this sunny site and a small play area has been integrated into both flat and sloped areas of the park as few playgrounds exist in the neighbourhood.

A rain garden and bioswale at the north and south ends of the park gather and infiltrate stormwater while also enhancing habitat. At the south end of the park, a wildflower meadow benefits from the southern exposure and helps to stabilize the steep slope. To provide an accessible route through the park, the main pathway curves to decrease the slope and accommodate all park visitors.



PERSPECTIVE

What are your favourite play equipment types?



Playground

The small playground has the capacity for a few great play pieces and lots of imagination. The space can be maximized by incorporating the slope of the park into play structures like an hill slide. Which of the following playground equipment would you most like to see?

Anything we missed?



Hill Slide



Swings



Sand Play Area



Springer



Playhouse



Obstacle Course

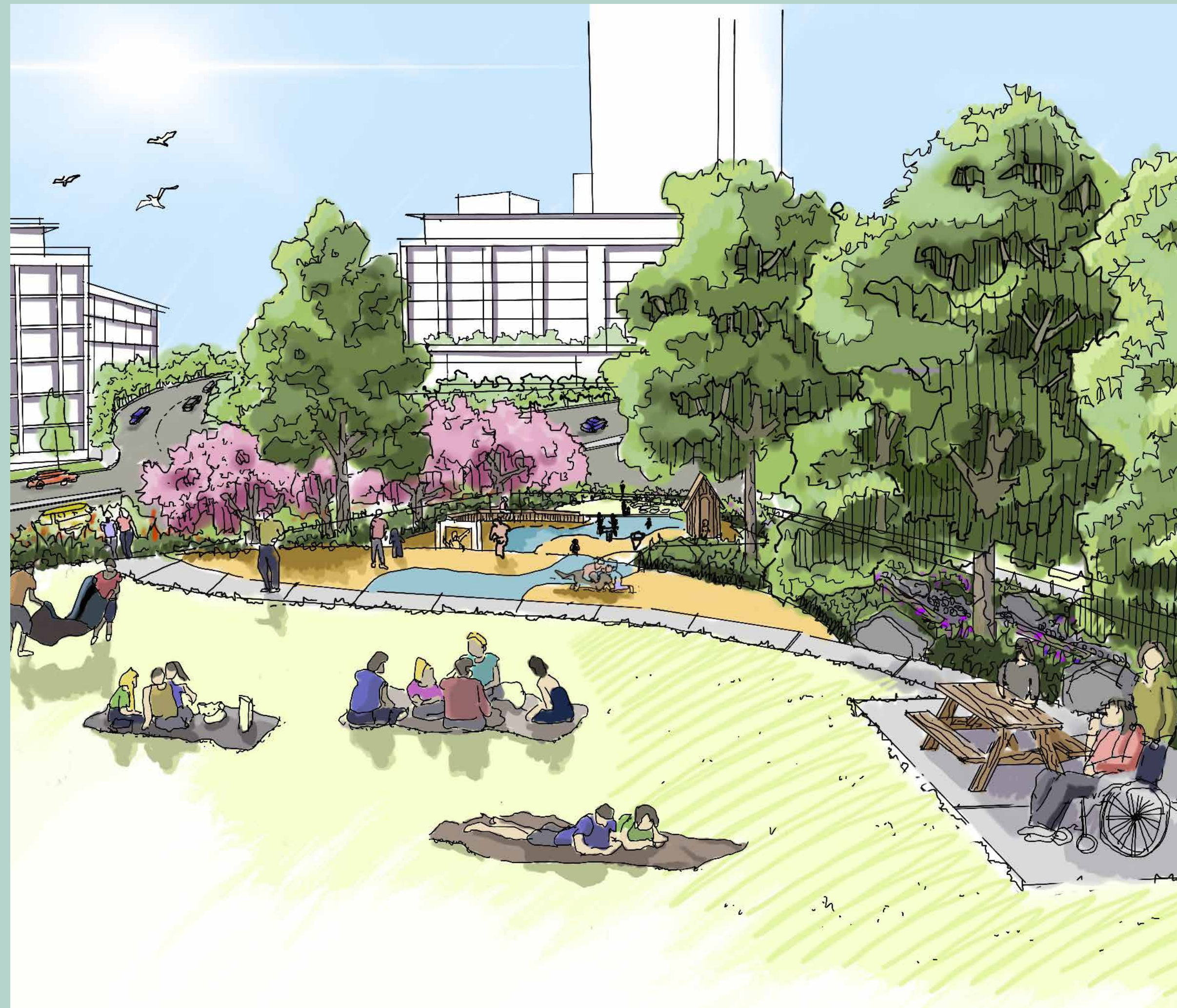


Spinner



Climbers

What features and furnishings are you most excited about?



Site features and furnishings

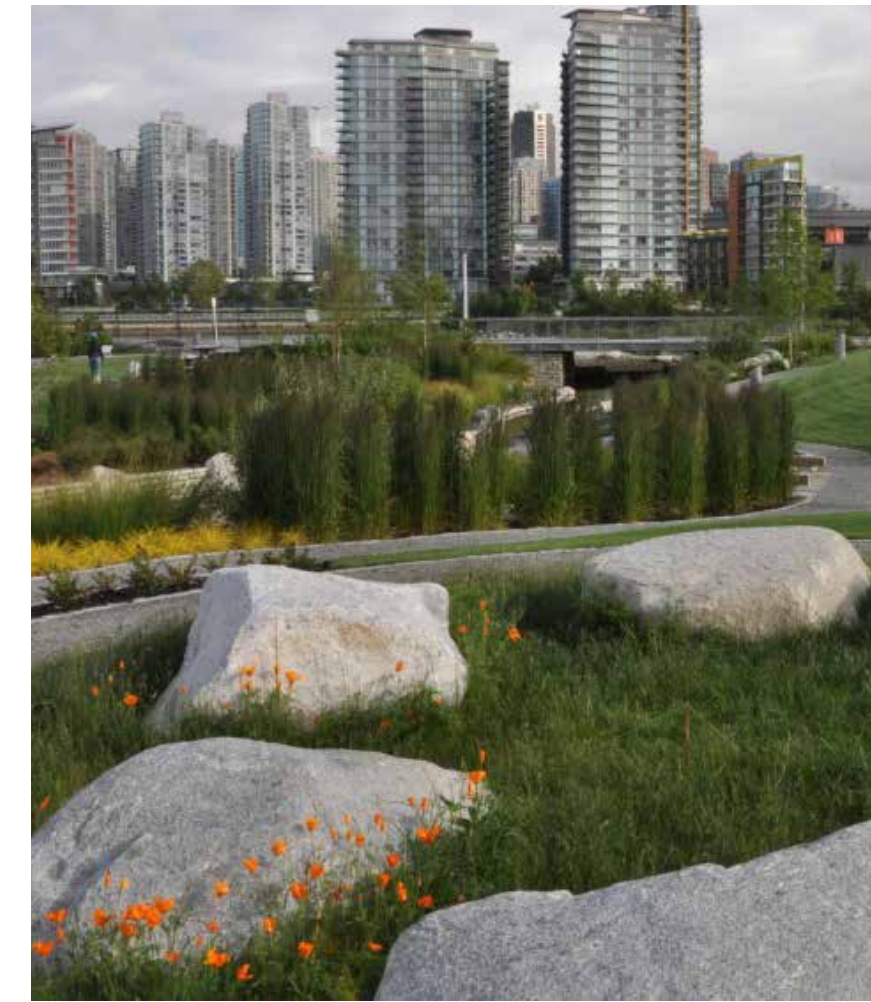
To fit in with the character of the East Fraser Lands neighbourhood, natural materials like stone and wood can be incorporated into the park in many ways including with furnishings. Of the features and seating pictured, which are your favourites?

Anything we missed?

Park Features



Path



Boulders



Flowering Trees



Rain Garden



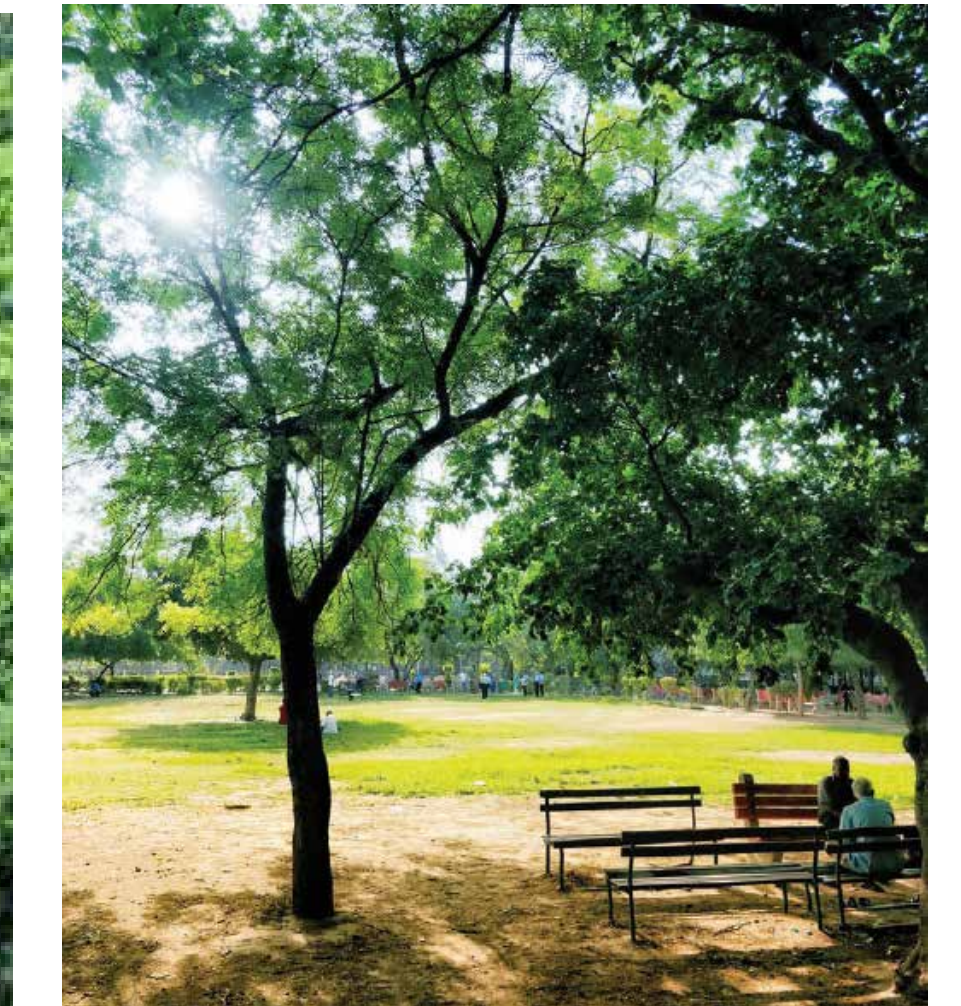
Wildflower Meadow



Lawn

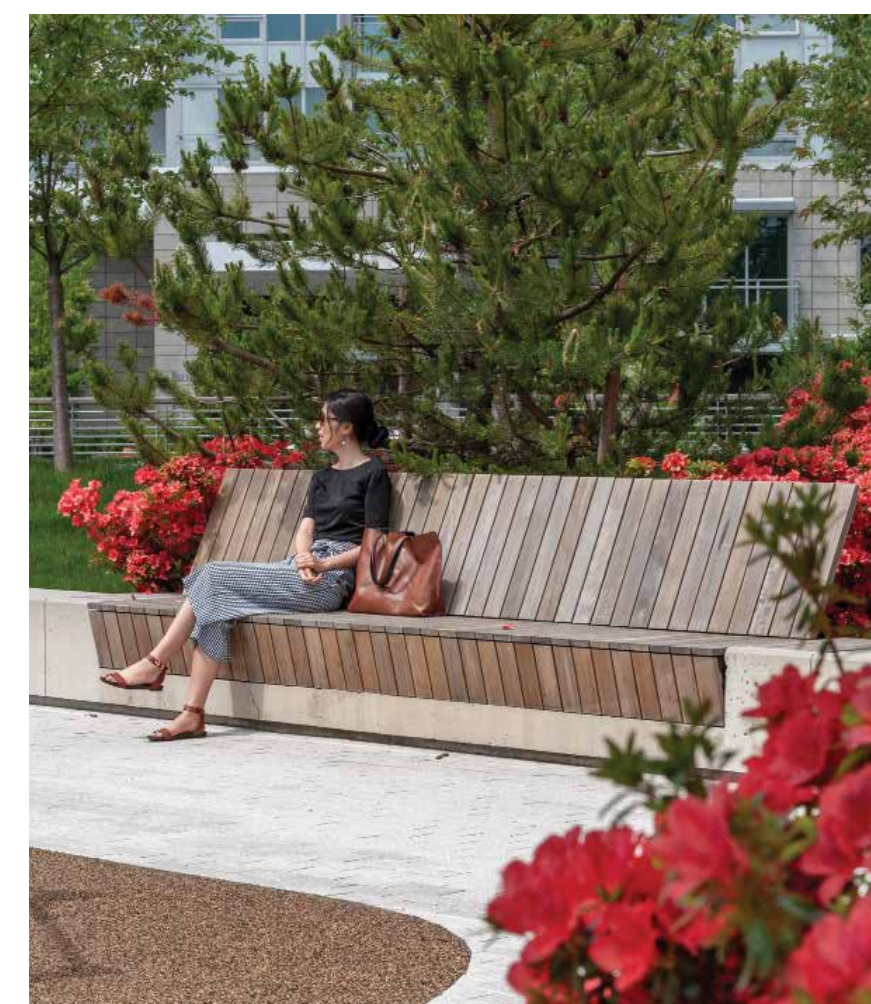


Stairs



Trees for Shade

Seating Types



Wall seating



Bench



Picnic table



Chairs