

A NEW PARK AT OAKRIDGE CENTRE

PHASE 2: CONSULTATION SUMMARY REPORT

TABLE OF CONTENTS

1. Introduction	1
1.1 Project Consultation Overview	1
1.2 Process	2
1.3 Consultation Snapshot	2
1.4 Methodology	3
2. Results	4
2.1 Vision	4
2.2 Guiding Principles	5
2.3 Ideas for Park Concept Design	7
2.4 Ideas for Park Concept Areas	8
2.5 Demographics	12
3. Questionnaire	13

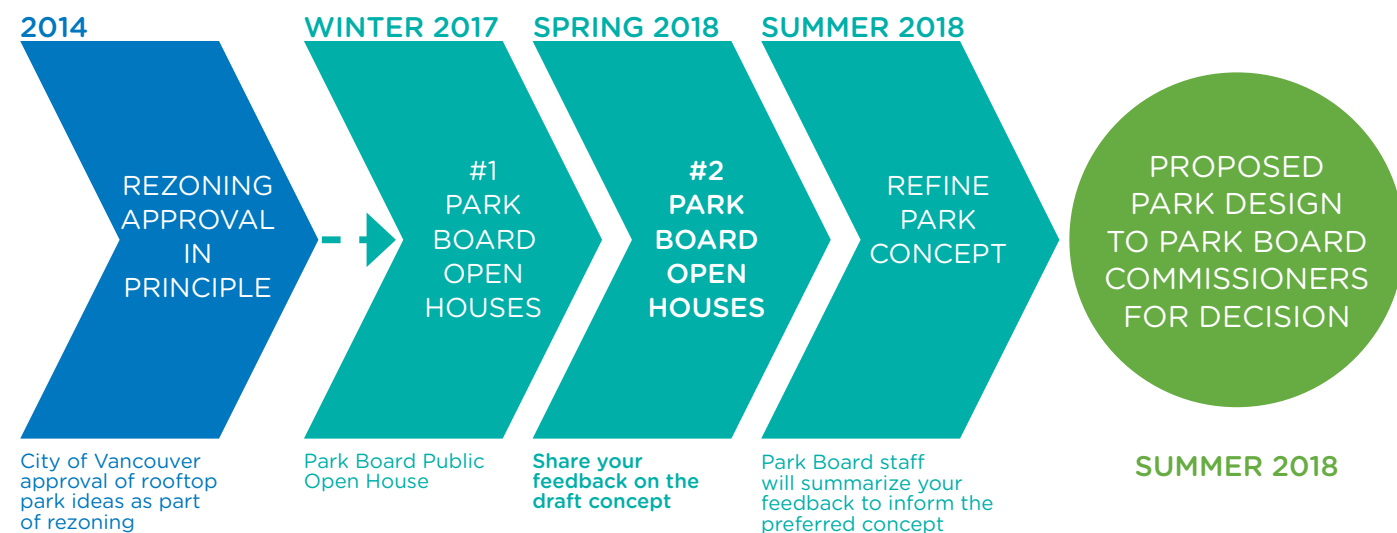
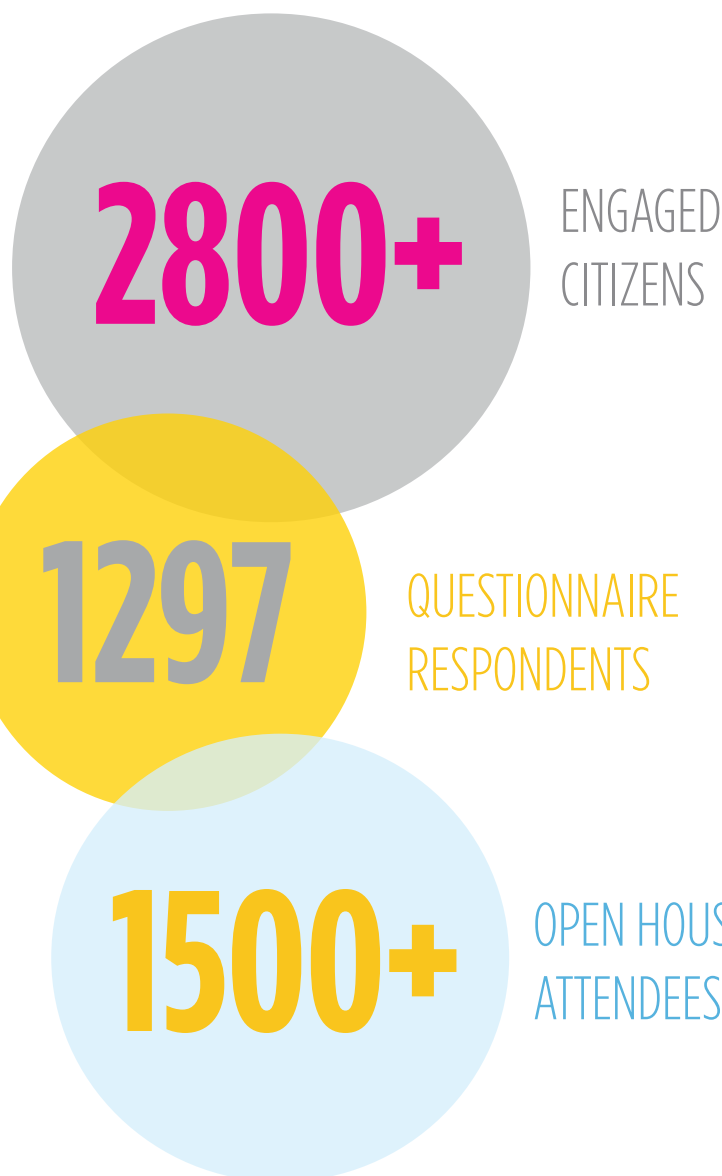
1. INTRODUCTION

1.1 PROJECT CONSULTATION OVERVIEW

This multi-phase process has involved public consultation to develop the vision, principles, and design for the new park as part of the redevelopment of Oakridge Centre. As of May 27, 2018, over 2800 participant interactions, not including social media, took place throughout the process.

In Fall 2017, the Vancouver Park Board began a planning process for the new park. Public consultation was a central component. Over two phases of public consultation, the Park Board held two open house event series (a total of four events) and sought feedback via two questionnaires hosted on Talk Vancouver, and available in English and traditional Chinese at the open house events. The process diagram below illustrates the multi-phase process.

A summary of the first round of public input is available at <http://vancouver.ca/parks-recreation-culture/new-park-at-oakridge-centre.aspx>. The following report summarizes participant input from the second phase of consultation.



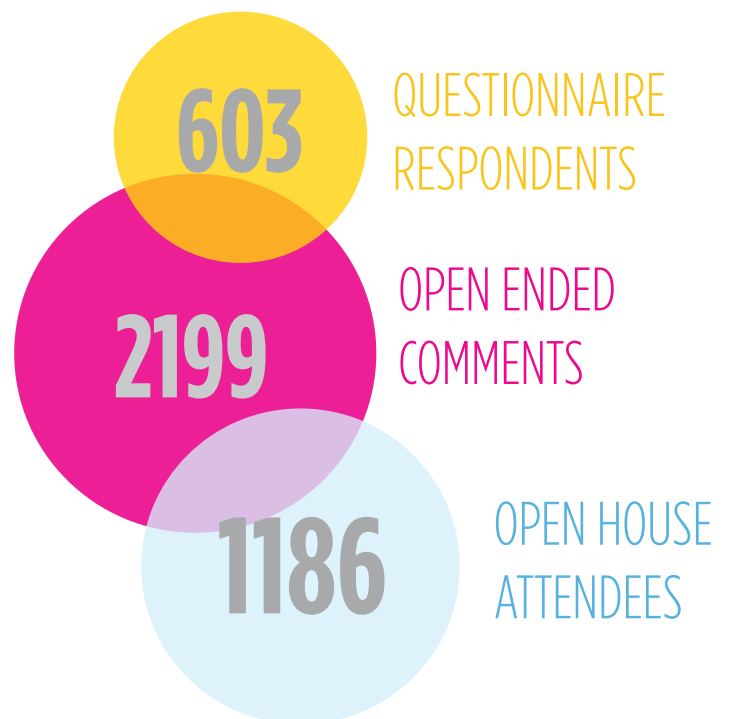
1. INTRODUCTION

1.2 PROCESS

In the second phase of consultation, the public had the opportunity to provide feedback on the draft park design concept at two open house events and through a questionnaire. The Park Board held open house events on May 10 and 12, 2018 at Oakridge Centre jointly with the City of Vancouver, who were consulting on an Oakridge Redevelopment Pre-Development Permit application. 1186 people participated in person during the two events and 603 people filled out the questionnaire either in person or online on Talk Vancouver between May 4, and May 27, 2018.

Phase 2 input provided further feedback and helped staff to gauge levels of public support for the vision, principles and draft concept. Feedback from both phases is incorporated in the report sections that follow.

1.3 PHASE 2 CONSULTATION SNAPSHOT



Phase 2 Open House

Image: PFS

1. INTRODUCTION

1.4 METHODOLOGY

The questionnaire included 19 questions including 10 open ended opportunities. The quantitative and qualitative data¹ were separately collated. This report combines both data sets and aims to summarize key takeaways related to the vision and principles, and draft park concept.



Phase 2 Open House

Image: PFS

¹ Definitions:

Quantitative Data- statistics resulting from the participants' measurable choices in the questionnaire

Qualitative Data- comments resulting from the open ended questions in the questionnaire

2. RESULTS

2.1 VISION

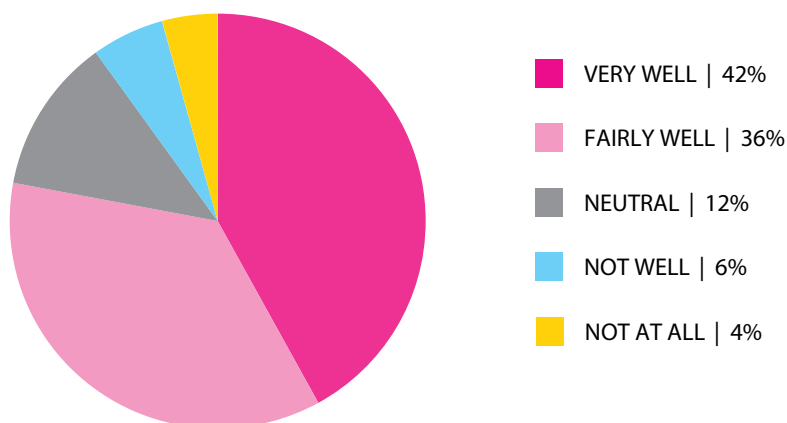
In the first phase of consultation, the public was asked to describe their ideal future for the new park. This feedback was used to help inform a draft vision for the park, which was presented for input during the second round of consultation:

“The new park at Oakridge Centre will provide a diverse and welcoming collection of park spaces balancing tranquil and active uses strongly connected by an unexpected rooftop Pacific-northwest landscape.

It will ensure vibrant interaction between the adjacent civic centre and the shopping mall uses to create a lively city-wide destination while also serving the daily park and recreation needs of nearby residents.”

“How well do you think this vision captures your overall ideas for the future park?”

The second phase of consultation questionnaire asked respondents, “How well do you think this vision captures your overall ideas for the future park?” The majority of the respondents (78%) responded that the draft vision aligns very well, or fairly well, with their ideas. An additional 12% felt neutrally about the draft park vision.



“Tell us why.”

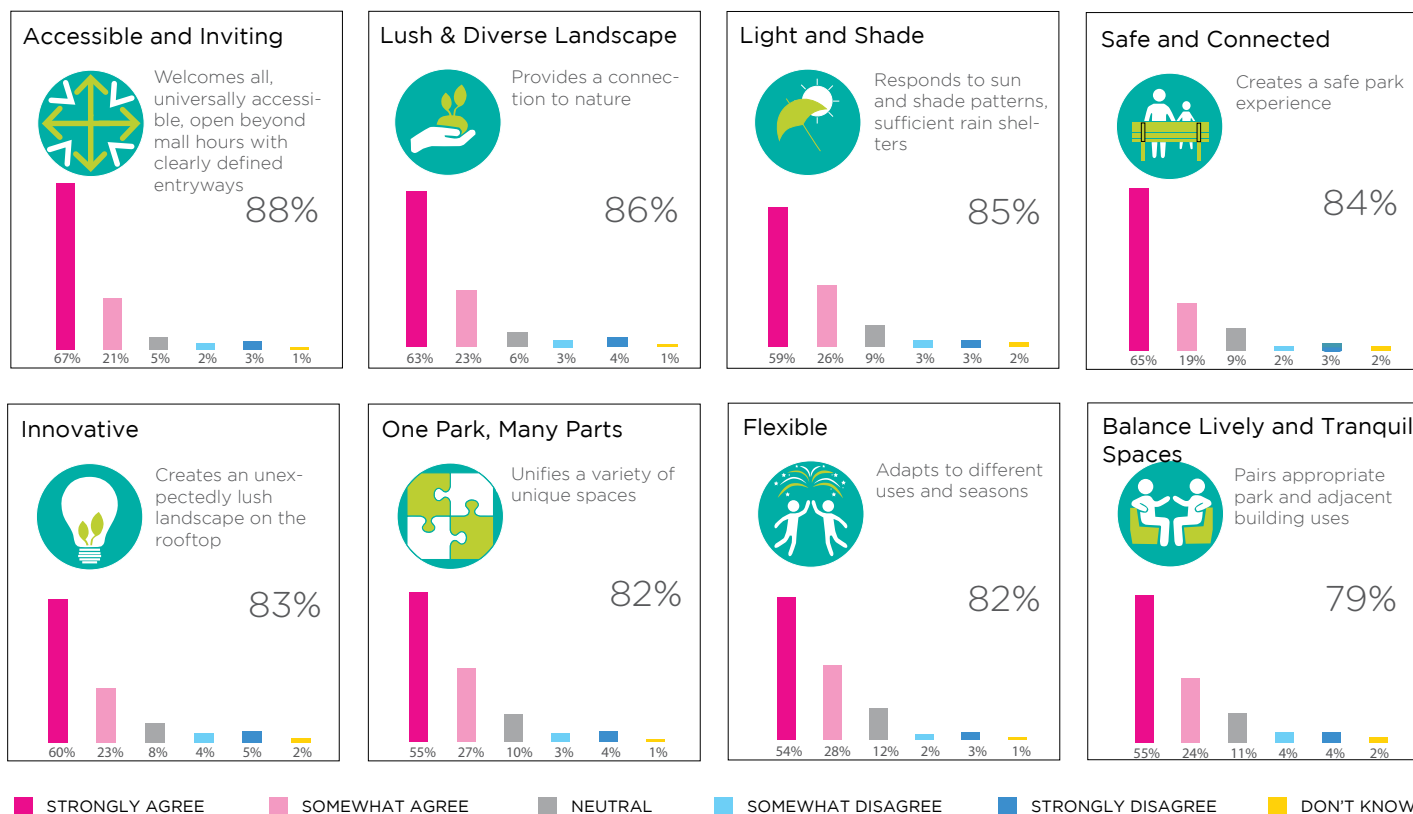
276 people contributed open-ended responses to the “Tell us why” portion of the question. Comments generally emphasized support of the park vision, particularly an appreciation of the multi-use function of the park (36 comments), how the park offers something for everyone (19 comments), and the natural elements incorporated into the design. Respondents also commented they wanted the park to provide a quiet place to relax (14 comments). Some were skeptical about the origin or need for the park (15 comments).

2. RESULTS

2.2 DRAFT PARK PRINCIPLES

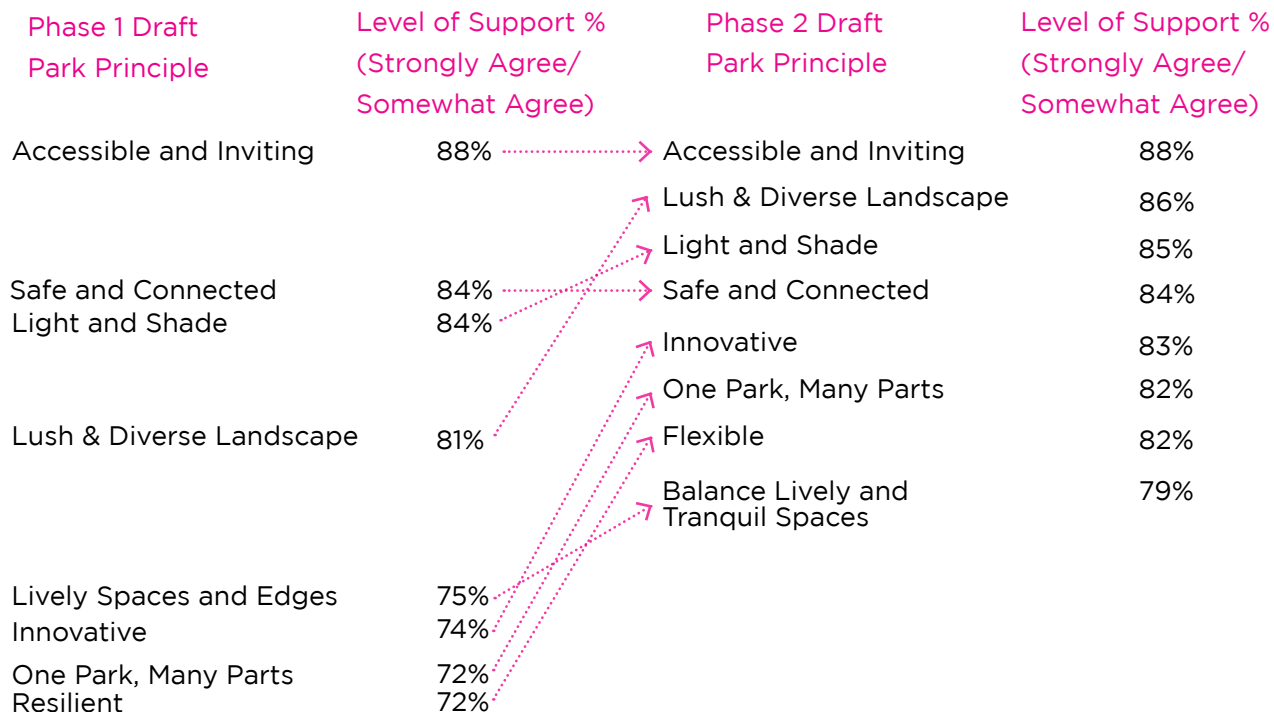
Eight draft park principles were presented to the public in the first phase of consultation. These were refined and in some cases renamed to reflect this input.

In phase 2, respondents were asked to indicate their level of support for the updated principles. The majority of participants supported the proposed principles. “Accessible and Inviting” received the strongest level of support (88%), followed by “Lush and Diverse Landscape” (86%), then “Light and Shade” (85%). “Balance Lively and Tranquil Spaces” All principles received at least 79% support and between 5% and 12% neutral.



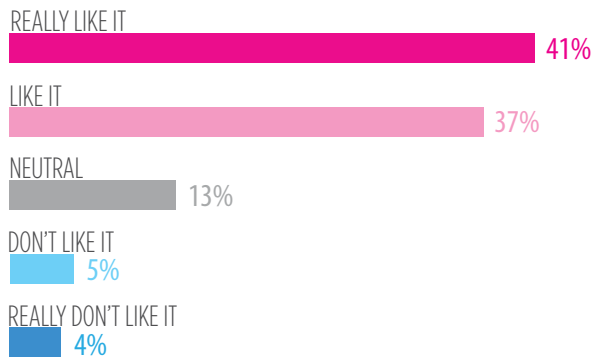
2.2 DRAFT PARK PRINCIPLES

Overall support for the draft park principles increased by 5%, from an average of 79% in phase 1 to 84% in phase 2. The following diagram indicates how the levels of support changed from phase 1 to phase 2.



2.3 DRAFT PARK CONCEPT DESIGN

The draft park concept has evolved throughout the planning process, and incorporates feedback from the first phase of consultation. Overall, there was strong support for the draft park concept design presented in phase 2. The majority of respondents (78%) indicated that they “really like” or “like” the draft park concept. 13% feel neutrally about the park design.



Comments concentrated on appreciation for the multi-use nature of the park (40 comments), and others expressed they like the green space and natural elements of the park (13 comments). Some felt the design was too busy and can't be everything to everyone (14 comments), while others like the inclusiveness and multi-functionality of the park (12 comments).

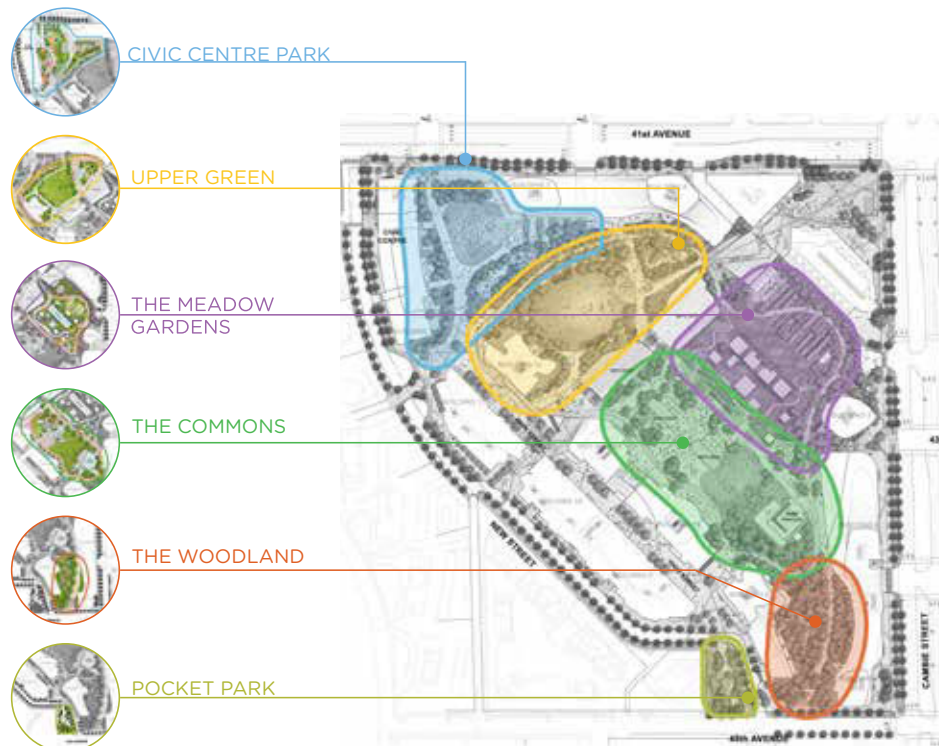
"I like the combination of different areas for different purposes and the interplay between functionality (buildings) and recreation (parks)."

"Combines so many different aspects of green space, with multiple functions for all different groups of people."

"My only concern is whether the park is trying to meet too many needs and whether the space is big enough to accommodate all the needs."

2.3 DRAFT PARK CONCEPT AREAS

The draft park concept includes 6 distinct park areas. Respondents were asked about each. The three most strongly supported park concept areas were the Meadow Gardens (82%), Woodland (81%), and Civic Centre Park (80%). The Pocket Park received the lowest amount of support with 70% of participants liking the design, followed by the Upper Green (75%), and the Commons (79%). The following illustration provides locations of the concept areas within the park. A summary of feedback received on each concept area follows.



Overall support for the concept areas increased by 4%, from an average of 74% in phase 1 to 78% in phase 2. Range in support for the concept areas shifted 54% to 85% (phase 1) to 70% to 85% (phase 2).

Phase 1 Concept Area	Level of Support % (Really Like It/ Like It)	Phase 2 Concept Area	Level of Support % (Really Like It/ Like It)
Woodland	85%	Meadow Gardens	82%
Meadow Gardens	81%	Woodland	81%
		Civic Centre	80%
		Commons	79%
Upper Green	77%	Upper Green	75%
		Pocket Park	70%
Pocket Park	68%		
Commons Ideas 1 and 2	61-67%		
Civic Centre Ideas 1 and 2	54-63%		

THE MEADOW GARDENS

The Meadow Gardens concept area received the highest support (82%). Respondents like the gardens (42 comments) and would like to see the area designed and managed as habitat for bees, birds and other pollinators (43 comments). A few comments related to concern that the area is aesthetically messy (13 comments) and shouldn't have gardens (12 comments), while others want the Meadow Gardens to be an informal area (11 comments).

"Excellent to include community garden plots and with opportunities to learn about gardening etc."
"I love many open spaces as close to wild/natural as possible."
"I have been disappointed with the appearance of community garden spaces. They become quite messy after a few years..."
"This will bring tranquility and relaxation to an urban environment. Great job!"



203
COMMENTS

309	REALLY LIKE IT 51%
184	LIKE IT 31%
66	NEUTRAL 11%
22	DON'T LIKE IT 4%
22	REALLY DON'T LIKE IT 4%

82% LIKE THE DESIGN

THE WOODLAND

The Woodland also received high support (81%) and the highest grouping of comments (51 comments). Many respondents expressed that the Woodland should be bigger (22 comments), or elements of the area, such as the use of native plants, expanded into other areas of the park. Others expressed a desire for the Woodland to act as a quiet place to relax, walk, sit, and find solitude (20 comments). Comments emphasized support for the natural feel of the area (12 comments) and the use of native plants (11 comments). Some are concerned about safety—particularly that the dark and lush areas also provide good hiding places (19 comments).

"Can it be bigger? With lots of people it will be crowded and won't serve its purpose of being tranquil."
"Make it bigger! I would love to see the woodland occupy a larger proportion of the park."
"Love the idea of incorporating a true west coast forest feel into this park, more of this concept please!"
"My only fear is that it will be too secluded...please have sufficient lights for night time illumination."



222
COMMENTS

312	REALLY LIKE IT 52%
175	LIKE IT 29%
63	NEUTRAL 10%
30	DON'T LIKE IT 5%
23	REALLY DON'T LIKE IT 4%

81% LIKE THE DESIGN

THE CIVIC CENTRE PARK

Support for the Civic Centre park design increased from 54%-63% in phase 1 to 80% in phase 2. Respondents like the multi-use function of the area (15 comments), and how the Civic Centre is inviting and well-connected to areas outside the park (12 comments). Others noted that there should be more space for play, more seating, sheltered and shaded areas, and more emphasis on a natural feel to the area. These comments were minimal in numbers.

"The connection with the public community centre is essential."

"It looks well designed for multiple uses and a good place for families."



188
COMMENTS

	231	REALLY LIKE IT 38%
	254	LIKE IT 42%
	72	NEUTRAL 12%
	24	DON'T LIKE IT 4%
	22	REALLY DON'T LIKE IT 4%

80% LIKE THE DESIGN

THE COMMONS

Support for the Commons increased from 61 - 67% in phase 1 to 79% in phase 2. Comments primarily reflected support for the vibrant, multi-use nature of the park (16 comments). Respondents expressed appreciation for this area as a community-hub that facilitates social interaction (12 comments) and hosts a variety of things to do for all ages, such as parents having the opportunity to enjoy food while watching their children play. There is some concern that there's too much going on in this area (12 comments), and concerns about this area attracting lots of people (8 comments). Some suggested the Commons could have more of a natural feel by adding more trees and having less concrete.

"Looks very inviting to a wide variety of people."

"Too much pavement, not enough trees."

"Great to have an outdoor eating area (some part of which should be licensed). Potentially fun family area where parents can lounge and children play."

"Looks like a space that's trying to serve too many interests all at once."

"Great to have a large common area for people to gather. I like the potential to use the space for social events, something fun and different for the area."



211
COMMENTS

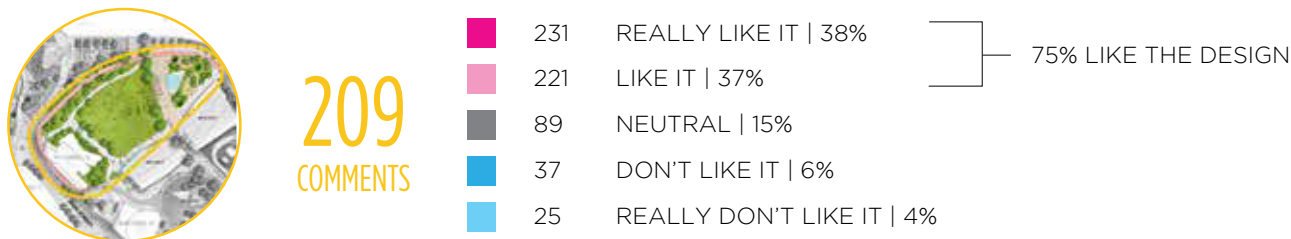
	254	REALLY LIKE IT 42%
	225	LIKE IT 37%
	63	NEUTRAL 10%
	32	DON'T LIKE IT 5%
	29	REALLY DON'T LIKE IT 5%

79% LIKE THE DESIGN

UPPER GREEN

The Upper Green remained consistently supported between phases of consultation (77% and 75%). The most commented-on topic was the off-leash dog area. Some respondents expressed support for a dog off-leash area (45 comments), others are not supportive of a space dedicated to dogs and their owners (25 comments). Some respondents expressed they like the openness of the Upper Green (10 comments), while others noted the area should have more trees (13 comments).

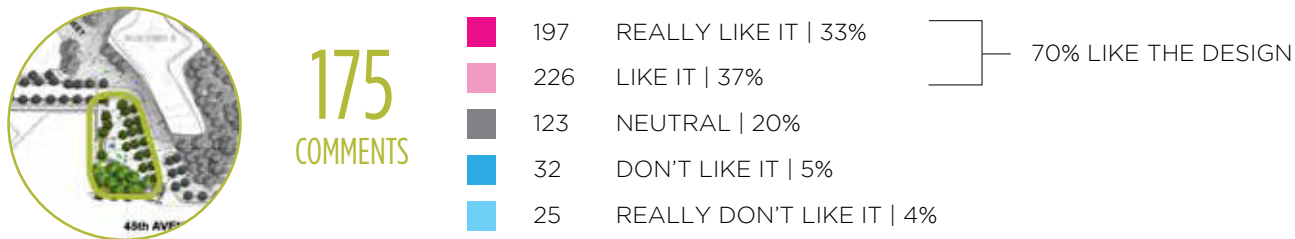
“The whole area seems open and safe & provides for a variety of activities.”
“More shaded and rain protected seating and eating space.”
“Not really a fan of off leash dog area nearby. Dog owners invariably let their dogs off leash outside the area and leave poop around.”
“I was concerned about the off-leash area but I like how it is off to the side surrounded by greenery that will help reduce the noise (barking, etc).”



POCKET PARK

Pocket Park remained consistently supported between phases of consultation at 68% and 70% with at least 20% responding neutrally. Respondents noted general support for the Pocket Park (14 comments), and concerns for safety—specifically having a children’s play space close to the street (28 comments). Others noted liking the design and the play space (9 comments), and think it should be bigger (10 comments). While some believe the area draws people into the rest of the park (7 comments) and is inviting (5 comments), others expressed that the area feels disconnected from the rest of the park and the design needs to facilitate better connection (8 comments).

“I like the seating around the playground - makes it easier to keep an eye on kids!”
“Looks as if the playground could be bigger. I’m sure it will be well used.”
“Not sure if a space for small children belongs by the busy street.”
“Good idea, creating purposeful flow.”
“It seems kind of disconnected from everything else especially if it’s on the other side of the new street.”



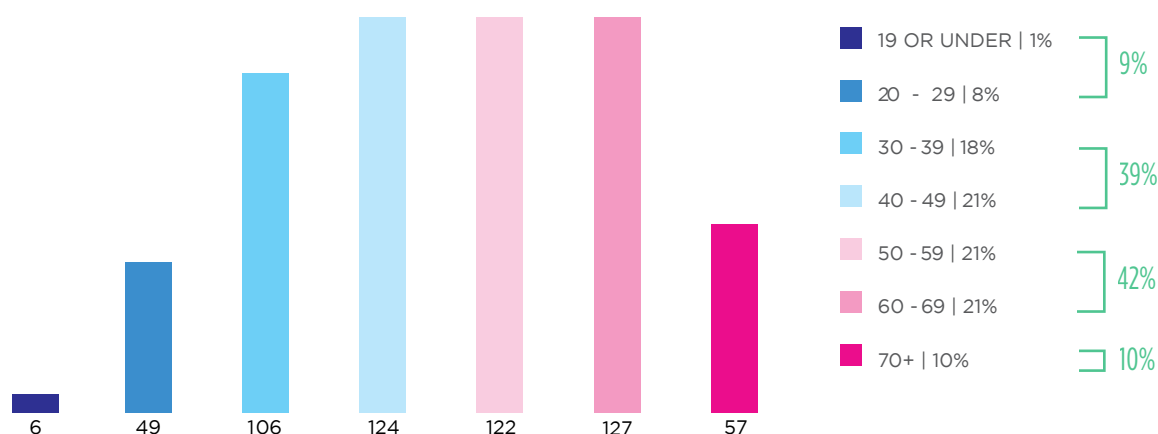
2.5 DEMOGRAPHICS

Participants were asked a few demographic questions to gain a sense of how representative they were of the broader community, and how they're connected to the park.

Respondents were varied in age, however, not all age groups had proportional representation. Only 9% of respondents were under the age of 29 and 10% over 70. The majority of respondents were between the ages of 30 and 69 years-old, and there was balanced representation between these age groups city-wide. By comparison, Talk Vancouver panel members' age profile consists of: 15% under 30, 52% between 30 and 49, 28% between 50 and 69, and 5% above 70. There is no substantial correlation between questionnaire results and age.

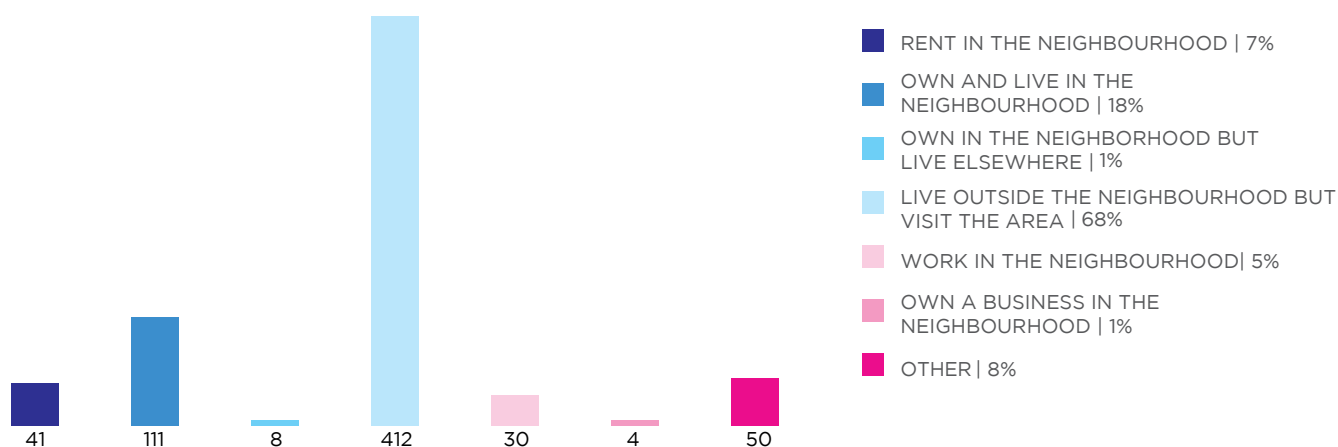
The graph below indicates the age of respondents, as well as how age groups compare between questionnaire respondents and TalkVancouver members. 83% of respondents heard about the questionnaire through TalkVancouver.

AGE GROUP



The majority of participants live in Vancouver (90%) with representation from across the city. The graph below shows us how respondents are connected to the park. The greatest proportion (68%) live outside the neighbourhood but visit the area.

CONNECTIONS TO THE PARK



3. QUESTIONNAIRE

New Park at Oakridge Centre – Draft Park Concept

The Vancouver Park Board is planning a new 9 acre park as part of the redevelopment of Oakridge Centre. The public park will be the first of its kind in Vancouver, located partially on the roof of the mall and partially at ground level. The new park will help meet the Vancouver Park Board's vision to connect people in Vancouver to nature, active living, and community.

In the fall of 2017 you shared your vision for the park and provided feedback on preliminary design ideas (A summary of what we heard in round 1 of engagement can be found online at vancouver.ca/oakridge-park.)

Now we have a draft concept we'd like you to review. Your feedback will be considered in the development of the preferred park concept that will be presented to the Vancouver Park Board for decision in summer 2018.

Please review the information boards from the May 2018 open houses at: vancouver.ca/oakridge-park.

Tell us what you think of the Draft Concept! Please help shape our future park.

The questionnaire is open until May 27, 2018 and is available at vancouver.ca/oakridge-park.

Park Vision

In our last round of engagement we asked the public about their vision for the new park, and this feedback was used to help craft a draft vision:

The new park at Oakridge Centre will provide a diverse and welcoming collection of park spaces balancing tranquil and active uses strongly connected by an unexpected rooftop Pacific-northwest landscape.

It will ensure vibrant interaction between the adjacent civic centre and the shopping mall uses to create a lively city-wide destination while also serving the daily park and recreation needs of nearby residents.

1. How well do you think this vision captures your overall ideas for the future park?

☐ Very well ☐ Fairly Well ☐ Neutral ☐ Not well ☐ Not at all ☐ Don't Know

Please tell us why:

Park Principles

In our last round of engagement we showed you eight guiding design principles that provide direction for the park design. We've updated these based on your feedback. More information on each principle is included on Information board #6a and is also available online at vancouver.ca/oakridge-park.

2. Do you agree or disagree with the updated park principles?

Principles	Strongly Agree	Somewhat Agree	Neutral	Somewhat Disagree	Strongly Disagree	Don't know
Accessible and Inviting <i>Welcomes all, universally accessible, open beyond mall hours with clearly defined entryways</i>						
Safe and Connected <i>Creates a safe park experience</i>						
A Lush and Diverse Landscape <i>Provides a connection to nature</i>						
Light and Shade <i>Responds to sun and shade patterns, sufficient rain shelters</i>						
Flexible <i>Adapts to different uses and seasons</i>						
Balance Lively & Tranquil Spaces <i>Pairs appropriate park and adjacent building uses</i>						
One Park, Many Parts <i>Unifies a variety of unique spaces</i>						
Innovative <i>Creates an unexpectedly lush landscape located on the rooftop</i>						

Please tell us why:

Draft Park Concept Design

The draft park concept has evolved throughout the planning process based on public feedback, technical and site conditions and Park Board policy. We have heard that *it is important to you* to create a lush landscape with strong connections to nature and a highly functional park that can accommodate a diversity of activities while balancing quiet areas for rest, relaxation and a variety of seating. Did we get it right? More detailed questions on the design follow in subsequent questions.

3. What do you think about the draft concept design? Please review with board #10.

☐ really like it ☐ like it ☐ neutral ☐ don't like it ☐ really don't like it

Please tell us why:

Park Areas

The park is divided into six areas each with a unique identity and a diversity of design elements and activities that were informed by your feedback. The areas are defined in information boards #11-#17 and at vancouver.ca/oakridge-park.

The Civic Centre Park

The Civic Centre Park is at street level and provides an introduction to the larger park on the roof. It is easily accessed from 41st avenue and the civic centre, allowing community centre activities to spill outside and animate the park. It includes a large playground, flexible lawn and covered pavilion for daily and small event use.

4. Overall, what do you think about the design for this park area? Please review with board #12a and b.

☐ really like it ☐ like it ☐ neutral ☐ don't like it ☐ really don't like it

Please explain:

The Upper Green

The Upper Green is designed to be a large open lawn space with a lush treed backdrop, located on the upper level of the park. A fenced off-leash dog area is located nearby.

5. Overall, what do you think about the design for this park area? Please review with board #13.

☐ really like it ☐ like it ☐ neutral ☐ don't like it ☐ really don't like it

Please explain:

The Commons

The Commons is designed to provide a hub of activity next to restaurants, retail stores and outdoor dining patios. It is designed to encourage use throughout the day and evening, during all seasons and includes a large open lawn area with covered pavilion for daily and event use, trees and landscaped areas for shade and seating. The plaza area has multi-purpose flexible space for events or exhibitions and an interactive water feature, workout, play and games areas.

6. Overall, what do you think about the design for this park area? Please review with board #14a and b.

☐ really like it ☐ like it ☐ neutral ☐ don't like it ☐ really don't like it

Please explain:

The Meadow Gardens

The Meadow Gardens is a lush wildflower and grass landscape for strolling and bird watching and will provide food and homes for birds and other pollinators. An adjacent community learning garden and support space would provide opportunities to work together to grow, share and learn about a wide variety of fruits and vegetables, beekeeping and other gardening pursuits.

7. Overall, what do you think about the design for this park area? Please review with board #15a and b.

☐ really like it ☐ like it ☐ neutral ☐ don't like it ☐ really don't like it

Please explain:

The Woodland

The Woodland is envisioned as a lush urban forest with boardwalks and attractive seating areas. A diversity of understory plants, showcasing a diversity of Pacific Northwest native flora, will create a green, restorative experience in contrast to some of the more active spaces in the park.

8. Overall, what do you think about the design for this park area? Please review with board #16 a and b.

☐ really like it ☐ like it ☐ neutral ☐ don't like it ☐ really don't like it

Please explain:

The Pocket Park

The Pocket Park is designed to provide a neighbourhood park at street level as well as lead people to the entrance to the larger rooftop park. The park will bring people together for a mix of active play and opportunities for social activities.

9. Overall, what do you think about the design for this park area? Please review with board #17.

☐ really like it ☐ like it ☐ neutral ☐ don't like it ☐ really don't like it

Please explain:

10. Do you have any additional comments you would like to share?

Demographics

It is important to us that we hear from a diversity of people and perspectives. The following questions help us to determine how the feedback we receive represents the community. Please note that individual responses are treated as anonymous.

11. Please provide your home postal code: _____

12. What is your connection to the park site? (Select all that apply)

- ☐ Rent in the neighbourhood
- ☐ Own and live in the neighbourhood
- ☐ Own in the neighbourhood but live elsewhere
- ☐ Live outside the neighbourhood but visit the area
- ☐ Work in the neighbourhood
- ☐ Own a business in the neighbourhood
- ☐ Other, please specify _____

13. What age group do you fall into?

- | | |
|--------------------------------------|--------------------------------------|
| <input type="checkbox"/> 19 or under | <input type="checkbox"/> 50-59 |
| <input type="checkbox"/> 20-29 | <input type="checkbox"/> 60-69 |
| <input type="checkbox"/> 30-39 | <input type="checkbox"/> 70-79 |
| <input type="checkbox"/> 40-49 | <input type="checkbox"/> 80 or older |

14. Do you have children under the age of 18 living in your household?

- ☐ Yes
- ☐ No

15. Do you identify as:

- ☐ Female
- ☐ Male
- ☐ Transgender
- ☐ None of the above. I identify as: _____
- ☐ Prefer not to say

16. What language do you speak most often at home?

- ☐ English
- ☐ French
- ☐ Cantonese
- ☐ Farsi
- ☐ German
- ☐ Hindi
- ☐ Italian
- ☐ Japanese
- ☐ Korean
- ☐ Mandarin
- ☐ Punjabi
- ☐ Spanish
- ☐ Tagalog
- ☐ Vietnamese
- ☐ Other (please specify)

17. How did you hear about this consultation?

- ☐ Direct mail / Notification card
- ☐ Newspaper ad
- ☐ Vancouver.ca
- ☐ Media article
- ☐ Facebook
- ☐ Twitter
- ☐ Email / List serve
- ☐ Friend (word of mouth)
- ☐ Other (please specify): _____

ENGAGEMENT EXPERIENCE

18. Please indicate how much you agree or disagree with the following statements:

	Strongly agree	Somewhat Agree	Neutral	Somewhat Disagree	Strongly Disagree
The content presented was clear and understandable					
I understood how my input would be used					
I felt that my input would make a difference					
I felt that participating was a valuable experience for me					

I had the opportunity to share my views					
I felt learned something new					

19. Have you participated in any consultation events for the new park at Oakridge Centre before today? (check all that apply)

- ☐ Yes I attended the open house in December
- ☐ Yes I provided input through a previous questionnaire
- ☐ No I haven't participated before

Thank you!

What's next?

Your feedback will help us revise the draft concept before it is presented to the Vancouver Park Board for their decision later this summer.

Do you know someone else who might be interested in sharing their views? Please direct them to:
vancouver.ca/oakridge-park

This questionnaire will be open until May 27, 2018.