

# Built Form: Residential 1

*Broadway and Commercial: Options for a high-density transit-oriented community*

## Low-Rise Residential

### 1.5 - 3 Storey - Townhouses



Townhouse example



Townhouse example, Vancouver



Hamlin Mews, Vancouver

### 4 Storey - Stacked Townhouses



Stacked townhouse example



Stacked townhouse example



Stacked townhouse - Regent Park, Toronto



# Built Form: Residential 2

*Broadway and Commercial: Options for a high-density transit-oriented community*

## Mid-Rise Residential

### Up to 4 Storey - Residential



Apartment Example, Vancouver



Olympic Village, Vancouver



Boston Cambridge Loft

### Up to 6 Storey - Residential



Apartment example



Pearl District, Portland



Olympic Village, Vancouver



Apartment Example

### Up to 8 Storey - Residential



Apartment Example



Apartment Example



Apartment Example



# Built Form: Residential 3

*Broadway and Commercial: Options for a high-density transit-oriented community*

## Mid-Rise/Tower Residential

### Up to 12 Storey - Residential



Apartment Example



Apartment Example



Apartment Example

### Up to 18 Storey - Residential



Apartment Example



Apartment Example



Apartment Example



Apartment Example



Apartment Example

### Up to 24 Storey - Residential



Kingsway and Knight, Vancouver



Apartment Example



Apartment Example



Collingwood Village at Joyce Skytrain Station



# Built Form: Mixed-Use

*Broadway and Commercial: Options for a high-density transit-oriented community*

## Up to 4 Storey - Mixed-Use



Arbutus St., Vancouver



Capers, Vancouver



Mixed-Use Building Example

## Up to 6 Storey - Mixed-Use



Mixed-Use Building Example



East Pender, Vancouver



East 8th, Vancouver

## Up to 8 Storey - Mixed-Use



East 7th, Vancouver



Mixed-Use Building Example



Mixed-Use Building Example



Mixed-Use Building Example

## Up to 12 Storey - Mixed-Use



Mixed-Use Building Example



Mixed-Use Building Example



Mixed-Use Building Example

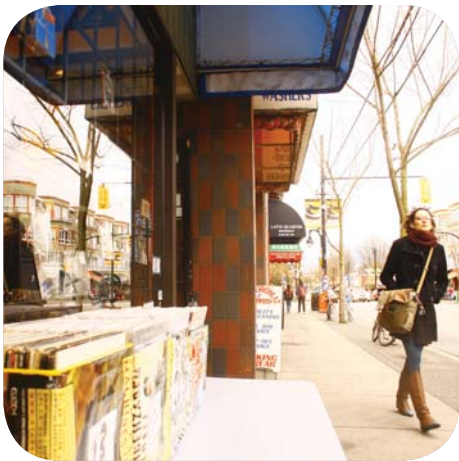


# Built Form: Commercial

*Broadway and Commercial: Options for a high-density transit-oriented community*



Patio space



Retail at grade



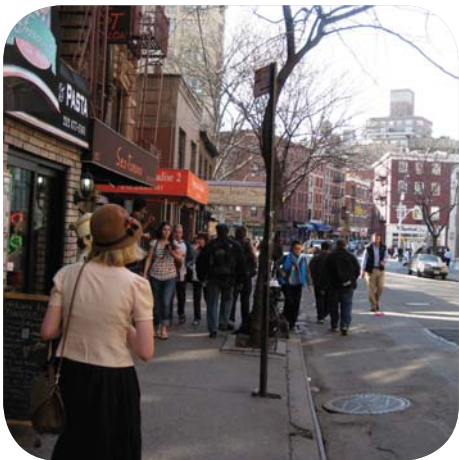
Retail at grade



Retail at grade



Gathering space



Local serving businesses



Neighbourhood scale



Street level commercial



Variety of businesses



Medical services



Mid-rise office building



Medical offices - Ho Centre



Education and office space



Mixed-Use commercial and office space



# Parks and Open Spaces

*Broadway and Commercial: Options for a high-density transit-oriented community*

## Shared Streets



Street Edge Example



Shared Street Example - Linden Alley, San Francisco



Street Edge Example - Water Street.

## Public Space



Grandview Park

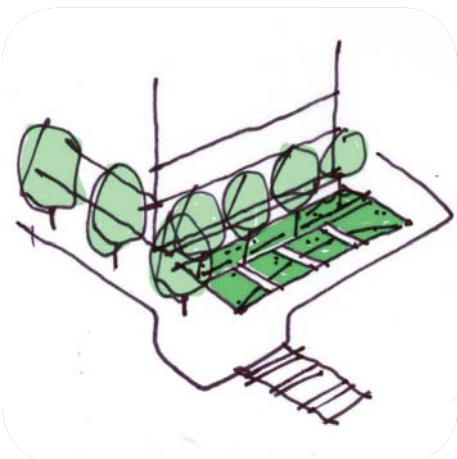


Buildings framing public space - Pearl District



Buildings framing public space - Pearl District

## Parklets



Sketch of Parklet



Parklet, San Francisco



Hot Tubs Parklet, Vancouver

## Public Art



Peek-a-Boo, 2013  
Nancy Chew and Jacquie Metz  
3615 Victoria Street



Monument for East Vancouver, 2010  
Ken Lum  
Clark Drive at Great Northern Way



Offsite: Temporary installation  
Large Painting and Caryatid Maquette in Studio at Night (sculpture version), 2012  
Damian Moppett