

5

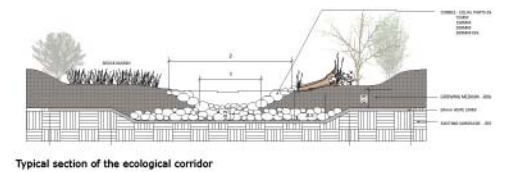
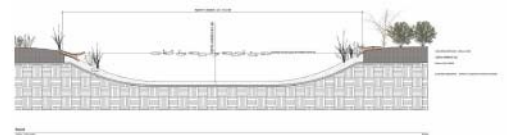
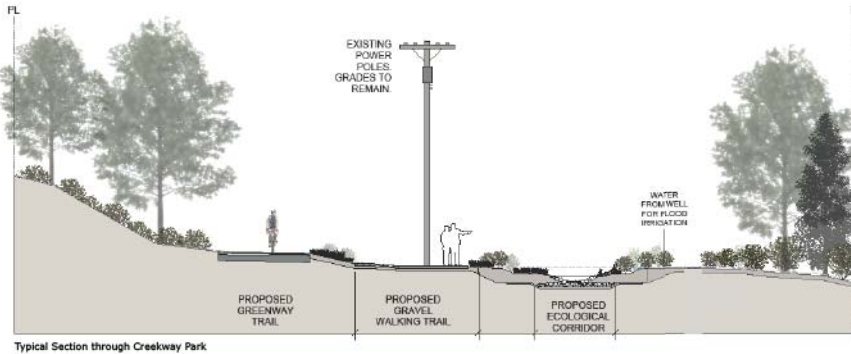
Ecology

How Creekway Park will contribute to the overall ecosystem

As part of the Hastings Park/PNE Master Plan (2010), the City made a commitment to pursue the development of a stream connection from the sanctuary to Burrard Inlet through Creekway Park.

What we Heard:

Public feedback has generally indicated that, although the creek will not allow for fish passage, it should be an ecologically significant corridor.



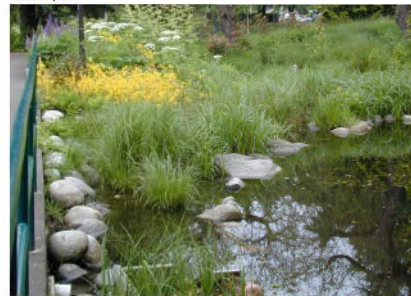
Storm flows in early fall and winter will fill the wetland channel and floodplains.



The wetlands will likely go dry in the summer, however, moist soils will sustain wetland plants



Stormwater will be captured and treated



The adjacent greenway trail allows users to witness how ecological communities change with the seasons



Plant communities will be chosen to create a biologically rich habitat



Interpretive signage will provide ecological information about the daylighted stream

Finalized Directions

The daylighted stream will be the home for many types of birds, amphibians and butterflies. Pending water supply, it will also house resident trout. In addition, it will capture and filter stormwater from the site and surrounding roads, thus reducing the load on the municipal storm sewers. Due to variable flow, impaired water quality, and fish passage barriers, Creekway Park will not support migrating salmon.

- Plant communities will be chosen to create a biologically rich habitat. They will also filter and clean stormwater as it passes through the channel.
- Like many natural wetlands and small streams, flow will dwindle to a trickle in August and September but moist soils will sustain wetland plants.
- Storm flows in early fall will fill the wetland channel and floodplains. Small weirs will be used to control water elevation.
- The greenway trail will cross the stream channel and provide a destination for park visitors and commuters to watch water flow and seasonal changes in the channel.