

PEOPLE PARKS & DOGS

A STRATEGY FOR SHARING
VANCOUVER'S PARKS

1

WELCOME!

WE WANT TO KNOW: HOW CAN PEOPLE AND DOGS BEST SHARE OUR PARKS?

The Vancouver Park Board is developing a comprehensive strategy to guide the planning and design of beautiful, safe and engaging parks for people with and without dogs.

The open house boards and discussion guide presented here give you information on park use by people with and without dogs, and include an overview of the city's existing off-leash areas. There is also a survey so you can share your opinions and ideas.

People, Parks & Dogs: A strategy for sharing Vancouver's parks

Round 1 – Public and Stakeholder Consultation September 8 – October 14, 2016

The consultation includes:

- Discussion guide
- Survey in hard copy and online at vancouver.ca/people-parks-dogs
- Open houses and small group meetings throughout the city

A second round of public and stakeholder consultation is anticipated for early 2017

How feedback will be considered

The planning team will consider feedback from this round of consultation, along with technical information, to develop recommendations for the planning, design and management of Vancouver's parks, beaches and dog off-leash areas for Park Board review and approval.

ABOUT PEOPLE, PARKS & DOGS: A STRATEGY FOR SHARING VANCOUVER'S PARKS

As in many other major North American cities, Vancouver's urban dog population is growing. With population growth and people living in smaller spaces, it's now more important than ever to balance different uses of parks and public spaces. That's why we're developing *People, Parks & Dogs*.

Planning Process Goals

The comprehensive *People, Parks & Dogs* strategy will:

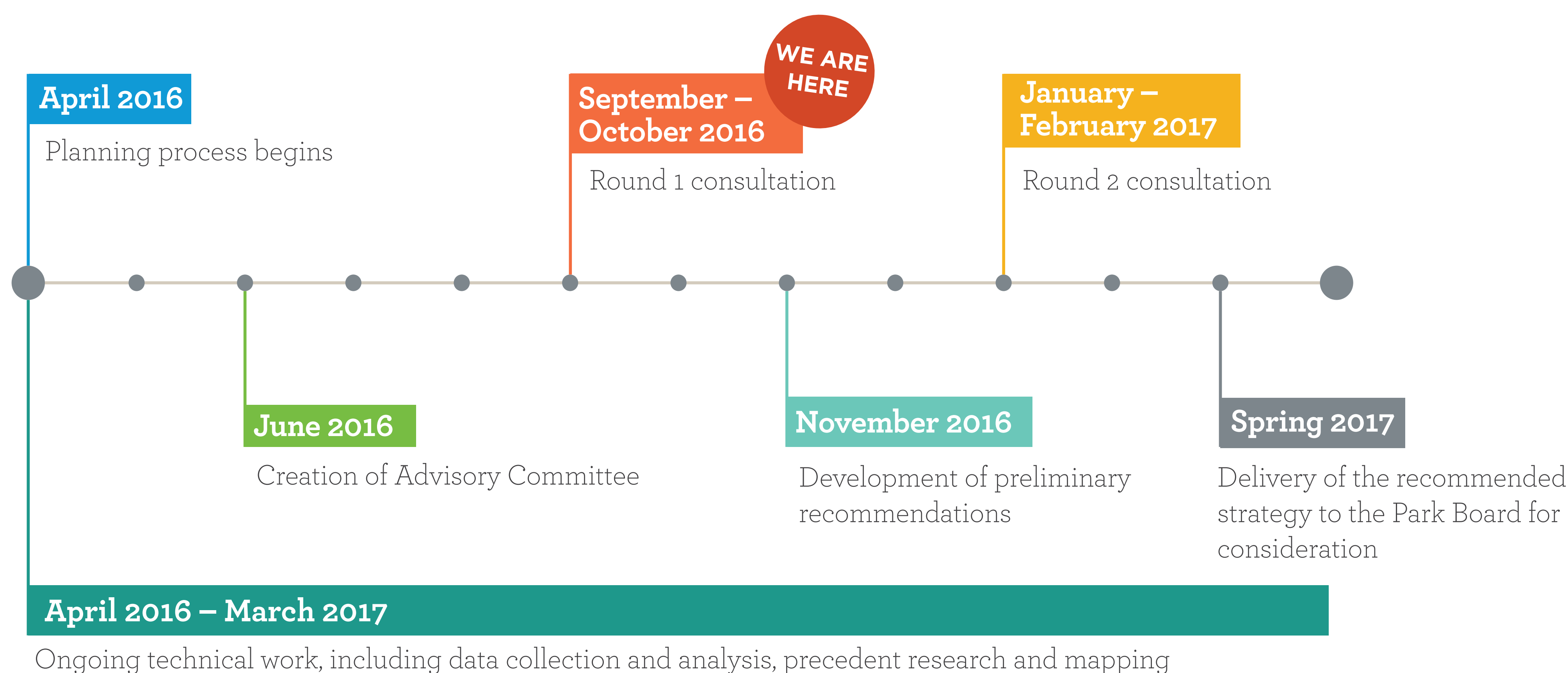
- Provide evidence-based policy recommendations;
- Draw on the expertise and experience of staff, stakeholders and the public;
- Lay the foundation for well-designed off-leash areas; and
- Assist the Park Board in helping parks throughout the city meet the needs of a broad range of park users.

Work to Date

- Studying Vancouver's existing off-leash areas to identify opportunities and challenges.
- Doing field surveys at eight off-leash parks.
- Studying dog parks in other cities.
- Conducting a workshop with staff to identify opportunities and challenges.

In 2017, the planning team will submit the recommended strategy to the Park Board for review and approval.

Anticipated Planning Process Timeline



PEOPLE PARKS & DOGS

A STRATEGY FOR SHARING
VANCOUVER'S PARKS

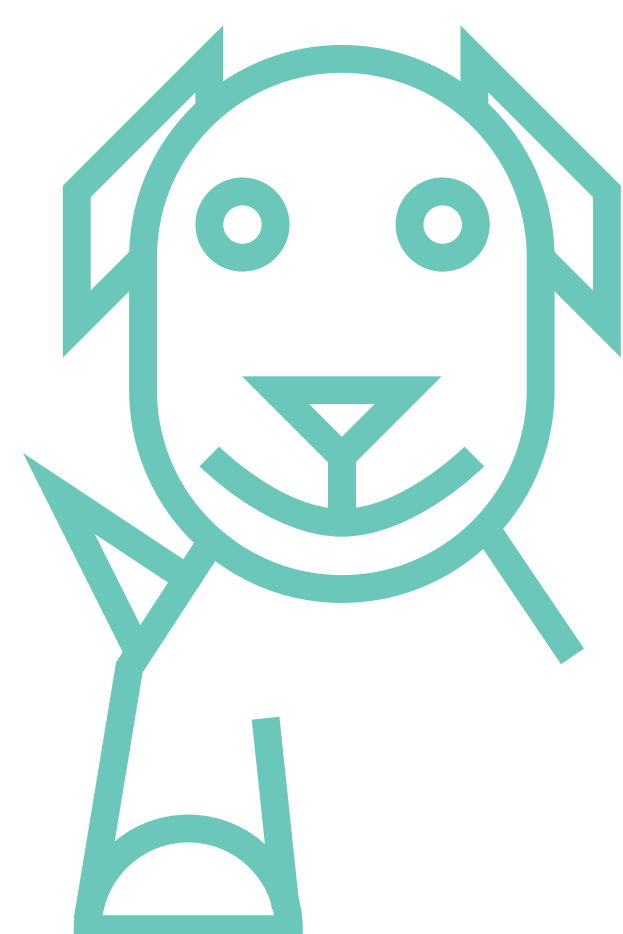
3

CONSULTING WITH YOU

The Park Board is committed to consulting with a diverse range of stakeholders, park users and the public about *People, Parks & Dogs: A strategy for sharing Vancouver's parks*.

During this round of consultation we want to hear from you about topics related to shared park use by people with and without dogs.

During the second round of consultation, we will ask for feedback on preliminary recommendations about the planning, design and management of Vancouver's parks, beaches and dog off-leash areas.



Find out all the ways you can participate on the next board!

People, Parks & Dogs Advisory Committee

In June 2016, the Park Board created an Advisory Committee for *People, Parks & Dogs* to provide focused feedback into the consultation process from a range of stakeholder perspectives.

The Advisory Committee is a valuable resource for information sharing between the Park Board and stakeholder groups. Members provided feedback on consultation topics and methods during pre-consultation.

The Advisory Committee will continue to meet regularly throughout the planning process.



#PEOPLEPARKSDOGS

Help us make Vancouver Parks
better for people and dogs.

VANCOUVER.CA/PEOPLE-PARKS-DOGS

PEOPLE PARKS & DOGS

A STRATEGY FOR SHARING
VANCOUVER'S PARKS

4

HOW TO PARTICIPATE

This first round of consultation will inform the development of *People, Parks & Dogs: A strategy for sharing Vancouver's parks*. We want to hear from you as we gather information about what is and is not working related to dogs in parks.

There will be further consultation opportunities in early 2017, when we'll be asking you for feedback on preliminary recommendations about the planning, design and management of Vancouver's parks, beaches and off-leash areas.

*Please submit your
feedback by October 14, 2016*

1 Discussion Guide and Survey

Online at vancouver.ca/people-parks-dogs

In person at an open house or small group meeting

2 Open Houses

Date	Time	Location*
Tues, Sept 13	6 pm – 9 pm	Trout Lake Community Centre
Sat, Sept 17	10 am – 1 pm	David Lam Park
Wed, Sept 21	6 pm – 9 pm	St. James Community Square
Sat, Oct 1	10 am – 1 pm	Langara Golf Course Clubhouse

Drop in to chat with the planning team and learn more about *People, Parks & Dogs*. You don't have to pre-register.

***Visit vancouver.ca/people-parks-dogs for details**

3 Small Group Meetings

Date	Time	Location*
Thurs, Sept 15	7 pm – 9 pm	Trout Lake Community Centre
Thurs, Sept 29	7 pm – 9 pm	Roundhouse Community Centre
Tues, Oct 4	7 pm – 9 pm	Sunset Community Centre
Thurs, Oct 6	7 pm – 9 pm	Kitsilano Community Centre

Join the planning team for an in-depth discussion about *People, Parks & Dogs*. To register, email people-parks-dogs@vancouver.ca or phone 604.257.8476 with your name and the date, time and location of the meeting you would like to attend.

***Visit vancouver.ca/people-parks-dogs for details**

4 Written Feedback

By email people-parks-dogs@vancouver.ca

By mail Attn: People, Parks & Dogs
Vancouver Board of Parks and Recreation
2099 Beach Avenue, Vancouver, BC V6G 1Z4

PEOPLE PARKS & DOGS

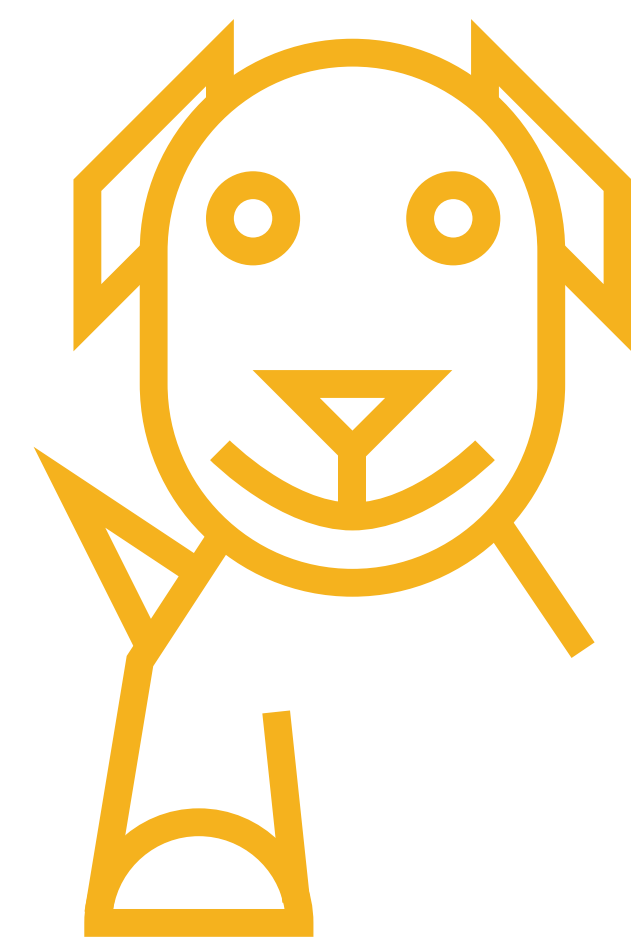
A STRATEGY FOR SHARING
VANCOUVER'S PARKS

5

WHY DO WE NEED A *PEOPLE, PARKS & DOGS* STRATEGY?

With Vancouver's growing population, our parks and other public spaces are shared by many different users. Our parks need to be well-planned, designed and managed to meet the needs of a broad range of park users, including both dog owners and non-dog owners. Considering and integrating the needs of different user groups into park planning makes sharing limited park spaces easier and reduces conflict.

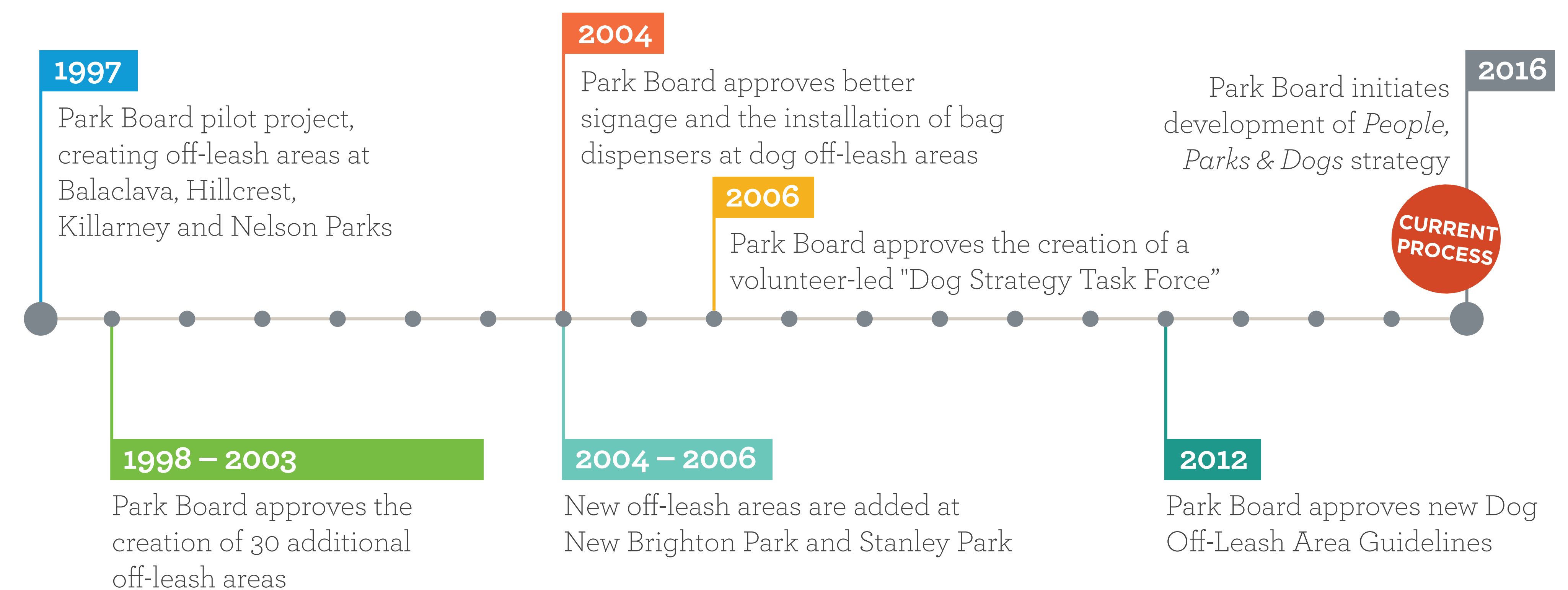
There are about
145,000*
dogs in Vancouver



About **15%** of
dogs in Vancouver
are licensed

*Estimate provided by City of Vancouver
Animal Services

History of Dog Parks in Vancouver

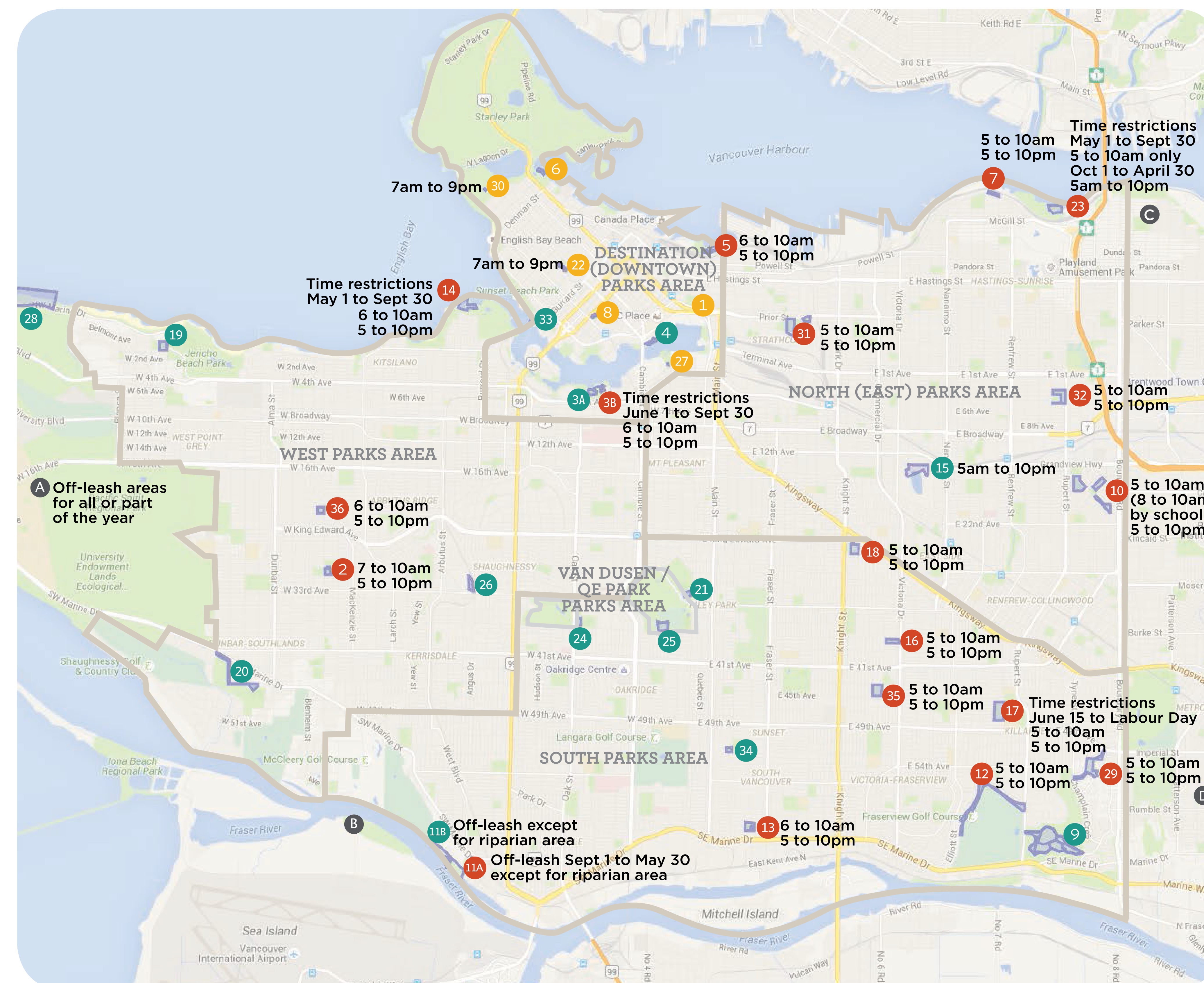


PEOPLE PARKS & DOGS

A STRATEGY FOR SHARING
VANCOUVER'S PARKS

6

Map of Vancouver's dog off-leash areas



In Vancouver, there are 36 off-leash areas. Six sites are fenced and are typically only used by dog owners and their dogs. The remaining 30 sites are unfenced and the park space is shared with other users.

Which ones do you use?

LEGEND:

- Unfenced and open all day*
- Unfenced with time / seasonal restrictions
- Fenced and open all day*

*Typical hours are 6 am to 10 pm unless noted otherwise

VANCOUVER PARK BOARD DOG OFF-LEASH AREAS:

- 1 Andy Livingstone Park
- 2 Balaclava Park
- 3A Charleston Park (west)
- 3B Charleston Park (east)
- 4 Coopers' Park
- 5 Crab Park at Portside
- 6 Devonian Harbour Park
- 7 Dusty Greenwell Park
- 8 Emery Barnes Park
- 9 Everett Crowley Park
- 10 Falaise Park
- 11A Fraser River Park (east)
- 11B Fraser River Park (west)

- 12 Fraserview Park
- 13 George Park
- 14 Hadden Park
- 15 John Hendry (Trout Lake)
- 16 Jones Park
- 17 Killarney Park
- 18 Kingscrest Park
- 19 Locarno Park
- 20 Musqueam Park
- 21 Nat Bailey Stadium
- 22 Nelson Park
- 23 New Brighton Park
- 24 Oak Meadows Park
- 25 Queen Elizabeth Park

- 26 Quilchena Park
- 27 Southeast False Creek
- 28 Spanish Banks
- 29 Sparwood Park
- 30 Stanley Park
- 31 Strathcona Park
- 32 Sunrise Park
- 33 Sunset Beach
- 34 Sunset Park
- 35 Tecumseh Park
- 36 Valdez Park

LOCAL OFF-LEASH AREAS OUTSIDE OF VANCOUVER PARK BOARD JURISDICTION:








- A Pacific Spirit Regional Park (Metro Vancouver)
- B Macdonald Beach off-leash area (City of Richmond)
- C Burnaby Heights Park (City of Burnaby)
- D David Gray Park (City of Burnaby)

WHAT ARE THE BENEFITS AND CHALLENGES OF OFF-LEASH AREAS?

Benefits of off-leash areas include:

-  Building community and connections
-  Providing places for dogs to exercise and socialize
-  Encouraging owners to keep off-leash activity to off-leash areas
-  Making parks and neighbourhoods safer
-  Discouraging conflict in shared park spaces
-  Promoting responsible dog ownership

Challenges of off-leash areas include:

-  Managing dog waste
-  Safety concerns (people and dogs)
-  Sharing limited park space
-  Managing noise
-  Increased maintenance and enforcement costs
-  Keeping off-leash activity to designated off-leash areas
-  Potential environmental impacts

Do you
have any
other ideas?

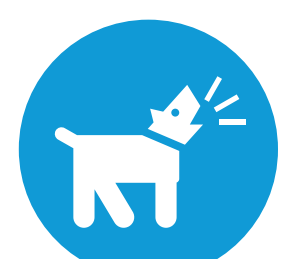
WHAT'S IMPORTANT WHEN IT COMES TO PEOPLE AND DOGS SHARING OUR PARKS?

What's
important
to you?



Safety for people:

Some people may be uncomfortable or scared around off-leash dogs.



Safety for dogs:

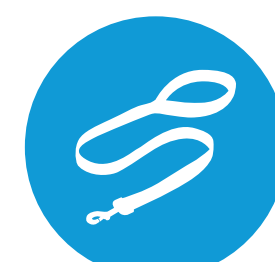
Dogs, including those who use off-leash areas, should also be safe and comfortable.



Waste management:

Good management of waste is necessary for the health and comfort of people and dogs who use parks.

The city of Vancouver is piloting a dog waste collection program in three city parks starting this summer. Find out more! vancouver.ca/home-property-development/dog-waste-collection.aspx



Bylaw education and enforcement:

Educating people about applicable bylaws and making sure they are followed.



Educating dog owners and dogs:

Education is important for promoting good etiquette for dogs and dog owners.



Environmental protection:

Reducing environmental impacts from dogs.



Location of dog activities within parks:

Good placement of off-leash areas in parks allows many different park users to enjoy parks at the same time.



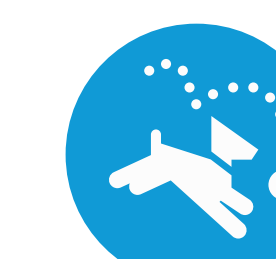
Location and distribution of off-leash areas within neighbourhoods:

Strategic location of off-leash areas throughout the city.



Noise:

Good placement of off-leash areas within parks and neighbourhoods helps to minimize noise problems for neighbours.



Design of off-leash areas, including boundaries:

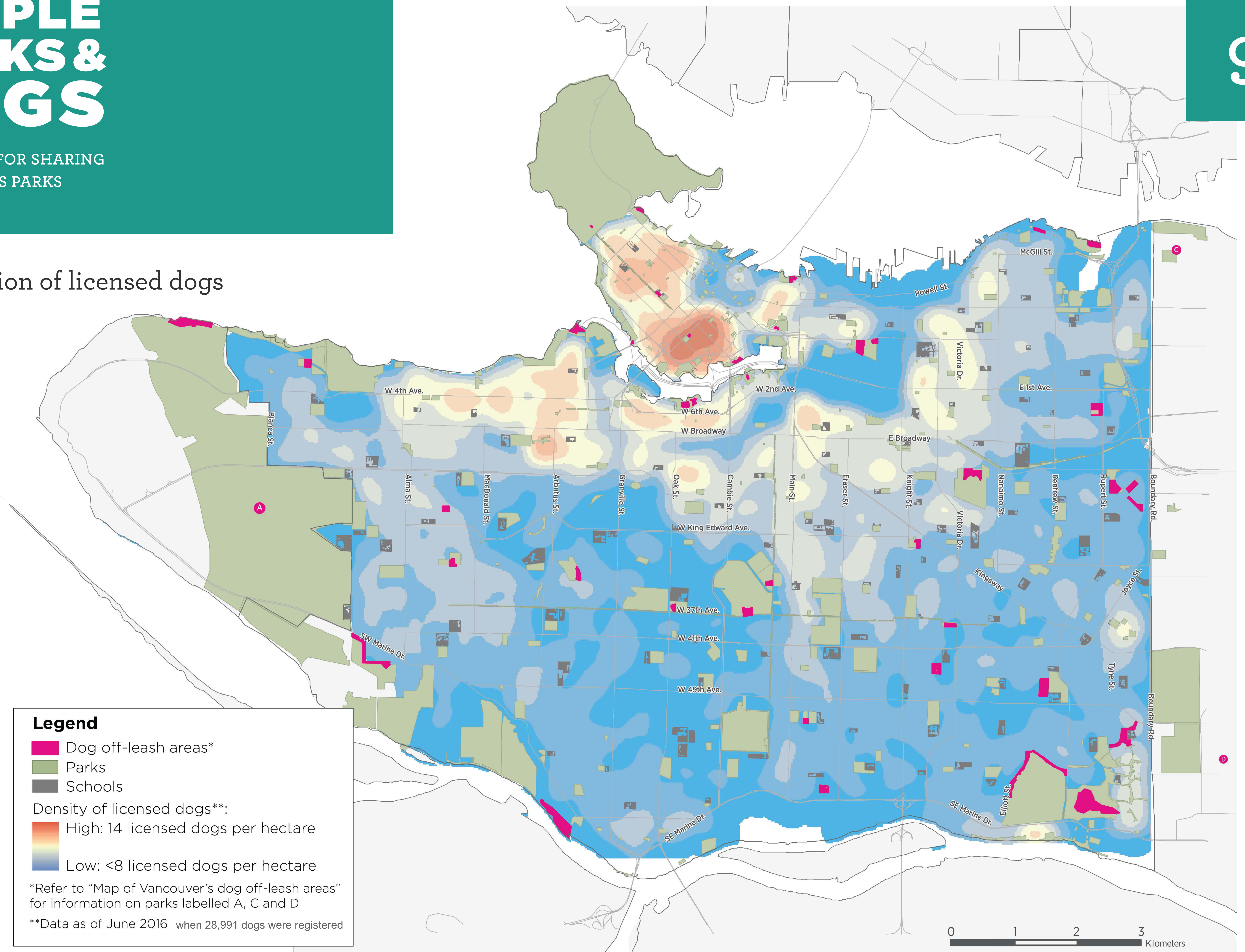
Meet the needs of people and dogs, and also reduce maintenance requirements and costs.



Partnership opportunities:

Exploring innovative partnership opportunities to help make dog facilities better and more sustainable in the long-term.

Distribution of licensed dogs

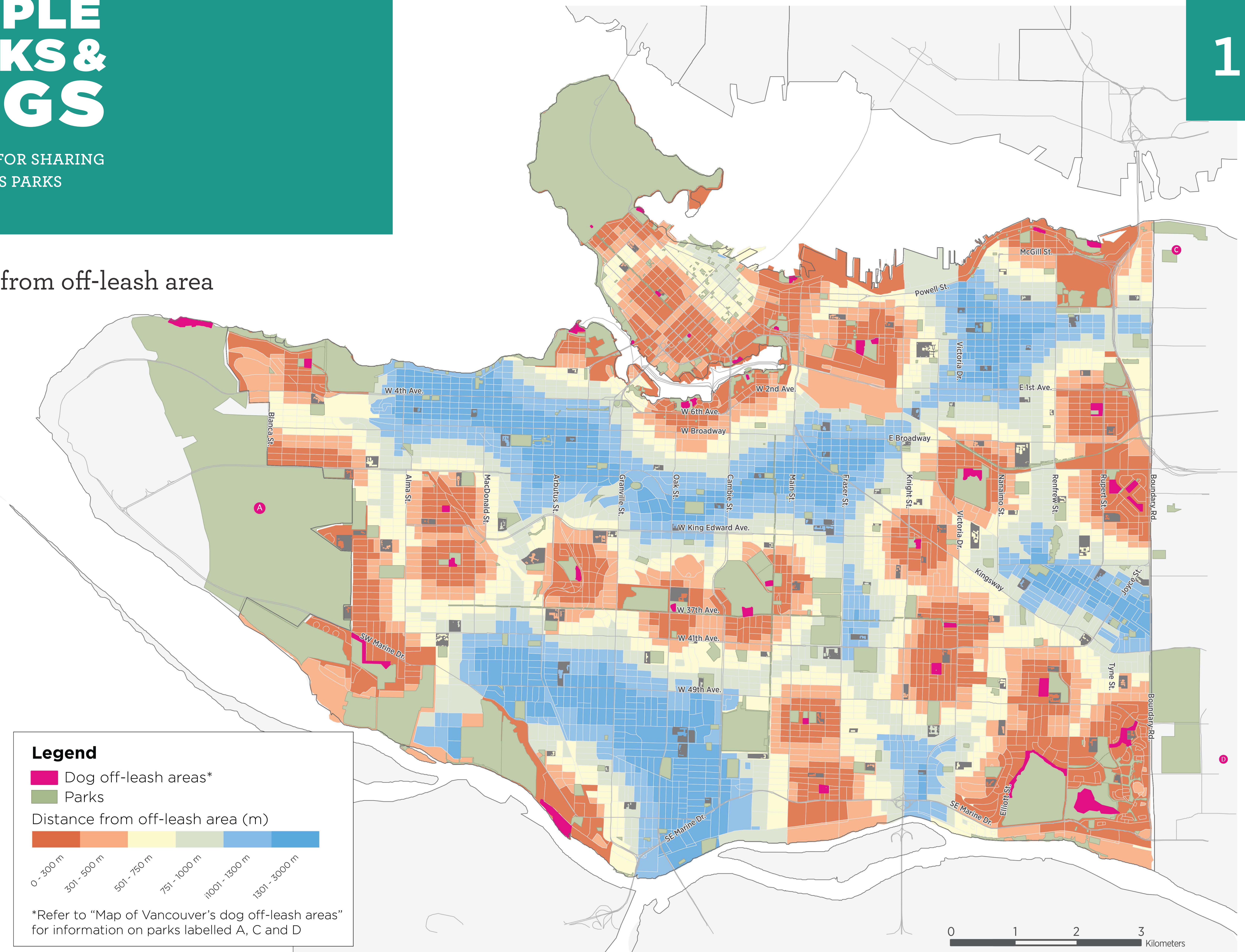


PEOPLE PARKS & DOGS

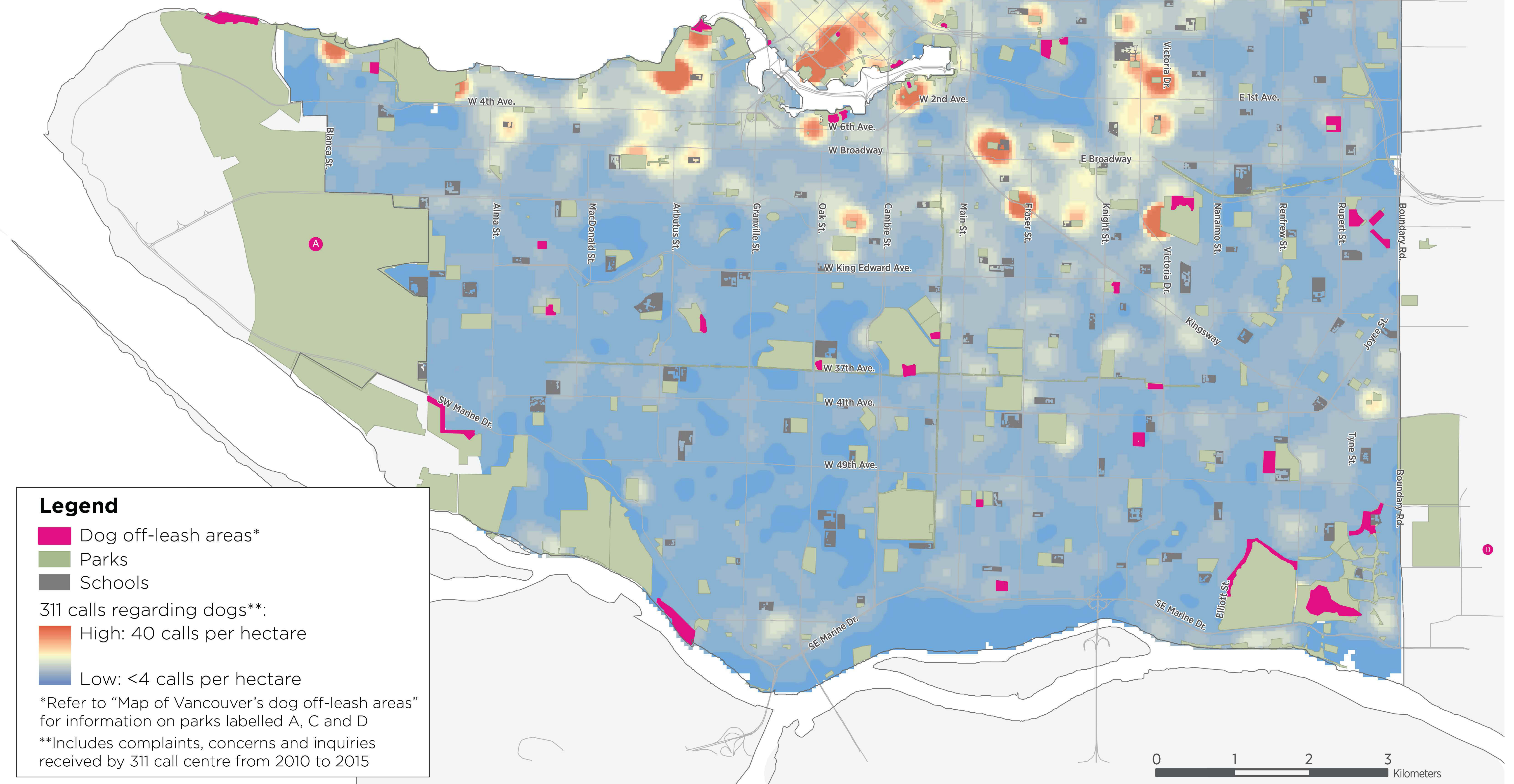
A STRATEGY FOR SHARING
VANCOUVER'S PARKS

10

Distance from off-leash area



Distribution of 311 calls regarding dogs

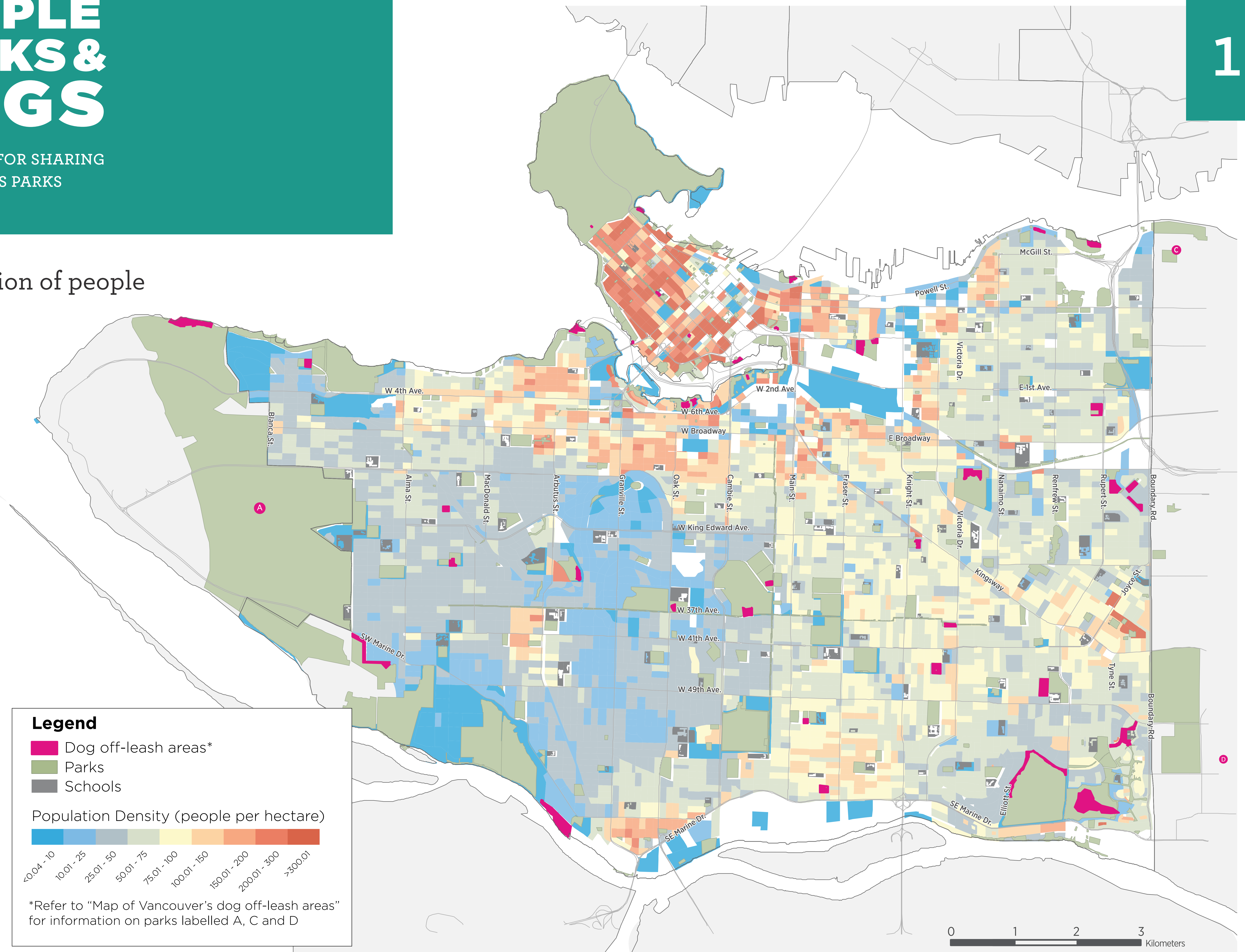


PEOPLE PARKS & DOGS

A STRATEGY FOR SHARING
VANCOUVER'S PARKS

12

Distribution of people

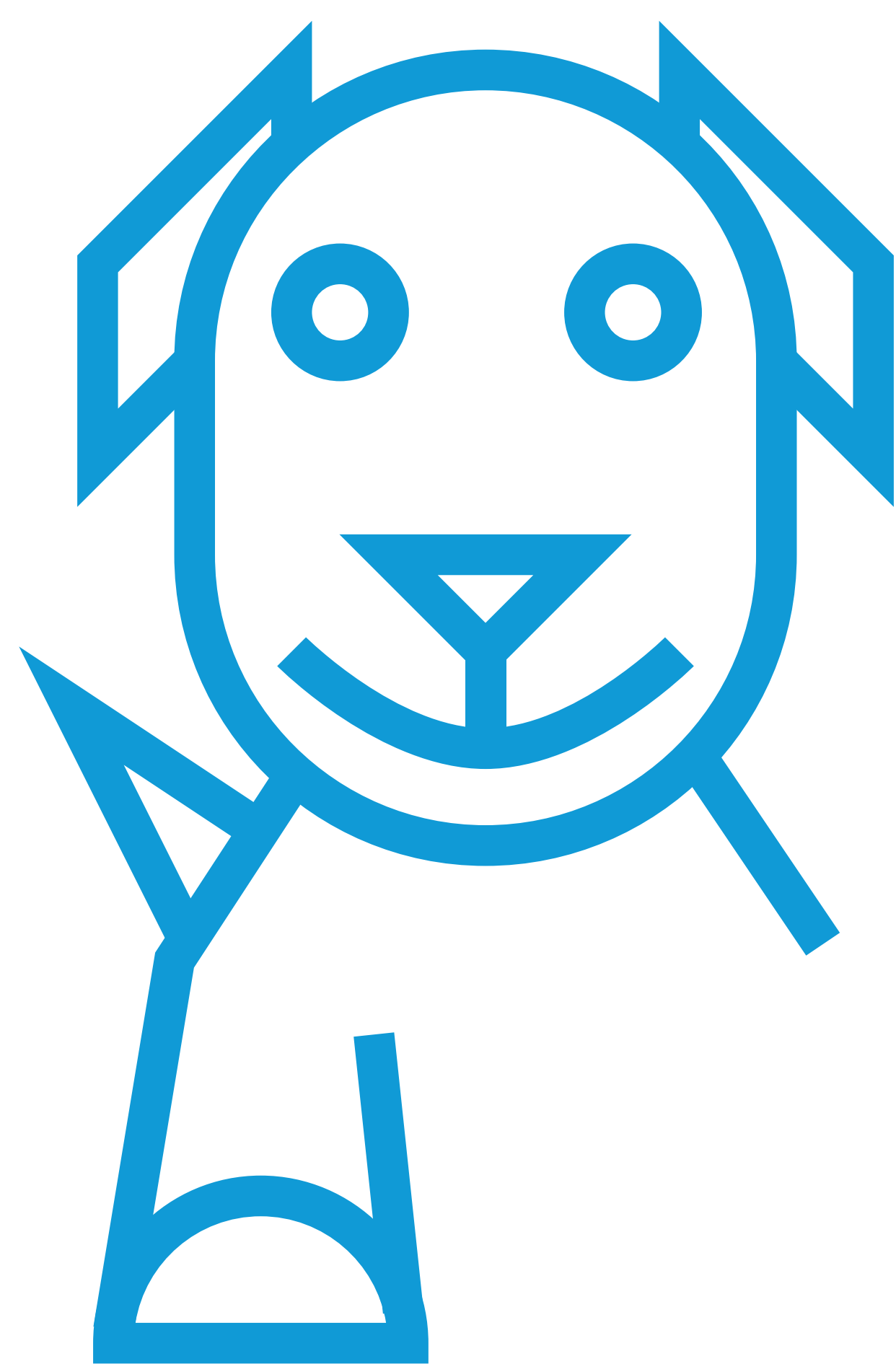


PEOPLE PARKS & DOGS

A STRATEGY FOR SHARING
VANCOUVER'S PARKS

13

Fill in our
survey!



Fill in the survey to tell us what's important to you about dogs in Vancouver parks, including opportunities and challenges for the city's off-leash areas, and outside of off-leash areas.

*Please submit your feedback by
October 14, 2016.*

Your feedback will help inform the recommendations for planning, designing and managing Vancouver's parks, beaches and dog off-leash areas.

The survey is available in hard copy and online at vancouver.ca/people-parks-dogs.