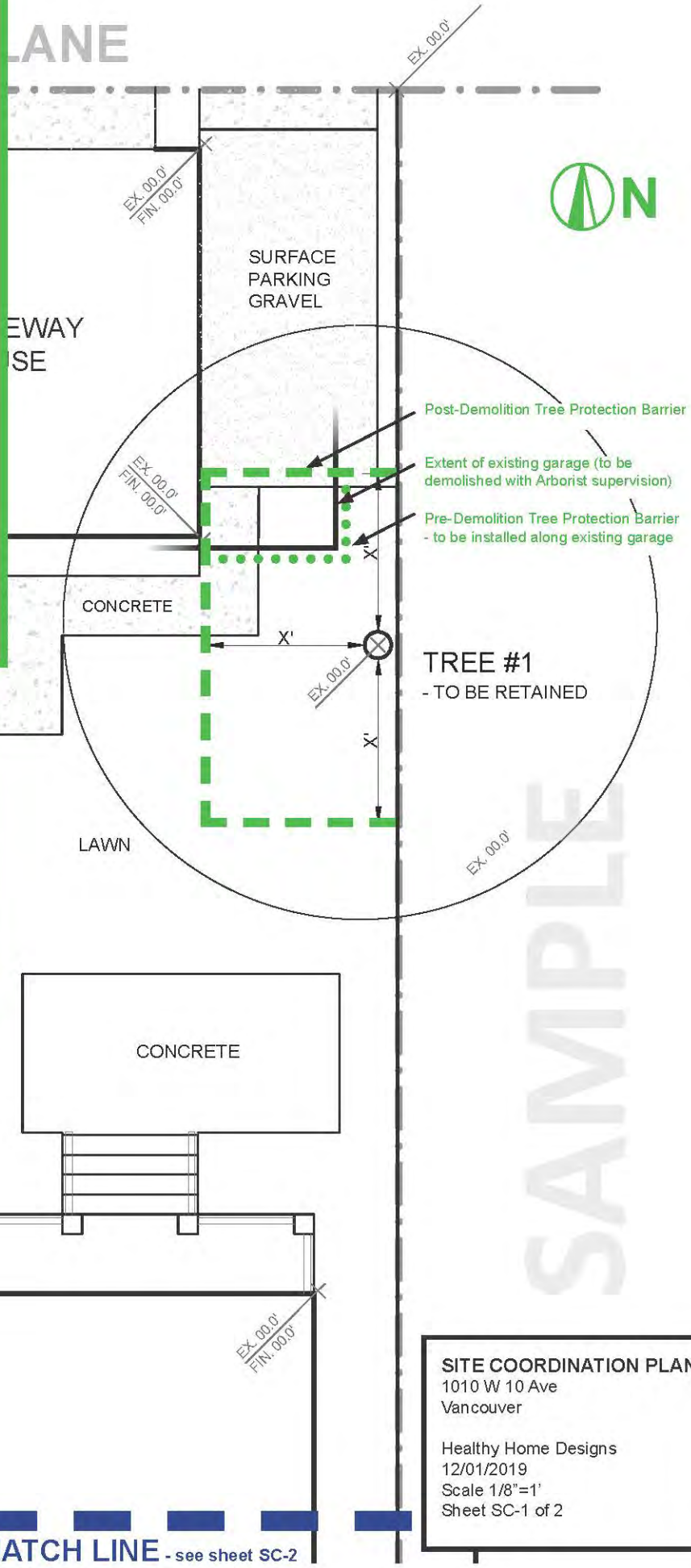


# SITE COORDINATION PLAN

Indicate the required information superimposed on the site plan. The plan should include:

- ❑ Tree Protection Barriers, dimensioned from tree trunks
- ❑ Construction site access
- ❑ Utility trenching
- ❑ Show existing site elements that impact tree protection. Associated arborist comments to be noted in plan
- ❑ Plan to be formatted to-scale, ensuring legible dimensions and notations
- ❑ Plan to be formatted to letter-size sheets, 8.5x11". Number sheets as needed
- ❑ Sheets to show street name, north arrow and match lines for clear site context



**SITE COORDINATION PLAN**  
 1010 W 10 Ave  
 Vancouver

Healthy Home Designs  
 12/01/2019  
 Scale 1/8"=1'  
 Sheet SC-1 of 2

STING  
 GLE  
 111 V

MATCH LINE - see sheet SC-2