



Sea2City

DESIGN
CHALLENGE

**RISE
TO
THE
CHALLENGE**





Contents

CHALLENGE SUMMARY	4
SEA2CITY CONTEXT	6
A City by the Salish Sea	8
False Creek Today	8
<i>Sea2City Challenge Sites</i>	12
<i>Sea2City Charrette Site</i>	14
Sea Level Rise and Vancouver	15
Sea2City and Coastal Adaptation Planning	16
SEA2CITY DESIGN CHALLENGE - THE DETAILS	17
Advisory Sessions and Workshops	18
Timeline	20
Deliverables	22
Background Information	25



CHALLENGE SUMMARY

Embraced by water, the City of Vancouver has always been a coastal community defined by its proximity to the ocean, river and mountains. Vancouver recognizes the need to plan for future sea level rise and to help vulnerable neighbourhoods to become more resilient to current and future coastal flooding.

The City is launching the Sea2City Design Challenge (Sea2City) to help inform a framework and vision to guide urban development and ecological revitalization in Vancouver's False Creek floodplain, a highly valued and constrained urban waterway in the heart of the city. The innovative and exciting design challenge will engage two multidisciplinary teams through a competitive application process to work co-operatively with the City of Vancouver and project partners to:

- Explore coastal adaptation approaches that respond to the social equity, economic, and ecological challenges posed by sea level rise and coastal flooding.
- Investigate coastal adaptation approaches for sea level rise beyond 1 metre.
- Expand the City's toolbox of coastal flood management approaches.
- Increase public awareness of climate change and sea level rise.

Sea2City will include a creative and interactive public engagement and communications program managed by the City of Vancouver. Selected design teams will participate in three rounds of events and activities. Each round will include public learning and design events as well as advisory sessions and workshops with groups established for the project (Community Advisory Group, Technical Advisory Group, City Advisory Team). The third and final round of public engagement will also include a 1-day, inter-team design charrette for a fifth Sea2City challenge site for teams to apply lessons learned through the challenge process. The two participating design teams will:

- Provide comprehensive design package for a preferred conceptual



coastal flood management approach for two sites in False Creek (each Design team will be responsible for two sites).

- Provide illustrative concepts showing where future coastal flood management approaches and/or structures could be developed along the currently unprotected portions of the False Creek shoreline.
- Participate in a one-day, inter-team design charrette at the conclusion of the Sea2City to apply lessons learned through the challenge process to a fifth site.
- Produce a final set of materials designed to inspire and inform the community and the City.

The Sea2City challenge sites represent the varied land use typologies found in False Creek along with a range of coastal flood management constraints and opportunities. The sites include high density mixed-use neighbourhoods, mixed-use local commercial areas, and valued parks and public spaces. The sites are all adjacent to the busy urban waterway that is False Creek.

Participating teams will be guided by the design principles developed through the 2021 False Creek Coastal Adaptation Plan, while evaluation of the concept designs will be directed by shared community values that were identified in the same project. Sea2City will also include additional guidance and input from xʷməθkʷəy̍əm

(Musqueam), Skwxwú7mesh (Squamish), and səliwəta4 (Tsleil-Waututh) Nations on whose unceded, ancestral, traditional homelands Vancouver and False Creek is located.

The amount budgeted for the professional fees for Sea2City can be found in the RFP which can be found at <https://bids.vancouver.ca/bidopp/openbid.htm> or at the province of BC's bid site www.bcbid.gov.bc.ca. Total fees include all applicable taxes and expenses, including travel. The City of Vancouver will support non-monetary benefits through a project marketing and communications program, including a dedicated project website, dedicated social media accounts, and regular project press releases to major national and international media outlets.



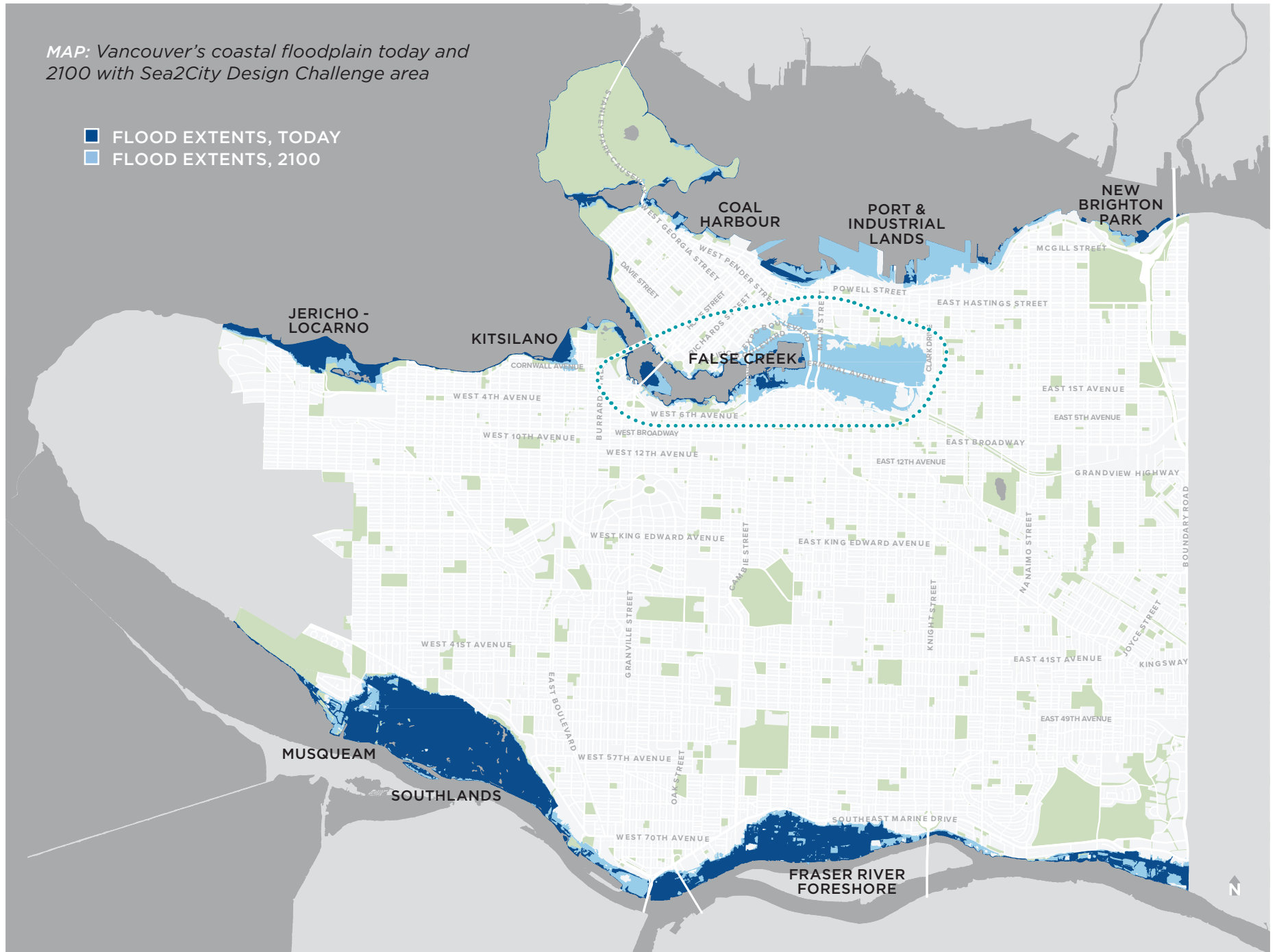
Sea2City Context

The City of Vancouver has always been a coastal community defined by its proximity to the ocean, river and mountains. Vancouver recognizes the need to plan for future sea level rise and to help vulnerable shoreline neighbourhoods, communities and businesses to become more resilient to present day and future coastal flooding.

The map shows Vancouver's coastal floodplain today and in 2100. Without flood management measures in place, areas in dark blue are vulnerable to flooding due to a major storm (1:500; 0.2 % AEP event) today, and the areas in light blue are vulnerable to flooding due to a major storm and 1 metre of sea level rise by 2100, or potentially decades earlier if global heating is not mitigated.

MAP: Vancouver's coastal floodplain today and 2100 with Sea2City Design Challenge area

- FLOOD EXTENTS, TODAY
- FLOOD EXTENTS, 2100



A City by the Salish Sea

Vancouver is situated on the unceded traditional homelands of xʷməθkʷəy̓əm (Musqueam), Skwxwú7mesh (Squamish), and səliłwətaɬ (Tsleil-Waututh). The area currently known as False Creek is of significant meaning to the local First Nations who stewarded the land since time immemorial.

Thousands of years before European colonization Musqueam, Squamish and Tsleil-Waututh Nations villages and settlements dotted the shorelines, with trade and travellers using the waterways as highways to travel great distances. Each Nation had, and continues to have, its own relationship to the area, including place names and uses for the lands and resources.

Musqueam, Squamish, and Tsleil-Waututh are important partners in the Sea2City Design Challenge and will be engaged through existing protocols and government-to-government channels that have been established with the City. The City of Vancouver will work with the successful teams to introduce them to the Sea2City challenge areas from an Indigenous, non-colonial perspective and facilitate any engagement and communications between teams and Musqueam, Squamish, and Tsleil-Waututh.

Many Indigenous peoples from Nations throughout BC and Canada reside in Vancouver. In Canada, after Winnipeg and Edmonton, the third-largest population of Indigenous people reside in Vancouver.

False Creek Today

False Creek is a bustling, urban, mixed-use waterfront area that is one of Vancouver's major destinations for residents and visitors alike. The area surrounds the False Creek inlet, which flows from English Bay beneath the Burrard, Granville, and Cambie Street bridges along the southern edge of the Downtown peninsula to Science World in the east. Historically one of Vancouver's major industrial centres, the last few decades have seen False Creek transition into a social and recreational heart of Vancouver featuring a variety of higher density multi-family residences, commercial areas, and parks that are used by many.

Before colonization, False Creek extended much further east to present day Clark Drive and was a large tidal mudflat. The area featured a number of streams flowing down the southern slopes, and provided abundant resources for Indigenous peoples, including some of the most productive salmon and trout runs in Vancouver. The area was filled in for industrial use in the early 1900's and for the first half of the 20th century False Creek was one of Vancouver's principal industrial areas, with extensive rail yards, lumber mills, shipbuilding, and other industrial activity. As industrial production shifted and moved out, False Creek became the focus of major urban renewal initiatives beginning in the 1970's which have continued to this day. False Creek's industrial legacy remains with issues related to contaminated soils and other issues.

Today, False Creek encompasses numerous, diverse neighbourhoods. False Creek North includes portions of Northeast False Creek, Yaletown, and Chinatown. False Creek South passes through Fairview, South East False Creek, Olympic Village, and False Creek Flats along the south shore. False Creek North and South both include sizeable parcels of yet-to-be developed land.



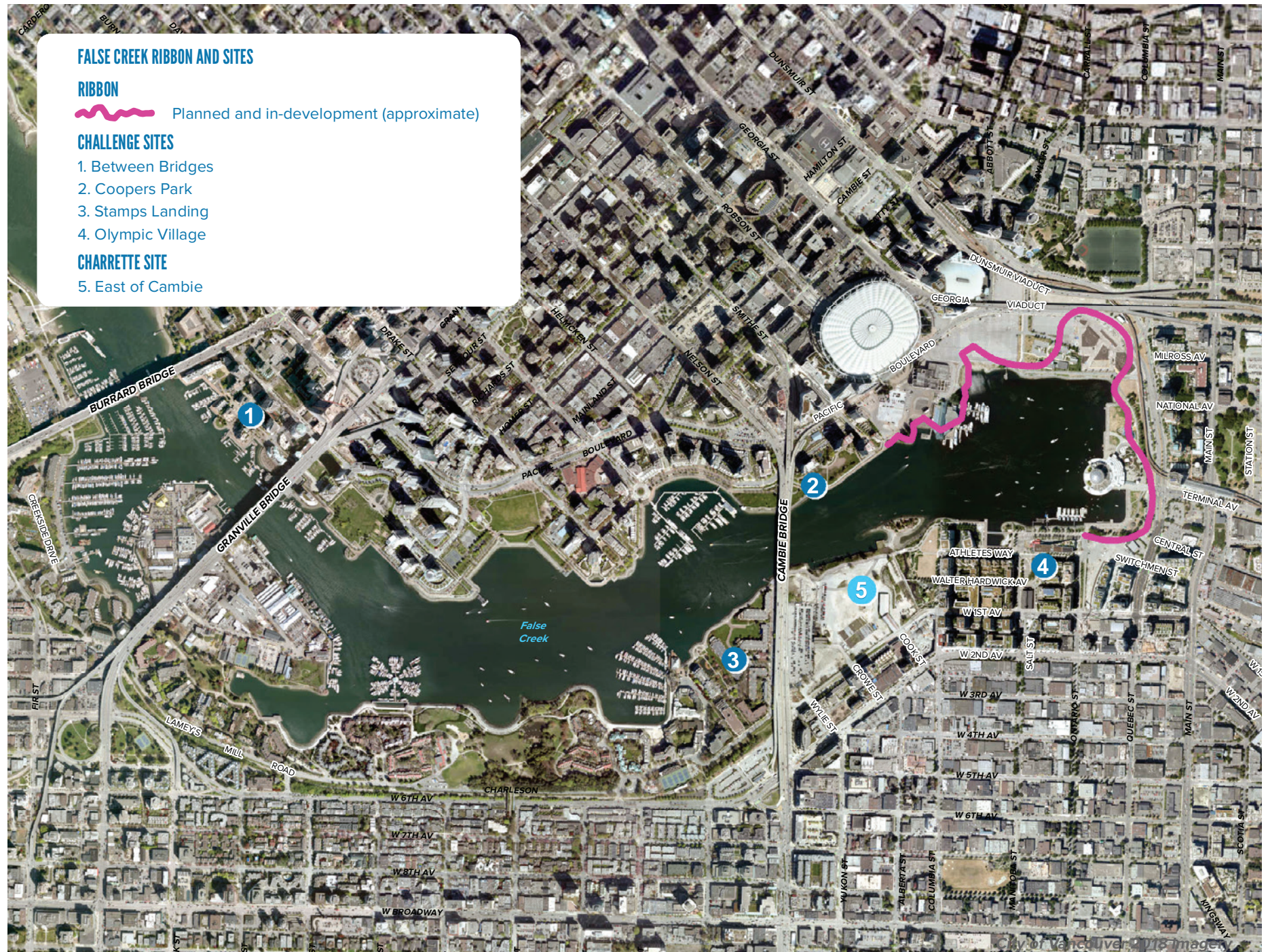
The Salish Sea area, indicated by the dark shading, is one of the world's most biologically rich inland seas, home to 37 species of mammals, 172 species of birds, 247 species of fish, and over 3,000 species of invertebrates. It is also home to eight million people.



Within False Creek, Granville Island is one of the most flood-vulnerable areas. The island features a mix of uses including a Public Market, retail shops, and a lively arts, culture, and culinary scene that make it one of Vancouver's most popular tourist destinations. It's also the site of a community centre, commercial and office spaces, float homes, and a marina. Granville Island will not be a Challenge Site but is an important Challenge consideration. Note that Granville Island is managed by the Canada Mortgage and Housing Corporation (a Federal agency) and not by the City of Vancouver. Granville Island will be involved in Sea2City and may participate in events but is undertaking a separate process for sea level rise planning.

The City of Vancouver has begun to plan and implement flood management structures (berms, dikes, and seawalls) in the eastern portion of False Creek. Sea2City refers to these structures and their general alignment as the "Ribbon". The two selected design teams will be asked to illustrate a conceptual alignment for the remainder of the False Creek "Ribbon," which represents showing where future flood protection structures could be developed.

MAP: False Creek – Planned Flood Management “Ribbon” and Sea2City Challenge Sites



SEA2CITY CHALLENGE SITES

There are four Sea2City challenge sites divided between sites on the north shore of False Creek and the south shore. They represent a mix of developed, urban spaces, parks and open space, and undeveloped areas.

False Creek North



1. Between Bridges:

Between Bridges is a complex site located east of Burrard Bridge and west of Granville Bridge. The site includes the seawall, the Hornby False Creek Ferry dock for the Aqua Bus service, a private marina, high-density residential towers, and mixed-use ground floors that include commercial and office uses. The site was developed between the mid-1980s and the early 2000s. To the northwest is Sunset Beach and the Vancouver Aquatic Centre, to the northeast is Beach Avenue and recent developments including Vancouver House, and to the southeast is high-density residential development and George Wainborn Park.

2. Coopers' Park:

Coopers' Park is located under the north end of Cambie Street Bridge. The park includes open fields, the seawall path, and a playground and basketball court beneath the bridge. The shoreline is a combination of rip rap revetments and sea walls. In the late 1990s and early 2000s, small saltwater marsh sections were developed with varying degrees of success. To the east of the site is Plaza of Nations, where a planned section of the Ribbon will present options for connection. To the north of the site is a variety of mixed-use development within the future flood extent areas, including BC Place stadium.





3. Stamps Landing:

Stamps Landing is a complex site located east of Charleson Park, bordered by the Cambie bridge to the east, and the Heather Civic Marina on the eastern shoreline. The site features rip rap revetment shoreline, park-space, and mixed used commercial residential development, including several waterfront restaurants. There is a combined sewer outfall located along the western portion of site with a discharge point offshore to the north of the site. The site includes a large public marina.



4. Olympic Village:

Olympic Village is a large mixed-use development first developed for the 2010 Winter Olympics as the athletes' village. The area includes a large number of high-density residential units with some rental developments and co-operative housing development, along with ground floor commercial shops and services. The area is home to Creekside Community Centre, a bustling section of the False Creek Seawall, and a marina and dock complex that supports False Creek's dragon boat community and an Aquabus/ False Creek Ferries water taxi dock. To the east of the site is the East Park development project, where a planned section of the Ribbon will present options for connection, while Hinge Park demarcates the western boundary.



SEA2CITY CHARRETTE SITE

The south shore of False Creek also includes a site for a joint-team, one-day, collaborative design charrette that will take place in the final phase of Sea2City.



5. East of Cambie:

East of Cambie is a large City-owned site located between the Cambie Street Bridge and Hinge Park. As a low area, the site is exposed to the greatest potential coastal flooding depths in False Creek under current conditions. Current uses of the site include a large social enterprise urban farm operated by Sole Foods Street Farms, a City works yard and parking facility for the Vancouver Police, and City-operated affordable, temporary modular housing. Undeveloped portions of the site have been used to host community events, including food truck festivals and visiting Cirque du Soleil performances. The site neighbors Hinge Park, which is the only biodiversity hotspot in False Creek. The site also neighbors Olympic Village, which is a large mixed-use development first developed for the 2010 Winter Olympics.



Sea Level Rise and Vancouver

Since the release of Vancouver's Climate Change Adaptation Strategy in 2012, the City has been working to understand and manage coastal flood risk. Starting in 2013, the City began modelling flood hazards and coastal flood risk in Vancouver (to the years 2100 and 2200). Early work identified community assets, infrastructure, and buildings at risk to flooding over time.

Next, a high-level assessment of flood management options for flood hazard areas within the City was conducted. This fed into the development of a sea level rise planning framework and will continue to inform public engagement and planning.

All of this work has informed the Coastal Adaptation Plan, a long-term planning effort to address coastal adaptation needs for the City of Vancouver. The Coastal Adaptation Plan's first piece of work was the Coastal Adaptation Plan – Fraser River Foreshore, which was completed in 2018. This project engaged stakeholders along the Fraser River to identify community values, sought input on potential flood management options, and crafted design and planning principles to use when developing flood management options for the area.

As part of the Coastal Adaptation Plan, a similar engagement program was carried out in False Creek in 2020. Engagement reviewed and refined the community values first identified for the Fraser River for False Creek. Engagement also informed participants about the upcoming Sea2City project.



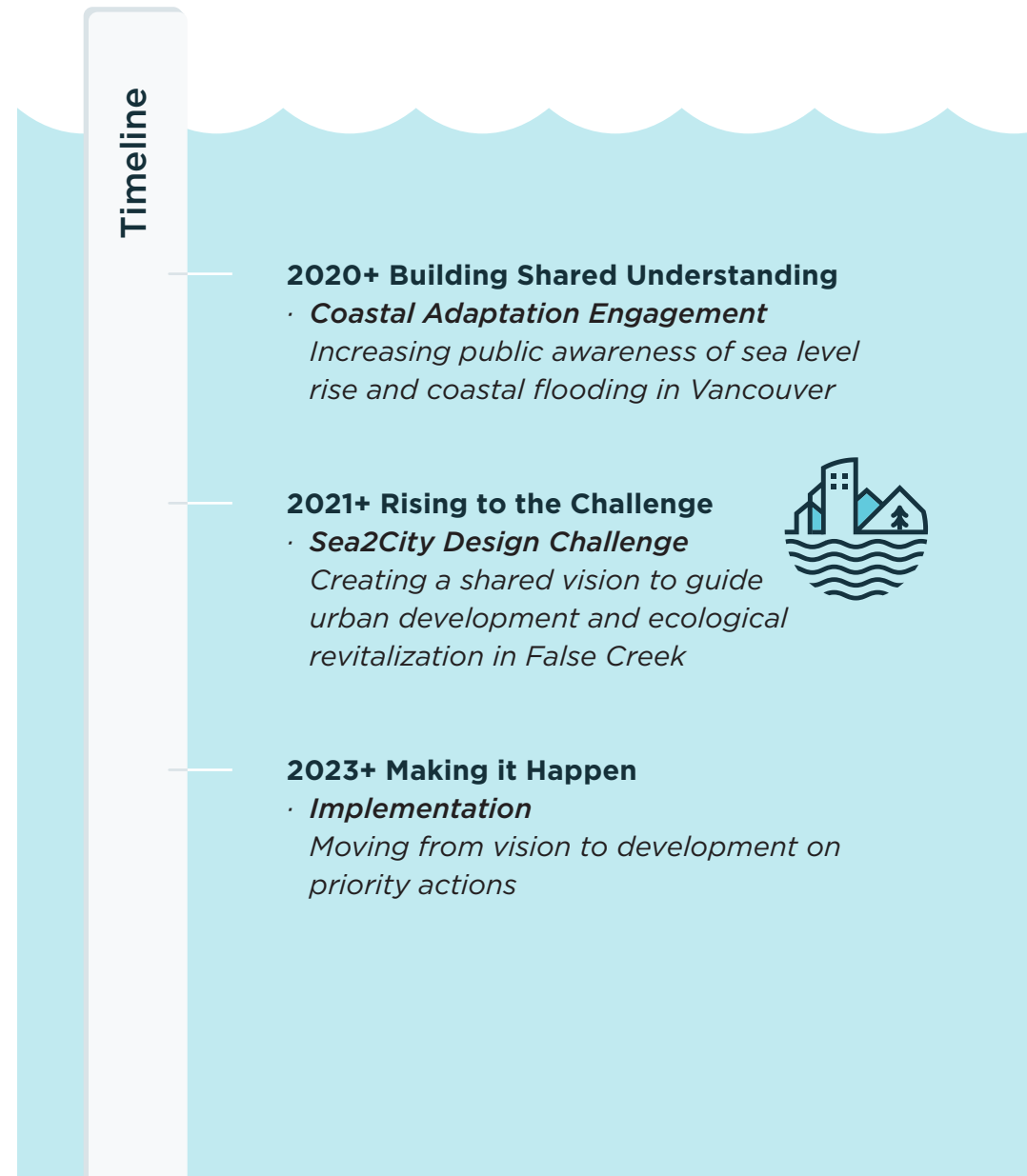
Sea2City and Coastal Adaptation Planning

Outputs from the Sea2City Design Challenge will be used to inform the next phase of the City's overarching Coastal Adaptation Plan and be further refined by the City with project partners, Indigenous governments, stakeholders, and coastal regulators. This plan will provide a framework and vision to guide urban development and ecological revitalization for coastal neighbourhoods across the City, including False Creek and support future Coastal Adaptation Plan work in other coastal Vancouver neighbourhoods.

This implementation work will begin after the completion of Sea2City and will likely continue for several years recognizing the additional research, planning, technical design, and engagement that will be required to move coastal adaption forward in such a constrained urban waterway as False Creek.

The figure outlines the overarching approach for the City's ongoing Coastal Adaptation initiative over the next three years and beyond.

FIGURE: Coastal Adaptation High Level Timeline



Sea2City Design Challenge – The Details

As a City of Vancouver project, the Sea2City Design Challenge application will go through a traditional City Request for Proposals (RFP) process. The RFP is available at:

<https://bids.vancouver.ca/bidopp/openbid.htm>

RFP submissions will be reviewed by the City and up to two teams will be selected to participate in Sea2City.

Respondents can be either teams or individual firms. It is expected that teams will be led by a qualified and experienced landscape architect, urban designer, urban planner, engineer, or architect. The City encourages teams to include other relevant specialists. Teams should possess experience in successfully handling inclusive and complex design and planning processes, including experience in environmental planning, climate adaptation, designing for universal accessibility, ecological regeneration, social inclusivity, coastal planning, and livability in urban spaces. Teams must also demonstrate in-depth understanding of climate change adaptation and approaches to achieving resilience. The City encourages collaboration between local, national and international professionals.



Advisory Sessions and Workshops

Sea2City will include three rounds of advisory sessions and workshops with groups established for the project (Community Advisory Group, Technical Advisory Group, City Advisory Team), along with public-facing events which will be managed by the City. Project timelines are provided in the next section. Round one advisory sessions and workshops are expected to take place September/October 2021, round two is expected to take place March/April 2022, and round three is expected to take place June/July 2022.

Due to the evolving nature of the COVID-19 pandemic, the first round of advisory sessions and workshops with groups established for the project (Community Advisory Group, Technical Advisory Group, City Advisory Team) will likely be digital and remote. Some travel (if team members are traveling from abroad) is expected for the second and third rounds of Sea2City advisory sessions and workshops.

CITY ADVISORY TEAM – a group of key City staff including project leads from the City’s Sustainability Department with staff from Engineering, Planning, Real Estate, Facilities, and Community Engagement. Representatives from the Vancouver Board of Parks and Recreation will also participate along with representatives from major City facilities operating in the study areas (e.g., Roundhouse Community Centre, Creekside Community Centre). Representatives from Musqueam, Squamish and Tsleil-Waututh will also participate on this team. The City Advisory Team will provide feedback and input through three one-day Collaboratoriums with the Technical Advisory Group.

Representatives from Granville Island which is located within False Creek but under the jurisdiction of the federal government’s Canada Mortgage and Housing Corporation (CMHC) would also participate on the City Advisory Team.

TECHNICAL ADVISORY GROUP – a group of external, locally-based experts from private firms, non-governmental organizations, and academics with specific local experience and skills in coastal engineering, coastal adaptation and landscape design, environmental planning, geotechnical and seismic, and the regulatory environment. Representatives from major asset operators will also be invited to participate on the Technical Advisory Group, including Metro Vancouver Regional District, BC Hydro, Fortis, etc.

The Technical Advisory Group will provide feedback and input through the three one-day Collaboratoriums with the City Advisory Team and participate in the inter-team design charrette for the fifth Sea2City site. Collectively, the group is intended to provide technical advice and local knowledge and to provide a forum to discuss and clarify engineering and technical design issues, criteria, and concepts. The group is intended to augment any engineering experience on the design team. The Technical Advisory Group will not provide any new engineering analysis or modelling.

COMMUNITY ADVISORY GROUP – a group of representatives from local community and social organizations, neighbourhood and ratepayers’ associations, business groups and local Business Improvement Associations, arts and culture organizations, recreation groups, and environmental organizations, some of whom participated in the Sea2City lead-up project, the 2020 False Creek Coastal Adaptation Plan. The group will provide a forum for feedback, guidance, and advice to teams at key milestones during Sea2City. Specifically, the CAG will support design teams by:

- Acting as a sounding board for the Sea2City design teams to share and discuss ideas and design concepts.
- Advising teams of their organization’s / community’s / constituency’s perspectives relating to coastal flood adaptation in False Creek.
- Providing guidance, critiques, and suggestions on proposed coastal adaptation approaches and concepts.
- Providing a sense of the broader community’s reactions and concerns and how these might be addressed.

Given the importance of both areas to Musqueam, Squamish, and Tsleil-Waututh, Sea2City will include their involvement and engagement through existing government-to-government channels with the City. The design team(s) will also participate in sessions to introduce them to these partners and to help ground their perception of the Challenge sites from a non-colonial, Indigenous perspective.

Advisory sessions will be convened during each of the three rounds of Sea2City events and activities outlined below. The dates are approximate and may change.



SEA2CITY ROUND 1 EVENTS – SEPTEMBER/OCTOBER 2021

- Team welcome and onboarding session
- Indigenous Perspectives and Decolonization Workshop
- Public Kick-off event
- Collaboratorium 1 (inter-team session – sharing lessons) with City Advisory Team and Technical Advisory Group
- Community Advisory Group Session

Collaboratorium 1: The full day workshop will provide an opportunity for the teams to introduce themselves to the City and Technical Advisory Group. The workshop will also provide the design teams an overview of past, current, and ongoing City projects and planning in False Creek along with major development projects underway. It will also provide an opportunity to explore

some of the technical considerations (e.g., coastal geomorphology, seismic, regulatory, planning) associated with False Creek and the Sea2City challenge sites. The event will include a review of the lead-up project, the 2020 False Creek Coastal Adaptation Plan, and introduce the Values-based Planning Primer that was produced as part of the project. The documents identify design principles to be used by teams to inform their design work and outlines values-based criteria that will be used to help evaluate Sea2City design options. This approach will help ensure that coastal flood adaptation options developed by the teams consider identified community issues and provides a more transparent evaluation framework that reflects shared community values.

SEA2CITY ROUND 2 EVENTS – MARCH/APRIL 2022

- Indigenous perspectives workshop
- Collaboratorium 2 with City Advisory Team and Technical Advisory Group
- Community Advisory Session
- Public Event

Collaboratorium 2: A one day workshop with the City Advisory Team and the Technical Advisory Group. The event will focus on sharing insights around three conceptual adaptation approaches for each challenge site (i.e., resist, accommodate, move/avoid), ground-truthing early work in technical considerations for the three adaptation approaches, and evaluating each using both value criteria and technical criteria from the False Creek Coastal Adaptation Plan – Value-based Planning Primer.



SEA2CITY ROUND 3 EVENTS - JUNE/JULY 2022

- Indigenous perspectives workshop
- Collaboratorium 3 with City Advisory Team and Technical Advisory Group
- East of Cambie Design Charette
- Community Advisory Session
- Public Event/Design Exhibition (an associated publication will be explored as part of potential wrap activities)

Collaboratorium 3: A one day workshop with the City Advisory Team and the Technical Advisory Group. The event will focus on sharing learnings from the teams' refined design concepts for their two sites, how the site design concepts score against value criteria and technical criteria, and a discussion around costing considerations and challenges for the two site design options. The session would also review the teams' conceptual alignments for the False Creek "Ribbon."

East of Cambie Design Charrette: A one day, inter-team, collaborative design charrette with the City Advisory Team and the Technical Advisory Group for a fifth challenge site called East of Cambie. The design charrette would have design teams working in mixed groups to develop three preliminary scenarios for the site (protect/resist; adapt/accommodate; avoid) and fourth, more refined scenario highlighting the charrette teams' suggested scenarios for the site.

Public Event/Design Exhibition: Teams will participate in a public wrap-up event and celebration to be linked to the joint design charette. Comprehensive design packages will be displayed at this event.



Deliverables

The two teams selected for the Sea2City Design Challenge will be asked to provide a comprehensive design package for the two challenge sites assigned to them and their conceptual scenarios for the False Creek “Ribbon”. The design package will be in an accessible format that can be shared and understood by members of the public, City staff, and decision-makers. This package will include the following.

- Illustrative site analyses of both sites suitable for presentation to the public and project partners.
- A package of six exploratory concepts that broadly illustrate each adaptation scenario (resist, accommodate, move/avoid) for both assigned Sea2City challenge sites. Each should include a plan view and a least one section view with a brief description of the scenario. These initial concept explorations will be presented at the second Collaboratorium and inform the development of a more refined, “preferred” concept design for the sites.
- A preferred conceptual site design (i.e., ~10% conceptual design) for each of the two challenge sites. Designs should show key features and characteristics of the proposed flood management structure(s) or approach(es) such as the circulation system, path hierarchy, locations of key features like internal drainage systems, green infrastructure components, buildings or other structures, areas of planting and areas of hardscape, spot elevations or contours indicating slope, etc. The design responses should include, but are not limited to, the following:
 - A concept plan view of proposed coastal flood management structure(s) or approach(es) the design team propose for both sites.
 - Cross-sections of the coastal flood management structure(s) or approach(es) proposed for both sites.
 - Annotated perspective renderings of the proposed coastal flood management structure(s) or approach(es) for both sites.
 - An illustrated description of how the proposed coastal flood management structure(s) or approach(es) for both sites responds to findings from the False Creek Coastal Adaptation Plan (i.e., community values, planning principles, design principles and supporting design attributes).
- Suggested phasing approaches and/or diagrams
- Annotated diagrams illustrating conceptual scenarios for the False Creek “Ribbon”. The Ribbon demarcates a potential right-of-way from the East Basin along the north and south shores of False Creek where future flood protection measures could be implemented. Three high-level concepts for continuous flood management around the entirety of False Creek will be developed. Each map will explore how a management approach could be applied to the area. The three flood management scenarios to be explored will be: (1) protect/resist; (2) adapt/accommodate; and (3) move/avoid. Each team will be assigned a portion of the Ribbon (i.e., south or north shore of False Creek).

- The comprehensive design package must also integrate the following content:
 - Technical design considerations that describe how considerations and constraints identified by the City Advisory Team and Technical Advisory Group (i.e., geotechnical, seismic, civil) were incorporated into site design concepts and their team's proposed Ribbon alignment. Technical considerations requiring additional study and clarification should be noted and prioritized.
 - High-level cost considerations for the development of the preferred conceptual site designs for the two challenge sites. Cost considerations will be based on experience with comparable international and local projects (e.g., East Fraser Lands, North East False Creek, Plaza of Nations, East Park, etc.) and developed with input from the City Advisory Team and Technical Advisory Group.
 - Adaptive design considerations that review and elaborate on the adaptability of the two concept designs for sea-level rise scenarios of 1.4m and 2.0m.
 - Design and/or planning considerations for the City team to consider in the next phases of the flood management planning for the preferred conceptual site designs for the two challenge sites.



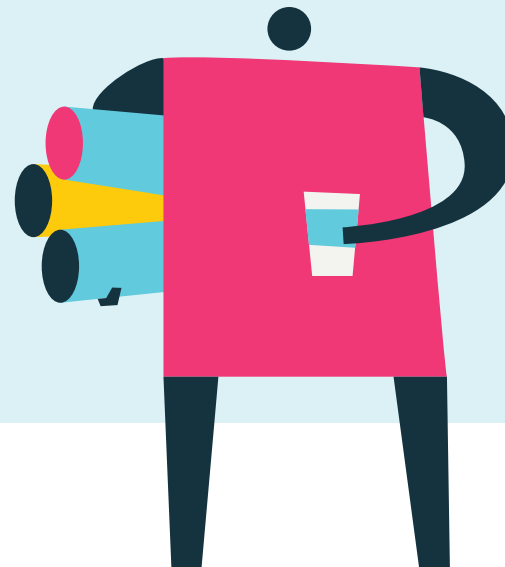
Explained: The City of Vancouver's Request for Proposal Process

Sea2City is being managed directly by the City of Vancouver. This provides many advantages, including direct guidance from City staff and deliverables that are directly targeted at what the City needs. It also means that submissions are required to go through the public Request for Proposal (RFP) process. The RFP document can be found here:

<https://bids.vancouver.ca/bidopp/openbid.htm>

The following general submission requirements will be found in the RFP in addition to other City of Vancouver requirements that can be found in the RFP.

- Provide an outline of your understanding of the goals and importance of the Sea2City Design Challenge within the local context. This statement should also outline your understanding of, and general approach to, climate adaptation and resiliency as planning and design challenges. Limit the text to a maximum of 1,000 words (use of illustrations and other graphic materials is encouraged).
- Include up to five examples of relevant past work. Maximum of 10 letter-sized pages total including text and images as appropriate. Selected examples should indicate how they relate to the Sea2City Design Challenge and demonstrate experience with one or more of the following:
 - *Resolution of complex planning and design problems*
 - *Projects that reflect and strengthen identity and place*
 - *Landscape designs that address coastal adaptation and/or climate resiliency*
 - *Projects that incorporate innovative phasing and implementation approaches*
 - *Engagement processes for large projects, complex stakeholder environments, and/or sensitive issues*



Background Information

The following reports and studies are available. Teams will receive updates on concurrent planning and design projects underway in challenge areas as part of Collaboratorium 1 and will be provided with an Open data package (3D building models, flood data, etc.).

- Coastal Adaptation False Creek - 2021
- Coastal Adaptation False Creek Values-based Planning Primer - 2021
- Coastal Adaptation False Creek Map Atlas - 2021
- City Wide Engineering Performance Criteria for Flood Protection Structures Guidelines - 2021
- North East False Creek Engineering Performance Criteria for Flood Protection Structures Guidelines - 2021
- Olympic Village to False Creek south overland stormwater flow paths - 2020
- Charleson Park Stormwater Management - 2020
- Engineering Design Reference for Shoreline Flood Protection - 2020
- North East False Creek Shoreline Flood Protection Performance Criteria - 2020
- Northeast False Creek flood management infrastructure advice - 2018
- Coastal Adaptation Plan - Fraser River Foreshore - 2018
- North East False Creek Indigenous Engagement Summary report - 2018
- East Fraser Lands - Flood Management Works Concept - 2017
- Marine and Coastal Structures Design Reference - 2016
- Seawall Inspection and Condition Assessments (SNC Lavalin reports) - 2015
- Flood Construction Levels (FCL) - 2014

In addition to Sea2City, the City of Vancouver is currently working on a number of planning, design, and development projects with relevance to the Sea2City. The City will provide an overview of these projects at the first Collaboratorium.

- Vancouver Plan
- East Park False Creek park design
- Cambie Seismic Upgrades - North Early Works
- North East False Creek
- Plaza of Nations
- Coopers' Park Expansion
- Charleson Park Water and Stormwater Upgrades
- West End Waterfront Master Plan



