

Background

Project timeline



Existing site: Slocan Park



⌚ Not to Scale

Overview

A park renewal is planned for Slocan Park, introducing new and upgraded amenities.

The vision is to create a welcoming space for a diverse range of users, with a focus on youth. The new features will integrate with the landscape and connect to the new rain garden.

Slocan Park is a 4.15 hectare community park in Renfrew-Collingwood neighbourhood immediately adjacent to the 29th Avenue Skytrain Station. The park currently includes the Slocan Fieldhouse/Community Hall Building, three grass playing fields, tennis courts, a community garden, playground, and concrete wading pool.

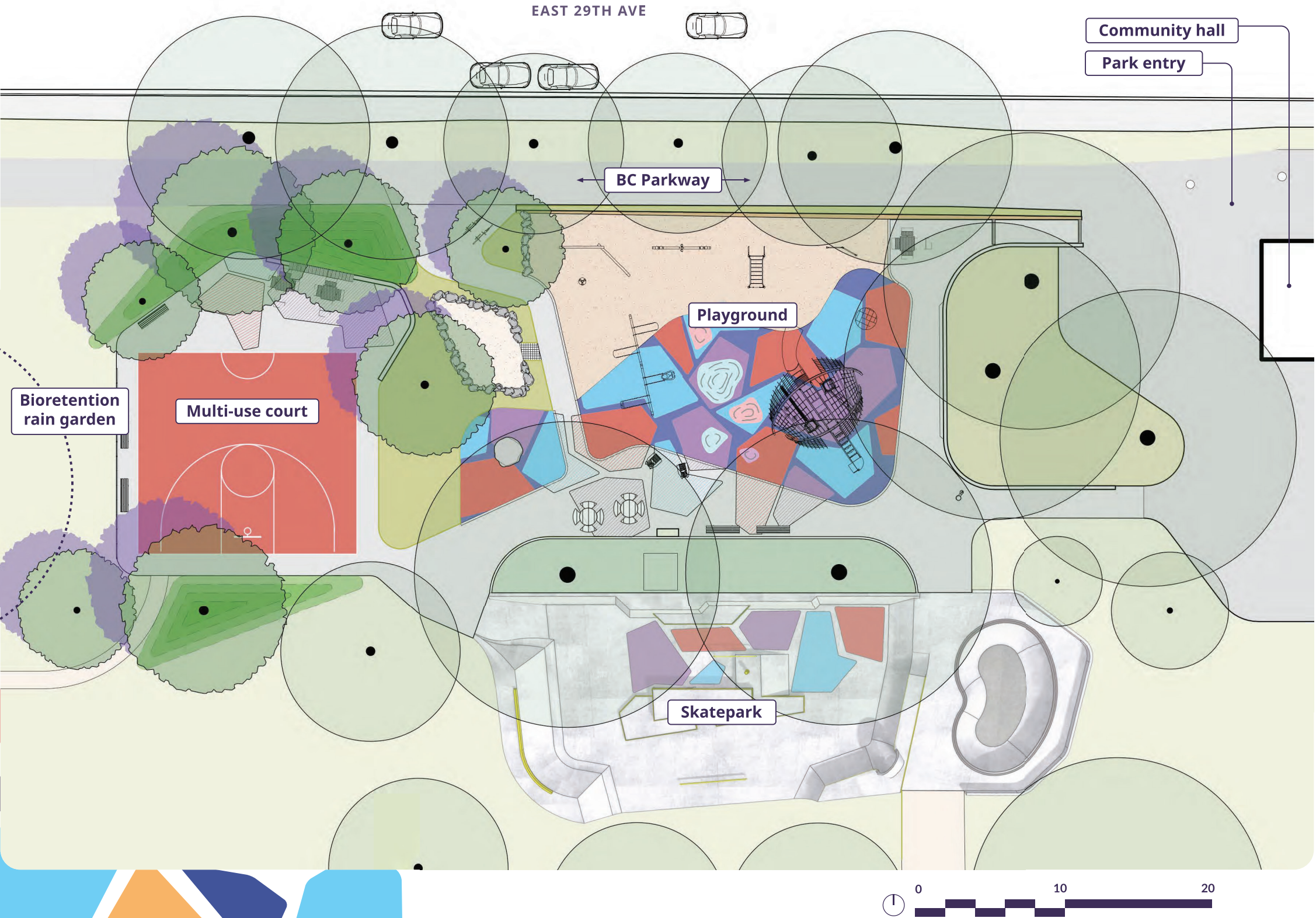
Bioretention rain garden

In the northwest corner of the park near the playground, City of Vancouver and Park Board Engineering are creating a seasonal wetland to capture and clean rainwater. The bioretention garden will feature native plants to improve stormwater quality and an outlet to control seasonal water levels.

The Vancouver Park Board gratefully acknowledges that this project resides on the unceded, traditional, and ancestral territories of the xʷməθkʷəy̓əm (Musqueam), Skwxwú7mesh (Squamish), and səliłwətał (Tseil-Waututh) Nations.

Design Concept

Park overview



Proposed concept

A park renewal is planned for Slocan Park, introducing new and upgraded amenities:

- Playground & multi-sport court: an upgraded playground and new sport court to support children and youth of all ages and abilities
- New skatepark: replacing the underutilized wading pool with a custom concrete skatepark, enhancing the park's youth-focused amenities

The vision is to create a welcoming space for a diverse range of users, with a focus on youth. The new features will integrate with the landscape and connect to the new rain garden.

Want to learn more?

Learn more by scanning the QR code or visiting:
www.vancouver.ca/slocan-park

Comments or questions?
email: slocanyouthhub@vancouver.ca call: 3-1-1



Slocan Park



Playground + Multi-use Court

Site plan



Play elements

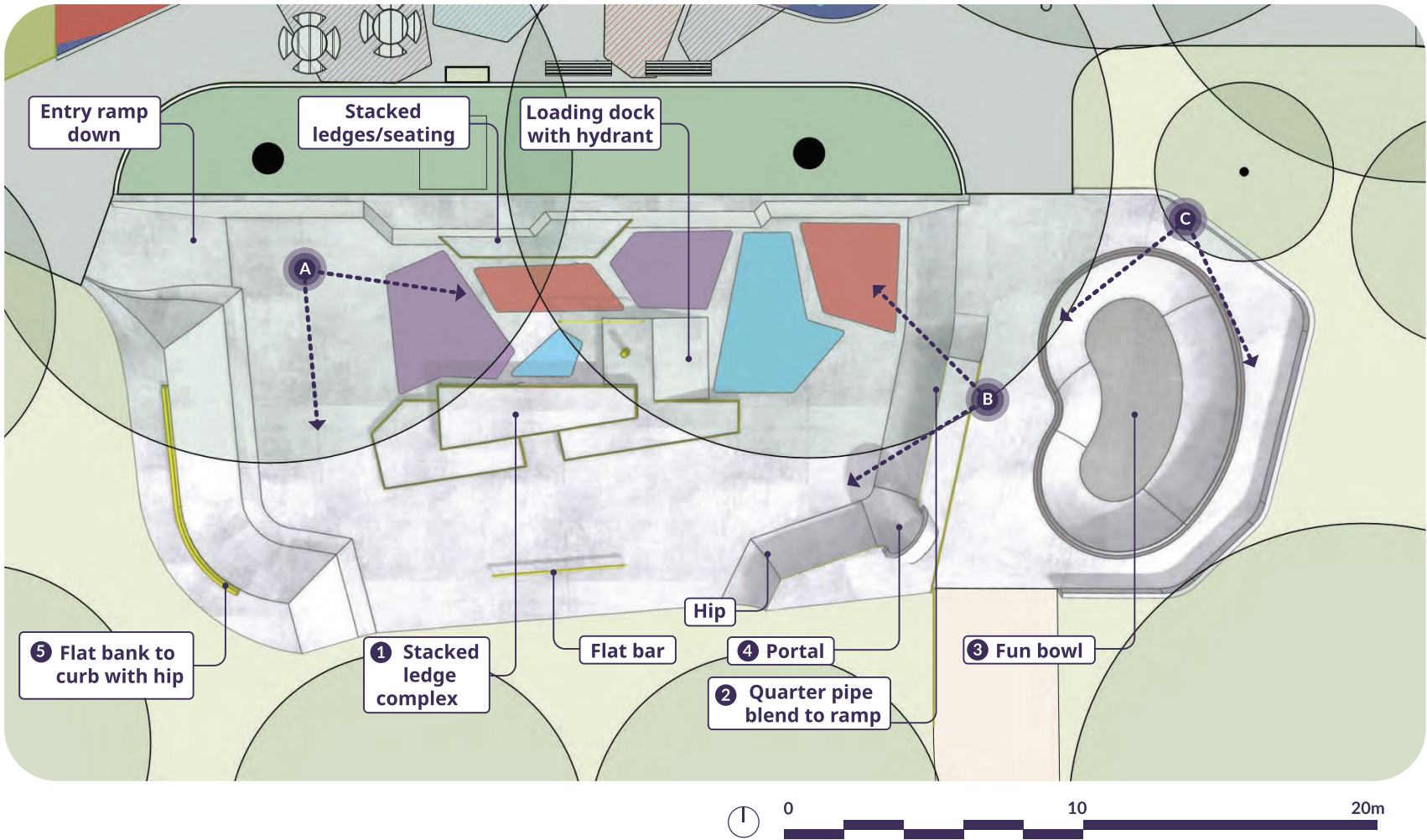


Court elements



Skatepark

Site plan



Precedent Images



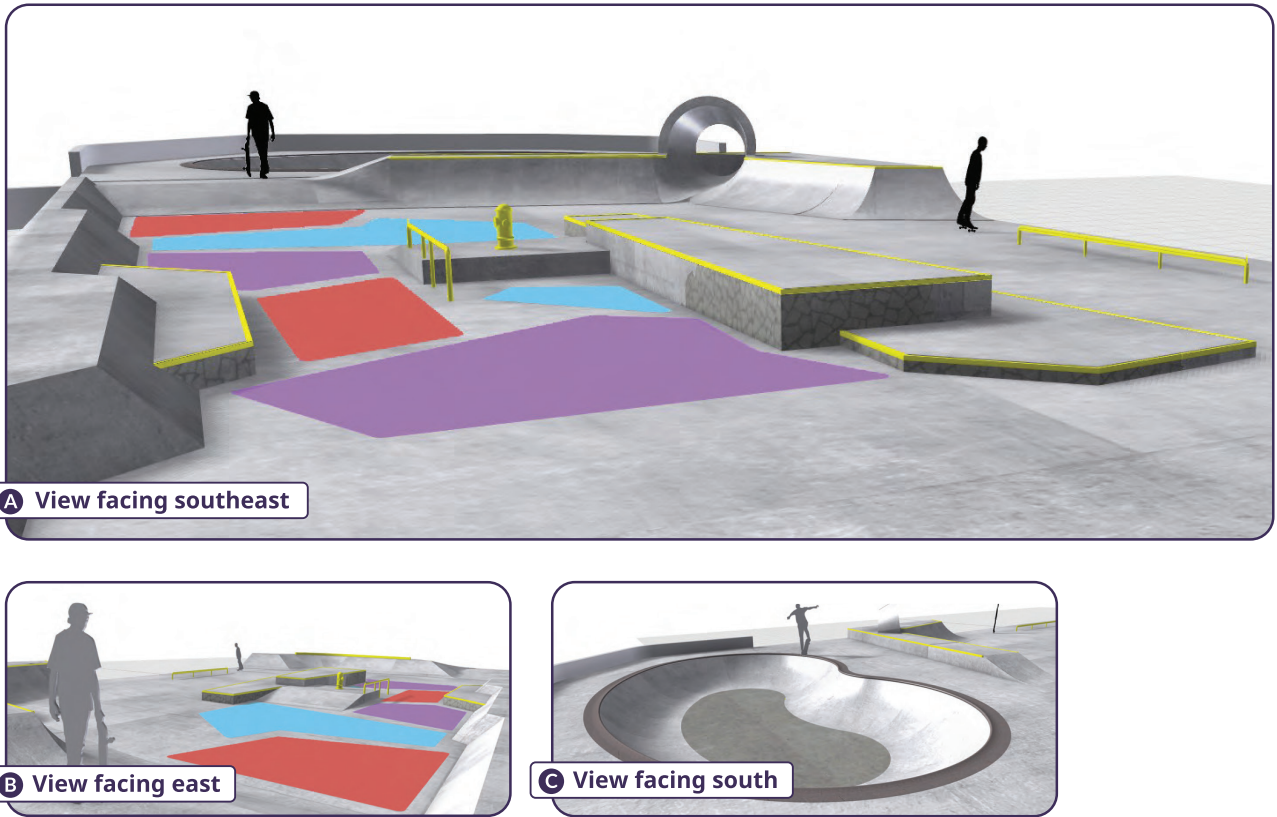
The goal of the Vancouver Skateboard Amenities Strategy (approved in June 2022) is to create a well-connected network of welcoming skate amenities that serve a thriving and diverse skate community.

Phase 1 implementation of the strategy includes the construction of a new skatepark in the Slocan-Renfrew neighbourhood.

To respond to the strategy, the park design will include a new skatepark that will replace the underutilized wading pool.

- The proposed skatepark design includes a variety of approachable features that are accessible to a range of user abilities.
- Nestled amongst mature trees, within the existing wading pool area, to create an enhanced skating experience.
- Nearby benches and picnic tables create a space for spectators and youth to socialize and watch the action.

Renderings



Slocan Park

