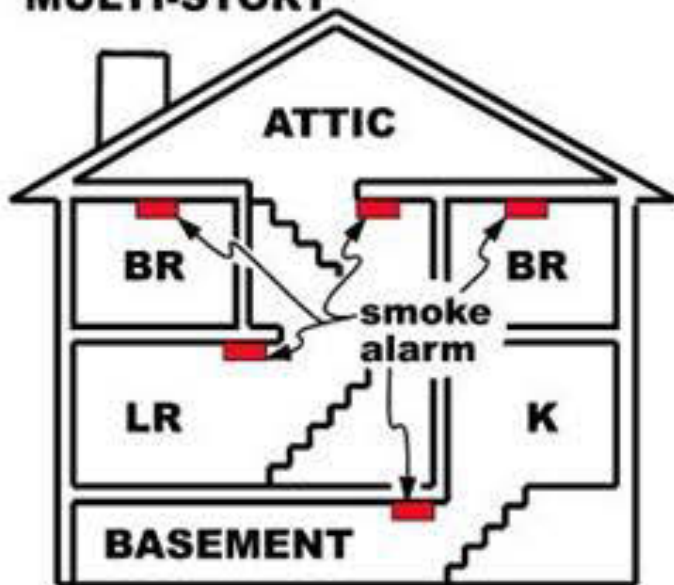
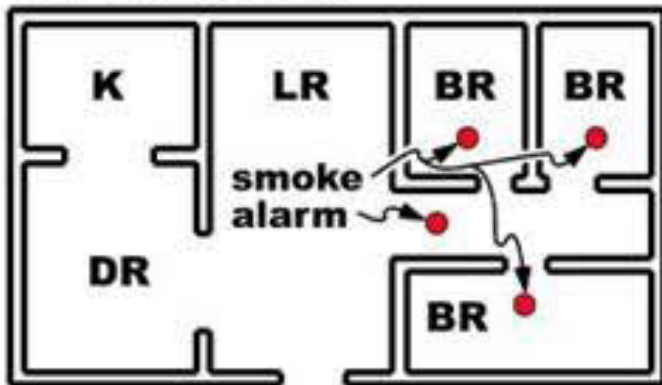


PLACE ONE SMOKE ALARM ON EVERY FLOOR AND SLEEPING ROOM

MULTI-STORY



SINGLE LEVEL



“Hard-wired” means connected to a permanent electrical circuit; installation requires an electrical permit

“Interconnected” means when one smoke alarm is activated by smoke, all smoke alarms in the dwelling and associated secondary suite will sound

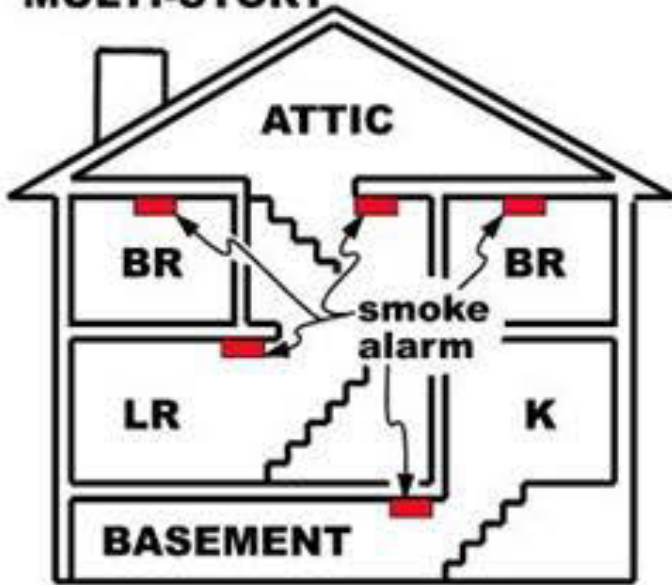
Scenario #1 – No Smoke Alarms in Dwelling

Work required:

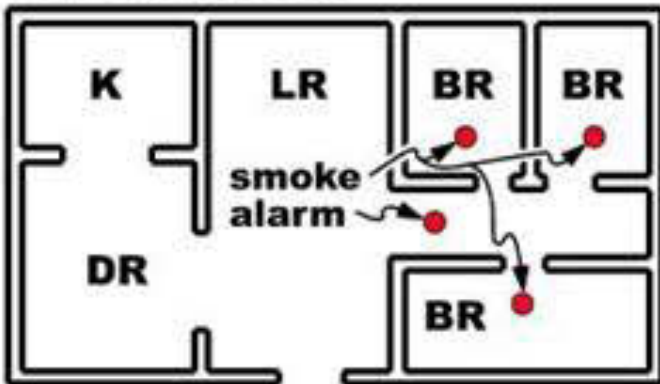
1. Add new set of interconnected smoke alarms outside and inside bedrooms. Smoke alarms permitted to be battery-operated
2. Test smoke alarms for interconnection

PLACE ONE SMOKE ALARM ON EVERY FLOOR AND SLEEPING ROOM

MULTI-STORY



SINGLE LEVEL



“Hard-wired” means connected to a permanent electrical circuit; installation requires an electrical permit

“Interconnected” means when one smoke alarm is activated by smoke, all smoke alarms in the dwelling and associated secondary suite will sound

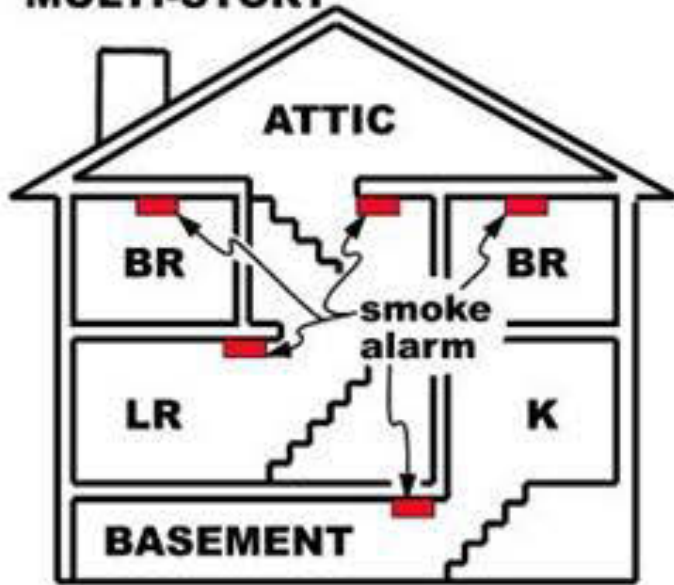
Scenario #2 – Battery Operated Smoke Alarms in Dwelling

Work required:

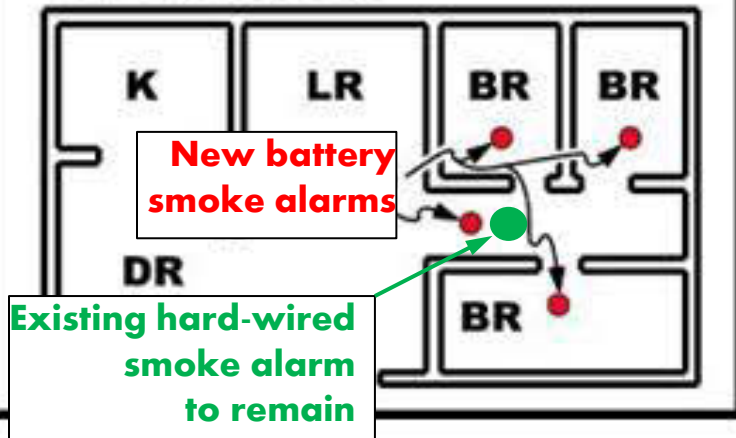
1. Remove existing battery operated smoke alarms
2. Add new set of interconnected smoke alarms outside and inside bedrooms. Smoke alarms permitted to be battery-operated
3. Test smoke alarms for interconnection

PLACE ONE SMOKE ALARM ON EVERY FLOOR AND SLEEPING ROOM

MULTI-STORY



SINGLE LEVEL OPTION B



“Hard-wired” means connected to a permanent electrical circuit; installation requires an electrical permit

“Interconnected” means when one smoke alarm is activated by smoke, all smoke alarms in the dwelling and associated secondary suite will sound

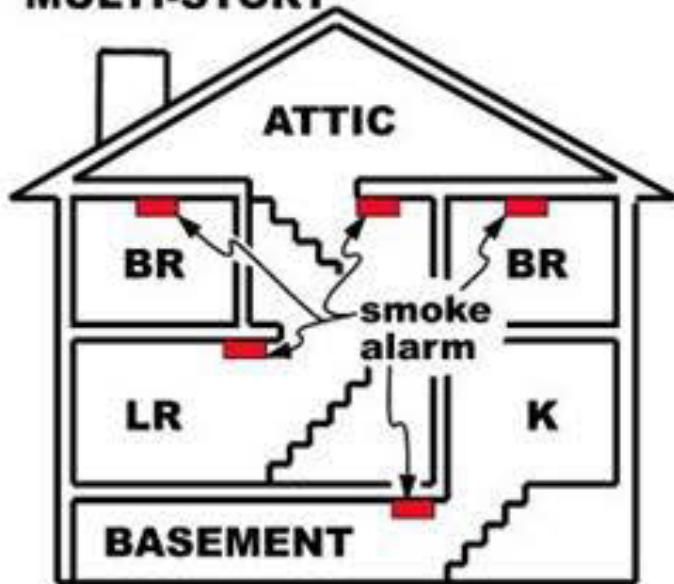
Scenario #3 – Dwelling has existing hard-wired smoke alarms but missing smoke alarms in sleeping rooms and other locations

Work required:

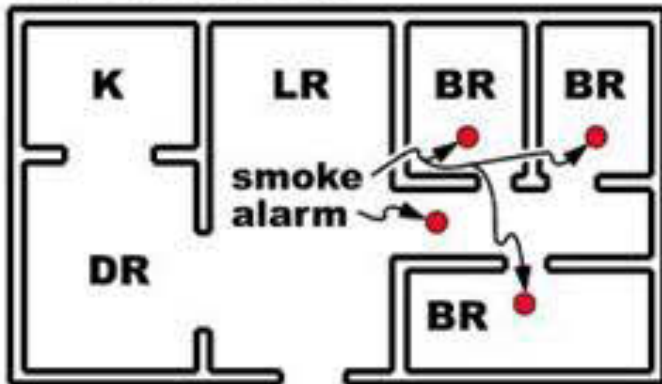
1. Option A or B
 - A. Add new hard-wired smoke alarms for the sleeping rooms and other locations to the existing hard-wired smoke alarm circuit, or
 - B. Add new set of battery-operated smoke alarms that are interconnected, to duplicate existing smoke alarm locations plus new locations. As a result, in some rooms there would be a new battery-operated smoke alarm installed beside an existing hard-wired smoke alarm. Existing hard-wired smoke alarms must not be removed.
2. Check due date for replacement of smoke alarms. Existing hard-wired smoke alarms must be replaced with new hard-wired smoke alarms when due for replacement.
3. Test smoke alarms for interconnection

PLACE ONE SMOKE ALARM ON EVERY FLOOR AND SLEEPING ROOM

MULTI-STORY



SINGLE LEVEL



“Hard-wired” means connected to a permanent electrical circuit; installation requires an electrical permit

“Interconnected” means when one smoke alarm is activated by smoke, all smoke alarms in the dwelling and associated secondary suite will sound

Scenario #4 – Dwelling has hard-wired smoke alarms inside and outside of bedrooms

Work required:

1. Check due date for replacement of smoke alarms and replace if overdue
2. Test smoke alarms for interconnection