

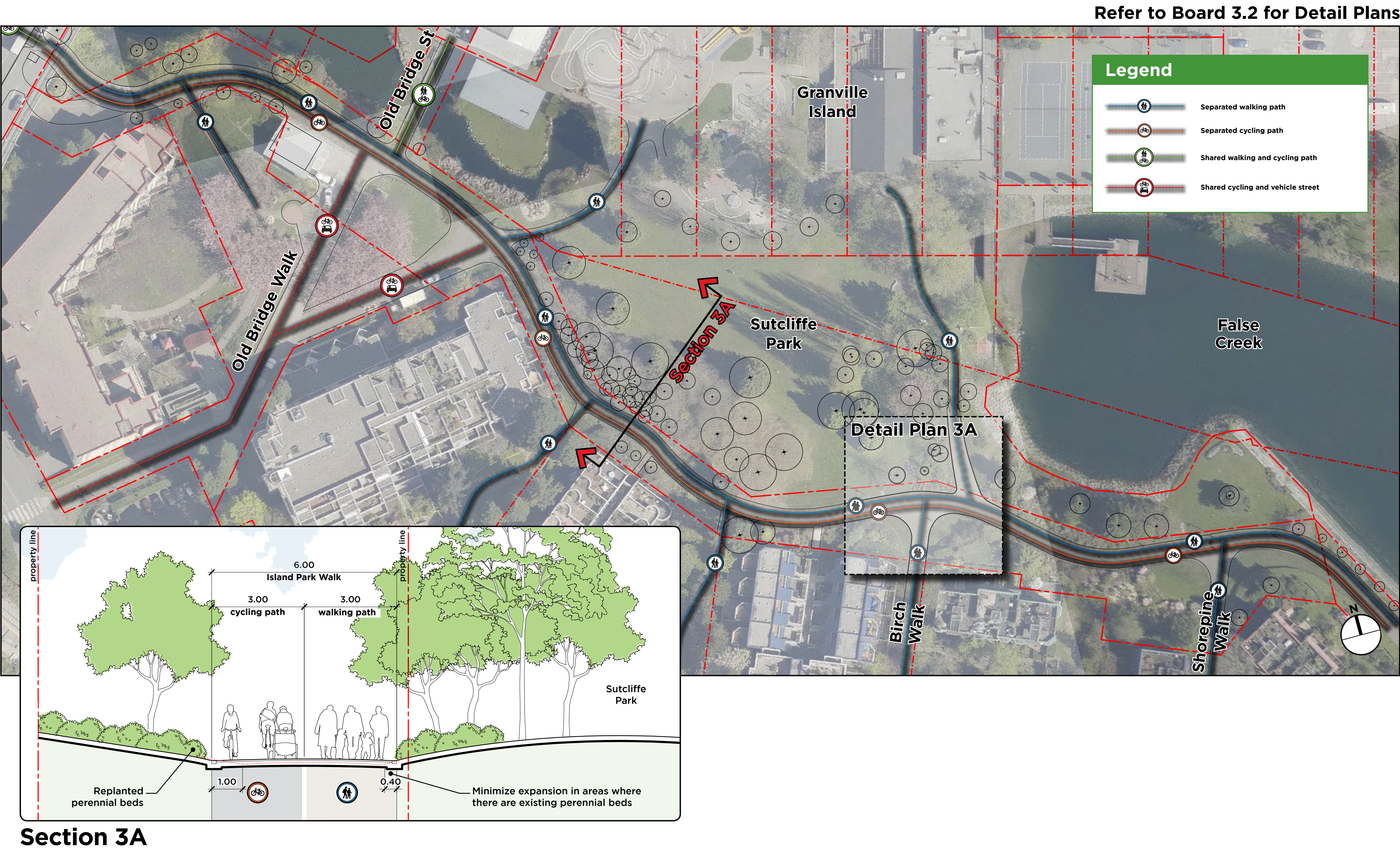
What You Told Us

- Widen the pathway through Sutcliffe Park to allow separation. **(80% Yes, 9% No)**
 - Create larger nodes (open public spaces) at entrances to Granville Island. **(66% Yes, 13% No)**
 - The perennial plant beds are highly valued by residents and visitors.
- Replacing/relocating impacted perennial beds in adjacent locations is a reasonable trade-off for a wider pathway. **(66% Yes, 21% No)**
 - Designate one of the three paths that connect to Granville Island as a shared walking and cycling route. **(56% Yes, 23% No)**

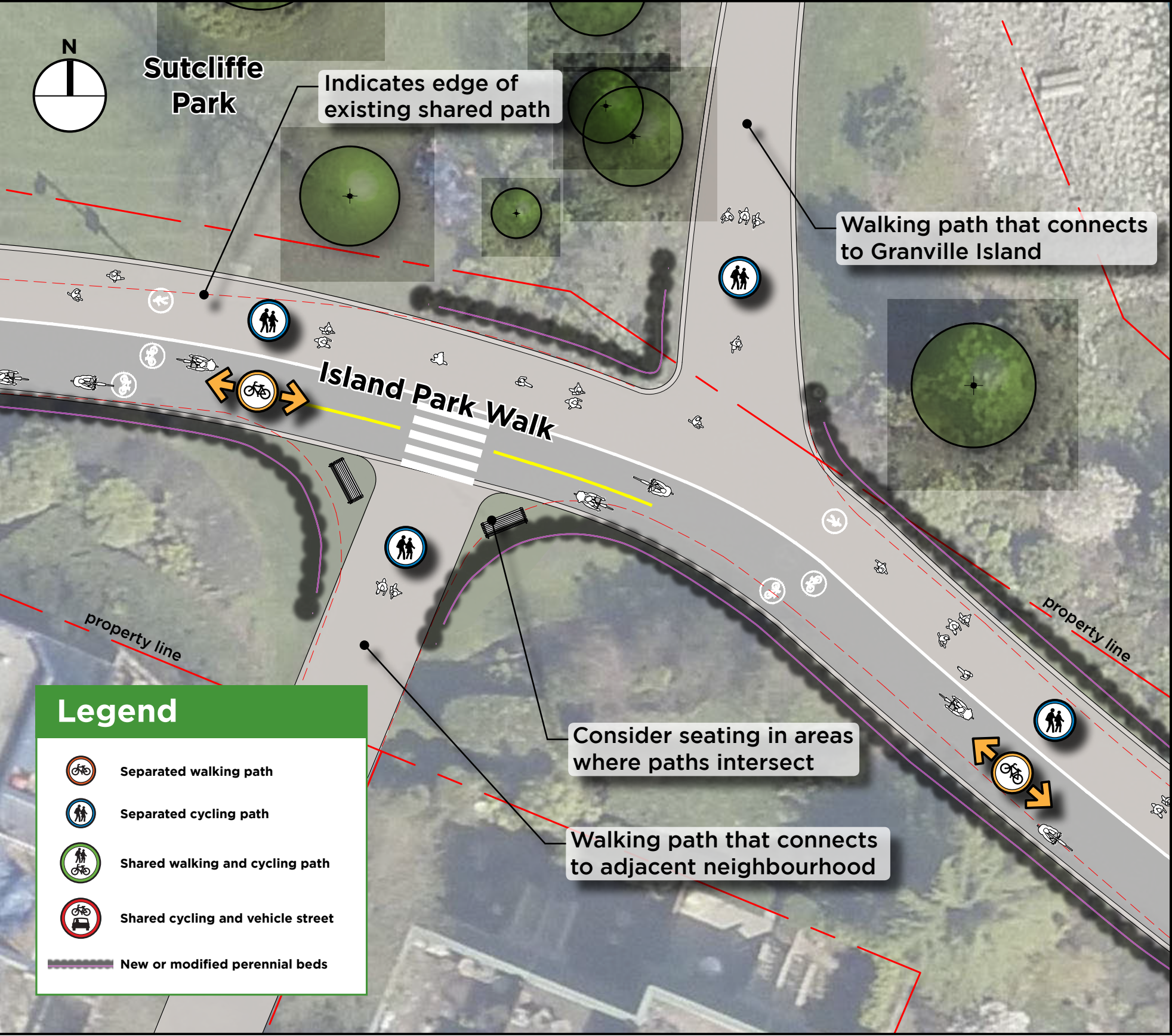
*Remainder of answers were “Unsure/don’t know”. Results are from October 2015 public open houses and online feedback survey.

Our Recommendation

Recommended Solutions	Why?	When?
<p>Widen pathway and provide painted separation and signage to clearly mark walking and cycling paths. See Detail Plan 3A, Board 3.2</p> <p>Key components of design:</p> <ul style="list-style-type: none">• Pathway widened to 6.0m.• Affected perennial plant beds relocated to adjacent locations along the path.• Painted pavement markings and signage to separate and clearly mark walking and cycling paths.	<p>The landscaping and narrow, curved pathway limits visibility in this busy and popular area.</p>	<p>Winter 2016/17</p>
Future Considerations	Why?	
<p>Work with Granville Island (CMHC) to improve access to the island for people walking and cycling, consistent with their upcoming transportation plan. Consider interim and longer-term solutions including improved path connections.</p> <p>Key components of design:</p> <ul style="list-style-type: none">• To be determined in consultation with Granville Island (CMHC).	<p>Existing cycling connections between the Seawall and Granville Island are poor. Of the three existing paths, Old Bridge provides the best option for cycling as it connects to the Seaside Bypass cycling route.</p>	
<p>Improve public spaces at path entrances to Granville Island. Work with Granville Island (CMHC) and adjacent property owners to refine designs.</p>	<p>The potential for conflict is increased at the path entrances to Granville Island as people access and exit the Seawall.</p>	



Detail Plan 3A



Widen pathway and provide painted separation and signage to clearly mark walking and cycling paths.



Existing view, Island Park Walk and Shore Pine Walk looking East

“Better signage to the Seaside Bypass would be very helpful; perhaps also some alternative connections.”

“There should be multiple ways to get onto and off Granville Island by bike.”

“The improvements should be careful not to enable faster biking - especially after changes are made to separate pedestrians from bikes.”

“Safety is the issue. Separation is the only solution.”

“Maintain the beauty of the Seawall by maintaining the open spaces and beautiful plantings.”

“This small section of the Seawall, just before the bridge to the community centre and Alder Bay, is an important place for birds in the spring.”

“Anything you can do to make the Seawall safer for pedestrians would be very much appreciated.”

“Ensure the intimacy of the walking path is maintained wherever possible. Avoid widening the path such that it feels like a boulevard.”